

## Tof MRM for the Quantification of Peptide Biomarkers in Human Glioblastoma with the Xevo™ MRT Mass Spectrometer

---

Matthew E. Daly<sup>a</sup>, Lee A. Gethings<sup>a</sup>, Christopher J. Hughes<sup>a</sup>, Richard Lock<sup>a</sup>, Nelofer Syed<sup>b</sup>

<sup>a</sup>Waters Corporation, Wilmslow, United Kingdom

<sup>b</sup>Imperial College, London, United Kingdom

*Published on October 08, 2025*

---

### Abstract

#### Benefits

- The Time-of-flight multiple reaction monitoring (Tof MRM) mode of acquisition on the Xevo MRT Mass Spectrometer demonstrates that high resolution mass spectrometry (HRMS) can be used for both quantitative and qualitative experiments
- The linear dynamic range and sensitivity of Tof MRM on the Xevo MRT Mass Spectrometer is comparable to MRM on the Xevo TQ Absolute Mass Spectrometer
- Statistical differences can be identified between marker peptides in treated and untreated glioblastoma cell lines using heavy labeled peptides for quantification
- The waters\_connect™ Software Platform provides a complete workflow from data acquisition to data processing and results

---

## Introduction

Glioblastoma is an aggressive form of brain cancer with few therapeutic options available, and correspondingly, the 5-year survival rate remains <10% and the median at 15 months.<sup>1</sup> Of particular interest in disease progression is the activation of specific proteins via phosphorylation by protein kinases. Profiling these pathways through measurement of total activation, phosphorylation of specific residues and kinase abundance is essential when trialing of new therapies.<sup>2</sup> Multi-reflecting time-of-flight (MRT) mass spectrometry (MS) with <1 ppm mass accuracy coupled with the selectivity of multiple reaction monitoring (ToF MRM<sup>3</sup>), allows for accurate and definitive characterization of post-translational modifications while also providing quantitative data surrounding the identified peptide markers. Further, through trapping and release of target ions timed with the pusher pulsing, the ion utilization of ions with specific *m/z* approaches 100%, termed “Enhanced Duty Cycle” (EDC), dramatically improving the sensitivity of the assay. Here, the use of ToF MRM using the Xevo MRT Mass Spectrometer is demonstrated for absolute quantification of phosphorylated peptides associated with glioblastoma.

---

## Experimental

Human glioblastoma cancer cell lines (four in total) represented a control group and those treated with a metabolic therapy (ADI-PEG20).<sup>4</sup> Cell lines were lysed in the presence of protease and phosphatase inhibitors and protein disulphide bonds were reduced with dithiothreitol (DTT) and alkylated with iodoacetamide prior to digestion using trypsin. Phosphopeptides were enriched using the Waters<sup>TM</sup> MassPREP<sup>TM</sup> Phosphopeptide Enrichment Kit (p/n: [186003864 <https://www.waters.com/nextgen/global/shop/standards--reagents/186003864-massprep-phosphopeptide-enrichment-kit.html>](https://www.waters.com/nextgen/global/shop/standards--reagents/186003864-massprep-phosphopeptide-enrichment-kit.html) ).

Additionally, quantitation curves were also generated using a HeLa digest spiked with the heavy labeled peptides (phosphorylated and non-phosphorylated). The heavy labeled peptides were constructed with the C-terminus lysine/arginine being labeled with <sup>13</sup>C <sup>15</sup>N.

Digested samples or standards spiked with synthetic peptides were loaded onto Evotip<sup>TM</sup> Pure tips and separated using the Evosep<sup>TM</sup> One and the 30 SPD chromatographic method (48 minutes cycle time). The

eluate was directed to a NanoLockSpray ion source with a 20µm fused silica emitter. Data were acquired on the Xevo MRT Mass Spectrometer, using the ToF MRM mode of acquisition monitoring three or four transitions per precursor with a dwell time of 70 ms, “Unit” precursor and product ion resolution (~1 Da) and collision energy optimized for each transition (Table 1).

Peptide	Light		Heavy		Collision energy (V)
	Precursor <i>m/z</i>	Fragment <i>m/z</i>	Precursor <i>m/z</i>	Fragment <i>m/z</i>	
AALLK	449.79	643.41	453.8	651.43	30
		530.33		538.34	28
		331.2		339.12	36
AALLK(Phospho)	489.77	625.4	493.78	633.41	30
		512.32		520.33	28
		384.22		392.24	36
AEDE	476.91	614.82	480.24	619.82	18
		550.3		555.3	19
		492.78		497.79	25
AEDE(Phospho)	503.56	654.8	506.9	659.81	18
		605.81		610.82	25
		719.32		724.33	19
AGDLL	475.93	677.87	478.59	681.88	22
		649.36		653.37	22
		535.3		539.31	21
AGDLL(Phospho)	502.58	575.29	505.25	579.29	20
		526.3		530.3	22
		717.85		721.86	22
		689.34		693.34	18
ASAVS	508.77	787.43	513.77	797.44	30
		688.36		698.37	27
		472.29		482.3	35
ASAVS(Phospho)	548.76	768.33	553.75	778.34	21
		670.35		680.36	30
		454.28		464.28	32
		329.18		329.18	18

Table 1. MRM transitions monitored for each light and heavy isotopically labelled in both native and phosphorylated form. Optimised collision energies for each transition is also detailed.

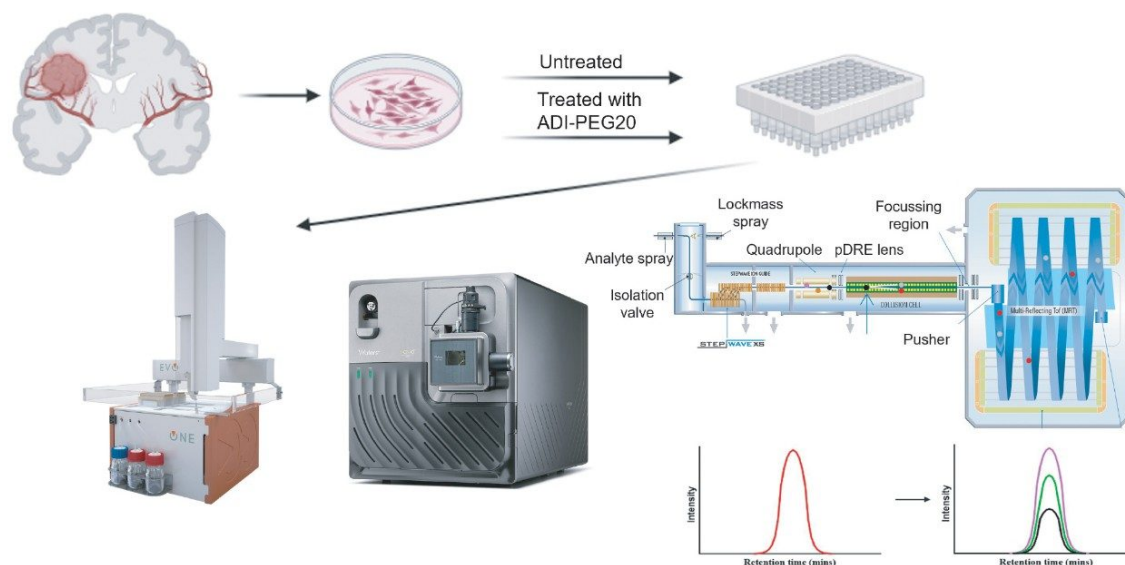
The corresponding Xevo TQ Absolute Mass Spectrometer experiments consisted of using the same Evosep One inlet and chromatographic conditions with the NanoSpray ion source. The Xevo TQ Absolute Mass Spectrometer method consisted of the same precursor and product ion resolution as on the Xevo MRT Mass Spectrometer alongside the same dwell time per transition (70 ms).

In total, 52 transitions were monitored for both MS platforms. All data were subsequently processed using the waters\_connect for Quantitation Application within the waters\_connect Software Platform. Automatic integration of chromatographic peaks was completed by the software and a 1/x weighting applied, generating a linear calibration curve for each peptide. The RMS-1 option was used to generate the signal-to-noise ratio for each peak.

---

## Results and Discussion

Discovery-based LC-MS experiments had been previously conducted to determine the peptide markers of interest, which could then be selected for absolute quantification (Product Solution p/n: [720008385 <https://www.waters.com/nextgen/global/library/library-details.html?documentid=720008385>](https://www.waters.com/nextgen/global/library/library-details.html?documentid=720008385) ). A total of four peptides were chosen and their synthetic equivalents (both native and phosphorylated) were generated as heavy analogues. Fresh glioblastoma cell lines (untreated and treated) were prepared to provide enriched phosphopeptides for LC-MS analysis, containing the heavy labeled synthetic peptides (Figure 1).



*Figure 1. Experimental workflow. Glioblastoma cell lines (untreated and treated), tryptically digested, spiked with heavy labeled peptides and enriched for phosphopeptides. The enriched samples were then prepared for LC-MS analysis and analyzed using the Evosep One combined with Xevo MRT Mass Spectrometer, operating in ToF MRM mode.*

The subsequent data were processed using the MS Quan Application in the waters\_connect Software Platform, highlighting the seamless workflow from method generation, acquisition, and import and processing, all achieved within the waters\_connect Software Platform. Further, through the acquire and process functionality, data sets were automatically imported into the MS Quan Application after acquisition, increasing automative potential for this workflow. An example of the integrated quantifier ion peak throughout the calibration curve for peptide AALLK (Phospho) is shown in Figure 2.

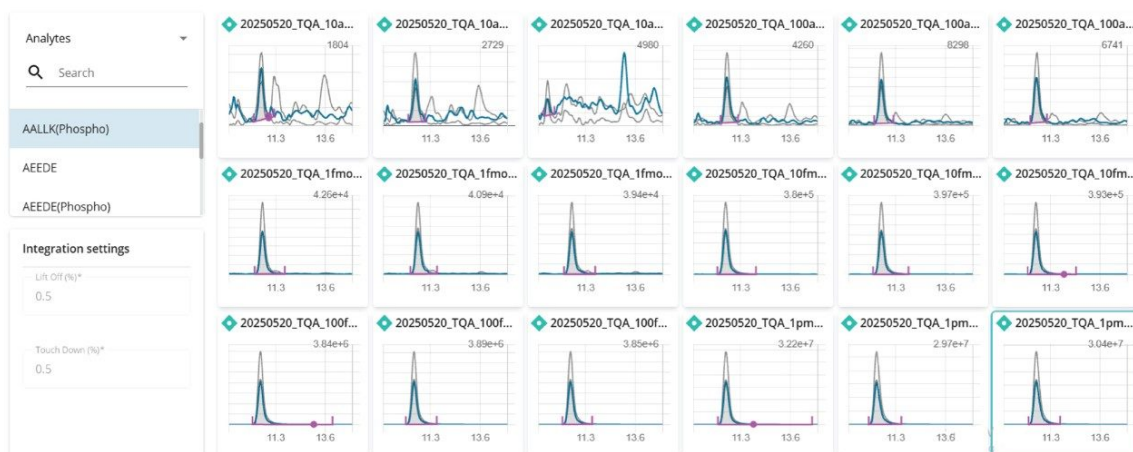


Figure 2. Data processing using the MS Quan Application in waters\_connect Software Platform showing the peak integration for peptide AALLK (Phospho) at each of the calibration points.

Calibration lines based on the HeLa digest spiked with the heavy labeled peptides, resulted in 4-orders of linearity for both MS platforms. Based on the peptide, AALLKASP (non-phosphorylated and phosphorylated), this calibration curve is demonstrated with excellent linearity ( $R^2 > 0.99$ ) for all cases in Figure 3 (left panels generated from data acquired on the Xevo TQ Absolute MS and right panels from the Xevo MRT MS).

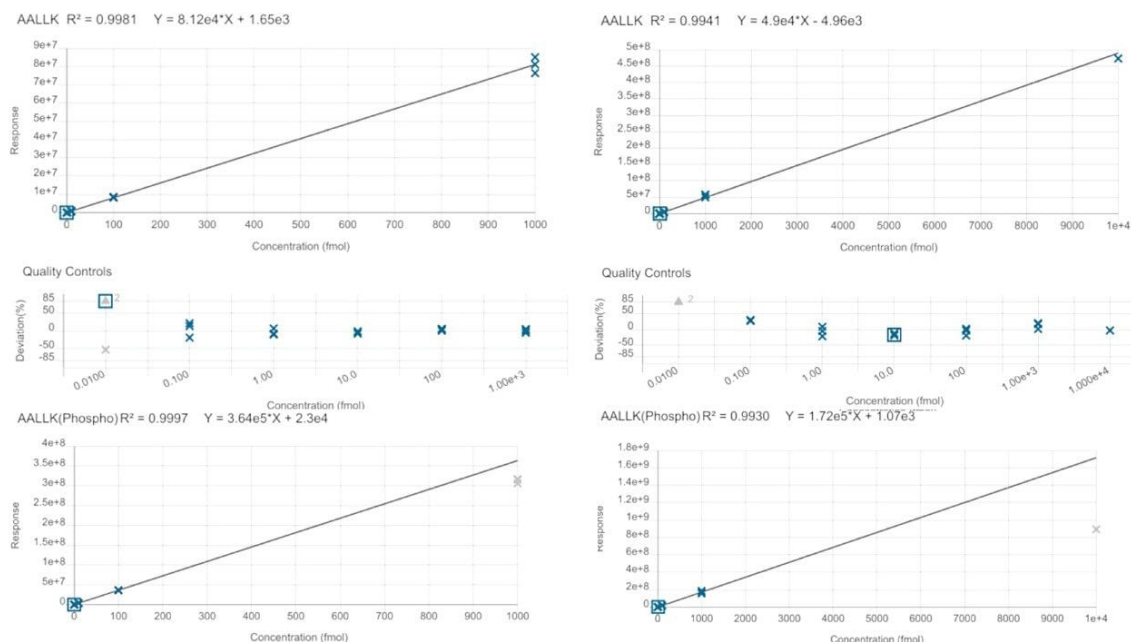
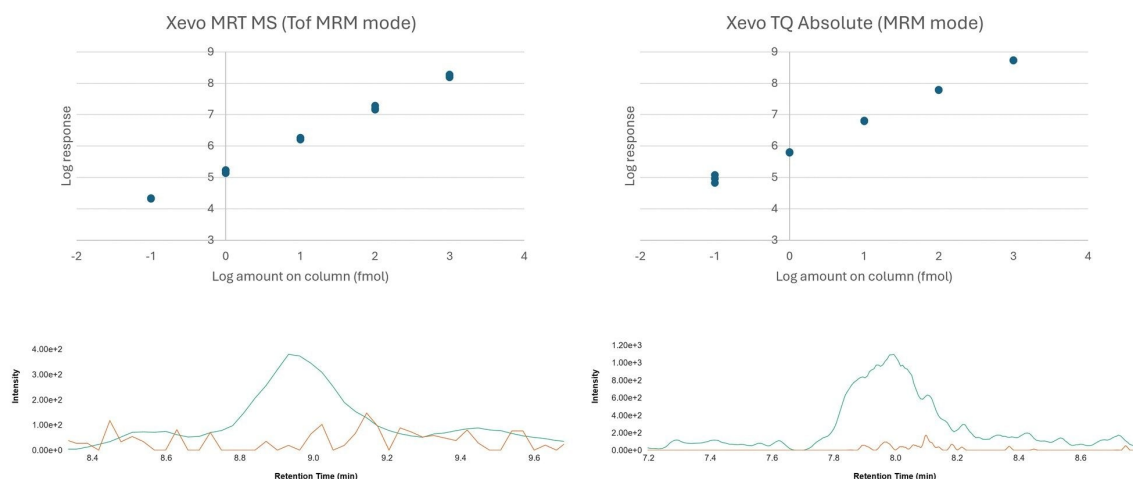


Figure 3. Example calibration lines for the peptide AALLKASP (non-phosphorylated and phosphorylated) with % deviations shown as an example for the non-phosphorylated peptide. All replicate points within the quantitation range were within 20%, and at limit of detection (LOD) were within 30% as widely accepted and reported. Calibration lines are displayed for the Xevo MRT Mass Spectrometer (right panels) and Xevo TQ Absolute Mass Spectrometer (left panels).

High-performing tandem quadrupoles mass spectrometers are renowned for their sensitivity and selectivity, granting them the place at the forefront of high-throughput targeted mass spectrometry, however lack the ability to retrospectively mine data for qualitative insights. Using ToF MRM, low levels of detection and quantitative accuracy have also been demonstrated on the Xevo MRT Mass Spectrometer. Combining this level of sensitivity with high resolution can be particularly advantageous with highly complex matrices where interference effects can become more problematic, such as the HeLa digest used in this study. In this study, "Unit" product resolution was to more appropriately compare the data acquired between the two instruments. Figure 4 provides an overview of the levels of sensitivity which can be achieved, yielding a LOD of 0.1 fmol (Xevo MRT Mass Spectrometer and Xevo TQ Absolute Mass Spectrometer). Comparatively assessing the ratios between both platforms regardless of sample loading highlights the similarity between ToF MRM and MRM experiments. Even at the lowest

loading (10 amol), it was observed that both platforms provide a signal-to-noise ratio in the region of 6:1.



*Figure 4. Sensitivity comparison of Xevo MRT Mass Spectrometer (ToF MRM) and Xevo TQ Absolute Mass Spectrometer (MRM). Measurements based on the quan ion transition with a 70 ms dwell time on both the Xevo MRT Mass Spectrometer and Xevo TQ Absolute Mass Spectrometer. Extracted ion chromatograms are shown of the quan ion transition at 100 amol loading on column for both MS systems.*

Measurements relating to the glioblastoma cell lines indicated that, although identified as potential marker peptides from previous DDA experiments, not all peptides provided a statistically significant difference (based on p-value) between untreated and treated when monitoring the light:heavy ratios ( *i.e.*, AGDLLpS), and were therefore unsuitable to use as markers of treatment with ADI-PEG20. However, absolute quantitation of a subset of peptide markers did show a significant difference between the cell lines, as is the case for AEDEpS (p=0.0276) which corresponds to the calnexin (CANX) protein (Figure 5). CANX is involved in protein folding and quality control within the endoplasmic reticulum and is highly associated with glioblastoma development through the MEK/ERK/BNIOP3 pathway.<sup>5,6</sup>



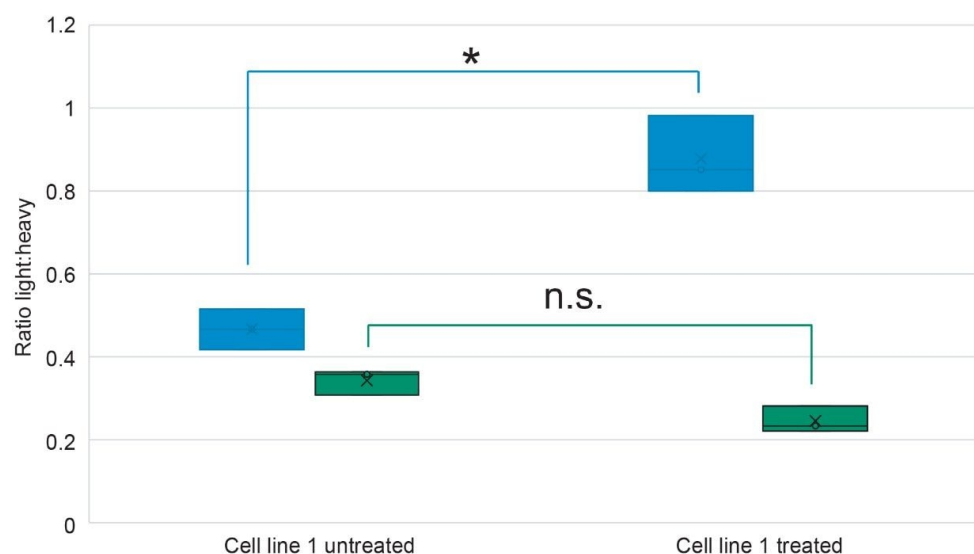


Figure 5. ToF MRM quantification of the phosphopeptides AEEDEpS and AGDLLpS between an untreated and treated cell line.

## Conclusion

The introduction of ToF MRM with EDC on the Xevo MRT Mass Spectrometer has elevated the system to a complete and versatile Quan/Qual solution. In both cases, excellent linearity was achieved for the calibration curves generated (up to 4-orders of linearity) with excellent sensitivity and signal-to-noise ratio, providing LOD and LOQ's of 0.1 and 1.0 fmol respectively. This methodology was then applied to a glioblastoma sample set, comprised of untreated and treated cell lines to highlight differentiating peptides following treatment with a metabolic therapy.

## References

1. Poon, M.T.C., Sudlow, C.L.M., Figueroa, J.D. *et al.* Longer-term ( $\geq 2$  years) survival in patients with glioblastoma in population-based studies pre- and post-2005: a systematic review and meta-analysis.

*Sci Rep* 10, 11622 (2020). <https://doi.org/10.1038/s41598-020-68011-4>.

2. Qin, A., Musket, A., Musich, P. R., Schweitzer, J. B., Xie, Q. Receptor tyrosine kinases as druggable targets in glioblastoma: Do signaling pathways matter?, *Neuro-Oncology Advances*, Volume 3, Issue 1, January-December 2021, vdab133, <https://doi.org/10.1093/noajnl/vdab133> <  
<https://doi.org/10.1093/noajnl/vdab133>> .

3. Tomczyk, N., Wallace, A., Richardson, K., Grzyb, A., Wildgoose, J. Targeted High Resolution Quantification with ToF-MRM and HD-MRM, Application Brief, [720004728](https://doi.org/10.1093/noajnl/vdab133).

4. Hajji, N.; § Garcia-Revilla, J.; Soto, M. S.; Perryman, R.; Symington, J.; Quarles, C. C.; Healey, D. R.; Guo, Y.; Orta-Vazquez, M. L.; Mateos-Cordero, S.; *et al.* Arginine deprivation alters microglial polarity and synergizes with radiation to eradicate non-arginine-auxotrophic glioblastoma tumors. *J Clin Invest* 2022, 132 (6). DOI: 10.1172/JCI142137.

5. Wang *et al.* The dual role of calnexin on malignant progression and tumor microenvironment in glioma, *Scientific Reports*, 2024, 30796.

6. Liu *et al.* Calnexin promotes glioblastoma progression by inducing protective mitopagy through the MEK/ERK/BNIP3 pathway, *Theranostics*, 2025, 15(6), 2624–2648.

---

## Featured Products

Xevo MRT Mass Spectrometer <<https://www.waters.com/nextgen/global/products/mass-spectrometry/mass-spectrometry-systems/xevo-mrt.html>>

Xevo TQ Absolute XR Triple Quadrupole Mass Spectrometer <  
<https://www.waters.com/nextgen/global/products/mass-spectrometry/mass-spectrometry-systems/xevo-tq-absolute.html>>

waters\_connect Informatics Platform <[https://www.waters.com/nextgen/global/products/informatics-and-software/waters\\_connect/waters-connect-informatics-platform.html](https://www.waters.com/nextgen/global/products/informatics-and-software/waters_connect/waters-connect-informatics-platform.html)>

<https://www.evosep.com/evotip/>

Evotip Pure >

<ht

tps://www.evosep.com/evosep-

one/

Evosep One >

720008972, October 2025



© 2025 Waters Corporation. All Rights Reserved.

[使用条款](#) [隐私声明](#) [商标](#) [招聘](#) [法律和隐私声明](#) [危险化学品经营许可证](#) [Cookie](#) [Cookie设置](#)  
[沪ICP备06003546号-2](#) [京公网安备 31011502007476号](#)