

Nota applicativa

## Automating the Sample Preparation Workflow for Per- and Polyfluoroalkyl Substances (PFAS) in Aqueous Samples Following EPA Method 1633

---

Kari Organtini<sup>1</sup>, Ken Rosnack<sup>1</sup>, Oliver Burt<sup>1</sup>, Ian Wan<sup>2</sup>

<sup>1</sup> Waters Corporation, United States

<sup>2</sup> Promochrom Technologies

*Published on June 17, 2025*

---

### Abstract

US EPA Method 1633 is a multi-lab validated method for the analysis of 40 PFAS in a variety of environmental matrices. Sample preparation involves a lengthy SPE procedure and additional sample cleanup. SPE automation is demonstrated as a reliable alternative to manual sample preparation, allowing for sample preparation in approximately half the amount of time, resulting in higher sample throughput and shorter turnaround times. The automated method met all the quality control guidelines for EPA 1633, making it an equivalent option for use with the method. A variety of complex environmental water samples were prepared using automation and analysis was performed using the Waters™ PFAS workflow for LC-MS/MS.

### Benefits

---

- A fully automated comprehensive workflow is presented for PFAS analysis of authentic water samples following the EPA 1633 procedure
- Performance criteria of EPA 1633 for extraction of aqueous samples are easily met using a fully automated SPE extraction system
- Performance of the automated workflow is demonstrated by easily passing qualifications of a Waters ERA certified reference material

An automated sample preparation workflow optimizes laboratory efficiency by reducing sample preparation time by half and thereby minimizing overall time to process samples.

---

## Introduction

US EPA Method 1633 is a multi-lab validated method for the analysis of non-potable water matrices, soils, biosolids, and tissues.<sup>1</sup> The method covers 40 PFAS, and for aqueous samples utilizes a sample preparation incorporating solid phase extraction (SPE) on a weak anion exchange (WAX) cartridge followed by graphitized carbon black (GCB) clean up. Large volume sample sizes are extracted using this protocol, which is a lengthy process that requires trained laboratory personnel to complete. Manual SPE preparation for a 250 mL sample size can take in the range of 3 to 4 hours per batch for a skilled user. With the need for PFAS analysis increasing, a lengthy sample preparation process like this can significantly impact sample throughput and turnaround time. Sample preparation automation can ease the burden of challenging methods on laboratory staff and reduce the processing time for samples.

In previous work, the manual workflow for EPA 1633 was established and thoroughly tested for complex environmental water samples.<sup>2</sup> This work adapts the use of an automated SPE extraction system for these same sample types reducing the 3–4 hour sample preparation time to 2 hours per batch. This automation enhances an already reliable solution of the ACQUITY™ Premier BSM FTN UPLC™ System coupled with a Xevo™ TQ Absolute Mass Spectrometer for PFAS analysis following the EPA Method 1633.

---

## Experimental

---

## Sample Preparation

Samples discussed in this application note include ground water and surface water that were collected locally, and influent and effluent wastewater that were kindly provided by a municipal wastewater treatment facility in the Midwest United States. Influent wastewater samples were sampled only after the primary settling phase, prior to any further treatment. Effluent wastewater samples were fully treated samples ready for discharge. Samples are from the same sources studied in a previous application note that performed EPA 1633 extractions manually.<sup>2</sup> All water samples were collected using grab sampling directly into 250 mL high density polypropylene bottles. Samples were frozen until sample analysis according to EPA 1633 guidelines and holding times. Sample bottles were weighed prior to sample preparation (full) and after sample preparation (empty) to determine the exact volume collected in each bottle. In addition to authentic samples, the Waters ERA PFAS in Wastewater ( [Item No. 404 <https://www.eraqc.com/pfas-in-wastewater-wp-era001663?returnurl=%2fpfas-products%2f>](https://www.eraqc.com/pfas-in-wastewater-wp-era001663?returnurl=%2fpfas-products%2f) ) certified reference material (CRM) was processed with the samples.

The Oasis WAX/GCB bilayer dual-phase SPE cartridge containing both WAX and GCB sorbents, was used for the preparation of all samples. The addition of GCB into the SPE cartridge allows for the full sample extraction and sample clean-up required by EPA 1633 to be automated rather than having to perform the GCB clean-up step using a dispersive technique.

Sample extraction was performed using the Promochrom SPE-03 Gen 4 Automated SPE System. The method used to control the automated SPE system is detailed in Table 1 and was directly adapted from EPA 1633. A sample volume of 250 mL was extracted similar to the sample volume used for manual extractions.<sup>2</sup> High capacity inline filters and anti-clogging tips for the MOD-004 caps were used on the sample inlet lines to filter out particulates before introduction to the SPE system. For the wastewater samples, which contained a substantial amount of suspended solids and particulates, glass wool was also packed to half-height of the SPE cartridge to prevent cartridge clogging.

All samples were spiked with 5 ng/L (sample concentration equivalent) of the required extracted internal standard (EIS) prior to extraction and 5 ng/L (sample concentration equivalent) of the required non-extracted internal standard (NIS) after extraction. The calibration curve range for each analyte is listed in Appendix Table 2. All standards were obtained as mixes from Wellington Laboratories.

Action	Inlet 1	Inlet 2 (ratio)	Flow	Volume
Elute W2	Solvent 5	-	8	15
Elute W1	Solvent 3	-	8	5
Add sample W1	Sample	-	5	275
Rinse	Solvent 2	Air (20%)	45	2.5
Add sample W1	Sample	-	5	5
Rinse	Solvent 2	Air (20%)	45	5
Add sample W1	Sample	-	5	5
Rinse	Solvent 2	Air (20%)	45	5
Add sample W1	Sample	-	5	5
Shake	-	Time based	-	20 s
Rinse	Solvent 4	Air (20%)	45	1.3
Add sample W1	Sample	-	5	3
Rinse	Solvent 4	Air (20%)	45	5
Add sample W2	Sample	-	5	5
Shake	-	Time based	-	20 s
Air Purge W2	Air	-	5	3
Add sample W2	Sample	-	5	5
Blow N2	-	Time based	-	3 min
Rinse	Solvent 5	Air (20%)	45	1.3
Collect 1	Sample	-	1	3
Rinse	Solvent 5	Air (20%)	45	5
Air purge R	Air	-	20	5
Shake	-	Time based	-	15 s
Clean	Sample	-	30	5
Clean	Sample	-	30	5
Collect 1	Sample	-	1	15

Table 1. Promochrom SPE-03 method conditions for EPA 1633 aqueous sample preparation of 250 mL samples. Solvent 2: water, Solvent 3: 0.3 M formic acid, Solvent 4: 1:1 0.1 M formic acid:methanol, Solvent 5: 1% ammonium hydroxide in methanol.

## LC Conditions

LC system:	ACQUITY Premier BSM with FTN
Vials:	700 µL Polypropylene Screw Cap Vials (p/n: 186005219)
Analytical column:	ACQUITY Premier BEH™ C <sub>18</sub> 2.1 x 50 mm, 1.7 µm (p/n: 186009452)
Isolator column:	Atlantis™ Premier BEH C <sub>18</sub> AX 2.1 x 50 mm, 5.0 µm (p/n: 186009407)
Column temperature:	35 °C
Sample temperature:	10 °C
PFAS kit:	PFAS Install Kit (p/n: 176004548)
Injection volume:	2 µL
Flow rate:	0.3 mL/min
Mobile phase A:	2 mM ammonium acetate in water
Mobile phase B:	2 mM ammonium acetate in acetonitrile

Time (min)	%A	%B	Curve
0	95	5	initial
0.5	75	25	6
3	50	50	6
6.5	15	85	6
7	5	95	6
8.5	5	95	6
9	95	5	6
11	95	5	6

## MS Conditions

MS system:	Xevo TQ Absolute
Ionization mode:	ESI-
Capillary voltage:	0.5 kV
Source temperature:	100 °C
Desolvation temperature:	350 °C
Desolvation flow:	900 L/hr
Cone flow:	150 L/hr
MRM method:	See appendix for full MRM method details

## Data Management

Software:	waters_connect™ for Quantitation
-----------	----------------------------------

---

## Results and Discussion

### Blanks

PFAS contamination is often a concern due to their common use in everyday products. During sample preparation procedures like solid phase extraction (SPE), contamination introduced into samples will become concentrated along with the sample. Therefore, it is imperative to have confidence that the equipment, consumables, and reagents used for sample preparation are free from or low in PFAS contamination. Method blanks were extracted on the Promochrom SPE-03 system with each batch of samples to monitor any contribution from the system itself. A method blank chromatogram is highlighted in Figure 1 demonstrating the full automated SPE process did not contribute PFAS contamination to the samples for 39 of the 40 targeted PFAS. There is a large contamination level of PFBA present in the method blank that has previously been determined to be from solvents and reagents rather than the SPE-03 system itself. The method blanks demonstrate that the SPE-03 system is not contributing to PFAS contamination, nor is there carryover between batches when the cleaning method is run.

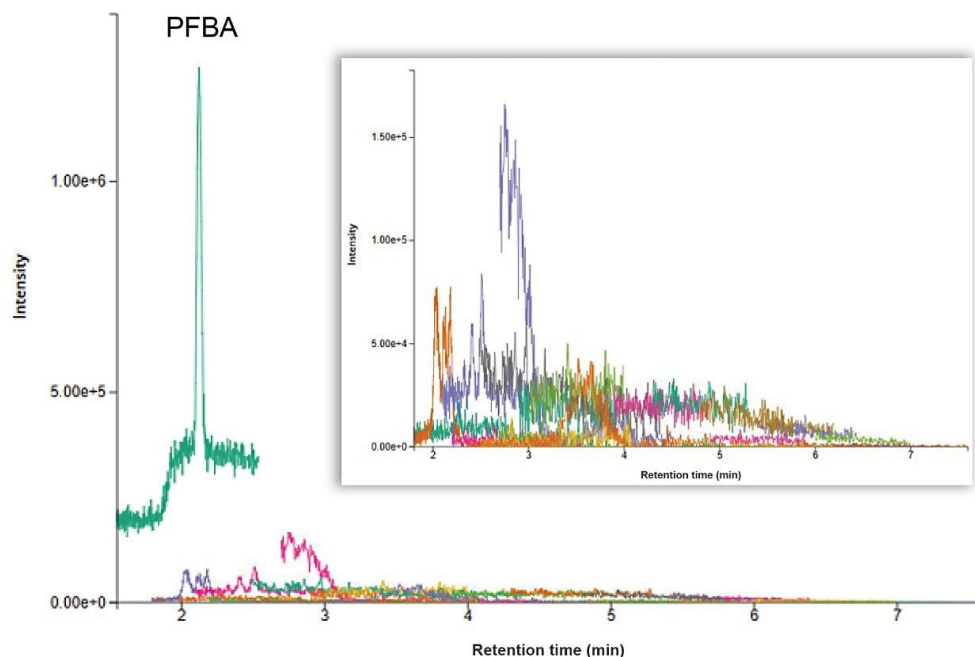


Figure 1. Method blank sample extracted on the Promochrom SPE-03 system. The chromatogram inlay is a zoom of the remaining 39 mass transitions when PFBA is excluded.

## Recovery in Water Samples

One of the important QC criteria to be demonstrated for method performance according to EPA 1633, is recovery of the extracted internal standards (EIS). The percent recovery of the EIS for each type of water sample tested (ground, surface, influent and effluent) is shown in Figure 2, with the minimum recovery limit identified by the black lines.<sup>1</sup> As expected, the more complex wastewater samples did have lower recoveries, but they were all well above the required minimum recovery values. The isotope labeled standards for 6:2 and 8:2 FTS did experience quite a large enhancement effect in the influent wastewater samples. The acceptable maximum recovery for  $^{13}\text{C}_2$ -6:2 FTS and  $^{13}\text{C}_2$ -8:2 FTS are 200% and 300%, respectively. The 6:2 FTS internal standard had a slightly higher recovery than that range and may have been influenced by the high concentration of native 6:2 FTS present in the wastewater samples. Due to the internal standard only containing 2  $^{13}\text{C}$  isotope labels, there is a potential that natural isotope abundance in a highly contaminated sample may be detected as the isotope labeled standard. Overall, the mean recovery of all EIS among 19 environmental water samples extracted was 78.2% with a mean RSD of 8.1%. This demonstrates that the automated SPE extraction system is reproducible

across a range of water sample types and is fit-for-purpose for EPA 1633.

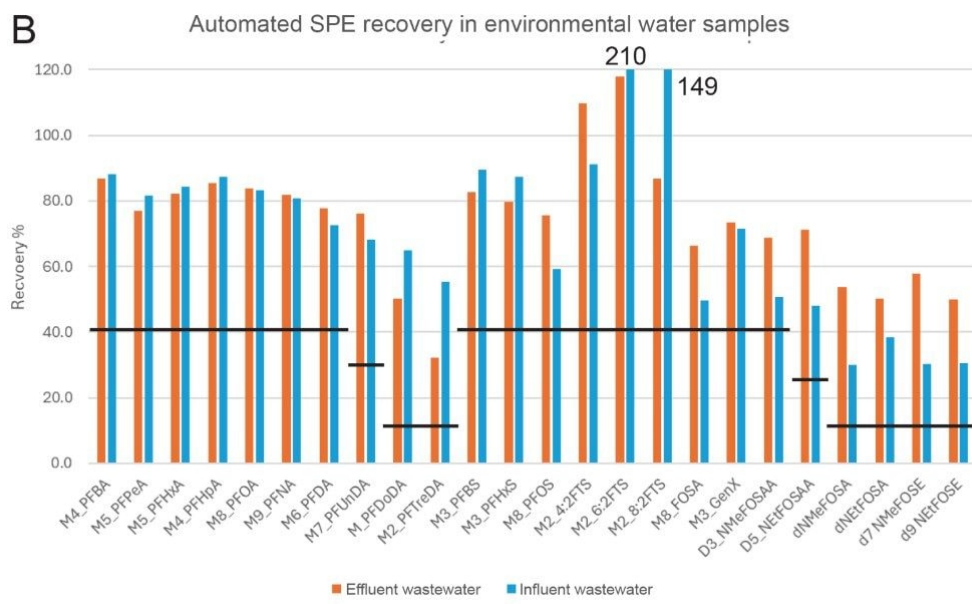
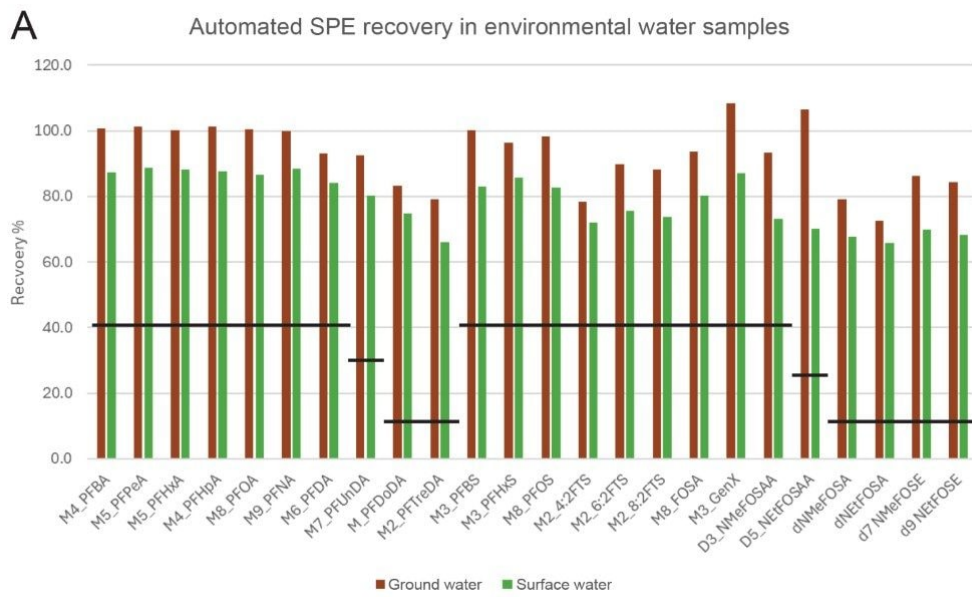


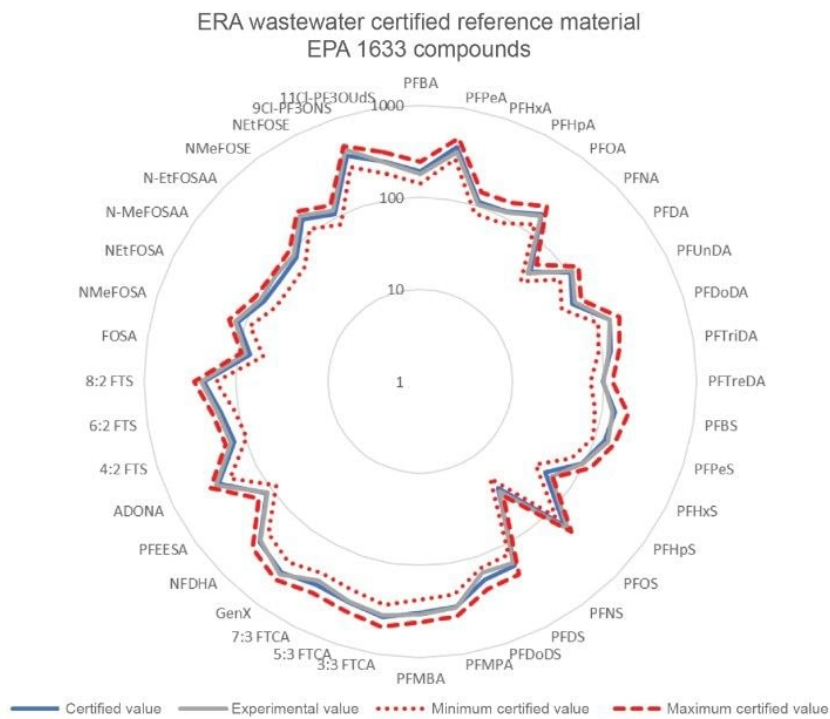
Figure 2. Recovery of extracted internal standards (EIS) in different water matrices extracted using the Promochrom SPE-03 system. A) ground water (red) and surface water (green), B) effluent wastewater (orange) and influent wastewater (blue). The black lines indicate the minimum recovery requirements for each compound in aqueous samples.

## Analysis of a Certified Reference Material

To assess the accuracy of the automated sample preparation technique, a certified reference material (CRM) from Waters ERA was processed along with the authentic samples. The PFAS in the Wastewater CRM is certified for all EPA 1633 analytes, giving a representative reference material for method performance without having to spike unknown matrix samples, which can become complicated without a sample free from PFAS.

Figure 3(a) shows the average quantitative results for 3 replicate extractions and analyses of the Wastewater CRM compared to the certified values and minimum/maximum certified value range. The trueness and RSDs represented as percentages are displayed in Figure 3(b). All 40 target PFAS in EPA 1633 were quantified within the allowable minimum and maximum concentration range with a mean trueness of 103% and trueness range of 81.8–120%. Mean %RSD of replicates was 2.9% with a range of 1.1–7.3%. The manual extraction and analysis of the same reference material resulted in a mean trueness of 92%, with a range of 73–112%.<sup>2</sup> These results demonstrate the automated workflow in combination with the sample analysis is highly accurate and repeatable.

**A**



**B**

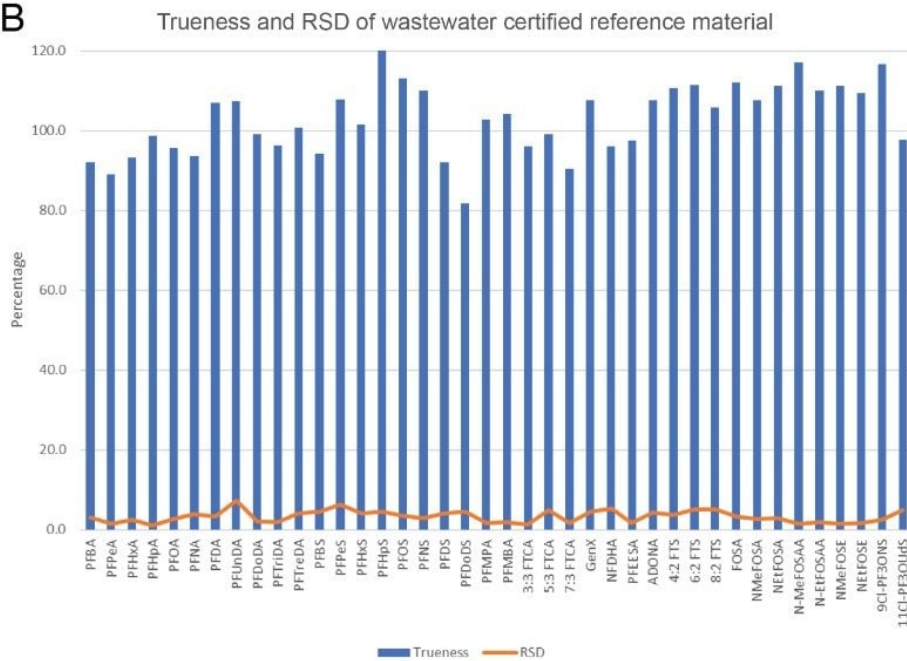


Figure 3. (A) Quantified values of all 40 EPA 1633 target analytes in Waters ERA PFAS

---

*in Wastewater CRM. Red lines represent the minimum (dotted) and maximum (dash) certified value range of the CRM. The blue line represents the certified value. The solid gray line represents the experimental quantitated value. Note: The axis is represented using a log scale. (B) Percent trueness and RSD of the quantitated values of PFAS in the certified reference material.*

## Ongoing QCs and Analysis of Authentic Water Samples

After the initial demonstration that the method performs as required, EPA 1633 requires ongoing quality control measures including an ongoing precision and recovery (OPR) sample. The OPR is a reagent water sample spiked with a known concentrations of the 40 targeted PFAS as well as internal standards and is taken through the full sample preparation procedure. The recovery requirements for the OPR samples vary depending on compound (details can be found in Table 5 and 6 of the EPA 1633 method). The narrowest range of recovery allowed for the native analytes is 70–130% recovery (or  $\pm 30\%$  deviation). An OPR sample was extracted in three batches of samples throughout this work to monitor the consistency of SPE extractions. Figure 4 charts the average percent deviation of the OPR extracts across all the batches compared with the percent deviation of the calibration verification (a non-extracted solvent standard injection with a similar  $\pm 30\%$  deviation requirement). All compounds were well within the strictest limitation of  $\pm 30\%$  deviation for both OPR and CV demonstrating the technique is consistent and accurate over time.

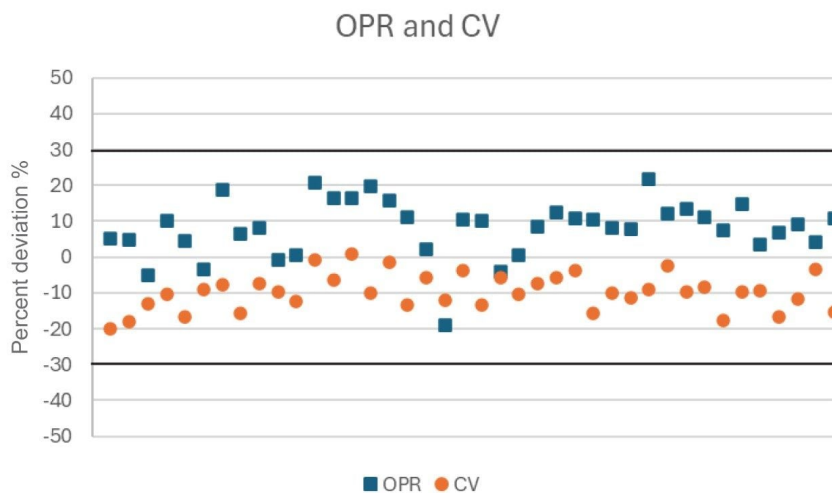


Figure 4. Average percent deviation of Ongoing Precision and Recovery (OPR) extracts and Calibration Verification (CV) injections for all 40 EPA 1633 PFAS over three sample batches. The x axis represents each of the 40 PFAS targeted in EPA 1633. The dark black lines indicate the  $\pm 30\%$  OPR recovery range.

4 different environmental water samples were extracted using the automated SPE system and analyzed using LC-MS/MS to determine the levels of PFAS in authentic sample types. PFAS were detected in all four sample types at significantly different concentration levels with the details of each sample listed in Figure 5. The wastewater samples contained an order of magnitude higher total PFAS levels than the surface and ground water. Comparatively, the total PFAS level in the treated effluent was not significantly reduced from the influent wastewater. The general PFAS concentrations detected using the automated sample preparation workflow were similar to those determined by a manual workflow<sup>2</sup> with slight differences expected due to sampling at different times. This gives confidence that the automation of sample preparation produces the same results as manual preparation.

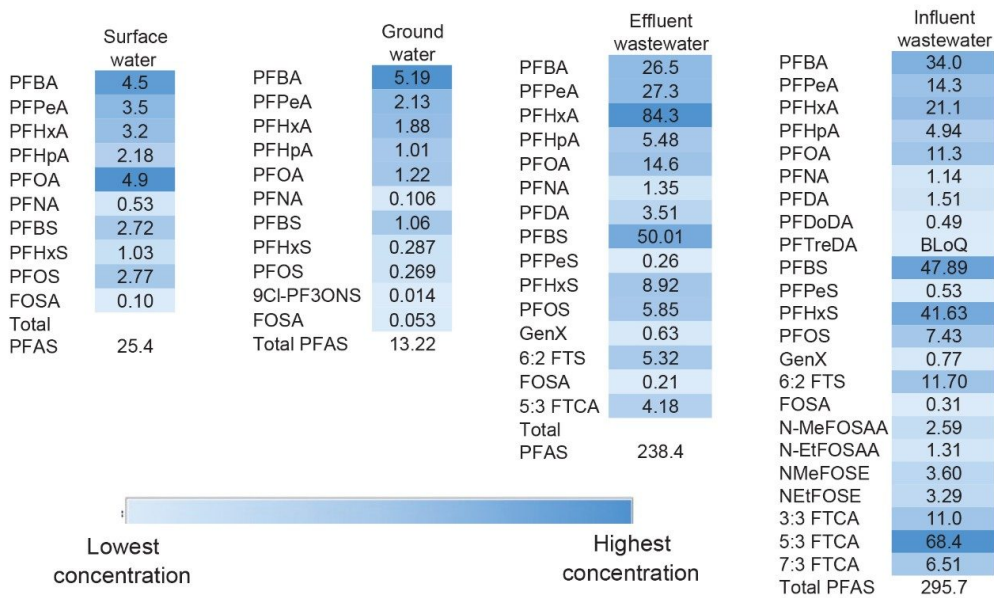


Figure 5. Concentrations of PFAS detected in each water sample reported in ng/L.

## Conclusion

Sample preparation for aqueous samples following the EPA 1633 workflow was successfully automated using the Promochrom SPE-03 system. Full automation of the sample preparation and additional carbon cleanup was made possible due to the use of the Oasis WAX/GCB bilayer dual-phase for PFAS Analysis SPE cartridge. It was shown that the SPE system does not contribute to PFAS contamination of the samples and is therefore suitable for accurate and confident PFAS analysis. Extracted internal standard recoveries in four different water sample types were well above the required minimum recovery values. Additionally, calculated concentrations values for a wastewater reference material were determined to be very accurate when compared to the provided certified range, reinforcing confidence in method accuracy.

4 types of water samples, varying in complexity, were analyzed for the 40 PFAS included in EPA 1633 where PFAS were detected in all samples in a range similar to those detected when the same samples were prepared manually. The data presented demonstrates that the use of an automated SPE extraction system is equivalent to processing the samples manually, allowing laboratories more flexibility in sample handling and potentially

increasing sample capacity for EPA 1633.

---

## References

1. US Environmental Protection Agency. Analysis of Per- and Polyfluoroalkyl Substances (PFAS) in Aqueous, Solid, Biosolids, and Tissue Samples by LC-MS/MS, Draft 4. July 2023.
2. K Organtini, K Rosnack, C Plummer, P Hancock, O Burt. Analysis of Per- and Polyfluoroalkyl Substances (PFAS) in Accordance with EPA 1633 Part 2: Analysis of Aqueous Matrices. Waters Application Note. [720008143](#). December 2023.

Appendix Table 1. MS Method conditions used for PFAS analysis of EPA 1633 compounds in water samples on the Xevo TQ Absolute MS.

Compound	Parent	Fragment	CV	CE	Soft transmission	Internal standard	Type of internal standard
PFBA	213.0	169	10	10	No	<sup>13</sup> C <sub>3</sub> -PFBA	-
PFPeA	262.9	219	10	5	No	<sup>13</sup> C <sub>5</sub> -PFPeA	-
PFHxA	312.9	269	5	10	No	<sup>13</sup> C <sub>6</sub> -PFHxA	-
		119	5	20			
PFHpA	362.9	319	15	10	No	<sup>13</sup> C <sub>7</sub> -PFHpA	-
		169	15	15			
PFOA	412.9	369	10	10	No	<sup>13</sup> C <sub>8</sub> -PFOA	-
		169	10	15			
PFNA	462.9	419	10	10	No	<sup>13</sup> C <sub>9</sub> -PFNA	-
		219	10	15			
PFDA	512.9	468.9	15	9	No	<sup>13</sup> C <sub>10</sub> -PFDA	-
		219	15	15			
PFUnDA	562.9	518.9	25	10	No	<sup>13</sup> C <sub>7</sub> -PFUnDA	-
		269	25	20			
PFDoDA	612.9	568.9	30	10	No	<sup>13</sup> C <sub>11</sub> -PFDoDA	-
		169	30	25			
PFTriDA	662.9	618.9	5	10	No	<sup>13</sup> C <sub>12</sub> -PFTriDA + <sup>13</sup> C <sub>2</sub> -PFTreDA	-
		169	5	30			
PFTreDA	712.9	668.9	10	25	No	<sup>13</sup> C <sub>2</sub> -PFTreDA	-
		169	10	15			
PFBS	298.9	80.1	15	30	No	<sup>13</sup> C <sub>3</sub> -PFBS	-
		99.1	15	30			
PFPeS	348.9	79.9	10	30	No	<sup>13</sup> C <sub>3</sub> -PFHxS	-
		98.9	10	30			
PFHxS	398.9	80.1	10	35	No	<sup>13</sup> C <sub>3</sub> -PFHxS	-
		99.1	10	30			
PFHpS	448.9	80.1	15	35	No	<sup>13</sup> C <sub>8</sub> -PFOS	-
		99.1	15	35			
PFOS	498.9	80.1	15	40	No	<sup>13</sup> C <sub>9</sub> -PFOS	-
		99.1	15	40			
PFNS	548.9	80.1	20	40	No	<sup>13</sup> C <sub>9</sub> -PFOS	-
		99.1	20	40			
PFDS	598.9	80.1	46	46	No	<sup>13</sup> C <sub>9</sub> -PFOS	-
		99.1	46	46			
PFDoDS	699.1	80	40	55	No	<sup>13</sup> C <sub>9</sub> -PFOS	-
		99	40	55			
		169	5	7			
GenX (HFPO-DA)	285.0	119	5	35	Yes	<sup>13</sup> C <sub>3</sub> -HFPO-DA	-
ADONA	376.9	251	10	10	No	<sup>13</sup> C <sub>3</sub> -HFPO-DA	-
		85	10	25			
9Cl-PF3ONS	530.9	350.9	15	25	No	<sup>13</sup> C <sub>9</sub> -PFOS	-
		82.9	15	25			
11Cl-PF3OUdS	630.9	450.9	30	30	No	<sup>13</sup> C <sub>9</sub> -PFOS	-
		82.9	30	30			
4:2 FTS	326.9	306.9	15	15	No	<sup>13</sup> C <sub>2</sub> -4:2 FTS	-
		80.9	15	35			
6:2 FTS	426.9	407	10	20	No	<sup>13</sup> C <sub>2</sub> -6:2 FTS	-
		80.1	12	32			
8:2 FTS	526.9	506.8	15	25	No	<sup>13</sup> C <sub>2</sub> -8:2 FTS	-
		80.9	15	37			
FOSA	497.9	78	40	30	No	<sup>13</sup> C <sub>8</sub> -FOSA	-
N-MeFOSA	511.9	168.9	40	30	No	d <sub>3</sub> NMeFOSA	-
		218.9	40	25			
N-EtFOSA	525.9	168.9	5	25	No	d <sub>5</sub> NEtFOSA	-
		218.9	5	25			
N-MeFOSAA	569.9	418.9	35	25	No	d <sub>3</sub> -N-MeFOSAA	-
		219.1	35	20			
N-EtFOSAA	584.0	418.9	15	20	No	d <sub>5</sub> -N-EtFOSAA	-
		525.9	15	20			
N-MeFOSE	616.0	59	15	15	No	d <sub>7</sub> -NMeFOSE	-
N-EtFOSE	630.0	59	15	15	No	d <sub>9</sub> -NEtFOSE	-
3:3 FTCA	241.0	116.9	5	40	No	<sup>13</sup> C <sub>5</sub> -PFPeA	-
		176.9	5	10			

Compound	Parent	Fragment	CV	CE	Soft transmission	Internal standard	Type of internal standard
5:3 FTCA	340.9	216.9	5	25	No	<sup>13</sup> C <sub>5</sub> -PFHxA	-
		237	5	10			
7:3 FTCA	440.9	316.9	10	22	No	<sup>13</sup> C <sub>5</sub> -PFHxA	-
		337	10	17			
PFMPA	228.9	84.9	23	10	No	<sup>13</sup> C <sub>8</sub> -PFPeA	
PFMBA	278.9	84.9	10	10	No	<sup>13</sup> C <sub>6</sub> -PFHxA	
PFEESA	314.9	82.9	15	20	No	<sup>13</sup> C <sub>5</sub> -PFHxA	-
		134.9	15	20			
NFDHA	295.0	84.9	5	10	No	<sup>13</sup> C <sub>5</sub> -PFHxA	-
		200.9	5	10			
<sup>13</sup> C <sub>4</sub> -PFBA	216.8	171.9	10	10	No	<sup>13</sup> C <sub>3</sub> -PFBA	Extracted IS
<sup>13</sup> C <sub>4</sub> -PFPeA	267.9	223	10	5	No	<sup>13</sup> C <sub>2</sub> -PFHxA	Extracted IS
<sup>13</sup> C <sub>6</sub> -PFHxA	317.9	272.9	10	5	No	<sup>13</sup> C <sub>2</sub> -PFHxA	Extracted IS
		119.9	10	20			
<sup>13</sup> C <sub>4</sub> -PFHpA	366.9	321.9	15	10	No	<sup>13</sup> C <sub>2</sub> -PFHxA	Extracted IS
		169	15	15			
<sup>13</sup> C <sub>8</sub> -PFOA	420.9	375.9	5	15	No	<sup>13</sup> C <sub>4</sub> -PFOA	Extracted IS
		172	5	10			
<sup>13</sup> C <sub>9</sub> -PFNA	471.9	426.9	10	10	No	<sup>13</sup> C <sub>6</sub> -PFNA	Extracted IS
		223	10	15			
<sup>13</sup> C <sub>6</sub> -PFDA	519	473.9	5	10	No	<sup>13</sup> C <sub>2</sub> -PFDA	Extracted IS
		219	5	15			
<sup>13</sup> C <sub>7</sub> -PFUnDA	569.9	524.9	5	10	No	<sup>13</sup> C <sub>2</sub> -PFDA	Extracted IS
		274	5	15			
<sup>13</sup> C-C-PFDoDA	614.9	569.9	10	10	No	<sup>13</sup> C <sub>2</sub> -PFDA	Extracted IS
		169	10	25			
<sup>13</sup> C <sub>2</sub> -PFTreDA	714.9	169	25	35	No	<sup>13</sup> C <sub>2</sub> -PFDA	Extracted IS
		669.9	25	10			
<sup>13</sup> C <sub>3</sub> -PFBS	301.9	80.1	10	30	No	<sup>16</sup> O <sub>2</sub> -PFHxS	Extracted IS
		99.1	10	25			
<sup>13</sup> C <sub>3</sub> -PFHxS	401.9	80.1	10	40	No	<sup>16</sup> O <sub>2</sub> -PFHxS	Extracted IS
		99.1	10	35			
<sup>13</sup> C <sub>6</sub> -PFOS	506.9	80.1	15	40	No	<sup>13</sup> C <sub>4</sub> -PFOS	Extracted IS
		99.1	15	40			
<sup>13</sup> C <sub>3</sub> -GenX	287	169	5	12	Yes	<sup>13</sup> C <sub>2</sub> -PFHxA	Extracted IS
		119	5	12			
<sup>13</sup> C <sub>2</sub> -4:2 FTS	328.9	308.9	40	15	No	<sup>16</sup> O <sub>2</sub> -PFHxS	Extracted IS
		81	40	25			
<sup>13</sup> C <sub>2</sub> -6:2 FTS	428.9	409	10	20	No	<sup>16</sup> O <sub>2</sub> -PFHxS	Extracted IS
		80.9	10	27			
<sup>13</sup> C <sub>2</sub> -8:2 FTS	528.9	508.9	10	20	No	<sup>16</sup> O <sub>2</sub> -PFHxS	Extracted IS
		81	10	35			
<sup>13</sup> C <sub>6</sub> -FOSA	505.9	78.1	35	25	No	<sup>13</sup> C <sub>4</sub> -PFOS	Extracted IS
d <sub>3</sub> NMeFOSA	514.9	168.9	40	30	No	<sup>13</sup> C <sub>4</sub> -PFOS	Extracted IS
d <sub>4</sub> NEtFOSA	531	168.9	5	25	No	<sup>13</sup> C <sub>4</sub> -PFOS	Extracted IS
D <sub>5</sub> -N-EtFOSAA	589	418.9	30	20	No	<sup>13</sup> C <sub>4</sub> -PFOS	Extracted IS
		506.9	30	15			
D <sub>3</sub> -N-MeFOSAA	572.9	418.9	35	20	No	<sup>13</sup> C <sub>4</sub> -PFOS	Extracted IS
		482.7	35	15			
d <sub>7</sub> -NMeFOSE	623	58.9	15	15	No	<sup>13</sup> C <sub>4</sub> -PFOS	Extracted IS
d <sub>4</sub> -NEtFOSE	639	58.9	15	15	No	<sup>13</sup> C <sub>4</sub> -PFOS	Extracted IS
<sup>13</sup> C <sub>3</sub> -PFBA	216	172	10	10	No	-	Non-extracted IS
<sup>13</sup> C <sub>2</sub> -PFHxA	314.9	119.9	10	20	No	-	Non-extracted IS
		270	10	5			
<sup>13</sup> C <sub>4</sub> -PFOA	417	172	10	20	No	-	Non-extracted IS
<sup>13</sup> C <sub>5</sub> -PFNA	468	423	10	10	No	-	Non-extracted IS
<sup>13</sup> C <sub>2</sub> -PFDA	515	470	20	10	No	-	Non-extracted IS
<sup>16</sup> O <sub>2</sub> -PFHxS	403	83.9	10	40	No	-	Non-extracted IS
<sup>13</sup> C <sub>4</sub> -PFOS	503	80.2	15	40	No	-	Non-extracted IS
		99.1	15	40			

Appendix Table 1. MS Method conditions used for PFAS analysis of EPA

1633 compounds in water samples on the Xevo TQ Absolute MS.

Compound	Cal 1 (ng/mL)	Cal 2 (ng/mL)	Cal 3 (ng/mL)	Cal 4 (ng/mL)	Cal 5 (ng/mL)	Cal 6 (ng/mL)	Cal 7 (ng/mL)	Cal 8 (ng/mL)
PFBA	0.02	0.04	0.20	0.40	1.00	2.00	4.0	10.0
PFPeA	0.01	0.02	0.10	0.20	0.50	1.00	2.0	5.0
PFHxA	0.005	0.01	0.05	0.10	0.25	0.50	1.0	2.5
PFHpA	0.005	0.01	0.05	0.10	0.25	0.50	1.0	2.5
PFOA	0.005	0.01	0.05	0.10	0.25	0.50	1.0	2.5
PFNA	0.005	0.01	0.05	0.10	0.25	0.50	1.0	2.5
PFDA	0.005	0.01	0.05	0.10	0.25	0.50	1.0	2.5
PFUnDA	0.005	0.01	0.05	0.10	0.25	0.50	1.0	2.5
PFDoDA	0.005	0.01	0.05	0.10	0.25	0.50	1.0	2.5
PFTriDA	0.005	0.01	0.05	0.10	0.25	0.50	1.0	2.5
PFTreDA	0.005	0.01	0.05	0.10	0.25	0.50	1.0	2.5
PFBS	0.005	0.01	0.05	0.10	0.25	0.50	1.0	2.5
PFPeS	0.005	0.01	0.05	0.10	0.25	0.50	1.0	2.5
PFHxS	0.005	0.01	0.05	0.10	0.25	0.50	1.0	2.5
PFHpS	0.005	0.01	0.05	0.10	0.25	0.50	1.0	2.5
PFOS	0.005	0.01	0.05	0.10	0.25	0.50	1.0	2.5
PFNS	0.005	0.01	0.05	0.10	0.25	0.50	1.0	2.5
PFDS	0.005	0.01	0.05	0.10	0.25	0.50	1.0	2.5
PFDoDS	0.005	0.01	0.05	0.10	0.25	0.50	1.0	2.5
GenX	0.01	0.02	0.10	0.20	0.50	1.00	2.0	5.0
ADONA	0.01	0.02	0.10	0.20	0.50	1.00	2.0	5.0
9ClPF3ONS	0.01	0.02	0.10	0.20	0.50	1.00	2.0	5.0
11ClPF3OUdS	0.01	0.02	0.10	0.20	0.50	1.00	2.0	5.0
4_2 FTS	0.02	0.04	0.20	0.40	1.00	2.00	4.0	10.0
6_2 FTS	0.02	0.04	0.20	0.40	1.00	2.00	4.0	10.0
8_2 FTS	0.02	0.04	0.20	0.40	1.00	2.00	4.0	10.0
FOSA	0.005	0.01	0.05	0.10	0.25	0.50	1.0	2.5
NMeFOSA	0.005	0.01	0.05	0.10	0.25	0.50	1.0	2.5
NEtFOSA	0.005	0.01	0.05	0.10	0.25	0.50	1.0	2.5
NMeFOSAA	0.005	0.01	0.05	0.10	0.25	0.50	1.0	2.5
NEtFOSAA	0.005	0.01	0.05	0.10	0.25	0.50	1.0	2.5
NMeFOSE	0.05	0.10	0.50	1.00	2.50	5.00	10.0	25.0
NEtFOSE	0.05	0.10	0.50	1.00	2.50	5.00	10.0	25.0
3:3 FTCA	0.02	0.04	0.20	0.40	1.00	2.00	4.0	10.0
5:3 FTCA	0.10	0.20	1.00	2.00	5.00	10.0	20.0	50.0
7:3 FTCA	0.10	0.20	1.00	2.00	5.00	10.0	20.0	50.0

Compound	Cal 1 (ng/mL)	Cal 2 (ng/mL)	Cal 3 (ng/mL)	Cal 4 (ng/mL)	Cal 5 (ng/mL)	Cal 6 (ng/mL)	Cal 7 (ng/mL)	Cal 8 (ng/mL)
PFMPA	0.01	0.02	0.10	0.20	0.50	1.00	2.0	5.0
PFMBA	0.01	0.02	0.10	0.20	0.50	1.00	2.0	5.0
PFEESA	0.01	0.02	0.10	0.20	0.50	1.00	2.0	5.0
NFDHA	0.01	0.02	0.10	0.20	0.50	1.00	2.0	5.0
M4 PFBA	2.0	2.0	2.0	2.0	2.0	2.0	2.0	2.0
M5_PFPeA	1.0	1.0	1.0	1.0	1.0	1.0	1.0	1.0
M5_PFHxA	0.50	0.50	0.50	0.50	0.50	0.50	0.50	0.50
M4_PFHpA	0.50	0.50	0.50	0.50	0.50	0.50	0.50	0.50
M8_PFOA	0.50	0.50	0.50	0.50	0.50	0.50	0.50	0.50
M9_PFNA	0.25	0.25	0.25	0.25	0.25	0.25	0.25	0.25
M6_PFDA	0.25	0.25	0.25	0.25	0.25	0.25	0.25	0.25
M7_PFUnDA	0.25	0.25	0.25	0.25	0.25	0.25	0.25	0.25
M_PFDODA	0.25	0.25	0.25	0.25	0.25	0.25	0.25	0.25
M2_PFTreDA	0.25	0.25	0.25	0.25	0.25	0.25	0.25	0.25
M3_PFBS	0.50	0.50	0.50	0.50	0.50	0.50	0.50	0.50
M3_PFHxS	0.50	0.50	0.50	0.50	0.50	0.50	0.50	0.50
M8_PFOS	0.50	0.50	0.50	0.50	0.50	0.50	0.50	0.50
M2_42FTS	1.0	1.0	1.0	1.0	1.0	1.0	1.0	1.0
M2_62FTS	1.0	1.0	1.0	1.0	1.0	1.0	1.0	1.0
M2_82FTS	1.0	1.0	1.0	1.0	1.0	1.0	1.0	1.0
M8_FOSA	1.0	1.0	1.0	1.0	1.0	1.0	1.0	1.0
M3_GenX	2.0	2.0	2.0	2.0	2.0	2.0	2.0	2.0
D3_NMeFOSAA	1.0	1.0	1.0	1.0	1.0	1.0	1.0	1.0
D5_NEtFOSAA	1.0	1.0	1.0	1.0	1.0	1.0	1.0	1.0
dNMeFOSA	0.50	0.50	0.50	0.50	0.50	0.50	0.50	0.50
dNEtFOSA	0.50	0.50	0.50	0.50	0.50	0.50	0.50	0.50
d7 NMeFOSE	5.0	5.0	5.0	5.0	5.0	5.0	5.0	5.0
d9 NEtFOSE	5.0	5.0	5.0	5.0	5.0	5.0	5.0	5.0
M3 PFBA_NIS	1.0	1.0	1.0	1.0	1.0	1.0	1.0	1.0
M2 PFHxA_NIS	0.50	0.50	0.50	0.50	0.50	0.50	0.50	0.50
M4 PFOA_NIS	0.50	0.50	0.50	0.50	0.50	0.50	0.50	0.50
M5 PFNA_NIS	0.25	0.25	0.25	0.25	0.25	0.25	0.25	0.25
M2 PFDA_NIS	0.25	0.25	0.25	0.25	0.25	0.25	0.25	0.25
18O2 PFHxS_NIS	0.50	0.50	0.50	0.50	0.50	0.50	0.50	0.50
M4 PFOS_NIS	0.50	0.50	0.50	0.50	0.50	0.50	0.50	0.50

Appendix Table 2. Calibration curve range used for PFAS analysis of EPA 1633 compounds in water samples on the Xevo TQ Absolute MS.

## Featured Products

[ACQUITY Premier System <](#)

<https://www.waters.com/nextgen/global/products/chromatography/chromatography-systems/acquity-premier-system.html>>

[Xevo TQ Absolute XR Triple Quadrupole Mass Spectrometer <](#)

<https://www.waters.com/nextgen/global/products/mass-spectrometry/mass-spectrometry-systems/xevo-tq-absolute.html>>

720008825, June 2025



© 2025 Waters Corporation. All Rights Reserved.

[Condizioni d'uso](#) [Informativa sulla Privacy](#) [Marchi di fabbrica](#) [Opportunità professionali](#)

[Informativa legale e relativa alla privacy](#) [Cookie](#) [Preferenze cookie](#)