

Nota applicativa

Accelerating Method Development and Manufacturing of GLP-1 Analogs with LC-UV/MS

Duanduan Han, Samantha Ippoliti, Robert E. Birdsall, Karen Nyholm

Waters Corporation United States

Published on May 14, 2025

Contact Sales

Abstract

Glucagon-like-peptide-1 (GLP-1) receptor agonists have recently gained significant attention as a metabolic regulator for treating type 2 diabetes and obesity resulting in unprecedented demand. In response, manufacturers are actively reassessing their production processes to enhance efficiency and meet growing market needs. Solutions that can utilize information more efficiently to expedite decisions in a timely manner are required to ensure that manufacturers can meet regulatory standards and drug product safety while improving productivity.

In this study, we present a QC-friendly LC-UV/MS workflow designed to alleviate the workload on analytical laboratories. Access to orthogonal mass data allows supporting labs to make quicker and more informed

decisions during method development, reducing errors, and increasing overall productivity.

This solution integrates the ACQUITY™ QDa™ II Mass Detector with Empower™ Chromatography Data System (CDS) as a compliance-ready, scalable software solution for instrument control, data acquisition, review, and reporting with full audit trail capabilities coupled with the Arc™ Premier System. The capabilities of this unique LC-UV/MS platform were demonstrated through a real-world use case involving the rapid detection and putative identification of a process-related impurity in a GLP-1 analog.

Benefits

- Orthogonal mass information enables detection of impurities that may be overlooked using traditional UV-based detection, increasing confidence in results.
- ACQUITY QDa II Mass Detector enhances analytical labs' capabilities to more effectively investigate and resolve out-of-specification results.
- The integrated LC-UV/MS workflow helps manufacturers meet regulatory requirements while ensuring both product safety and operational productivity.

Introduction

Glucagon-like-peptide-1 receptor agonists (GLP-1 RAs) are widely used to treat type 2 diabetes and obesity.¹ The success of the latter has resulted in an increase in product demand, which significantly strains both supply chains and manufacturers. As a result, customers are increasingly turning to compounded drugs, which are not regulated by the FDA and pose an elevated risk to consumer safety. Drug manufacturers need reliable and robust methods to perform raw material screening, in-process control, lot release, and stability monitoring to ensure drug safety and efficacy. Solutions that can utilize information more efficiently to detect anomalies and support risk-based decisions are needed to ensure that manufacturers can meet regulatory standards and drug product safety while improving productivity.

The ACQUITY QDa II Mass Detector (Figure 1) is a cost-effective compact mass detector featuring ease-of-use on/off operation and is fully integrated with the Empower CDS, offering a compliant-ready solution while enabling the acquisition of orthogonal data for increased productivity. Access to orthogonal mass data such as this allows supporting labs to make quicker and more informed decisions during method development and

manufacturing of GLP-1 analogs, reducing errors and increasing overall productivity. In this study, we demonstrate the performance of the ACQUITY QDa II Mass Detector in the detection of process-related impurities and its ability to support more informative lab investigations for out-of-specification (OOS) results.



Figure 1. The ACQUITY QDa II Mass Detector.

Experimental

Research-grade GLP-1 analog exenatide was purchased from multiple vendors. Exenatide stock was prepared at 0.25 mg/mL using acetate buffer at pH 4.5. The stock concentration and buffer were chosen to match the formulation of corresponding drug products with minor adjustment. Exenatide was digested with RapiZyme™ Trypsin at 37 °C for 30 minutes (peptide: enzyme weight ratio 20:1). Trypsin was inactivated by adding 0.1% formic acid/water after the digestion. Thermal degradation occurred at 50 °C. Samples were analyzed at 0.1 mg/mL with the ACQUITY QDa II Mass Detector and 0.004 mg/mL with the Xevo™ G3 QTof Mass Spectrometer.

ACQUITY QDa II Mass Detector Analysis

LC system: Arc Premier System (QSM)

Detection: PDA, $\lambda = 210\text{--}400\text{ nm}$
ACQUITY QDa II Mass Detector

Column: XSelect™ Premier Peptide CSH™ C18 Column, 130 Å,
2.5 μm , 4.6 x 100 mm (p/n: 186009908 <<https://www.waters.com/nextgen/global/shop/columns/186009908-xselect-premier-peptide-csh-c18-column-130a-25--m--46-x-100-mm-1.html>>) (+eConnect™
186009908RF <<https://www.waters.com/nextgen/global/shop/columns/186009908rf-xselect-premier-peptide-csh-c18-column-130-a-25--m--46-x-100-mm-.html>>)

Column temperature: 60 °C

Sample temperature: 10 °C

Injection volume: 10 μL

Flow rate: 0.96 mL/min

Mobile phase: A: 0.1% formic acid in water
B: 0.1% formic acid in acetonitrile

Chromatography software: Empower 3.8.1

ACQUITY QDa II Mass Detector Settings

Ionization mode: ESI+

Acquisition mode: Full scan

Acquisition range: 250–1500 m/z

Scan rate: 5 Hz

Capillary voltage: 1.5 kV

Cone voltage: 15 V

Probe temperature: 600 °C

Gradient Table

Time (min)	Flow (mL/min)	%A	%B	%C	%D	Curve
initial	0.96	99.0	1.0	0	0	initial
2.00	0.96	99.0	1.0	0	0	6
22.00	0.96	45.0	55.0	0	0	6
25.00	0.96	5.0	95.0	0	0	6
26.00	0.96	5.0	95.0	0	0	6
28.00	0.96	99.0	1.0	0	0	6
40.00	0.96	99.0	1.0	0	0	6

High Resolution Mass Spectrometry (HRMS) Analysis

LC system: ACQUITY Premier System (BSM)

Detection: TUV, $\lambda = 214$ nm
Xevo G3 QTof Mass Spectrometer

Column: ACQUITY UPLC™ Premier CSH C18 130 Å, 2.1 x 100 mm, 1.7 μ m (p/n: 186009488 <<https://www.waters.com/nextgen/global/shop/columns/186009488-acquity-premier-peptide-csh-c18-column-130a-17--m-21-x-100-mm-1-.html>>)

Column temperature: 60 °C

Sample temperature: 10 °C

Injection volume: 10 μ L

Flow rate: 0.20 mL/min

Mobile phase: A: 0.1% formic acid in water
B: 0.1% formic acid in acetonitrile

Chromatography software: UNIFI™ Scientific Information System

Xevo G3 QTof Mass Spectrometer Settings

ESI spray voltage: 1.0 kV

Sample cone: 20 V

Source offset: 30 V

Source temperature: 120 °C

Desolvation temperature: 450 °C

Cone gas: 50 L/h

Desolvation gas: 800 L/h

Collision cell RF: 400 V

ESI mode: Positive, sensitivity mode

Scan range: 50–2000 m/z

Collision energies: Low: 6 V
High: 20–50 V

Gradient Table

Time (min)	Flow (mL/min)	%A	%B	Curve
initial	0.20	99.0	1.0	initial
1.00	0.20	99.0	1.0	6
61.00	0.20	50.0	50.0	6
62.00	0.20	50.0	50.0	6
64.00	0.20	15.0	85.0	6
66.00	0.20	15.0	85.0	6
66.50	0.20	99.0	1.0	6
75.00	0.20	99.0	1.0	6

Results and Discussion

Orthogonal Mass Detection

Hyphenated workflows such as LC-UV/MS offer a unique platform to help expedite the development and manufacturing process. As shown in Figure 2, the ACQUITY QDa II Mass Detector offers the simplicity of on/off operation with instrument control and settings accessed through the instrument method within the Empower CDS. This type of compact mass detector is advantageous to GLP-1 analogs and peptide-based analyses alike as mass information can quickly be ascertained to verify sample integrity and identity (Figure 2B). Hyphenated platforms such as LC-UV/MS not only increase the transferability of methods between labs but can also expedite work as access to orthogonal mass information allows support labs to make informed decisions quicker, reduce errors, and increase overall productivity.

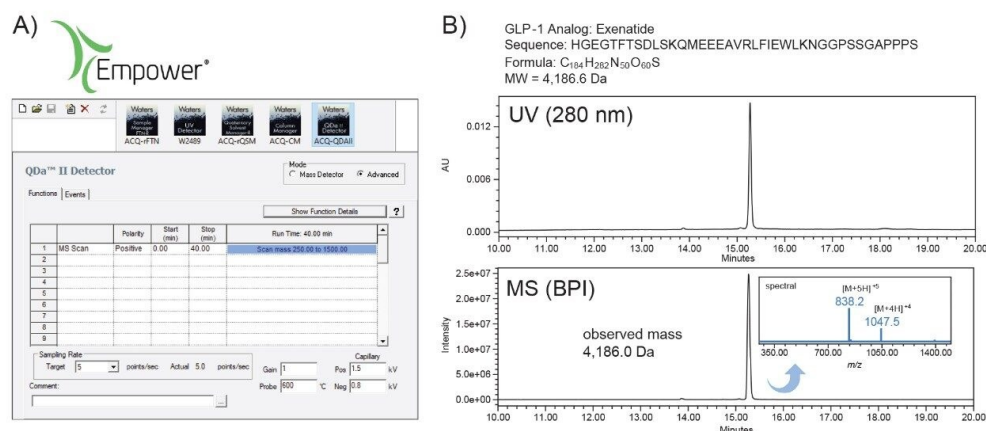


Figure 2. The ACQUITY QDa II Mass Detector instrument control and settings are (A) accessed via the Empower CDS and (B) provide verification of sample integrity and identity

Orthogonal Screening for Impurity Detection

Using GLP-1 analogs as a case study, exenatide samples purchased from two different vendors were tested for comparability using this LC-UV/MS workflow. As shown in Figure 3A, UV detection indicated high purity for both samples. Similarly, MS-response for the base peak intensity (BPI) chromatogram from the ACQUITY QDa II Mass Detector also indicated high purity (Figure 3B). Interestingly, the spectral intensity for vendor 2 was observed to be half as intense (peak height 1.2e7) compared to vendor 1 despite being prepared at the same concentration. This observation prompted a closer inspection. Spectral data, as shown in Figure 3C, indicates an impurity present in vendor 2 with the presence of an additional ion series exhibiting a mass-to-charge ratio of 857.8 m/z and 1071.8 m/z . These ions, which were determined to be the $[M+5H]^{+5}$ and $[M+4H]^{+4}$ charged species, represent a mass difference of +97.1 Da when compared to the expected mass of exenatide. This impurity, which accounts for up to 40% of the sample based on spectral abundance, was overlooked using LC-UV alone, demonstrating the value that orthogonal mass detection provides in confirming sample identity as well as efficiently screening for impurities in manufacturing settings.

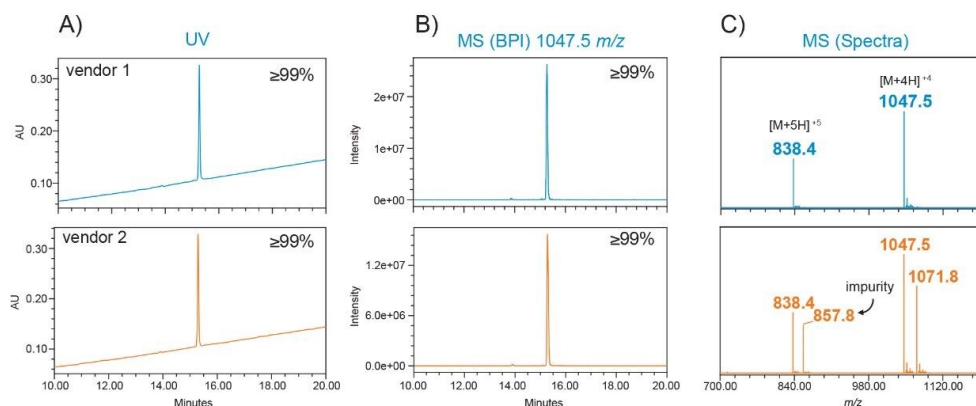


Figure 3. Exenatide from two vendors were compared for purity via an ACQUITY QDa II Mass Detector. (A) UV chromatograph. (B) Base peak intensity chromatograph. (C) Spectra of the main species peak.

Supporting OOS Investigations

Furthermore, LC-UV/MS workflows offer the capability to support more informative analyses as part of OOS investigations. To demonstrate this, both samples were analyzed at a peptide level to gain more insights into the detected impurity. Using RapiZyme Trypsin, a quick 30-minute digestion was carried out on the samples to generate four unique peptide fragments as shown in Figure 4A. These four fragments are readily separated using reversed-phase liquid chromatography (Figure 4B) and can be identified by comparing the observed masses with expected peptide masses obtained by in silico digestion (Table, Figure 4A). Exenatide from vendor 2 generated a fifth fragment with an observed mass of 1,119.5 Da based on the ion series shown in the bottom of Figure 4B. As indicated in the table, the mass difference when compared to the four expected fragment masses could represent an insertion event of a proline, glutamine, lysine, or glutamic acid within ± 1.0 Da accuracy for peak 1 and 2. The close agreement between the observed intact mass difference (Figure 3, +97.1 Da) and peptide fragment T4 mass difference (Table, Figure 4A), putatively suggests the observed impurity is related to a proline insertion. Subsequent confirmation of the insertion event was performed using Waters Xevo G3 QToF Mass Spectrometer to perform high resolution mass analysis and sequence analysis. As shown in Figure 5, The UNIFI Scientific Information System sequencing software was able to confirm the impurity as a proline insertion occurring in the proline rich region of the C-terminus end of exenatide from vendor 2. This data demonstrates that the ACQUITY QDa II Mass Detector not only has value in providing orthogonal mass data to expedite the detection of impurities but can be utilized to provide insightful data to avoid costly mistakes such as process

deviations in the manufacturing of GLP-1 analogs.

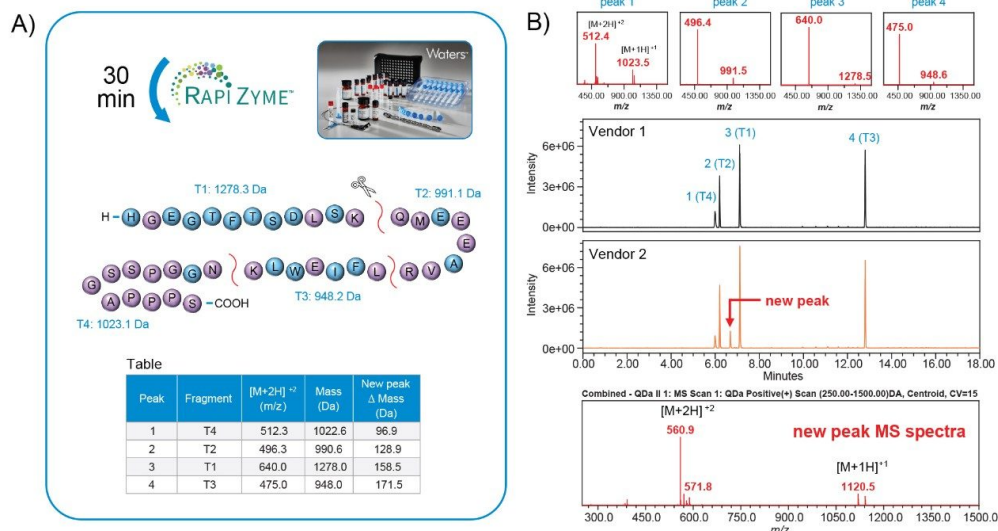


Figure 4. (A) Trypsin digestion of exenatide produced four unique peptide fragments. (B) Vendor 1 sample generated four peaks matching the expected masses. Vendor 2 sample generated a fifth peak suggesting the insertion of an amino acid.

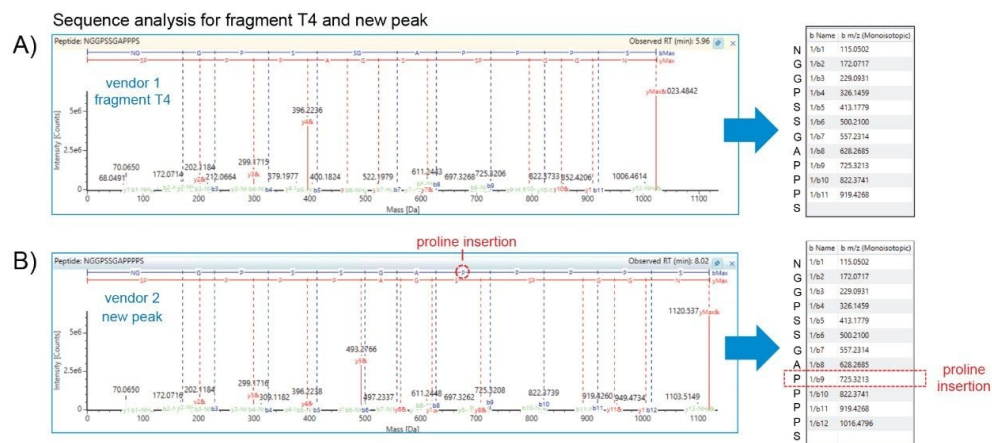


Figure 5. HRMS sequence analysis of (A) fragment T4 in vendor 1 sample and (B) the new peak in vendor 2 sample, which contains an additional proline.

Conclusion

Integrated LC-UV/MS workflows significantly enhance the analytical capabilities of supporting laboratories by providing complementary, orthogonal mass data. This enables faster, more confident decision-making, improving overall lab productivity without compromising safety or regulatory compliance.

In this study, the ACQUITY QDa II Mass Detector, used as an in-line mass detector, successfully identified a GLP-1 impurity that would likely have gone undetected in a UV-only workflow, highlighting its critical role in impurity analysis. As a compliance-ready solution suitable for deployment in QC environments, the ACQUITY QDa II Mass Detector reduces the burden on supporting labs by streamlining workflows, enhancing impurity detection, and helping ensure drug safety and efficacy all while meeting regulatory requirements with confidence.

References

1. Yu, M. *et al.* Battle of GLP-1 Delivery Technologies. Advanced drug delivery reviews. (2018) 130:113-130. DOI: 10.1016/j.addr.2018.07.009.

Featured Products

Arc Premier System <<https://www.waters.com/nextgen/global/products/chromatography/chromatography-systems/arc-premier-system.html>>

Xevo G3 QToF Mass Spectrometer <<https://www.waters.com/nextgen/global/products/mass-spectrometry/mass-spectrometry-systems/xevo-g3-qtof.html>>

ACQUITY QDa II Mass Detector <<https://www.waters.com/nextgen/global/products/mass-spectrometry/mass-spectrometry-systems/acquity-qda-ii-mass-detector.html>>

RapiZyme Trypsin <<https://www.waters.com/nextgen/global/products/standards-and-reagents/rapizyme-trypsin-mass-spectrometry-ms-grade.html>>

Empower Chromatography Data System (CDS) <<https://www.waters.com/nextgen/global/products/informatics->

[and-software/chromatography-software/empower-software-solutions/empower-cds.html>](#)

720008800, May 2025



© 2025 Waters Corporation. All Rights Reserved.

[Condizioni d'uso](#) [Informativa sulla privacy](#) [Marchi di fabbrica](#) [Opportunità professionali](#)
[Informativa legale e relativa alla privacy](#) [Cookie](#) [Preferenze cookie](#)