

Note d'application

## Multi-Reflecting Time of Flight-MS: A Novel Technology for In-depth mAb Subunit Characterization

---

Jonathan Fox, Ying Qing Yu, Scott J. Berger, Nick Pittman

Waters Corporation

### Application Brief

This is an Application Brief and does not contain a detailed Experimental section.

---

### Abstract

In this Technology Brief, we demonstrate the use of the ACQUITY™ Premier UPLC System coupled to the Xevo™ Multi-reflecting Time-of-Flight (MRT) Mass Spectrometer, for the analysis of mAb Subunit derived from the NIST Reference mAb standard. The Waters INTACT Mass™ App within waters\_connect™ Software Platform was used to process the data, providing comprehensive insights into the product variants localized to each of the subunits. The results highlight the high sensitivity, high mass resolution and consistent sub ppm mass accuracy of the Xevo MRT MS platform, along with the capability for integrated data acquisition, processing, and review using the waters\_connect informatics platform INTACT Mass Application.

### Benefits

- High levels of sensitivity and dynamic range coupled with the ability to generate subunit data mass accuracy in the low to sub-ppm range allow for in-depth mAb subunit characterization and for detection of subtle

differences and modifications

- Excellent data reproducibility facilitates statistical comparisons, allowing for confident interpretation of product, and process variation and assessments of product comparability
- Integrated compliance-ready app-based workflow for streamlined acquisition, processing and review of subunit data enables more people in an organization to be successful with subunit based LC-MS analysis, and limits training required to be proficient
- Efficient data analysis workflows combining automated peak detection, deconvolution, mass confirmation and purity analysis calculations, enables higher throughput analysis with reduced effort spent on data review, and less concerns over data transcription and manual calculation errors

---

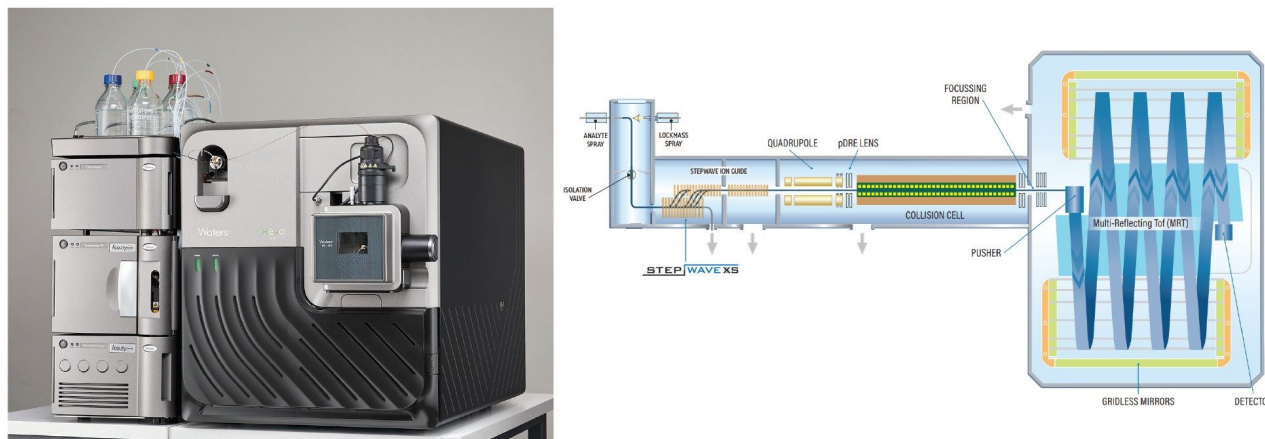
## Introduction

Subunit based analysis of monoclonal antibodies has gained favor as an analytical tool for characterization and monitoring of product variation. Subunits typically require far simpler sample preparation prior to LC-MS analysis, compared to peptide mapping, and can reveal lower levels of product variation vs. Intact mAb analysis due to the division of the 150 kD mAb into roughly 25 kD subunits.

The Xevo MRT Mass Spectrometer System uses a novel detector geometry and instrument design to deliver exceptional sensitivity, dynamic range, mass resolution, and mass accuracy for mAb subunit analysis. This Q-ToF System incorporates a novel multi reflecting time-of-flight design to effectively extend the ion flight path, resulting in mass resolutions of up to 100K that are independent of scan rate, and remain consistent across a wide  $m/z$  acquisition region. The dual gain ADC detection system enables greater sensitivity and a wide dynamic range while delivering sub-ppm to low ppm mass accuracy for biomolecule analysis. This combination of high resolution, sensitivity and mass accuracy enables detailed protein characterization analyses that are crucial for understanding the structure, and function of biopharmaceuticals. The Xevo MRT Mass Spectrometer System can detect and characterize complex and lower intensity protein variants such as those arising from differential N-terminal processing, glycosylation and oxidation, all of which can significantly impact the efficacy, stability, and safety of biopharmaceuticals.

In this study, collected data were processed using the waters\_connect INTACT Mass application, allowing researchers to confirm product identify, and profile variation on the individual mAb subunits. By providing these

detailed insights into the molecular composition of biopharmaceutical products during early characterization studies, the Xevo MRT Mass Spectrometer System helps ensure consistency and stability of final product using this same approach during later development stages to ensure quality and consistency of biotherapeutic products as they are brought through commercialization.<sup>1,2</sup>



*Figure 1. The ACQUITY Premier UPLC and Xevo MRT Mass Spectrometer System. A multi-reflectron enabled MS designed for high performance analysis of biologics and biopharmaceuticals.*

## Experimental

### Sample

Waters mAb (NIST mAb) Subunit Standard, 25 µg in vial, Waters p/n: [186008927](https://www.waters.com/nextgen/global/shop/standards--reagents/186008927-mab-subunit-standard.html) <  
<https://www.waters.com/nextgen/global/shop/standards--reagents/186008927-mab-subunit-standard.html>>  
was prepared by adding 100 µl Milli-Q water to resulting in a concentration of 250 ng/µl.

Ten replicate 250 ng injections of the Waters mAb Subunit Standard were acquired and processed using the waters\_connect INTACT Mass App. Automated chromatographic peak selection and spectral deconvolution were employed for streamlined mass confirmation, impurity profiling, and purity assessments.

The theoretical mass of subunit species are displayed below.

## Theoretical Mass Table

Subunit	Avg theoretical mass (Da)	Formula
Light Chain (LC)	23127.5093	C1020H1578N270O330S7
Fd' Fragment	25688.8626	C1066H1641N281O322S7
Fc/2 Fragment		
Fc/2 + A2	25032.7830	C1114H1727N285O356S7
Fc2 + FA2	25235.9756	C1122H1740N286O361S7
Fc2 + FA2G1	25398.1162	C1128H1750N286O366S7
Fc2 + FA2G2	25560.2568	C1134H1760N286O371S7
Fc2 + FA2G2Ga1	25722.3974	C1140H1770N286O376S7

## Method Conditions

### LC Conditions

LC system:	ACQUITY Premier UPLC System (Binary)
Detection:	UV 280 nm
Vials:	TruView LCMS Certified 12 x 32 mm Screw Neck Vial, Total Recovery, with Cap and Preslit PTFE/Silicone Septum (p/n: 186005663CV)
Column:	ACQUITY Premier Protein BEH C4, 300 Å, 1.7 µm 2.1 mm x 50 mm (p/n: 186010326)
Column temperature:	60.0 °C
Sample temperature:	6.0 °C
Injection volume:	1 µL
Flow rate:	0.400 ml/min

Mobile phase A:

H<sub>2</sub>O 0.1% formic acid

Mobile phase B:

ACN 0.1% formic acid

## Gradient Table

Time (min)	Flow (mL/min)	%A	%B	Curve
0.00	0.400	80	20	Initial
0.50	0.400	80	20	6
7.40	0.400	60	40	6
7.50	0.400	20	80	6
8.00	0.400	20	80	6
8.10	0.400	80	20	6
10.00	0.400	80	20	6

## MS Conditions

MS system:

Xevo MRT Mass Spectrometer

Mode:

MS

Mass range:

400–4000 *m/z*

Polarity:

Positive

Scan rate:

1 Hz

Cone voltage:

40 V

Cone gas:

0 L/hr

Source temperature:

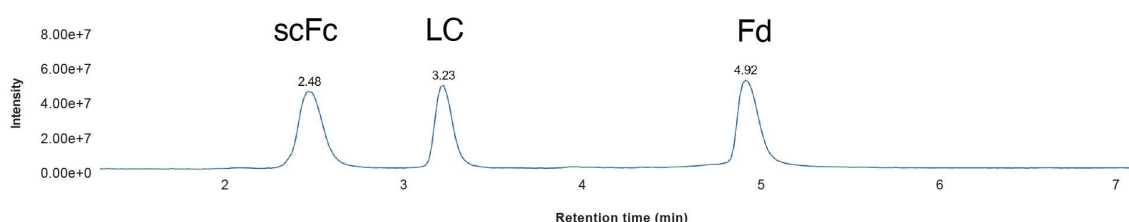
120 °C

Desolvation temperature:	500 °C
Desolvation gas:	800 L/hr
Capillary voltage:	3.00 kV

---

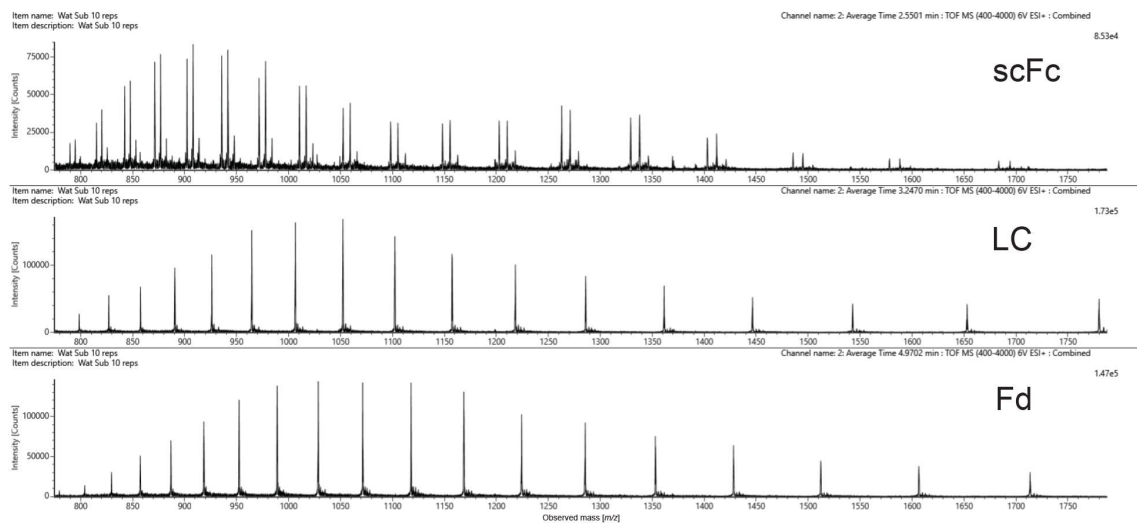
## Results and Discussion

The mAb Subunit analysis provides several advantages over peptide mapping for monoclonal antibody (mAb) analysis. It features faster and simpler workflows with fewer sample preparation steps, enabling consistency of samples for analysis and enabling the simultaneous characterization of multiple attributes at the domain level, making it a valuable tool for antibody characterization and product quality monitoring. In this study, data on a Waters subunit standard derived from the NIST mAb Reference Standard was acquired on the ACQUITY Premier UPLC-Xevo MRT Mass Spectrometer System to assess overall workflow performance and report specific instrument capabilities for mass accuracy, mass resolution, and sensitivity. Figure 2 through 5 illustrate the chromatographic separation of the IdeS digested subunits (Figure 2), as well as the raw (Figure 3 and 4) and processed data (Figure 5), that convey system performance, and figures of merit for this routine mAb characterization approach.



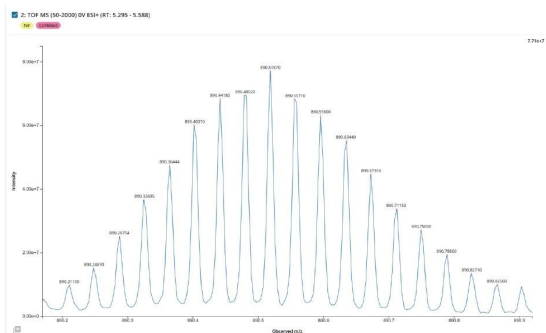
*Figure 2. RP LC-MS Chromatographically resolved separation of reduced IdeS NIST mAb subunits, allowing for detailed analysis, and assignment of the product variation on each isolated subunit.*

---



*Figure 3. Summed raw  $m/z$  spectrum for each IdeS digested NIST mAb subunit, illustrating their charge state envelopes with each peak representing a sequential charge state. The population of glycoforms located on the mAb HC is localized to the scFc fragment and can be visualized on each charge state.*

## Light chain $[M+26H]^{26+}$



## Light chain $[M+12H]^{12+}$

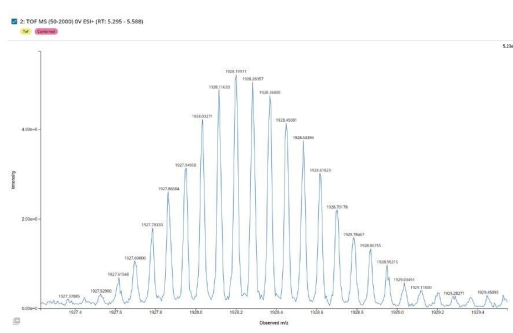


Figure 4. High-resolution MS data enables the observation of isotopically resolved spectra for each of the 25 kD subunit charge states, with the 26+ and 12+ charge states displayed. While the miniscule monoisotopic peak for the 25 kD subunit is not readily visualized in the raw data, the systematic spacing between isotopic peaks for each given charge state can be recognized by a charge deconvolution algorithm to return an observed monoisotopic or average mass for the subunit.

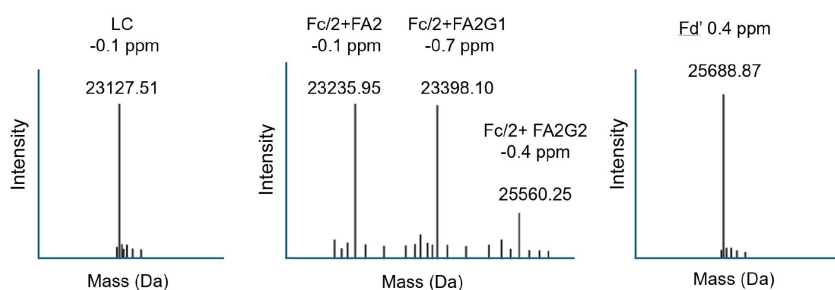


Figure 5. BayesSpray deconvoluted spectra, for each of the mAb IdeS digest subunits, produced using the Auto Deconvolution settings within the waters\_connect INTACT Mass App. Deconvoluted average mass errors less than +/- 2 ppm were observed for all subunit species (many sub-ppm) including for the glycosylated Fc/2 species.

The waters\_connect INTACT Mass App can be used to automate the process of mass confirmation and purity



assessment for a wide range of biomolecule classes.

The output of automated INTACT Mass App LC-MS analysis of the IdeS digested NIST mAb subunits was produced using the BayesSpray deconvolution algorithm. Processed data (Figure 6) is displayed as it appears in the INTACT Mass App data review window. The Xevo MRT Mass Spectrometer based analysis enables the differentiation of closely spaced glycoform peaks, while the increased sensitivity allows for the detection of lower-abundance glycovariants with mass errors consistent across all glycovariants.

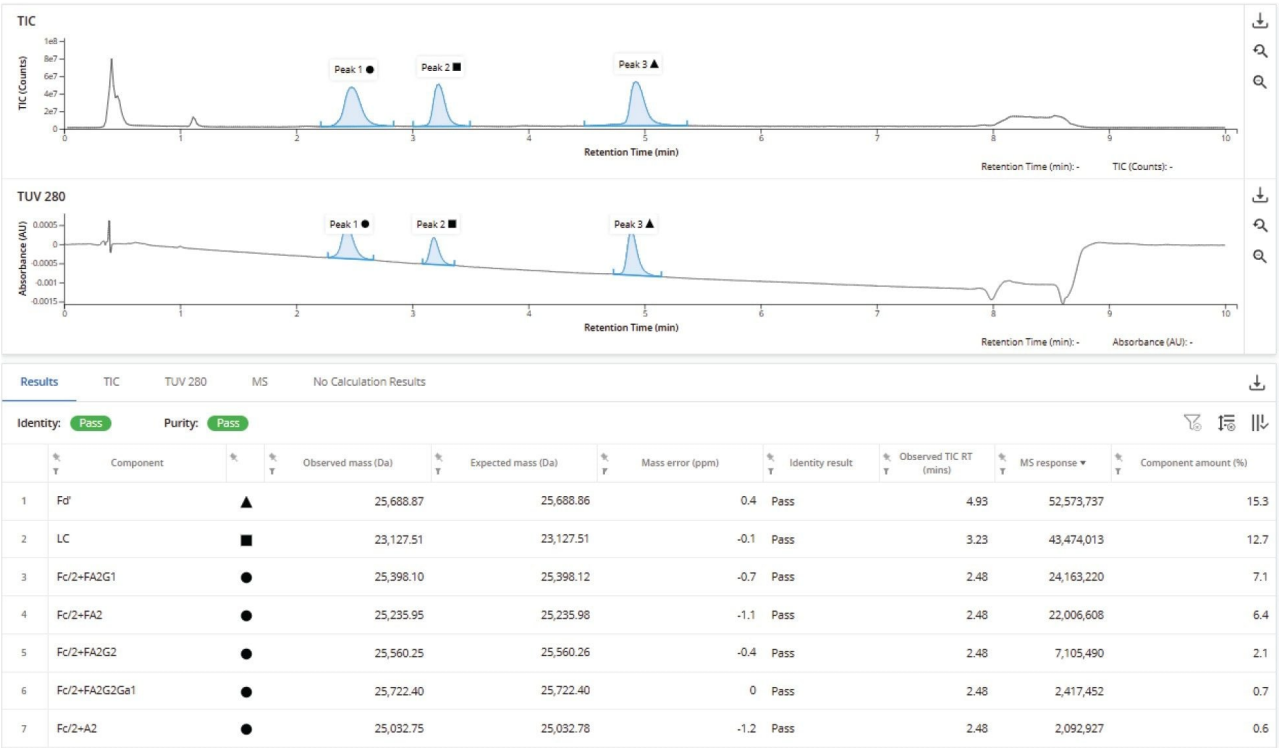
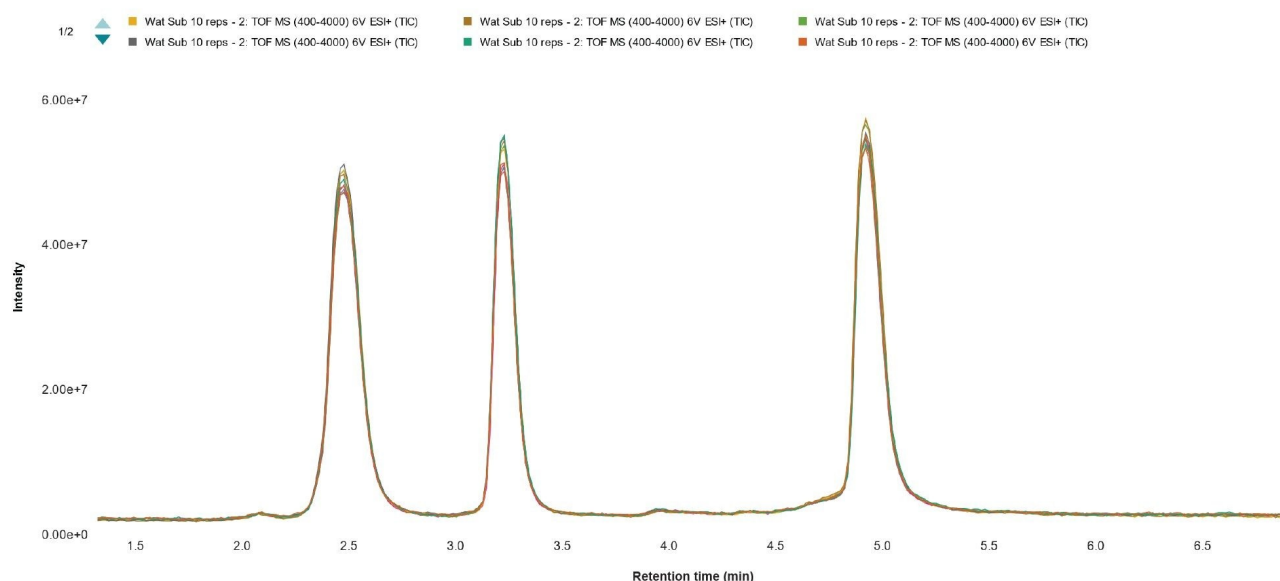


Figure 6. INTACT Mass Deconvoluted IdeS digested subunit results from a single analysis of the NIST mAb IdeS subunit sample.

The chromatographic TIC response chromatograms from ten replicate subunit injections (Figure 7) reveal the overlap of consistent UPLC chromatography and consistent LC-MS detection response across the replicates. This is important not only for confident assessment of an individual sample, but for setting expectations of assay performance and supporting comparability studies from multiple batches or production processes.

This consistency is also apparent in the analysis of data from the deconvoluted mass spectral results from the 25 kDa Fc subunits, this time employing optimized deconvolution parameters (optimized elemental composition) to further refine the measured subunit mass. The results demonstrate a mean mass error of approximately 220 parts per billion (ppb), with a root mean square (RMS) error of 320 ppb (Figure 8). These findings underscore the high precision and reproducibility of the mass spectrometric measurements for this protein subunit under these simple assay conditions.

Finally, the deconvoluted mass spectral response data for two of the lower intensity glycoforms of the digested Fc subunit (Figure 9) similarly demonstrates the consistency of relative glycoform quantification over the ten replicate injections.



*Figure 7. Overlay TIC Chromatograms for ten replicate NIST mAb IdeS digest subunit LC-MS analyses indicating consistent LC retention and MS detector response.*

Replicate	Component	Obs. mass (Da)	Mass error (ppm)	TIC RT (mins)	MS response (Counts)	Component (Rel %)
1	Fd'	25688.85	-0.58	4.93	73934405	76.78
2	Fd'	25688.86	-0.04	4.92	73215891	77.31
3	Fd'	25688.85	-0.48	4.92	75674365	77.69
4	Fd'	25688.86	-0.20	4.93	77445004	77.27
5	Fd'	25688.86	-0.22	4.93	82134796	75.1
6	Fd'	25688.85	-0.34	4.93	82259254	77.03
7	Fd'	25688.85	-0.31	4.93	82355185	75.86
8	Fd'	25688.86	-0.16	4.93	77998917	74.97
9	Fd'	25688.87	0.33	4.93	77066056	77.26
10	Fd'	25688.86	-0.20	4.92	76171586	77.57
Avg		25688.86	-0.22	4.93		76.69
RMS error			0.32			
STD dev		0.01	0.25	0		1.01

Figure 8. The 25 kD Fd' subunit deconvoluted mass was measured from 10 replicate injections of IdeS digested NIST Reference mAb sample using optimized deconvolution settings (specified elemental composition) that produced an average mass error of ~220 ppb (RMS error 320 ppb) with a relative abundance of ~77% and 1% standard deviation in the deconvoluted component intensity across the ten replicate analyses.

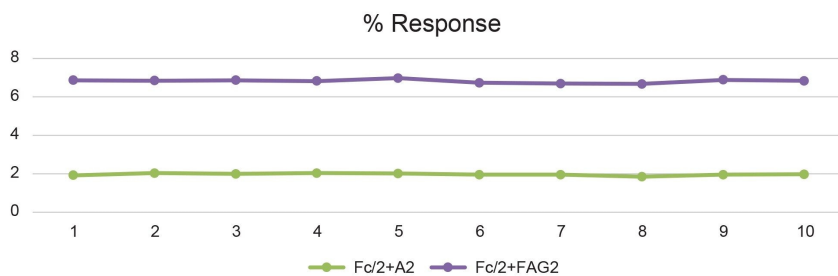


Figure 9. percentage relative abundance of two Fc lower abundance glycoforms across the 10 replicate injections.

## Conclusion

Subunit based analysis can provide great insight into the product variation of a monoclonal antibody, both for the initial characterization, and for ongoing analyses supporting product and process development. The capabilities of the Xevo MRT Mass Spectrometer for subunit based analysis include the ability to maintain consistent performance (resolution, mass accuracy) across a broad  $m/z$  range for subunit variant charge states and spanning multiple orders of magnitude of MS response. The system's high sensitivity and sub-to low-ppm mass accuracy enables the confident assignment of lower-abundance modifications, with the consistency of measurement to enable statistical validation of the performance of the method, and facilitate multi-batch quality and process development QbD studies.

This exceptional MS detection performance was complemented with a streamlined automated compliant-ready workflow, within the waters\_connect INTACT Mass App that supported integrated data acquisition, processing, review, and reporting for subunit data acquired from individual samples, and summarized across a larger sample set.

Overall, mAb subunit based analysis on the Xevo MRT Mass Spectrometer System has been demonstrated to be a robust and efficient platform for enabling biopharmaceutical analysts to make confident decisions on biotherapeutic development and commercialization without the complications that can arise from manual data processing/reporting using spreadsheets and other third party software tools.

For more information, please visit <https://www.waters.com/nextgen/global/products/mass-spectrometry/mass-spectrometry-systems/xevo-mrt.html> <<https://www.waters.com/nextgen/us/en/products/mass-spectrometry/mass-spectrometry-systems/xevo-mrt.html>>

---

## References

1. Xevo MRT | Multi Reflecting Time of Flight Mass Spectrometer | Waters <<https://www.waters.com/nextgen/global/products/mass-spectrometry/mass-spectrometry-systems/xevo-mrt.html>> .
  2. Lisa Reid, Matthew E. Daly, Lee A. Gethings, Jayne Kirk. Metabolomics Workflow using a Xevo™ MRT Mass Spectrometer. Waters Application Note, [720008552](#), October 2024.
  3. <https://www.waters.com/nextgen/global/applications/biopharma-and-pharma/protein-therapies/intact-and->
-

[subunit-protein-analysis-solutions.html](https://www.waters.com/nextgen/en/applications/biopharma-and-pharma/protein-therapies/intact-and-subunit-protein-analysis-solutions.html) <<https://www.waters.com/nextgen/en/applications/biopharma-and-pharma/protein-therapies/intact-and-subunit-protein-analysis-solutions.html>> .

4. Henry Shion, Patrick Boyce, Scott J. Berger, Ying Qing Yu. INTACT Mass™ - a Versatile waters\_connect™ Application for Rapid Mass Confirmation and Purity Assessment of Biotherapeutics. Waters Application Note, [720007547](#), February 2022.

---

## Featured Products

[ACQUITY Premier System](#) <

<https://www.waters.com/nextgen/global/products/chromatography/chromatography-systems/acquity-premier-system.html>>

[Xevo MRT Mass Spectrometer](#) <<https://www.waters.com/nextgen/global/products/mass-spectrometry/mass-spectrometry-systems/xevo-mrt.html>>

[waters\\_connect Informatics Platform](#) <[https://www.waters.com/nextgen/global/products/informatics-and-software/waters\\_connect/waters-connect-informatics-platform.html](https://www.waters.com/nextgen/global/products/informatics-and-software/waters_connect/waters-connect-informatics-platform.html)>

720008755, March 2025



© 2025 Waters Corporation. All Rights Reserved.

[Conditions d'utilisation](#) [Déclaration de confidentialité](#) [Marques](#) [Carrières](#) [Mentions légales](#)  
[et déclaration de confidentialité](#) [Cookies](#) [Préférences de cookies](#)