

Utilizing the New Xevo™ TQ Absolute IVD for the UPLC-MS/MS Analysis of Serum Estrogens for Clinical Research

Robert Wardle, Gareth Hammond

Waters Corporation

这是一份应用简报，不包含详细的实验部分。

仅供研究使用，不适用于诊断。

Abstract

This application brief demonstrates the high analytical sensitivity and quantitative performance of the Xevo TQ Absolute IVD Mass Spectrometer for the analysis of serum estrogens for clinical research.

Benefits

- Utilizing the Xevo TQ Absolute IVD for low level quantification of 17 β -estradiol and estrone
- Simple liquid/liquid sample preparation method
- UPLC separation of 17 β -estradiol and estrone for selective detection

Introduction

The two major biologically active estrogens in non-pregnant humans are 17 β -estradiol (E2) and estrone (E1). E2 is produced primarily in the ovaries and testes by the aromatization of testosterone, whereas most of E1 is derived from androstenedione. E2 can be metabolized to E1 and conversion of E1 to E2 is also possible, making the measurement of both compounds desirable.

The greatest challenge when analyzing E2 and E1 is the requirement to measure down to low concentration levels for certain clinical research applications. Currently, some immunoassay techniques lack analytical sensitivity and more commonly selectivity, while published LC-MS/MS methods use large sample volumes with complex sample extraction, often including derivatization.



Figure 1. ACQUITY™ UPLC™ I-Class FL IVD and Xevo TQ Absolute IVD Mass Spectrometer.

Enhanced analytical sensitivity, robustness, and reliability over six orders of linear dynamic range is achieved using the Xevo TQ Absolute IVD Mass Spectrometer, featuring StepWave™ XS ion transfer optics and an Xtended Dynamic Range (XDR). Coupling this with a simple sample preparation method and

UPLC™ separation of the estrogens allows for a highly selective and analytical sensitivity method to analyze E2 and E1 for clinical research.

Experimental

Sample Preparation and UPLC-MS/MS Analysis

E2 & E1 certified reference solutions and their stable labeled internal standards ($^{13}\text{C}_3$) were purchased from Merck (Gillingham, UK). Calibrators were prepared in a surrogate matrix of MSG4000 stripped serum purchased from Golden West Biologicals (Temecula, CA). The calibration range for E2 was 2–1000 pg/mL and 1–1000 pg/mL for E1. The QC samples were prepared in a surrogate matrix of MSG4000 stripped human serum purchased from Golden West Biologicals (Temecula, CA) at 3.2 pg/mL, 10.5 pg/mL, and 700 pg/mL. Water, methanol, and ethyl acetate were purchased from Fisher Scientific (Loughborough, UK). Ammonium fluoride and hexane were purchased from Merck (Gillingham, UK).

To convert conventional mass units (pg/mL) to SI units (pmol/L), multiply by 3.671 for E2 & 3.699 for E1.

To 250 µL of sample, 20 µL of internal standard was added and mixed. Liquid/liquid extraction was performed by adding 1 mL of 85:15 (v:v) hexane:ethyl acetate, mixing thoroughly for 10 minutes. Samples were centrifuged at 4000 g for 5 minutes prior to 700 µL of the top organic layer being transferred into a 96-well plate containing 1 mL glass inserts (Waters p/n: [186000855 < https://www.waters.com/nextgen/global/shop/vials-containers--collection-plates/186000855-96-well-plate-with-extended-1-ml-glass-inserts-18-pk.html>](https://www.waters.com/nextgen/global/shop/vials-containers--collection-plates/186000855-96-well-plate-with-extended-1-ml-glass-inserts-18-pk.html)). Samples were evaporated to dryness and reconstituted in 20 µL of methanol followed by 30 µL of distilled water.

Samples were subsequently injected onto an ACQUITY UPLC I-Class FL System and Xevo TQ Absolute IVD Mass Spectrometer, utilizing a water/methanol/ammonium fluoride gradient and a Waters™ CORTECS™ Phenyl Column (Waters p/n: [186008319 < https://www.waters.com/nextgen/us/en/shop/columns/186008319-cortecs-phenyl-column-90a-27--m-21-mm-x-50-mm-1-pk.html>](https://www.waters.com/nextgen/us/en/shop/columns/186008319-cortecs-phenyl-column-90a-27--m-21-mm-x-50-mm-1-pk.html)) as shown in Table 1.

Time (min)	Flow rate (mL/min)	%A	%B	Curve
Initial	0.3	90	10	Initial
0.50	0.3	60	40	11
3.50	0.3	30	70	6
3.75	0.5	2	98	11
4.25	0.5	90	10	11
4.70	0.3	90	10	11

Table 1. Gradient Table for the separation of E2 and E1, having a total run time of 4.75 minutes.

Multiple Reaction Monitoring (MRM) transitions, quantifier (quan) and qualifier (qual), for the detection of all analytes are shown in Table 2, having a capillary voltage of 2.2 kV in electrospray negative ionization mode, with resolution settings at 0.7 FWHM for MS1 and MS2.

Analyte	Precursor ion (m/z)	Product ion (m/z)	Cone voltage (V)	Collision energy (kV)
E2 (Quan)	271.2	145.0	40	38
E2 (Qual)	271.2	183.0	40	38
[¹³ C ₃]-E2	274.2	148.0	40	38
E1 (Quan)	269.2	145.0	40	38
E1 (Qual)	269.2	183.0	40	38
[¹³ C ₃]-E1	272.2	148.0	40	38

Table 2. MRM parameters of E2 and E1 quantifier ions, qualifier ions, and their internal standards.

Results and Discussion

Chromatographic separation was achieved for E2 and E1, having an injection-to-injection time of approximately 5.5 minutes. A typical chromatogram is shown in Figure 2.

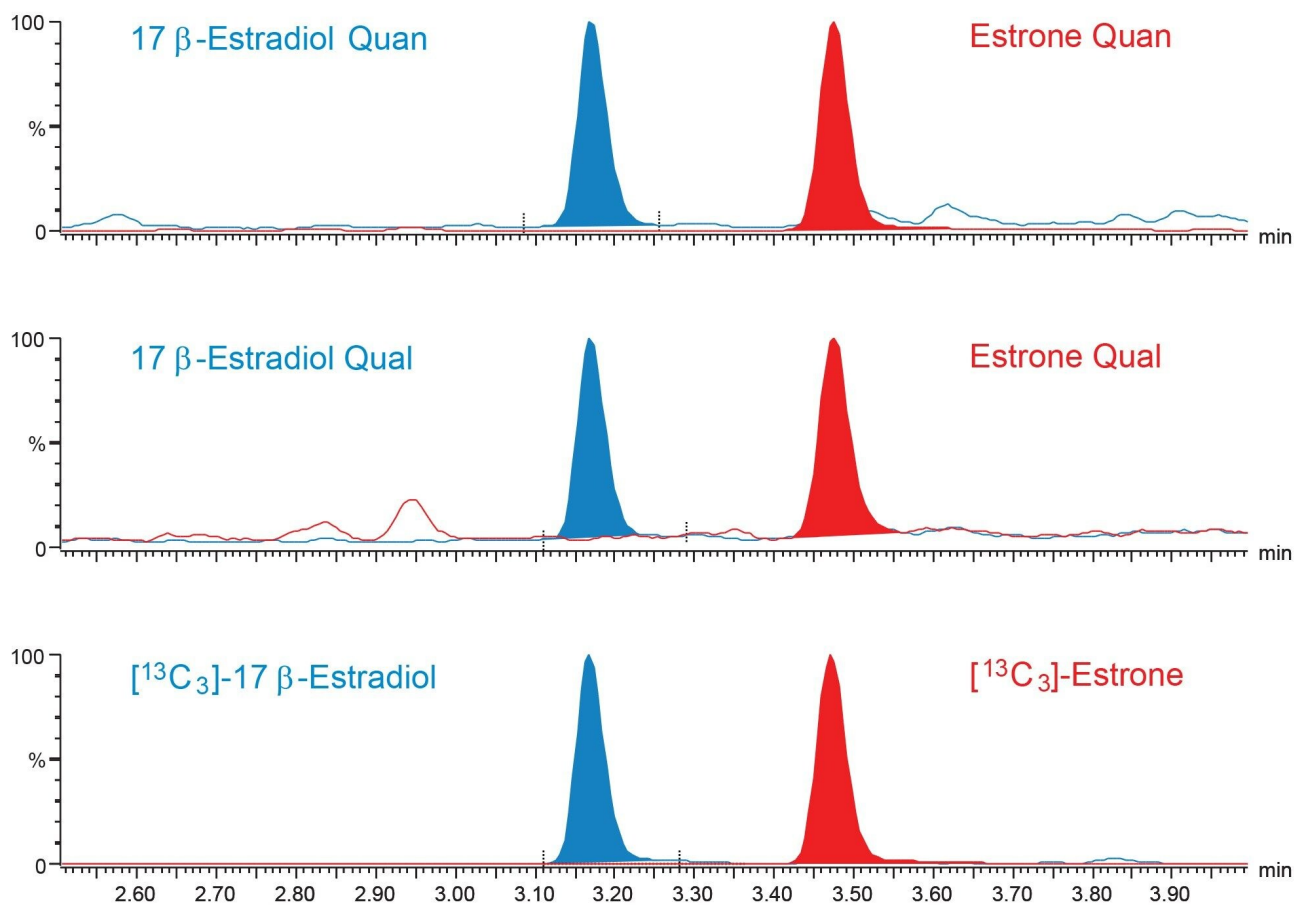


Figure 2. Typical Chromatograms of E2 and E1 extracted from a UK NEQAS sample at 21.0 pg/mL and 34.0 pg/mL respectively.

Calibration curves were shown to be linear over the calibration ranges described, having correlation coefficients of >0.99 and %bias of within $\pm 15\%$ ($\pm 20\%$ for Calibrator 1) for E2 and E1 across 8 occasions.

Precision performance was assessed by extracting and analyzing five replicates of the low, mid, and high QC samples on each of five occasions. Within-run and total precision were $\leq 5.9\%$ CV for all steroid hormones for all concentration levels and is summarized in Table 3.

	17 β -Estradiol		Estrone	
	Repeatability (%CV)	Total (%CV)	Repeatability (%CV)	Total (%CV)
QC L – 3.2 pg/mL	3.4	3.4	2.9	5.9
QC M – 10.5 pg/mL	2.8	3.0	2.4	3.4
QC H – 700 pg/mL	3.0	4.8	2.9	4.3

Table 3. Precision Performance Summary of E2 and E1 Extracted and Analyzed on the ACQUITY UPLC I-Class FL and Xevo TQ Absolute IVD.

Analytical Sensitivity was assessed by spiking Golden West Biologicals MSG4000 stripped serum at low concentration levels. Ten replicates of each sample were then extracted and analyzed on each of four occasions. %CVs of $\leq 20\%$ and biases of $\leq 15\%$ were obtained at 1.0 pg/mL for E2 and E1, however, a signal to noise ratio (peak to peak) of $\geq 10:1$ was not achieved at this level for E2, therefore an LLoQ of 3 pg/mL was selected for this analyte. Figure 3 shows typical chromatograms of E2 and E1 at these concentrations. While an LLoQ of 1 pg/mL was not achieved, a blank stripped serum sample can be differentiated from the same serum spiked at 1 pg/mL of E2.

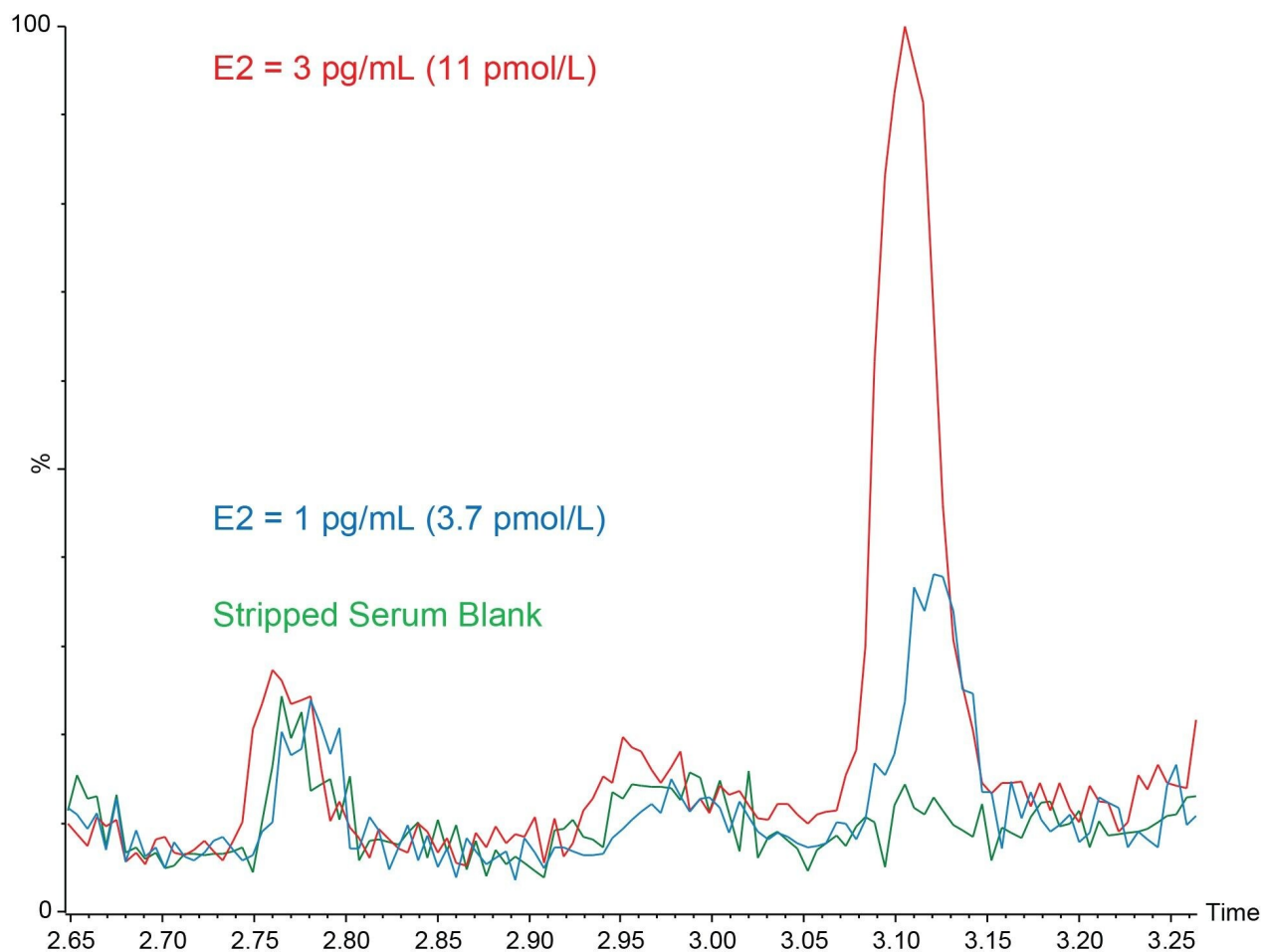


Figure 3. Example Chromatograms of a blank and low level low-level samples in stripped serum for E2.

Matrix effect investigations were performed using serum from six individuals. The endogenous peak areas were separately quantified and post-spiked samples at low and high concentration levels were adjusted using the mean peak areas to enable comparison to solvent spiked samples. While some suppression and enhancement in the matrix factor results was observed when looking at the peak areas, these were compensated for by the internal standard (Table 4).

Compound	Spiked concentration (pg/mL)	Matrix factor based on peak area (range)	Matrix factor based on concentration (range)
17β-Estradiol	20	0.917 (0.873–1.063)	0.962 (0.911–1.023)
	450	0.897 (0.874–0.938)	0.940 (0.912–0.973)
Estrone	20	1.313 (1.201–1.429)	0.976 (0.915–1.031)
	450	1.253 (1.188–1.321)	0.938 (0.908–0.957)

Table 4. Matrix Factor Summary for E2 and E1.

Accuracy was assessed by analyzing 40 UK NEQAS E2 samples with calculated concentrations compared to the mass spectrometry laboratory trimmed means. The correlation for E2 can be seen in Table 5 and Figure 4, showing excellent agreement with the EQA scheme.

Scheme	Deming fit equation	Linear Fit (r^2)	Bland Altman mean bias
UK NEQAS E2	$y = 0.971x + 4.874$	0.994	-4.15%

Table 5. Accuracy Summary for E2.

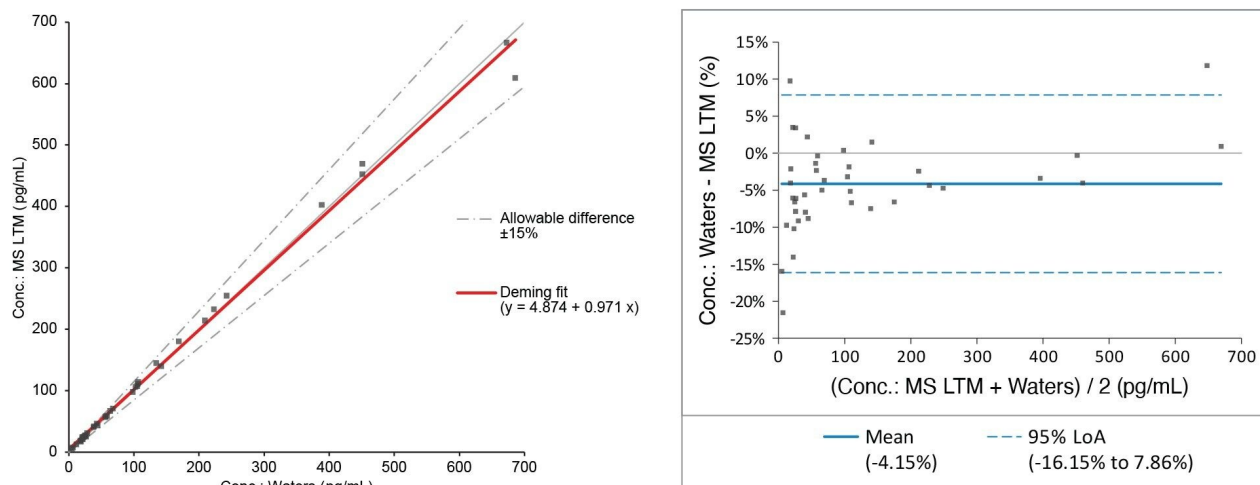


Figure 4. Deming Fit and Bland Altman Plots for Comparison with the UK NEQAS E2 Scheme.

Conclusion

The Xevo TQ Absolute IVD has demonstrated excellent analytical sensitivity and quantitative performance for the analysis of 17 β -estradiol and estrone for clinical research, having the following method performance characteristics:

- Calibration curves had correlation coefficients (r^2) of >0.99 for E2 and E1 for all runs
- Within-run and total precision results of $\leq 5.9\%$ CV
- Analytical sensitivity concentrations of 3.0 pg/mL (11.1 pmol/L) for E2 and 1.0 pg/mL (3.7 pmol/L) for E1 were achieved, having a %CV of $\leq 20\%$, bias of $\leq 15\%$ and S:N (ptp) of $>10:1$. Furthermore, a blank stripped serum sample was able to be distinguished from the same matrix sample spiked with 1 pg/mL of E2 from only 250 μ L of sample, without the need for derivatization
- Little to no ion suppression was observed from six individuals when comparing calculated concentrations to control samples
- The method was shown to be accurate when compared to the UK NEQAS E2 scheme, having a Deming

Fit of $y = 0.971x + 4.874$ and a Bland Alman Mean Bias of -4.15%

Featured Products

MassTrak ACQUITY UPLC I-Class PLUS Xevo TQ Absolute IVD System <

<https://www.waters.com/nextgen/global/products/mass-spectrometry-systems/masstrak-acquity-uplc-i-class-plus-xevo-tq-absolute-ivd-system.html>>

MassLynx MS Software <<https://www.waters.com/513662>>

720007940, July 2023



© 2023 Waters Corporation. All Rights Reserved.

[使用条款](#) [隐私](#) [商标](#) [招聘](#) [危险化学品生产经营许可证](#) [Cookie](#) [Cookie设置](#)

[沪ICP备06003546号-2](#) [京公网安备 31011502007476号](#)