

Nota de aplicación

## Revolutionizing SPE with Otto SPEcialist: An Easy-to-Use, Software-Driven, Positive Pressure Manifold

---

Kathryn Brennan, Jonathan P. Danaceau, Paula Orens

Waters Corporation



*For forensic toxicology use only.*

This is an Application Brief and does not contain a detailed Experimental section.

---

## Abstract

This work compares Waters Otto SPEcialist, a semi-automated positive pressure sample preparation device, to the Hamilton Microlab STAR, a fully automated, vacuum equipped system, for a previously validated solid-phase extraction (SPE) application. This broadly applicable method involves the use of the Otto Software technology which provides comparable recovery to a fully automated system, and accurate, reproducible quantification of controlled drugs from urine samples in support of research in forensic toxicology.

### Benefits

- Easy transfer of methods
- Reduces error between users
- Mitigates risk of manual error
- Ensures robust and reproducible method for SPE
- Saves scientist time to perform other tasks

---

## Introduction

Sample preparation is an integral part of a workflow process that is used to extract, purify, and concentrate samples prior to instrument analysis. Most often it is considered a rate limiting step and a source of errors in an overall bioanalysis workflow.<sup>1</sup> The use of SPE, a common technique for sample preparation, can be implemented using either positive pressure with a nitrogen stream to push sample through a sorbent bed, or negative pressure with a vacuum to pull sample through a sorbent bed. There are reasons to choose one type of SPE process over another; for example, most positive pressure devices do not support processing large sample volumes so the use of a vacuum manifold is necessary. However, the use of a vacuum can have its disadvantages such as irregularities of pressure applied for individual wells and slower flow rates due to maximum pressure limits of a vacuum device.<sup>2</sup> Another concern is the need to manually adjust pressure settings during the extraction process which introduces the possibility of human error. To mitigate this issue, there are fully automated sample preparation and extraction devices available on the market, but they can be expensive and cumbersome in size. However, the need to reduce human errors is critical for the improvement of an SPE workflow.<sup>3-6</sup>

The Otto SPEcialist, a compact and semi-automated sample preparation device, combines the more efficient use of positive pressure with software that autonomously changes the applied pressure to a sorbent bed through every step of the SPE process. This revolutionary device provides an overarching solution for improving analytical consistency during sample preparation and extraction without the extra cost. Additionally, unlike most other positive pressure manifolds it can process a wide range of sample volumes whether it be on the 96-well  $\mu$ Elution scale, or a 6 cc cartridge format. The following work encapsulates the reliability that this new and seamless technology can provide when executing a solid-phase extraction method using the Otto SPEcialist Positive Pressure Manifold.

---

## Results and Discussion

A panel of 21 drugs in pooled urine samples, spiked at a low (50 ng/mL) and a high (1000 ng/mL) concentration, were extracted in three batches over three days, with an N=4 per concentration in each batch. A detailed graphic of the sample preparation process can be seen in Figure 1. All samples were prepared manually in urine prior to extraction. A recovery experiment was conducted on two different sample processing platforms. All individual samples were extracted twice for every batch. One aliquot of each recovery sample was processed using the Otto SPEcialist and the other using the Hamilton Microlab STAR. For the Otto, samples were loaded, and wash and elution solutions were added manually by the user, while the manifold applied a positive pressure ramp using a pre-programmed method. The STAR carried out all liquid handling steps and SPE autonomously. Comparison of percent recoveries for the Otto to the fully automated system were comparable with inter-day recoveries for the low and high concentrations ranging from 85–98% and 89–113%, respectively; and standard deviations below 7.7% and 3.5%, respectively. The comparison of inter-day recoveries and SDs can be seen in Appendices 1 and 2, respectively. Intra-day (Day 3) recoveries of the Otto at low and high concentrations are between 78–99%, and 83–116%, respectively with RSDs below 6.6% and 3.3%, respectively. The comparison of intraday recoveries and RSDs can be seen in Appendix 3. More information on the full panel of analytes along with a thorough experimental section and validated method can be found in the Waters Application Note [720006187EN](https://www.waters.com/nextgen/us/en/library/application-notes/2019/comprehensive-method-for-the-analysis-of-pain-management-drugs-and-drugs-of-abuse.html) <  
<https://www.waters.com/nextgen/us/en/library/application-notes/2019/comprehensive-method-for-the-analysis-of-pain-management-drugs-and-drugs-of-abuse.html>>.<sup>7</sup>

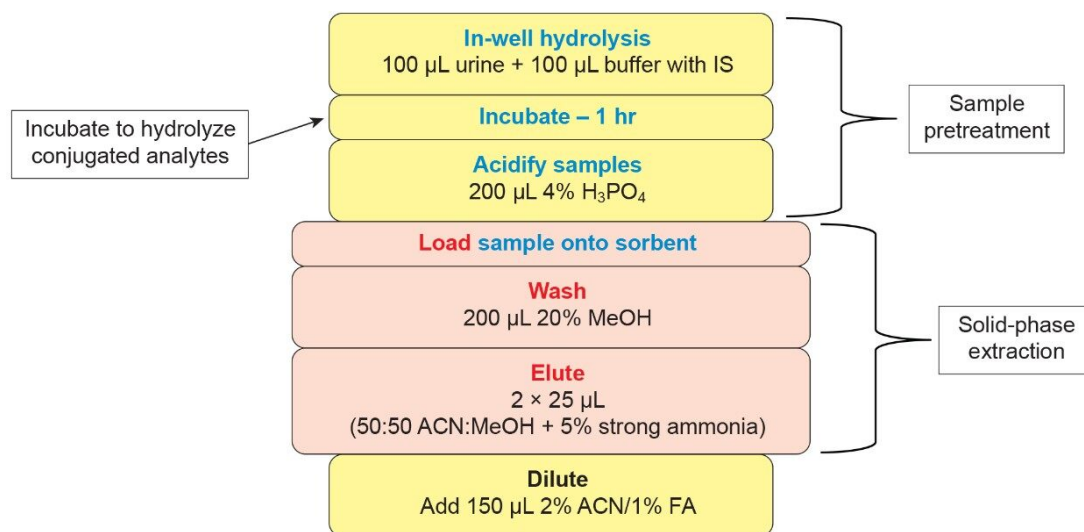


Figure 1. Oasis MCX sample preparation and SPE procedure in urine.

## Conclusion

This work demonstrates the reliability of the Otto SPEcialist Positive Pressure Manifold to perform an SPE that will give acceptable and comparable recoveries compared to a fully automated platform that involves virtually no human intervention. The Otto achieved robust and reproducible results across three days and three batches with total accuracies between 85–115% and SDs <8%. This semi-automated positive pressure device has an easy-to-use software interface, and a sleek and compact manifold that fits easily on a bench or under a hood. Methods can be transferred between devices to reduce user-to-user, and batch-to-batch errors. Unlike most fully automated systems that are costly and require a lot of time to learn how to program a method, the Otto is significantly less expensive, and its software is easy to learn for even the most novice of users. Overall, the Otto SPEcialist offers a simple and easy semi-automated approach to SPE.

## References

1. Chapter 5 Automation Tools and Strategies for Bioanalysis, In Progress In Pharmaceutical and

Biomedical Analysis, David A. Wells, Editor 2003, *Elsevier*. p. 135-197.

2. Gallert, C.; *et al.* Evaluation of An Automated Solid-Phase Extraction Method Using Positive Pressure. American Laboratory Application Note. 2015 Apr.
3. Lehmann, S.; *et al.* Determination of 74 New Psychoactive Substances in Serum Using Automated In-Line Solid-Phase Extraction-Liquid Chromatography-Tandem Mass Spectrometry. *J. Chromatogr. B.* 2017, 1064, 124-138.
4. Wei, D.; *et al.* Online and Automated Sample Extraction. *Bioanalysis.* 2015, 7(17), 2227-2233.
5. Zheng, N.; Jiang, H.; Zeng, J. Current Advances and Strategies Towards Fully Automated Sample Preparation for Regulated LC-MS/MS Bioanalysis. *Bioanalysis.* 2014, 6(18), 2441-2459.
6. Ramírez Fernández, M.d.M.; *et al.* Validation of An Automated Solid-Phase Extraction Method For The Analysis of 23 Opioids, Cocaine, And Metabolites In Urine With Ultra-Performance Liquid Chromatography-Tandem Mass Spectrometry. *J. Anal. Tox.* 2014, 38(5), 280-288.
7. Danaceau, J. P.; Freeto, S. M.; Calton, L. J. A Comprehensive Method for the Analysis of Pain Management Drugs and Drugs of Abuse Incorporating Simplified, Rapid Mixed-Mode SPE with UPLC-MS/MS for Forensic Toxicology. Waters Application Note, 2019, [720006187EN](https://www.waters.com/nextgen/us/en/library/application-notes/2019/comprehensive-method-for-the-analysis-of-pain-management-drugs-and-drugs-of-abuse.html). <  
<https://www.waters.com/nextgen/us/en/library/application-notes/2019/comprehensive-method-for-the-analysis-of-pain-management-drugs-and-drugs-of-abuse.html>>

Inter-day (N=3)	Comparison of Accuracy at 50 ng/mL		Comparison of Accuracy at 1000 ng/mL	
Compound	Otto SPEcialist	Hamilton	Otto SPEcialist	Hamilton
Oxymorphone	86.7%	93.1%	95.8%	96.5%
Hydromorphone	88.8%	95.4%	94.2%	97.9%
Dihydrocodeine	86.0%	96.5%	93.4%	97.1%
Codeine	88.9%	97.4%	95.0%	98.4%
Pregabalin	86.0%	95.2%	91.7%	94.6%
Gabapentin	86.2%	95.5%	92.3%	95.3%
Oxycodone	90.8%	102.6%	97.1%	99.9%
6-acetyl morphine	95.3%	100.9%	109.9%	107.7%
Hydrocodone	92.9%	98.8%	107.3%	106.9%
Dehydronorketamine	90.4%	97.3%	113.5%	110.4%
m-hydroxybenzoylecgonine	94.7%	101.1%	98.0%	100.6%
Ritalinic acid	88.4%	98.7%	93.9%	98.5%
Ketamine	88.5%	97.3%	95.1%	98.4%
Benzoylecgonine	93.8%	102.6%	97.1%	98.9%
7-aminoclonazepam	90.5%	100.5%	93.9%	97.8%
7-aminoflunitrazepam	95.2%	101.2%	104.6%	103.6%
Zolpidem	90.3%	98.9%	96.2%	99.7%
$\alpha$ -Hydroxytriazolam	98.3%	115.8%	89.5%	98.7%
Flunitrazepam	84.8%	90.2%	89.2%	93.1%
Temazepam	96.2%	106.3%	95.5%	100.5%
Diazepam	94.3%	102.6%	98.3%	100.3%

*Appendix 1. Inter-day accuracy comparisons between the Otto SPEcialist and the Hamilton STAR at 50 ng/mL and 1000 ng/mL.*

Inter-day (N=3)	Comparison of SDs at 50 ng/mL		Comparison of SDs at 1000 ng/mL	
Compound	Otto SPEcialist	Hamilton	Otto SPEcialist	Hamilton
Oxymorphone	4.8%	1.0%	3.1%	1.3%
Hydromorphone	4.5%	1.5%	2.3%	1.2%
Dihydrocodeine	5.4%	1.8%	2.8%	1.0%
Codeine	6.2%	2.3%	2.8%	1.7%
Pregabalin	6.4%	4.2%	2.5%	1.3%
Gabapentin	4.8%	1.8%	2.5%	1.5%
Oxycodone	3.5%	3.7%	2.4%	1.3%
6-acetyl morphine	6.3%	2.5%	3.0%	1.7%
Hydrocodone	4.0%	2.6%	2.1%	1.6%
Dehydronorketamine	5.5%	2.4%	3.5%	2.3%
m-hydroxybenzoylecgonine	5.5%	2.6%	2.5%	3.3%
Ritalinic acid	4.4%	1.6%	2.4%	1.0%
Ketamine	4.7%	1.8%	2.0%	1.0%
Benzoylecgonine	6.0%	1.8%	2.0%	2.0%
7-aminoclonazepam	5.5%	1.9%	2.1%	0.9%
7-aminoflunitrazepam	4.7%	2.2%	1.6%	1.5%
Zolpidem	4.9%	1.7%	2.3%	1.2%
$\alpha$ -Hydroxytriazolam	7.7%	3.9%	2.7%	1.8%
Flunitrazepam	4.7%	2.1%	3.5%	2.4%
Temazepam	5.9%	1.5%	2.9%	1.9%
Diazepam	6.0%	0.9%	2.7%	1.1%

*Appendix 2. Inter-day standard deviation comparisons between the Otto SPEcialist and the Hamilton STAR at 50 ng/mL and 1000 ng/mL.*



Intra-day Day 3 (N=4) Accuracy and RSDs Otto SPEcialist vs. Hamilton STAR								
Compound	Otto SPEcialist (50 ng/mL)		Hamilton (50 ng/mL)		Otto SPEcialist (1000 ng/mL)		Hamilton (1000 ng/mL)	
	Accuracy	RSD	Accuracy	RSD	Accuracy	RSD	Accuracy	RSD
Oxymorphone	90.2%	2.9%	88.3%	1.4%	102.2%	2.7%	95.6%	2.0%
Hydromorphone	90.2%	3.4%	90.6%	1.3%	96.1%	2.6%	96.1%	1.9%
Dihydrocodeine	90.1%	5.0%	93.8%	2.2%	96.5%	3.3%	96.7%	0.9%
Codeine	88.0%	5.9%	90.1%	1.3%	96.8%	2.5%	95.6%	2.6%
Pregabalin	87.2%	5.2%	90.7%	1.7%	93.5%	2.7%	94.3%	1.8%
Gabapentin	84.8%	5.6%	89.6%	2.8%	92.2%	2.5%	92.2%	2.4%
Oxycodone	95.3%	1.4%	98.1%	4.2%	98.8%	2.1%	96.8%	1.2%
6-acetyl morphine	96.8%	3.7%	97.8%	2.8%	109.5%	1.4%	105.8%	1.8%
Hydrocodone	95.2%	2.4%	93.7%	2.4%	109.0%	1.2%	105.1%	1.8%
Dehydronorketamine	91.4%	5.5%	94.5%	3.8%	115.6%	2.3%	110.2%	2.0%
m-hydroxybenzoylecgonine	92.4%	3.3%	94.6%	2.9%	98.9%	2.2%	99.6%	3.2%
Ritalinic acid	86.2%	4.6%	92.5%	1.1%	94.7%	2.2%	97.3%	1.2%
Ketamine	88.7%	4.3%	93.1%	2.0%	97.6%	1.7%	98.2%	1.6%
Benzoylecgonine	92.7%	4.5%	93.6%	0.9%	95.5%	2.7%	97.1%	3.1%
7-aminoclonazepam	86.4%	4.3%	95.2%	1.1%	94.1%	2.4%	95.5%	0.7%
7-aminoflunitrazepam	93.7%	3.0%	99.6%	2.1%	100.0%	1.8%	101.7%	1.2%
Zolpidem	89.3%	3.6%	92.5%	1.5%	97.1%	1.7%	97.5%	2.1%
$\alpha$ -Hydroxytriazolam	92.3%	6.6%	105.8%	3.0%	86.2%	2.4%	98.6%	2.6%
Flunitrazepam	77.9%	4.2%	79.2%	1.0%	83.2%	2.1%	84.7%	2.4%
Temazepam	98.5%	4.0%	99.9%	1.3%	96.6%	3.2%	99.4%	2.6%
Diazepam	98.6%	3.6%	100.8%	0.3%	104.0%	3.0%	102.8%	1.2%

Appendix 3. Day 3 intra-day (N = 4) accuracies and RSD comparisons of Otto SPEcialist vs. Hamilton STAR at 50 ng/mL and 1000 ng/mL.

## Featured Products

ACQUITY UPLC I-Class PLUS System <<https://www.waters.com/134613317>>

Xevo TQ-S micro Triple Quadrupole Mass Spectrometry <<https://www.waters.com/134798856>>

Otto SPEcialist Positive Pressure Manifold <<https://www.waters.com/waters/nav.htm?cid=135073532>>

MassLynx MS Software <<https://www.waters.com/513662>>

TargetLynx <<https://www.waters.com/513791>>

720007067, November 2020



