

Nota de aplicación

Unparalleled Multi-Factor Authentication Mass Spectrometry of Complex Natural Products Utilizing UPLC and Ion Mobility

Michael McCullagh, Russell J. Mortishire-Smith, Jeff Goshawk

Waters Corporation



Abstract

The application of a small negative ion natural products library that comprises 299 analytes is presented and is used to illustrate multi-factor authentication specificity of CCS libraries and their further extension to be used to screen for natural products. The use of LC-MS based methods to profile medicinal plants/herbal remedies and complex samples continues to increase. This approach has become more pivotal in phytochemical makeup profiling but remains a challenge due to sample complexity. Green tea extract has been screened and analyzed. Although the phytochemical makeup of green tea has been extensively profiled by numerous research groups, we report both previously identified and unidentified flavonoid isomers, and provide an illustration of unique $^{TW}CCSN_2$ specific identification profiling.

Benefits

- Unique multi-factor authentication mass spectrometry is achieved through combined specificity of UPLC-IM-MS and Waters UNIFI scientific databases
- Natural products analysis can be achieved routinely with a negative ion multi-metric natural products library that utilizes enhanced specificity connectivity produced from cumulative metrics including retention time, collision cross section, precursor ion mobility, and precursor/product ion accurate mass measurements
- UPLC-IMS enhances peak capacity which reduces sample complexity and facilitates deconvolution and identification of isomeric species

Introduction

The application of LC-MS-based methods to profile flavonoid markers in natural products has significantly increased in recent years. The importance of such an analytical approach has become more pivotal, both in species profiling and in consumer product authentication due to the challenges associated with increased sample complexity.¹ To date, over 4,000 flavonoids have been identified, possessing diverse pharmacological and biological properties.² Sample clean-up alone, in the form of solid-phase extraction (SPE), does not alleviate such complexity through extraction selectivity, resulting in sample extracts with non-discriminative elution of structurally related compounds.

Complex sample analysis is a significant challenge, where major/minor component coelution can occur due to insufficient chromatographic peak capacity and/or selectivity. Additionally, subtle changes in chromatographic separation, resulting from sample matrix, column loading, and chromatographic conditions selectivity can result in coelution of isomers and target analytes. Full spectra acquisition qualitative profiling using high resolution ToF-MS (time-of-flight Mass Spectrometry) enables large numbers of compounds to be detected in a single acquisition in conjunction with the ability to perform retrospective data review. Typically, ToF-MS accurate mass specificity is used in combination with time tolerances, isotopic matching, fragment ions/ratios, and response thresholds to screen for target compounds. Despite the selectivity and specificity advantages of high-resolution accurate mass spectrometry including MS/MS, it still can be challenging to determine the identity of analytes. This is especially the case when isomers/structurally related compounds produce the same isomeric product ions, and particularly so with large numbers of co-extracted matrix components.

Waters first developed and commercialized the SYNAPT ion mobility mass spectrometry (IM-MS) platform in 2006, enabling the development and use of mass spectrometry libraries to evolve. Incorporation of IM collision cross section (CCS) values enables identification that is based upon the cumulative metrics of UPLC-IM-MS (ultra-performance liquid chromatography ion mobility mass spectrometry). The IM-based measurement/gas phase separation of compounds is based on size, shape, and charge differentiation prior to the mass analyses.^{3,4} It provides an added dimension of separation, delivering increased system peak capacity and $^{TW}CCSN_2$ (travelling wave CCS using nitrogen buffer gas) to be used as an additional analyte identification metr

The analytical time scales are UPLC (seconds), ion mobility spectrometry (IMS) (milliseconds (~10 ms)), and time-offlight MS (microseconds). The speed of travelling wave ion mobility separation is compatible with the requirement of high throughput analysis of complex mixtures such as natural products. At acquisition rates of one spectra/second more than 90 analyte data points are readily generated, facilitating flexibility in the complexity of IM experimental design without loss of data integrity. IM small molecule CCS searchable databases have been created across multiple areas of research including natural product isomers (glycosidic cationomers, isomeric disaccharides), natural product screening/metabolism, veterinary drugs, metabolomics, lipids, mycotoxins, steroids, steviol glycosides, and charged isomers.⁵⁻²⁰

A strategy to facilitate the efficient and robust generation of mass spectrometry libraries that incorporate precursor/ product ions, adduct ions, retention times, and CCS values has been developed. Briefly, the non-targeted library building strategy utilizes analytical standards that are screened in triplicate, using both positive and negative ion electrospray ionization. Average CCS values (including adducts) and product ions are extracted from UNIFI ion mobility- processed data to produce analyte-specific MS library information.²¹

The application of a small negative ion natural products library that comprises 299 analytes is presented and is used to illustrate multi-factor authentication specificity of CCS libraries and their further extension to be used to screen for natural products. The use of LC-MS based methods to profile medicinal plants/herbal remedies and complex samples continues to increase. This approach has become more pivotal in phytochemical makeup profiling but remains a challenge due to sample complexity. Green tea extract has been screened and analyzed. Although the phytochemical makeup of green tea has been extensively profiled by numerous research groups, we report both previously identified and unidentified flavonoid isomers, and provide an illustration of unique ^{TW}CCSN₂ specific identification profiling.^{23,24}

Experimental

Sample description

Green tea extract (p/n: 186006962).

33 mg was dissolved in 2 mL of methanol/water 1/3 solution and diluted further, to a working concentration of 8.25 mg/mL for analysis.

Method conditions

LC conditions

| | |
|------------|--|
| LC system: | ACQUITY UPLC I-Class PLUS |
| Detection: | Ion mobility mass spectrometry |
| Vials: | LC-MS Certified Clear Glass 12 × 32 mm Screw Neck Total Recovery Vial, with Cap and Pre-slit PTFE/Silicone Septa, 1 mL volume (p/n: 600000671CV) |
| Column: | ACQUITY UPLC BEH C ₁₈ , 1.7 μm, 100 mm × 2.1 |

| | |
|-------------------|--|
| | mm, (p/n: 186002346) |
| Column temp.: | 45 °C |
| Sample temp.: | 10 °C |
| Injection volume: | 10 µL |
| Flow rate: | 0.75 mL/min |
| Mobile phase A: | 0.1% formic acid in water |
| Mobile phase B: | 0.1% formic acid in acetonitrile |
| Gradient: | 0–1 min. isocratic at (98:2.0 (A:B)); 5 min. (95:5); 10 min (80:20); 13 min (70:30); 15 min (20:80); 15.1 min (98:2.0) and 17 min (98:2.0) |

MS conditions

| | |
|--------------------|--------------------|
| MS system: | SYNAPT G2-Si QTof |
| Ionization mode: | ESI |
| Capillary voltage: | 2.2 kV |
| Cone voltage: | 30 V |
| Desolvation temp.: | 600 °C |
| Source temp.: | 150 °C |
| Acquisition range: | 50–1200 <i>m/z</i> |
| Acquisition rate: | 10 spectra s |

| | |
|-------------------|---|
| Lockmass: | Leucine enkephalin ($C_{28}H_{37}N_5O_7$ (m/z 556.2766 +ve/ m/z 554.2620 -ve)) |
| Collision energy: | HDMS ^E low collision energy 4 eV and high collision energy ramp (30 to 75 eV) |
| MS resolution: | 20,000 resolution full width half maximum (FWHM) at 556 m/z |
| IM resolution: | $\approx 40 \Omega/\Delta\Omega$ (FWHM) |
| IMS parameters: | default IMS screening parameters include T-Wave Velocity Ramp = Start: 1000 m/s End: 300 m/s, T-Wave Pulse Height = 40 V and a gas flow of helium 180 mL and nitrogen 90 mL (buffer gas) for the respective gas cells was used, giving an IM cell pressure of ~ 3.2 mBar |
| Calibration: | IMS/ToF Calibration Kit (p/n: 186008113) |

Data management

| | |
|--------------------------|--|
| Chromatography software: | MassLynx v4.1 SCN 916/924 |
| MS software: | MassLynx v4.1 SCN 916/924 |
| Informatics: | MassLynx data post processed using UNIFI v1.92 |

Results and Discussion

A negative ion mode mass spectrometry library incorporating accurate mass precursor and product ions retention with times has been developed. CCS values have been generated for precursor ion and adducts.

Green tea extract has been screened to assess the robustness of the library produced. The UPLC-MS BPI chromatogram obtained, and the corresponding orthogonal separation presented in Figure 1, have shown where it is evident that chromatographic coeluting analytes are resolved using ion mobility (separation from shape, charge, and mass). In negative ion mode ESI, the data reveal a higher degree of complexity than is observed using positive ion mode. Due to the acidic nature of the flavonoids and glycosides, greater ionisation efficiency is observed (See Waters Corporation application note 720006650EN for more on the positive ion library).

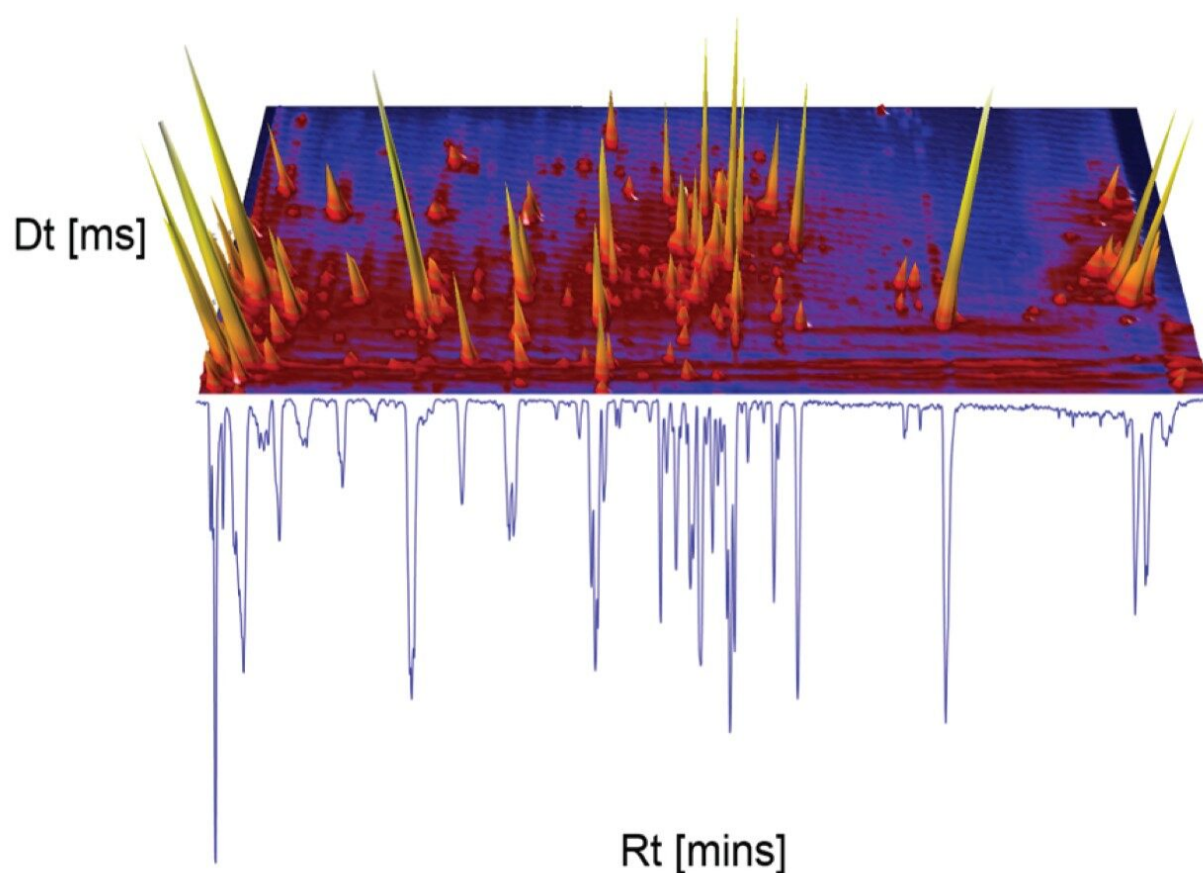


Figure 1. Negative mode base peak ion chromatogram (BPI) and corresponding ion mobility separation (drift time [ms]) on the y-axis, illustrating increased peak capacity and resolution of chromatographically coeluting analytes detected in green tea extract.

The reversed phase gradient used to generate the retention times of the natural products library constituents was used to generate chromatographic separation of the green tea extract constituents. The component summary for the identified analytes using negative electrospray ionisation is shown in Figure 2. Analytes in

the following classification groups were identified; amino acid [1], 7-C glycosylated flavones [15], flavanols [12], flavan-3-ols (catechins) [2,4], chlorogenic acids [3], and flavonoids [6-8, 9-17], and flavones [17]. The natural products library generated can be readily extended through further data interrogation and identification of analytes, in natural product extracts. ¹³C₁₃ specificity enables mass spectrometry libraries to be extended for both knowns and known unknowns.¹⁶

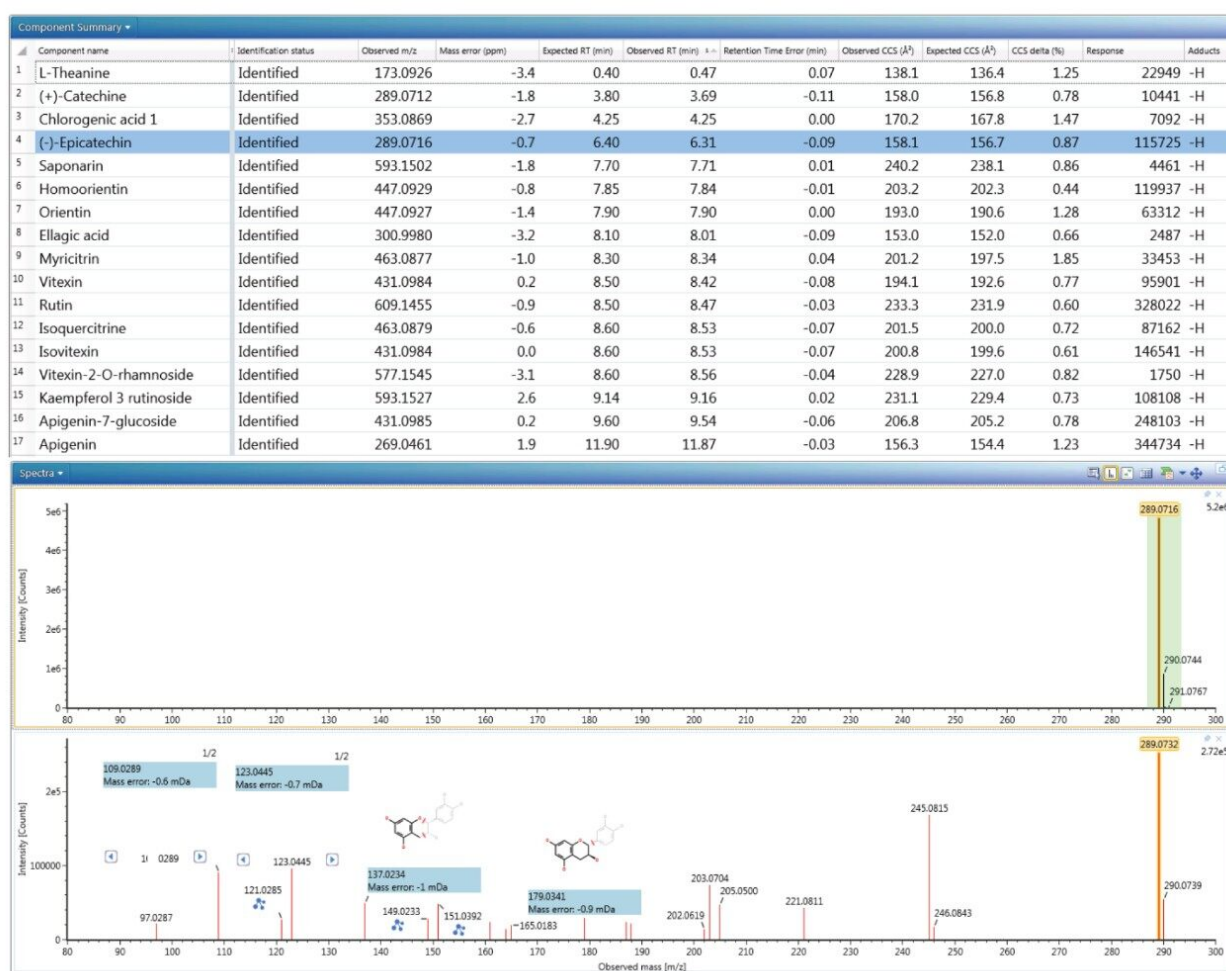


Figure 2. Component summary for analytes detected and identified in green tea extract using a negative ion natural products multi-metric mass spectrometry library (upper pane) and epicatechin precursor and retention/drift time aligned ion mobility precursor/product ion spectra (lower pane). Epicatechin mass measurement error 1.2 ppm, expected epicatechin library product ions identified <1.0 mDa and CCS delta - 0.5%.

The results shown in Figure 2 illustrate a mass accuracy of the order of 3 ppm and CCS delta of 1%.

Moreover, a CCS metric provides an additional identification point for analytes of low abundance where there

is insufficient ion intensity for product ion formation. However, the acquisition process is such that precursor and product ions can be generated for all analytes in one single acquisition. More importantly, the product ions generated are highly specific because they are both retention time and drift time aligned, differentiating them from mass spectrometry techniques that produce retention only time-aligned fragment ions. The ion mobility product ion spectrum of epicatechin detected in green tea is presented in the lower pane of Figure 2. Excellent mass accuracy of the product ions was observed (within 1 mDa) when compared to the expected exact mass product ions of epicatechin in the natural products library. Epicatechin was identified by means of seven identification points in total, precursor ion, four product ions, retention time, and CCS (-0.5% delta).

As mentioned previously, to further illustrate the utility, robustness, and confidence that can be gained when using a natural products multi-metric mass spectrometry library, green tea extract was fortified with a series of known analytes (Tashinone IIA, aeginin, aeginin-7-glucoside, orientin, homoorientin, vitexin, isovitexin).

²² Although the fortified analytes contained Tashinone A, it was not detected as would be expected, since it ionizes in positive ion mode only. All other fortified analytes were detected and identified correctly, further illustrating the robustness of the natural product libraries generated following the developed library building strategy. The 6-C/8-C glycosides (homoorientin/orientin and isovitexin/vitexin) were detected prior to fortification as well, as can be seen in the component summary presented in Figure 2. They have previously been reported to be present in black tea, with just vitexin in green tea. However, using the generated natural products library, both pairs of 6-C/8-C glycosides have been uniquely identified.^{23,24}

When analyzed in negative ion mode, the relative difference characteristic in expected CCS values of the 6-C/8-C glycosides isomer is greater than in positive ion mode ($190.6 \text{ \AA}^2/202.3 \text{ \AA}^2$ and $192.6 \text{ \AA}^2/199.6 \text{ \AA}^2$). This occurrence illustrates that, although analytes may ionize in both ionization modes, differing IMS specificity can be observed and determined. Additionally, each of the isomers exhibited characteristic isomeric product ion spectra where distinctive fragment ion ratios further distinguish each respective isomer pair,²⁰ making the identification of these flavonoids in green tea compelling. Reproducibility in the approach discussed herein is shown in Figure 3, where repeat analysis of green tea extract was performed five months after the initial IM screening studies. The long-term robustness of a CCS metric has previously been shown for complex analyses including food commodities (sweeteners and pesticides), animal tissues (veterinary drugs), and natural products.^{12,16-17}

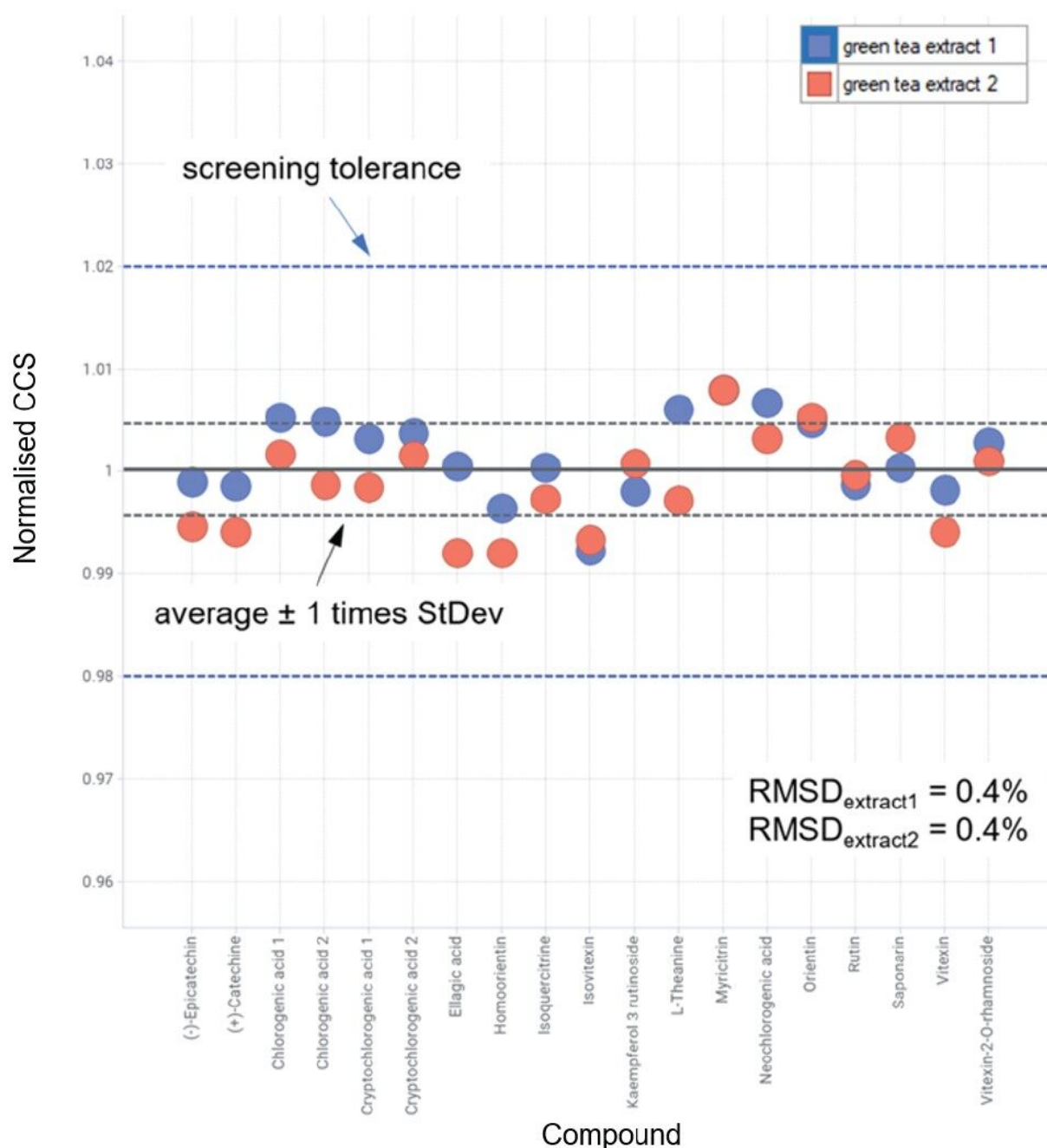


Figure 3. Illustration of repeatability of (normalized) CCS values for phytochemicals identified in green tea extract. The solid black line indicates that extract measurement 1 (blue) and extract measurement 2 (red) average CCS values are within 1% of library CCS value).

The combined cumulative reproducibility and specificity of a ^{TW}CCSN₂ metric adds newfound analytical confidence in complex sample analyses to achieve analyte identification of isomers, for example, which as

previously stated, can prove to be challenging. To illustrate the latter, in Figure 2, it can be observed that homoorientin is identified at 7.85 minutes and orientin at 7.90 minutes, just 0.05 minutes difference in observed retention time. However, the unique routine incorporation of CCS into the UNIFI mass spectrometry library has enabled the observed differences in CCS in positive and negative ion mode to be utilized. The correct identification assignment has been made routine using unique UNIFI functionality that exploits the highly specific cumulative metrics generated in both ionization modes. IM deconvolution of isomeric product ions produced from isomers eluting in proximity has been performed. Identification of such isomers is highly relevant in many areas of research including medicinal plant profiling where isomeric species can have different phytochemical activity, or in the case of food manufacture, can impact the taste profile of the final product.¹²

Using analytical standards, it was interesting to observe that for kaempferol 3 rutinoside, two IM- separated species were detected for one chromatographic peak ($R_t = 9.12$ mins), with determined $^{TW}CCSN_2$ values of 216.1 Å² and 229.9 Å². As shown in Figure 4, the two IM-separated species of kaempferol 3 rutinoside were identified in green tea extract with CCS values of 217.1 Å²/229.1 Å² and respective delta values of 0.5%/-0.4%. In Figure 4(II), it is also shown that in positive ion mode, two IM-separated species were observed for kaempferol 3 rutinoside. In addition, a potassiated and sodiated adduct were also identified, enabling four positive ion mode $^{TW}CCSN_2$ values to be determined for the same compound in total. Employing an approach to screen using positive and negative ion mode data, a $^{TW}CCSN_2$ fingerprint comprising six CCS values in total was obtained (see Table 1). In addition to retention time, two precursor ion accurate mass measurements and four IM product ion spectra were detected. As seen from the results shown in Figure 5, in negative ion mode, the charged isomer species of kaempferol 3 rutinoside also produces distinctive product ion spectra, which may result from the occurrence of two charge location sites or two conformations.

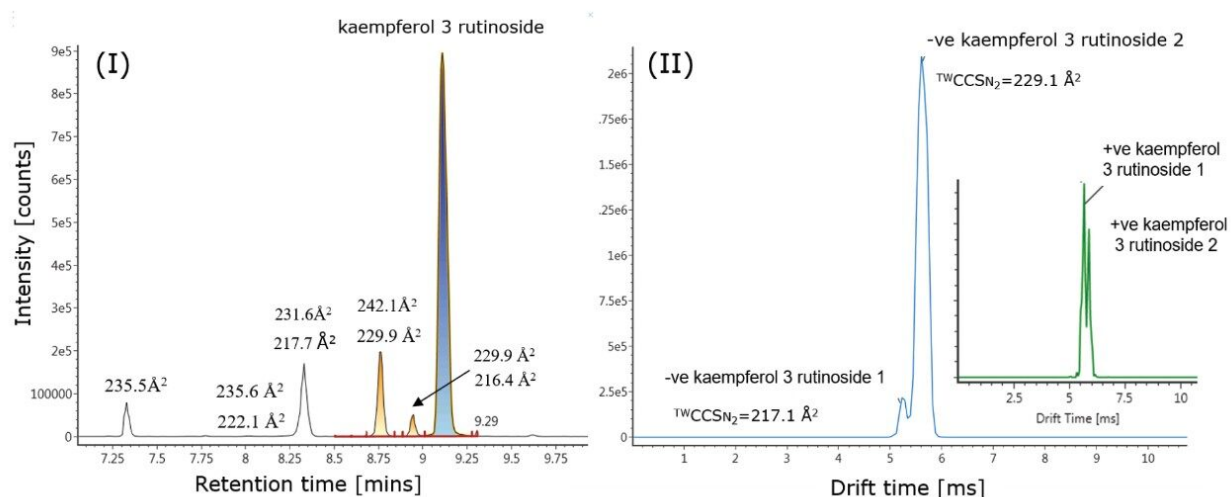


Figure 4. (I) Extracted exact mass chromatogram m/z 593.1523 (22 ppm tolerance), determined for the kaempferol 3 rutinoside (9.12 mins) and additional isomers detected in green tea extract with corresponding retention time and measured $^{TW}CCSN_2$ values. (II) IM separation of two charged $[M-H]^-$ isomer species of kaempferol 3 rutinoside (inset positive ion mode for m/z 595.1657, separation of two $[M+H]^+$ charged isomer species of kaempferol 3 rutinoside).

| Component name | Observed m/z | Mass error (ppm) | Observed RT (min) | Observed CCS (Å ²) | Expected CCS (Å ²) | CCS delta (%) | Adducts |
|-----------------------------|----------------|------------------|-------------------|--------------------------------|--------------------------------|---------------|---------|
| kaempferol 3 rutinoside (1) | 593.1523 | 1.9 | 9.12 | 217.6 | 216.1 | 0.7 | -H |
| kaempferol 3 rutinoside (2) | 593.1523 | 1.8 | 9.11 | 229.3 | 229.9 | -0.3 | -H |
| kaempferol 3 rutinoside (1) | 595.1662 | 0.8 | 9.14 | 230.2 | 230.3 | -0.1 | +H |
| kaempferol 3 rutinoside (2) | 595.1662 | 0.8 | 9.14 | 236.5 | 236.7 | -0.1 | +H |
| kaempferol 3 rutinoside K | 633.1219 | 0.4 | 9.14 | 245.3 | 245.2 | 0.05 | +K |
| kaempferol 3 rutinoside Na | 617.1479 | 0.3 | 9.14 | 244.6 | 244.0 | 0.3 | +Na |

Table 1. $^{TW}CCSN_2$ values determined for kaempferol 3 rutinoside using positive and negative IM CCS screening.

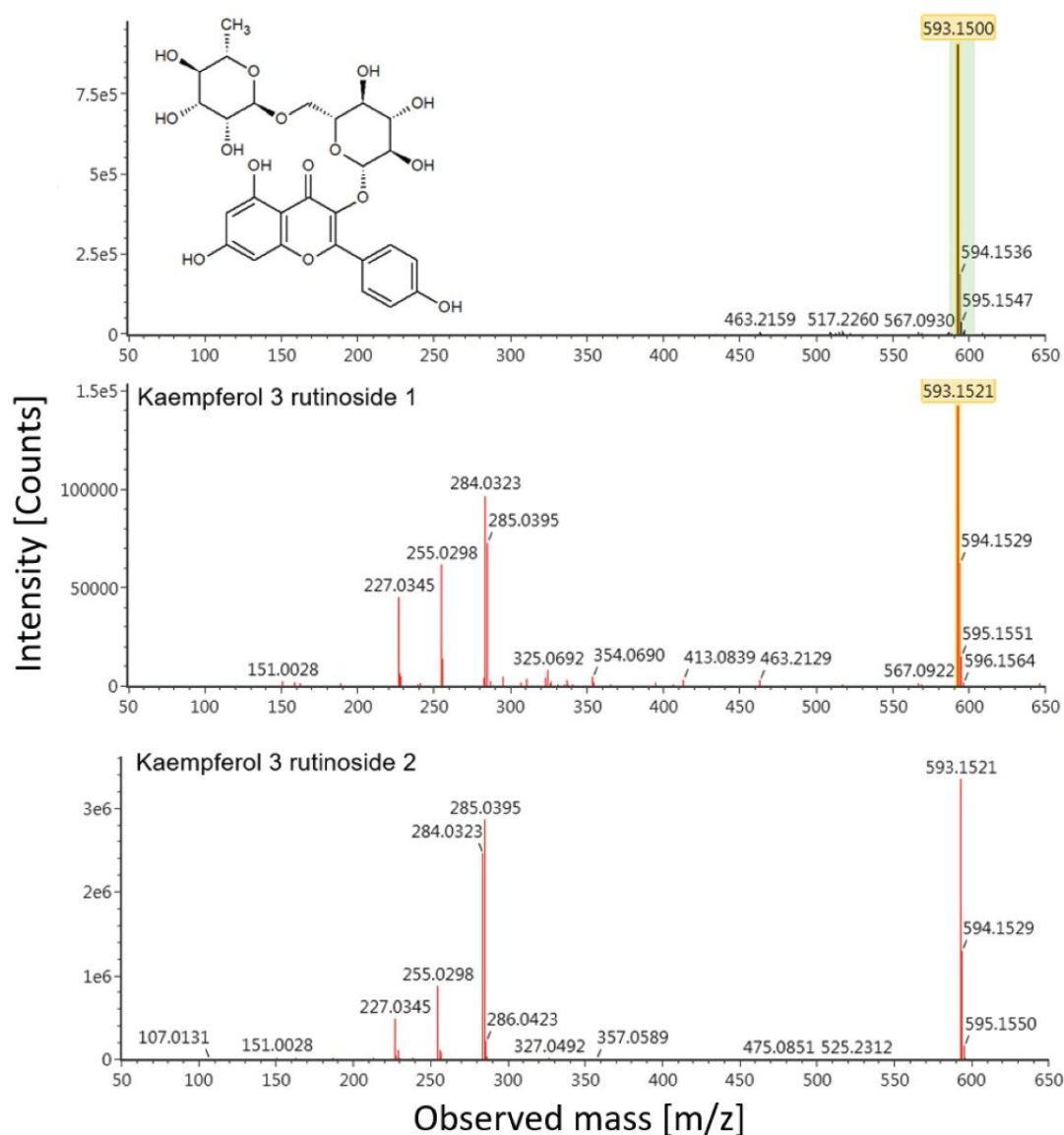


Figure 5. IM resolved $[M-H]^-$ precursor ion and distinctive product ion spectra of Kaempferol 3 rutinoside charged isomers.

Highly specific multi-factor authentication data can be generated using IM screening, in the case of rutin one, IM species is observed in negative ion mode and two in positive ion mode (Waters Corporation Application Note 720006650EN). The advantage of IM screening of complex samples is further illustrated in Figure 4 (I) and Table 2. From the extracted exact mass chromatogram obtained for kaempferol 3 rutinoside, series of additional isomeric species are observed. The corresponding obtained $^{TW}CCSN_2$ values enabled a known unknown $^{TW}CCSN_2$ profile to be generated. Along with kaempferol 3 rutinoside, five of the six

isomeric species exhibited two IM charged isomers. Accurate mass measurement alone would not allow such specificity to be discovered and utilized. This research further illustrates the unparalleled specificity that can be achieved using UPLC-IM-MS. In addition, IM provides enhanced peak capacity to resolve complex samples, facilitating the acquisition of the non-targeted retention/drift time aligned precursor/product ions of all analytes detected in a single acquisition.

| ^{TW} CCSN ₂ profile for known and unknown 593.1523 <i>m/z</i> isomers | | | |
|---|--------------------------------|----------|-------------------|
| Observed <i>m/z</i> | Observed CCS (Å ²) | Response | Observed RT (min) |
| 593.1516 | 235.5 | 408968 | 7.33 |
| 593.1507 | 235.6 | 9319 | 8.03 |
| 593.1507 | 222.1 | 710 | 8.03 |
| 593.1511 | 240.4 | 78541 | 8.24 |
| 593.1516 | 217.7 | 9228 | 8.33 |
| 593.1516 | 231.6 | 107530 | 8.33 |
| 593.1506 | 242.1 | 2709 | 8.76 |
| 593.1506 | 229.9 | 71982 | 8.76 |
| 593.1501 | 216.4 | 426 | 8.94 |

Table 2. ^{TW}CCSN₂ profile for known and unknown isomers (including charged isomers) detected at 593.1523 *m/z* in green tea extract.

The additional specificity afforded by IM enables flexibility in chromatographic gradients employed and the incorporation into UPLC-IM-MS libraries can potentially reduce the reliance on injecting expensive natural product standards to determine isomer retention times. Moreover, the specificity can aid speed of method development and data interrogation, thereby providing time and cost efficiency. Importantly, the enhanced peak capacity of UPLC-IM provides potential to reveal and gain greater understanding of known phytochemical activity produced by natural product extracts (nutraceuticals and traditional Chinese medicines).

Conclusion

- A unique, multi-metric negative ion natural products library incorporating retention time, accurate mass, retention time/drift time, aligned precursor ion, and IM product ions with ^{TW}CCSN₂ values has been

developed.

- Long-term robustness of the negative ion mode natural products library has been verified where analytes present in a complex natural product green tea extract have been reproducibly identified.
- IM provides enhanced peak capacity to deconvolute complex samples, facilitating the acquisition of the nontargeted retention/drift time aligned precursor/product ions of all analytes detected in a single acquisition.
- UPLC-IM-MS multifactor authentication specificity can aid speed of method development and data interrogation, with simultaneous increased flexibility/specificity to avoid false detections, improving time and cost efficiency.
- Unique CCS authentication, isomer/charged isomer profiles with distinctive charged isomer product ions profiles have been generated for known and known unknown analytes.
- The potential of combined positive/negative ion mode CCS fingerprints has been illustrated. A CCS fingerprint incorporating six CCS values has been generated for a single analyte, two precursor ion mass measurements, two adduct mass measurements, four product ion spectra, and retention time.
- Screening strategies incorporating positive and negative ion mode UPLC-IM-MS provide unparalleled multi-factor authentication specificity which cannot be matched by accurate mass measurement alone.
- UPLC-IM-MS multi-factor authentication can be applied to many small molecule application areas including food fraud, profiling of nutraceuticals, metabolite identification, and speciation studies.

References

1. Stobiecki, M. *Phytochemistry*. 2000, 54, 237–256.
2. Zucolotto, S.M.; Fagundes, C.; Reginatto F.H.; Ramos, F.A.; Castellanos, L.; Duque C.C.S.; Schenkel, E.P. *Phytochem. Anal.* 2012, 23, 232–239.
3. Pringle, S.D.; Giles, K.; Wildgoose, J.L.; Williams, J.P.; Slade, S.; Thalassinou, K.; Bateman, R.H.; Bowers, M.T.; Scrivens, J.H. An investigation of the mobility separation of some peptide and protein ions using a new hybrid quadrupole/travelling wave IMS/oa-ToF instrument. *International Journal of Mass Spectrometry*. 2007, 26, 1–12.
4. Giles, K.; Pringle, S.D.; Worthington, K.R.; Little, D.; Wildgoose, J.; Bateman, R.H. Applications of a

- travelling wave-based radiofrequency only stacked ring ion guide. *Rapid Commun. Mass Spectrom.* 2004, 18, 2401.
5. Chalet, C.; Hollebrands, B.; Janssen, P.; Augustijns, P.; Duchateau, G. Identification of phase-II metabolites of flavonoids by liquid chromatography–ion-mobility spectrometry–mass spectrometry. *Anal Bioanal Chem.* 2018, 410:471–482.
 6. Goscinny, S.; McCullagh, M.; Far, F.; De Pauw, E.; Eppe, G. Towards the use of ion mobility mass spectrometry derived collision cross section as a screening approach for unambiguous identification of targeted pesticides in food. *Rapid Commun. Mass Spectrom.* 2019;1–15.
 7. Paglia, G.; Williams, J.P.; Menikarachchi, L.; Thompson, J.W.; Tyldesley-Worster, R.; Halldórsson, S.D.; Rolfsson, O.; Moseley, A.; Grant, D.; Langridge, J. et al. Ion mobility derived collision cross sections to support metabolomics applications. *Anal. Chem.* 2014, 86, 3985–3993.
 8. Paglia, G.; Angel, P.; Williams, J.P.; Richardson, K.; Olivos, H.J.; Thompson, J.W.; Menikarachchi, L.; Lai, S.; Walsh, C.; Moseley, A. et al. Ion mobility-derived collision cross section as an additional measure for lipid fingerprinting and identification. *Anal. Chem.* 2015, 87, 1137–1144.
 9. Righettia, L.; Fenclovaa, M.; Dellaforab, L.; Hajslovaa, J.; Stranska-Zachariasovaa, M.; Dall'Asta, C. High resolution-ion mobility mass spectrometry as an additional powerful tool for structural characterization of mycotoxin metabolites. *Food Chemistry.* 2018, 245, 768–774.
 10. Righetti, L.; Bergmann, A.; Galaverna, G.; Rolfsson, O.; Paglia, G.; Dall'Asta, C. Ion mobility-derived collision cross section database: Application to mycotoxin analysis. *Anal. Chem. Acta.* 2018, Jul 19; 1014:50–57.
 11. Lipok, C.; Hippler, J.; Schmitz, O.J. A four dimensional separation method based on continuous heart-cutting gas chromatography with ion mobility and high resolution mass spectrometry. 2018, *J.Chromatogr A.* 1536, 50–57.
 12. McCullagh, M.; Douce, D.; Van Hoeck, E.; Goscinny, S. Exploring the Complexity of Steviol Glycosides Analysis Using Ion Mobility Mass Spectrometry. *Anal. Chem.* 2018, 90, 4585–4595.
 13. Bauer, A.; Kuballa, J.; Rohn, S.; Jantzen, E.; Luetjohann, J. Evaluation and validation of an ion mobility quadrupole time-of-flight mass spectrometry pesticide screening approach. *Journal of Separation Science* , 2018, 41:2178–2187.
 14. Hernández-Mesa, M.; Le Bizec, P.; Monteau, F.; García-Campaña, A.M.; Dervilly-Pinel, G. Collision cross

section (CCS) database: an additional measure to characterize steroids. *Anal. Chem.* 2018, 90(7):4616–4625.

15. Gallagher, R.; Pattison, C.; Pickup, K.; Chipperfield, J.; McCullagh, M.; Douce, D. Enhanced characterisation of metabolites using microflow UPLC-MS and collision cross section measurements. Proceedings of the 62nd ASMS Conference on Mass Spectrometry and Allied Topics, Baltimore, MD, June, 2014.
16. McCullagh, M.; Pereira, C. A. M.; Yariwake, J. H. Use of ion mobility mass spectrometry to enhance cumulative analytical specificity and separation to profile 6-C/8-Cglycosylflavone critical isomer pairs and known-unknowns in medicinal plants. *Phytochemical Analysis*. 2019;1–13.
17. McCullagh, M.; Giles, K.; Richardson, K.; Stead, S.; Palmer, M. Investigations into the performance of travelling wave enabled conventional and cyclic ion mobility systems to characterise protomers of fluoroquinolone antibiotic residues. *Rapid Commun. Mass Spectrom.* 2019;1–11.
18. Fasciotti, M.; Sanvido, G.B.; Santos, V.G.; Lalli, P.M.; McCullagh, M.; De Sá, G.F.; Daroda, R.J.; Petera, M.G.; Eberlin, M.N. Separation of isomeric disaccharides by traveling wave ion mobility mass spectrometry using CO₂ as drift gas. *J. Mass Spectrom.* 2012, 47, 1643–1647.
19. Bataglion, G.A.; Souza, G.H.; Heerdt, G.; Morgon, N.H.; Dutra, J.D.; Freire, R.O.; Eberlin, M.N.; Tata, A. Separation of glycosidic cationomers by TWIM-MS using CO₂ as a drift gas. *J. Mass Spectrom.* 2015, 50, (2), 336–43.
20. Ahonen, L.; Fasciotti, M.; Gennäsa, G.B.; Kotiahoa, T.; Darodac, R.J.; Eberlin, M.N.; Kostianena, R. Separation of steroid isomers by ion mobility mass spectrometry. *J. Chromatogr. A*. 2013, 1310 133–137.
21. Goshawk, J.; Barknowitz, G.; McCullagh, M. The Development Of A Natural Products Library Using Ion-Mobility Enabled Mass Spectrometry. 67th ASMS Conference on Mass Spectrometry and Allied Topics, Atlanta, GA, June 2–6, 2019.
22. McCullagh, M.; Mortishire-Smith, R.; Goshawk, J. Enhancing analysis specificity and deconvolution of natural products using a positive mode ion mobility mass spectrometry library. Waters Application Note 720006650, 2019.
23. Engelhardt, U.H.; Finger, A.; Kuhr, S. Determination of flavone C-glycosides in tea. *Z Lebensm Unters Forsch.* 1993 Sep;197(3):239–44.
24. Sakamoto, Y. Isolation and Structures of Flavones Occurring in Green Tea Infusion. *Agr. Biol. Chem.*, 1967, Vol. 31, No. 9, p. 10291034.

Featured Products

SYNAPT G2-Si Mass Spectrometry <<https://www.waters.com/134740653>>

ACQUITY UPLC I-Class PLUS System <<https://www.waters.com/134613317>>

MassLynx MS Software <<https://www.waters.com/513662>>

UNIFI Scientific Information System <<https://www.waters.com/134801648>>

Natural Products Application Solution with UNIFI <<https://www.waters.com/134777097>>

720006791, March 2020