

Optimizing LC-MS Separations of mAbs using a BioResolve SCX mAb Column and IonHance CX-MS pH Concentrates

Andrew Schmudlach, Samantha Ippoliti, Qi Wang, Matthew A. Lauber

Waters Corporation

Abstract

This application note explains important considerations made during the design and development of this mobile phase as well as some strategies that can be employed to optimize separations, whether it be using alternative mobile phase dilutions or the fine tuning of gradients.

Benefits

A novel salt-mediated pH-gradient, ion-exchange (IEX) method is demonstrated that employs volatile salts to allow for direct coupling to a mass spectrometer and the straightforward and simple identification of chromatographic peaks.

Introduction

Microheterogeneities are inherent features of monoclonal antibodies (mAbs) due to their susceptibility to both chemical and enzymatic modifications. Many of these modifications cause changes in surface charge, including

deamidation, glycation, C-terminal lysine truncation, and some types of oxidation.¹ Because these heterogeneities can impact efficacy and safety, it can become very important to have cutting-edge approaches for their detection. These so-called charge variant analyses can be performed using a variety of different techniques, but it seems that more and more promising methods are being developed using ion exchange chromatography (IEX).

Previously, IEX was seen as incompatible with mass spectrometry due to the use of high levels of non-volatile salts.² To achieve peak identification, this incompatibility has required long workarounds such as fraction collection³ or cumbersome 2D-LC setups.^{4,5} Recent advances using relatively low concentrations of volatile salts have, however, allowed the hyphenation of IEX to MS and the direct identification of charge variants.^{2,6-8} Most notably, ammonium salts are now being used for IEX-MS mobile phases, and with them, it has become possible to achieve MS-compatibility with both salt and pH gradients.

Along these lines, we have developed a flexible ammonium acetate based, salt-mediated pH gradient technique suitable for the charge variant analysis of a wide range of mAbs. The developed mobile phase is based on the IonHance CX-MS pH Concentrates that yield solutions for performing binary pH gradients and collecting high sensitivity mass spectra. In the following work, we will explain important considerations made during the design and development of this mobile phase as well as some strategies that can be employed to optimize separations, whether it be using alternative mobile phase dilutions or the fine tuning of gradients.

Experimental

Sample preparation

IdeS digestion of mAb samples

100 µg of NIST mAb (NIST RM 8671), trastuzumab or adalimumab was digested by incubating at 37 °C for 30 min with 20 units of FabRICATOR enzyme (Genovis, A0-FR1-008) in either 105 mM ammonium acetate pH 6.2 or phosphate buffer saline. The final concentration of digested antibodies was 1.0 mg/mL. More information on considerations for using ammonium acetate versus phosphate buffered saline can be found in the application note “Practical Considerations for Optimizing MS Quality during IEX-MS” (p/n: 720006675EN).

Conditions for SEC-MS and Figure 2

LC system:	ACQUITY UPLC I-Class
Detectors:	Xevo G2-S QToF
LC column:	ACQUITY UPLC Protein BEH SEC 200 Å, 1.7 µm, 4.6 × 150 mm (p/n: 186005225)
Column temp.:	30 °C
Flow rate:	0.100 mL/min
Injection:	5 µL (10 mg/mL NIST mAb – RM 8671)
Mobile phase:	50 mM ammonium acetate pH 5.0, 7.0, and 9.0 50 mM, 150 mM, and 300 mM ammonium acetate pH 7.0
Capillary voltage:	3.0 kV
Sampling cone voltage:	150 V
Source temp.:	135 °C
Desolvation temp.:	500 °C
Cone gas flow:	300 L/h
Desolvation gas flow:	800 L/h

Conditions for Figures 1, 3–6

LC system:	ACQUITY UPLC I-Class PLUS
Detectors:	ACQUITY TUV ACQUITY RDa MS GE Healthcare Monitor pH/C-900
LC column:	BioResolve SCX mAb, 3 μ m, 2.1 \times 50 mm (p/n: 186009054)
Column temp.:	30 $^{\circ}$ C
Sample vial:	LCMS Certified Glass Screw Neck Total Recovery Vials (p/n: 600000671cv)
Mobile phase A:	IonHance CX-MS pH Concentrate Buffer A pH 5.0 (p/n: 186009280)
Figures 2 and 4A:	50 mM ammonium acetate pH 5.0
Figures 3B, 4, 5, and 6:	10 mM ammonium acetate pH 5.0
Mobile phase B:	IonHance CX-MS pH Concentrate Buffer B, pH 8.5 (p/n: 186009281)
Figures 2 and 4A:	160 mM ammonium acetate pH 8.5

Figures 3B, 4B, 5, and 6: 75 mM ammonium acetate pH 8.4

Figure 4A: 53 mM ammonium acetate pH 8.4

Gradient table (Figures 1, 3, 4A, 4B, 5A): (Figure 2: 0.200 mL/min flow rate)

Time (min)	Flow rate (mL/min)	%A	%B	Curve
Initial	0.100	98.0	2.0	–
1.00	0.100	98.0	2.0	6
21.00	0.100	2.0	98.0	6
22.00	0.100	2.0	98.0	6
23.00	0.100	98.0	2.0	6
30.00	0.100	98.0	2.0	6

Gradient (Figure 5B)

Time (min)	Flow rate (mL/min)	%A	%B	Curve
Initial	0.100	70.0	30.0	-
1.00	0.100	70.0	30.0	6
21.00	0.100	2.0	98.0	6
22.00	0.100	2.0	98.0	6
23.00	0.100	70.0	30.0	6
30.00	0.100	70.0	30.0	6

Gradient (Figure 6)

Time (min)	Flow rate (mL/min)	%A	%B	Curve
Initial	0.100	50.0	50.0	-
1.00	0.100	50.0	50.0	6
21.00	0.100	2.0	98.0	6
22.00	0.100	2.0	98.0	6
23.00	0.100	50.0	50.0	6
30.00	0.100	50.0	50.0	6

**It is recommended to use a low dispersion ACQUITY UPLC I-Class instrument for performing this type of gradient with a 0.1 mL/min flow rate. If another type of instrument is to be used, it might be of benefit to gradient fidelity to scale the method with an increase in flow rate to at least 0.15 mL/min.*

ACQUITY RDa Detector settings

Mass range:	m/z 400–7,000
Mode:	ESI ⁺
Cone voltage:	150 V
Desolvation temp.:	350 °C
Capillary voltage:	1.5 kV
Lock mass:	Leu-enkephalin at 50 fmol/μL in 50/50 water/acetonitrile with 0.1% formic acid

Results and Discussion

IonHance CX-MS pH Concentrates

Recent advances in directly coupling ion exchange (IEX) to mass spectrometers (MS) have successfully allowed for the straightforward and simplified analysis of charge variants. This hyphenation has considerably reduced prep time for making MS-based identifications and is opening up opportunities for a new approach to monitoring the critical attributes of a drug product. The IonHance CX-MS pH Concentrates were created to address the challenges in adopting IEX-MS, namely the laborious nature of creating appropriate mobile phases. The IonHance CX-MS pH Concentrates are pH-stable, ammonium acetate solutions that are prepared from and packaged in materials with low ppb, trace metal certified materials. To ensure a long shelf life, the concentrates are also manufactured with 20% acetonitrile (ACN), which ensures they remain bacteriostatic until dilution. The suggested starting point for using these concentrates is a 10x dilution, which yields a 50 mM ammonium acetate pH 5.0 2% acetonitrile (ACN) solution and a 160 mM ammonium acetate pH 8.5 2% ACN solution for use as mobile phase A and B, respectively. With these mobile phases, it is possible to achieve a linear pH gradient during the elution window of mAbs (Figure 1). This is despite the pKas of acetate and ammonium being 4.75 and 9.25, because sufficient ionic strengths are employed throughout a run to lend buffering capacity and pH control (e.g., 10 to 200 mM concentrations).^{9,10} The following sections provide more information on how this composition came to be formulated as well as some examples on how to optimize a separation beyond the use of the standard 10x diluted concentrates.

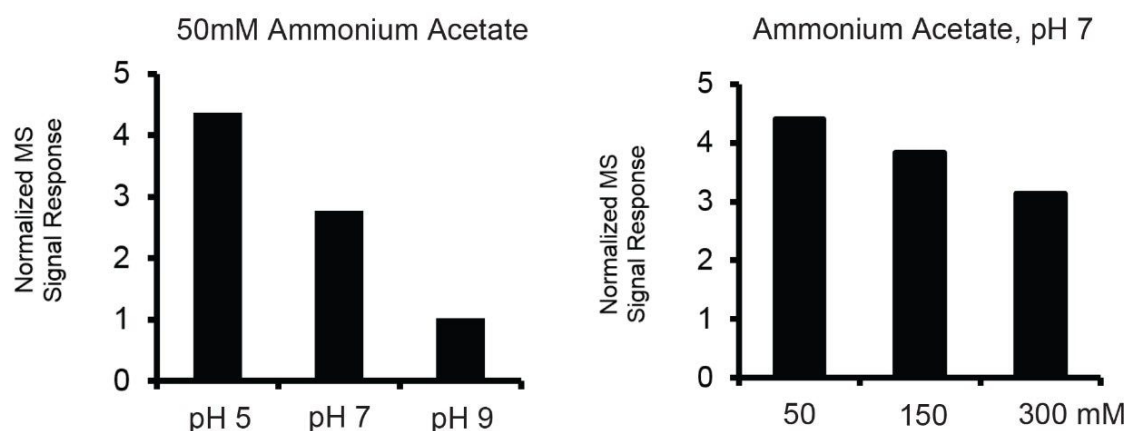


Figure 1. Ionization efficiency of intact NIST mAb as determined by using ammonium acetate solutions with either (A) fixed concentration or (B) fixed pH. Increasing pH decreased protein ionization whereas increasing ionic strength had less overall effect.

Developing an IEX-MS Mobile Phase

Mobile phases used for IEX-MS have included ammonium formate,^{7,11} ammonium acetate,^{7, 11,12} and ammonium bicarbonate.^{6,12,13} There is reason to give some thought to selecting the ammonium counter ion. Most particularly, analysts should re-consider the use of ammonium bicarbonate (or even carbonate), because it can cause proteins to denature during electrospray, the formation of CO₂ adducts, and supercharging.^{10,14,15} While supercharging may be desirable in some circumstances, it can also complicate data analysis by creating MS signal with little to no correspondence to UV or fluorescence based chromatograms. The *in situ* formation of carbon dioxide can also cause problems by introducing +44 Da gas phase adducts. Moreover, bicarbonate solutions exhibit poor stability; bicarbonate solutions off-gas CO₂ and shift in pH such that it is unreliable to keep them for any type of long-term storage. All of this culminates in more charge states, additional adducts, loss of native conformations, and poor mobile phase stability. Meanwhile, mobile phases comprised of ammonium formate suffer from disparate pKa values and comparatively low buffering capacity across commonly explored pH values. For these reasons, ammonium acetate is seen to be the best mobile phase component for native LC-MS experiments.

Salt-Mediated pH Gradients

Differing methodologies have been used for IEX-MS, including pH gradients,¹¹ salt gradients,⁷ and salt-mediated pH gradients.^{12,16} All have been shown to be compatible with native protein analysis; however, differences do exist between the methods. Salt gradients have generally been found to give higher peak capacities and greater resolving power than pH gradients^{1,17} but they pose a heavy burden on MS instrumentation. Moreover, impurities in high ionic strength buffers can yield unwanted metal adducts and diminish MS quality. A pH gradient, in contrast, affords elution by means of changing mobile phase pH.¹⁸ A protein's net charge is modified during the gradient until the protein comes to elute from the column.¹⁸ To its advantage, a pH gradient method does not require high ionic strength and can generally be used more broadly across different sample types. In comparison, a salt-mediated pH gradient entails the use of a compressed pH range along with a concurrent ionic strength gradient. With such an approach, it might be necessary to fine tune gradients and buffer concentrations, but the technique possesses the best capability for antibody charge heterogeneity.^{12,19,20}

With these potential elution mechanisms in mind, we aimed to separately learn about ionization efficiency as a function of pH and ionic strength. To this point, Figure 2 shows the results of performing SEC-MS on NIST mAb with different ammonium acetate solutions, both varying in pH and concentration. In these data, a more dramatic decrease in ionization efficiency was observed when pH was changed from 5 to 7 to 9 versus when concentration was changed from 50 to 150 to 300 mM. Accordingly, the IonHance CX-MS mobile phases were designed around these data to provide an efficient salt-mediated pH gradient.

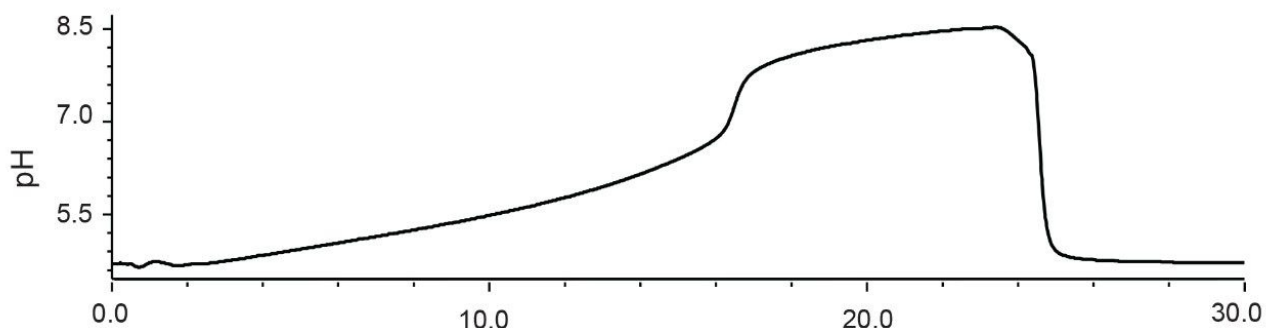


Figure 2. pH trace generated from a gradient going from 2 to 98% B over 21 min, returning to 2% B using 10x diluted IonHance CX-MS pH Concentrates (A: 50 mM ammonium acetate, pH 5.0/B: 160 mM ammonium acetate, pH 8.5.)

Robustness of Methods with BioResolve SCX mAb and IonHance CX-MS pH Concentrates

The IonHance CX-MS Concentrates have been formulated for a 10x dilution of mobile phase concentrates to deliver 50 mM pH 5.0 and 160 mM pH 8.5 ammonium acetate solutions which are capable of producing very robust separations, especially when combined with BioResolve SCX mAb Column technology. This robustness was evaluated through repeated separations of IdeS digested, non-reduced trastuzumab as performed with different batches of concentrates as well as different batches of column stationary phase. Chromatograms collected from this experiment are shown in Figure 3. As can be observed, the retention times of components in this separation were highly reproducible despite the use of different consumable batches. In fact, all components in the separation were found to possess incredible reproducibility, exhibiting retention times with RSD values <2%. Equally noteworthy is the resolution observed between the acidic variant and the main peak of the F(ab')₂ subunit, which also showed an RSD <2%. In sum, a simple 10x dilution of the IonHance CX-MS pH Concentrates is a desirable and robust starting point for testing new analytes and establishing IEX-MS capabilities.

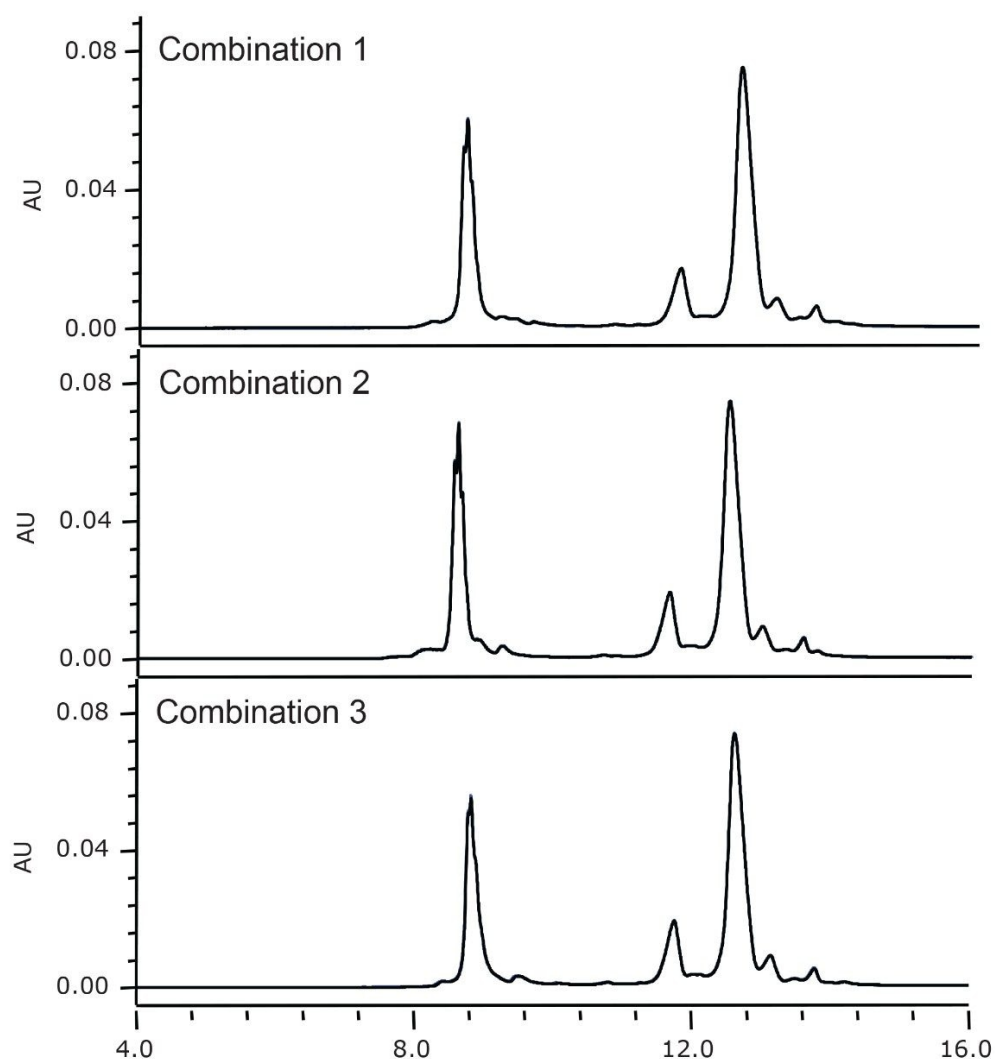


Figure 3. UV₂₈₀ chromatograms of IdeS digested, non-reduced trastuzumab obtained with different batches of BioResolve SCX mAb, 2.1 × 50 mm Columns and different batches of IonHance CX-MS pH Concentrates (10x dilution). Each combination is portrayed by the overlay of technical duplicates

Alternative Dilution Factors

That said, it is unlikely for the standard dilution ratios to produce perfectly optimized separations for all analytes. Challenging samples might require tailored methods. For some samples, the ionic strength of the 10x diluted

concentrates might cause undesirable analyte elution. Further dilution of the concentrates beyond 10x may improve such separations by enhancing the pH gradient mechanism and reducing ionic strength. Dilution of the CX-MS concentrates can alter pH, but the overall change is minor. For example, buffer A diluted to 10 mM ammonium acetate (50x dilution) remains at pH 5.0 whereas buffer B diluted to 75 mM ammonium acetate (21x dilution) has been measured to be pH 8.4. While there is potential to optimize separations with numerous different conditions, one should avoid conflicting separation conditions, specifically an ionic strength that decreases across a run. Dilution of both buffer solutions beyond the 10x dilution of the concentrates leads to delayed elution, provided the same gradient table is used, as evidenced in Figure 4 and two example separations of IdeS digested, non-reduced NIST mAb. Both the $(Fc/2)_2$ and $F(ab')_2$ subunit samples are shifted to longer retention times, yet the separation affords improved charge variant resolution.

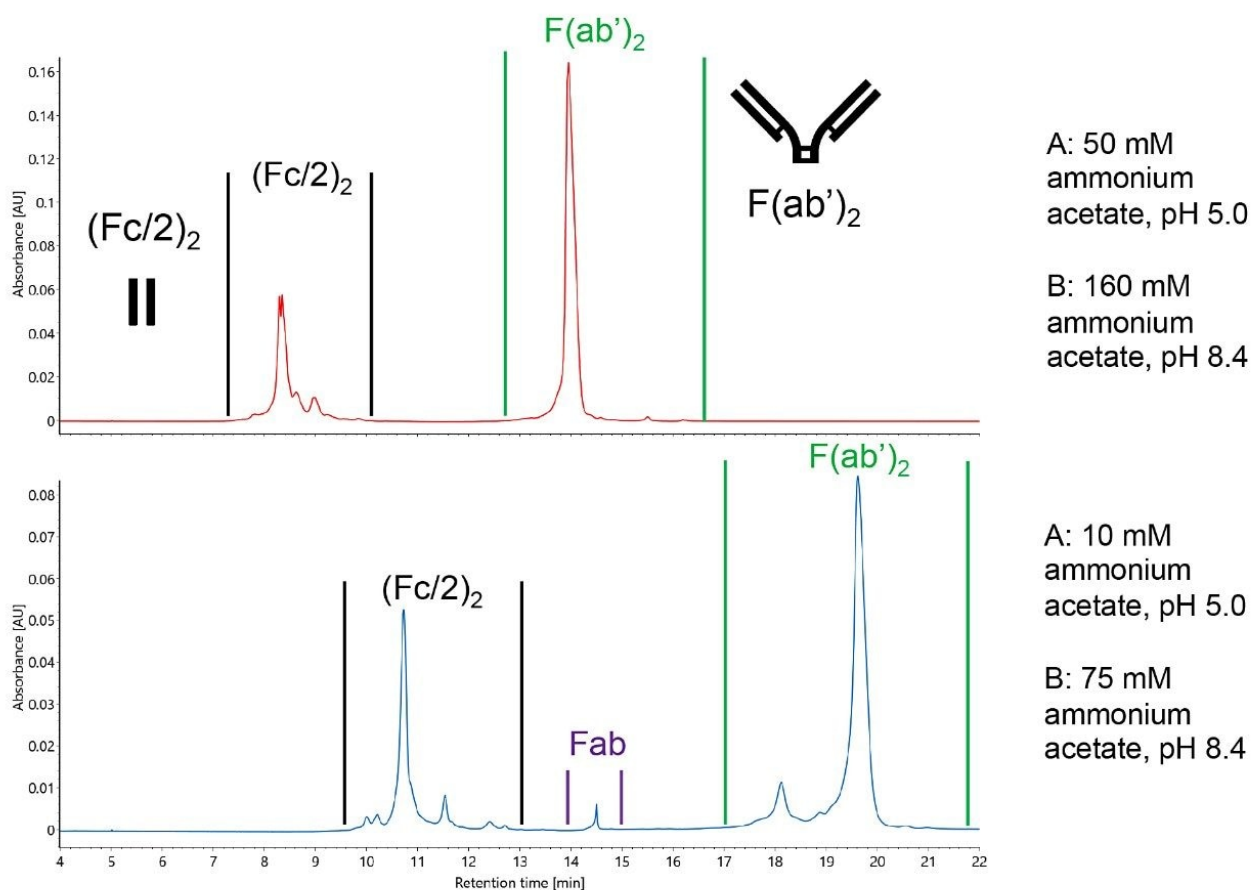


Figure 4. UV₂₈₀ chromatograms of IdeS digested non-reduced NIST mAb obtained with a BioResolve SCX mAb, 2.1 × 50 mm Column using the same LC gradient (2 to 98% B) but different IonHance CX-MS pH Concentrate dilutions.

One looming concern is over dilution; Figure 5 presents a situation in which a high pI mAb, NIST mAb, was not fully eluted due to insufficient ionic strength (which came as a result of using 30x diluted pH Concentrate B, 53 mM ammonium acetate pH 8.4). In this instance, the +1 lysine (+1 K) variant eluted while the +2 K variant did not. To remedy this issue, an analyst can scout for the most suitable dilution. A more desirable separation is also shown in Figure 5, and it was tuned by switching to a concentration of 75 mM for mobile phase B (or 21x diluted CX-MS pH Concentrate B). With this separation and the purity of the mobile phases, it is possible to acquire high quality mass spectra. To this point, Figure 6 shows example raw mass spectra collected for intact NIST mAb, the corresponding deconvoluted mass spectra, and some example peak identifications, such as those for some low

abundance variants.

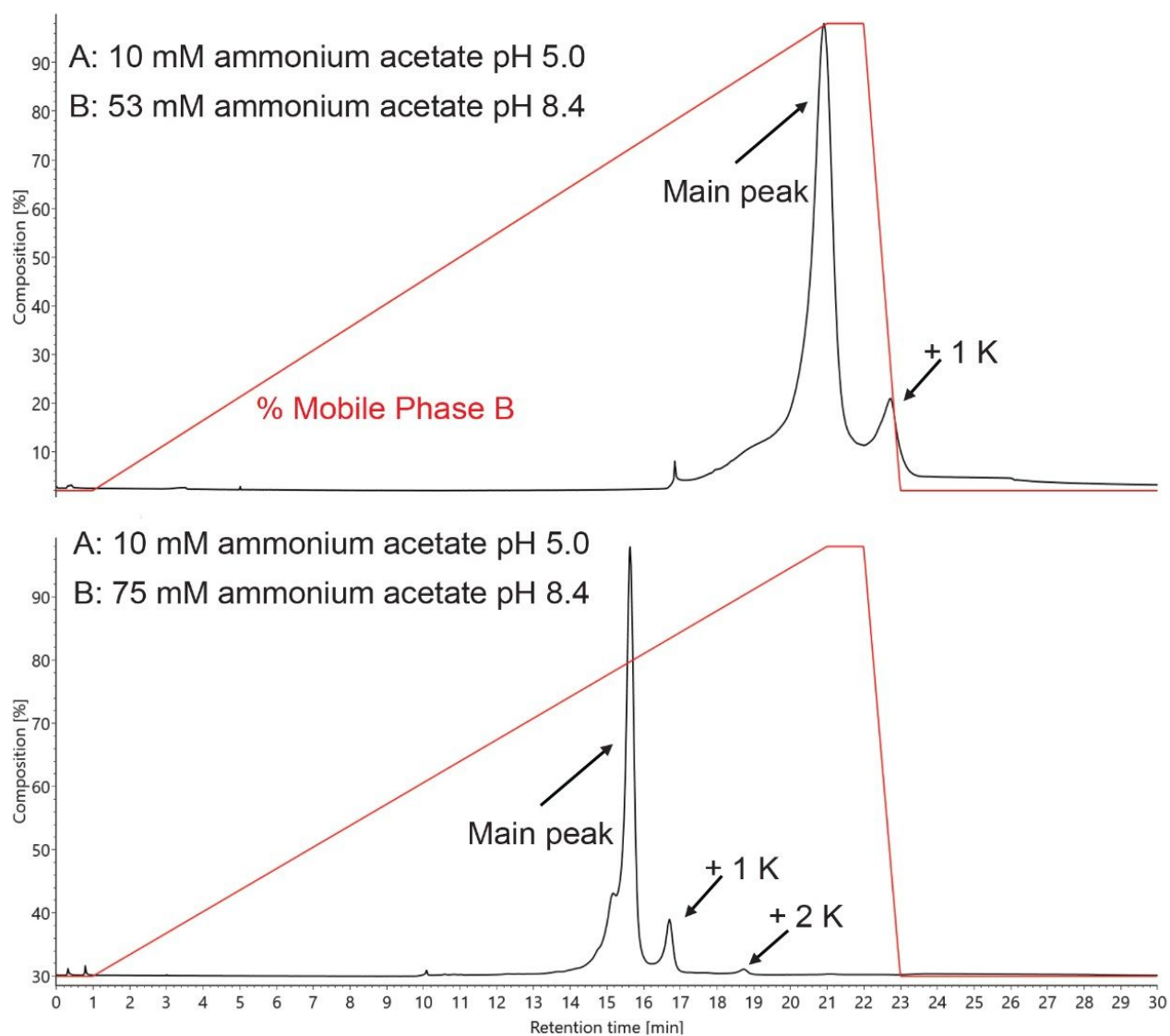


Figure 5. Overlaid UV_{280} chromatogram of intact NIST mAb with buffer B composition trace for a 30 min IEX-MS method running from 2 to 98% B over 21 min.

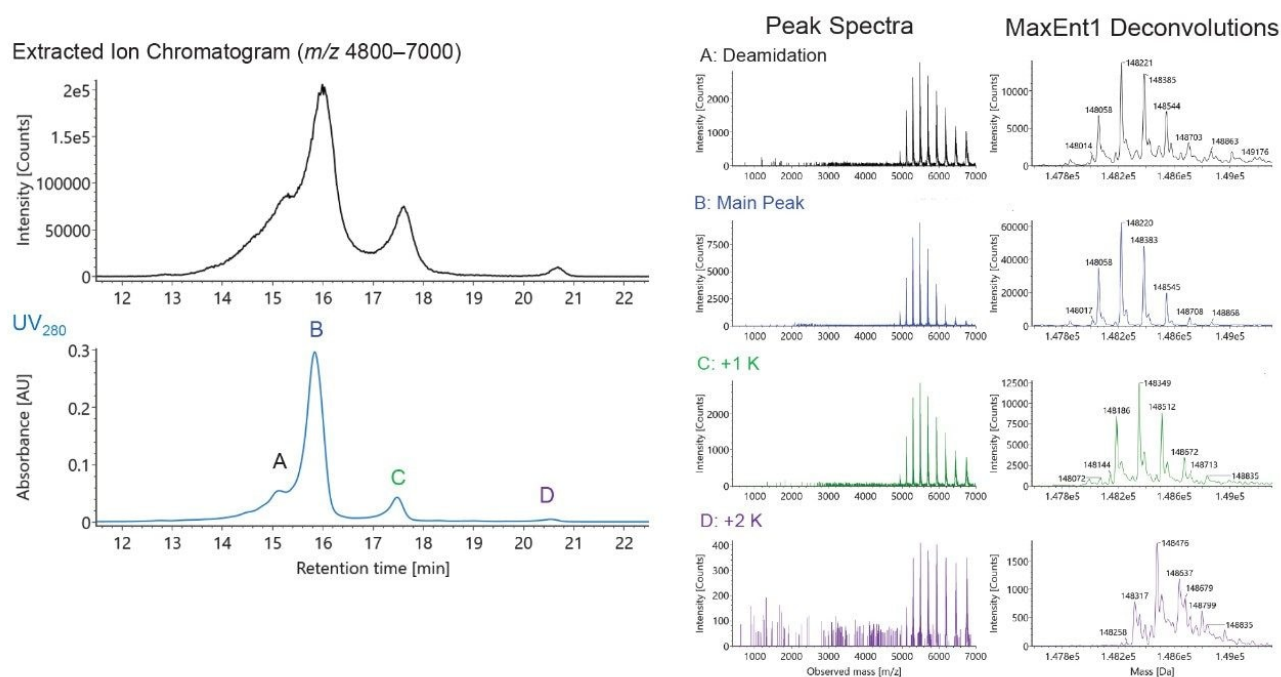


Figure 6. UV_{280} and MS chromatograms of intact NIST mAb as obtained with a BioResolve SCX mAb, 2.1×50 mm Column and IonHance CX-MS pH Concentrate mobile phase using an optimized gradient and ionic strength. MS spectra (A–D) show high efficiency protein ionization and exceptionally low noise affording easy identification of even low abundance species with a $10 \mu\text{g}$ protein load.

Once a satisfactory ionic strength has been selected, the only remaining method parameter to optimize is the gradient, including the steepness in mobile phase change and the window of mobile phase compositions. With this, focused gradients can be developed for specific samples. Gradient optimization for IEX-MS is akin to other chromatographic techniques and can be used to shorten runtimes, control gradient steepness, and improved chromatographic resolution.

Conclusion

Charge variant analysis can be easily achieved through the coupling of ion-exchange chromatography with mass spectrometry, if appropriately formulated mobile phases are used. Literature has shown the advantages of salt-

mediated pH gradients: they afford the ability to chromatographically focus and separate mAb charge variants. The IonHance CX-MS pH Concentrates provide mobile phases for robust separations and achieving high quality MS spectra. The availability of these concentrates should also allow analysts to quickly develop methods for analyzing both intact and subunit-digested samples. If it is of interest to optimize any given separation, two powerful tools exist for method development, namely alternative dilution factors and the fine tuning of LC gradients.

References

1. Fekete, S.; Beck, A.; Fekete, J.; Guillarme, D. Method Development for the Separation of Monoclonal Antibody Charge Variants in Cation Exchange Chromatography, Part I: Salt Gradient Approach. *J. Pharm. Biomed. Anal.* 2015, 102, 33–44.
2. Stoll, D. R. Pass the Salt: Evolution of Coupling Ion-Exchange Separations and Mass Spectrometry. 2019.
3. Khawli, L. A.; Goswami, S.; Hutchinson, R.; Kwong, Z. W.; Yang, J.; Wang, X.; Yao, Z.; Sreedhara, A.; Cano, T.; Tesar, D. B.; Nijem, I.; Allison, D. E.; Wong, P. Y.; Kao, Y.-H.; Quan, C.; Joshi, A.; Harris, R. J.; Motchnik, P. Charge Variants in IgG1. *mAbs*. 2010, 2 (6), 613–624.
4. Stoll, D. R.; Harmes, D. C.; Danforth, J.; Wagner, E.; Guillarme, D.; Fekete, S.; Beck, A. Direct Identification of Rituximab Main Isoforms and Subunit Analysis by Online Selective Comprehensive Two-Dimensional Liquid Chromatography–Mass Spectrometry. *Anal. Chem.* 2015, 87 (16), 8307–8315.
5. Sorensen, M.; Harmes, D. C.; Stoll, D. R.; Staples, G. O.; Fekete, S.; Guillarme, D.; Beck, A., Comparison of Originator and Biosimilar Therapeutic Monoclonal Antibodies Using Comprehensive Two- Dimensional Liquid Chromatography Coupled with Time-of-Flight Mass Spectrometry. *mAbs*. 2016, 8 (7), 1224–1234.
6. Füssl, F.; Cook, K.; Scheffler, K.; Farrell, A.; Mittermayr, S.; Bones, J. Charge Variant Analysis of Monoclonal Antibodies Using Direct Coupled pH Gradient Cation Exchange Chromatography to High-Resolution Native Mass Spectrometry. *Anal. Chem.* 2018, 90 (7), 4669–4676.
7. Leblanc, Y.; Ramon, C.; Bihoreau, N.; Chevreux, G. Charge Variants Characterization of a Monoclonal Antibody by Ion Exchange Chromatography Coupled On-Line to Native Mass Spectrometry: Case Study After a Long-Term Storage at +5 Degrees C. *J. Chromatogr. B: Anal. Technol. Biomed. Life Sci.* 2017, 1048, 130–139.

8. Sankaran, P. K.; Kabadi, P. G.; Honnappa, C. G.; Subbarao, M.; Pai, H. V.; Adhikary, L.; Palanivelu, D. V. Identification and Quantification of Product-Related Quality Attributes in Bio- Therapeutic Monoclonal Antibody via a Simple, And Robust Cation-Exchange HPLC Method Compatible with Direct Online Detection of UV and Native Esi-Qtof-Ms Analysis. *J. Chromatogr. B: Anal. Technol. Biomed. Life Sci.* 2018, 1102-1103, 83–95.
9. Konermann, L. Addressing a Common Misconception: Ammonium Acetate as Neutral pH “Buffer” for Native Electrospray Mass Spectrometry. *J. Am. Soc. Mass Spectrom.* 2017, 28 (9), 1827–1835.
10. Hedges, J. B.; Vahidi, S.; Yue, X.; Konermann, L. Effects of Ammonium Bicarbonate on the Electrospray Mass Spectra of Proteins: Evidence For Bubble-Induced Unfolding. *Anal. Chem.* 2013, 85 (13), 6469–6476.
11. Bailey, A. O.; Han, G.; Phung, W.; Gazis, P.; Sutton, J.; Josephs, J. L.; Sandoval, W. Charge Variant Native Mass Spectrometry Benefits Mass Precision and Dynamic Range of Monoclonal Antibody Intact Mass Analysis. *mAbs.* 2018, 10 (8), 1214–1225.
12. Yan, Y.; Liu, A. P.; Wang, S.; Daly, T. J.; Li, N. Ultrasensitive Characterization of Charge Heterogeneity of Therapeutic Monoclonal Antibodies Using Strong Cation Exchange Chromatography Coupled to Native Mass Spectrometry. *Anal. Chem.* 2018, 90 (21), 13013–13020.
13. Fussl, F.; Trappe, A.; Cook, K.; Scheffler, K.; Fitzgerald, O.; Bones, J. Comprehensive Characterisation of the Heterogeneity of Adalimumab via Charge Variant Analysis Hyphenated On-Line to Native High Resolution Orbitrap Mass Spectrometry. *mAbs.* 2019, 11 (1), 116–128.
14. Cassou, C. A.; Sterling, H. J.; Susa, A. C.; Williams, E. R. Electrothermal Supercharging in Mass Spectrometry and Tandem Mass Spectrometry of Native Proteins. *Anal. Chem.* 2013, 85 (1), 138–146.
15. Sterling, H. J.; Cassou, C. A.; Susa, A. C.; Williams, E. R. Electrothermal Supercharging of Proteins in Native Electrospray Ionization. *Anal. Chem.* 2012, 84 (8), 3795–801.
16. Muneeruddin, K.; Nazzaro, M.; Kaltashov, I. A. Characterization of Intact Protein Conjugates and Biopharmaceuticals Using Ion-Exchange Chromatography with Online Detection by Native Electrospray Ionization Mass Spectrometry and Top-Down Tandem Mass Spectrometry. *Anal. Chem.* 2015, 87 (19), 10138–10145.
17. Farjami, A.; Siahi-Shadbad, M.; Akbarzadehlaleh, P.; Molavi, O. Development and Validation of Salt Gradient Cex Chromatography Method for Charge Variants Separation and Quantitative Analysis of the IgG mAb-

Cetuximab. *Chromatographia*. 2018, 81 (12), 1649–1660.

18. Fekete, S.; Beck, A.; Fekete, J.; Guillarme, D. Method Development for the Separation of Monoclonal Antibody Charge Variants in Cation Exchange Chromatography, Part II: Ph Gradient Approach. *J. Pharm. Biomed. Anal.* 2015, 102, 282–9.
19. Farsang, E.; Murisier, A.; Horvath, K.; Beck, A.; Kormany, R.; Guillarme, D.; Fekete, S. Tuning Selectivity in Cation-Exchange Chromatography Applied for Monoclonal Antibody Separations, Part 1: Alternative Mobile Phases and Fine Tuning of the Separation. *J. Pharm. Biomed. Anal.* 2019, 168, 138–147.
20. Zhang, L.; Patapoff, T.; Farnan, D.; Zhang, B. Improving pH Gradient Cation-Exchange Chromatography of Monoclonal Antibodies by Controlling Ionic Strength. *J. Chromatogr. A*. 2013, 1272, 56–64.

Featured Products

BioAccord LC-MS System for Biopharmaceuticals <<https://www.waters.com/waters/nav.htm?cid=135005818>>

ACQUITY UPLC I-Class PLUS System <<https://www.waters.com/134613317>>

ACQUITY UPLC Tunable UV Detector <<https://www.waters.com/514228>>

UNIFI Scientific Information System <<https://www.waters.com/134801359>>

720006761, February 2020



©2019 Waters Corporation. All Rights Reserved.