

Enhancing Analysis Specificity and Deconvolution of Natural Products Using a Positive Mode, Ion Mobility Mass Spectrometry Library

Michael McCullagh, Russell J. Mortishire-Smith, Jeff Goshawk

Waters Corporation



Abstract

This application note presents an electrospray (ESI), positive mode, natural products library. The increased use of LC-MS-based methods to profile medicinal plants/herbal remedies and complex samples has become more pivotal in phytochemical profiling; but remains a challenge due to sample complexity.

Benefits

- A unique, multi metric, natural products library utilizing enhanced specificity produced from cumulative metrics; retention time, collision cross section, and precursor/product ion accurate mass measurements.
- Highly specific retention time and drift-aligned, product ions for all analytes in a single acquisition.
- Reduced false detection rates with application of larger, flexible, analytical tolerances afforded by the orthogonality of the screening parameters.
- Enhanced peak capacity and deconvolution of isomeric species to reduce sample complexity.

Introduction

The use of the ion mobility mass spectrometry (MS) collision cross sections (CCS) as an additional cumulative metric has been discussed previously.¹⁻⁵ CCS measurements have been shown to be robust and reproducible.⁶ The use of CCS for small molecule analysis has increased across multiple research areas including pharmaceutical (e.g., metabolism, metabolomics, lipidomics) and food safety (e.g., veterinary drugs, mycotoxins, steroids, steviol glycosides, natural product screening, natural toxins). In these research areas, generation of CCS searchable libraries allows the application of a CCS metric which can increase the specificity of identification, and consequently can be used to decrease the false detection rate.

A strategy has been developed to facilitate the efficient and robust generation of mass spectrometry libraries that incorporate precursor/product ions, adduct ions, retention times, and CCS values. Briefly, the library building strategy utilizes analytical standards, which are screened in triplicate, using both positive and negative ion electrospray ionization. Average CCS values (including those of adducts) and product ions are extracted from the processed data to produce analyte-specific, MS library information.⁷

This application note presents an electrospray (ESI), positive mode, natural products library. The increased use of

LC-MS-based methods to profile medicinal plants/herbal remedies and complex samples has become more pivotal in phytochemical profiling; but remains a challenge due to sample complexity.⁴

Experimental

Sample description

Green tea extract (p/n: 186006962)

33 mg was dissolved in 2 mL of methanol/water 1/3 solution, and diluted further to a working concentration of 8.25 mg/mL for analysis.

Method conditions

LC conditions

System:	ACQUITY UPLC I-Class
Detection:	Ion mobility mass spectrometry
Vials:	LCMS Certified Clear Glass 12 × 32 mm Screw Neck Total Recovery Vial, with Cap and Pre-slit PTFE/Silicone Septa, 1 mL volume, (p/n:600000671CV)
Column:	ACQUITY UPLC BEH C ₁₈ , 1.7 μm, 2.1 × 100 mm (p/n: 186003950)

LC conditions

Column temp.:	45 °C
Sample temp.:	10 °C
Injection volume:	10 µL
Flow rate:	0.75 mL/min
Mobile phase A:	0.1% formic acid in water
Mobile phase B:	0.1% formic acid in acetonitrile
Gradient:	0–1 min isocratic (98:2.0 [A:B]), 5 min (95:5), 10 min (80:20), 13 min (70:30), 15 min (20:80), 15.1 min (98:2.0), and 17 min (98:2.0)

MS conditions

System:	SYNAPT G2-Si
Ionization mode:	ESI+
Capillary voltage:	3 kV
Cone voltage:	30 V

Desolvation temp.:	550 °C
Source temp.:	150 °C
Acquisition range:	m/z 50–1200
Acquisition rate:	10 spectra/s
Lockmass:	Leucine enkephalin ($C_{28}H_{37}N_5O_7$ (m/z 556.2766 +ve))
Collision energy:	HDMS ^E low collision energy 4 eV and high collision energy ramp (30 to 75 eV)
MS resolution:	20,000 resolution full width half maximum (FWHM) at m/z 556
IM resolution:	$\approx 40 \Omega/\Delta\Omega$ (FWHM)
IMS parameters:	Default IMS screening
parameters include:	T-Wave Velocity Ramp = Start: 1000 m/s End: 300 m/s , T-Wave Pulse Height = 40 V and a gas flow of helium 180 mL and nitrogen 90 mL (buffer gas) for the respective gas cells was used, giving an IM cell pressure of ~ 33.2 mBar
Calibration:	IMS/ToF Calibration Kit (p/n: 186008113)

Data management

Chromatography software:	MassLynx v4.1 SCN 916/924
MS software:	MassLynx v4.1 SCN 916/924

Results and Discussion

A positive ion mode, mass spectrometry library incorporating precursor/product ion, retention time using a standard gradient, and CCS values has been developed. A green tea extract was screened to assess the utility of the library. The UPLC-MS BPI chromatogram obtained, and the corresponding orthogonal ion mobility separation, is shown in Figure 1, where it is evident that coeluting analytes can be deconvoluted using ion mobility (separation due to shape, charge, and mass).^{8,9}

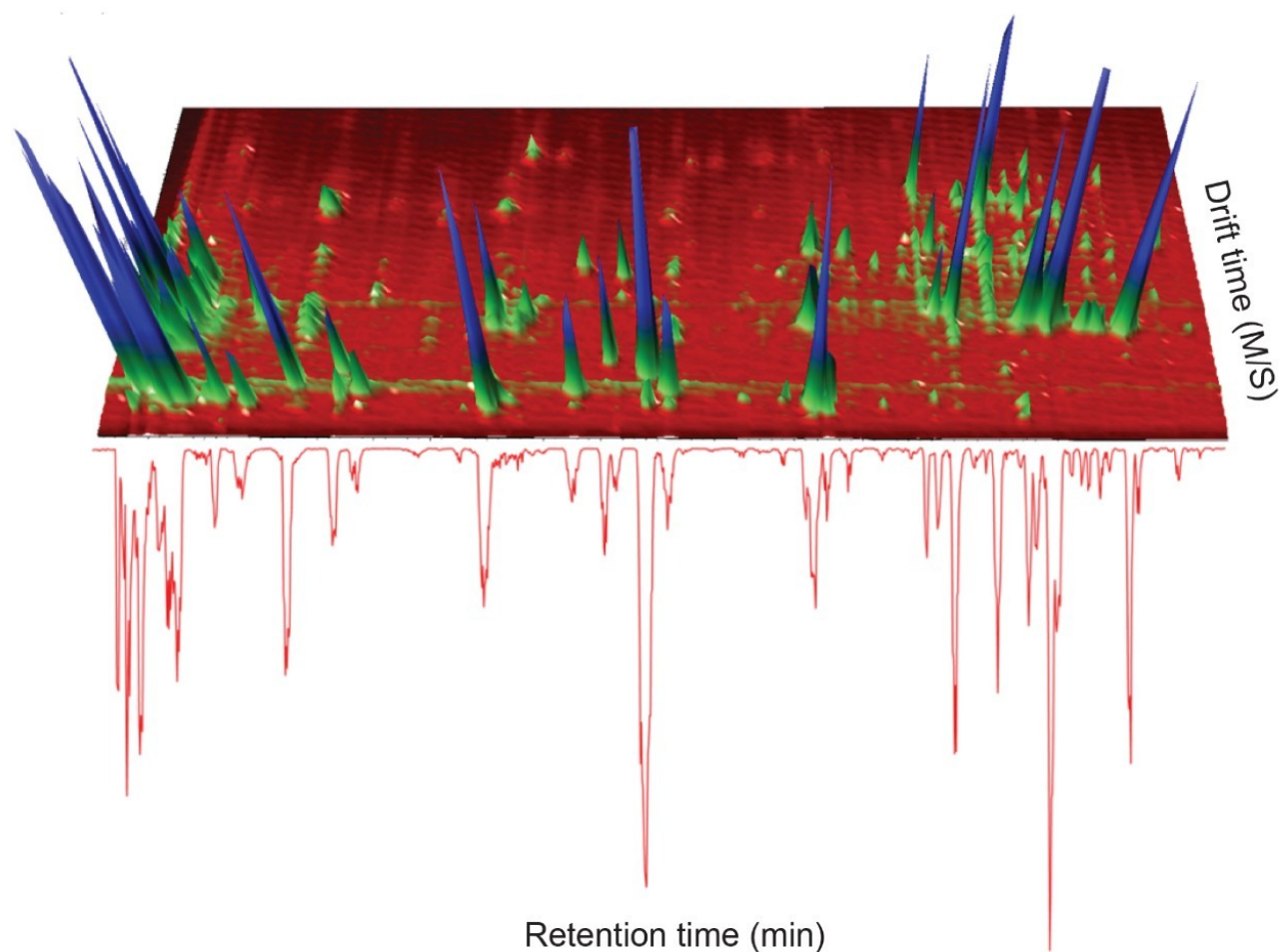


Figure 1. Positive mode base peak ion chromatogram (BPI) with ion mobility separation on the y-axis (drift time [MS]), illustrating increased peak capacity and deconvolution of chromatographically co-eluting analytes detected in green tea extract.

The component summary for analytes identified is shown in Figure 2. Literature searches have confirmed that many, if not all, of the identified components are known to be present in green tea. However, it should be noted, confirmed detection/identification is based on generation of a match to a constituent of the library generated. 7-C glycosylated flavones (13), flavanols (12), flavan-3-ols (2,4), purine alkaloids (1,3), and flavonoids (5–11) have been identified. 6-C/8-C glycosides (homoorientin/orientin and isovitexin/vitexin) were previously determined to be present in black tea and vitexin in green tea.^{10,11} From the manual interrogation of the exact mass extracted mass chromatogram of orientin, evidence of a shoulder due to another isomeric species was observed.

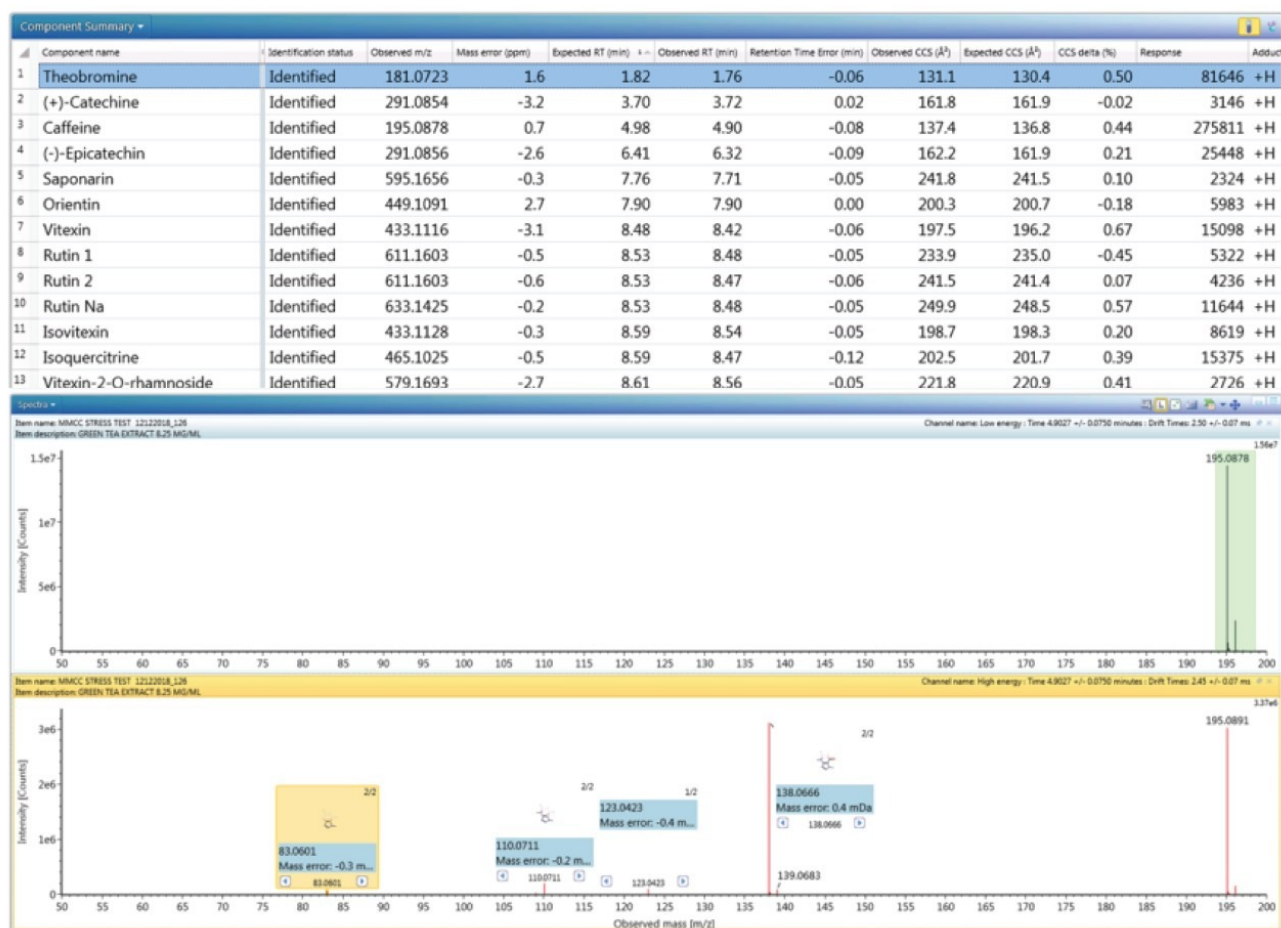


Figure 2. Component summary for analytes detected and identified in green tea extract using a natural products, multi-metric, mass spectrometry library with the determined caffeine retention/drift time aligned ion mobility precursor/product ion spectrum. Expected caffeine library product ions were matched within 0.5 mDa. Figure 2 also shows a set of identifications made with mass accuracy <3.2 ppm, and <1% variation for CCS. The CCS metric provides an additional identification point for analytes of low abundance where there is insufficient ion intensity for product ion formation. The product ions generated are highly specific, because they are both retention time and drift time aligned, which is an enhancement compared with mass spectrometry techniques that produce retention time aligned fragment ions alone. The ion-mobility product ion spectrum of caffeine detected in green tea is presented in Figure 2. Excellent mass accuracy of the product ions is also illustrated (within 0.5 mDa), when compared to the expected product ions of caffeine in the natural products library. Caffeine was here identified using seven identification points, precursor ions, four product ions, retention time, and its CCS (0.4% delta).

To further illustrate the utility, robustness, and confidence that can be obtained when using a natural products,

multi metric mass spectrometry library, green tea extract was fortified with a series of known analytes. These analytes are shown in Figure 3, where the component summary for identified unknown analytes and known analytes are also presented. All fortified analytes were detected and identified correctly. Fortification of the 6-C/8-C glycosides (homoorientin/orientin and isovitexin/vitexin) confirmed their presence within the green tea extract. Identification of such isomers can prove to be a challenge. In Figure 3, it can be seen that homoorientin is identified at 7.85 minutes and orientin at 7.90 minutes, with only 0.05 minute difference in observed retention time; however, the incorporation of CCS into the library has enabled the observed difference in CCS to be utilized, and the relative values are sufficient to ensure that the correct identification assignment can be made. This is relevant whether the library is used within UNIFI or Progenesis QI Software.

Component Summary												
	Component name	Identification status	Observed m/z	Mass error (ppm)	Expected RT (min)	Observed RT (min)	Retention Time Error (min)	Observed CCS (Å²)	Expected CCS (Å²)	CCS delta (%)	Response	Adducts
1	Theobromine	Identified	181.0714	-3.3	1.82	1.75	-0.06	131.0	130.4	0.39	63146	+H
2	Caffeine	Identified	195.0878	1.0	4.98	4.89	-0.09	137.7	136.8	0.69	205290	+H
3	(-)-Epicatechin	Identified	291.0850	-4.4	6.41	6.31	-0.10	162.2	161.9	0.17	14805	+H
4	Saponarin	Identified	595.1639	-3.1	7.76	7.71	-0.05	241.8	241.5	0.14	1389	+H
5	Homoorientin	Identified	449.1066	-2.7	7.85	7.84	-0.01	203.7	202.6	0.56	33735	+H
6	Orientin	Identified	449.1063	-3.3	7.90	7.90	0.00	199.8	200.7	-0.44	37626	+H
7	Vitexin	Identified	433.1130	0.1	8.48	8.42	-0.06	197.0	196.2	0.37	52709	+H
8	Rutin 1	Identified	611.1608	0.3	8.53	8.47	-0.05	233.5	235.0	-0.62	3879	+H
9	Rutin 2	Identified	611.1608	0.3	8.53	8.47	-0.06	241.2	241.4	-0.07	3196	+H
10	Rutin Na	Identified	633.1414	-1.9	8.53	8.47	-0.06	249.0	248.5	0.19	14473	+H
11	Isovitexin	Identified	433.1130	0.3	8.59	8.53	-0.05	198.8	198.3	0.25	43686	+H
12	Isoquercitrine	Identified	465.1017	-2.3	8.59	8.47	-0.12	202.3	201.7	0.27	10345	+H
13	Vitexin-2-O-rhamnoside	Identified	579.1689	-3.3	8.61	8.56	-0.04	221.9	220.9	0.45	1374	+H
14	Apigenin-7-glucoside	Identified	433.1115	-3.3	9.60	9.54	-0.06	203.9	202.7	0.60	38819	+H
15	Apigenin	Identified	271.0612	4.0	11.95	11.88	-0.07	156.8	155.2	1.05	172026	+H
16	Tanshinone IIA	Identified	295.1335	2.0	15.27	15.26	-0.01	164.9	164.1	0.47	205903	+H

Fortified analytes

Figure 3. Component summary for detected and identified known/unknown analytes within fortified green tea extract using a natural products, multi-metric, mass spectrometry library.

Figure 4 shows the extracted, exact mass chromatogram for m/z 433.1128, where a series of ten minor/major peaks were observed with four isomers within a retention time window of 0.4 minutes. When performing natural products analysis, the analyte concentration in the extracts can vary significantly. Frequently many isomeric species are present, which cannot be identified specifically using only accurate mass measurement alone. Subtle variations in retention time and analyte concentration will impact the ability to identify such isomeric species with confidence. The challenges and successful characterization/ identification of isomeric species has previously been described using cumulative specificity of ion-mobility CCS, retention time, and ion-mobility product ions.⁴

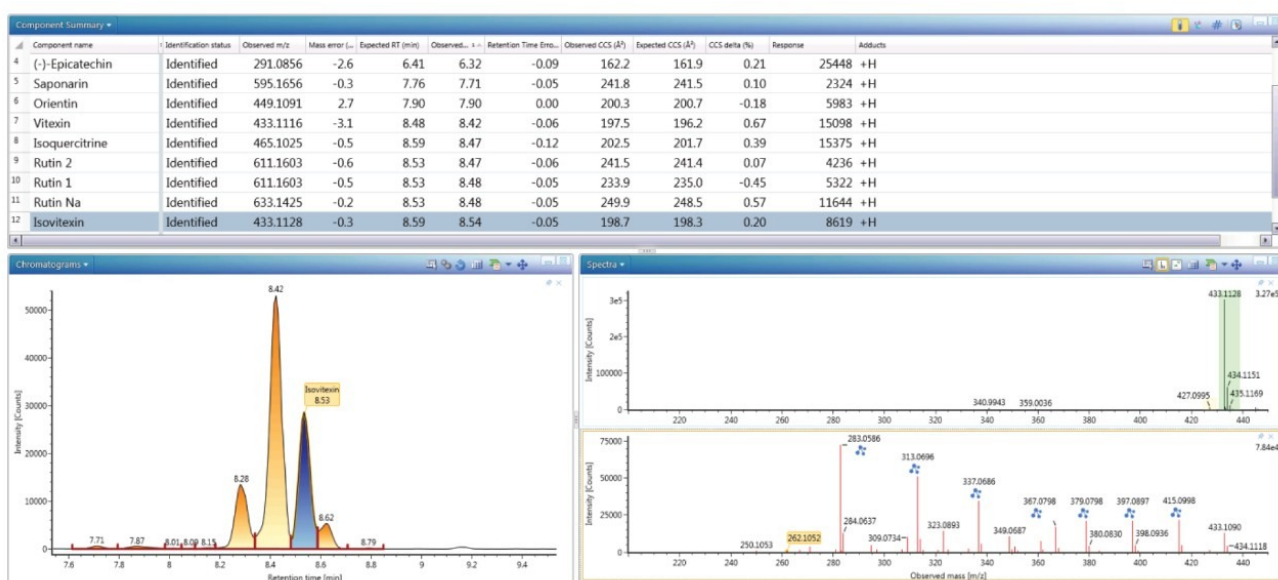


Figure 4. UNIFI component summary and extracted, exact-mass chromatogram (m/z 433.1128) that illustrate ten isomeric peak detections. Isovitexin retention/drift time aligned ion mobility precursor/product ion spectrum at retention time 8.53 min with CCS delta 0.2%.

The advantage of enhancing the specificity of the mass spectrometry library using CCS is illustrated in Figure 5, where green tea extract has been analyzed using an alternative chromatographic method to that used to produce the natural products library (Waters Application Note, p/n: 72004837EN). A retention time window of 10 minutes was utilised rather than 0.2 minutes, and the largest candidate response within the retention processing window is reported in UNIFI's component summary. The strategy employed in data processing utilizing only CCS and m/z as the screening parameters can be used as a highly time efficient tool to investigate/compare analysis results where different chromatographic methods are employed. As can be seen from Figure 5, impressively, most analytes identified in the component summary in Figure 3 have been identified, also two additional analytes were identified, which were not previously documented in the literature as being present in green tea. This approach illustrates that more flexibility can be attained from the utility of mass spectrometry libraries by increasing the cumulative specificity and selectivity of the identification points within the library.¹² Additional identification points/specificity can also result from multiple adducts, and the formation of protomer's (charged isomers) or conformers,³ where more than one ion mobility peak is observed for a single analyte. This can be illustrated for rutin, for which 3 CCS values are obtained, comprised of 235 Å^2 (conformer 1), 241.4 Å^2 (conformer 2), and 248.6 Å^2 ($[M+Na]^+$), producing a highly specific CCS fingerprint, which has been uniquely incorporated into the natural-products, mass spectrometry library.

	Component name	Identification status	Observed m/z	Mass error (ppm)	Expected RT (min)	Observed RT (min)	Retention Time Error (min)	Observed CCS (Å²)	Expected CCS (Å²)	CCS delta (%)	Response	Expected Fragments Found	Adducts
1	Theobromine	Identified	181.0721	0.4	1.82	3.16	1.35	130.9	130.4	0.34	11609	2	+H
2	Caffeine	Identified	195.0875	-0.7	4.98	5.18	0.20	137.0	136.8	0.20	26832	4	+H
3	(-)-Epicatechin	Identified	291.0865	0.5	6.41	6.14	-0.27	162.2	161.9	0.18	5172	3	+H
4	Saponarin	Identified	595.1669	1.9	7.76	6.64	-1.12	241.0	241.5	-0.23	12320	2	+H
5	Homoorientin	Identified	449.1087	1.9	7.85	7.45	-0.40	203.0	202.6	0.23	13947	5	+H
6	Vitexin	Identified	433.1115	-3.4	8.48	8.41	-0.07	198.4	196.2	1.10	17029	5	+H
7	Rutin	Identified	611.1596	-1.8	8.53	8.33	-0.20	233.5	235.0	-0.64	3323	1	+H
8	Isoquercitrine	Identified	465.1018	-2.2	8.59	8.33	-0.26	202.1	201.7	0.20	7651	1	+H
9	Apigenin-7-glucoside	Identified	433.1118	-2.5	9.60	9.75	0.15	203.5	202.7	0.37	18205	1	+H
10	Eriodictyol	Identified	289.0711	1.6	10.50	6.24	-4.25	165.0	164.3	0.39	12357	1	+H
11	Quercetin	Identified	303.0493	-2.1	10.84	8.33	-2.50	163.4	163.4	-0.01	33265	1	+H
12	Luteolin	Identified	287.0549	-0.6	10.92	9.26	-1.66	159.3	159.8	-0.26	16745	1	+H
13	Apigenin	Identified	271.0599	-0.6	11.95	13.58	1.63	156.3	155.2	0.73	42010	5	+H
14	Tanshinone IIA	Identified	295.1329	0.0	15.27	18.28	3.01	163.9	164.1	-0.13	49374	5	+H

Figure 5. Component summary for analytes detected (using a different gradient to that used in the development of the Natural Products Library, Waters Application Note, p/n: 72004837EN) and identified within fortified green tea extract using a natural products, multi-metric, mass spectrometry library.

In the natural products library, luteolin 3,7 luteolin-diglucoside ($C_{27}H_{30}O_{16}$) has an expected retention time of 8.39 minutes, compared to 8.54 minutes for rutin ($C_{27}H_{30}O_{16}$), both within the 0.2 minute retention time tolerance window set for data processing. However, the unique rutin CCS fingerprint has facilitated its differentiation from luteolin 3,7 diglucoside.

Conclusion

- A multi metric, positive ion, natural products library has been developed that incorporates retention time, exact mass, product ions, and CCS values.
- The robustness of the natural products library has been verified where components present in green tea and fortified green tea extracts have been correctly identified.
- Detection and identification utilizing cumulative specificity enables less stringent/more flexible screening parameters to be applied, without increasing false detections.
- Incorporation of CCS fingerprint data has been used to enhance specificity and avoid false detections, which were not distinguished using accurate mass measurement only.
- Rutin conformers have been uniquely separated, with determined CCS values incorporated into the natural products library.
- Ion mobility provides enhanced peak capacity to deconvolute complex samples, facilitating the acquisition of the non-targeted retention/drift time aligned precursor/product ions of all analytes detected in a single acquisition.

- The utility of the natural products library developed illustrates the potential to analyse complex extracts efficiently with increased flexibility and specificity simultaneously.

References

1. Goscinny, S.; McCullagh, M.; Far, F.; De Pauw, E.; Eppe G. Towards the Use of Ion Mobility Mass Spectrometry Derived Collision Cross Section as a Screening Approach for Unambiguous Identification of Targeted Pesticides in Food. *Rapid Commun. Mass Spectrom.* 2019, 33(S2), 1–15.
2. McCullagh, M.; Eatough, D.; Hanot, V.; Goscinny, S. Discovery of Pesticide Protomers Using Routine Ion Mobility Screening. Waters Application Note, 720005028EN, 2014.
3. McCullagh, M.; Giles, K.; Richardson, K.; Stead, S.; Palmer, M. Investigations into the Performance of Travelling Wave Enabled Conventional and Cyclic Ion Mobility Systems to Characterise Protomers of Fluoroquinolone Antibiotic Residues. *Rapid Commun. Mass Spectrom.* 2019, 33(S2), 1–11.
4. McCullagh, M.; Pereira, C. A. M.; Yariwake, J. H. Use of Ion Mobility Mass Spectrometry to Enhance Cumulative Analytical Specificity and Separation to Profile 6-C/8-Cglycosylflavone Critical Isomer Pairs and Known–Unknowns in Medicinal Plants. *Phytochemical Analysis.* 2019, 30(4), 1–13.
5. McCullagh, M.; Douce, D.; Van Hoeck, E.; Goscinny, S. Exploring the Complexity of Steviol Glycosides Analysis Using Ion Mobility Mass Spectrometry. *Anal. Chem.* 2018, 90, 4585–4595.
6. McCullagh, M.; Wood, M.; Mistry, N.; Palmer, M.; Giles, K.; Richardson, K.; Goscinny, S.; Douce, D.; Dalsgaard, P. Investigations into Cross-Platform and Long-Term Robustness of a CCS Metric. 67th ASMS Conference on Mass Spectrometry and Allied Topics, Atlanta, GA, June 2–6, 2019.
7. Goshawk, J.; Barknowitz, G.; McCullagh, M. The Development of a Natural Products Library Using Ion-Mobility Enabled Mass Spectrometry. 67th ASMS Conference on Mass Spectrometry and Allied Topics, Atlanta, GA, June 2–6, 2019.
8. Pringle, S.D.; Giles, K.; Wildgoose, J.L.; et al. An Investigation of the Mobility Separation of Some Peptide and Protein Ions Using a New Hybrid Quadrupole/ Travelling Wave IMS/oa-ToF instrument. *International Journal of Mass Spectrometry.* 2014, 26, 1–12.
9. Giles, K.; Pringle, S. D.; Worthington, K. R.; Little, D.; Wildgoose, J.; Bateman, R. H. Applications of a Travelling

Wave-Based Radio Frequency Only Stacked Ring Ion Guide. Rapid Commun. *Mass Spectrom.* 2004, 18, 2401.

10. Engelhardt, U. H.; Finger, A.; Kuhr, S. Determination of Flavone C-Glycosides in Tea. *Z Lebensm Unters Forsch.* 1993, 197(3), 239–44.
11. Sakamoto, Y. Isolation and Structures of Flavones Occurring in Green Tea Infusion. *Agr. Biol. Chem.*, 1967, 31(9), 10291034.
12. McCullagh, M.; Douce, D.; Hanot, V.; Goscinny, S. Illustration of the Selectivity of Collision Cross Section Ion Mobility Screening for the Analysis of Pesticide Residues in Food Using IonKey/MS. Waters Application Note, 720005427EN, 2015.

Featured Products

- [ACQUITY UPLC I-Class PLUS System <https://www.waters.com/134613317>](https://www.waters.com/134613317)
- [SYNAPT G2-Si Mass Spectrometry <https://www.waters.com/134740653>](https://www.waters.com/134740653)
- [MassLynx MS Software <https://www.waters.com/513662>](https://www.waters.com/513662)
- [UNIFI Scientific Information System <https://www.waters.com/134801648>](https://www.waters.com/134801648)
- [Progenesis QI <https://www.waters.com/134790652>](https://www.waters.com/134790652)

720006650, September 2019



©2019 Waters Corporation. All Rights Reserved.