

Nota applicativa

Analysis of Plasma Proteins using 1 mm Scale Chromatography and the Xevo G2-XS QToF Operating in SONAR Acquisition Mode

Christopher Hughes, Lee A. Gethings

Waters Corporation

For research use only. Not for use in diagnostic procedures.

This is an Application Brief and does not contain a detailed Experimental section.

Abstract

This Application brief demonstrates the utility of a larger scale chromatography system for plasma proteomics over traditionally employed systems. In addition to increased throughput, this methodology would be aligned with other omics analytical scale methods, such as metabolomics and lipidomics.

Benefits

Identification and quantification of plasma based proteins utilizing the Biognosys PQ500 reference peptide kit on the ACQUITY UPLC I-Class System and 1 mm scale chromatography column.

Introduction

Plasma proteomics, in a clinical research environment, requires samples to be analyzed with high throughput, utilizing an extremely reproducible chromatography system coupled to a mass spectrometer with the ability to produce data of high specificity. Quantitative proteomics often incorporates the use of stable isotope labelled (SILs) peptides spiked into the analyte in order to provide absolute quantitation. For use in plasma proteomics, there has been the recent introduction of Biognosys PQ500, a panel set of more than 500 SIL peptides. Normally, proteomic experiments involve very low sample amounts and require nanoscale chromatography to provide ultimate sensitivity. However, since the type of samples analyzed in plasma proteomics tend to have tryptic peptides present in relatively large amounts, previous experiments have involved the use of 300 micron scale chromatography.¹ In the experiments described here, we have scaled the chromatography further and investigated the use of the ACQUITY UPLC I-Class System equipped with a 1 mm I.D. column for sample introduction. In addition to increased throughput, this methodology provides increased flexibility and therefore provides the prospect of using a single platform for plasma proteomics, metabolomics, and lipidomics.

Results and Discussion

The samples analyzed consisted of tryptically digested, undepleted human plasma from three different conditions spiked with Biognosys PQ500 SIL peptides. Sample groups consisted of controls (n=6), chronic obstructive pulmonary disease (n=6), and asthma (n=6). Individual samples per group were pooled to provide three working samples. In addition, a pool of all conditions/samples acted as a QC. An ACQUITY UPLC I-Class System was equipped with an ACQUITY UPLC CSH130 C₁₈, 1 mm x 100 mm long analytical column (p/n 186006934). Samples were analyzed in triplicate (QC = 5 injections) at two different loadings of 5 ug and 10 ug, which incorporated the PQ500 at 'Injection Equivalents' of one and two respectively. The samples were separated using a reversed phase gradient from 1% to 40% acetonitrile (+0.1% formic acid) over 15, 30, or 45 minutes at a flow rate of 50 µL/min. In order to minimize any post column peak broadening, a short piece of 60 micron I.D. PEEK tubing connected the output of the column to a low flow ESI probe. The mass spectrometer acquisition mode employed was SONAR DIA, which has been described elsewhere.² The same conditions were applied here. Data were processed using Progenesis QI for Proteomics and Spectronaut Pulsar X (Biognosys, Schlieren, Switzerland). Searches were performed using carbamidomethyl C (fixed) and oxidation of methionine (variable) modifications in addition to a 1% FDR.

Chromatograms in Figure 1(a) represent the effect of gradient length on peptide separation, where shown are

data from the three different gradient lengths and a load of 10 μ g. The excellent chromatographic reproducibility obtained for the shortest gradient length is shown in Figure 1(b), which represents three overlaid chromatograms for 15 min gradient length and a 10 μ g load. When data is processed using Spectronaut, heavy and light analogues are identified from the peptide panel. For a 10 μ g load and 45 minute gradient, one such heavy and light identification is shown in Figure 2 for the peptide EDVYVGVTLR from C₄b-binding protein alpha chain (Uniprot accession: P04003). In total, 159 light/heavy pairs are identified in this experiment. The total number of quantified protein identifications from searches performed within Progenesis Q1 for Proteomics are shown in Figure 3. Gradient length had little effect on protein IDs for the 5 μ g loadings but longer gradients were more beneficial for the 10 μ g loading. The samples used for this study consisted of two different respiratory disease states, normal control, and a pooled QC. The PCA plot shown in Figure 4 indicates that separation of the different groups is readily achieved and corresponding CVs of <8% (Figure 5) further demonstrate the technical reproducibility of the data.

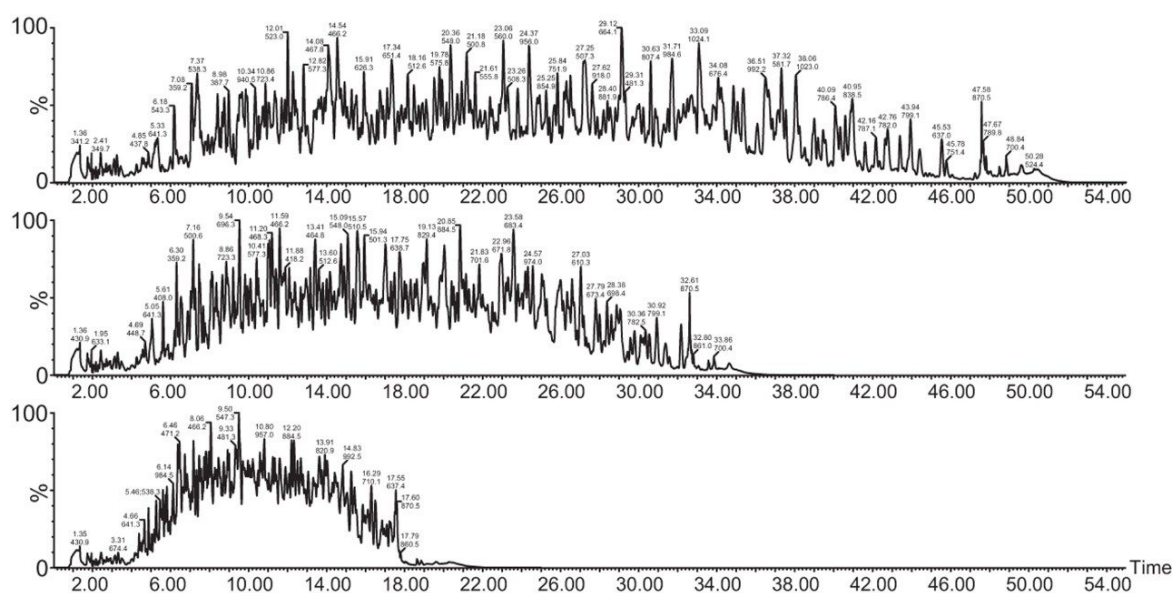


Figure 1(a). Gradient length effect: Chromatograms for 15, 30, and 45 minute separations based on 10 μ g loadings.

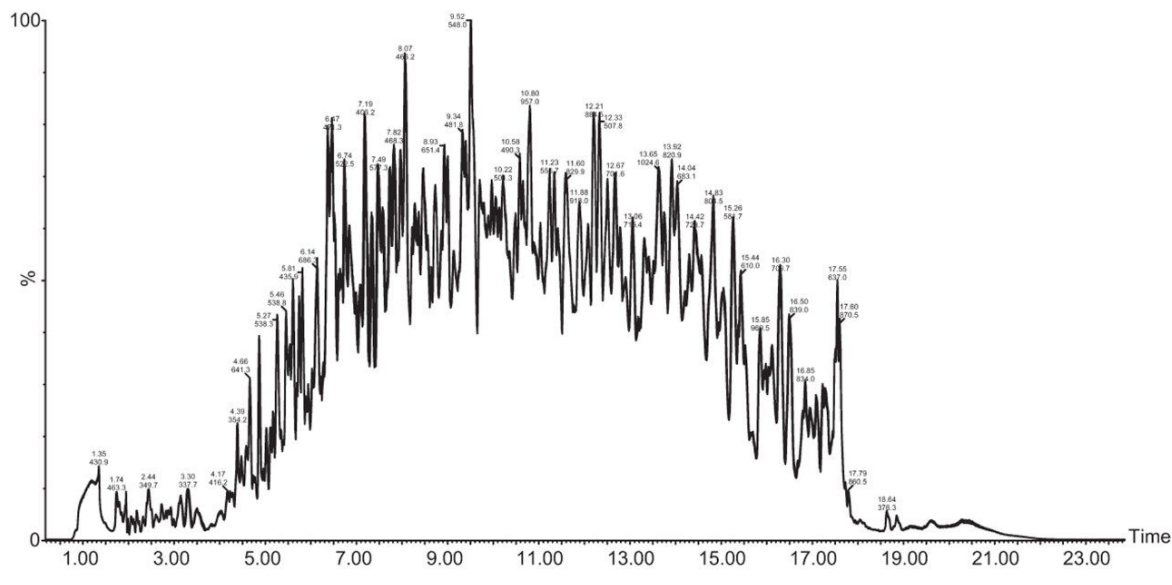


Figure 1(b). Gradient Reproducibility: Overlay of three injections of 10 μ g of plasma separated over a 15 minute gradient.

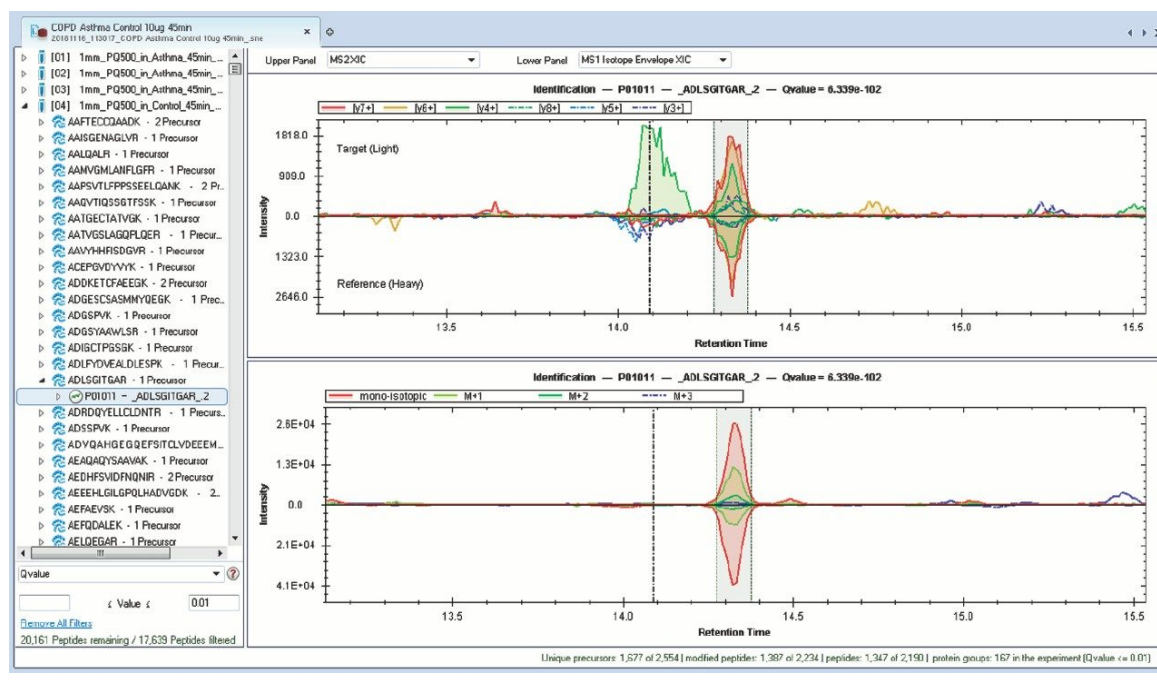


Figure 2. Spectronaut Pulsar X extracted ion chromatogram for Biognosys PQ500 heavy labeled peptide EDVYVVGVTLR and its corresponding light analogue from digested, undepleted plasma.

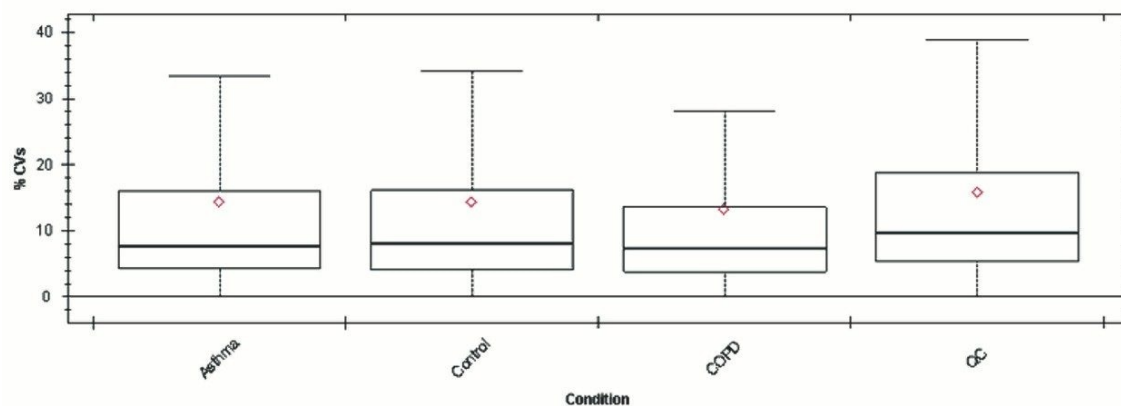


Figure 5. Precursor CVs derived from Spectronaut library searching.

Conclusion

We have shown the utility of 1 mm scale chromatography for the analysis of typical samples from plasma proteomic experiments, where sample amounts tend to be present at elevated levels. The gradient has been delivered using an ACQUITY UPLC I-Class System and therefore raises the prospect of a single LC-MS platform for proteomics and other omic applications, such as metabolomics and lipidomics. The SONAR DIA acquisition method offers a compatible acquisition speed for rapid chromatographic methods of this type.

References

1. Hughes, CJ, et al. Rapid Qualitative Analysis and Absolute Quantification of Plasma Proteins using SONAR with Biognosys PQ500 for Proteomic Clinical Research Studies. Waters Application Note. 720006388EN. 2018.
2. Moseley, MA, et al. Scanning Quadrupole Data-Independent Acquisition, Part A: Qualitative and Quantitative Characterization. *J Proteome Res.* 2018 Feb 2;17(2):770-779.

Featured Products

[ACQUITY UPLC I-Class PLUS System <https://www.waters.com/134613317>](https://www.waters.com/134613317)

[Xevo G2-XS QToF Quadrupole Time-of-Flight Mass Spectrometry <https://www.waters.com/134798222>](https://www.waters.com/134798222)

720006493, March 2019

©2019 Waters Corporation. All Rights Reserved.

[Terms of Use](#) [Privacy](#) [Trademarks](#) [Sitemap](#) [Careers](#) [Cookie](#) [Preferenze cookie](#)