

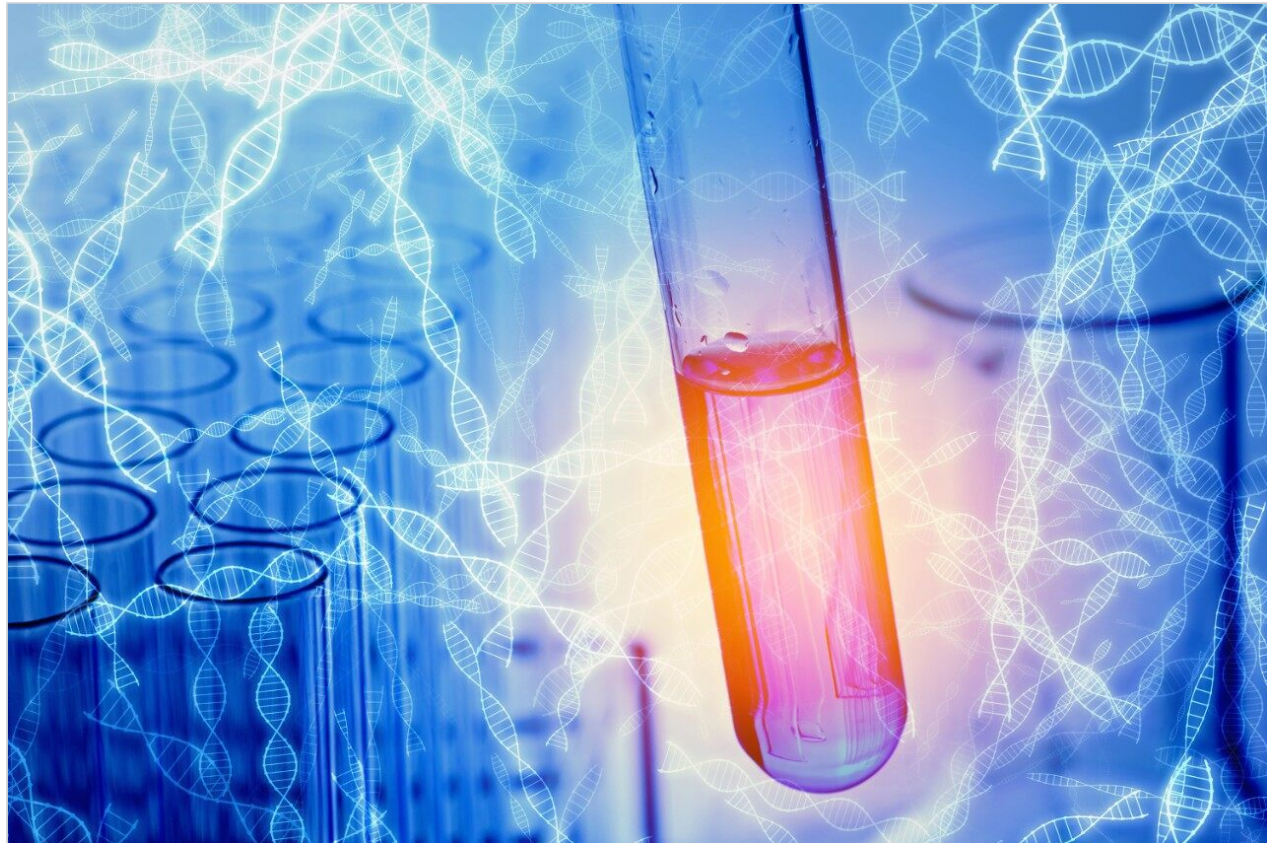
응용 자료

# MS Identification of Trace level Impurities from a Non-MS Compatible Mobile Phase Using ACQUITY UPLC System with 2D Technology by Heart-cutting and Online Sample Concentration

---

Bronsky Gopinadh, Dilshad Pullancheri, Dr. Padmakar Wagh

Waters Corporation



---

## Abstract

In this application note, we are demonstrating how to get the mass information of trace level impurities using online sample concentration. Mass spectral detection of peaks from non-MS compatible buffers is challenging due to non-volatility of mobile phases. The ACQUITY UPLC System with 2D LC Technology configured for heart-cutting which can directly transfer a selected peak from a non-ms compatible chromatographic method to a mass detector for mass spectral analysis with no fraction collection and no redevelopment of the method. Configuring the system for at-column dilution will further give the flexibility of doing online sample concentration which makes it possible to get the mass spectral information for trace level impurities.

### Benefits

- Mass spectral analysis of peaks directly from unmodified non-MS compatible HPLC methods
- Online sample concentration to get better response on second dimension

---

## Introduction

Orthophosphoric acid is often used for better performance on lower wavelength chromatography, but is not mass spectrometry (MS) compatible. To overcome this challenge, alternative MS compatible chromatographic methods need to be developed to make it MS compatible. Furthermore, this MS friendly method doesn't assure or give the confirmation of mass identification of the same peak as observed in the non-MS compatible mobile phase. Two-dimensional liquid chromatography (2D LC) embracing mainly heart-cutting LC offers new opportunities for mass spectral detection of pharmaceuticals.

Heart-cutting 2D LC is an effective way to get mass information from a non-MS compatible mobile phase. It typically transfers one fraction of interest from the first dimension to a trap cartridge for the removal of non-volatile buffer and then transfers it to the second dimension. The instrumentation setup is simple and data analysis is straightforward. A distinct advantage of heart-cutting is the second dimension method run time is independent of the sampling rate from the first dimension; therefore a relatively longer method can be used to increase resolution and sensitivity. These factors are particularly important for trace level analysis. In this application note, we are demonstrating how to get the mass information of trace level impurities using online sample concentration.

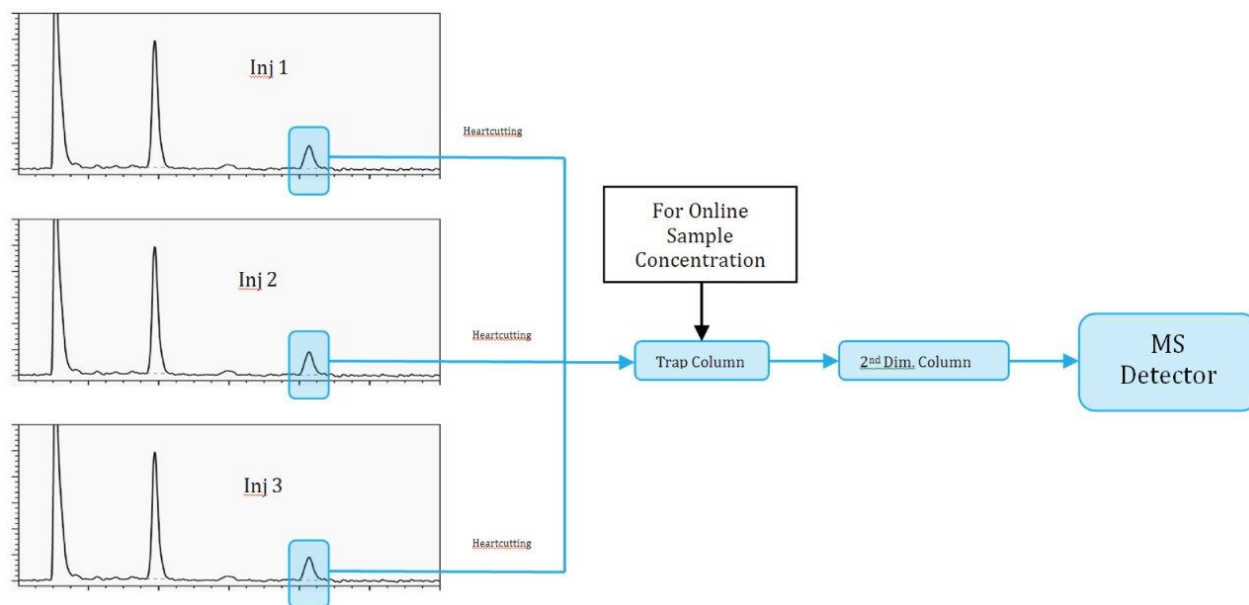


Figure 1. Online sample concentration.

## Experimental

### LC-MS conditions

#### UPLC conditions

#### 1st dimension

Pump:

ACQUITY UPLC QSM

Column:

ACQUITY UPLC

HSS C<sub>18</sub> SB 1.8 μm, 2.1 x 100 mm

(P/N: 186004119)

Detection:

UV @ 210 nm

Column temp.:	40 °C
Sample temp.:	10 °C
Injection volume:	5 µL
Mobile phase A:	0.1% Orthophosphoric acid in water
Mobile phase B:	Acetonitrile
Flow rate:	0.5 mL/min
LC gradient:	Start at 5% B and hold for 3.75 min,  linear ramp to 50% B for 10 min,  and return to initial condition by 12 min
Run time:	15 min
Diluent:	Methanol
Sample concentration:	2.5 mg/mL

## 2nd dimension

Pump:	ACQUITY UPLC BSM
Column:	ACQUITY UPLC  CSH C <sub>18</sub> 1.7 µm, 2.1 x 50 mm  (P/N: 186005296)
Column temp.:	50 °C

Mobile phase A:	Water
Mobile phase B:	Acetonitrile
Flow rate:	0.6 mL/min

### ACD (at column dilution) pump

Mobile phase:	Water
Trap column:	Oasis HLB 2.1 x 30 mm Direct Connect HP

### MS conditions for positive and negative mode:

ESI (+)	ESI (-)
Capillary: 3 KV	Capillary: 2.8 KV
Cone: 40 V	Cone: 40 V
Source temp.: 150 °C	Source temp.: 150 °C
Desolvation temp.: 550 °C	Desolvation temp.: 550 °C
Desolvation gas: 950 L/hr	Desolvation gas: 950 L/hr
Cone gas: 50 L/hr	Cone gas: 50 L/hr

### Data management

Chromatography software: MassLynx v4.1

Steps involved in MS detection of peak of interest from orthophosphoric acid method with 2D LC technology

The non-MS compatible 1D method was run with UV detection.

Just before the peak of interest starts eluting from the ACQUITY UPLC Column, entered in the method as a timed event, the following steps occur:

1. Flow from the first dimension column was diverted to a mixer using a two position switching valve.
2. Flow from the dilution pump was delivered to the mixer which mixes with the first dimension mobile phase diluting the organic composition and takes the analyte to a trap column and retains the analyte to the trap column.
3. Switching valve was turned back to initial position to continue obtaining the first dimension chromatogram while keeping the dilution pump flow on to washout the non-MS compatible mobile phase from the first dimension and for achieving narrow band for eluate on the trap column.

This process was repeated by making multiple first dimension injections and the peak of interest gets concentrated on the trap column. Here the selection of the trap column chemistry is very important, as it should be able to retain all the analyte. After making enough analyte load on the trap column, a second dimension pump with a MS compatible mobile phase was used to elute the analyte from the trap column and subsequently through a second dimension column for mass detection. The Xevo TQ Detector monitors the eluate in full scan mode to collect the full mass spectral information.

To execute these steps in the above protocol, a specific configuration of fluidic connections was made using the two, 2-position, 6-port valves of the ACQUITY UPLC Column Manager.

## Generic Heart-cutting 2D UPLC Configuration

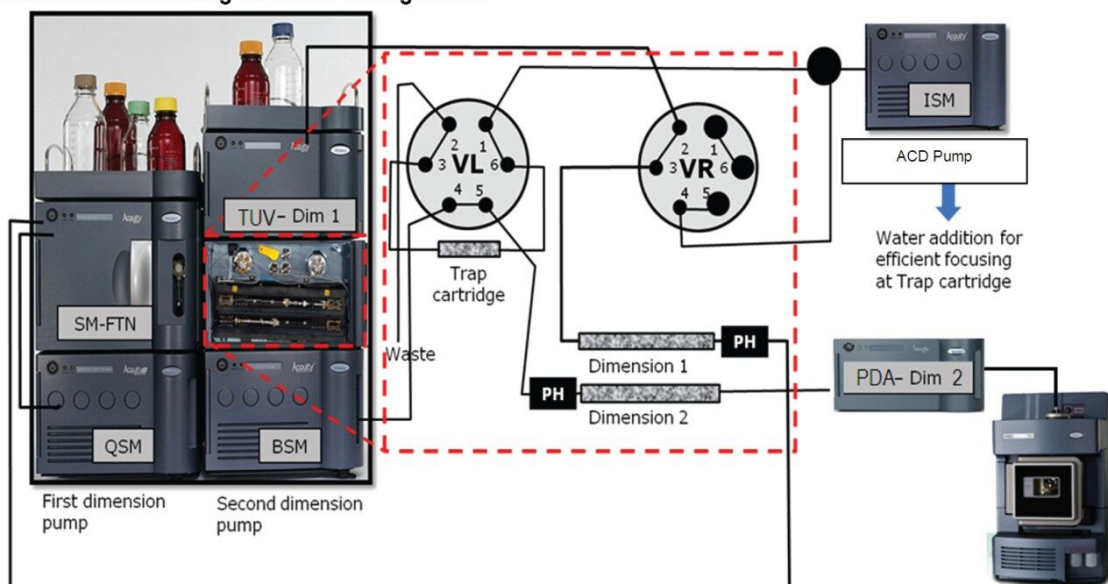


Figure 2. Generic heart-cutting 2D UPLC configuration.

As mentioned, online sample concentration was done by making multiple first dimension injections and heart-cutting the peak of interest from each run and stacking it on the trap column. In this experiment, we are doing a total of three injections each for two peaks of interest. The first two injections will be only to trap the peak of interest on the trap column and the third injection will be a trap and back-flush run.

Figures 3 through 8 show the column manager plumbing and describe the key events associated with various steps in the peak transfer process.

Step 1: Initial condition (Left Valve Position 1, Right Valve Position 1)

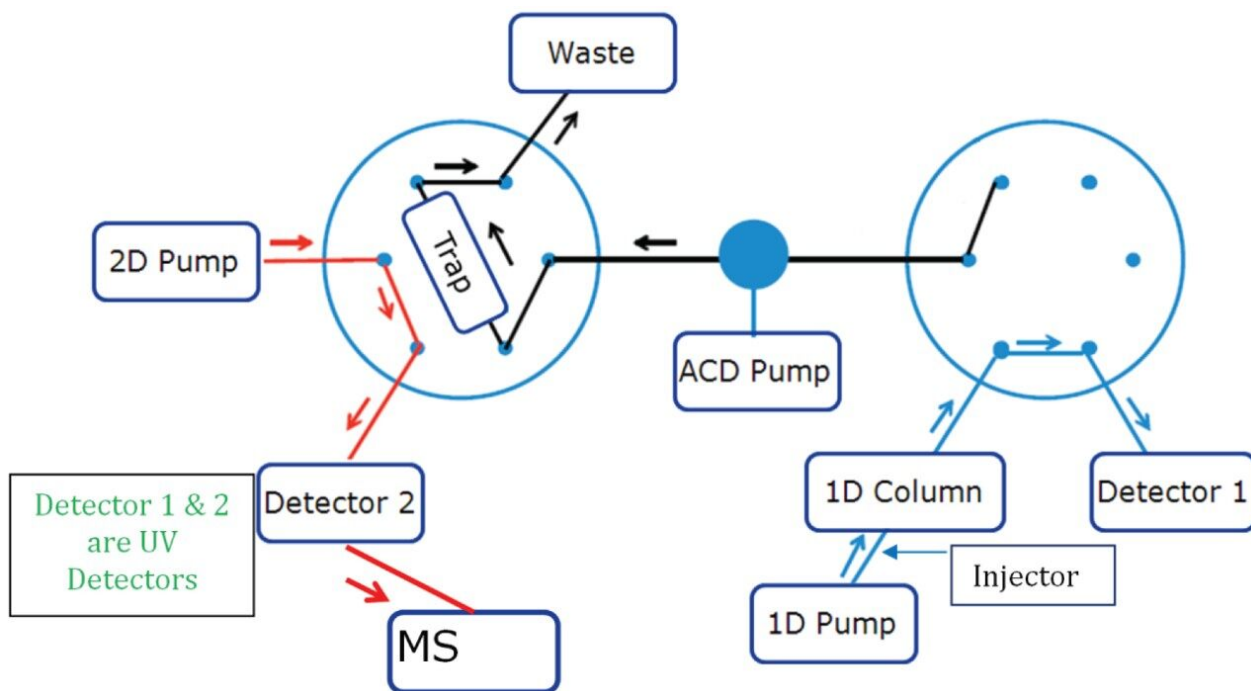


Figure 3. Step 1. The flow from the Alpha pump (non-volatile mobile phase) is flowing through the first dimension column. Sample is injected and the 1D method is run with UV detection (blue flow path). The ACD pump flows through the mixer, towards the trap column (black path) and then out to waste. Beta pump flows through the equilibrated UPLC column (red path), then to second dimension detectors.

Step 2: Trapping of peak of interest (Left Valve Position 1, Right Valve Position 2)

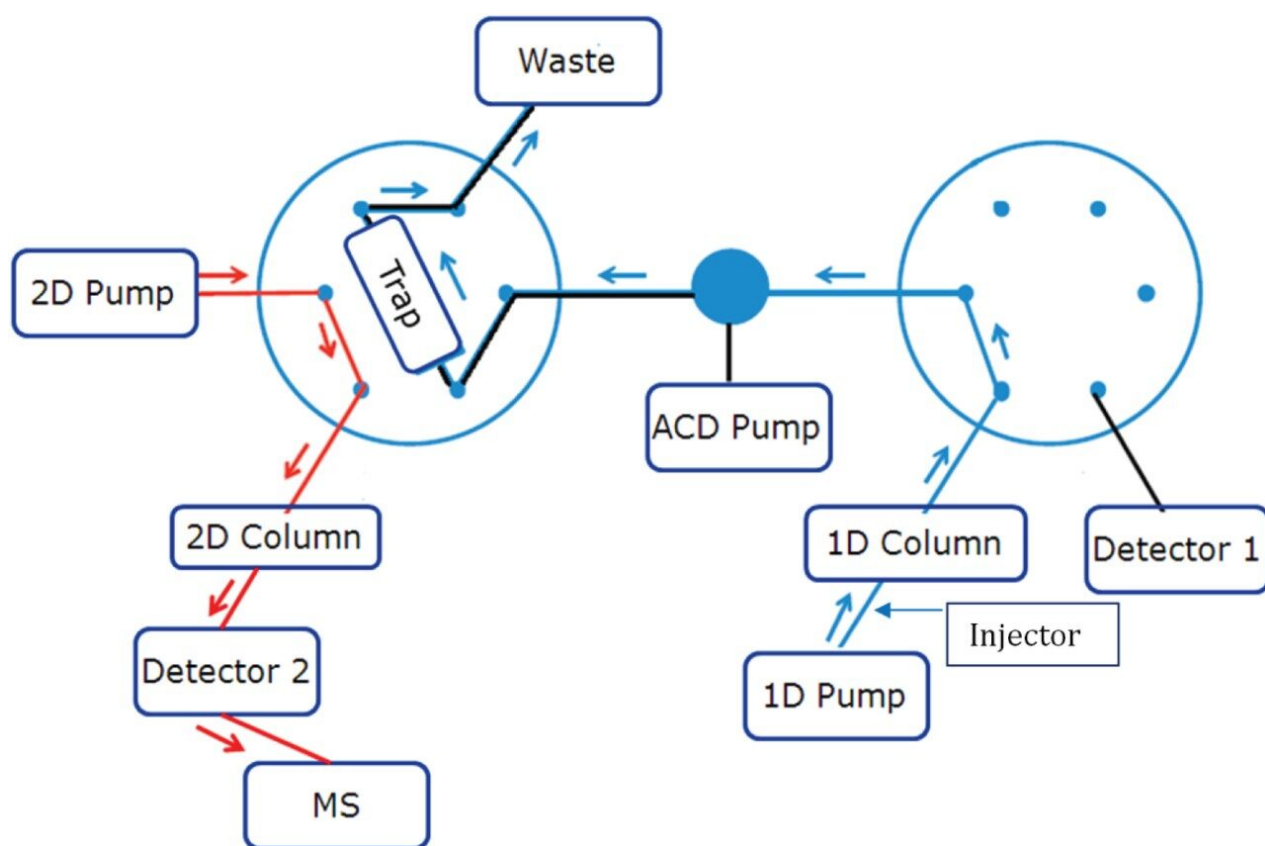


Figure 4. Step 2. When the desired peak begins to elute, a timed event, the right valve turns to position two. The Alpha pump flow is diverted to the mixer and combined with the flow from ACD pump and pushing the peak of interest onto the Trap column. The reduced organic composition of the diluted mobile phase facilitates the trapping of the peak of interest on the Trap column. Second dimension flow path is not affected during this step.

Step 3: Washing out the 1st dimension Mobile Phase (Left Valve Position 1, Right Valve Position 1)

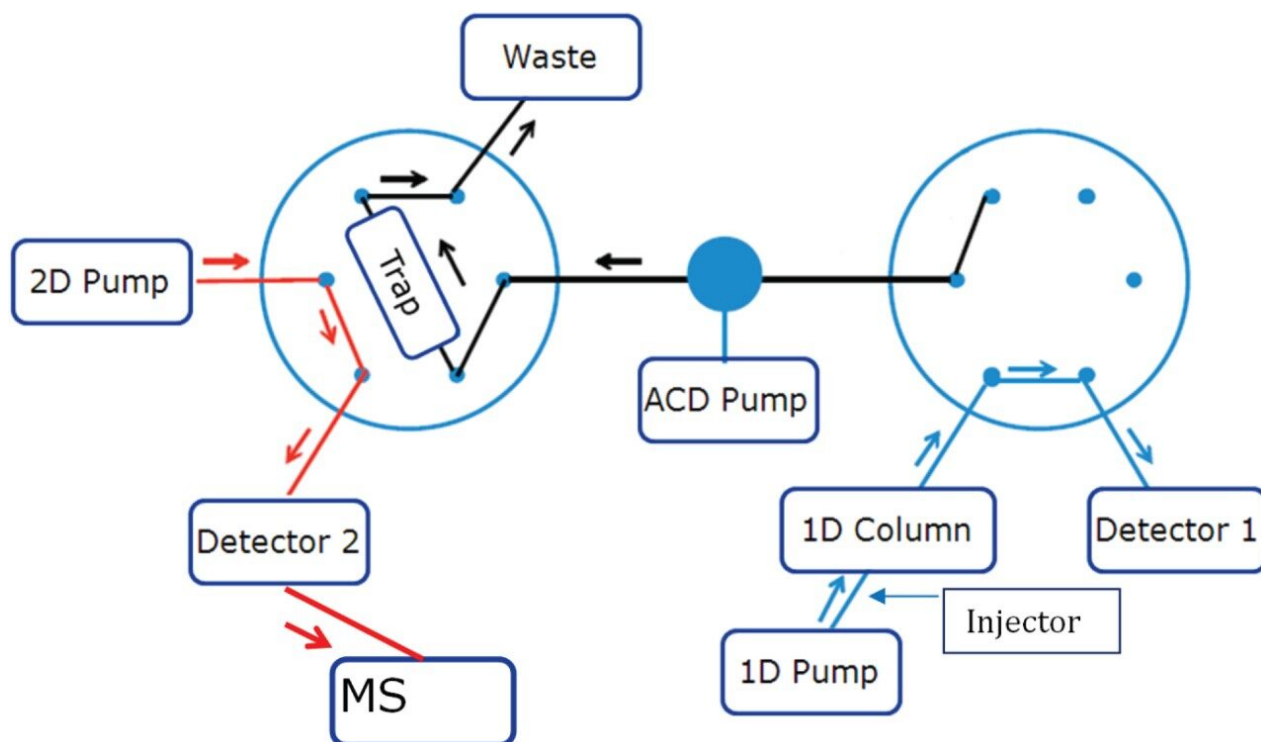
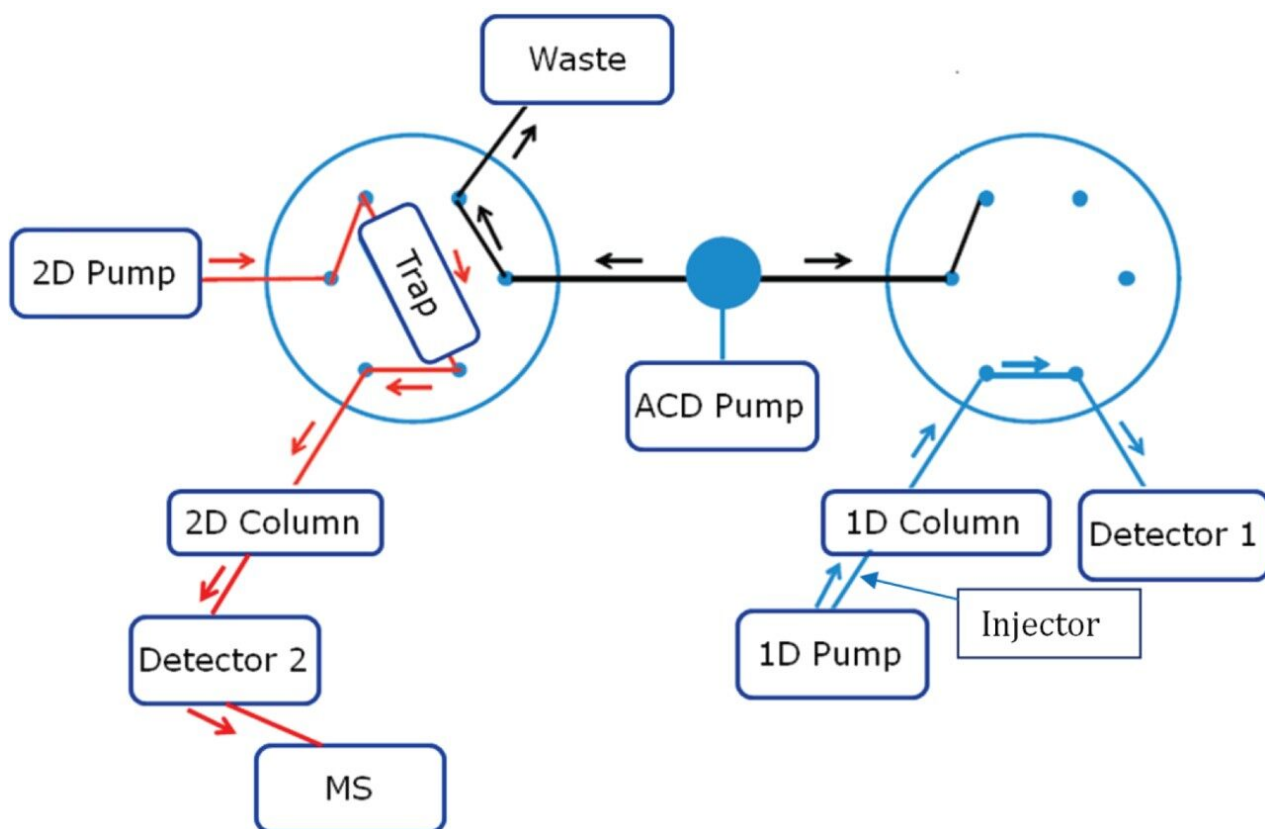


Figure 5. Step 3. The right valve has been turned back to position 1 after cutting of the peak of interest so that the first dimension chromatogram is recorded on the detector 1. Meanwhile the flow from the ACD pump is kept on and is washing out the non-ms compatible mobile phase from the trap column. This also equilibrates and focuses the peak of interest on the trap column.

Steps 1 through 3 are repeated by making injection on the first dimension column and the peak of interest is diverted and stacked on the trap column.

The third injection, which was going to be the trap and elute run was done and the steps from 1–3 are repeated as same as the first two injections. After giving enough time for the ACD pump to remove the non-MS compatible mobile phase from the first dimension and to equilibrate and focus the peak of interest from three different runs on the trap column, the following steps were used to back-flush the concentrated peak from the trap column to a second dimension column with a MS compatible mobile phase pumped through the 2D pump.

Step 4: Back-flush elution from trap column to second dimension column (Left Valve Position 2, Right Valve Position 1)



*Figure 6. Step 4. When the left valve is turned to position 2, the trap column is completely isolated from the first dimension and dilution pump flow path and connected in reverse direction so that the increasing organic concentration from the second dimension pump elutes out everything trapped in the trap column to a second dimension column.*

After this step, the complete gradient program is passed through the trap column to elute the trapped components to second dimension separation column with a MS compatible mobile phase pumped by the second dimension pump.

QSM (1st dimension) A: Buffer B: ACN				BSM (2nd dimension) A: Water B: ACN			ISM (ACD) water	CM-A	
Time	Flow	A	B	Flow	A	B	Flow	Left valve	Right valve
0	0.5	95	5	0.2	80	20	0.2	1	1
3.75	0.5	95	5				0.2		
7							0.2		
8							2		
9.5*								1	2
9.55*								1	1
10	0.5	50	50						
12	0.5	95	5						
15	0.5	95	5						

Table 1. An example gradient table with pump parameters and valve events for the trap only method. Asterisks (\*) denote the start and stop time of the heart-cut window.

QSM (1st dimension) A: Buffer B: ACN				BSM (2nd dimension) A: Water B: ACN			ISM (ACD) water	CM-A	
Time	Flow	A	B	Flow	A	B	Flow	Left valve	Right valve
0	0.5	95	5	0.2	80	20	0.2	1	1
3.75	0.5	95	5	0.2	80	20			
7							0.2		
8							2		
9.5*								1	2
9.55*								1	1
10	0.5	50	50	0.2	80	20			
12	0.5	95	5						
15	0.5	95	5						
18				0.2	80	20			
19				0.6	80	20			
20							2	2	1
21							0.2		
22				0.6	80	20			
28				0.6	20	80			
28.5				0.2	80	20			

Table 2. An example gradient table with pump parameters and valve events for trap and elute method. Asterisks (\*) denote the start and stop time of the heart-cut window.

## At-column dilution (ACD) and trap column

During a 'heart-cut', a specific volume of the non-MS compatible mobile phase, containing the peak of

interest, was transferred to a trap column. If that 'cut' contains a high percent of organic, the analyte will be washed away through the trap column due to poor retention. By adding an additional aqueous dilution flow to the 'cut' volume prior to the trap column, the organic composition can be significantly reduced. A proper selection of trap column chemistry is very important to trap peaks which are eluting at higher organic concentrations.

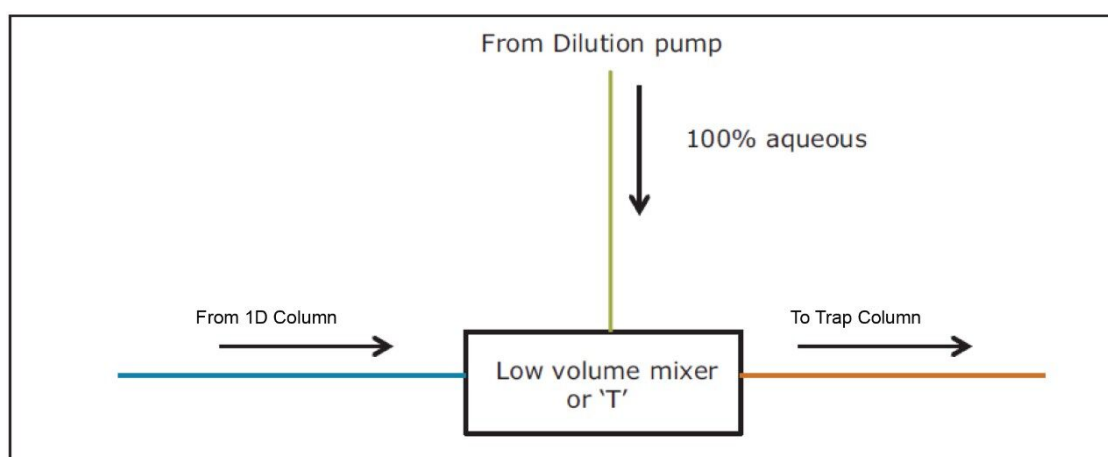
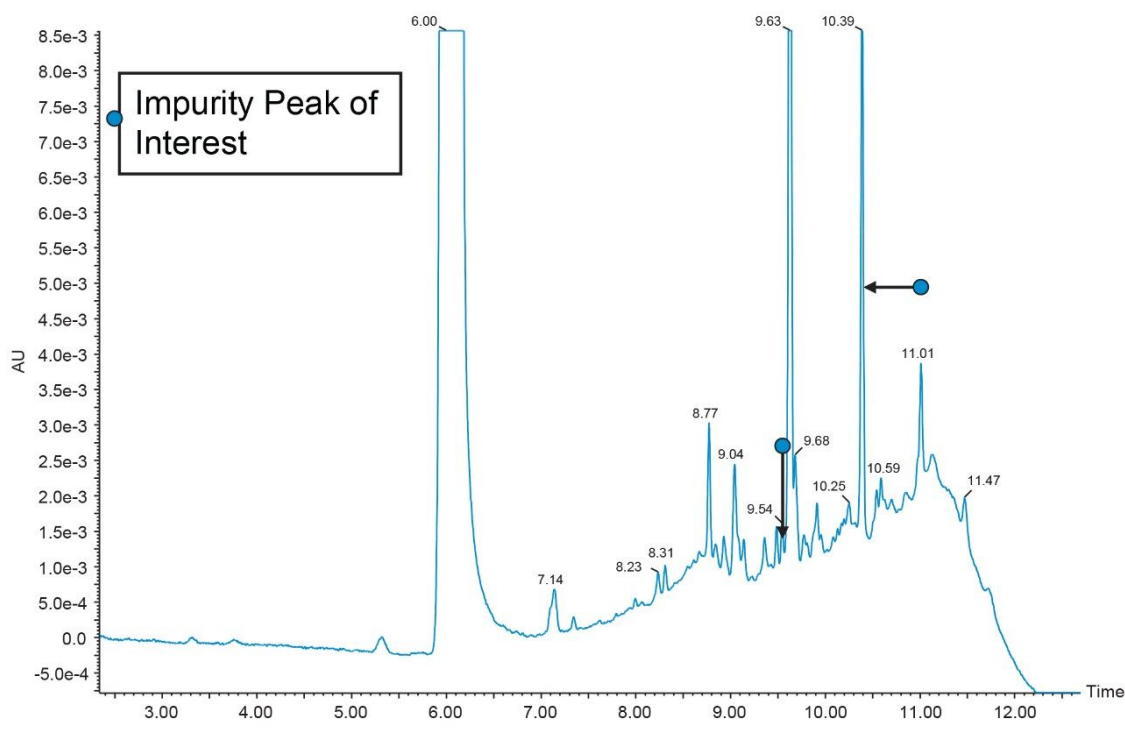


Figure 7. At-column dilution (ACD) and trap column.

---

## Results and Discussion

A repeated run of the first dimension method is done to confirm the RT of the peaks to be analyzed on second dimension configured with Mass Spectrometer.



*Figure 8. Initial first dimension chromatogram with peak list. The peak which needs to be sent to the mass spectrometer is shown using the arrow.*

The RT window of the peak of interest (shown in Figure 8) has been noted and a two inlet method are made, Inlet method 1 for heart-cutting and trap, inlet method 2 for heart-cut, trap, and black flush elution. Two runs are made with inlet method 1 and a third run with inlet method 2 in a sequence.

After checking the reproducibility data of the heart-cut from first dimension (Figure 9), the analysis is done by injecting blank in the first dimension with the same experimental procedure mentioned above. The second dimension UV chromatogram of both blank and sample injection is used to compare and identify the peak of interest (Figure 11).

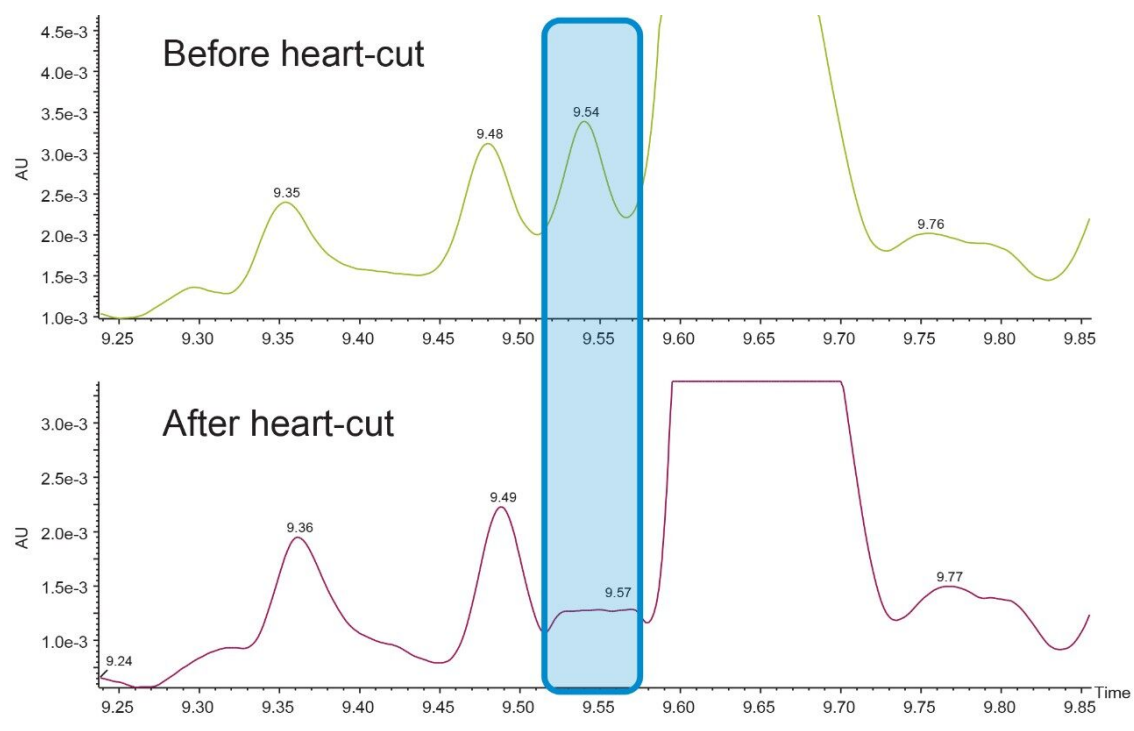


Figure 9. First dimension UV chromatograms before and after heart-cut.

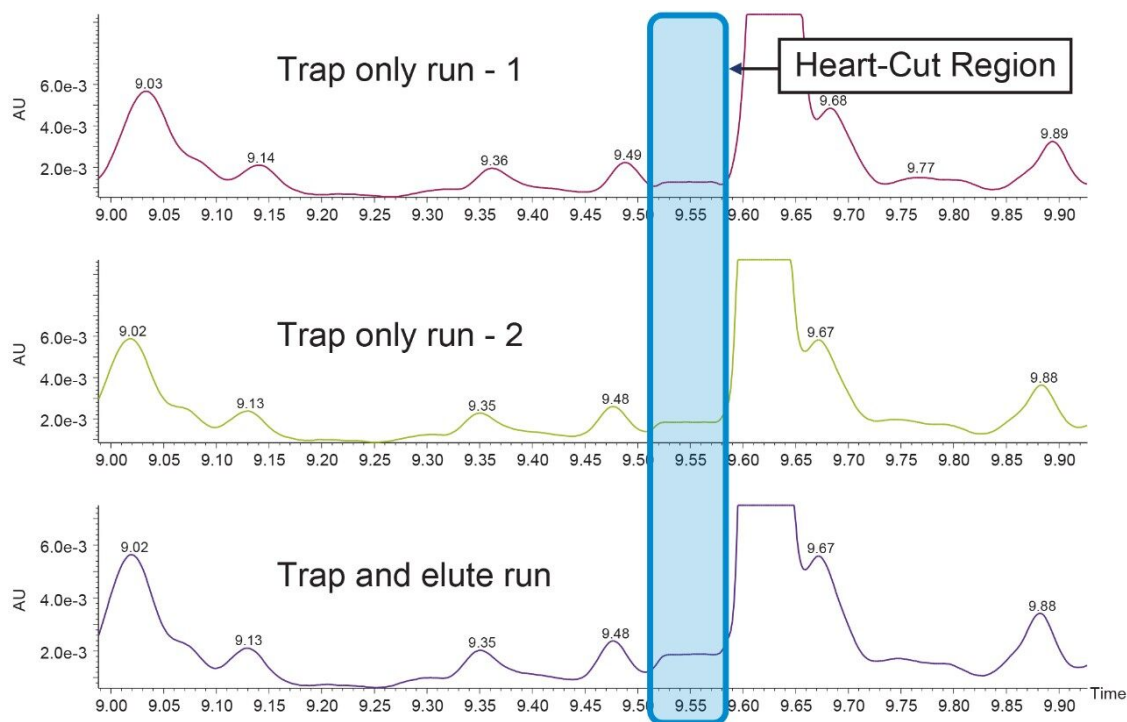


Figure 10. Three chromatograms showing the reproducibility data of heart-cut in three different injections.

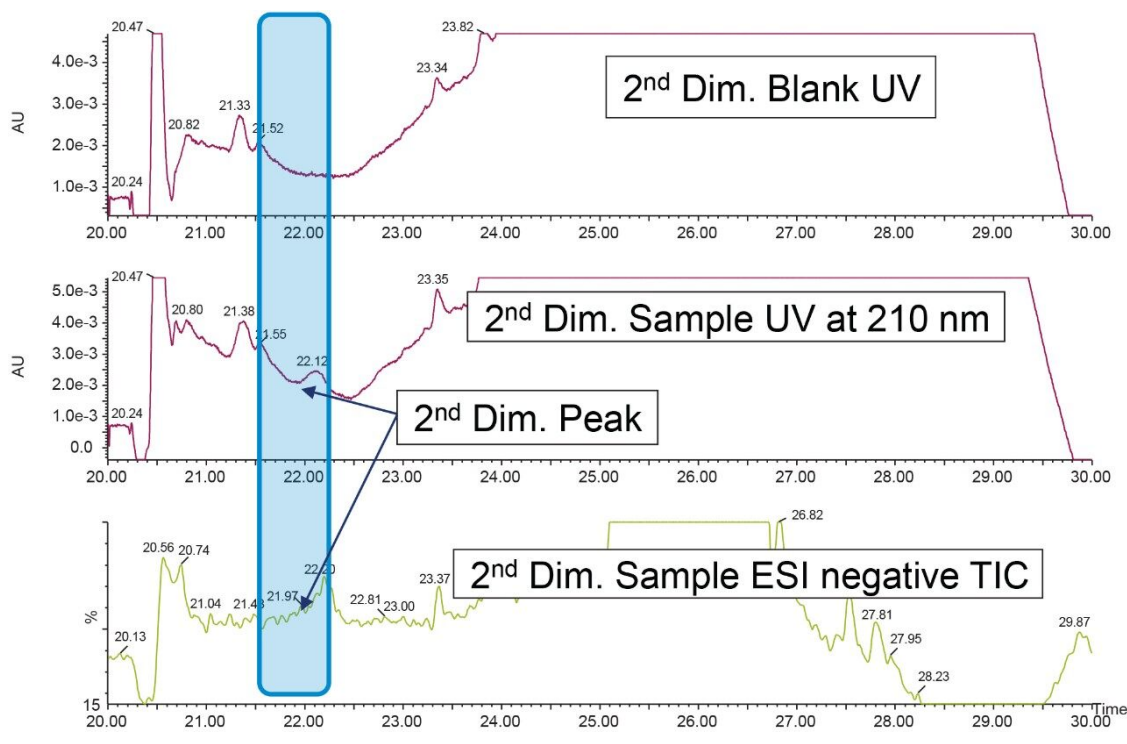


Figure 11. Identification of the peak of interest by blank comparison of the second dimension UV chromatograms. The MS TIC peak at the same RT is identified and the MS spectrum is obtained.

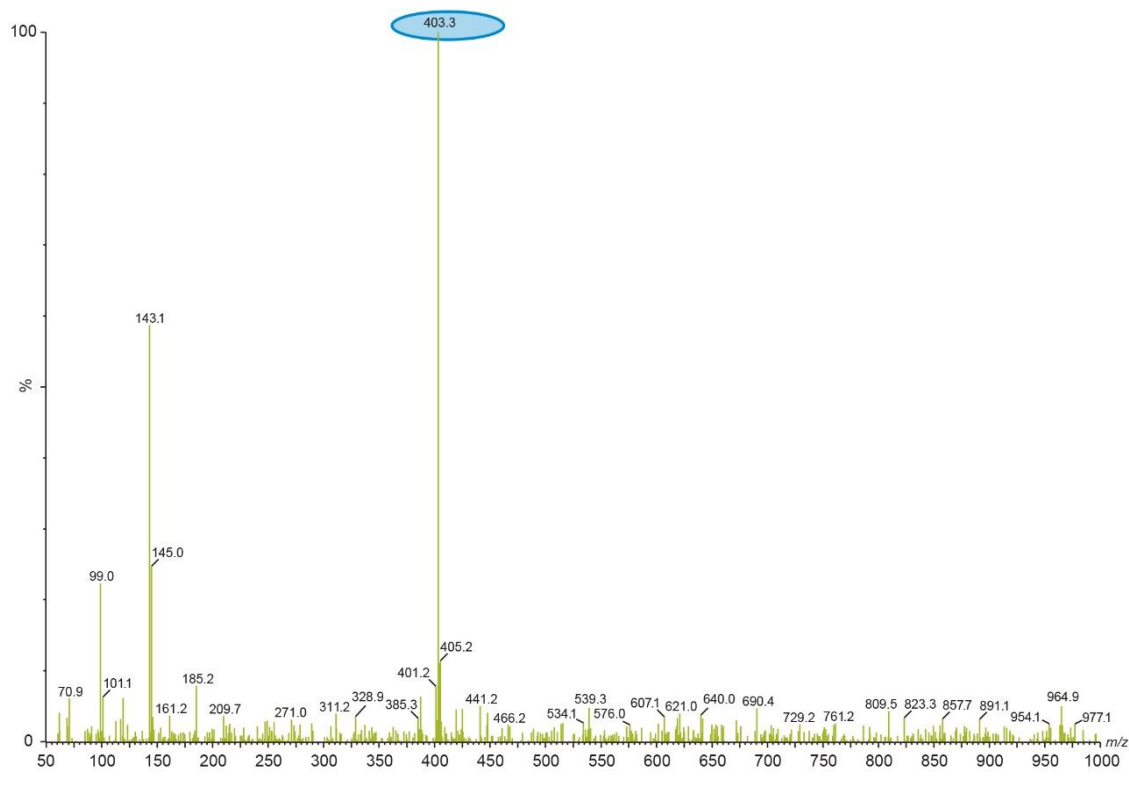


Figure 12. MS spectrum of peak of interest at UV retention time of 9.54 minutes.

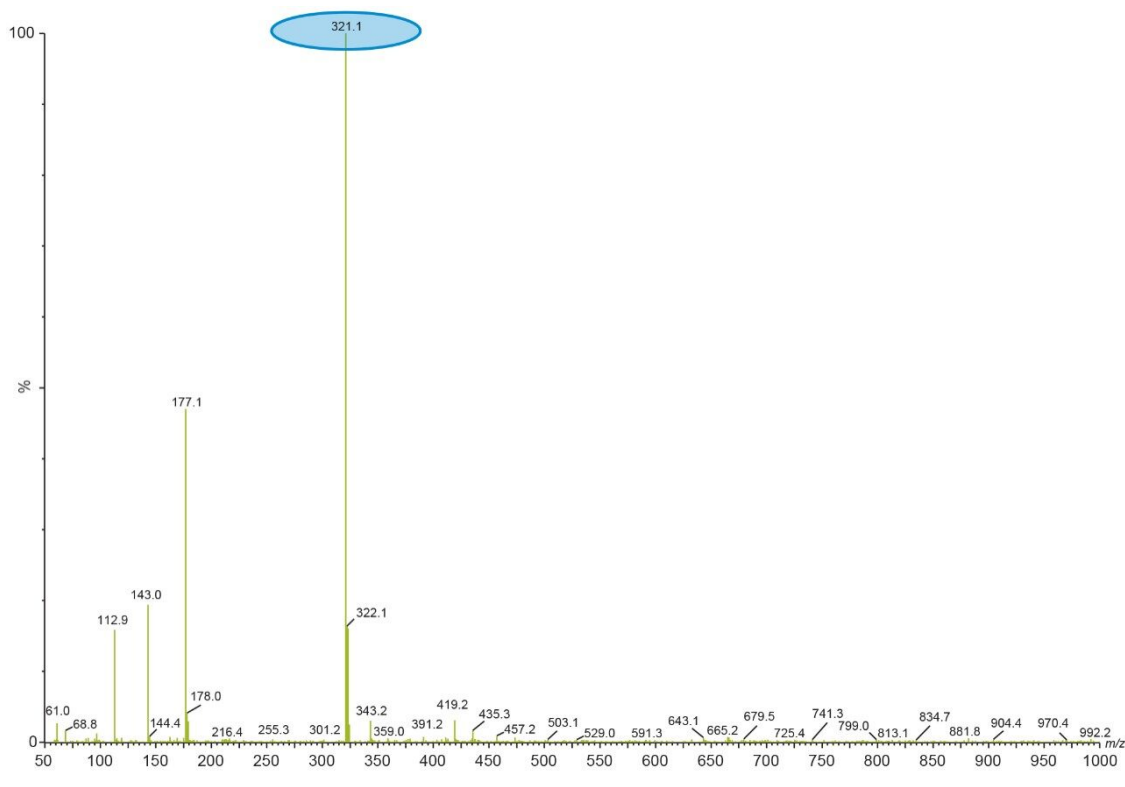


Figure 13. MS spectrum of peak of interest at UV retention time of 10.39 minutes.

## Conclusion

- Mass spectral detection of peaks from non-MS compatible buffers is challenging due to non-volatility of mobile phases.
- The ACQUITY UPLC System with 2D LC Technology configured for heart-cutting which can directly transfer a selected peak from a non-ms compatible chromatographic method to a mass detector for mass spectral analysis with no fraction collection and no redevelopment of the method.
- Configuring the system for at-column dilution will further give the flexibility of doing online sample concentration which makes it possible to get the mass spectral information for trace level impurities.

---

## References

1. Root, Daniel S., Wheat, Thomas E., McConville, Patricia. Routine MS Detection for USP Chromatographic Methods. Waters Corporation. 720005306EN. February 2015.

---

## Featured Products

ACQUITY UPLC Systems with 2D LC Technology <<https://www.waters.com/10203030>>

Xevo TQD Triple Quadrupole Mass Spectrometry <<https://www.waters.com/134608730>>

MassLynx MS Software <<https://www.waters.com/513662>>

### Available for Purchase Online

ACQUITY UPLC HSS C18 SB Column, 100Å, 1.8 µm, 2.1 mm X 100 mm <  
<https://www.waters.com/waters/partDetail.htm?partNumber=186004119>>

ACQUITY UPLC CSH C18 Column, 130Å, 1.7 µm, 2.1 mm X 50 mm <  
<https://www.waters.com/waters/partDetail.htm?partNumber=186005296>>

720006238, March 2018