

Application Note

Analysis of Fingerprints by Desorption Electrospray Ionization Mass Spectrometry Imaging

Emmanuelle Bardin, Emmanuelle Claude, Zoltan Takats

Waters Corporation, Imperial College

This is an Application Brief and does not contain a detailed Experimental section.

Abstract

This application brief demonstrates the ability of DESI-MSI to determine the gender of an individual from their fingerprint.

Benefits

Analysis of fingerprints using non-imaging DESI-MS coupled to a QToF instrument (Xevo G2-XS) for gender prediction of donors.

Introduction

Over the past decade, mass spectrometry imaging (MSI) has been used increasingly by researchers to

investigate the distribution of metabolites, drugs, peptides, and proteins at tissue surfaces. The chemical composition of fingerprints is dependent on glandular secretions, excretion of ingested substances, and exposure to environmental chemicals. Analysis of fingerprints may thus provide native and environmental information about a donor, which is of particular interest to forensic scientists.^{1,2}

Matrix-assisted laser desorption ionization (MALDI) mass spectrometry has been widely applied to the analysis of fingerprints. Bradshaw et al. were able to assess the presence of blood by detecting the ions from haeme and haemoglobin.³ Gender was predicted with 85% accuracy by comparing protein and peptidic profiles.⁴ Caffeine, fatty acids, and amino acid detection has also been reported.¹ MALDI used in imaging mode (MALDI-MSI) allowed investigation of spatial variations in the chemical composition of finger marks; additionally, localization of sweat pores has been achieved.¹

To a lesser extent, desorption electrospray ionization mass spectrometry (DESI-MS) has been used, and lipidic endogenous compounds – as well as spiked exogenous drugs and explosives – have been detected in fingerprints.⁵

Recently, there has been a significant increase in the application of DESI because this soft ionization technique can be performed under ambient environmental conditions. Furthermore, it requires little to no sample preparation and is minimally invasive, which makes it suitable for direct tissue analysis. DESI-MSI is compatible with both the Waters SYNAPT G2-Si and Xevo G2-XS Mass Spectrometers.



Results and Discussion

Two men and two women provided each six fingerprints. These were collected at the same time, from different fingers, on Polysine glass slides (Thermo Fisher Scientific). DESI analyses were performed using methanol–water (95/5 v/v) at a flow rate of 0.7 $\mu\text{L}/\text{min}$, with 1 $\mu\text{g}/\text{mL}$ raffinose as a lockmass compound and 4 bars of N_2 as nebulizing gas. The samples were analyzed in profiling mode, following a line drawn crossing the fingerprint (Figure 1), or in imaging mode, with a pixel definition of 100 μm . Combined spectra were lockmass-corrected, background subtracted, and aligned for multivariate statistical analysis.



Figure 1. DESI analysis on a fingerprint deposited on a microscope glass slide.

Profiling experiments by DESI on multiple fingerprints were carried out in positive and negative ionization mode. Figure 2 shows the total ion count (TIC) of the line of acquisition across one of the fingerprints in positive mode. The corresponding MS spectrum is displayed in Figure 3 showing the presence of mono, di, and triglycerides, as well as phospholipids. In negative ionization mode, fatty acids, cholesterol sulfate, and phospholipids were detected (Figure 4).

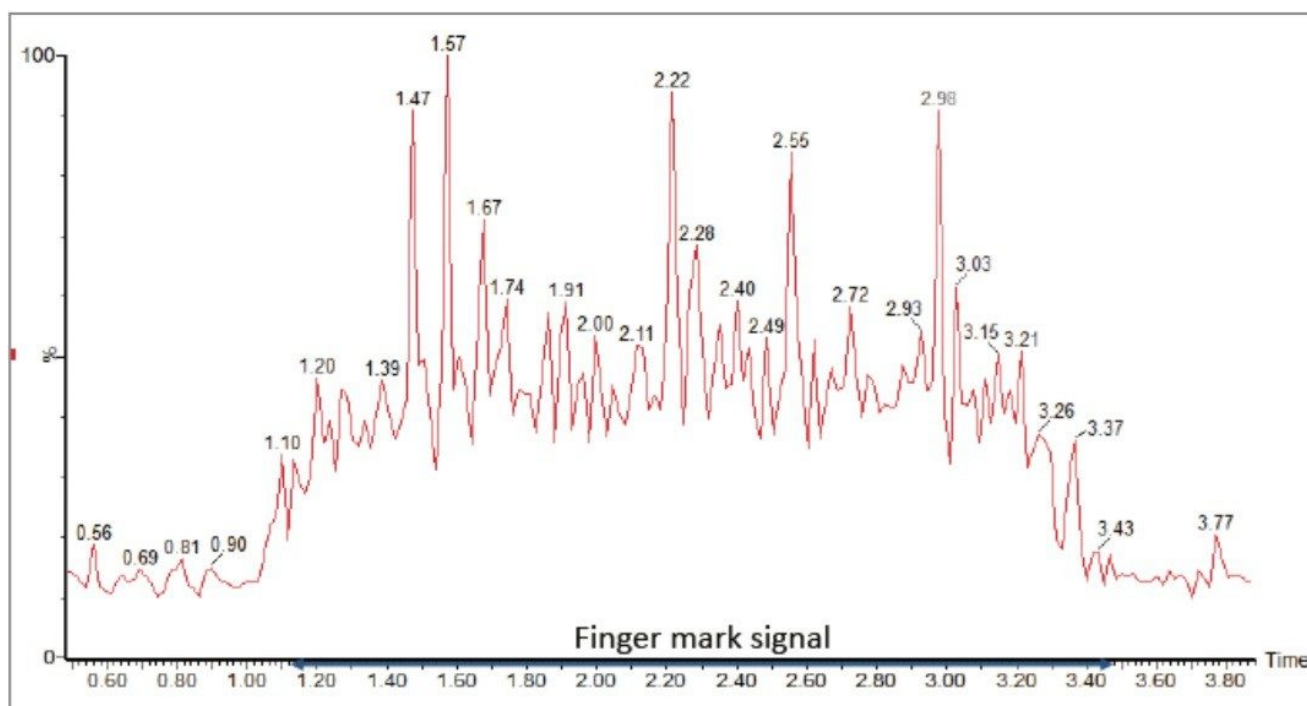


Figure 2. TIC observed in positive mode.

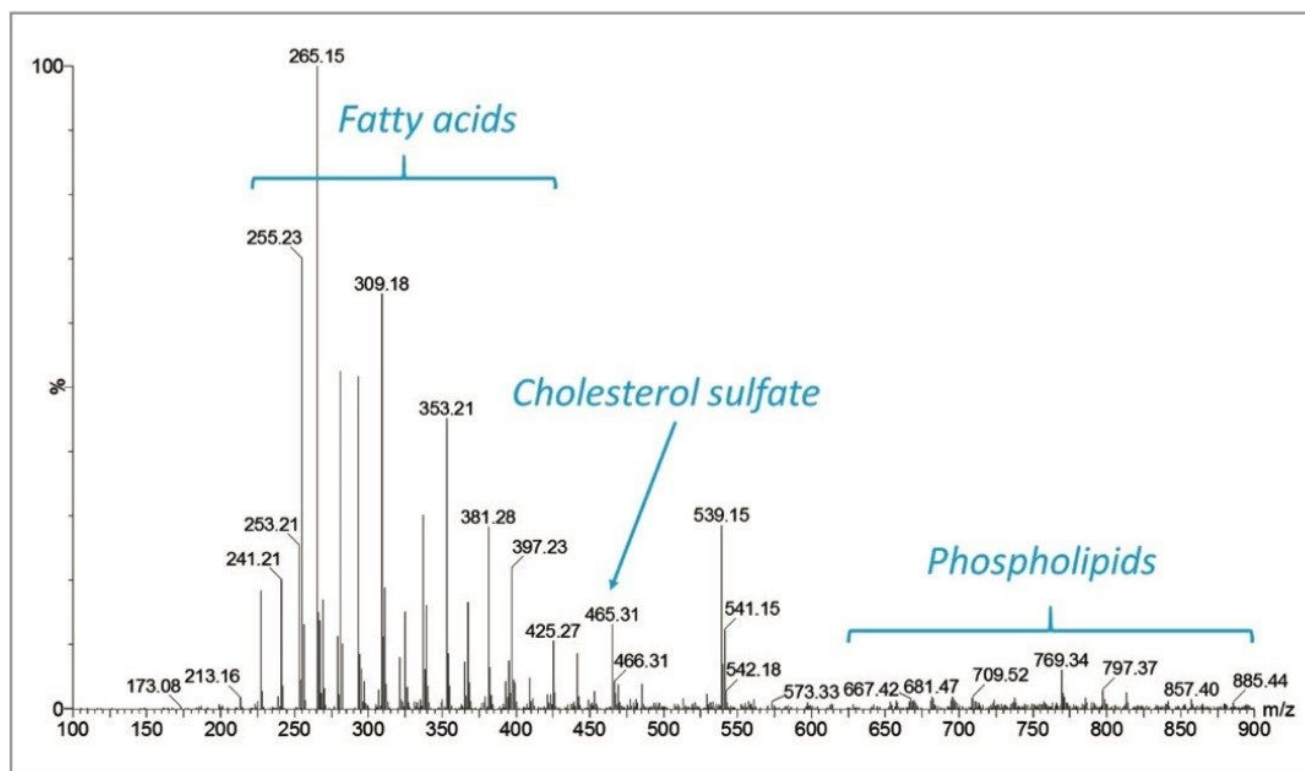


Figure 3. Mass spectrum of a fingerprint in positive mode with lockmass correction and background subtraction.

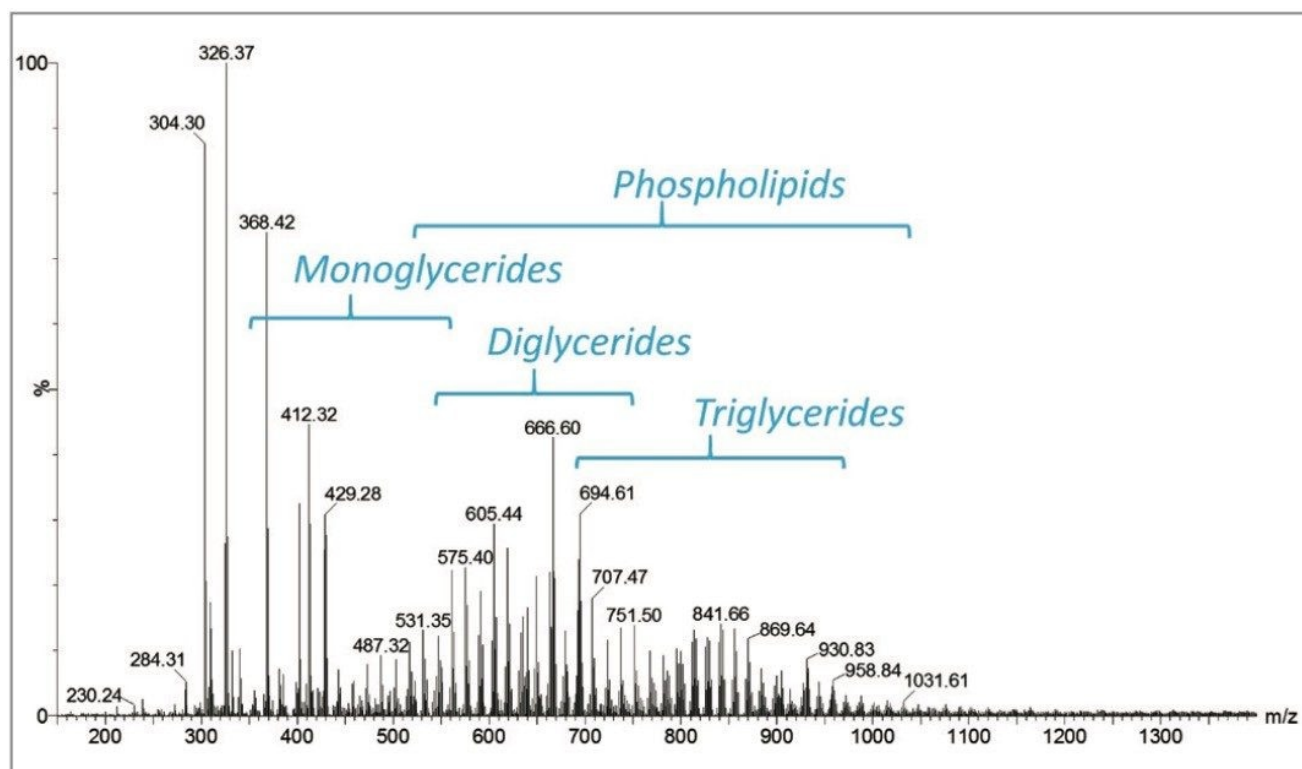


Figure 4. Mass spectrum of a fingerprint in negative mode with lockmass correction and background subtraction.

Principal Component Analysis (PCA) allowed a good separation of male and female subjects, using only the two first principal components (Figure 5). The prediction of the donors' gender taking 20% of the dataset out using a PCA-LDA (Linear Discriminant Analysis) model was 96% accurate in negative mode (Table 1) and 100% in positive mode (Table 2).

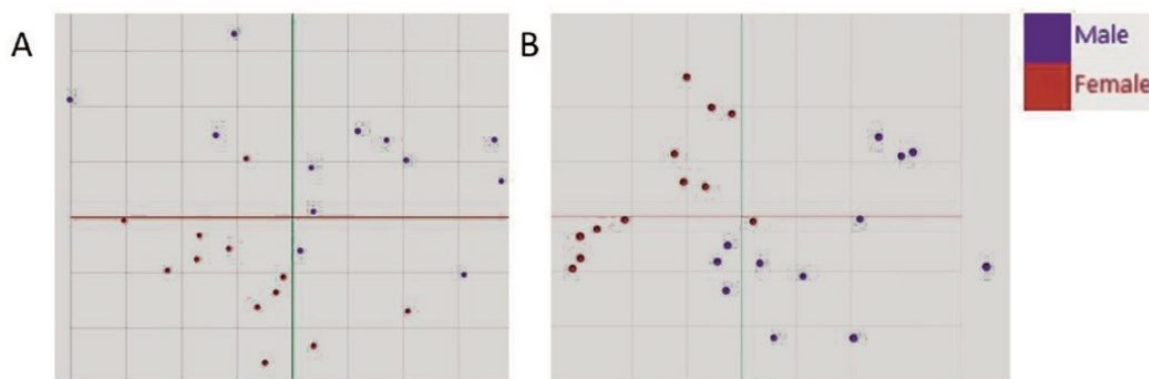


Figure 5. PCA in A) negative mode and B) positive mode, showing differentiation between male (blue) and female (red) samples.

Table 1

Gender prediction: 96%	Female	Male
Female	100%	0%
Male	8%	92%

Table 1. Cross validation using a PCA-LDA model in negative mode.

Table 2

Gender prediction: 100%	Female	Male
Female	100%	0%
Male	0%	100%

Table 2. Cross validation using a PCA-LDA model in positive mode.

Figure 6 displays ion images of molecules detected in either ionization mode, demonstrating the structural features of the fingerprint, which can be used for the identification of the donor.

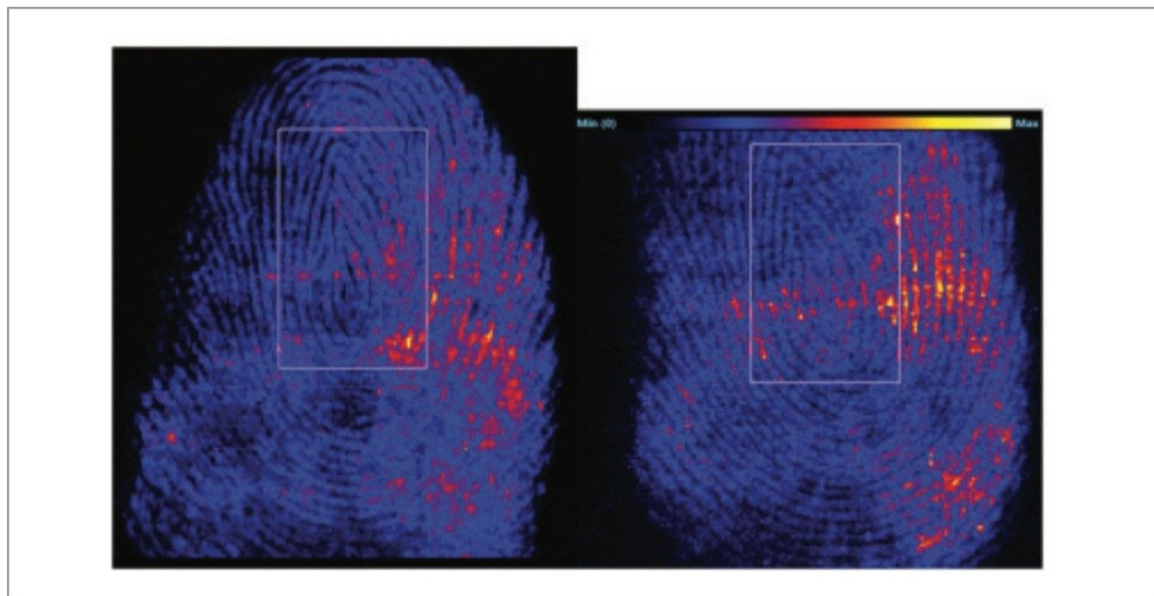


Figure 6. Fingerprint image with negative ion m/z 265.15 on the left and positive ion m/z 326.38 on the right acquired on 2 different samples collected from the same finger.

Conclusion

DESI-MS using the Waters Xevo G2-XS QToF together with a Prosolia DESI 2D source allows the ambient, direct, and precise analysis of fingerprints. The detection of a great number of compounds belonging to various classes of lipid enables lipid-based investigations. Lipidomic profiles obtained here allowed the prediction of the donors' gender.

The advantages of this DESI-MSI include:

- Minimum sample preparation required prior to DESI-MSI analysis, with no need to apply matrix (as required in MALDI imaging, for example).

- Measurements can be performed under ambient environmental conditions.
- DESI-MSI is a non-destructive technique that allows additional analyses of the same sample.
- Good analytical sensitivity for a wide range of molecules.

References

1. Francese, S., et al., *Beyond the ridge pattern: multi-informative analysis of latent fingerprints by MALDI mass spectrometry*. Analyst, 2013. 138(15): p. 4215–28.
2. Girod, A., R. Ramotowski, and C. Weyermann, *Composition of fingerprint residue: a qualitative and quantitative review*. Forensic Sci Int, 2012. 223(1–3): p. 10–24.
3. Bradshaw, R., et al., *Direct detection of blood in fingerprints by MALDI MS profiling and imaging*. Sci Justice, 2014. 54(2): p. 110–7.
4. Ferguson, L.S., et al., *Direct detection of peptides and small proteins in fingerprints and determination of sex by MALDI mass spectrometry profiling*. Analyst, 2012. 137(20): p. 4686–92.
5. Ifa, D.R., et al., *Forensic applications of ambient ionization mass spectrometry*. Anal Bioanal Chem, 2009. 394(8): p. 1995–2008.

Featured Products

[Xevo G2-XS QToF Quadrupole Time-of-Flight Mass Spectrometry <https://www.waters.com/134798222>](https://www.waters.com/134798222)

[Mass Spectrometry Imaging <https://www.waters.com/134833481>](https://www.waters.com/134833481)

720005884, July 2018

©2019 Waters Corporation. All Rights Reserved.

[Terms of Use](#) [Privacy](#) [Trademarks](#) [Sitemap](#) [Careers](#) [Cookies](#) [Cookie Preferences](#)