

## Guidelines for the Determination of Compound Recovery on the Waters AutoPurification System

---

Jo-Ann M. Jablonski, Andrew J. Aubin

Waters Corporation



---

## Abstract

This application note discusses the guidelines for the determination of compound recovery on Waters AutoPurification System.

---

## Introduction

Whether target compounds are isolated from naturally-occurring sources or chemically synthesized in multi-step strategies, the purification of intermediates and products, with high yield and purity, is crucial for the efficient completion of isolation protocols. Maximum compound recovery at each process step ensures a fast turnaround time and streamlines the overall product purification workflow. Although the calculation of recovery on a preparative chromatography system provides useful information about the compound synthesis and isolation strategy, several factors must be considered for accurate determination of sample yield. Factors which impact sample recovery include: system operating parameters, fraction collection parameters, compound peak shape, and the robustness of the analytical technique employed by the scientist performing the experiments. Any one of these elements, whether examined alone or in combination, may affect the compound recovery result. Guidelines for the determination of compound recovery on the Waters AutoPurification System are specifically discussed in this application note, but the fundamental principles for data acquisition and the accurate calculation of sample yield can be applied to any chromatographic system.

---

## Experimental

### Conditions

Analytical column:	XBridge BEH C <sub>18</sub> , 4.6 x 50 mm, 5 µm (p/n 186003113)
Analytical flow rate:	1.46 mL/min

Prep column:	XBridge BEH C <sub>18</sub> , OBD Prep, 19 x 50 mm, 5 µm (p/n 186002977)
Prep flow rate:	25 mL/min
Mobile phase A:	0.1% formic acid in water
Mobile phase B:	Methanol, neat
Weak wash:	95% Water: 5% Methanol
Strong wash:	95% Acetonitrile: 5% Water
Makeup solvent:	Methanol, neat
Cone voltage:	30 V
Probe temp.:	600 °C
Ionization mode:	ES+, centroid
Sampling frequency:	10 Hz
Scan range:	100–600 amu
Wavelength:	254 nm
Gradients and injection volumes:	as noted in figures
Sample:	Acetaminophen, 10.03 mg/mL

## Instrumentation

Waters AutoPurification System:	2545 Binary Gradient Module, 2767 Sample Manager, System Fluidics Organizer, 8–30 mL
---------------------------------	--

Flow Splitter, two 515 HPLC pumps, 2998  
Photodiode Array Detector, SQ Detector 2;  
controlled by MassLynx Software



*Figure 1. The Waters AutoPurification System.*

## Procedure

Maximizing target compound recovery in product isolation reduces the time required to generate sufficient material for subsequent experiments, decreases solvent usage, and liberates personnel to perform other tasks to yield improvement in overall process efficiency. The chromatographic system must be configured properly and performing optimally before any compound isolation can commence. Even with a perfectly tuned system, however, several ancillary factors influence the calculation of sample recovery which include, but are not limited to, sample separation, column choice, peak shape, injection volume, and the quality of chemist's analytical technique.

---

## Results and Discussion

### Guidelines for the determination of compound recovery

NOTE: This procedure was performed to demonstrate the calculation of compound recovery during the isolation process. All values are for illustrative purposes only and are not intended to provide system specifications. This protocol may be modified for use with a different sample solution, mass detector, column, or flow rate; however, the principles outlined remain constant irrespective of these changes.

## 1. Tested system performance

From the MassLynx Help window located in the AutoPurification System software, select the "Search" tab, then type "testing system performance" in the keyword dialog box. Select this topic from the list and then click "Display". If the system configuration has been changed, that is, the plumbing, tubing, or flow rate is different from the time when last used, then the pressure balancing and timing tests must be performed. If the timing test is completed, perform the chromatography performance test with the dye solution (p/n 716000765) to assess the accuracy of fraction collection. The resulting chromatograms should be similar to those shown in Figure 2. Adjust the fraction collection parameters, if necessary, to achieve comparable results.

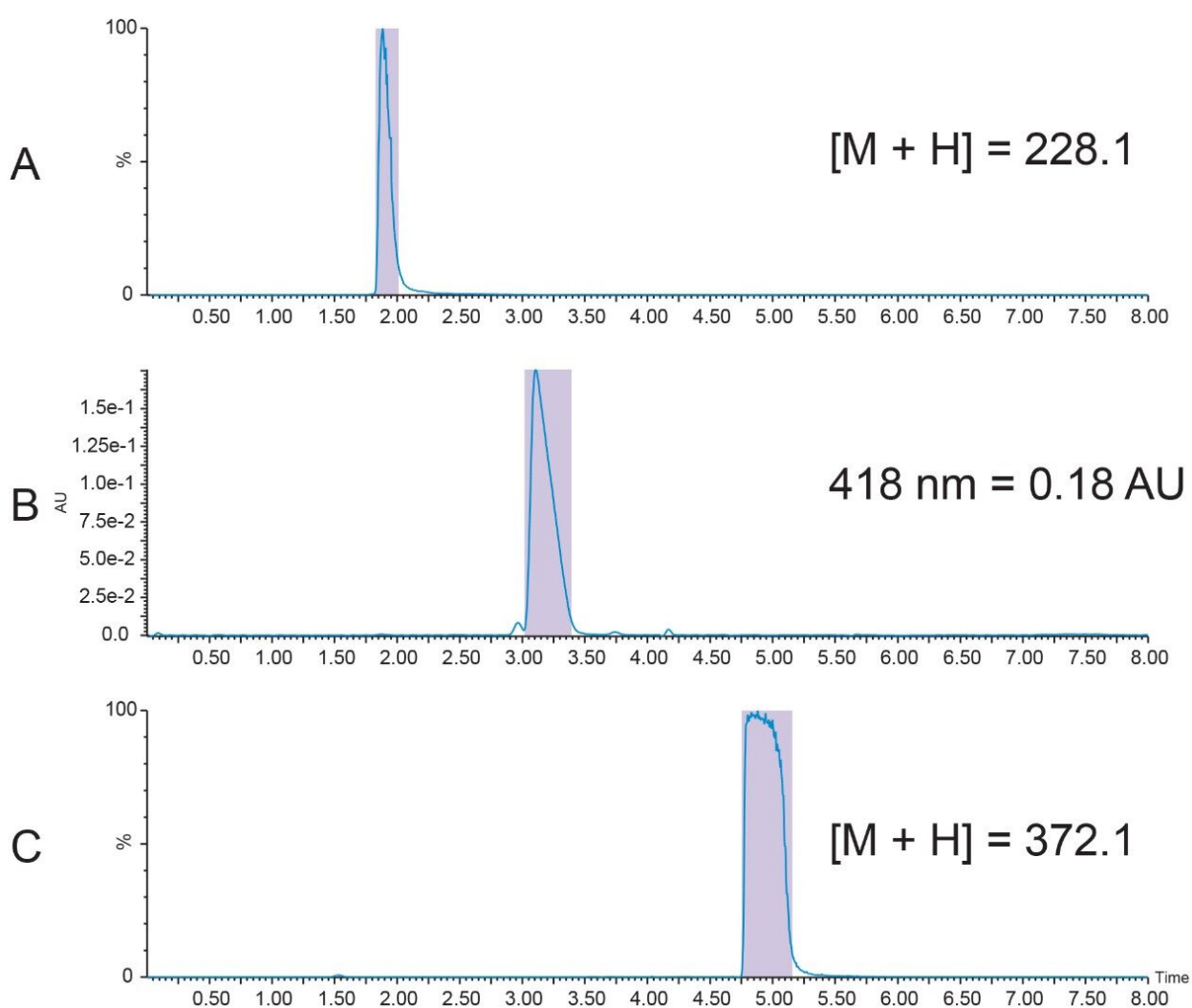


Figure 2. Fraction collection results from the chromatography test.

## 2. Prepared the analyte

A 10 mg/mL acetaminophen stock solution was prepared according to the following protocol.

Note: The exact values noted below were used for demonstration purposes only. The masses used in this procedure do not have to exactly match the ones that are obtained each time this procedure is performed. The values reported here are only meant to be a guideline for the preparation of the acetaminophen stock solution. It is important to note all masses and measures each time the procedure is executed.

A. Weighed approximately 250 mg acetaminophen into a 20 mL scintillation vial. (The mass used in this set of experiments was 250.87 mg.)

B. Prepared 100 mL of 95% water/5% methanol (mixed 5 mL methanol and 95 mL HPLC grade water).

C. Dissolved acetaminophen in ~22 mL of 95% water/5% methanol. Vortexed and sonicated the solution to completely solubilize the analyte.

D. Transferred the whole solution to a 25 mL volumetric flask.

E. Rinsed the vial 3 times with small amounts of diluent and added these rinses to the volumetric flask.

F. Brought the sample volume to 25 mL with additional diluent.

G. Inserted stopper into the volumetric flask and mixed well.

H. Calculated the acetaminophen stock solution concentration:

Acetaminophen concentration = Mass of acetaminophen/volume of diluent

For this example, then:  $250.87 \text{ mg} / 25 \text{ mL} = 10.03 \text{ mg/mL}$

## 3. Programmed the preparative HPLC method

Entered the HPLC method as shown in Figures 3 and 4.

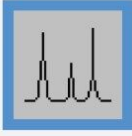
Note: This method was prepared for use on a 19 x 50 mm column. For columns with different dimensions, scale the method and the injection volume accordingly.<sup>1</sup> Note that the injection type was partial loop, centered with 30  $\mu\text{L}$  air gaps pre and post sample.

Modify Instrument Method (C:\MassLynx\Template.PRO\ACQUDB\25\_Col2\_5to50in5.bgm)

### Chromatographic Pump

Run Time: 8.00 min

Mobile Phase | Events | Analog



**Solvent Selections**

A: ☒ A1 ☐ A2

B: ☒ B1 ☐ B2

**Solvent Names**

A: A1

B: B1

**Pressure Limits**

Low: 0 psi

High: 6000 psi

Gradient: ☒ System ☐ Pump Only      Seal Wash Period: 5.0 minutes

	Time (min)	Flow (mL/min)	%A	%B	Curve
1	Initial	25.00	95.0	5.0	Initial
2	5.00	25.00	50.0	50.0	6
3	5.50	25.00	95.0	5.0	6
4	8.00	25.00	95.0	5.0	6
5					
6					

Comment: Method updated.

Config    OK    Cancel

Figure 3. Prep HPLC method for the analyte (acetaminophen).

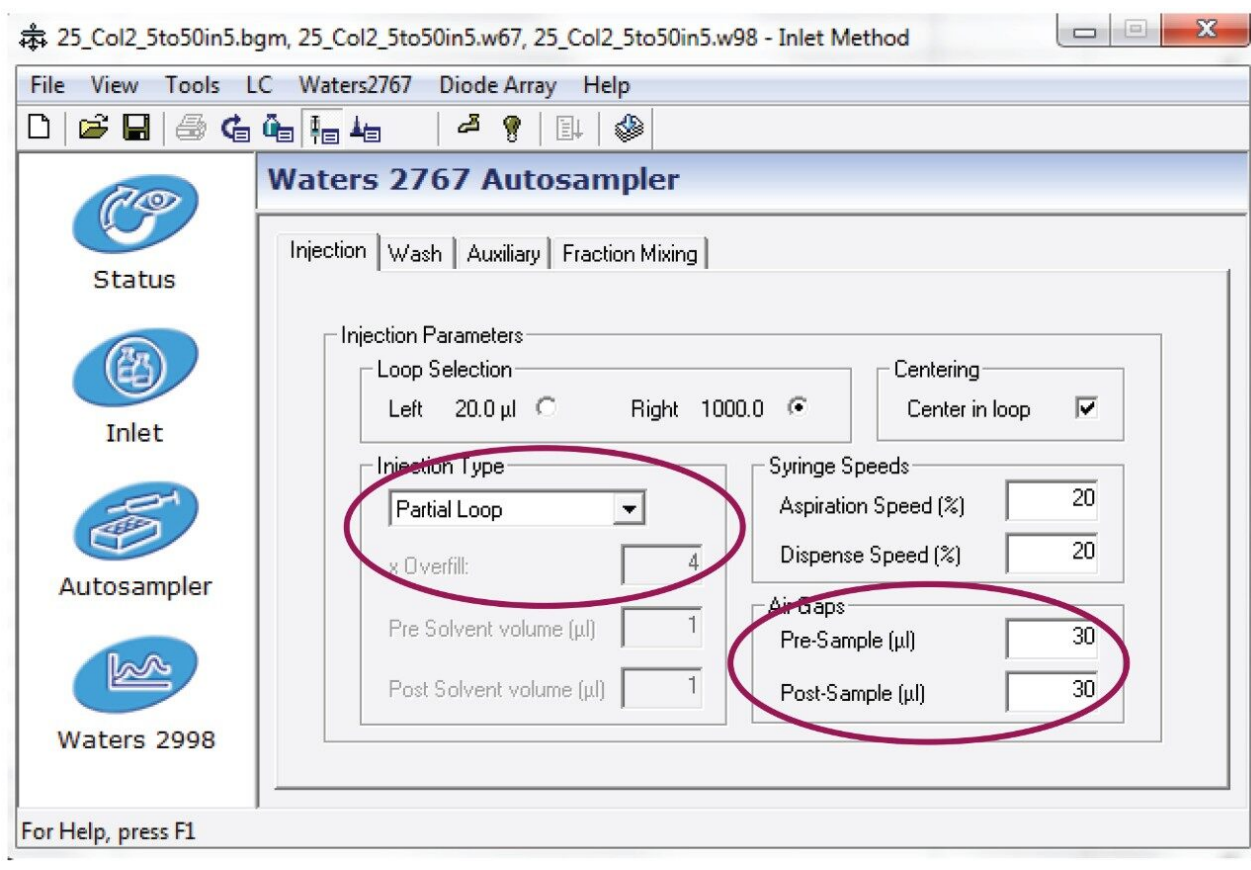


Figure 4. Autosampler parameters for the analyte (acetaminophen) prep HPLC method.

#### 4. Injected 200 µL of the 10 mg/mL analyte (acetaminophen) solution

A. Collected the fraction by UV trigger at 254 nm. The chromatogram should be similar to the one shown in Figure 5.



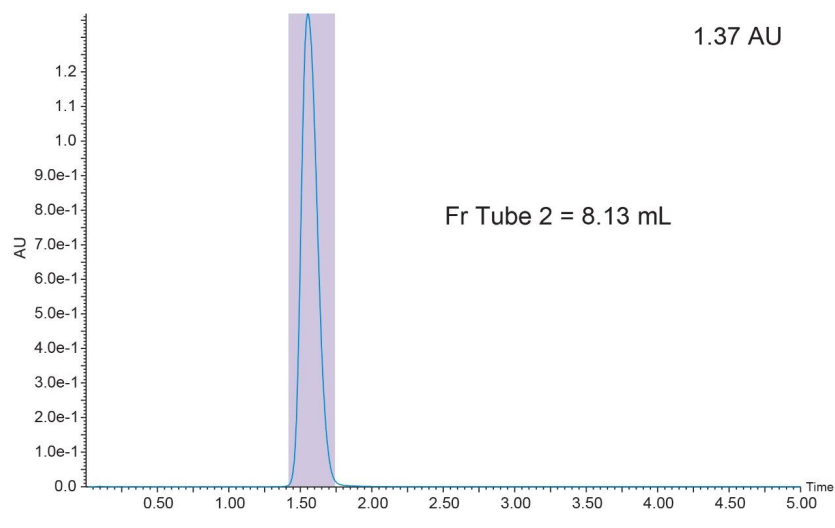


Figure 5. Analyte collection by UV trigger.

B. Injected another 200  $\mu$ L of sample and collected the fraction by MS trigger (ES+,  $m/z = 152.2$ ) in centroid mode.

The chromatogram should be similar to the one shown in Figure 6.

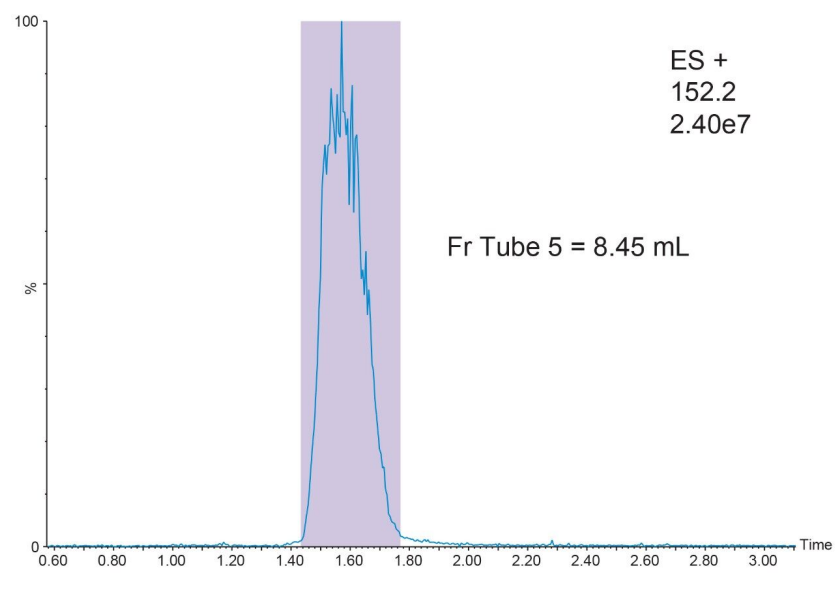


Figure 6. Analyte collection by mass trigger.

## 5. Diluted the collected fractions

A. Transferred the full fraction collected by UV trigger to a 10 mL volumetric flask. Rinsed the collection tube with a small amount of diluent (95% water/5% methanol) and quantitatively transferred the rinsate to the volumetric flask.

B. Brought the volume to 10 mL with 95% water/5% methanol. Inserted stopper into the volumetric flask and mixed well.

C. Repeated steps A and B for the fraction collected by mass trigger.

D. Created a collection standard by diluting 200  $\mu\text{L}$  of the 10 mg/mL analyte stock solution to 10 mL in a third volumetric flask and mixed well.

## 6. Prepared the calibration standards

A. The 10 mg/mL acetaminophen stock solution is equivalent to 10  $\mu\text{g}/\mu\text{L}$ .

B. Diluted 1 mL of the 10 mg/mL acetaminophen stock solution to 10 mL in a volumetric flask with 95% water/5% methanol to make a 1 mg/mL solution (equivalent to 1  $\mu\text{g}/\mu\text{L}$ ).

C. 1 mL calibration standards for injection were prepared:

50  $\mu\text{g}/\mu\text{L}$  = 0.05 mg/mL; 1 mg stock/0.05 mg = 20x dilution

Diluted 50  $\mu\text{L}$  of the 1 mg/mL solution to 1 mL.

(50  $\mu\text{L}$  + 950  $\mu\text{L}$  diluent)

100  $\mu\text{g}/\mu\text{L}$  = 0.1 mg/mL; 1 mg stock/0.1 mg = 10x dilution

Diluted 100  $\mu\text{L}$  of the 1 mg/mL solution to 1 mL.

(100  $\mu\text{L}$  + 900  $\mu\text{L}$  diluent)

200  $\mu\text{g}/\mu\text{L}$  = 0.2 mg/mL; 1 mg stock/0.2 mg = 5x dilution

Diluted 200  $\mu\text{L}$  of the 1 mg/mL solution to 1 mL.

(200  $\mu\text{L}$  + 800  $\mu\text{L}$  diluent)

500  $\mu\text{g}/\mu\text{L}$  = 0.5 mg/mL; 1 mg stock/0.5 mg = 2x dilution

Diluted 500  $\mu\text{L}$  of the 1 mg/mL solution to 1 mL.

(500  $\mu\text{L}$  + 500  $\mu\text{L}$  diluent)

## 7. Programmed the analytical HPLC method for analyte fraction analysis

Entered the HPLC method as shown in figures 7 and 8.

Note: This method was prepared for use on a 4.6 x 50 mm column. For columns with different dimensions, scale the method and the injection volume accordingly. Note that the injection type was full loop with 2x overfill.

Modify Instrument Method (C:\MassLynx\Template.PRO\Acqudb\1\_Col1\_5to50in5.bgm)

### Chromatographic Pump

Run Time: 8.00 min

Mobile Phase | Events | Analog

**Solvent Selections**

A: ☒ A1 ☐ A2

B: ☒ B1 ☐ B2

**Solvent Names**

A: A1

B: B1

**Pressure Limits**

Low: 0 psi

High: 6000 psi

Gradient: ☒ System ☐ Pump Only      Seal Wash Period: 5.0 minutes

	Time (min)	Flow (mL/min)	%A	%B	Curve
1	Initial	1.46	95.0	5.0	Initial
2	5.00	1.46	50.0	50.0	6
3	5.50	1.46	95.0	5.0	6
4	8.00	1.46	95.0	5.0	6
5					
6					

Comment: Method updated.

Config    OK    Cancel

Figure 7. Analytical HPLC method for acetaminophen fraction analysis.

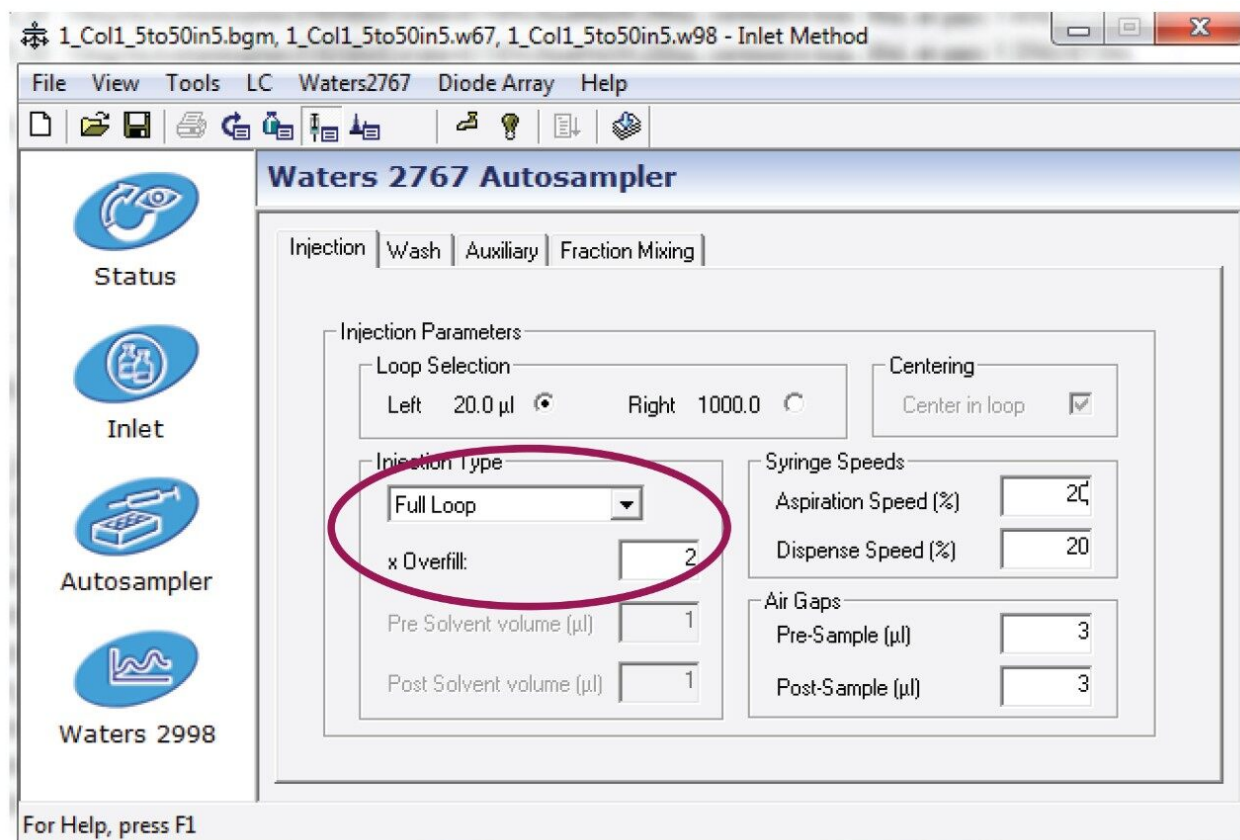


Figure 8. Autosampler parameters for the acetaminophen analytical HPLC method.

8. Injected 20 µL of each of the calibration standards as well as the diluted fractions collected by the UV and mass triggers.

### 9. Manually calculated recovery for the fractions collected by UV and mass triggers.

Calculated the recovery for the fraction collection using the following formula:

% Recovery = Area acetaminophen in fraction/Area acetaminophen in collection standard x 100. The chromatogram labelled "Crude" is considered the collection standard in figures 9 and 10.

Results for this experiment are shown in figures 9 and 10.

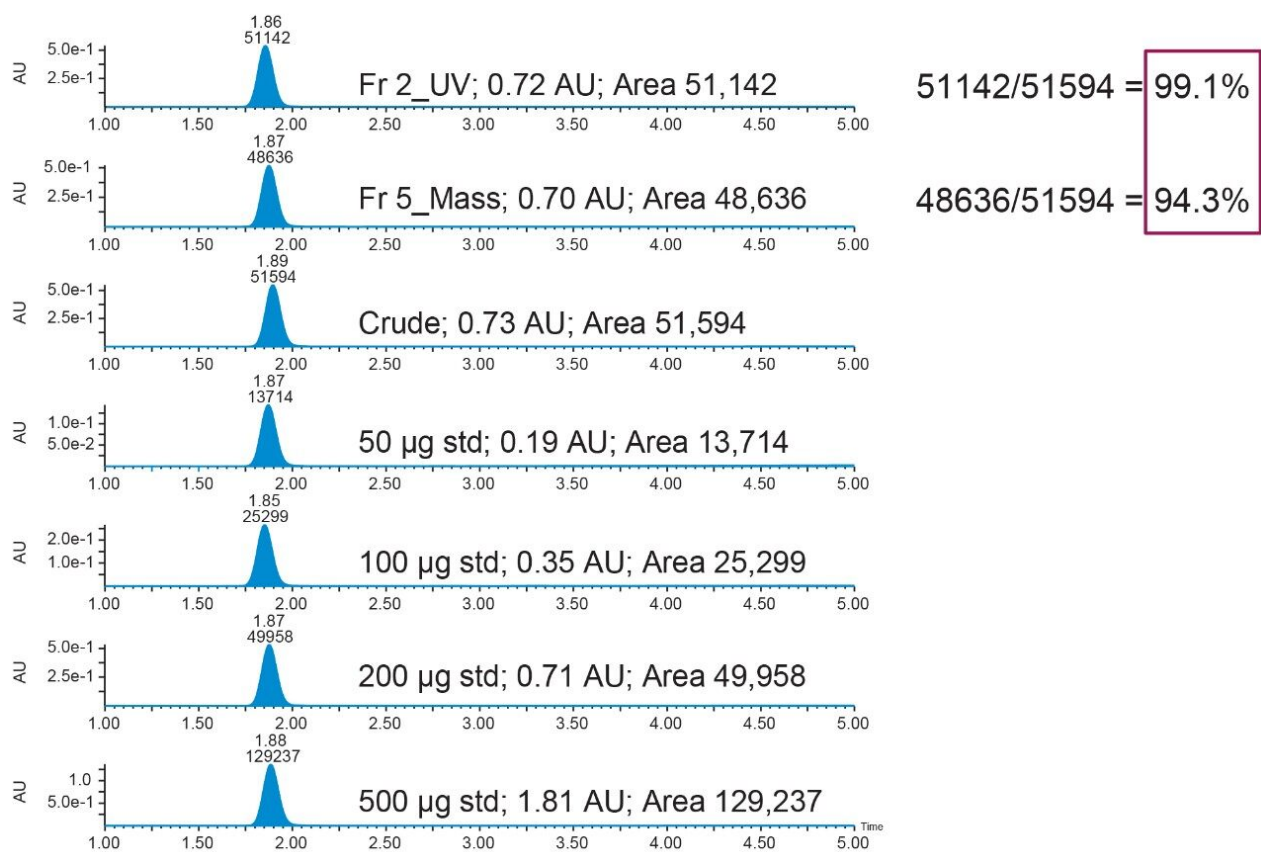


Figure 9. Areas for calibration standards and samples at 254 nm.

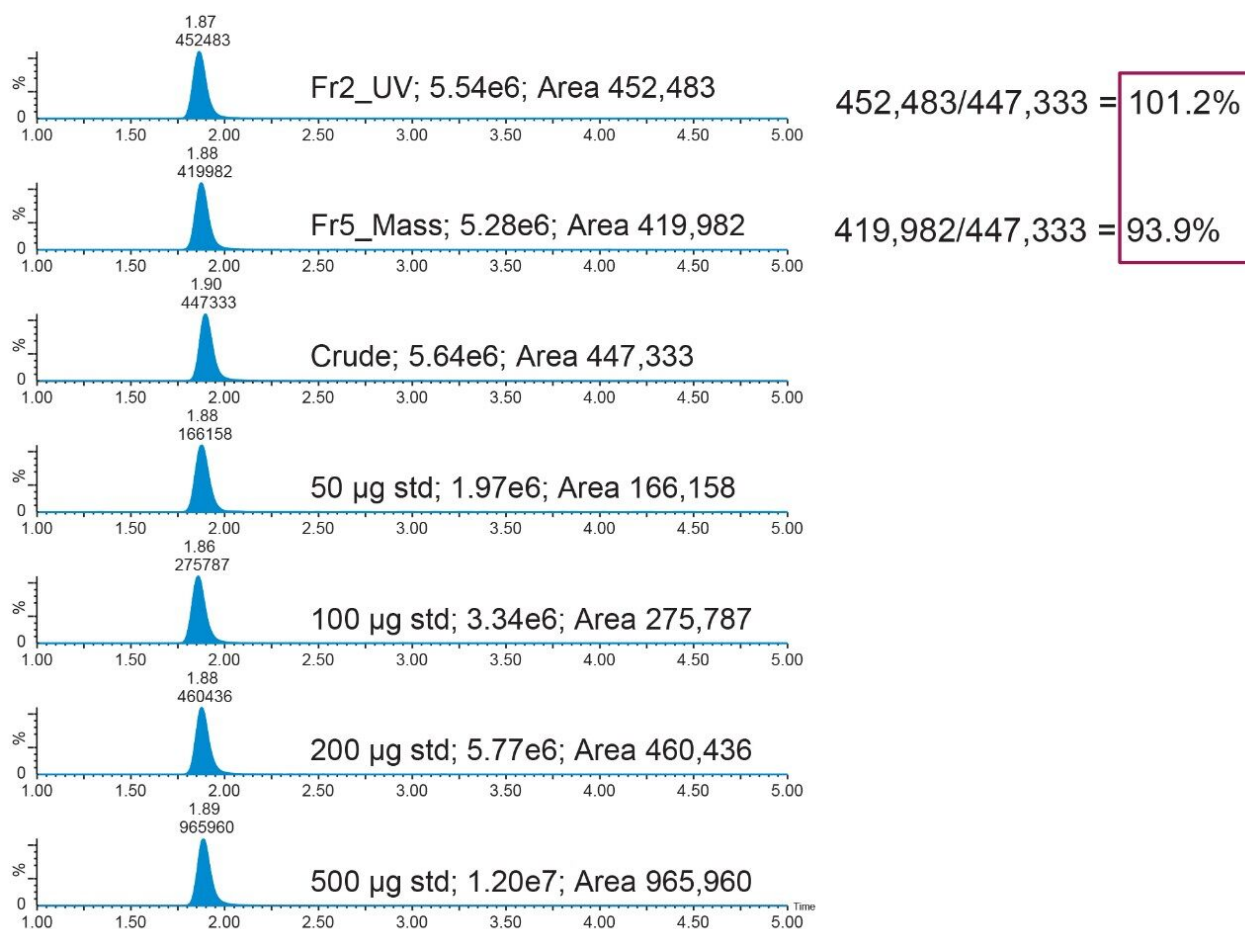


Figure 10. Areas for calibration standards and samples at  $m/z = 152.2$ .

10. Created a calibration curve and processed the data using TargetLynx.

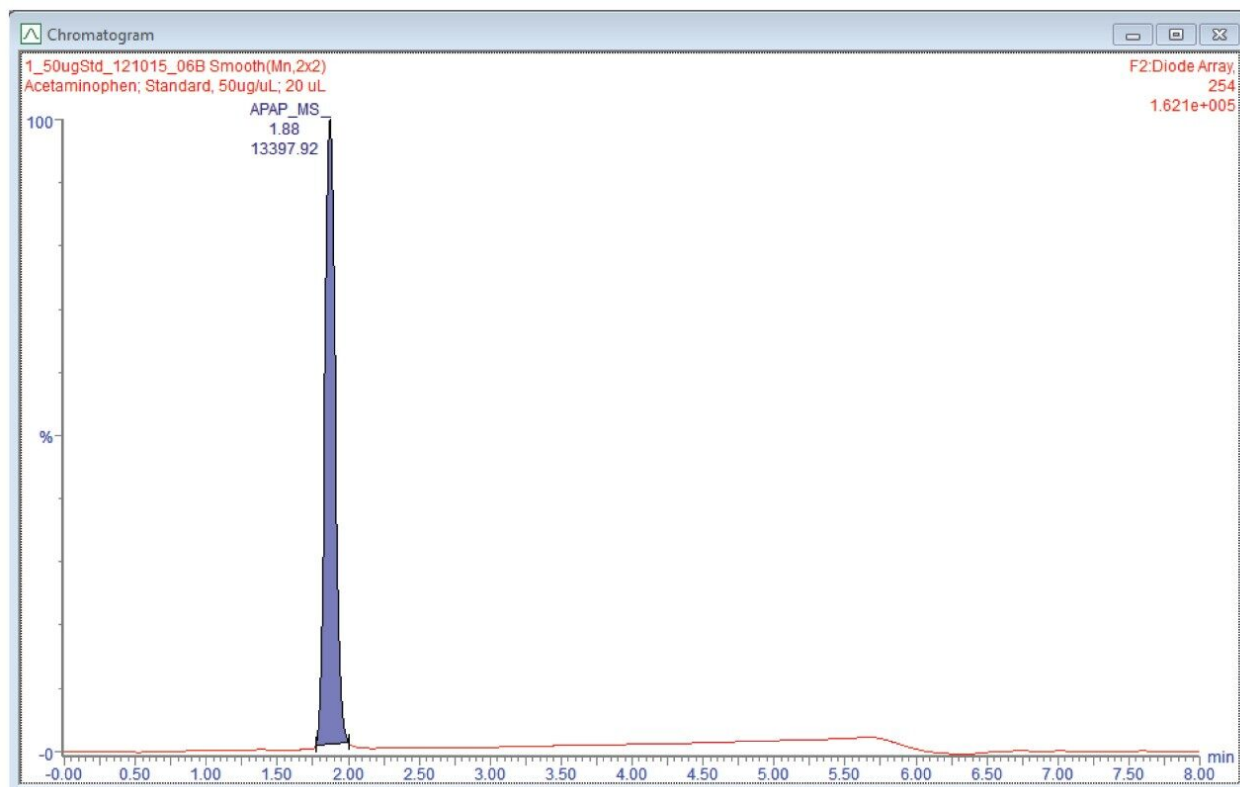


Figure 11. Representative integration example for 50  $\mu$ g standard.

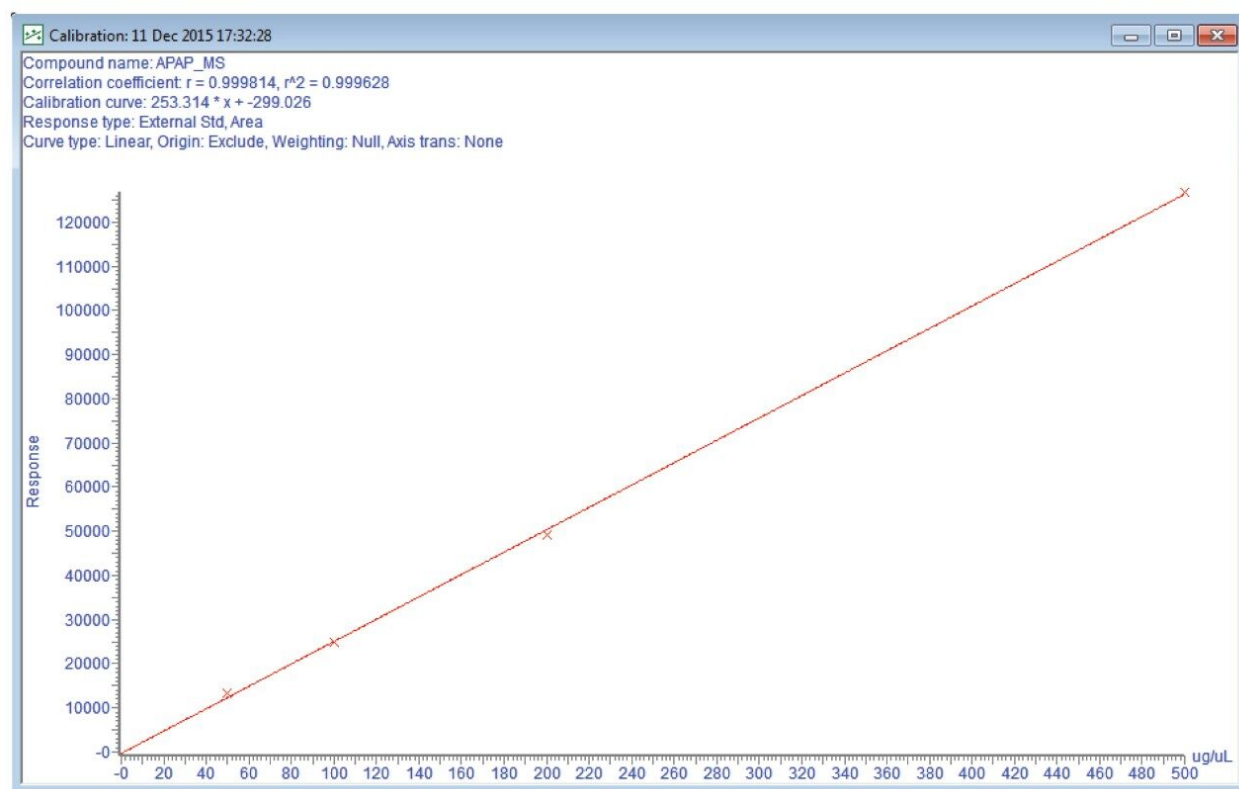
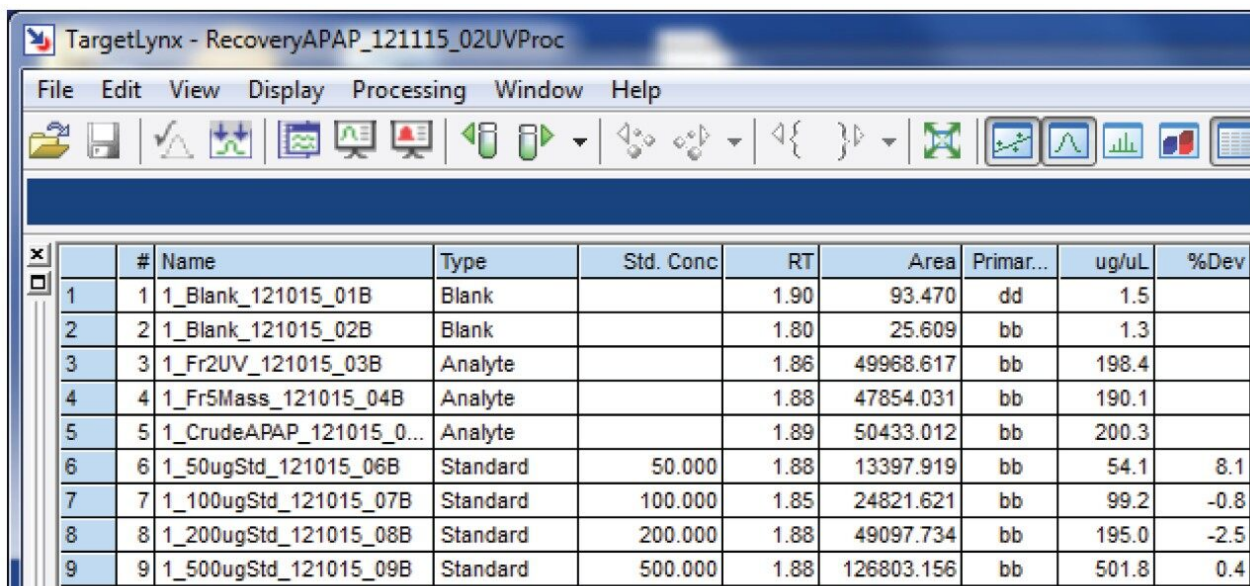


Figure 12. Calibration curve.





#	Name	Type	Std. Conc	RT	Area	Primar...	ug/uL	%Dev
1	1_Blank_121015_01B	Blank		1.90	93.470	dd	1.5	
2	1_Blank_121015_02B	Blank		1.80	25.609	bb	1.3	
3	1_Fr2UV_121015_03B	Analyte		1.86	49968.617	bb	198.4	
4	1_Fr5Mass_121015_04B	Analyte		1.88	47854.031	bb	190.1	
5	1_CrudeAPAP_121015_0...	Analyte		1.89	50433.012	bb	200.3	
6	1_50ugStd_121015_06B	Standard	50.000	1.88	13397.919	bb	54.1	8.1
7	1_100ugStd_121015_07B	Standard	100.000	1.85	24821.621	bb	99.2	-0.8
8	1_200ugStd_121015_08B	Standard	200.000	1.88	49097.734	bb	195.0	-2.5
9	1_500ugStd_121015_09B	Standard	500.000	1.88	126803.156	bb	501.8	0.4

$$\text{Collection by UV: } 198.4/200.3 \times 100 = 99.1\%$$

$$\text{Collection by Mass: } 190.1/200.3 \times 100 = 94.9\%$$

Figure 13. Recovery determined using TargetLynx processing.

## Criteria that influence recovery

Several factors may impact the calculated recovery on a chromatographic system.

### Hardware considerations

A. System configuration: Ensure that appropriate methods specific for the mass detector and/or UV detector are used for data generation.

B. Timing: Ensure that the system is timed correctly for fraction collection at the specified purification flow rate.

C. Plumbing: Ensure that the tubing diameter and flow rate is appropriate for the specified purification flow rate.

D. Sample loop: Inject no more than approximately half the installed loop volume and use sample loops with narrow ID tubing for reduced band broadening.

E. Column: Ensure that the sample is sufficiently retained and elutes with good peak shape with defined peak

start and peak termination points for unambiguous integration. Samples that tail chromatographically are not recommended.

F. Inject port: Ensure that the needle depth is set to the optimum depth to avoid sample loss during injection.

G. Passive splitter configuration: Ensure that the Waters splitter is appropriate for the purification flow rate and that it is pressure balanced.

H. Flow to the mass detector probe: Ensure that the flow to the probe is optimized for the mass detector configured in the system.

## Software considerations

A. Injection parameters: Ensure that the options selected are the ones that will be used in the isolation process. The recommended injection parameters for establishing baseline recovery on the system include partial loop, centered, with 30  $\mu$ L air gaps preand post- sample for prep, and full loop with 2x overfill for analytical runs.

B. Peak start/terminate: Optimize the settings for each detector in the system.

C. Minimum intensity threshold: Optimize the setting for each detector in the system.

## Technique considerations for the analyst

A. Use only excellent quality, calibrated pipettors/volumetric flasks for sample handling.

B. Ensure the efficient quantitative transfer of analyte by rinsing tubes, etc., with a small amount of diluent and accurately transferring the rinsate to the receiving vessel.

C. Dilute all samples "up to" the calibration line on the volumetric flask. The bottom of the meniscus should touch the calibration line.

D. Ensure adequate mixing to assure sample homogeneity prior to analysis.

E. If desired, consider performing multiple injections for a more complete statistical analysis of the samples and standards.

---

## Conclusion

- The Waters AutoPurification System provides excellent sample recovery in the standard configuration, reducing the number of runs required to produce target compound.
- Manual and automatic processing results are almost identical, ensuring the analyst that either calculation method is acceptable for generating credible recovery values.
- Reducing the number of chromatographic runs with maximum target compound recovery saves time and solvent, which improves process efficiency.
- Enhanced process efficiency streamlines the purification workflow and reduces cost.

---

## References

1. Aubin A, Jablonski J. Prep 150 LC System: Considerations for Analytical to Preparative Scaling. Waters Application Note 720005458EN. July 2015.

---

## Featured Products

AutoPurification System <<https://www.waters.com/10007147>>

2545 Binary Gradient Module <<https://www.waters.com/534320>>

2757 Sample Manager–Fraction Collector <<https://www.waters.com/515177>>

SQ Detector 2 <<https://www.waters.com/134631584>>

MassLynx MS Software <<https://www.waters.com/513662>>

720006140, November 2017

©2019 Waters Corporation. All Rights Reserved.