

## Application Note

# Antibody Quantification Using ProteinWorks eXpress Digest Kits and Multiple Plasma Volumes

---

Paula Orens, Mary E. Lame, Sherri Naughton, Erin E. Chambers

Waters Corporation

This is an Application Brief and does not contain a detailed Experimental section.

---

## Abstract

Recently there has been a trend towards LC-MS for the bioanalytical quantification of peptide and protein therapeutics due to the many benefits it affords (multiplexing, improved specificity, broader dynamic range and fast method development time). However, protein quantification challenges still exist with regard to assay sensitivity, small sample volume requirements, and laborious and often complex workflows. This is especially in contrast to ligand binding assays. Thus, there is a strong need for simpler and more broadly applicable standardized workflows, ideal for low sample volume assays (<50 µL), for the quantification of proteins.

## Benefits

Broad applicability across a range of sample volumes, and the inherent flexibility of the ProteinWorks eXpress Direct Digest Kits for the quantification of monoclonal antibody (mAb) drugs by LC-MS/MS.

---

---

## Introduction

Over the past decade, MS platform technologies have steadily increased in sensitivity and ease of use. At the same time, this increase in sensitivity has facilitated the use of smaller sample volumes. As such, microsampling techniques have become common place. These techniques allow for collection from pre-clinical species such as rodent, and minimize animal use. Additionally, as biological drug development increases, LC-MS assays to quantify both therapeutic and endogenous peptides and proteins are growing. The desire to use small sample volumes presents an even greater challenge for protein and peptide quantification analyses due to the complexity of the workflow and their inherent lower MS sensitivity, relative to small molecules. While some studies are dominated by the need to use sample volumes <50  $\mu$ L, others require more sample to increase sensitivity. Therefore, there is a need for a simple, kit-based approach that accommodates a range of plasma volumes and is easily implemented by scientists unfamiliar with the workflows.



---

## Results and Discussion

LC-MS for quantification of therapeutic and endogenous proteins is steadily gaining in its use, and unlike small molecule LC-MS analysis, it presents many new and unique challenges. Typically one needs to perform an enzymatic digestion (most commonly trypsin) in plasma, followed by quantification of one or multiple

---

representative tryptic peptides using multiple reaction monitoring (MRM). There is no single standard work flow for this task, and it is often traditional “small molecule” scientists faced with learning and implementing these unfamiliar workflows, which can be complex and laborious. Required sample volumes will vary depending on assay or sensitivity requirements. This can make it difficult to know where to start, particularly if one considers the diversity of proteins, as they can vary greatly in their size, structure, and amino acid sequence. For this reason, we have developed a fully flexible yet generic, kit-based sample preparation strategy using the ProteinWorks eXpress Direct Digest Kit (p/n 176003688) for the simultaneous quantification of the monoclonal antibody drugs: infliximab, adalimumab, bevacizumab, and trastuzumab with plasma volumes  $\leq 70 \mu\text{L}$ . In short, the mAb’s were spiked into plasma at concentrations between 5–50  $\mu\text{g/mL}$ . Sample aliquots of 15, 35, and 70  $\mu\text{L}$  of the mAb spiked plasma were then directly digested with the ProteinWorks eXpress Direct Digest Kit using the generic protocol provided. For all plasma sample volumes, and using the ProteinWorks kits for digestion, standard curves for all peptides, from all mAb drugs, were linear with  $R^2 \geq 0.99$ , using 1/x weighting. Mean % accuracies of the standard curve points were >99% (Table 1). Standard curves arising from a range of starting plasma volumes are shown in Figure 1, Panels A–C. The representative infliximab tryptic peptide (DILLTQSPAILSVPGER) is shown as an example. The chromatographic performance is highlighted in Figure 2, panels A–D. Multiple calibration levels from representative signature peptides of infliximab, bevacizumab, trastuzumab, and adalimumab are shown.

Protein	Peptide	Linear fit ( $r^2$ ) with 1/x weighting			Mean % accuracy		
Standard curve range 5.0–50.0 (µg/mL)		15 µL plasma	35 µL plasma	70 µL plasma	15 µL plasma	35 µL plasma	70 µL plasma
Infliximab	SINSATHYAESVK	0.999	0.999	0.997	100.00	99.99	99.99
	DILLTQSPAILSVSPGER	0.999	0.998	0.994	99.99	100.00	100.01
Trastuzumab	FTISADTSK	0.997	0.993	0.998	100.00	100.01	99.99
	DTYIHWVR	0.995	0.995	0.996	100.00	100.02	100.02
	IYPTNGYTR	0.998	0.996	0.991	99.98	99.98	98.79
Bevacizumab	STAYLQMNSLR	0.999	0.998	0.995	100.00	100.01	99.99
	FTFSLDTSK	0.999	0.999	0.993	100.02	100.00	100.00
Adalimumab	APYTFGQGTK	0.994	0.997	0.995	99.99	99.99	99.99
	NYLAWYQQKPGK	0.997	0.998	0.999	99.99	100.02	100.01

Table 1. Linear dynamic range and standard curve statistics for the various plasma digestion volumes, for infliximab, adalimumab, trastuzumab, and bevacizumab using the ProteinWorks eXpress Direct Digest Kit.

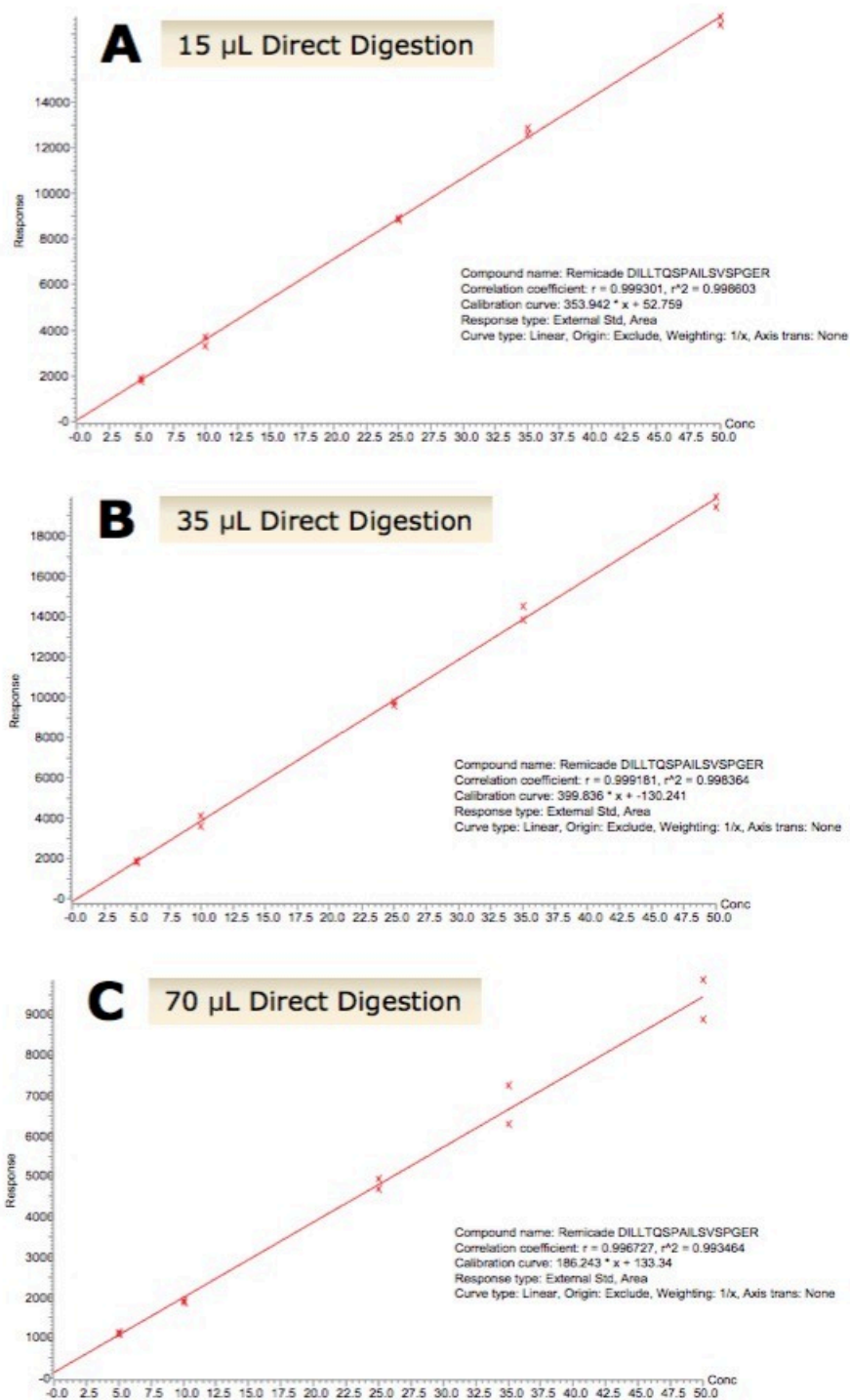


Figure 1. Representative calibration curves arising from digestion of 15, 35, and 70  $\mu$ L of plasma. The

*infiximab signature peptide DILLTQSPAILSVSPGER is shown as an example.*

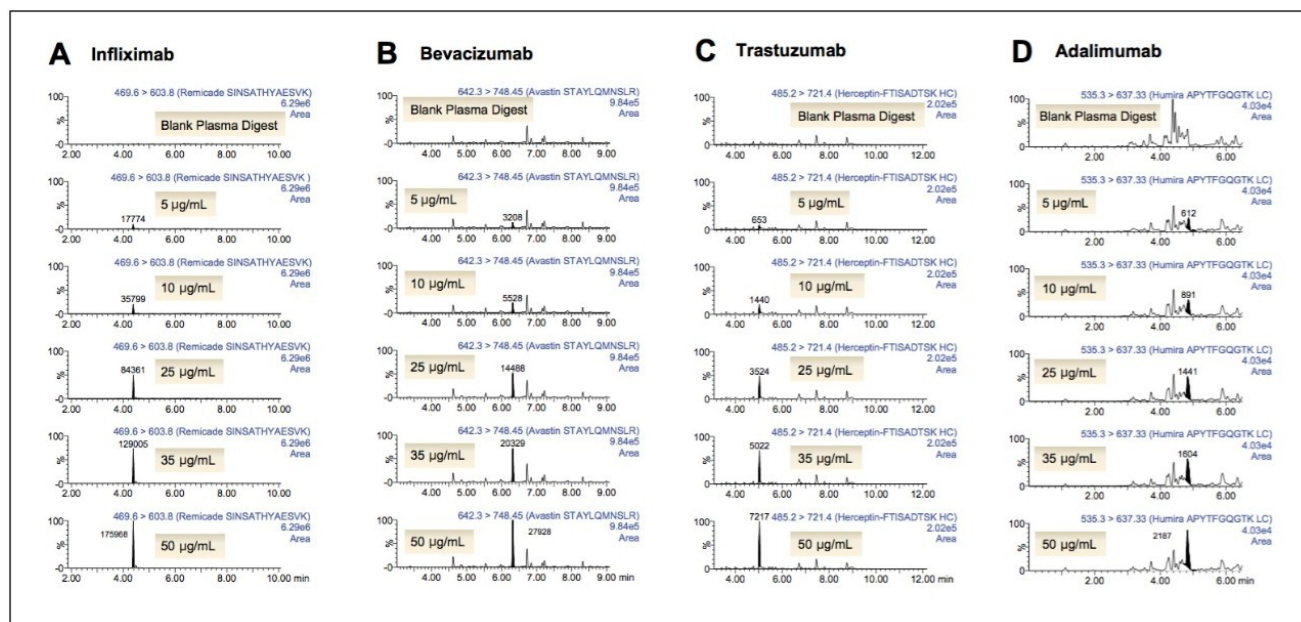


Figure 2. Chromatograms from calibration levels (5–50 µg/mL) of infiximab, bevacizumab, trastuzumab, and adalimumab (15 µL starting plasma) are shown in panels A–D, respectively.

## Conclusion

In this study, a flexible 'kit-based' approach, using a single protocol which accommodates a range of sample volumes (15–70 µL) eliminated the need for method development in discovery studies, and facilitated the accurate quantification of 4 monoclonal antibody drugs.

## Featured Products

ProteinWorks <<https://www.waters.com/134857789>>

Available for purchase online:

ProteinWorks eXpress Direct Digest Kit <

<https://www.waters.com/waters/partDetail.htm?partNumber=176003688>>

720005575, January 2016

©2019 Waters Corporation. All Rights Reserved.