

Routine Separation Approach to Enhance Specificity and Identification in Authentication Profiling of Natural Food Products Using UPLC-IM-MS

Michael McCullagh, David Douce, Cíntia A M Pereira, Janete H Yariwake

Waters Corporation, Universidade de São Paulo, Instituto de Química de São Carlos



Abstract

The genus *Passiflora* is comprised of approximately 450 species, but only a few are commercially exploited. Several *Passiflora* (Passifloraceae) species are utilized as phytomedicines (anxiolytics). These contain flavonoids, mainly C-glycosylflavones- apigenin and luteolin derivatives which frequently occur as isomers.

Flavonoids are polyphenolic compounds that are ubiquitous in nature and are one of the largest and most widespread classes of compounds. To date, over 4,000 flavonoids have been identified and they have attracted considerable interest due to their diverse pharmacological and biological properties. Such attributes mean many flavonoid containing plant species may be used as functional foods or phytomedicines.

The most well-known species of this family is *Passiflora incarnata*, which is found in Europe and North America. Originally from Brazil, *P.edulis* is very popular and cultivated in many countries for its edible fruits. Passion fruit (*P.edulis* and *P.alata*) is known as Maracujá in Brazil, the largest producer of *P.edulis* in the world. In the U.S. and EU it is popular because of its pleasant taste and sedative/traquilizing effects from infusion of its leaves. Leaf extracts are also utilized for flavoring and in juices by the food industry. The fruit are used in juices, ice creams, or eaten naturally.

Passiflora edulis is also native to tropical areas of other South American countries, including Paraguay, Argentina, and Peru. In addition to its anxiolytic effects *P.edulis* leaves are recognized for their antiinflammatory activity. The sedative properties of the *Passiflora* species are related to its phytochemical makeup.

It is therefore important that consumer products be authenticated with confidence, and that an accurate profile of the phytochemical composition is obtained.

The use of flavonoid compounds as markers to profile a species or authenticate a consumer product is important, but also a challenge due to sample complexity. Analysis of such complex samples can be difficult when the sample is comprised of isomers. Subtle changes in chromatography resulting from the sample matrix, column loading, and chromatographic conditions can result in the coelution of isomers.

In this application note, we investigate the use of UPLC with ion mobility mass spectrometry as a route to specific and unambiguous identification of flavonoid isomers. UPLC-IM-MS offers unique advantages to profiling complex mixtures. We demonstrate a routine, non-targeted screening workflow that can uniquely determine the presence of these isomeric flavonoid markers. The UPLC-IM-MS system enables the authentication of phytochemical makeup with unmatched specificity that cannot be provided by mass accuracy alone.

Benefits

- Routine non-targeted screening workflow to uniquely determine the presence of isomeric flavonoid markers.
- Travelling wave collision cross section measurements ($^{TW}CCSN_2$) values can be used as an additional identification point to characterize 6-C and 8-C flavonoid glycoside isomers (vitexin/isovitexin) (orientin/isoorientin).
- ACQUITY UPLC and ion mobility mass spectrometry (UPLC-IM-MS) can be used to perform authentication profiling, whether related to product manufacture/processing, speciation, or dietary consequence.
- This UPLC-IM-MS screening workflow can produce $^{TW}CCSN_2$ values for more than 10,000 analytes in one acquisition.

Introduction

The combined peak capacity of UPLC-IM-MS and nitrogen buffer gas, travelling wave collision cross section measurements ($^{TW}CCSN_2$) can be used for routine unequivocal identification of marker flavonoid isomers in complex mixtures such as herbal tea products and dietary supplements. The genus *Passiflora* is comprised of approximately 450 species, but only a few are commercially exploited. Several *Passiflora* (*Passifloraceae*) species are utilized as phytomedicines (anxiolytics). These contain flavonoids, mainly C-glycosylflavones- apigenin and luteolin derivatives which frequently occur as isomers. Flavonoids are polyphenolic compounds that are ubiquitous in nature and are one of the largest and most widespread classes of compounds. To date, over 4,000 flavonoids have been identified and they have attracted considerable interest due to their diverse pharmacological and biological properties. Such attributes mean many flavonoid containing plant species may be used as functional foods or phytomedicines.

In the IM-MS authentication study performed *P. incarnata*, *P. edulis*, *P. caerulea*, and *P. alata* species have been profiled. The most well-known species of this family is *Passiflora incarnata*, which is found in Europe and North America. Originally from Brazil, *P. edulis* is very popular and cultivated in many countries for its edible fruits. Passion fruit (*P. edulis* and *P. alata*) is known as Maracujá in Brazil, the largest producer of *P. edulis* in the world. In the U.S. and EU it is popular because of its pleasant taste and sedative/traquilizing effects from infusion of its leaves. Leaf extracts are also utilized for flavoring and in juices by the food industry.² The fruit are used in juices, ice creams, or eaten naturally. *Passiflora edulis* is also native to tropical areas of other South American countries, including Paraguay, Argentina, and Peru.

In addition to its anxiolytic effects *P.edulis* leaves are recognized for their anti-inflammatory activity. The protective role that the intake of *P.edulis* aqueous extract might exert in an organism has been studied. The phytochemical analysis of *P.edulis* leaves contained twice the flavonoid content of *P.alata*.³ A consumer product containing *P.edulis* will therefore have a greater phytochemical content that will produce greater sedative effects than a product containing an equivalent amount of *P.alata*. If *P.alata* was substituted for *P.edulis*, the desired and expected sedative effects may not be experienced. Products labeled as "Natural" are not necessarily safe, but such products can be, if produced to legislative standards. Manufacturers have to prove that their products have been made to strict standards and contain a consistent and clearly marked dose, as stipulated in EU Directive 2004/24/EC, which came into full effect 30 April 2011.

The sedative properties of the *Passiflora* species are related to its phytochemical makeup. It is therefore important that consumer products be authenticated with confidence, and that an accurate profile of the phytochemical composition is obtained. The use of HPLC-MS and HPLC-MS/MS based methods to profile flavonoids has become more routine. The use of flavonoid compounds as markers to profile a species or authenticate a consumer product is important and also a challenge due to sample complexity. Zucolotto et. al.,⁴ performed an analysis of C-glycosyl flavonoids from the South American *Passiflora* species, where vitexin was not identified in *Passiflora edulis*, as was the case for Pereira et. al.⁵ However utilizing UPLC and time-of-flight (ToF) MS, the presence of vitexin in *P.alata* was confirmed.⁶ Analysis of such complex samples can be difficult when the sample is comprised of isomers. Subtle changes in chromatography resulting from the sample matrix, column loading, and chromatographic conditions can result in the coelution of isomers. Even using mass spectrometry alone, with MS/MS or CID, it is difficult to determine true identification, especially when the isomers produce the same fragment or product ions. However Pereira et. al. reported distinctive fragmentation patterns produced for 6-C and 8C glycosides,⁷ while March et. al.⁸ further confirmed these observations. Since the phytochemical makeup can affect biological properties, further advances in analytical techniques to profile flavonoids could impact the design of functional food products by providing additional information about their health and safety benefits, as well as improved taste.

In this application note, we investigate the use of UPLC-IM-MS as a route to specific and unambiguous identification of flavonoid isomers, as this technique offers some unique advantages to profiling complex mixtures. It is a combination of high resolution mass spectrometry and high efficiency ion mobility based measurements and UPLC separations. Ion mobility is a rapid orthogonal gas separation phase technique that allows another dimension of separation to be obtained within an LC timeframe. Compounds can be differentiated based on size, shape, and charge.

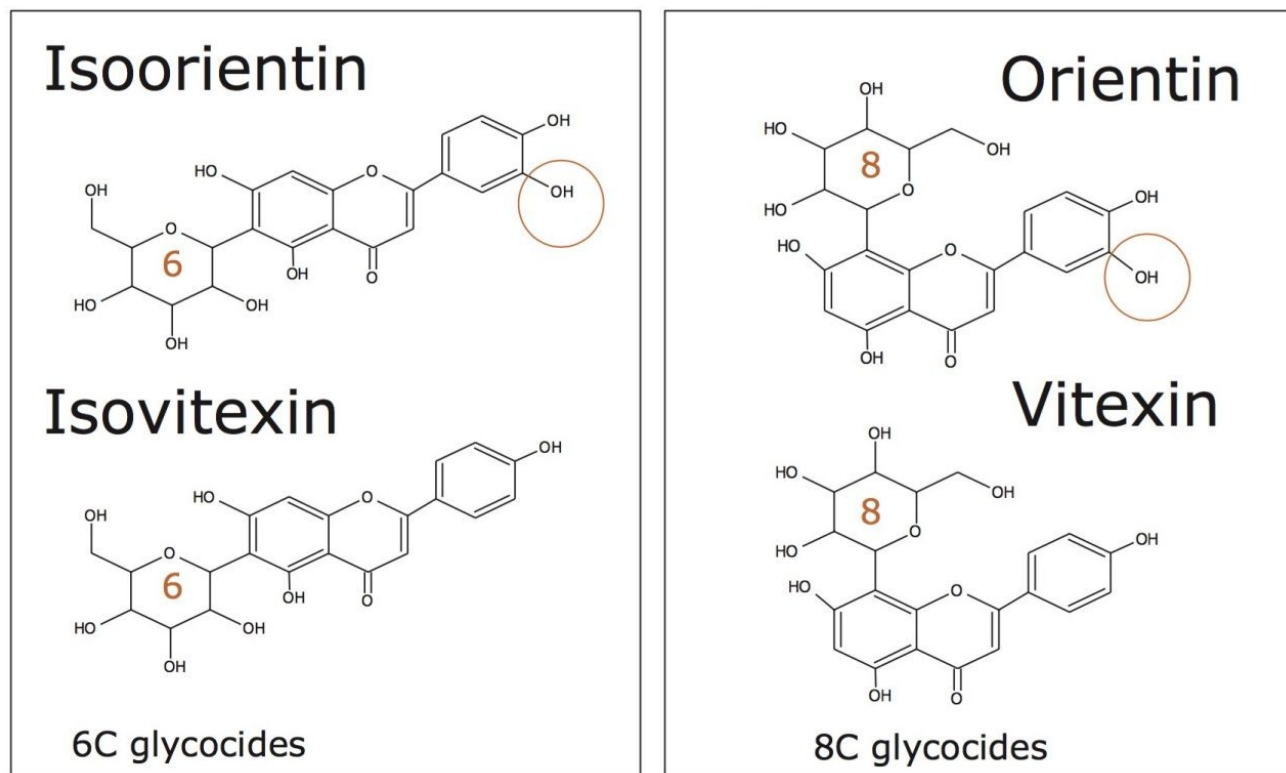


Figure 1. Structures of 6C and 8C glycosides profiled using UPLC-IM-MS.

Experimental

UPLC conditions

UPLC system:	ACQUITY UPLC I-Class
Column:	ACQUITY UPLC BEH C ₁₈ , 100 mm x 2.1 mm, 1.7 μm
Column temp.:	45 °C
Flow rate:	0.75 mL/min
Mobile phase A:	H ₂ O (0.1% Formic acid)
Mobile phase B:	Acetonitrile (0.1% Formic acid)

Gradient

Time (min)	Flow rate	%A	%B
0.00	0.75	98.0	2.0
1.00	0.75	98.0	2.0
5.00	0.75	95.0	5.0
10.00	0.75	80.0	20.0
13.00	0.75	70.0	30.0
15.00	0.75	20.0	80.0
15.10	0.75	98.0	2.0
17.00	0.75	98.0	2.0
Injection volume:	2 µL		

MS conditions

MS system:	SYNAPT G2-Si
Ionization mode:	ESI -
Capillary voltage:	2.3 kV
Sample cone voltage:	20 V
Desolvation temp.:	600 °C

Lockmass and LockCCS:	Leucine enkephalin, [M-H] ⁻ =554.2620
Acquisition range:	50 to 1200 <i>m/z</i>
Acquisition rate:	10 spectra/sec
Collision energy ramp:	35 to 75 eV
Resolution:	20,000 FWHM (res mode)
Default IMS parameters:	IMS T-Wave velocity ramp:
	Start: 1000 m/s
	End: 300 m/s
IMS T-Wave pulse height:	40 V
IMS gas flow:	90 mL

Analyte description

Hydroethanolic extracts *P.incarnata*, *P.edulis*, *P.caerulea*, and *P.alata*

Extraction procedure

Extraction with ethanol-water (2:1 v/v, 1 g plant/10 mL solvent according to Brazilian Pharmacopoeia procedure).

SPE cleanup (Sep-Pak. RP-18, elution with 60% methanol – H₂O).

Hydromethanolic fraction=4 mg/mL.

Hydromethanolic fraction dilution using H₂O: 10:1 (400 µg/mL) and 40:1 (100 µg/mL).

Results and Discussion

A collision cross section (CCS) value is a robust and precise physicochemical property of an ion. It is an important distinguishing characteristic that is related to its chemical structure and three-dimensional conformation.⁸ Using Nitrogen buffer gas, travelling wave collision cross section measurements ($^{TW}CCSN_2$) measurements can help increase targeted screening specificity. Previously generated $^{TW}CCSN_2$ measurements have been entered into the UNIFI Scientific Library. This allows the expected and determined $^{TW}CCSN_2$ values to be utilized to screen and confirm the presence of isomeric flavonoid markers. Here we present $^{TW}CCSN_2$ values (derived from ion mobility drift times) as a new identification parameter, which can be used to distinguish flavonoid isomers and to profile unknowns.

$^{TW}CCSN_2$, molecular ion accurate mass, ion mobility product ions, and retention time have been used to profile the hydromethanolic extracts of *P. incarnata*, *P. alata*, *P. edulis*, and *P. caerulea*, that were grown in Brazil. Results obtained clearly show the benefits of using CCS measurements and the combined peak capacity of the ACQUITY UPLC I-Class System with ion mobility. The enhanced peak capacity enabled more information to be extracted from product ion studies, and the individual ion mobility product ion spectra have been obtained for isomeric flavonoid isomers, which were coeluting. From the extracts characteristic assignment for 6-C and 8-C flavonoid glycoside isomers (vitexin/isovitexin) (orientin/isoorientin) were obtained, this is not possible using mass resolution alone.

In Figure 2 the complexity of the *P. edulis* extract is illustrated by the UPLC-IM-MS electrospray negative mode conventional base peak ion chromatogram obtained. However in Figure 3, using the ion mobility Data Viewer in UNIFI, the true complexity of the *P. edulis* sample profiled using ion mobility separation orthogonal to UPLC separation is shown.

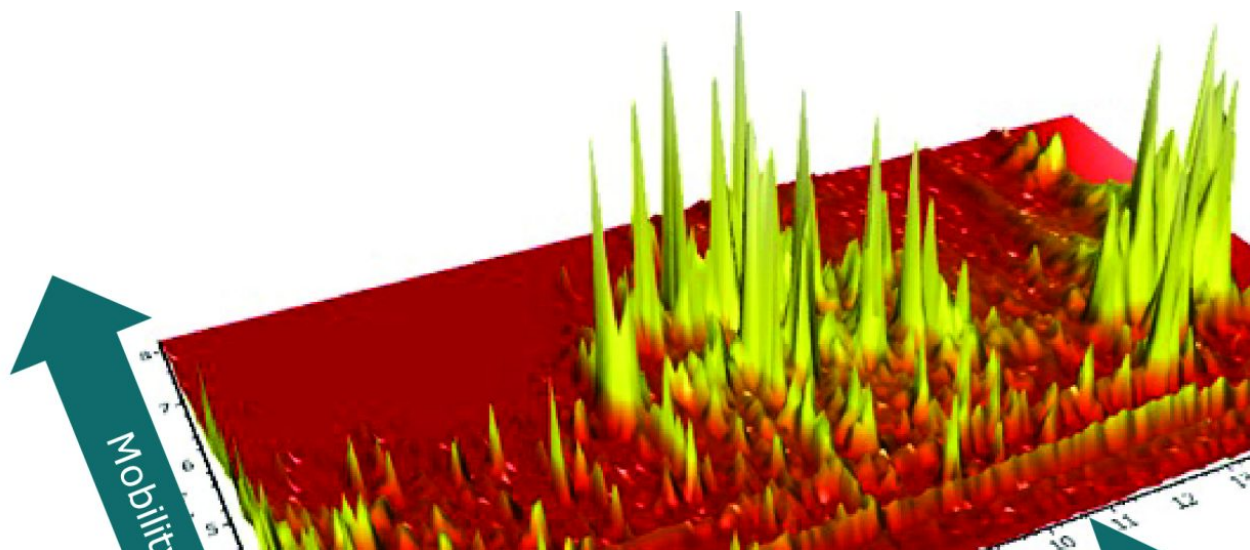


Figure 2. UPLC-IM-MS electrospray negative mode conventional base peak ion chromatogram obtained for *Passiflora edulis*. The complexity of the sample profiled is illustrated.

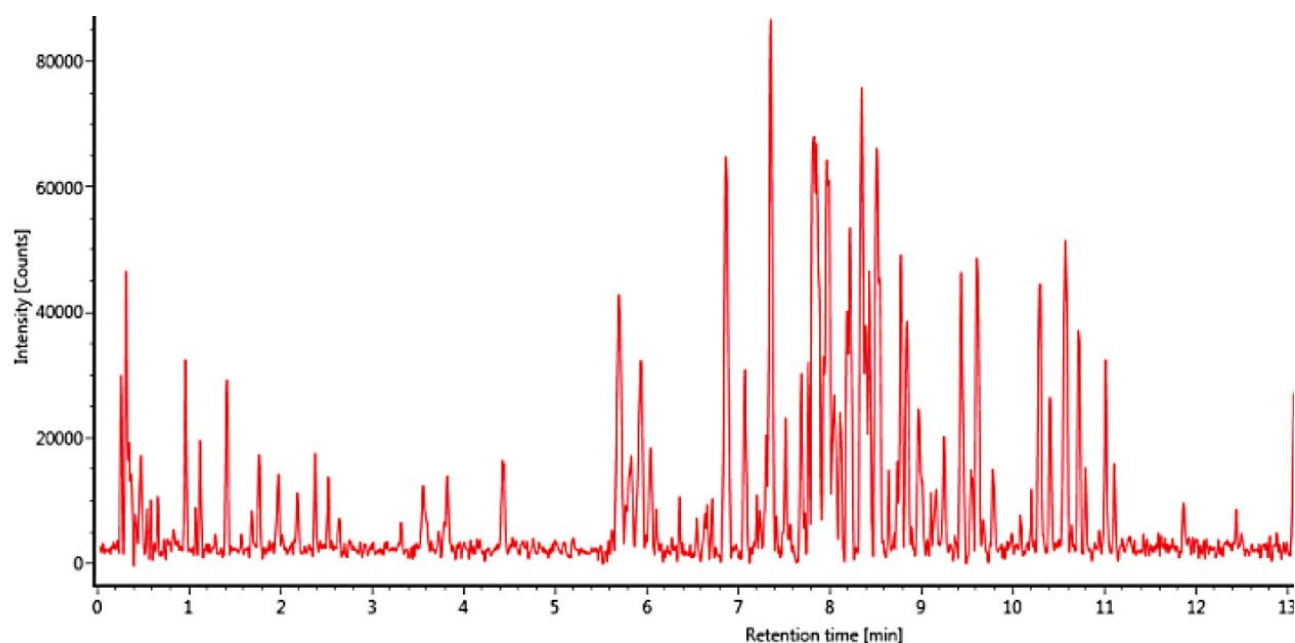


Figure 3. UPLC-IM-MS electrospray negative mode plot of drift time (ion mobility resolution) versus retention time for *Passiflora edulis*.

The enhanced peak capacity not only allows chromatographically coeluting compounds to be resolved, but also isomers. This enables their respective single component precursor/ion mobility product ion spectra to be generated and adds a high degree of specificity to the collision induced fragmentation spectra produced, during this generic screening acquisition process. The ion mobility product ions are aligned with their precursor ions using both retention time and ion mobility drift time. Hence two analytes at the same retention time, but at a

different drift times, result in ion mobility product ion spectra which are completely separated from each other. It is this process that allows the cleanest ion mobility product ion spectra to be produced.

CCS measurements were obtained for the marker flavonoid standards, and this information was used to create a scientific library in UNIFI incorporating the expected $^{TW}CCSN_2$ values. The four *Passiflora* extracts were routinely screened against the UNIFI flavonoid $^{TW}CCSN_2$ library to determine the presence and unequivocal identification of the 6-C and 8-C flavonoid glycosides isomers. Expected $^{TW}CCSN_2$ measurements for the flavonoid markers, isoorientin (197.68\AA^2), orientin (187.64\AA^2), vitexin (188.47\AA^2), and isovitexin (195.03\AA^2), were determined using standards. It is notable, that for each respective isomer pair, the 8-C-glycoside has a smaller collision cross section, and this can be used as a relative distinguishing characteristic. The observation made further illustrates how the selectivity of $^{TW}CCSN_2$ can be utilized. If retention times shift due to matrix, or if alternative chromatography methods are used, the glycoside pairs could still be distinguished regardless of retention time.

$^{TW}CCSN_2$ measurements for marker glycoside pairs (vitexin/isovitexin) $188.8\text{\AA}^2/195.5\text{\AA}^2$ have been determined, in the complex extract of *Passiflora caerulea*, shown in Figure 4, with respective CCS errors of -0.17% and -0.24%, when compared to the expected CCS values within the flavonoid screening library in UNIFI.

Also illustrated in Figure 4 is the UNIFI Component Summary for *Passiflora caerulea*, which shows the selected vitexin/isovitexin extracted mass chromatogram, with the corresponding precursor and ion mobility product ion spectra obtained. Mass measurement errors <2 ppm are presented, along with expected/observed collision cross sections and collision cross section errors. Additionally the extracted mass chromatogram shows the presence of a series of isobaric components between 8.0 and 12.0 minutes.

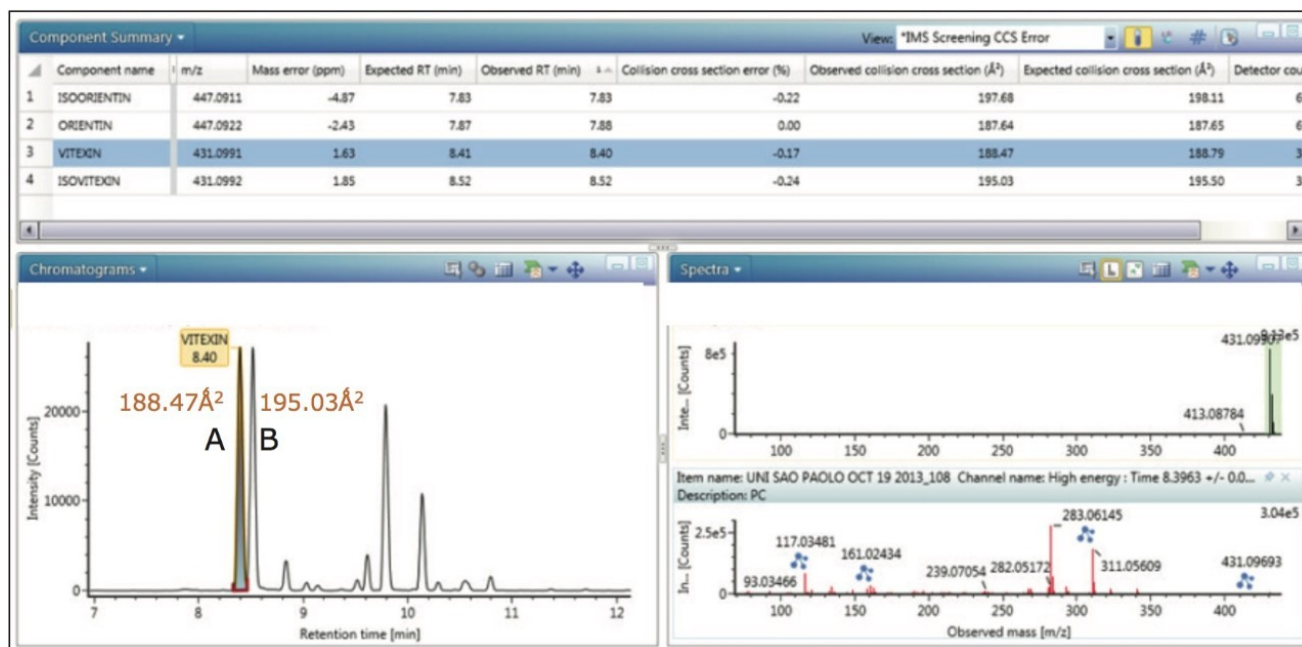


Figure 4. UNIFI Component Summary for *Passiflora caerulea*, illustrating vitexin (A) and isovitexin (B) selected in the extracted mass chromatogram, with the corresponding precursor and ion mobility product ion spectra obtained. Mass measurement error <2 ppm, collision cross section errors <0.5% are presented. The extracted mass chromatogram shows the presence of a series of isobaric components between 8.0 and 12.0 minutes. For the marker glycoside pair (orientin/isoorientin), 187.64 Å²/197.68 Å² has been determined with respective CCS errors of 0% and 0.22%. For all four species profiled, the CCS and mass measurement errors determined are shown in Table 1. The reproducibility and robustness of ^{TW}CCSN₂ measurements are further illustrated in Table 2, where the assay was repeated 10 months later as part of a ^{TW}CCSN₂ multivariate analysis study. When the results were compared to the expected ^{TW}CCSN₂ values in the UNIFI screening library created 10 months earlier, errors of <0.3% were obtained.

Marker flavonoid	Isoorientin		Orientin		Isovitexin		Vitexin	
Expected ^{TW} CCSN ₂	197.68 Å ²		187.64 Å ²		195.03 Å ²		188.47 Å ²	
Species	CCS (error)	Mass error PPM	CCS (error)	Mass error PPM	CCS (error)	Mass error PPM	CCS (error)	Mass error PPM
<i>P.edulis</i>	197.05 Å ² (-0.54)	-1.28	187.31 Å ² (-0.18)	-1.17	195.89 Å ² (0.20)	-2.25	188.57 Å ² (-0.12)	-0.25
<i>P.alata</i>	197.75 Å ² (-0.18)	-0.98	187.57 Å ² (-0.04)	-1.08	194.61 Å ² (-0.46)	-1.57	188.51 Å ² (-0.15)	-0.13
<i>P.incarnata</i>	197.64 Å ² (-0.24)	-1.89	187.47 Å ² (-0.10)	-0.58	195.46 Å ² (-0.02)	0.55	188.45 Å ² (-0.18)	2.67
<i>P.caerulea</i>	197.68 Å ² (-0.22)	-4.87	187.64 Å ² (0.0)	-2.43	195.03 Å ² (-0.24)	1.85	188.47 Å ² (-0.17)	1.63
CCS Std Dev	0.32		0.14		0.55		0.05	
CCSRSD	0.16		0.08		0.35		0.03	
RMS Mass Error PPM	2.73		1.48		1.68		1.57	

Table 1. CCS errors obtained for all four Passiflora species and mass measurement errors.

Marker flavonoid	Isoorientin		Orientin		Isovitexin		Vitexin	
Expected ^{TW} CCSN ₂	197.68 Å ²		187.64 Å ²		195.03 Å ²		188.47 Å ²	
Species	CCS (error)	Mass error PPM	CCS (error)	Mass error PPM	CCS (error)	Mass error PPM	CCS (error)	Mass error PPM
<i>P.edulis</i>	197.65 Å ² (-0.01)	2.51	187.37 Å ² (-0.15)	2.46	195.51 Å ² (0.01)	0.31	188.78 Å ² (-0.01)	1.12
<i>P.alata</i>	197.78 Å ² (-0.17)	3.30	187.36 Å ² (-0.15)	0.07	195.14 Å ² (-0.18)	-0.09	188.10 Å ² (-0.36)	-0.28
<i>P.incarnata</i>	197.41 Å ² (-0.35)	1.45	187.31 Å ² (-0.18)	3.49	195.44 Å ² (-0.03)	1.39	188.32 Å ² (-0.25)	2.50
<i>P.caerulea</i>	197.80 Å ² (-0.16)	-1.40	187.32 Å ² (-0.18)	-0.10	195.21 Å ² (-0.15)	-0.91	188.51 Å ² (-0.15)	0.94
CCS Std Dev	0.27		0.05		0.26		0.22	
CCSRSD	0.13		0.02		0.17		0.23	
RMS Mass Error PPM	2.31		2.14		0.85		1.45	

Table 2. CCS errors obtained for all four Passiflora species and mass measurement errors 10 months after the study results in Table 1.

The corresponding UPLC-IM-MS drift time plot (ion mobility resolution) versus retention is shown in Figure 5. Here, the true complexity of the sample profiled is illustrated, where separation orthogonal to UPLC separation is obtained using ion mobility. The series of isobaric components between 8.0 and 12.0 minutes can be differentiated using ^{TW}CCSN₂. The unique, patented UNIFI mobility data viewer allows the displayed data to be saved as a bookmark, that can later be used to rapidly manually interrogate/investigate all of the *Passiflora* species profiled. The ^{TW}CCSN₂ values obtained are presented in the UNIFI Component Summary of isobaric candidates in Figure 6, where the observed retention time, observed collision cross section, observed drift time, and detector counts are shown for the ion mobility separated species. The information obtained can then be

added into the analysis method to target compounds of interest.

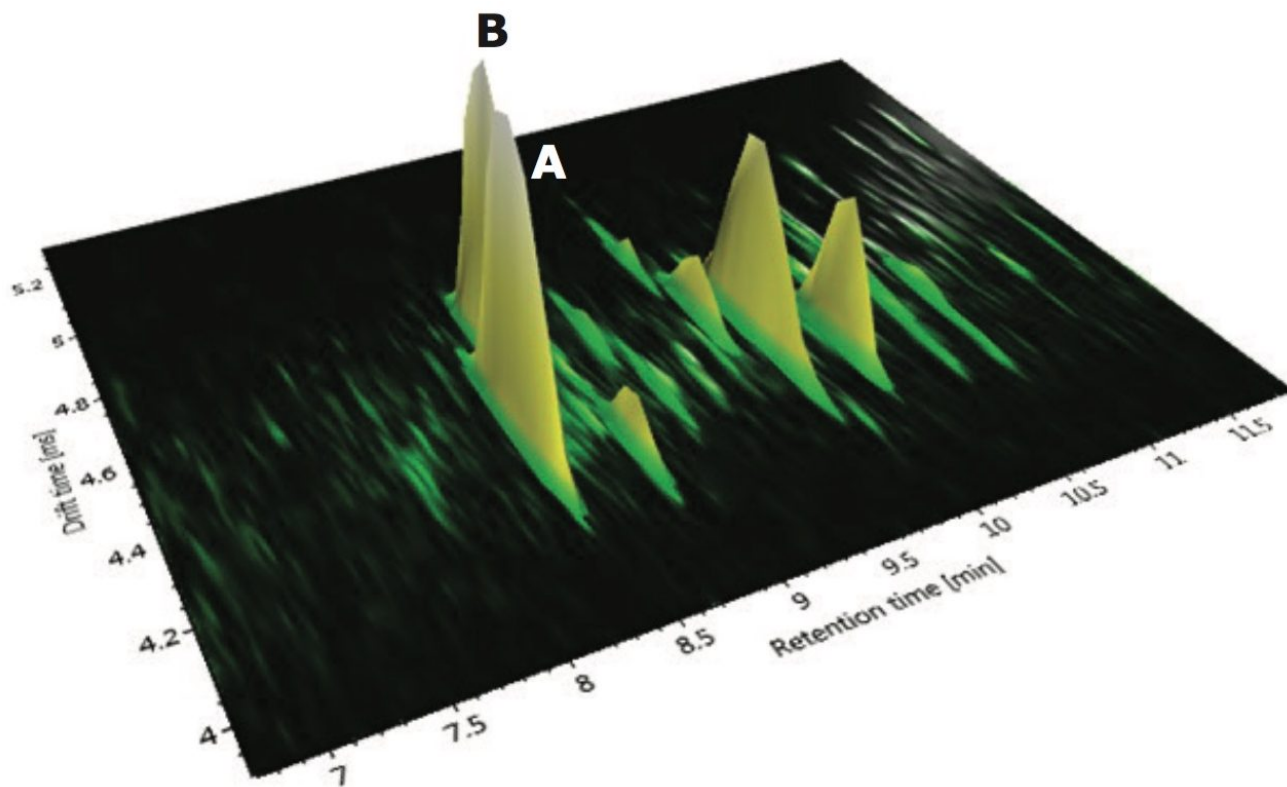


Figure 5. UPLC-IM-MS electrospray negative mode plot of drift time vs retention time for *Passiflora caerulea* (vitexin A and isovitexin B). The true complexity of the sample profiled is illustrated, where separation orthogonal to UPLC separation is obtained using ion mobility. The ion mobility separation profile for the extracted mass chromatogram of Figure 4 is shown; the series of isobaric components between 8.0 and 12.0 minutes can be differentiated using $^{TW}CCSN_2$.

Component Summary			View: "Accurate Mass Screening IMS"				
	Component name	Identification status	Observed RT (min)	Observed drift time (ms)	Observed collision cross section (\AA^2)	Detector counts	Expected collision
4984	Candidate Mass 431.0964	None	8.79	4.64	196.97	373	
4985	Candidate Mass 431.0965	None	9.14	4.40	189.28	535	
4986	Candidate Mass 431.0966	None	9.03	4.62	196.31	848	
4987	Candidate Mass 431.0966	None	10.45	4.66	197.37	119	
4988	Candidate Mass 431.0967	None	9.61	4.57	194.82	3209	
4989	Candidate Mass 431.0967	None	9.36	4.37	188.54	210	
4990	Candidate Mass 431.0970	None	8.84	4.27	185.46	2801	
4991	Candidate Mass 431.0972	None	10.54	4.35	187.96	766	
4992	Candidate Mass 431.0973	None	11.37	4.44	190.59	191	
4993	Candidate Mass 431.0975	None	10.51	4.82	202.55	186	
4994	Candidate Mass 431.0983	None	9.79	4.49	192.08	21753	

Figure 6. UNIFI Component Summary of isobaric candidates eluting between 8.70 minutes and 11.40 minutes, where the observed retention time, observed collision cross section, observed drift time, and detector counts are shown for the ion mobility separated species in Figure 5.

For Figure 7 the UPLC-IM-MS drift time plot versus retention time for *Passiflora alata* is shown. The ion mobility separation profile for vitexin/isovitexin is presented, it can be seen that these two isomeric marker flavonoids have been determined to be present in *Passiflora alata*, where they can be detected and differentiated using ^{TW}CCSN₂ screening with ion mobility mass spectrometry.

Both vitexin/isovitexin were determined at the expected retention time with accurate mass measurement error of <5ppm and a collision cross section error of <0.5%. In previous studies, vitexin was not determined to be present in *Passiflora alata* but technology enhancements have enabled this identification to be made here. Previous studies using HPLC presented a small shoulder on the base of the chromatographic peak of isovitexin but even with accurate mass measurement, it was not possible to identify the vitexin peak since the species were isomeric. Also there was not sufficient sensitivity to identify the unique fragmentation profile of vitexin.

Further studies with enhancements in sensitivity and the use of the ACQUITY UPLC I-Class System, enabled vitexin to be partially chromatographically resolved and detected. However, the challenge remained to chromatographically resolve both pairs of marker glycosides. In this study where UPLC is combined with ion mobility separation, it was possible to develop a method that exploited the separation power of both techniques. UPLC parameters provide optimum separation of isovitexin and vitexin, while ion mobility parameters provide optimum separation of isoorientin and orientin. Orientin and isoorientin were not chromatographically resolved, but were resolved with ion mobility. This example shows how the combined peak capacities of chromatography and ion mobility can be used to provide the desired separation.

The benefits of ion mobility extend to reducing spectral complexity, as shown in Figure 8, where the conventional

retention time aligned multi-component precursor and fragment ion spectra, for a chromatographic peak vitexin (m/z 431.0983) generated at retention time 8.395 mins is shown. In addition to m/z 431.0983, many other ions are present in the spectrum.

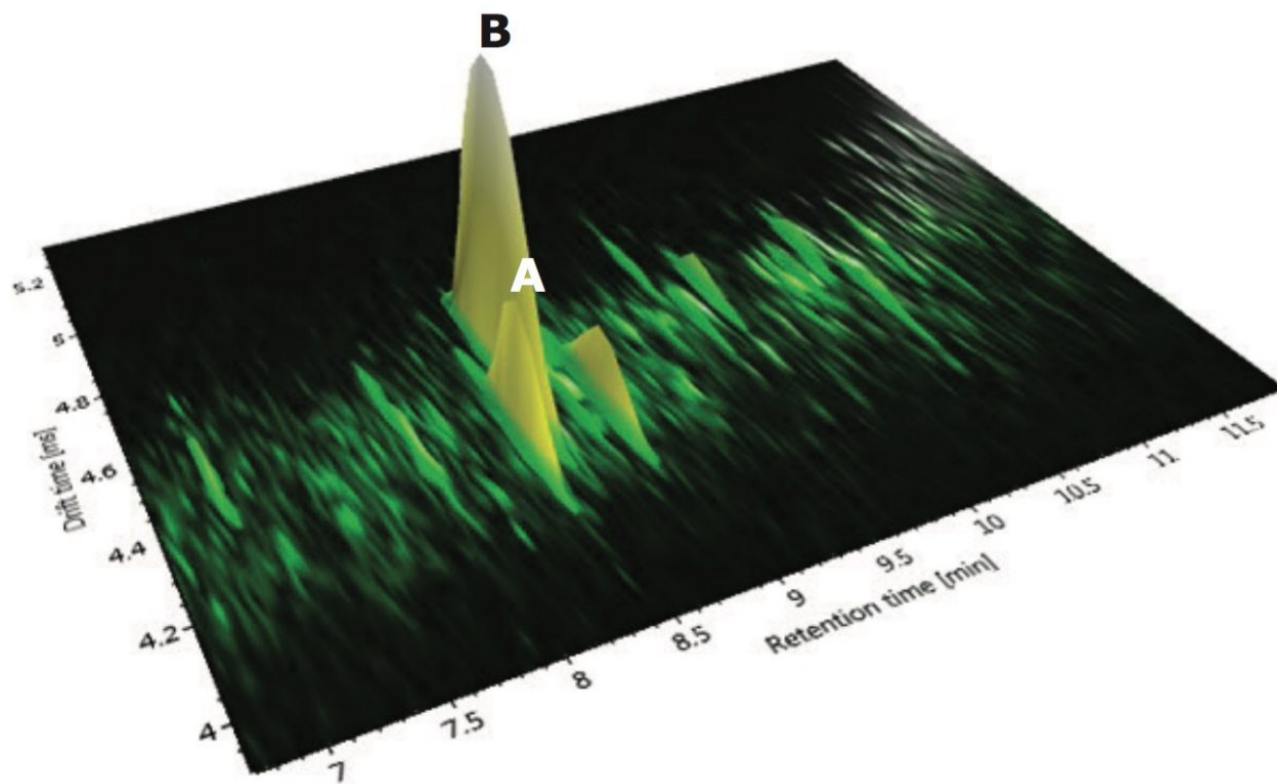


Figure 7. UPLC-IM-MS electrospray negative mode plot of drift time versus retention time for *Passiflora alata*. The ion mobility separation profile for vitexin and isovitexin is presented, as well as a series of minor isobaric components between 6.5 and 12.0 minutes can be which can be differentiated using $^{TW}CCSN_2$.

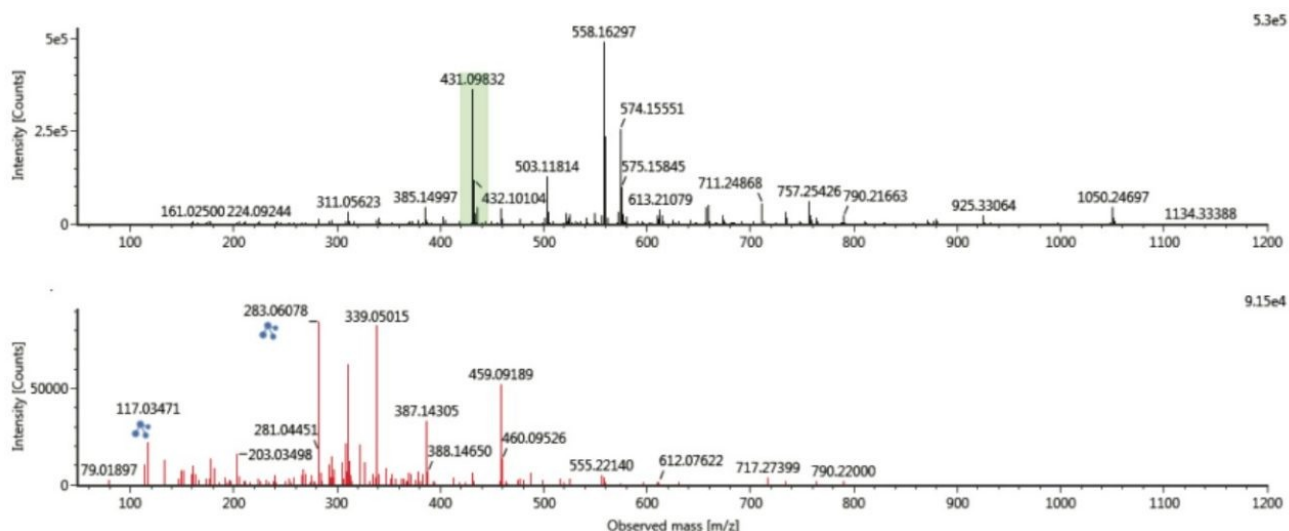


Figure 8. Conventional multi-component precursor and fragment ion spectra for peak vitexin (m/z 431) generated at retention time 8.395 mins.

However as can be seen in Figure 9, when the spectrum is derived at both retention time and drift time, the chromatographically coeluting ions are mobility resolved and the spectrum is “cleaned up” for both the precursor and ion mobility product ions. The result is a highly specific ion mobility product ion spectrum. Such specific product ion spectra are generated for all analytes detected in the sample analyzed, including unknowns and non-targeted compounds.

The UNIFI Component Summary for *Passiflora caerulea*, illustrating chromatographically coeluting isoorientin and orientin selected in the extracted mass chromatogram window, with the corresponding isoorientin precursor and ion mobility product ion spectra obtained. The 6C/8C glycoside pair orientin/isoorientin differ in retention time by 1.24 seconds. However, when analyzing real extracts, there is a small difference in retention time and the concentrations vary from species to species. In this study, we saw that the targeted species merge to form one peak. Mass measurement errors $<5\text{ppm}$ and CCS errors $<0.5\%$ are presented. The extracted mass chromatogram also shows the presence of a series of isobaric components between 7.0 and 11.0 minutes.

For marker glycoside pair (orientin/isoorientin), $187.65\text{\AA}^2/197.68\text{\AA}^2$ has been determined with respective CCS errors of 0% and 0.22%. From Figure 11 the UPLC-IM-MS of drift time plot versus retention time for *Passiflora caerulea* is presented. Here, the ion mobility separation profile for chromatographically coeluting isoorientin (peak marker illustrated) and orientin has been selected and automatically extracted using the Zoom to Component feature of the UNIFI Software.

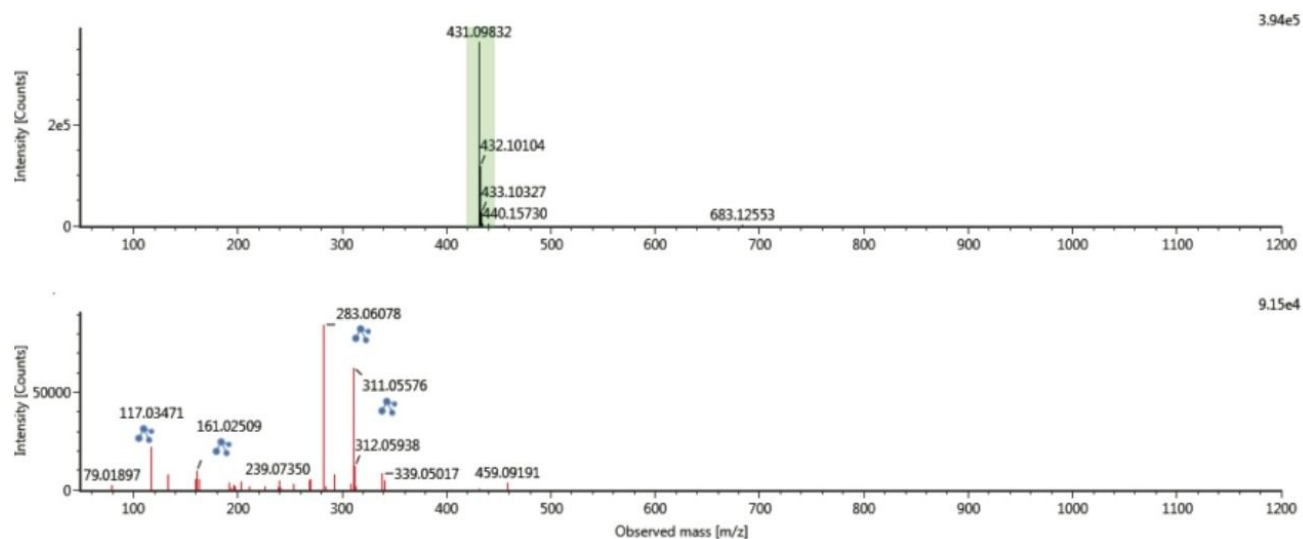


Figure 9. Single component precursor and ion mobility product ion spectrum for vitexin resolved from chromatographically coeluting components using ion mobility, generated at retention time 8.395 mins and drift time 4.27 ms.

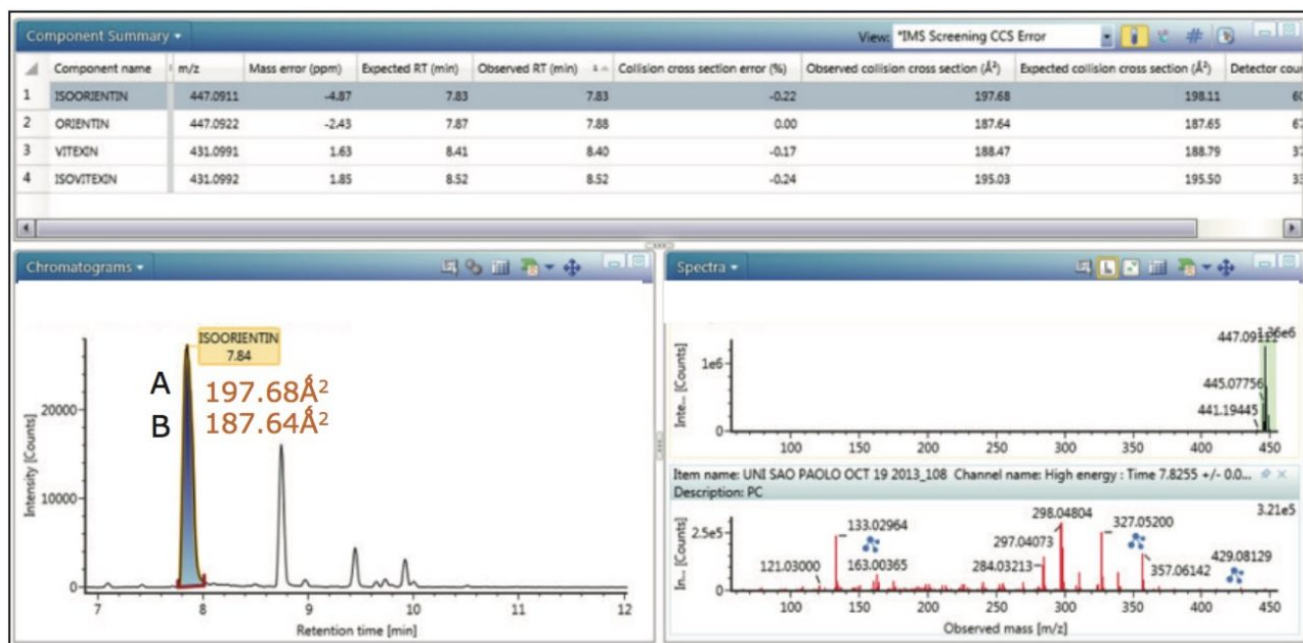


Figure 10. UNIFI Component Summary for *Passiflora caerulea*, illustrating coeluting isoorientin and orientin selected in the extracted mass chromatogram, with the corresponding precursor and ion mobility product ion spectra obtained. Mass measurement error <5 ppm, CCS errors <0.5% are presented. The extracted mass chromatogram shows the presence of a series of isobaric components between 7.0 and 11.0 minutes.

Orientin Isoorientin 187.65Å² 197.68Å²

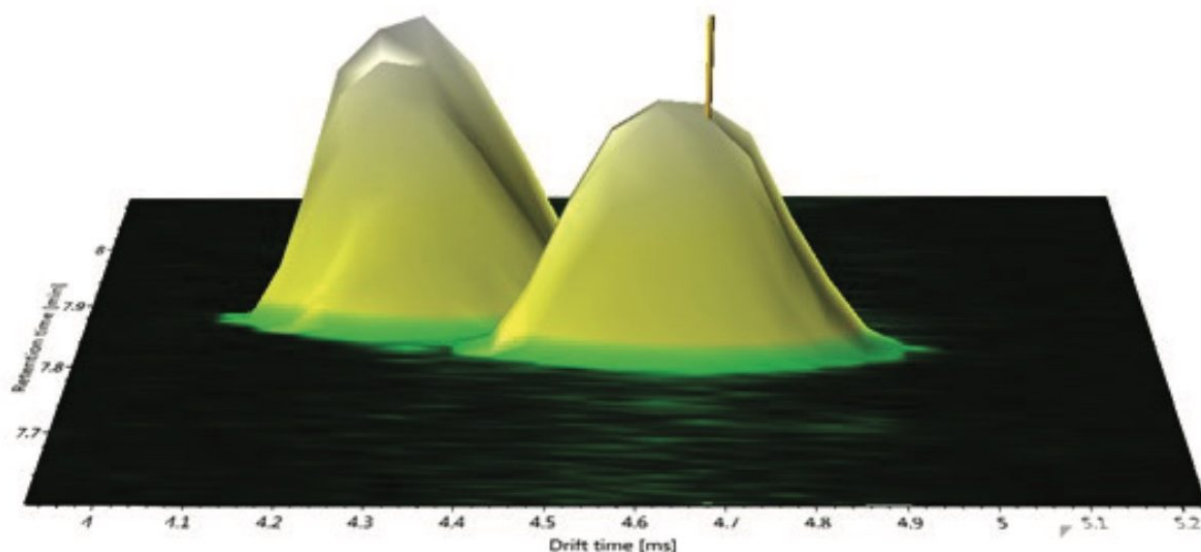


Figure 11. UPLC-IM-MS electrospray negative mode plot of drift time (ion mobility resolution) vs retention time for *Passiflora caerulea*. The ion mobility separation profile for chromatographically coeluting isoorientin and orientin is presented in the UNIFI Software's Zoom to Component function.

The results obtained demonstrate that it is possible to distinguish the marker isomer pairs for the extracts analyzed using ^{TW}CCSN₂ measurements. When comparing the expected and the measured collision cross sections, the ^{TW}CCSN₂ measurement errors were typically <0.5%. In addition, it has been possible to acquire the "cleaned up" ion mobility product ion spectra, that are mobility resolved from coeluting components. In the case of isoorientin/orientin (which coeluted chromatographically and had the same product ions), ion mobility resolution enabled ion mobility product ion ratios to be observed. For the first time, unique collision cross section measurements and corresponding isomer fragmentation spectra have been obtained.

Figures 12 and 13 show the resolved ion mobility product ion spectra for isoorientin and orientin (chromatographically coeluting) determined to be present in *Passiflora caerulea*. Both isomers produce the same product ions, however it can be seen that if the correct collision energy profile is applied, unique product ion ratios can be induced for the individual isomers.

The ion mobility product ion spectra and routes of the 6C and 8C glycosides have previously been elucidated.⁴ The unique ion mobility product ion ratios at m/z 284/285 and m/z 297/298/299 can be used to characterize the isomer pair, in conjunction with unique ^{TW}CCSN₂ measurements. In the case of isoorientin, the product ion ratios are m/z 284 < m/z 285, and m/z 297 < m/z 298 > m/z 299. Whereas for orientin, the ion mobility product ion ratios are m/z 284 > m/z 285, and m/z 297 > m/z 298 < m/z 299. For isovitexin and vitexin the unique product ion ratios

at m/z 281/282/283/284 can be used to characterize the isomer pair in conjunction with unique CCS measurements. In the case of isovitexin, the ion mobility product ion ratios are m/z 281 > m/z 282 > m/z 284. Whereas for vitexin, the ion mobility product ion ratios are m/z 281 > m/z 282 < m/z 284. In both cases the ion mobility product ion m/z 283 forms the base peak ion of the characteristic product ion clusters.

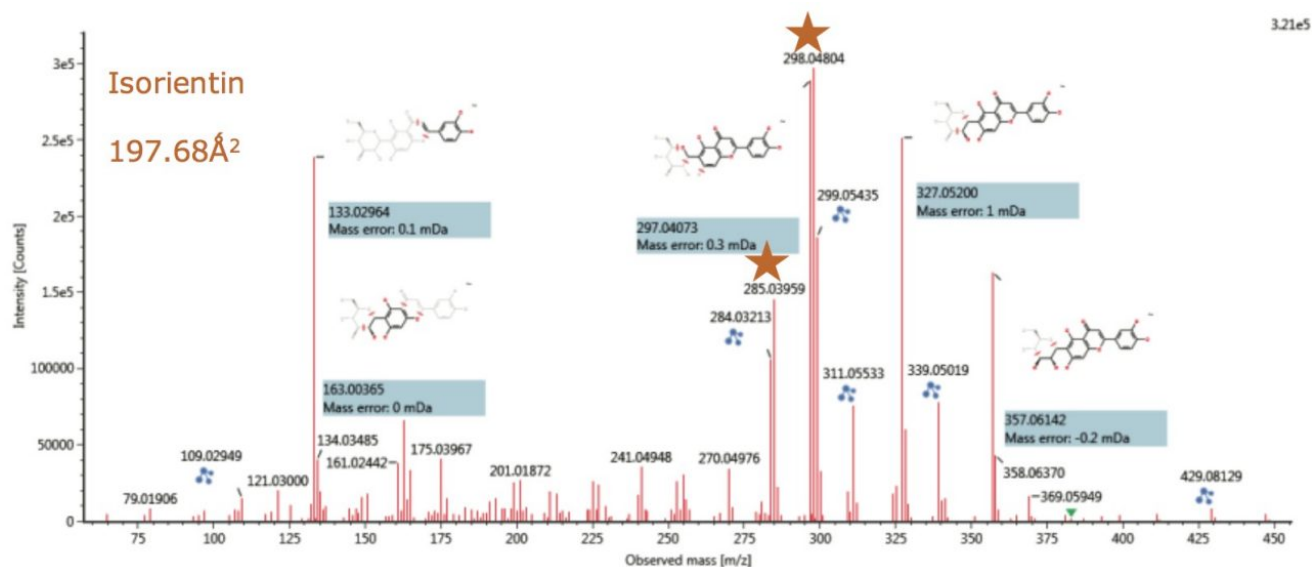


Figure 12. Ion mobility resolved product ion spectrum for isororientin (chromatographically coeluting with orientin) determined to be present in *Passiflora caerulea*.

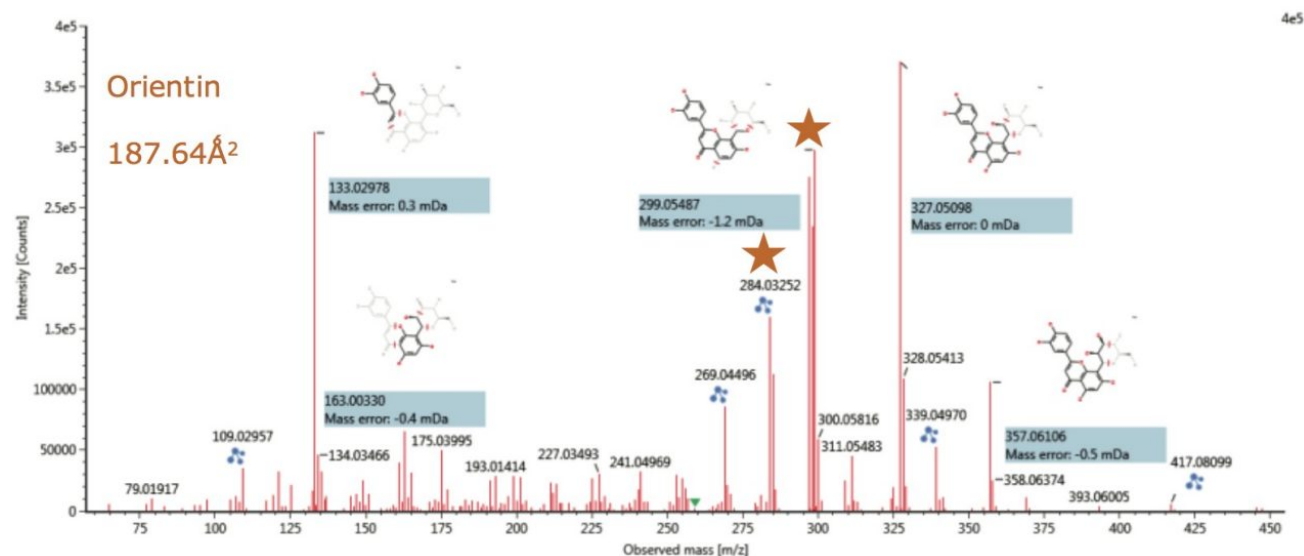


Figure 13. Ion mobility resolved product ion spectrum for orientin (chromatographically coeluting with isororientin) determined to be present in *Passiflora caerulea*.

Also it can be seen that the proposed fragmentation pathway can be determined using UNIFI Software, where

accurate mass measurement <5 ppm has been routinely obtained. The enhanced peak capacity produced in IMS experiments enables the fragmentation spectra produced to be resolved from coeluting structurally related flavonoids present in the extract, allowing this characteristic information to be used with confidence.

The corresponding ion mobility spectral resolution obtained, where the ion mobility drift plots for m/z versus drift time can be seen, is presented in Figures 14 and 15. In Figure 14, drift plot A shows all the ions detected at retention time 7.83 minutes, and drift plot B shows the corresponding retention time-aligned fragments produced from the precursor ions that are chromatographically coeluting. The observed precursor ion of isoorientin is automatically highlighted in green, and the corresponding expected fragment ions are shown in blue in plot B. UNIFI Software has been specifically designed to intelligently visualize ion mobility data. From Figure 15, it can be seen that it is possible to select only the observed precursor ion and the ion mobility product ions being produced at a specific m/z and drift time. In the case of isoorientin observed in *Passiflora caerulea*, the ion mobility drift plot for all of the ions detected at retention time 7.83 minutes and drift time 4.67 milliseconds can be seen.

Commercially pioneered by Waters, MS^E ion fragmentation takes advantage of the duty cycle and benefits of time-of-flight technology. This has facilitated the acquisition of accurate fragment ion information, allowing the analyst to obtain structural elucidation and confirmation information for 10,000's of compounds in a single acquisition. HDMS^E ion mobility product ion formation further enhances the specificity of retention time aligned MS^E data acquisition through the addition of drift time alignment. Using ion mobility separation it is possible to isolate the precursor ions and also those ions produced during the collision induced dissociation process. HDMS^E ion mobility product ion acquisition offers an unparalleled approach to bringing the specificity of MS/MS to all compounds detected in an acquisition. As can be seen from Figures 12 and 13, HDMS^E ion mobility product ion acquisitions can provide greater selectivity than conventional MS/MS.

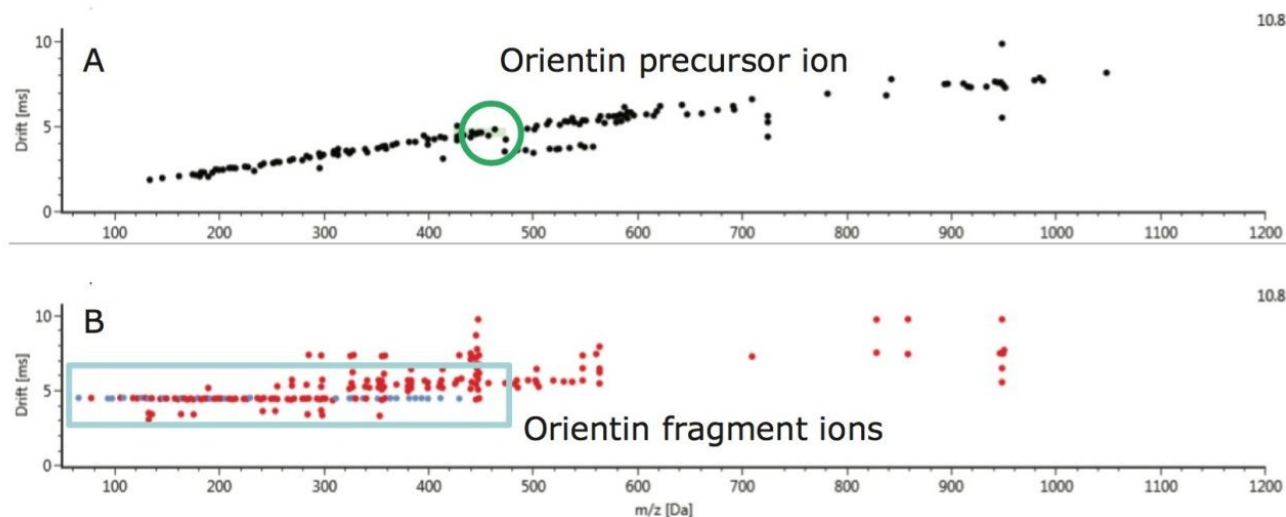


Figure 14. Ion mobility drift plot of *Passiflora caerulea*, for all ions detected at retention time 7.83 minutes. Precursor ions are shown in plot A and retention time aligned fragments in plot B.

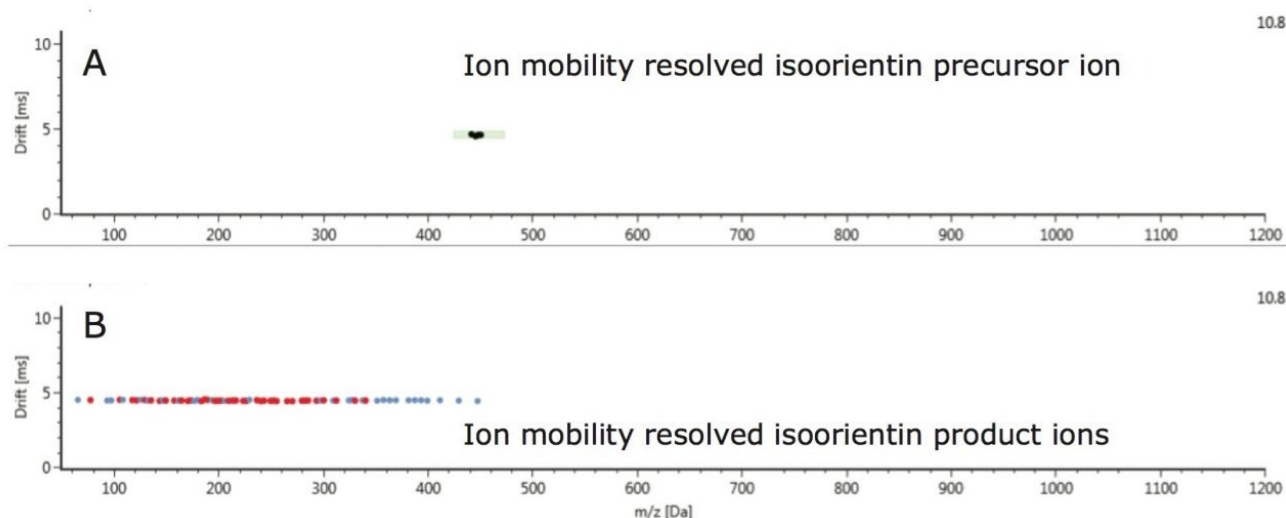


Figure 15. Ion mobility drift plot of *Passiflora caerulea*, for all ions detected at retention time 7.83 minutes and drift time 4.35 milliseconds. Precursor ions are shown in plot A and retention time/drift time aligned fragments in plot B.

Conclusion

- Vitexin, isovitexin, isoorientin, and orientin C-glycosyl flavonoids have been uniquely profiled using ion mobility ^{TW}CCSN₂ screening and their presence was determined in the four *Passiflora* species profiled.
- The ACQUITY UPLC I-Class System can be used with ion mobility mass spectrometry to routinely screen and

authenticate phytochemical makeup with unmatched specificity that cannot be provided by mass accuracy alone.

- Collision cross section (CCS) measurements of <0.5% have been obtained using a routine workflow.
- Isomeric C-glycosyl flavonoids have been distinguished using ion mobility mass spectrometry and CCS measurement.
- $^{TW}CCSN_2$ screening can be used to profile sample makeup and uniquely differentiate isomeric flavonoid composition ensuring that flavonoids are not missed due to chromatographic coelution.
- It is possible to acquire the individual isomeric fragmentation spectra of coeluting isomers and characterize unique fragment ion ratios.
- $^{TW}CCSN_2$ values have been generated for more than 10,000 analytes, known/unknowns in a single acquisition.
- The selectivity of $^{TW}CCSN_2$ can be utilized when retention times shift due to matrix, or when alternative chromatography methods are used.
- HDMS^E ion mobility product ion acquisitions offer an unparalleled approach, bringing the specificity of MS/MS to all compounds detected in an acquisition and can provide greater selectivity than conventional accurate mass MS/MS.

References

1. M L Zeraik, J H Yariwake. Quantification of isoorientin and total flavonoids in *Passiflora edulis* fruit pulp by HPLC-UV/DAD. *Microchemical Journal*. 96 (1): 86–91; 2010.
2. F Ferreres, C Sousa, P Valentão, P B Andrade, R M Seabra, and Á Gilizquierdo. New C-deoxyhexosyl flavones and antioxidant properties of *Passiflora edulis* leaf extract. *J Agric Food Chem*. 55: 10187–10193; 2007.
3. P Noriega, D De Freitas Mafud, M Strasser, E T M Kato, E M Bacchi. *Passiflora alata* Curtis: A Brazilian medicinal plant. *Boletín Latinoamericano y del Caribe de Plantas Medicinales y Aromáticas*. 10 (5): 398–413; ISSN 0717 7917; 2011.
4. S M Zucolotto, C Fagundes, F H Reginatto, F A Ramos, L Castellanos, C Duque, and E P Schenkel. Analysis of C- glycosyl Flavonoids from South American *Passiflora* Species by HPLC-DAD and HPLC-MS. *Phytochem Anal*. 23: 232–239; 2012.

5. C A M Pereira, J H Yariwake, and M McCullagh. Distinction of the C-glycosylflavone isomer pairs orientin/isoorientin and vitexin/isovitexin using HPLC-MS exact mass measurement and in-source CID. *Phytochem Anal.* 16: 295–301; 2005.
6. M McCullagh, R Rao, C A M Pereira, and J H Yariwake. Profiling and quantitation of c-glycosidic marker flavonoids in natural products using UPLC time of flight mass spectrometry. *5th International Symposium on Recent Advances In Food Analysis* (RAFA 2011). November, 2011.
7. M McCullagh, C A M Pereira, J H Yariwake. High throughput characterization of C-glycosidic flavonoids from Brazilian *Passiflora* species using LC-MS exact mass measurement and in-source CID. *19th Montreux Symposium, Montreux, Switzerland*, 6–8 November, 2002.
8. R E March, E G Lewars, C J Stadey, X Miao, X Zhaob, C D Metcalfe. A comparison of flavonoid glycosides by electrospray tandem mass spectrometry. *International Journal of Mass Spectrometry.* 248: 61–85; 2006.
9. The use of collision cross section measurements (CCS) in food and environmental analysis. Waters Technical Note No. 720005374en, April 2015.

Featured Products

- [ACQUITY UPLC I-Class PLUS System <https://www.waters.com/134613317>](https://www.waters.com/134613317)
- [Ion Mobility Mass Spectrometry <https://www.waters.com/134656158>](https://www.waters.com/134656158)
- [UNIFI Scientific Information System <https://www.waters.com/134801648>](https://www.waters.com/134801648)
- [SYNAPT G2-Si Mass Spectrometry <https://www.waters.com/134740653>](https://www.waters.com/134740653)

Available for purchase online

- [ACQUITY UPLC BEH C18 Column, 130Å, 1.7 µm, 2.1 mm X 100 mm, 1/pkg <https://www.waters.com/waters/partDetail.htm?partNumber=186002352>](https://www.waters.com/waters/partDetail.htm?partNumber=186002352)

720005424, June 2015



©2019 Waters Corporation. All Rights Reserved.