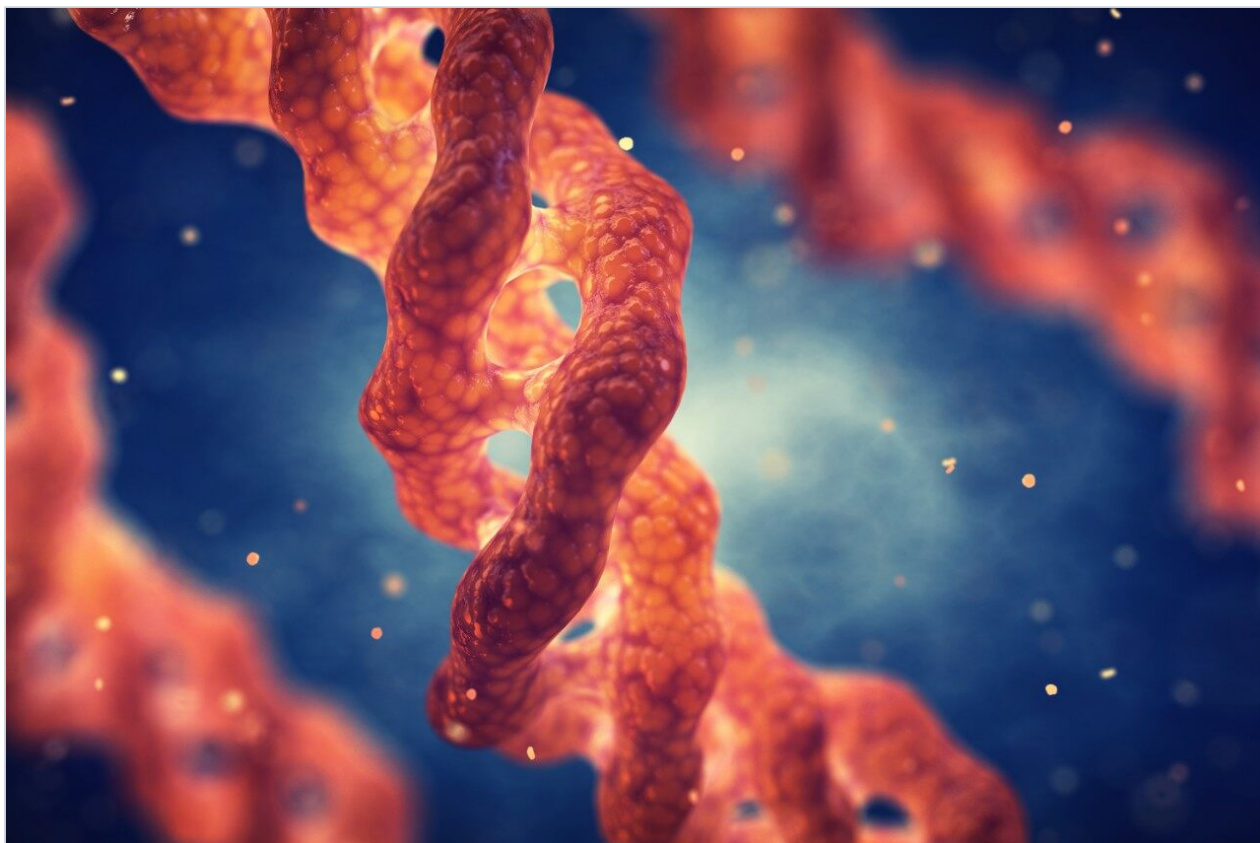


Note d'application

A Qualitative and Quantitative Ion Mobility MS-Enabled, Data-Independent SILAC Workflow

Lee A. Gethings, Robert Tonge, Andrew J. K. Williamson, Anthony D. Whetton

Waters Corporation, School of Cancer and Imaging Sciences, Manchester Academic Health Science Centre, The University of Manchester



For research use only. Not for use in diagnostic procedures.

Abstract

This application note demonstrates the functionality of hardware and software, along with the accuracy and precision obtained for the quantitative analyses of SILAC-labeled samples using LC/IM-DIA-MS (HDMS^E) on a SYNAPT G2-S Mass Spectrometer.

nanoACQUITY UPLC applications readily transfer to the ACQUITY UPLC M-Class System

Benefits

- Illustration of the hardware and software functionality required to perform a proteome SILAC experiment
- Demonstration of SILAC data acquisition using data-independent analysis (DIA)
- Demonstration of experimental accuracy and precision with complex mammalian SILAC samples

Introduction

Stable isotope labeling with amino acids in cell culture (SILAC) is a popular metabolic labeling technique for mass spectrometric (MS)-based quantitative proteomics.¹ In SILAC, cell cultures to be compared are grown in culture medium containing either naturally occurring, or stable-isotope labeled amino acids. Over several divisions, the amino acids are incorporated into cellular proteins, enabling the comparison of amounts of particular proteins from one cell type to its comparator.

In a comparative shotgun proteomics experiment, differentially labeled samples are mixed early in the experimental process and analyzed together by LC-MS/MS. The labeling does not affect the chemical properties of peptide; hence, they coelute from the LC column and can be analyzed simultaneously in the mass spectrometer. The peptides of the differentially labeled samples can be accurately quantified relative to each other to determine relative protein abundances.

To date, the SILAC method has been predominantly applied to analyze cell cultures using data-dependent analysis (DDA) MS/MS techniques. However, DDA approaches are limited by issues with chimericity, a phenomenon likely to be more problematic in the increasingly complex samples observed in SILAC experiments.² In this investigation, ion mobility (IM)-enabled data-independent analysis (DIA) has been utilized to quantify SILAC-labeled mutant embryonic mouse cells.

This application note demonstrates the functionality of hardware and software, along with the accuracy and precision obtained for the quantitative analyses of SILAC-labeled samples using LC/IM-DIA-MS (HDMS^E) on a SYNAPT G2-S Mass Spectrometer

Experimental

The sample investigated was a whole-cell lysate from immortalized murine bone marrow-derived pro-B-cell line which expressed a Jak2 V617F mutation. The Jak2 V617F mutation has been identified in 96% of patients with polycythaemia vera, a myeloproliferative blood disorder in which the bone marrow makes too many red blood cells, leading to overly viscous blood. Investigation of proteomic and phosphoproteomic alterations in this cell line model will help to understand the disease, its genesis and progression, and potentially highlight opportunities for drug intervention. For this study, to illustrate the capacity to perform accurate SILAC experiments, Jak2 mutant mouse embryonic cells were SILAC-labeled with either naturally occurring light lysine, or heavy ¹³C₆-lysine. Samples were digested with trypsin, and combined at a ratio of approximately 1:1 based on protein assay of the lysed cells.

LC conditions

System;	nanoACQUITY UPLC
Columns:	Symmetry C ₁₈ 180 µm x 20 mm 2G trap, 5 µm and BEH C ₁₈ 75 µm x 150 mm, 1.7 µm NanoEase analytical
Column temp.:	35 °C
Flow rate:	300 nL/min
Mobile phase A:	Water (0.1% HCOOH)
Mobile phase B:	Acetonitrile (0.1% HCOOH)
Gradient:	3% to 40% B in 90 min

Injection volume: 1 μ L

MS conditions

Mass spectrometer: SYNAPT G2-S

Ionization mode: ESI (+) at 3 kV

Cone voltage: 25 V

Acquisition mode: HDMS^E 50 m/z to 2000 m/z both functions (low and elevated energy)

Acquisition rate: 2 Hz/function

Collision energy: 5 eV (low energy function) and ramped from 25 eV to 45 eV (elevated energy function)

Resolution: 25,000 FWHM

IMS T-Wave velocity: 700 m/s

IMS T-Wave pulse height: 40 V

Data acquisition and processing

ProteinLynx Global SERVER Software

Results and Discussion

A sample with estimated relative protein amounts was analyzed to investigate and demonstrate the utility of an HDMS^E acquisition for the analysis of SILAC-labeled samples. This was achieved by combining tryptic digests of light lysine-labeled and heavy lysine-labeled mouse cell line samples. As the cell types are

identical, the relative abundance of all quantified proteins should be approximately the same, tolerating for experimental variability introduced by cell harvesting, lysis, and liquid handling.

The workflow of the complete process is shown in Figure 1, starting with the metabolic labeling of the samples, combining and digesting them, followed by the LC-MS analysis using either MS^E or HDMS^E, and finally the qualitative and quantitative analyses using ProteinLynx Global SERVER Software.

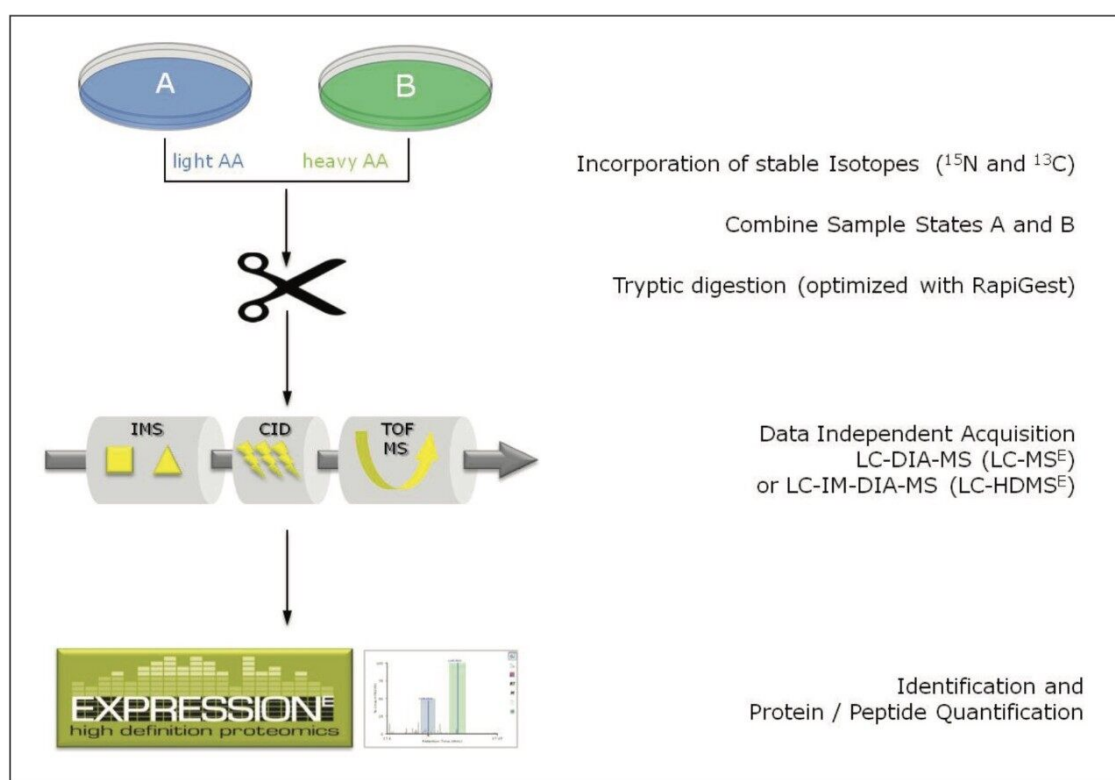


Figure 1. Analytical and informatics SILAC LC/IM-DIA-MS workflow.

In this instance, the data were acquired in LC-HDMS^E mode, an unbiased mobility assisted TOF acquisition method, switching between low and elevated energy on alternate scans, and initially correlating precursor and product ions by means of both retention and drift time alignment, as shown in Figure 2. An additional level of correlation of precursor and product ions is achieved during the searching of the processed data.³

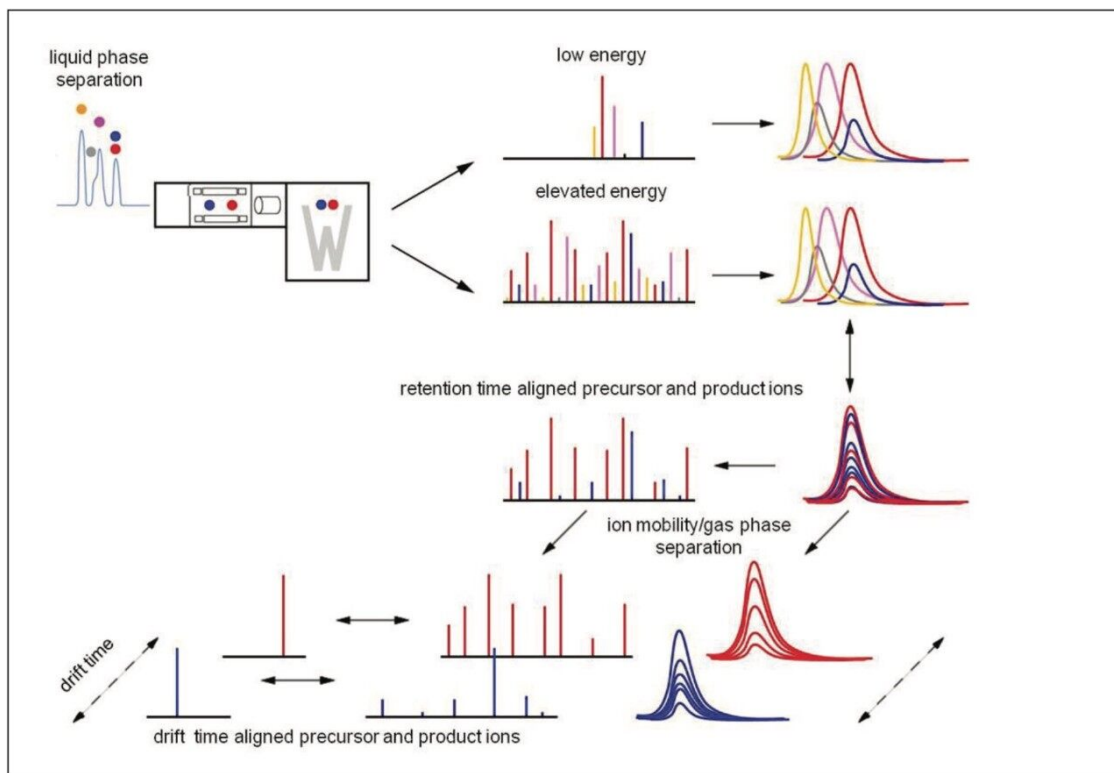


Figure 2. LC/IM-DIA-MS (HMDS E) acquisition principle.

Searching and quantifying SILAC-labeled peptides is achieved using modification (reagent) groups, as shown in Figure 3. In this particular example, only the K (lysine)-containing peptides were labeled. An HDMS^E identification example is shown in Figure 4. The top left panel illustrates a labeled, charge state reduced and deisotoped peptide pair, displaying an abundance ratio of approximately 1:2, and eluting within a very small chromatographic window smaller than 0.02 minute. The two middle panels represent the complete yⁿ annotated DIA spectra of the light and heavy labeled variant of the peptide. Note that the ratio of the ions is preserved at the product ion level, providing an additional level of relative peptide and protein abundance validation. Details of the product ion spectra are shown in the inset.

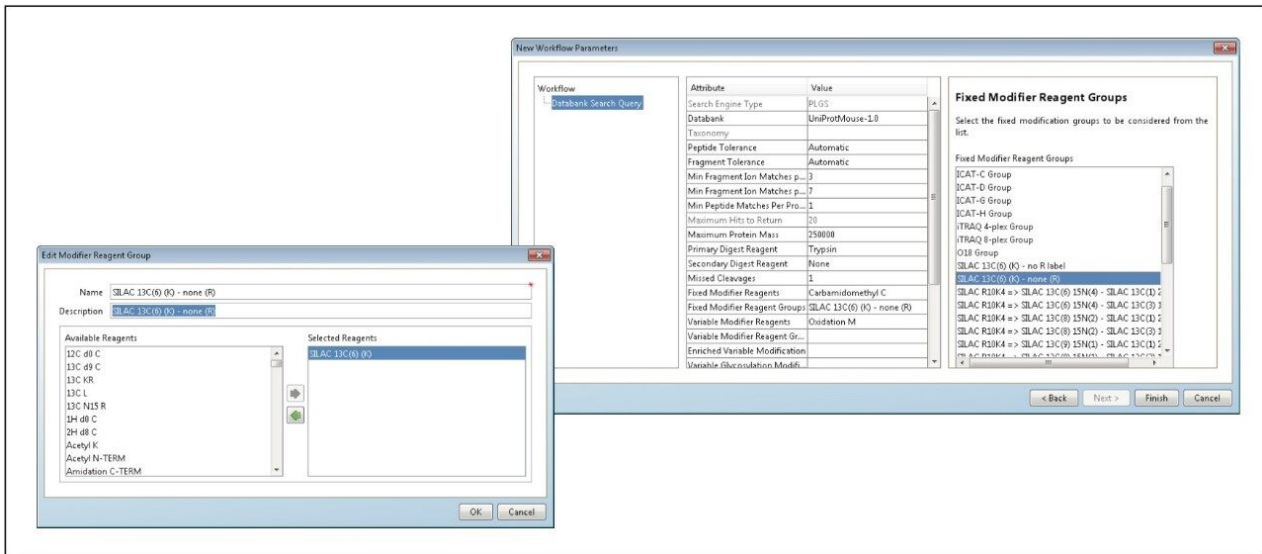


Figure 3. Creation (front) and application (back) of modification/reagent groups for qualitative and quantitative analyses of labeled peptides.

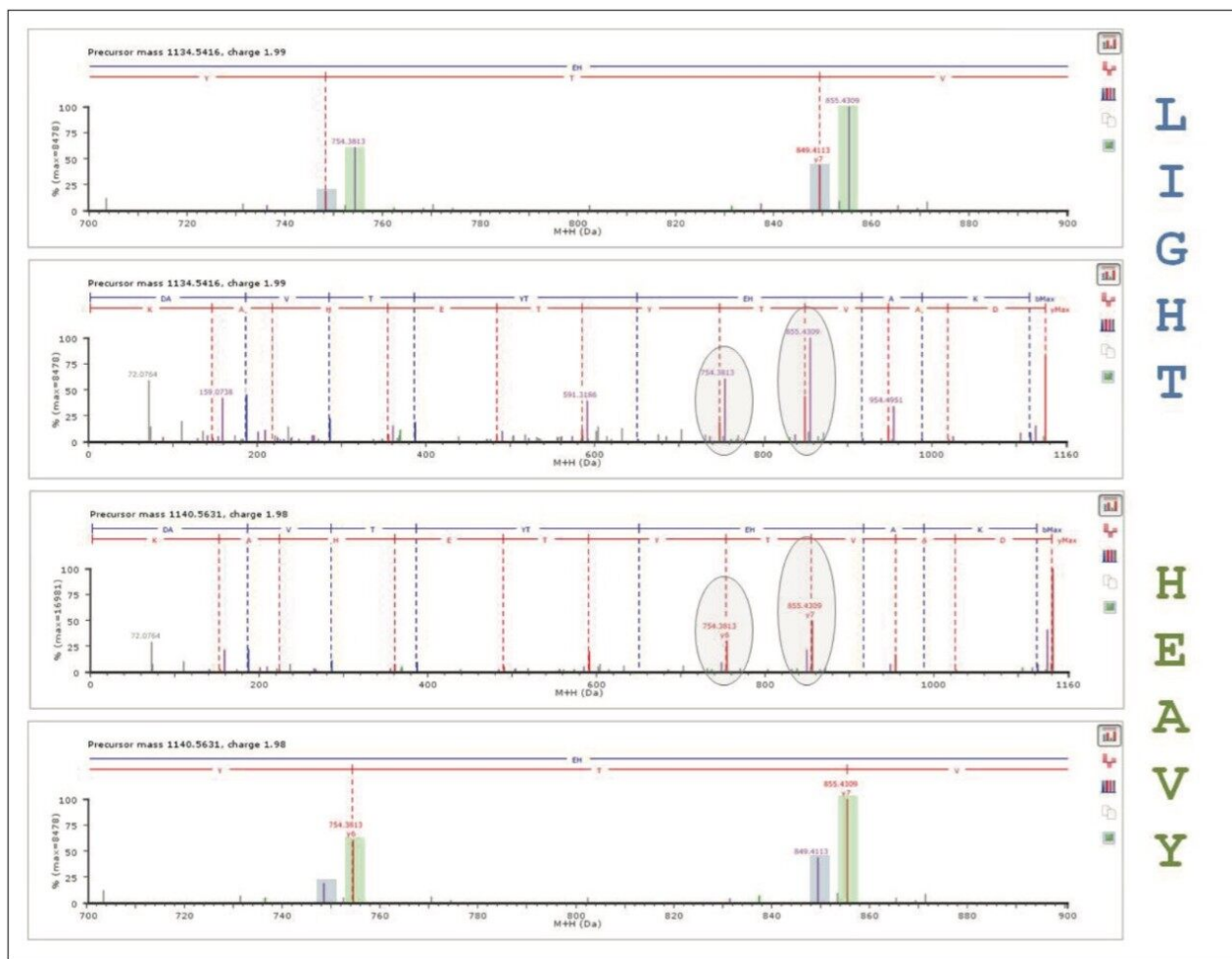


Figure 4. Identification example of a labeled-SILAC pair, illustrating a low energy MS1 precursor pair (top left), the sequence annotation of the light and heavy variant of the peptide of interest (two middle panes, respectively), and spectral detail (insets). Color legend: red = y' ion; blue = b ion; magenta = co-eluting identified ion; gray = non-identified ion.

The qualitative results are automatically tagged with the modification group information, and quantitatively analyzed by the Expression algorithm for ProteinLynx Global SERVER that offers a probable framework for the quantification of peptides and proteins.⁴

For example, Figure 4 shows the measured intensities and ratio values for the K (lysine)-labeled peptides that can be used for the quantification of the protein of interest. Here, the quantification algorithm calculated an in-ratio value of -0.92 ± 0.11 for Profilin-1, which was identified on the basis of a total of 10 peptides with a precursor and product ion RMS mass error of 3.2 and 4.2 ppm, respectively.

Peptide	application note_heavy/1 Mass	application note_light/1 Mass	application note_heavy/1 Int	application note_light/1 Int	application note_heavy/1 application note_light/1 Ratio
SSFFVNGLTGGQK	1460.7839	1454.7638	40159	16863	2.3814862
TFVSIPTAEVGVLVGK	1622.9459	1616.9258	70623	27178	2.5985355
TLVLLMGK	880.5631	874.543	5003	2332	2.1453688

Figure 5. Expression tabular results overview of the intensities of the quantified peptides of an example protein, including the calculated heavy/light ratio values.

The protein quantification results are summarized in Figure 6, showing a distribution with a median and average value of 0.47 and 0.48, respectively. The variance of the ln ratio of the distribution equals 0.05. As expected, the majority of the proteins exhibit the same fold-change. Approximately 80% of the data exhibited a relative fold-change value between 0.4 and 0.6, which differs from the expected ratio of approximately 1:1. However, this data is not normalized as ordinarily done in this type of experiment. These data distributions were further supported by additional measurements not shown, comparing samples at approximate ratios of 1:5 and 1:10.

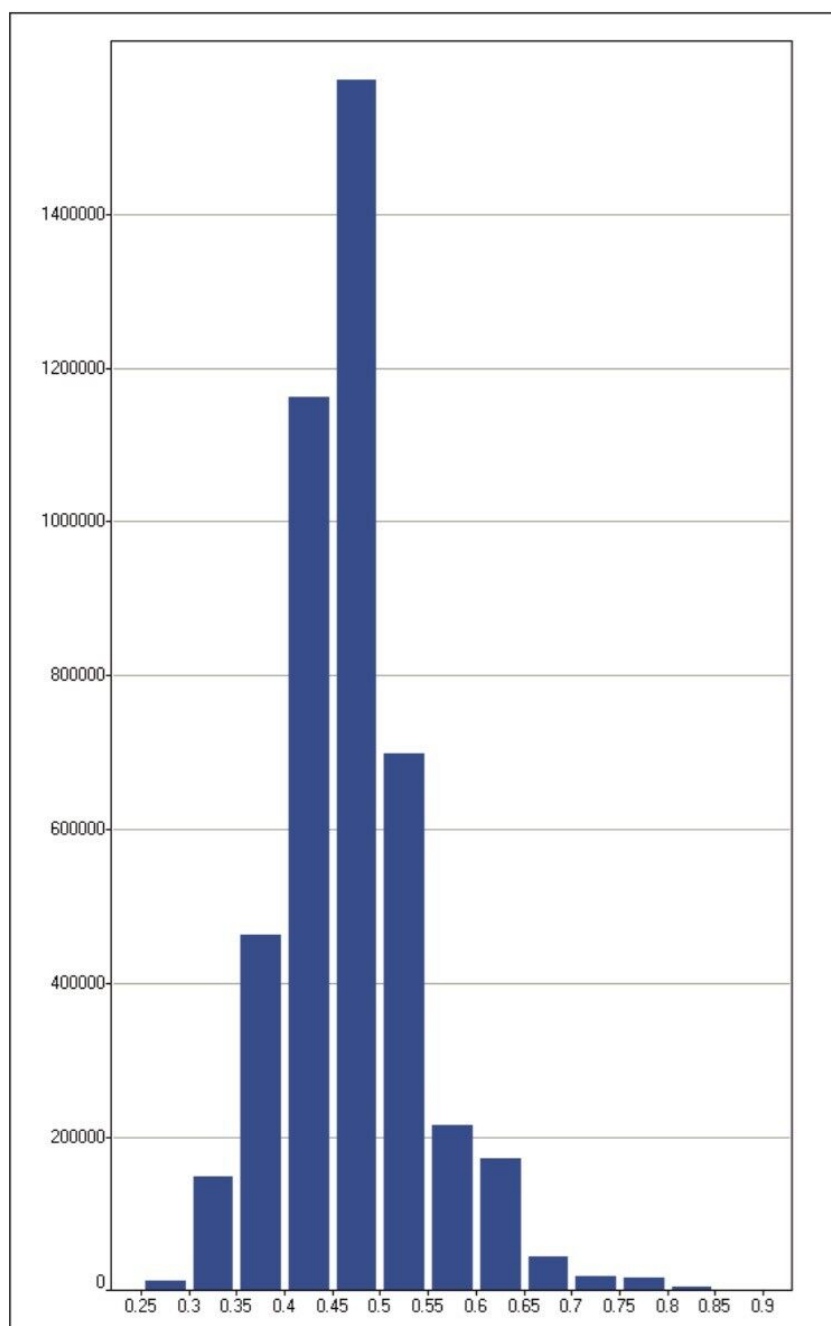


Figure 6. Light/heavy ratio distribution of the Expression-quantified metabolically/SILAC- labeled proteins.

Other examples of SILAC-based investigations can be seen in published references.^{5,6}

Conclusion

- MS^E and HDMS^E acquisitions using SYNAPT G2-S can be routinely applied successfully for SILAC-based quantitation studies.
- ProteinLynx Global SERVER and its Expression algorithm allows processing, quantification, and seamless visualization of ion mobility data.

References

1. Ong, *et al.* Stable isotope labeling by amino acids in cell culture, SILAC, as a simple and accurate approach to expression proteomics. *Mol Cell Proteomics*. 2002; 1:376-386.
2. Houel, *et al.* Quantifying the impact of chimera MS/MS spectra on peptide identification in large-scale proteomics studies. *J Proteome Res*. 2010 Aug 6; 9(8):4152-60.
3. Li, *et al.* Database searching and accounting of multiplexed precursor and product ion spectra from the data independent analysis of simple and complex peptide mixtures. *Proteomics*. 2009; 9:1696-719.
4. Richardson, *et al.* A probabilistic framework for peptide and protein quantification from data-dependent and data-independent LC-MS proteomics experiments. *OMICS*. 2012; 16:468-82.
5. Huang, *et al.* Software for quantitative proteome analysis using stable isotope labeling and data independent acquisition. *Anal Chem*. 2011; 83:6971-9.
6. Geromanos, *et al.* Using ion purity scores for enhancing quantitative accuracy and precision in complex proteome samples. *Anal Bioanal Chem*. 2012; 404:1127-39.

Featured Products

ACQUITY UPLC M-Class System <<https://www.waters.com/134776759>>

ProteinLynx Global SERVER (PLGS) <<https://www.waters.com/513821>>

720004725, June 2013

©2019 Waters Corporation. All Rights Reserved.