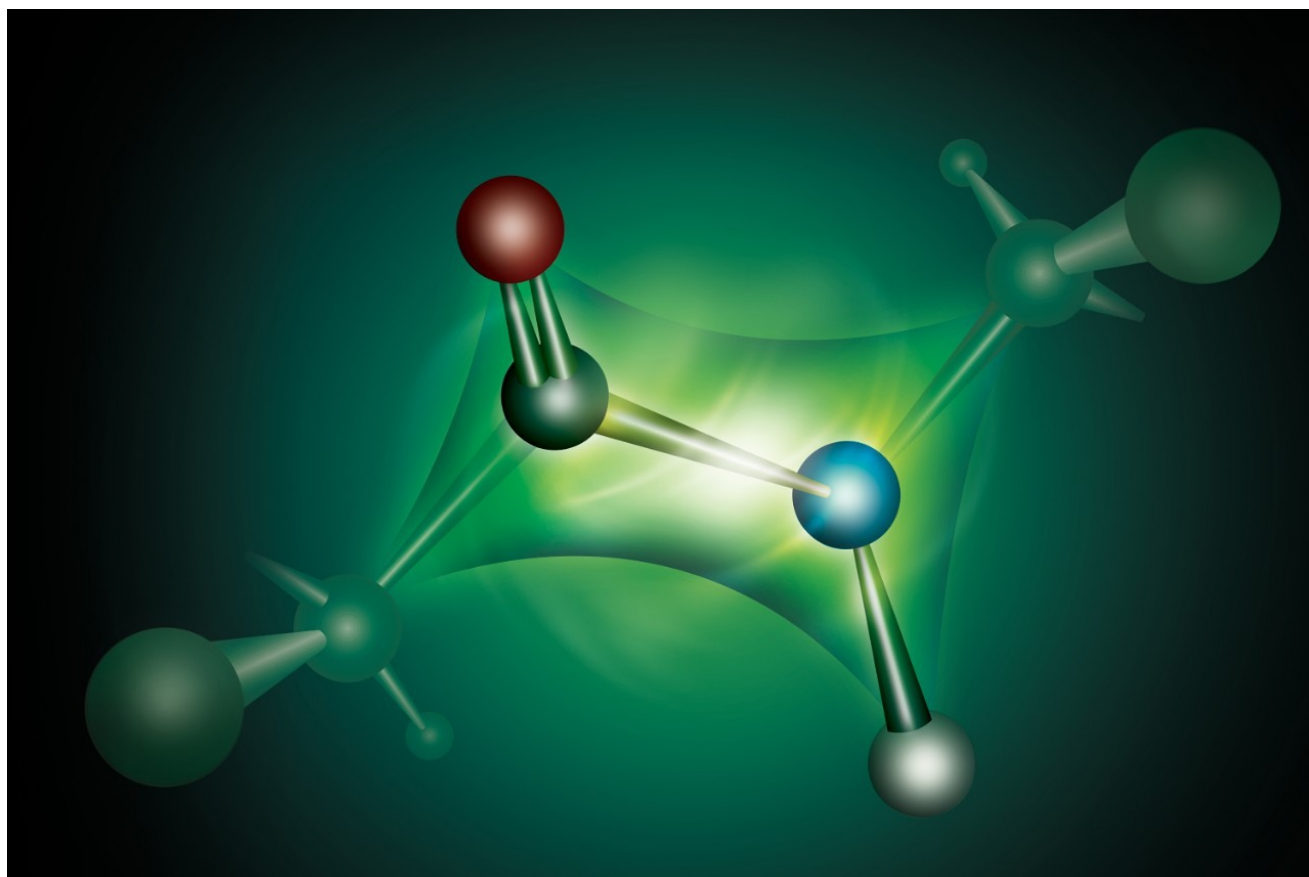


Increasing Peak Capacity in Reversed-Phase Peptide Separations with Charged Surface Hybrid (CSH) C₁₈ Columns

Matthew A. Lauber, Stephan M. Koza, Kenneth J. Fountain

Waters Corporation



Abstract

In this study, we evaluate Charged Surface Hybrid (CSH) C₁₈ column chemistry for peptide separations, expecting similar improvements in chromatographic performance since most peptides under commonly employed acidic conditions contain a positive charge. This work with peptides demonstrates that this novel stationary phase exhibits greater peak capacity, unique selectivity, and less dependence on MS signal suppression, strong ion pairing agents in peptide analysis.

Benefits

- Higher peak capacity RP peptide separations
- Compatibility with formic acid mobile phases
- Availability in both UPLC and HPLC particle sizes
- CSH130 C₁₈ is QC tested with a tryptic digest of cytochrome c

Introduction

Peptide separations are of paramount importance, whether studying proteins by bottom-up proteomics¹ or thoroughly characterizing biopharmaceuticals using peptide mapping.² The mixtures encountered in these analyses are inherently complex. Reversed-phase (RP) chromatography has become the separation mode of choice, as it offers relatively high resolving power and easily interfaces with mass spectrometry (MS).

The performance metric most relevant to gradient RP chromatography is peak capacity, or the maximum number of peaks that can fit into the gradient time.³ Interestingly, chemical modifications of a stationary phase, in addition to the use of smaller particle sizes, can significantly impact peak capacity. Charged surface hybrid (CSH) C₁₈ column chemistry, for example, is an evolution of the ethylene bridged hybrid (BEH) C₁₈ stationary phase⁴ as its surface is modified to contain a low-level positive charge in addition to the C₁₈ bonded phase.⁵ This modification has been shown to improve peak shapes, loading behavior, and peak capacities for small, ionized molecules.⁵⁻¹⁰

In this study, we evaluate CSH130 C₁₈ for peptide separations, expecting similar improvements in chromatographic performance since most peptides under commonly employed acidic conditions contain a positive charge. This work with peptides demonstrates that this novel stationary phase exhibits greater peak capacity, unique selectivity, and less dependence on MS signal suppressing, strong ion pairing agents when compared to the state-of-the-art in peptide analysis.

Experimental

LC conditions

System:	Waters ACQUITY UPLC H-Class Bio System with a 20 or 30 cm Column Heater (20 cm Column Heater for 150 mm columns and 30 cm Column Heater for 250 mm columns)
Detection:	ACQUITY UPLC TUV Detector with 500 nL Analytical Flow Cell; Xevo G2 QToF Mass Spectrometer
Wavelength:	214 nm
Scan rate:	10 Hz
Columns:	ACQUITY UPLC BEH130 C ₁₈ , 2.1 x 150 mm, 1.7 μm, Porous, 130Å (p/n 186003556) ACQUITY UPLC CSH130 C ₁₈ , 2.1 x 150 mm, 1.7 μm, Porous, 130Å (p/n 186006938) XSelect CSH130 C ₁₈ XP, 2.1 x 150 mm, 2.5 μm porous, 130Å (p/n 186006943) C ₁₈ , 2.1 x 250 mm, 5 μm, porous, 300Å (competitor product) C ₁₈ , 2.1 x 150 mm, 1.7 μm, superficially porous (1.25 μm core, 0.22 μm shell) 100Å (competitor product)
Column temp.:	40 °C
Sample temp.:	10 °C

Injection volume:	10 μ L
Flow rate:	0.3 mL/min
Mobile phases:	A: 0.1% FA (v/v) in water B: 0.1% FA (v/v) in acetonitrile (ACN) C: 0.1% trifluoroacetic acid (TFA) (v/v) in water D: 0.1% TFA (v/v) in ACN
Vials:	LCGC Certified Clear Glass 12 x 32 mm Screw Neck Qsert Vial (p/n 186001126C)
Gradient:	2% ACN for 1 min, then to 50% ACN for 60 min (Acid composition was controlled by proportioning mobile phases A/B and C/D.)

MS conditions

Mass spectrometer:	Xevo G2 QTof
Ionization mode:	ESI+
Analyzer mode:	Resolution
Capillary voltage:	3.00 kV
Cone voltage:	25 V
Source temp.:	120 °C
Desolvation temp.:	350 °C
Cone gas flow	0.0 L/h

Desolvation gas flow:	800 L/h
Calibration:	NaI 2 µg/µL from 50 to 2000 m/z
Acquisition:	50 to 1990 m/z, 10 Hz scan rate
Data management:	MassLynx Software

Sample Description

MassPREP Peptide Mixture (p/n 186002337), as shown in Table 1, was reconstituted with 0.1% FA in water to a total peptide concentration of ca. 0.6 mg/mL.

	Peptide	Sequence
1	RASG-1	RGDSPASSKP
2	Angiotensin 1-7	DRVYIHP
3	Bradykinin	RPPGFSPFR
4	Angiotensin II	DRVYIHPF
5	Angiotensin I	DRVYIHPFHL
6	Renin Substrate	DRVYIHPFHLLVYS
7	Enolase T35	WLTGPQLADLYHSLMK
8	Enolase T37	YPIVSIEDPFAEDDWEAWSHFFK
9	Melittin	GIGAVLKVLTTGLPALISWIKRKRQQ

Table 1. MassPREP peptide mixture.

Calculations:

Peak capacities for each separation were calculated by measuring peak widths for peptides 2 through 7.

Peptides 8 and 9 co-eluted in several of the separations, precluding them from the calculations. Similarly, peptide 1 (RASG-1) was excluded from the calculation because it eluted from the CSH130 C₁₈ column near the void volume using 0.1% FA in the mobile phase. Peak widths were measured from the UV chromatograms at peak half-height (w_H), averaged, then subsequently converted to 4σ peak capacities according to the following

equation:

$$P_{c,4\sigma} = 1 + \left[\left(\frac{2.35}{4} \right) \left(\frac{t_{gradient}}{w_{h,avg}} \right) \right]$$

Results and Discussion

Peptide Separations

The MassPREP Peptide Mixture contains nine different peptides, varying in amino acid composition, mass, length, and polarity. Peptide sequences are shown in Table 1. Since this mixture is composed of such a diverse set of peptides, it is useful for evaluating mass spectrometric as well as chromatographic performance. To this end, the peptide mixture was employed to benchmark the separation performance of CSH130 C₁₈ against other commonly used stationary phases for peptide analysis. Included in this study were phases with pore sizes large enough in diameter (100 to 300Å) to efficiently separate the peptides in the mixture, which are all less than 3 kDa in mass. In a separate application note, the use of CSH130 C₁₈, with its 130Å pores for separating even larger polypeptides is discussed.¹¹ For the sake of relevance, mass loads for the individual peptides in the mixture were made approximate to conditions common for peptide mapping of antibodies, wherein 20 to 50 µg of Lys-C or tryptic digests are typically analyzed on 2.0 or 2.1 mm I.D. columns.^{2,12-13} Similarly, separations were completed with mobile phases containing a strong ion pairing agent, TFA, a weaker ion pairing agent, FA, or a combination thereof. Performance under these various conditions was of interest, since RP peptide separations are routinely coupled with mass spectrometry. In such applications, formic acid is often preferred over TFA as a mobile phase additive because it permits more sensitive detection.¹⁴⁻¹⁵

Figure 1 shows three chromatograms of the MassPREP Peptide Mixture obtained using a 5 µm silica C₁₈ column under different mobile phase conditions. Separations with TFA provided peaks that were generally symmetrical. Most peaks did not exhibit excessive broadening or tailing. However, peak shape was found to be extremely poor with the FA containing mobile phases. In addition, the largest peptide in the mixture, melittin, was not detected, either because it eluted as too broad a peak or simply failed to elute. Results such as these are typical for HPLC-based peptide separations.

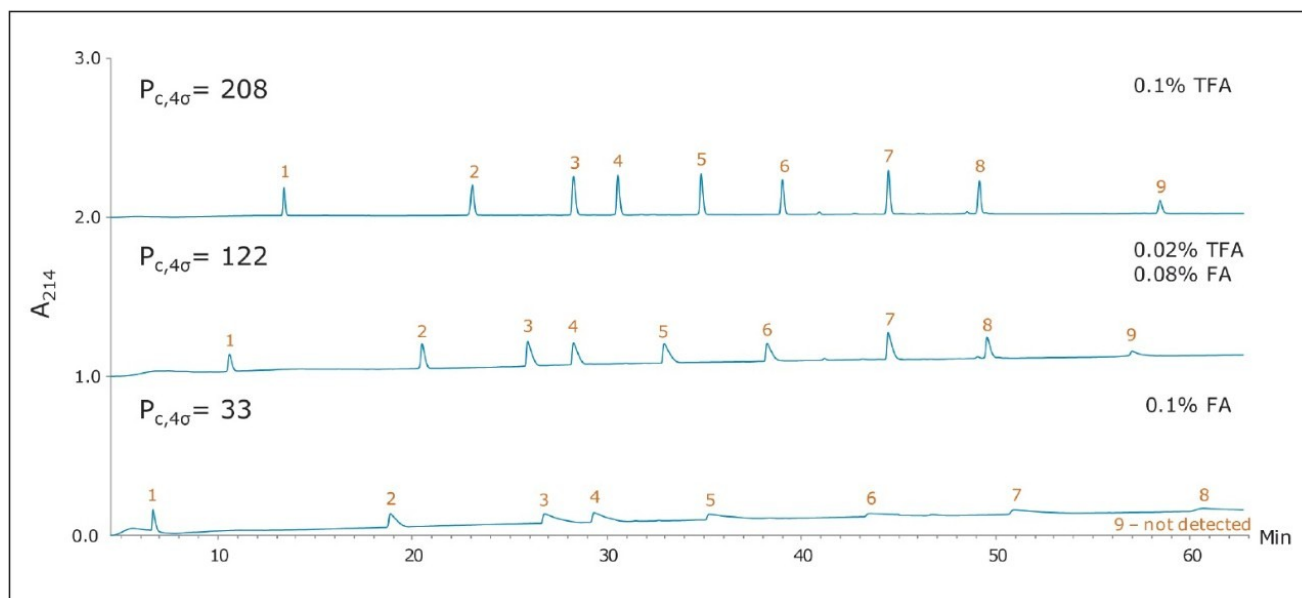


Figure 1. Analysis of MassPREP Peptide Mixture on a porous silica C₁₈ 5 µm column using three different mobile phase conditions. Peptides were identified by MS and are labeled according to Table 1.

The use of sub-2-µm particles provides performance benefits to peptide separations. Chromatograms obtained for two different columns both packed with 1.7 µm particles are displayed in Figures 2 and 3. The chromatograms in Figure 2, in particular, were obtained using a superficially porous C₁₈ column. With TFA in the mobile phase, the peaks were symmetrical and generally narrower than peaks obtained with the 5 µm, porous C₁₈ column, shown in Figure 1. With little or no TFA in the mobile phase, peaks became broader and exhibited significant tailing. The fully porous BEH130 C₁₈ column produced comparable separations to the superficially porous C₁₈ column, shown in Figure 3, in all conditions tested.

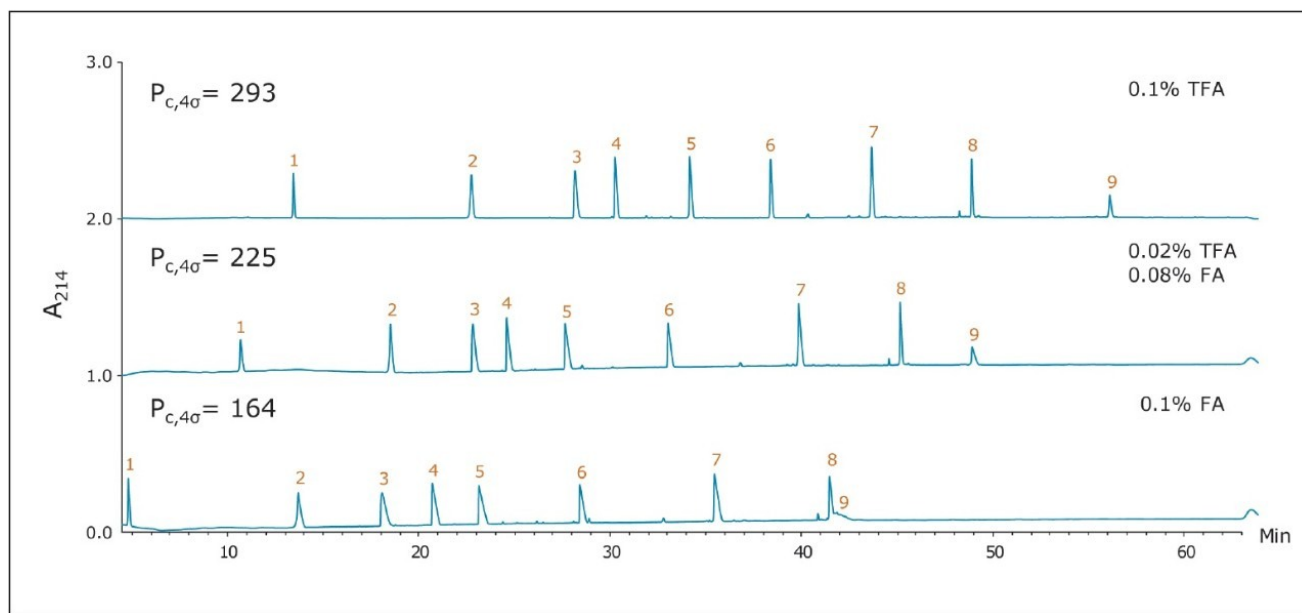


Figure 2. Analysis of MassPREP Peptide Mixture on a superficially porous C₁₈, 1.7 μm column using three different mobile-phase conditions.

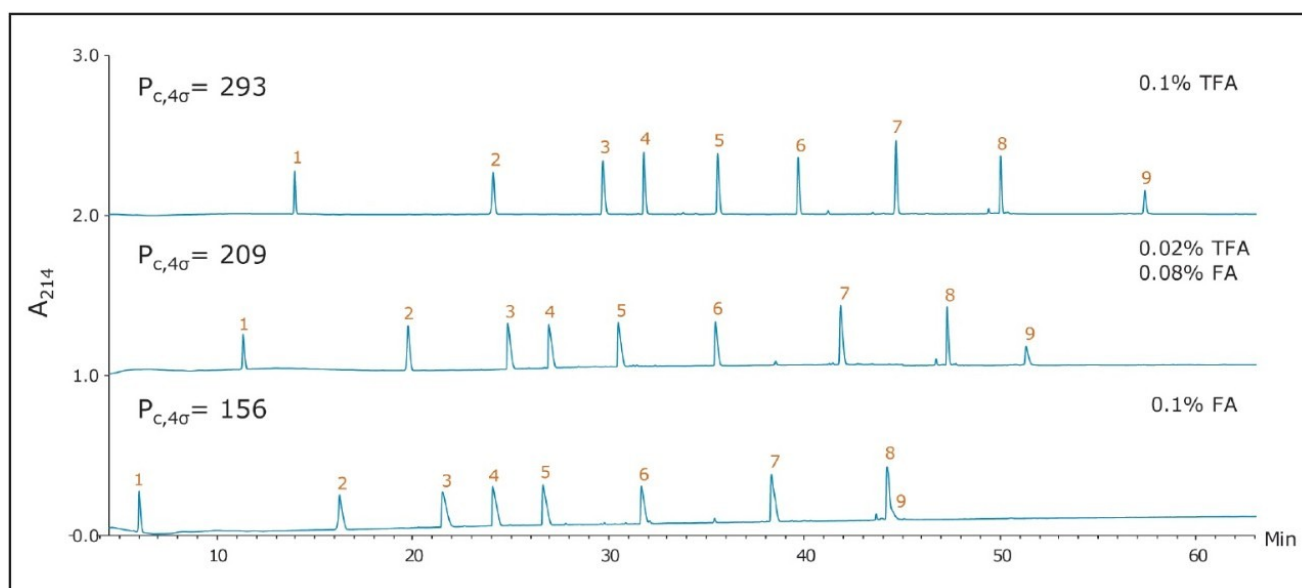


Figure 3. Analysis of MassPREP Peptide Mixture on a Waters ACQUITY UPLC BEH130 C₁₈, 1.7 μm Column using three different mobile-phase conditions.

The separations shown in Figures 1 through 3 served to benchmark the performance of a CSH130 C₁₈, 1.7 μm column for peptide analyses. Chromatograms corresponding to separations with this column are shown in Figure 4. Comparison of Figures 1 through 4 clearly indicates that, unlike the other columns, CSH130 C₁₈ provides the best peak shape with both TFA and FA mobile phases. Additionally, it is evident that CSH130 C₁₈ exhibits unique selectivity, particularly when TFA is excluded from the mobile phase. For instance, with only 0.1% FA in the

mobile phase, peptides 8 and 9 were not well resolved on any column used in this study other than the CSH130 C₁₈, when the two peptides eluted as symmetrical peaks and were separated by more than 3 min. Retention differences were also observed among these columns. Most notably, the CSH130 C₁₈ column was found to be slightly less retentive than each of the other columns included in this study. This is consistent with CSH130 C₁₈ being the only sorbent with a purposely incorporated low level positive surface charge. Coulombic repulsion between the positively charged peptides and the CSH130 C₁₈ surface is likely to be the cause of reduced retention. The insert in Figure 4 displays the earliest portion of the 0.1% FA gradient on CSH130 C₁₈. Under those conditions, the most hydrophilic peptide RASG-1 (peptide 1) eluted near the void marker (Vo). On average, peptides eluted from the CSH130 C₁₈ column with 2% to 4% less ACN when compared to the BEH130 C₁₈ column. Differences in retention were least pronounced with 0.1% TFA and most pronounced with 0.1% FA. When analyzing very polar peptides, initial gradient conditions for the CSH130 C₁₈ may require adjustment accordingly.

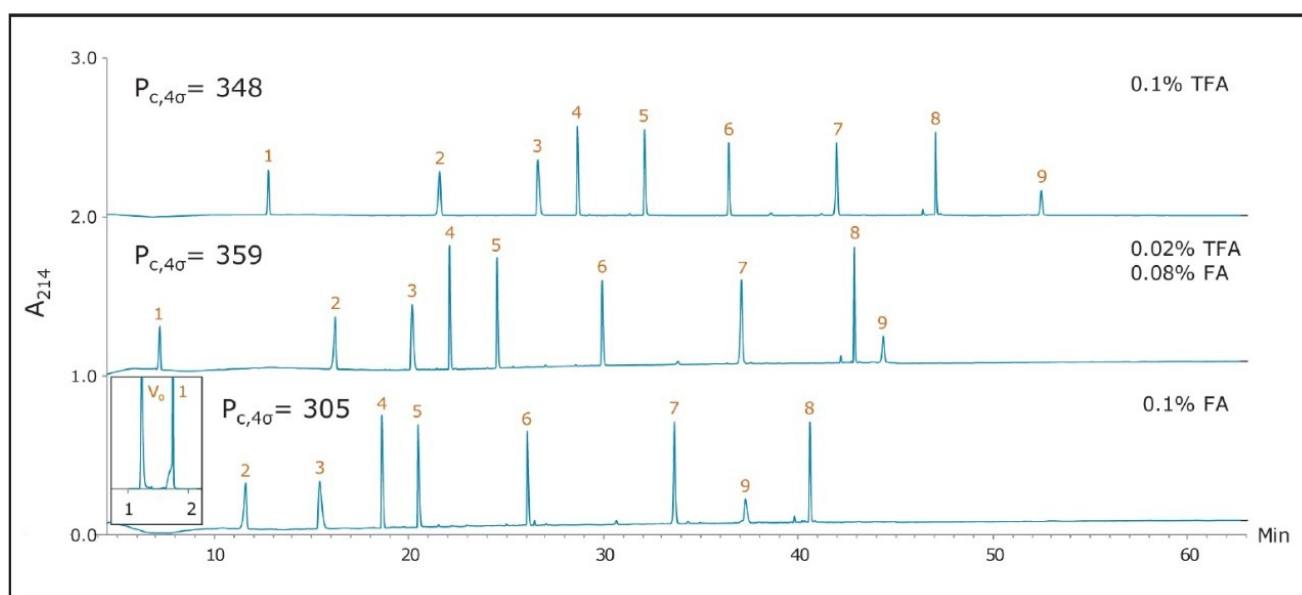


Figure 4. Analysis of MassPREP Peptide Mixture on a Waters ACQUITY UPLC CSH130 C₁₈, 1.7 μm Column using three different mobile-phase conditions.

Peak capacity and MS signal

A qualitative comparison of these separations indicates that the CSH130 C₁₈ column offers a performance advantage over the other columns. However, a quantitative comparison is even more compelling. Peak capacities observed for each separation were calculated as described in the experimental section. Figure 5A shows the relationship between acid modifier composition and the peak capacities obtained with each column. The left side of Figure 5A shows the peak capacity values for separations achieved with only FA and no TFA ion pairing agent.

Moving right along the x-axis presents peak capacity values corresponding to decreasing concentrations of FA and increasing concentrations of TFA.

The performance advantage of the CSH130 C₁₈ column is easily visualized. With 0.1% TFA, the CSH130 C₁₈ column has 20% higher peak capacity than the other 1.7 μ m C₁₈ columns. However, when the mobile phase contains 0.1% formic acid, the CSH130 C₁₈ column provides 90% greater peak capacity compared to the other 1.7 μ m columns. Thus, not only does the CSH130 C₁₈ column exhibit greater peak capacity than the other columns, its performance is far less dependent on TFA. A profound consequence of this is that CSH130 C₁₈ is highly compatible with mass spectrometry. The effect of TFA on the MS detection of the peptides in these analyses is shown in Figure 5B. It is well known that TFA causes significant ion suppression during electrospray ionization.¹⁶⁻¹⁷ Here, the use of TFA instead of FA caused a 12-fold decrease in MS signal. CSH130 C₁₈ does not require much, if any, TFA for optimal peak capacity, making it ideal for LC-MS applications when high sensitivity is desired.

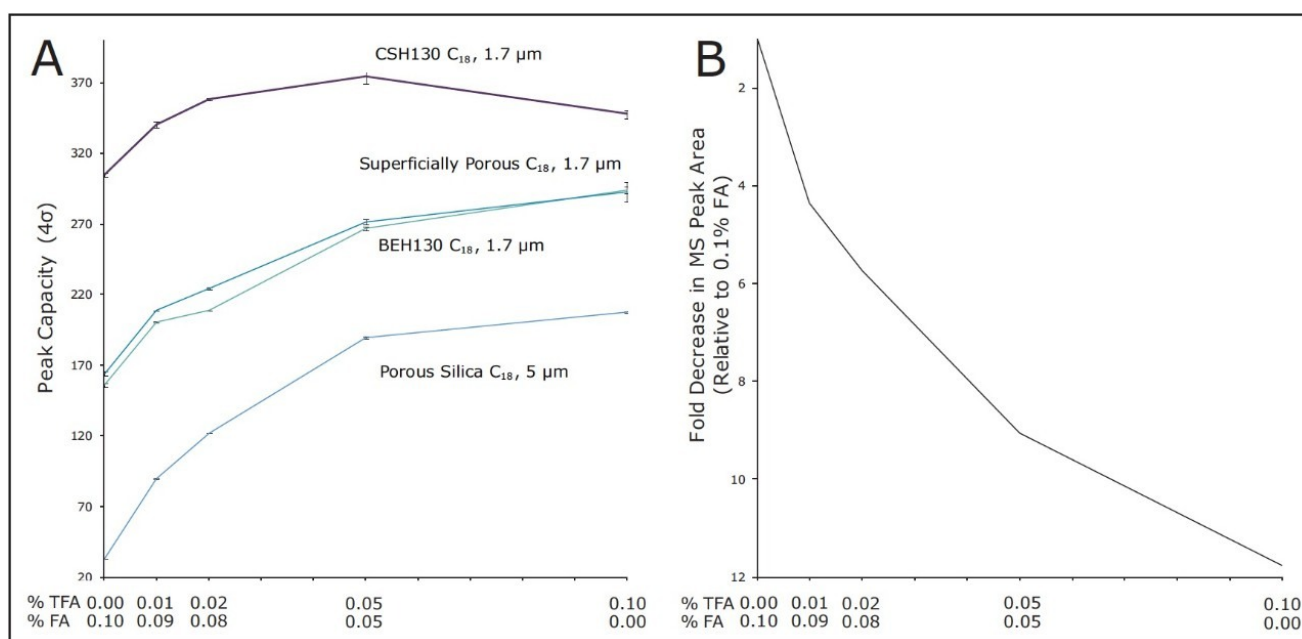


Figure 5. Effect of TFA on peak capacity and MS signal. (A) Peak capacity as a function of acid modifier. Values were derived from two replicates. (B) Decrease in MS peak area as a function of acid modifier

Particle size and UPLC/HPLC scalability

Many peptide separations are still performed on traditional HPLC instruments. Due to their prohibitively high back pressures, columns packed with sub-2- μ m particles are generally not well suited for use with HPLC systems. Conversely, columns packed with 2.5 μ m particles can be used on any LC instrument due to their lower back pressure. To determine if the high peak capacity peptide separations obtained using a CSH130 C₁₈, 1.7 μ m

column could be successfully transferred to a CSH130 C₁₈ *XP*, 2.5 μ m column, an HPLC compatible method for a 2.5 μ m *XP* column was programmed from the method for a 1.7 μ m column. This was done by decreasing flow rate and increasing the gradient time by a factor of 1.5, as suggested by the ACQUITY UPLC Column Calculator.¹⁸ Figure 6 shows that separations with the 1.7 μ m column were successfully transferred to the 2.5 μ m *XP* column. The consistency of the selectivity factors underscores this observation, as shown in Table 2. Separations with the 2.5 μ m *XP* particle column resulted in considerably lower back pressures compared to the 1.7 μ m particle column (~3000 versus ~8000 psi), thereby demonstrating that CSH technology can be readily employed for high peak capacity peptide separations using either UPLC or HPLC instrumentation.

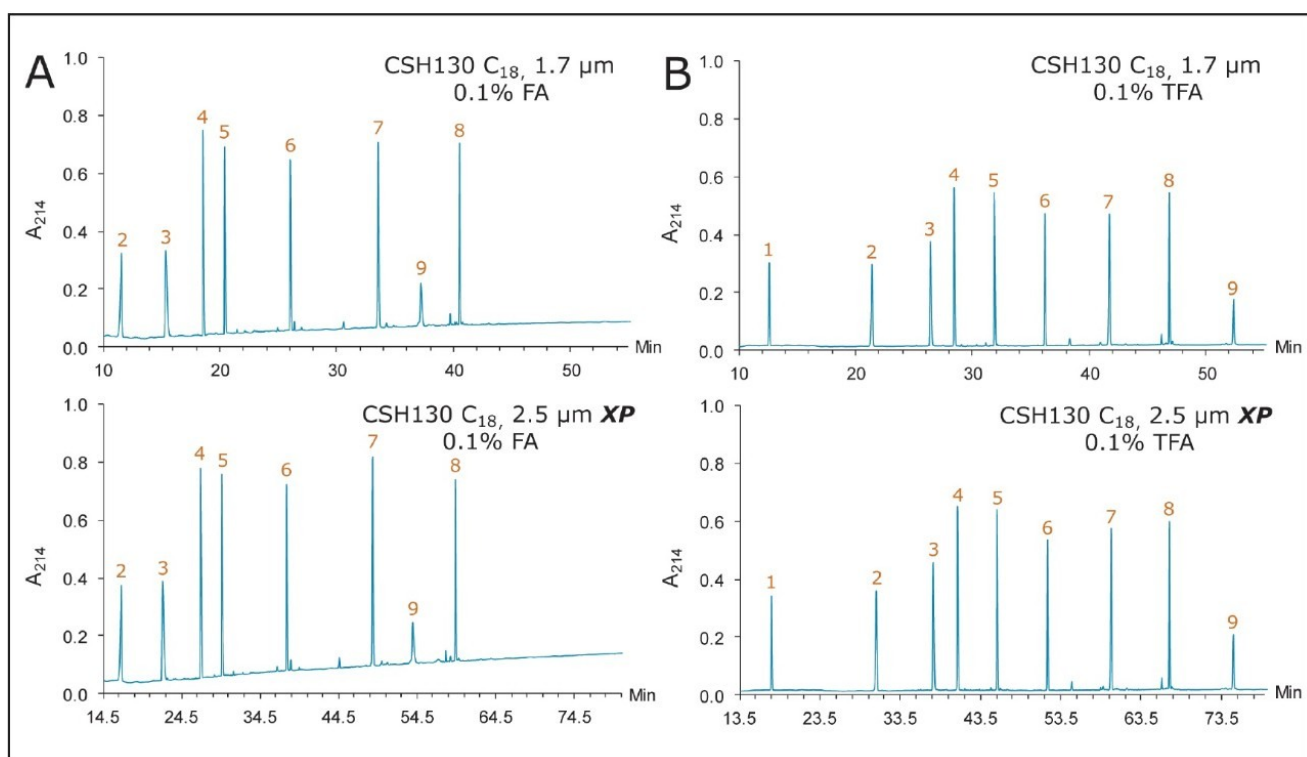


Figure 6. UPLC/HPLC (1.7/2.5 μ m particle size) scalability of CSH130 C₁₈ column. Chromatograms obtained with (A) 0.1% FA, and (B) 0.1% TFA mobile phases. The method for the Waters XSelect CSH130 C₁₈ , 2.5 μ m *XP* column was programmed from the method for the Waters ACQUITY CSH130 C₁₈ , 1.7 μ m column using the ACQUITY UPLC Column Calculator.

	0.1% FA			0.1% TFA	
	CSH130 C ₁₈ 1.7 μ m	CSH130 C ₁₈ 2.5 μ m <i>XP</i>		CSH130 C ₁₈ 1.7 μ m	CSH130 C ₁₈ 2.5 μ m <i>XP</i>
$\alpha_{2,3}$	1.36	1.35	$\alpha_{1,2}$	1.76	1.83
$\alpha_{3,4}$	1.22	1.24	$\alpha_{2,3}$	1.25	1.25
$\alpha_{4,5}$	1.11	1.11	$\alpha_{3,4}$	1.08	1.08
$\alpha_{5,6}$	1.29	1.30	$\alpha_{4,5}$	1.13	1.13
$\alpha_{6,7}$	1.30	1.30	$\alpha_{5,6}$	1.14	1.14
$\alpha_{7,9}$	1.11	1.11	$\alpha_{6,7}$	1.16	1.16
$\alpha_{9,8}$	1.09	1.10	$\alpha_{7,8}$	1.12	1.12
			$\alpha_{8,9}$	1.12	1.12

Table 2. Selectivity factors for the separations shown in Figure 6.

Conclusion

The CSH130 C₁₈ column, with its novel incorporation of a low level positive charge, has proven to be an enabling technology for peptide separations. Based on analyses of a nine-peptide mixture, it was found that CSH130 C₁₈ columns exhibit greater peak capacity as well as unique selectivity when compared to columns containing C₁₈ stationary phases without a purposely incorporated positive surface charge. The performance of CSH130 C₁₈ columns was also observed to be significantly less dependent on strong ion pairing agents, such as TFA, which suppress electrospray ionization. Furthermore, separations achieved with a CSH130 C₁₈, 1.7 μ m column were transferrable to a CSH130 C₁₈, 2.5 μ m *XP* column under lower pressure HPLC conditions, albeit at the cost of analysis time. The availability of different particle size CSH130 C₁₈ columns should facilitate the adaptation of UPLC separations for routine use in laboratories restricted to HPLC instrumentation as well as expand the capabilities of UHPLC instrumentation with 9000 to 12,000 psi pressure limits.

References

1. Yates JR, Ruse CI, Nakorchevsky A. Proteomics by mass spectrometry: approaches, advances, and applications. *Annu Rev Biomed Eng.* 2009; 11: 49-79.
2. Richardson J, Shah B, Xiao G, Bondarenko PV, Zhang Z. Automated in-solution protein digestion using a commonly available high-performance liquid chromatography autosampler. *Anal Biochem.* 2011; 411(2): 284-91.

3. Neue UD. Theory of peak capacity in gradient elution. *J Chromatogr A*. 2005; 1079(1-2): 153-61.
4. Wyndham KD, O’Gara JE, Walter TH, Glose KH, Lawrence NL, Alden BA, Izzo GS, Hudalla CJ, Iraneta PC. Characterization and evaluation of C₁₈ HPLC stationary phases based on ethyl-bridged hybrid organic/inorganic particles. *Anal Chem*. 2003; 75(24): 6781-8.
5. Iraneta PC, Wyndham KD, McCabe DR, Walter TH. Charged Surface Hybrid (CSH) Technology and Its Use in Liquid Chromatography. Waters White Paper 720003929EN. 2011.
6. Berthelette KD, Summers M, Fountain KJ. Modernization of the USP Assay for Clarithromycin Using eXtended Performance (XP) Column Technology. Waters Application Note 720004461EN. 2012.
7. Fountain KJ, Hewitson HB, Iraneta PC, Morrison D. Practical Applications of Charged Surface Hybrid (CSH) Technology. Waters Application Note 720003720EN. 2010.
8. Summers M, Fountain KJ. A Quality by Design (QbD) Based Method Development for the Determination of Impurities in a Peroxide Degraded Sample of Ziprasidone. Waters Application Note 720004072EN. 2011.
9. Summers M, Fountain KJ. Rapid Method Development through Proper Column Selection. Waters Application Note 720004353EN. 2012.
10. ACQUITY UPLC CSH Columns. Waters Applications Notebook 720003537EN. 2010.
11. Lauber MA, Koza SM, Fountain KJ. Peptide Mapping and Small Protein Separations with Charged Surface Hybrid (CSH) C₁₈ and TFA-Free Mobile Phases. Waters Application Note. 720004571EN. 2013.
12. Yan B, Yates Z, Balland A, Kleemann GR. Human IgG1 hinge fragmentation as the result of H₂O₂-mediated radical cleavage. *J Biol Chem*. 2009; 284(51): 35390-402.
13. Yu XC, Joe K, Zhang Y, Adriano A, Wang Y, Gazzano-Santoro H, Keck RG, Deperalta G, Ling V. Accurate determination of succinimide degradation products using high fidelity trypsin digestion peptide map analysis. *Anal Chem*. 2011; 83(15):5912-9.
14. Annesley TM. Ion suppression in mass spectrometry. *Clin Chem*. 2003; 49(7): 1041-4.
15. Temesi D, Law B. LC-GC Int. 1999;17: 626-32.
16. Apffel A, Fischer S, Goldberg G, Goodley PC, Kuhlmann FE. Enhanced sensitivity for peptide mapping with electrospray liquid chromatography-mass spectrometry in the presence of signal suppression due to trifluoroacetic acid-containing mobile phases. *J Chromatogr A*. 1995;712(1): 177-90.

17. Kuhlmann FE, Apffel A, Fischer S, Goldberg G, Goodley PC. *J Am Soc Mass Spectrom*. 1995; 6 (12): 1221-1225.
18. Jones M D, Alden P, Fountain KJ, Aubin A. Waters Application Note 720003721EN. 2010.

Featured Products

- [ACQUITY UPLC H-Class PLUS Bio System <https://www.waters.com/10166246>](https://www.waters.com/10166246)
- [ACQUITY UPLC Tunable UV Detector <https://www.waters.com/514228>](https://www.waters.com/514228)
- [MassLynx MS Software <https://www.waters.com/513662>](https://www.waters.com/513662)

720004568, January 2013



©2019 Waters Corporation. All Rights Reserved.