

Electron Transfer Dissociation of *N*-linked Glycopeptides from a Recombinant mAb Using SYNAPT G2-S HDMS

Jonathan P. Williams, Jeffery M. Brown, Stephane Houel, Ying Qing Yu, Weibin Chen

Waters Corporation

Abstract

This application note demonstrates ETD-based MS technologies used for structural *N*- and *O*-glycan analysis, describing the modification site determination, and sequence information that can be readily obtained. A recombinant mAb, trastuzumab, is used as a test case for this study.

Benefits

- Improves the overall glycopeptide fragmentation efficiency
- SYNAPT G2-S HDMS System equipped with an ETD source proves to be an indispensable tool for protein glycosylation analysis.

Introduction

Protein glycosylation is a major requirement in the production of recombinant therapeutic antibodies and plays a vital role in its efficacy and safety. Typical glycosylation analysis consists of a released glycan assay,

glycosylation site determination, and site heterogeneity analysis.

Throughout the years, biopharmaceutical laboratories have developed and optimized the glycan profiling analysis using a variety of liquid chromatographic separation modes with optical detectors. Tandem mass spectrometry based approaches represent a rapid and sensitive approach to obtain site-specific characterization of glycosylation. Electron transfer dissociation (ETD) is a powerful fragmentation technique known to be particularly useful for determining modification sites of labile post-translational modifications (PTMs), which are often more difficult to characterize using collision induced dissociation (CID). This application note offers details of glycopeptide characterization using ETD fragmentation.

Selected precursor ion charge-state is important in ETD, since this affects the dissociation efficiency.¹ Non-dissociative electron transfer is often observed as a function of decreasing precursor ion charge; therefore, *m*-nitrobenzyl alcohol (*m*-NBA) was added post-column to increase the charge-state of the ESI-generated ions to enhance ETD efficacy.²

We demonstrate ETD-based MS technologies used for structural *N*- and *O*-glycan analysis, describing the modification site determination, and sequence information that can be readily obtained. A recombinant mAb, trastuzumab, is used as a test case for this study.

Experimental

Mass Spectrometry conditions

Mass Spectrometer:	SYNAPT G2-S HDMS
Capillary:	2.0 kV
Reagent glow discharge current:	70 μ A
Source temp.:	100 °C
Sampling cone:	25 V
Extraction cone:	3 V

Reagent make-up gas flow:	25 mL/min
Desolvation temp.:	200 °C
Cone gas flow:	30.0 L/h
ETD reagent:	1,3-dicyanobenzene (<i>m/z</i> 128)
Trap wave height:	0.25 V
Trap RF:	500 V

Sample description

3-Nitrobenzyl alcohol (*m*-NBA), was purchased from Fluka (Part number 73148), and the ETD reagent, 1,3-Dicyanobenzene, was purchased from Sigma-Aldrich (Part number 145858). Trastuzumab was reduced and alkylated using dithiothreitol and iodoacetamide, followed by overnight trypsin digestion.

UPLC conditions

An ACQUITY UPLC H-Class Bio System was directly coupled to the standard ESI interface of a SYNAPT G2-S HDMS Mass Spectrometer equipped with ETD. Reversed phase chromatographic separation of 1 to 10 pmol of tryptic peptides was performed on an ACQUITY UPLC BEH300 C₁₈, 2.1 x 150 mm, 1.7- μ m Column. Mobile phases A and B were water and acetonitrile, both containing 0.1% formic acid. The tryptic peptides were eluted from the column using a gradient from 5% to 35% B over 35 min at a flow rate of 100 μ L/min. The gradient was further ramped to 50% B for 10 min, then to 80% B for 1 min, and held for 5 min at a flow rate of 200 μ L/min. Post-column addition of ~0.4% *m*-NBA, a ‘super-charging’ reagent, was achieved using a Valco T-piece.

Results and Discussion

ETD has been used as a complementary tool to CID for protein post-translational modification analysis. CID fragmentation of glycopeptides is known to favor neutral losses (cleavage of regions within the attached sugar); consequently, intense oxonium ions are detected at the low *m/z*. Since CID is usually dominated by glycan-related product ions, this hampers peptide sequence information for precise site-specific identification

of this important class of PTM.

Fortunately, ETD fragmentation follows a different fragmentation mechanism where the glycan moieties are preserved on the c and z fragment ions. Since fragmentation is conducted post separation, these fragment ions are generated at the same retention time as those in the glycan moiety CID analysis.

Tryptic recombinant monoclonal IgG, trastuzumab, was used for the ETD analysis. Trastuzumab is known to have one N-linked glycosylation site on the heavy chain in the F_c region. Glycopeptide chromatographic retention times were determined from a UPLC-MS^E experiment. Since the common oxonium ions, e.g., m/z 204.09, 366.14, from the high energy fragmentation data channel are the dominant fragments, as shown in Figure 1, the m/z extracted ion chromatograms allow identification of the retention times of the glycopeptides and obtain their m/z values. The retention times and precursor m/z values were used to set up the subsequent ETD experiment.

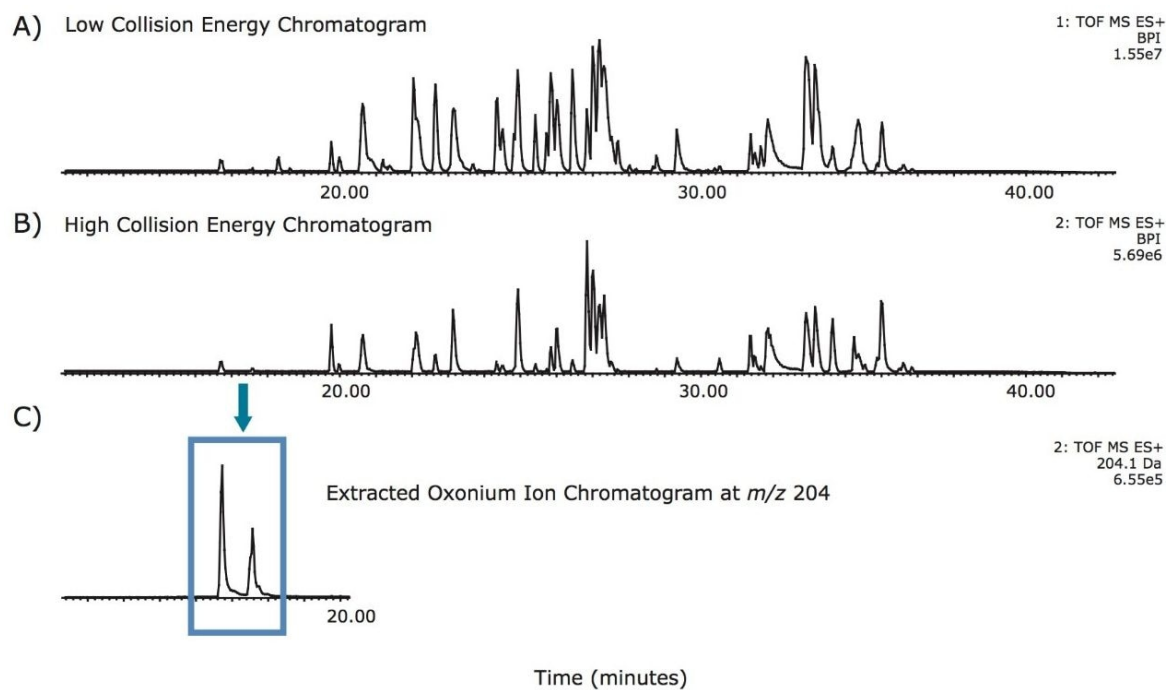


Figure 1. UPLC-MS^E base peak intensity chromatograms. A) The low collision energy data channel; B) The high collision energy data channel; C) The extracted ion chromatogram at m/z 204 (oxonium ion) shows that the glycopeptides are the early eluting peaks.

By post column mixing the super-charge reagent, *m*-NBA, the overall charge envelopes of the targeted glycopeptides are shifted to favor higher charges, as shown in Figure 2. Non-dissociative electron transfer is

often observed as a function of decreasing precursor ion charge. Figure 3A shows the fragmentation of the triply charged precursor ion (peptide contains G0F) which generates charge-reduced to 2⁺ and 1⁺ ions, with little peptide backbone fragmentation. Figure 3B demonstrates that intense c and z ions were produced when *m*-NBA was used to promote the quadruply charged precursor ion for ETD. The net mass difference between the c₄ to c₅ (and z₄ to z₅) ions matches the mass of Asn plus G0F (total mass difference of 1558.6 Da).

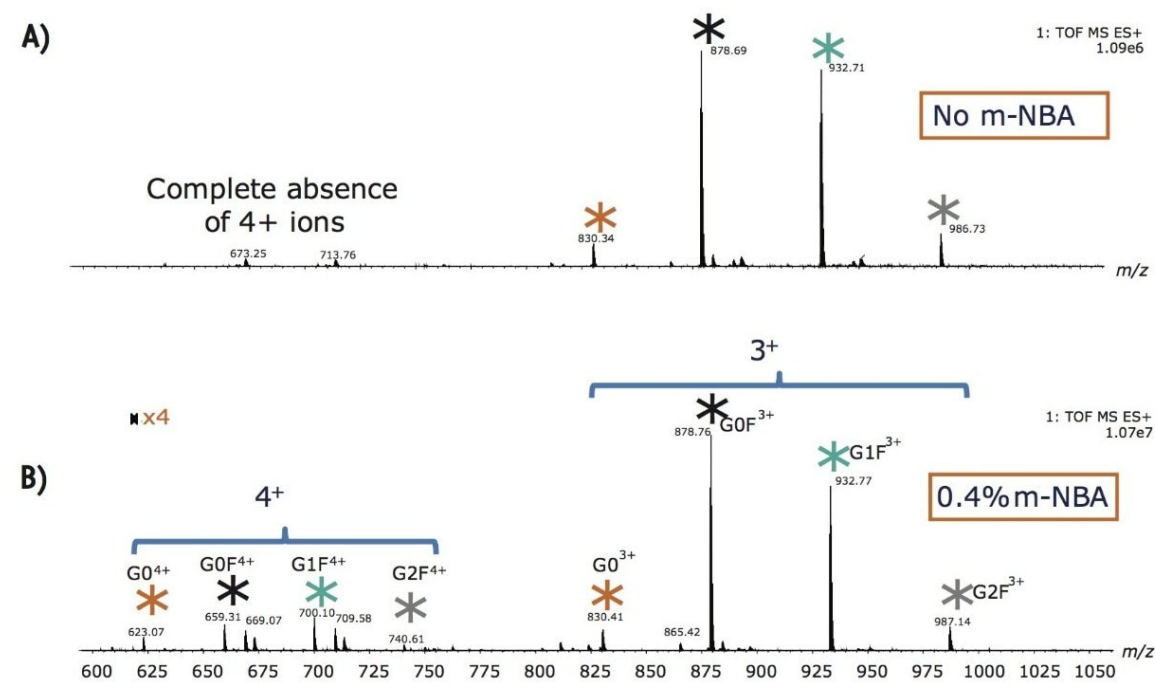


Figure 2. Summed MS spectra for glycopeptides eluting between 15 to 18 minutes. A) No 4⁺ charge peaks are observed when the super base is not added. B) Supercharge reagent *m*-NBA shifts the charge states of the glycopeptides to 4⁺ (see the zoomed in region).

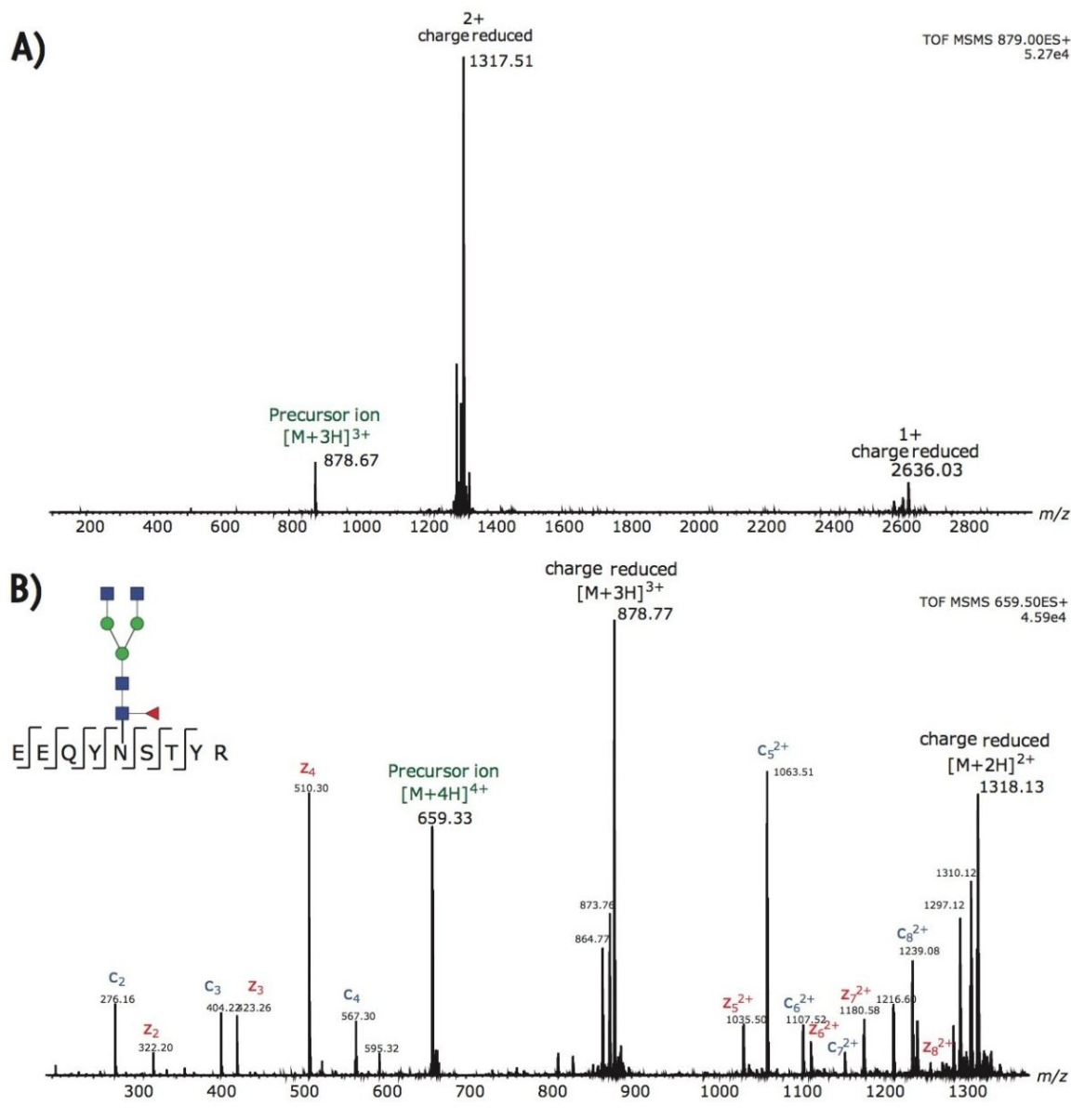


Figure 3. A) No *m*-NBA added, ETD of 3^+ ion of G0F containing peptide at m/z 878.7 shows No sequence-specific ions. Supercharging is a good possibility since ions with higher charges may be better suited to ETD. B) With *m*-NBA, ETD of 4^+ ion is possible, and intense *c/z* ions are observed.

In addition to G0F, the other two dominant glycoforms from trastuzumab are G1F and G2F. Figures 4A-B illustrate the ETD fragmentation of the quadruply charged precursor ions from these glycopeptides. The *c* and *z* ions in these spectra are used to confirm the peptide backbone with high confidence. In addition, we observed little to no neutral loss from the glycan moiety; hence, the intact glycan mass can be assigned to the

glycosylation site with single amino acid resolution.

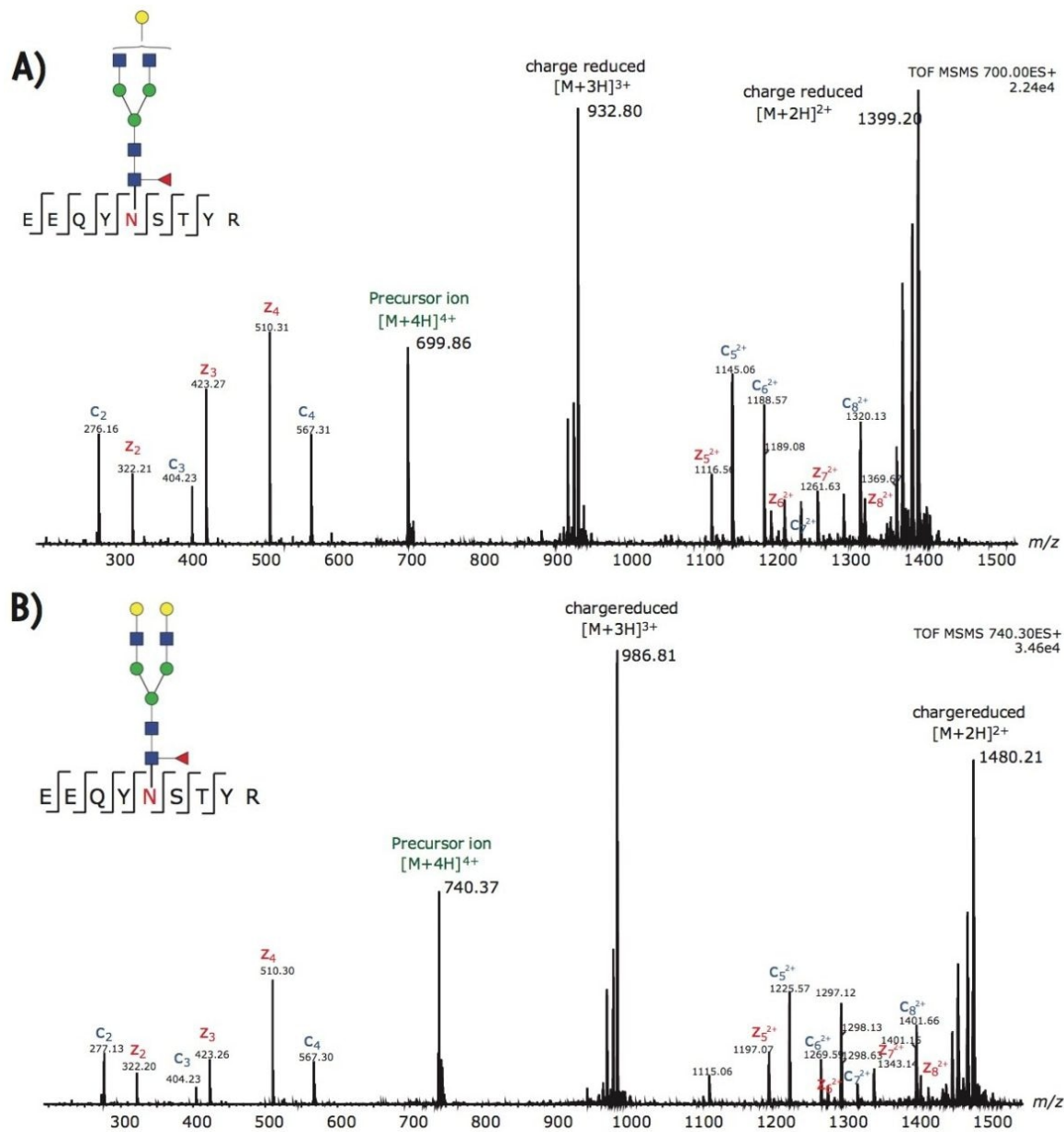


Figure 4. Two additional ETD spectra from 4^+ precursors of G1F (A) and G2F (B) containing glycopeptides. Super base *m*-NBA is critical for generating peptide backbone fragmentations.

Conclusion

ETD proved to be an indispensable tool for characterizing post translational modifications of biotherapeutic proteins. The data from this application demonstrate that glycopeptide site heterogeneity from a monoclonal antibody, trastuzumab, can be achieved using ETD on a SYNAPT G2-S HDMS System with post-column mixing of *m*-NBA.

- Both *de novo* sequence information, glycan linkage site, and the glycan mass can be confidently assigned from the fragmentation data.
- The combined UPLC-MS^E method, using both CID and ETD, is a powerful tool for protein biotherapeutic characterization.
- In addition, this ETD method can be performed using analytical scale chromatographic setup and analytical scale MS ion source, hence, minimizing the amount of time spent on method optimization.

References

1. *Anal. Chem.* 2007; 79: 477-485.
2. *Anal. Chem.* 2007; 79: 9243-9252.

Featured Products

ACQUITY UPLC H-Class PLUS Bio System <<https://www.waters.com/10166246>>

Electron Transfer Dissociation (ETD) MS <<https://www.waters.com/134751078>>

720004481, October 2012

©2019 Waters Corporation. All Rights Reserved.

[Terms of Use](#)
— [環境設定](#)

[Privacy](#)

[Trademarks](#)

[Sitemap](#)

[Careers](#)

[クッキー](#)

[クッキ](#)