

Note d'application

## The Use of Multivariate Analysis for Early Detection of Potential Food or Beverage Adulterations

---

Gareth E. Cleland, Jennifer A. Burgess

Waters Corporation



---

## Abstract

This application note shows how a generic approach to sample preparation, data collection, and data processing can allow analysts to successfully locate and identify unknown adulterations in the food and beverage industries. A chemist's time is expensive; however, extensive data review by a supervisor or senior manager is even more so. This approach also highlights the cost savings that can be achieved by minimizing the experimental setup and data analysis times.

### Benefits

The early identification of food or beverage adulteration can prevent costly product recalls and protect a particular brand. Constantly monitoring production or incoming raw materials by using statistical analysis of LC-MS data can rapidly identify potential adulterations. As a result,

- Harm to humans, animals, or the environment can be prevented.
- Brand protection is maintained.
- Costly product recalls can be avoided.

---

## Introduction

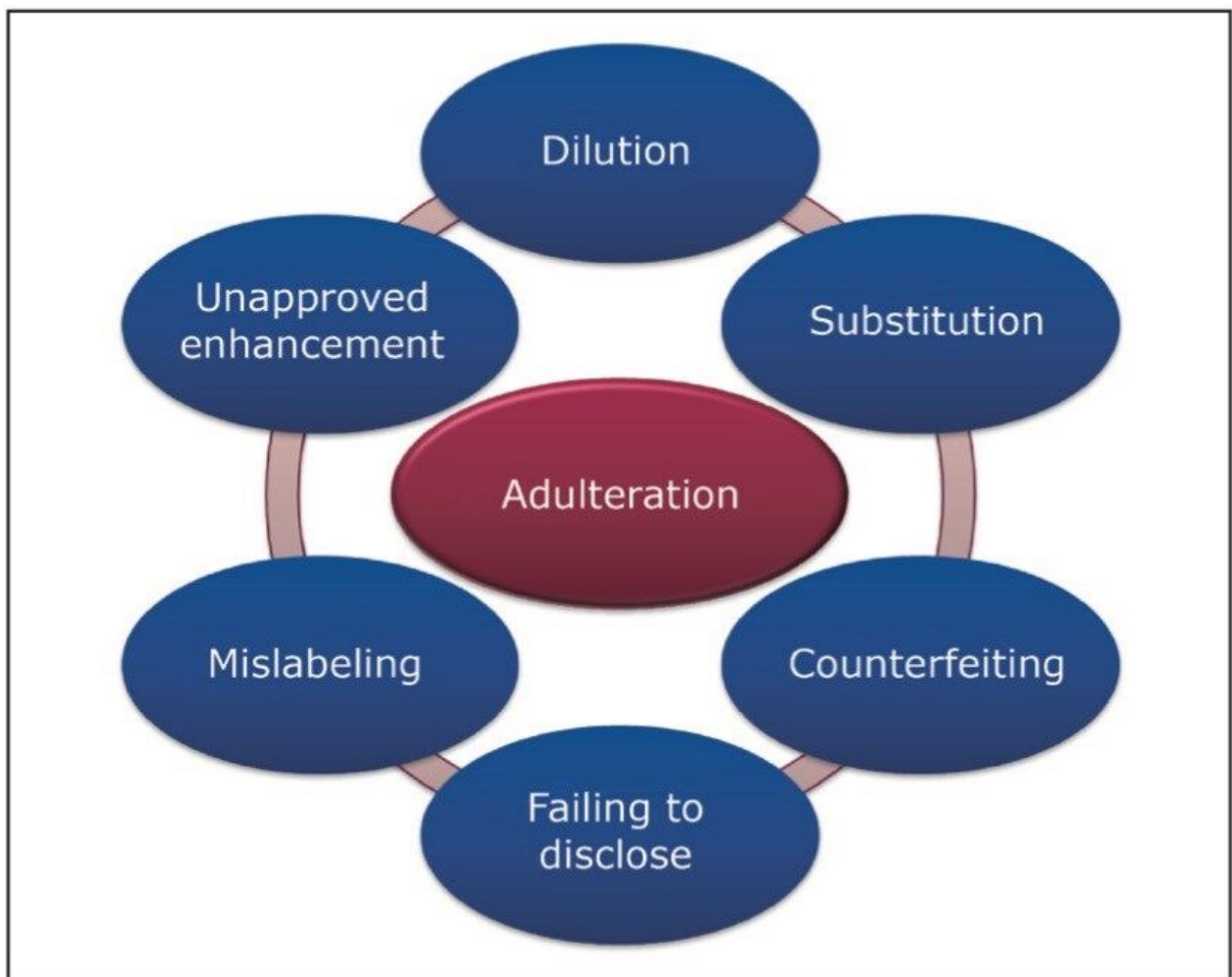
The definition of adulteration is "To make impure by adding extraneous, improper, or inferior ingredients".<sup>1</sup> In many countries around the world, "adulteration" is a legal term meaning that a food product fails to meet federal, state, or national standards.

Since ancient times, producers have been willing to alter their wares in order to get the best prices for cheaper goods. Until the nineteenth century, there were very few controls in place to ensure the quality of food and beverages sold to the public. Today, food and beverage products sold publicly must by law state their contents on the packaging. However, recent examples of adulteration can still be found:

- 2008 In China, milk, infant formula, and other foodstuffs were adulterated with melamine in order to give the appearance of a higher protein content. This caused six infant deaths, almost 900 hospitalizations,<sup>2,3</sup> and an estimated total of 300,000 victims.<sup>4</sup>
- 2004 In China, watered-down milk led to an estimated 13 infant deaths from malnutrition.<sup>5</sup>

- 1997 A U.S. food packaging company pled guilty to spraying grain with water to increase its weight and therefore its value.<sup>6</sup>
- 1987 A baby food company in the U.S. paid fines of more than \$2M after being found guilty of illegally selling artificially flavored sugar water as apple juice.<sup>7</sup>

Figure 1 highlights several actions that can be considered adulteration within the food and beverage industries. Knowingly or unknowingly, adulterations are still taking place today.



*Figure 1. Many actions can be classified as forms of adulteration.*

In today's food and beverage industry, many successful companies are using flavors, fragrances, and ingredients sourced from all over the world. To protect a brand, food and beverage companies must ensure that their raw materials and final products are free from adulteration. Failure to do so can result in harm to human health. An adulteration can also be financially devastating to a food company if the result is a costly

product recall or even more worrisome, a loss of consumer confidence in its 'brand'.

Various techniques are used in a quality control environment to detect known contaminants or adulterants. But how can we detect something we do not know we are looking for? How do we prevent the next food or beverage adulteration scandal?

This application note shows how a generic approach to sample preparation, data collection, and data processing can allow analysts to successfully locate and identify unknown adulterations in the food and beverage industries. A chemist's time is expensive; however, extensive data review by a supervisor or senior manager is even more so. This approach also highlights the cost savings that can be achieved by minimizing the experimental setup and data analysis times when trying to answer the complex questions, "Is something there that shouldn't be, and if so, what is it?"

---

## Experimental

### UPLC conditions

UPLC system:	ACQUITY UPLC with Column Manager
Column 1:	ACQUITY UPLC HSS T3 Column, 1.8 $\mu$ m, 2.1 x 100 mm
Runtime:	10.0 min
Mobile phase A1:	Water with 0.1% formic acid
Mobile phase B1:	Acetonitrile with 0.1% formic acid
Flow rate:	0.5 mL/min
Injection volume:	2 $\mu$ L

SL. No.	Time(min)	Flow rate(mL/min)	%A	%B
1	Initial	0.5	99	1
2	0.20	0.5	99	1
3	5.00	0.5	1	99
4	5.10	0.5	99	1
5	10.00	0.5	99	1

Column 2: ACQUITY UPLC BEH Amide 1.7  $\mu$ m, 2.1 x 150 mm

Runtime: 15 min

Mobile phase A2: 50/50 Acetonitrile/ water with 10 mM ammonium formate and 0.125% formic acid

Mobile phase B2: 90/10 Acetonitrile/ water with 10 mM ammonium formate and 0.125% formic acid

Flow rate: 0.6 mL/min

Injection volume: 10  $\mu$ L

Weak needle wash: 95/5 Acetonitrile/water

Strong needle wash: 95/5 Acetonitrile/water

Sample loop: 20  $\mu$ L

Injection type: PLUNO

SL. No.	Time(min)	Flow rate(mL/min)	%A	%B
1	Initial	0.6	2	98
2	0.20	0.6	2	98
3	5.00	0.6	98	2
5	5.10	0.6	2	98
6	15.00	0.6	2	98

## MS conditions

MS system: Xevo G2 QTof

Resolution: ESI positive

Capillary voltage: 2.8 kV

Resolution: ESI negative

Capillary voltage: 2.5 kV

## Common MS<sup>E</sup> conditions

Extraction cone: 4 V

Cone voltage: 25 V

Source temp.: 120 °C

Desolvation temp.: 450 °C

## Common MS<sup>E</sup> conditions

Desolvation gas:	950 L/h
Cone gas:	45 L/h
Mass range:	100 to 1200 Da
Low energy:	6 eV
High energy ramp:	10 to 45 eV
Scan rate:	0.2 sec
Data collection:	MS <sup>E</sup> centroid with lock mass applied

## LockSpray conditions

Compound:	2 ng/μL Leucine enkephalin
Positive mode:	556.2771 <i>m/z</i>
Negative mode:	554.2615 <i>m/z</i>
Flow rate:	20 μL/min
Capillary voltage:	2.8 kV
Collision energy:	6 eV
Cone voltage:	25 V
Frequency:	20 sec

## Sample preparation

Milk samples were blind spiked with melamine, cyanuric acid, and a five compound mixture of human and veterinary drugs in order to mimic different adulterations. Standard spiking solutions of melamine, cyanuric acid, and the five compound mixture were prepared at a concentration of 200 µg/g in 50:50 ACN:H<sub>2</sub>O. Table 1 shows the formulas and masses of melamine, cyanuric acid, and the five compound mix.

Component	Empirical Formula	Exact Mass ([M+H] <sup>+</sup> )	Exact Mass ([M-H] <sup>-</sup> )
Acetaminophen	C <sub>8</sub> H <sub>9</sub> NO <sub>2</sub>	152.0712	150.0555
Caffeine	C <sub>8</sub> H <sub>10</sub> N <sub>4</sub> O <sub>2</sub>	195.0882	193.0726
Sulfadimethoxine	C <sub>12</sub> H <sub>14</sub> N <sub>4</sub> O <sub>4</sub> S	311.0814	309.0658
Terfenadine	C <sub>32</sub> H <sub>41</sub> NO <sub>2</sub>	472.3216	470.3059
Reserpine	C <sub>33</sub> H <sub>40</sub> N <sub>2</sub> O <sub>9</sub>	609.2812	607.2656
Melamine	C <sub>3</sub> H <sub>6</sub> N <sub>6</sub>	127.0732	125.0576
Cyanuric acid	C <sub>3</sub> H <sub>3</sub> N <sub>3</sub> O <sub>3</sub>	130.0253	128.0096

Table 1. Compounds used to blind spike milk samples.

Over a five day period, cartons of milk from the same manufacturer were purchased at a local store. A 5-mL aliquot was removed and stored at -60 °C. On day six, all of the samples were thawed. In a 20-mL scintillation vial, 1.0 g of each milk sample was weighed out. To mimic an adulteration, a person independent to the analysis spiked each sample with 52.5 µL water, or one of the 200 µg/g standards containing the melamine, cyanuric acid, or five compound mix. This provided blind spiked samples at 10 ppm, a level considered reasonable for an adulteration made for economic gain.

The samples were returned to the chemist performing the analysis and the following sample preparation protocol was followed:

To the 1.0 g of potentially spiked product:

- 1 mL of formic acid in water was added (10% v/v).
- Sample was vortexed for 15 seconds to dissolve all solids
- 1 mL of the prepared sample was added to a second 20-mL scintillation vial containing 9 mL of 97/3 acetonitrile/water with 10 mM ammonium acetate.



- Sample was mixed well before filtering through a 0.2  $\mu\text{m}$  PTFE syringe filter into a 1.5-mL Waters Maximum Recovery Vial.

---

## Results and Discussion

The investigative workflow suggested for this type of analysis is shown in Figure 2. For this series of experiments, we aimed to maximize the identification of an unknown adulterant by using UPLC-MS. Following a generic sample preparation, data were collected in ESI+ and ESI- modes using both HILIC and reversed-phase chromatography. The ACQUITY UPLC BEH Amide Column has the ability to retain very polar compounds, while the HSS T3 Column can retain a wide variety of less polar compounds. Seven replicates of each milk sample provided good statistical data.

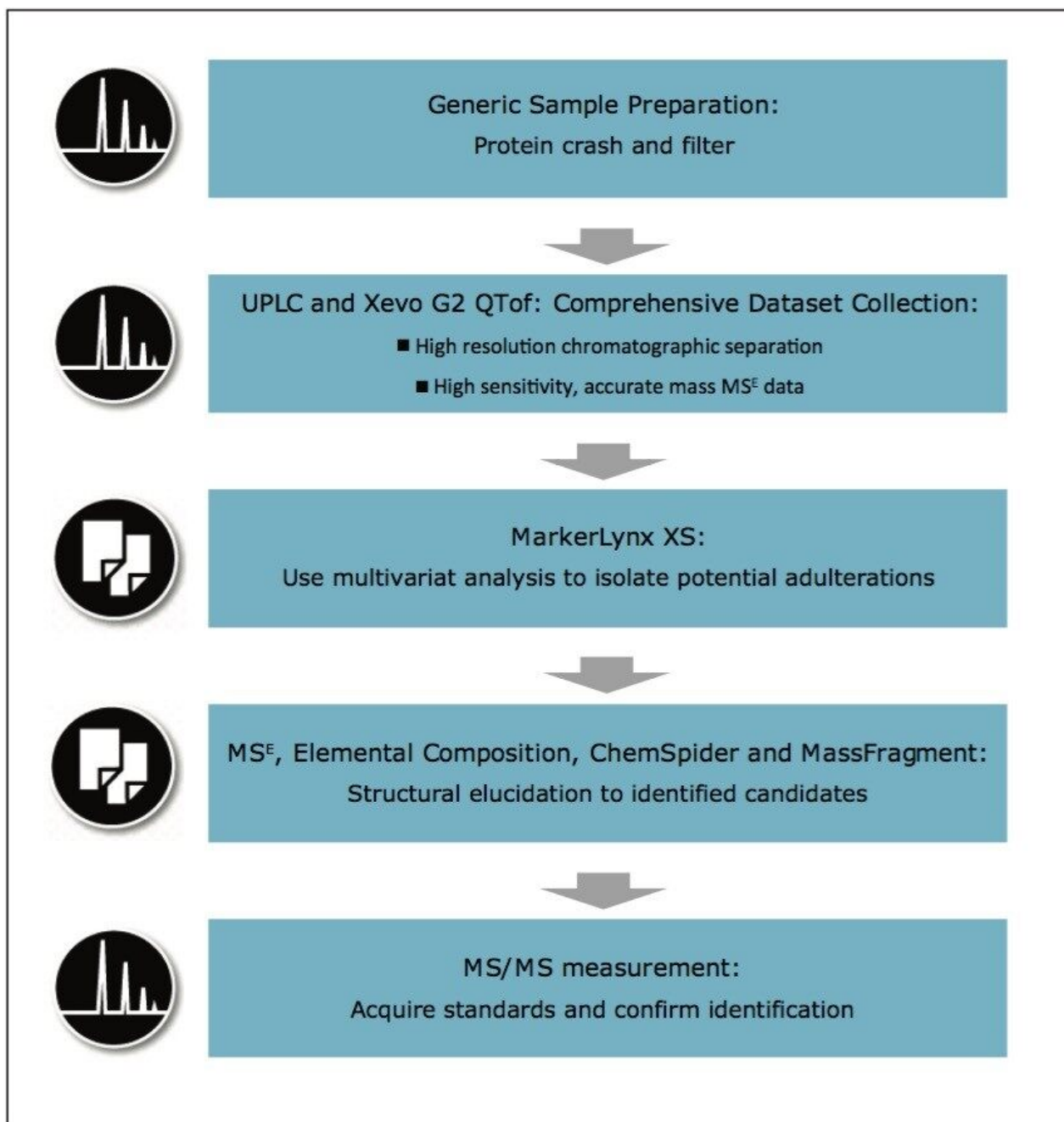


Figure 2. Workflow used to identify an unknown adulteration.

Employing an ACQUITY UPLC Column Manager (capable of holding up to four different analytical columns) allowed all of the injections for the study to be collected in a single sample list for the analyst's convenience. For statistical purposes, replicate injections made on the same column and in the same polarity were randomized for collection (re-ordered prior to processing).

The Use of Multivariate Analysis for Early Detection of Potential Food or Beverage Adulterations 5 Following acquisition, the data were batched processed using MarkerLynx XS, a statistical analysis software application manager. Due to the variation expected within each milk sample, the information from each analysis was investigated using a PLS-DA (Projection to Latent Structures Discriminant Analysis model). Each instrument polarity and UPLC column pairing was processed separately, making a total of four analyses, with each analysis taking approximately 15 minutes to process.

## ESI+, HSS T3 Column Analysis

MarkerLynx XS Software processing of the data in this analysis yielded the combination of plots shown in Figure 3.

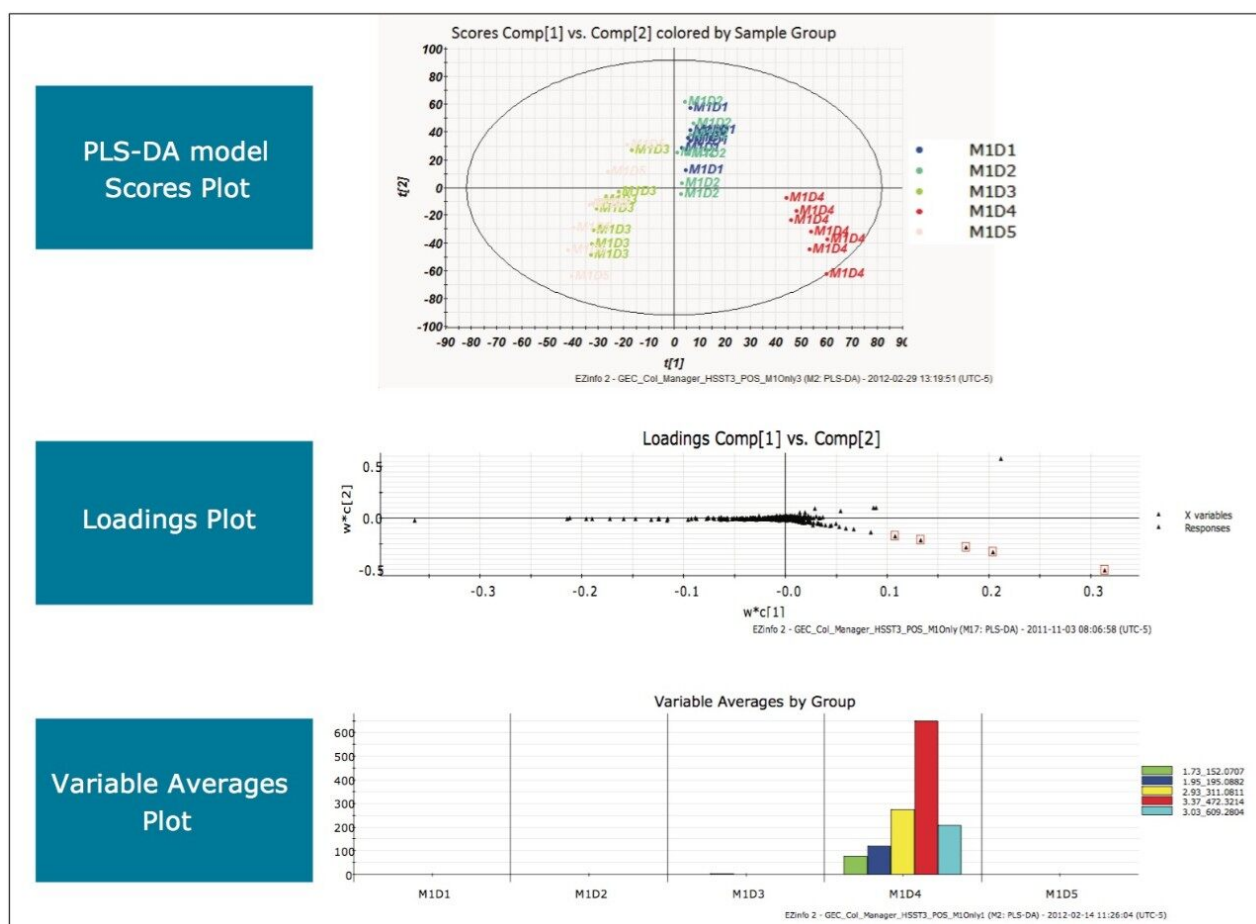


Figure 3. Scores, loadings, and variable average plots produced by MarkerLynx XS Software for the analysis of the five milk samples in ESI+ mode on an HSS T3 Column.

The scores plot allowed us to see a map of all the injections (observations) and ascertain which observations

were similar, or near each other, and which are dissimilar, or far apart. The Exact Mass Retention Time Pairs (variables), or EMRT's present in each injection are responsible for this similarity or variation, and are plotted in the loadings plot. A variable averages plot simply plots the average intensity of an EMRT found in all replicate injections for each group. Using Figure 3 as an example, we can see from the scores plot that something is different about M1D4 (Milk 1, Day 4), as compared with the milk on the other four days (M1D1, M1D2, M1D3, and M1D5). It stands true that M1D1 and M1D2 look tightly bound and something looks different about M1D3 and M1D5, but for now, the eye is drawn to the biggest difference of M1D4.

In the loadings plot, EMRTs found in all injections at the same level tend to reside in the center of the axis, in the swarm. The scores plot and loadings plot may be superimposed. The EMRTs responsible for causing M1D4 differences in the scores plot are found in the same quadrant, furthest away from the swarm. Highlighting these points provides the best chance of identifying an unknown contamination or adulterant. The variable averages plot is summoned from the highlighted points in the loadings plot. This shows that five compounds present in the milk on Day 4 are absent on all the other days, a very good indication of an adulteration. Transferring the EMRTs to the MarkerLynx XS browser allows Elemental Composition and a database search to be performed on the low energy function of the MS<sup>E</sup> data. The results are shown in Figure 4.

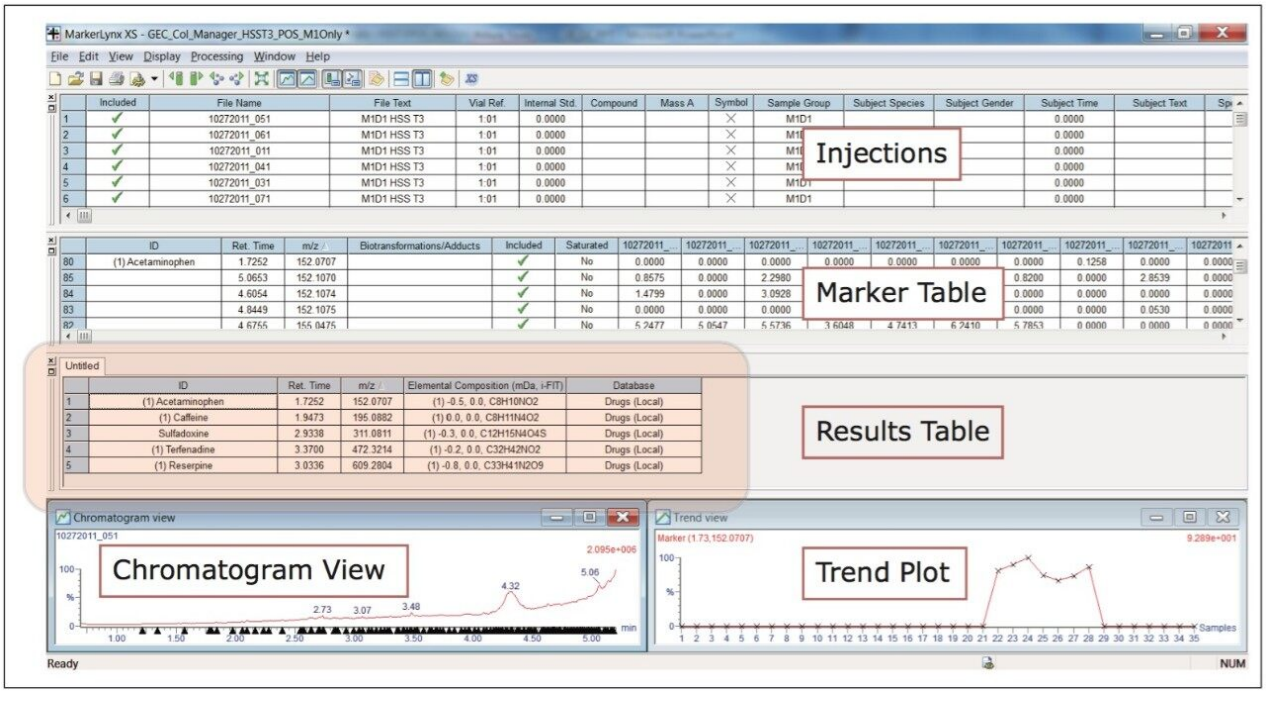
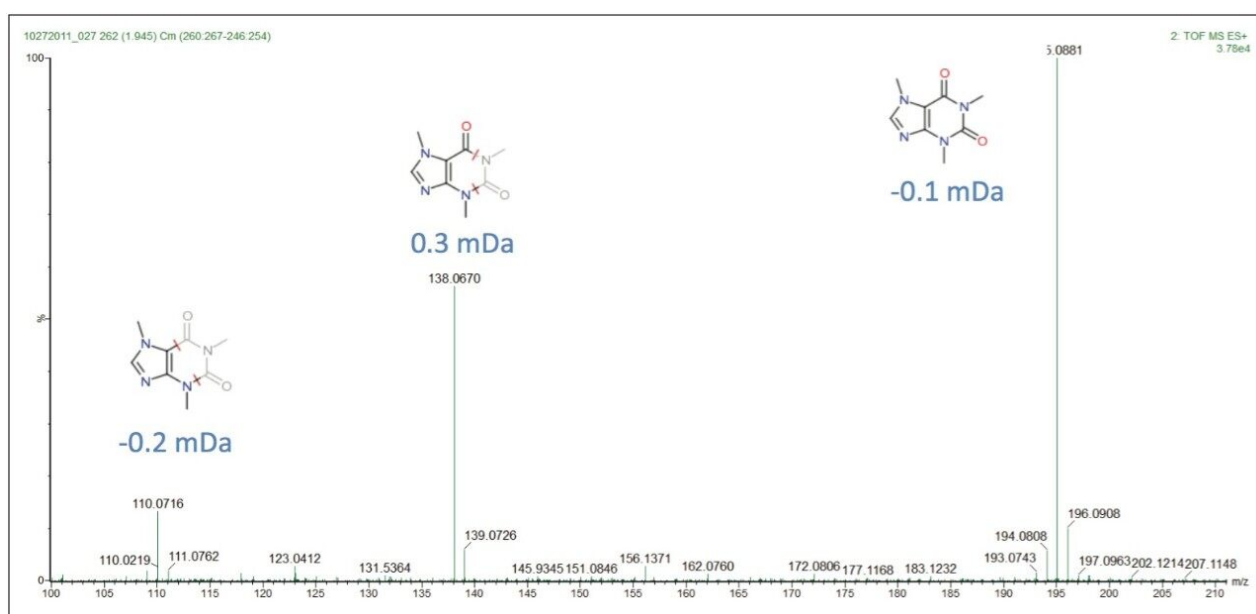


Figure 4. The highlighted region of the MarkerLynx browser shows the Elemental Composition and database search results for the highlighted EMRTs transferred from the loadings plot in Figure 3.

The proposed elemental composition and local database identification of the five EMRTs were an exact match to the five compound mixture in Table 1. This indicated an adulteration of the five compound mixture was made to the milk on Day 4. Proposed formulas from Elemental Composition were also searched against in ChemSpider <http://www.chemspider.com/>. Using the high energy function of the MS<sup>E</sup> data, and MassFragment Software, several key fragments with good mass accuracy were matched to the proposed compounds, which gave added confidence that correct assignments were originally made in the MarkerLynx XS Browser. Figure 5 shows possible structures assigned to key exact mass fragments for the component proposed as caffeine.



*Figure 5. Possible structures assigned to fragments (with mass error) from caffeine, the proposed compound from an elemental composition formula search in ChemSpider.*

To complete the workflow shown in Figure 2, confirmation would usually be obtained by running purchased standards in MS/MS mode, and comparing the retention times and MS/MS data to the high energy data in the MS<sup>E</sup> acquisition. This was deemed unnecessary for the work presented here – but would be an important step in the structural elucidation of an unknown compound.

Remaining outliers in other quadrants in the ESI+, HSS T3 analysis were also investigated, as shown in Figure 6. From the variable averages plot, it can be observed that every highlighted EMRT was present in all of the milk samples. Variations of component concentration in each milk sample gave rise to the differences in the position of the EMRTs in the loadings plot. Since a contamination or adulteration would be expected to be absent in a “normal sample”, these EMRTs were not investigated further.

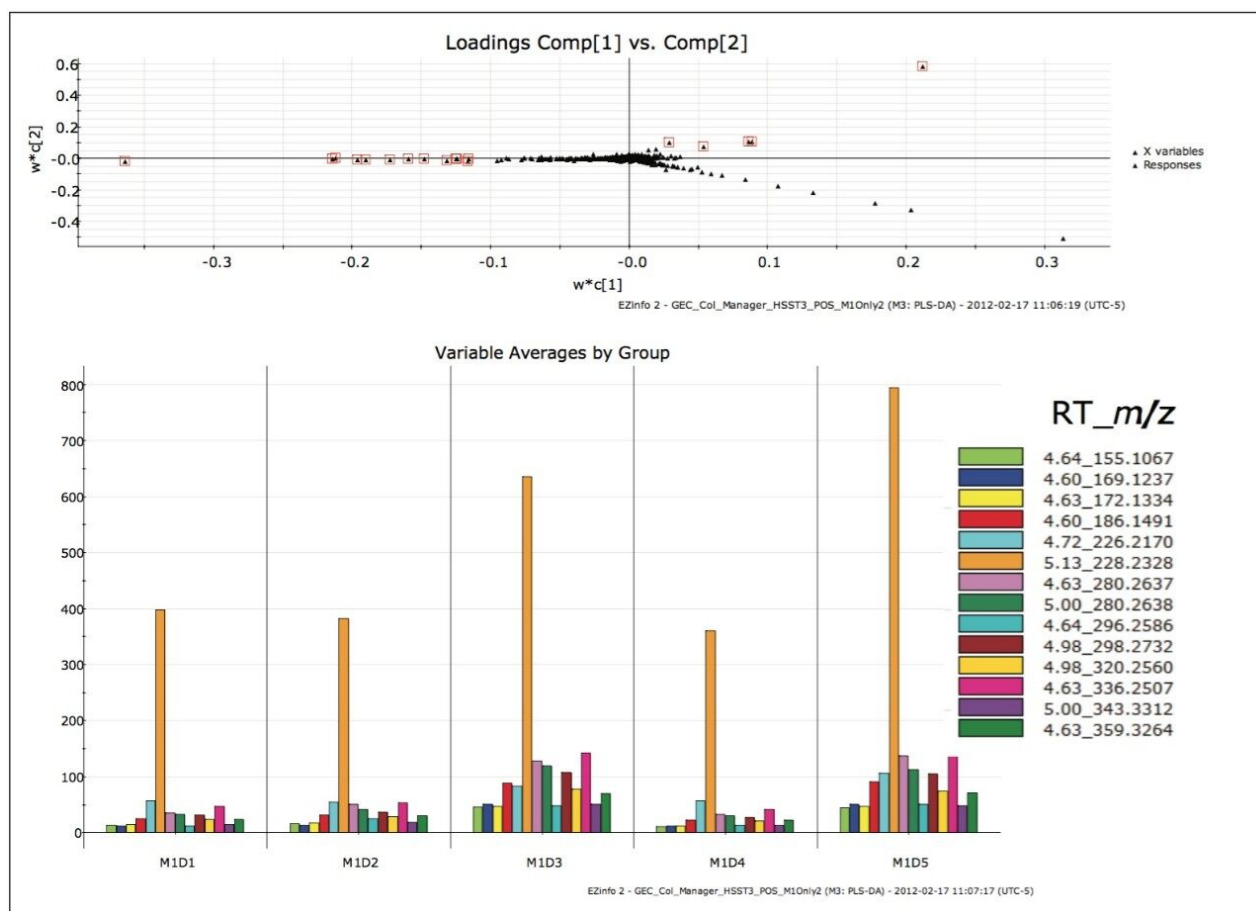


Figure 6. Loadings and variable average plots produced by MarkerLynx XS for the analysis of the five milk samples in ESI+ mode on an HSS T3 Column.

## ESI+, BEH Amide Column analysis

MarkerLynx XS processing of the data in this analysis yielded the combination of plots in Figure 7. Based on the separation of the milk sample on Day 3 (M1D3) from the rest of the days, the outlying points on the left were highlighted in the loadings plot as shown. From the variable averages plot produced, a unique EMRT, 1.75\_127.0730 (green), was observed in the milk on Day 3, as denoted by the arrows.



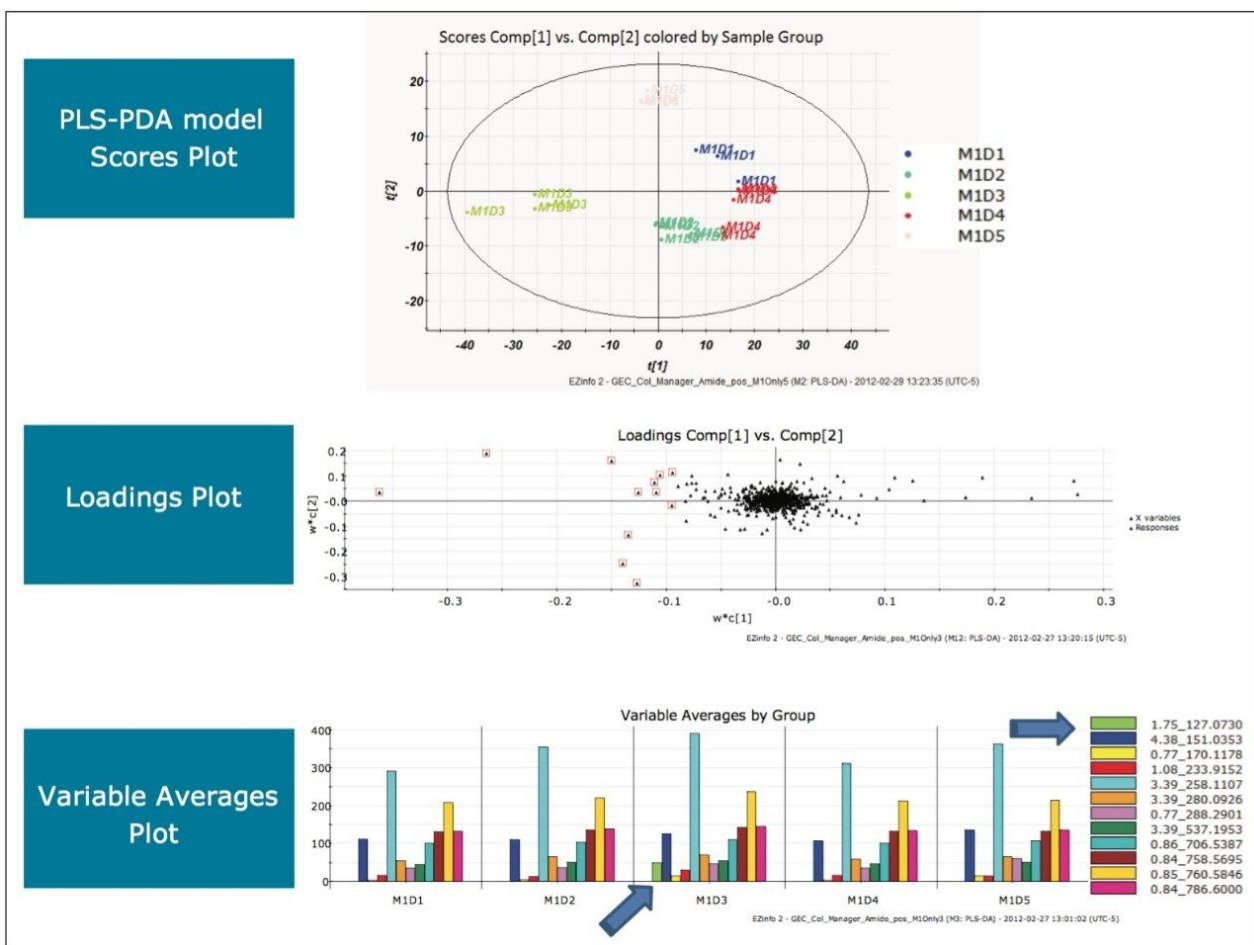


Figure 7. Scores, loadings, and variable average plots produced by MarkerLynx XS Software for the analysis of the five milk samples in ESI+ mode on a BEH Amide Column.

After transferring the marker to the MarkerLynx XS Browser and performing elemental composition, a database search indicated that the milk on Day 3 was adulterated with melamine (1,3,5-triazine-2,4,6-triamine), as shown in Figure 8.

	Ret. Time	m/z	Elemental Composition (mDa, i-FIT)	Database	ID
1	1.7529	127.0730	(1) -0.2, 0.0, C3H7N6	ChemSpider (Online)	(1) 1,3,5-triazine-2,4,6-triamine

Figure 8. The extracted region of the MarkerLynx XS Browser shows the elemental composition and database search results for the unique EMRT transferred from the loadings plot shown in Figure 7.

To complete the ESI+, BEH Amide analysis, the remaining outliers in the other quadrants were also

investigated, shown in Figure 9. Again, from the variable averages plot, we saw that all significant EMRTs highlighted in the loadings plot were present in the milk samples on all five days. This indicated that no further adulteration could be detected in this analysis.

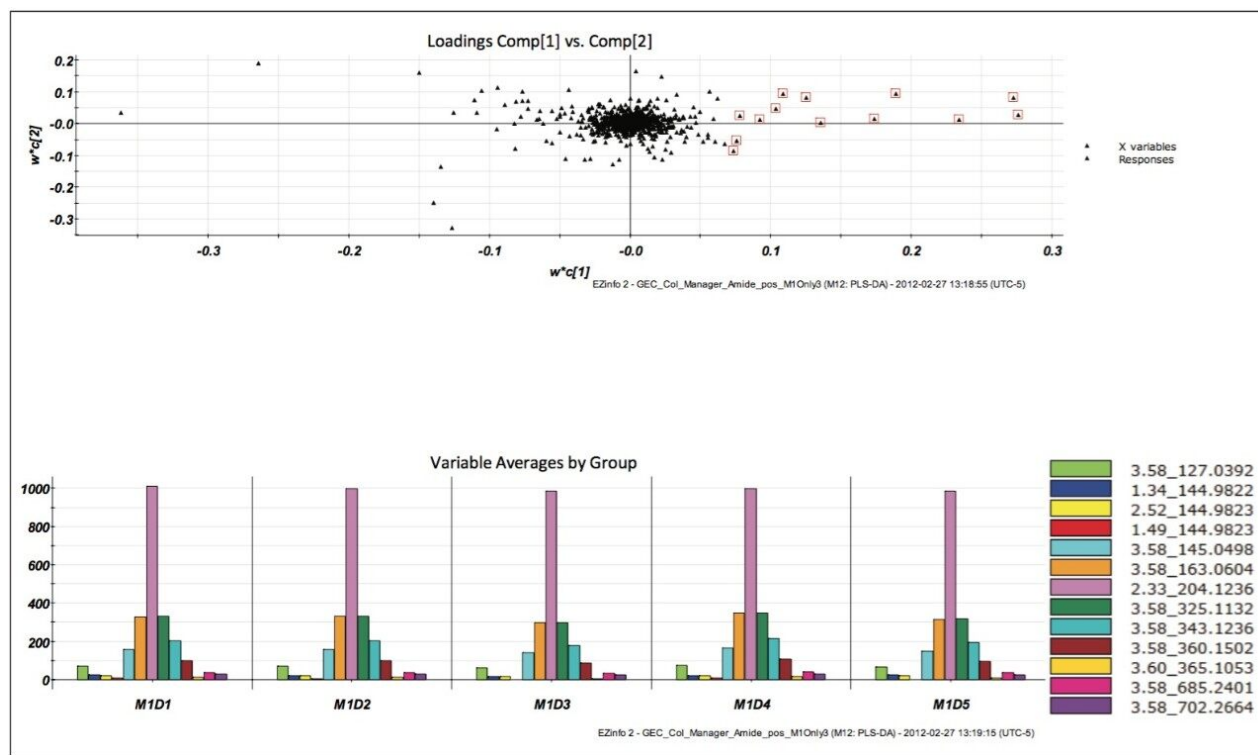


Figure 9. Loadings and variable average plots produced by MarkerLynx XS Software for the analysis of the five milk samples in ESI+ mode on a BEH Amide Column.

## ESI-, BEH Amide Column analysis

Repeating the MarkerLynx XS Software processing steps performed in the previous two analyses on the data gathered in electrospray negative mode on a BEH Amide Column yielded the plots shown in Figure 10.

Complete separation of milk injections made on Day 5 in the scores plot indicated that milk on Day 5 was different from the other days. Highlighting the EMRTs responsible for this difference and viewing the variable averages plot showed the presence of a unique EMRT, 1.26\_128.0087 (green), on Day 5 that was absent on all other days. After transferring the marker to the MarkerLynx XS browser and performing elemental composition, a database search, shown in Figure 11, indicated that the milk on Day 5 was adulterated with cyanuric acid (1,3,5-triazine-2,4,6-trione).



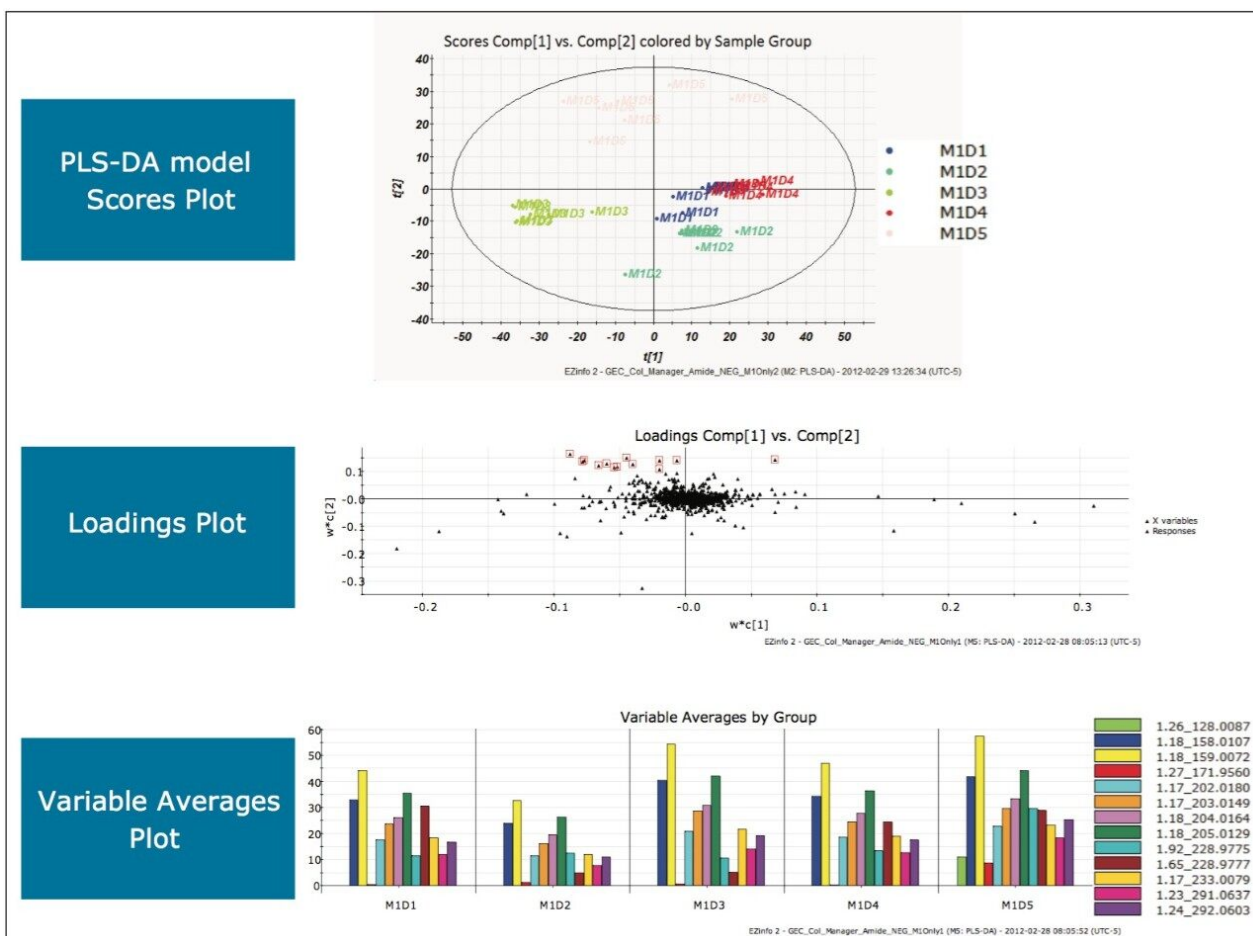


Figure 10. Scores, loadings, and variable average plots produced by MarkerLynx XS Software for the analysis of the five milk samples in ESI- mode on a BEH Amide Column.

	Ret. Time	m/z	Elemental Composition (mDa, i-FIT)	Database	ID
1	1.2647	128.0087	-0.9, 0.0, C3H2N3O3	ChemSpider (Online)	(1) 1,3,5-triazinane-2,4,6-trione

Figure 11. The extracted region of the MarkerLynx browser shows the elemental composition and database search results for the EMRTs transferred from the loadings plot shown in Figure 6.

The Use of Multivariant Analysis for Early Detection of Potential Food or Beverage Adulterations 12 The remaining outliers from other quadrants in the loadings plot were investigated. Again, from the variable averages plot (data not shown) all significant EMRTs were present in the milk samples on all five days, indicating no further adulteration within this analysis.

## ESI-, HSS T3 Column analysis

Following the same processing steps for this analysis generated the scores plot, loadings plot, and variable averages plot shown in Figure 12.

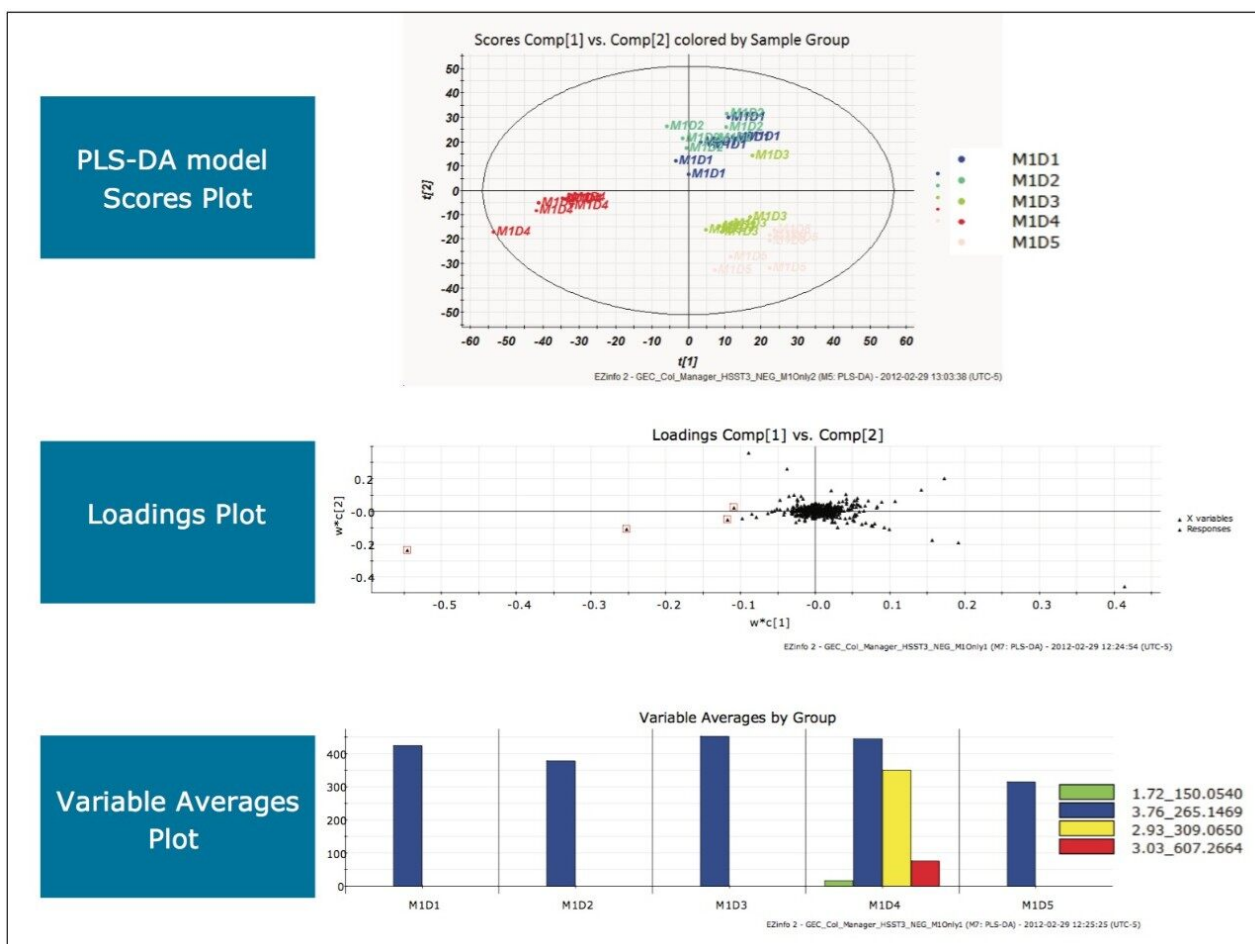


Figure 12. Scores, loadings, and variable average plots produced by MarkerLynx XS Software for the analysis of the five milk samples in ESI- mode on an HSS T3 Column.

## Conclusion

- Early adulteration detection in food and beverages can help prevent public health concerns, avoid costly recalls, assure quality, and protect brands.
- Adulterations in three milk samples, blind spiked over five days, were correctly detected and identified

using the proposed workflow.

- The experimental combination of ACQUITY UPLC, ACQUITY UPLC Column Manager, and Xevo G2 QTof enables the collection of a comprehensive data set in one sample list, freeing up time to work on other projects.
- Information-rich MS<sup>E</sup> data collection provides the precursor ion information to isolate unknown compounds of interest and the fragment ion information to elucidate the unknown compounds of interest in a very complex dataset.
- Using a generic MarkerLynx XS processing method with a standard multivariate analysis template provided swift access to potential adulterations in milk samples over a five-day period.
- Elemental composition and MassFragment structural elucidation tools provide the means to rapidly identify potential adulterants.
- Overall cost savings can be realized when experimental setup time for the chemist and data processing time for the analyst are reduced with the presented workflow to identify an unknown adulteration in food or beverages.

---

## References

1. <http://www.thefreedictionary.com/adulteration>
2. S McDonald. Nearly 53,000 Chinese children sick from milk. September 22, 2008. Associated Press. Google. Archived from the original on May 21, 2011.
3. J Macartney. China baby milk scandal spreads as sick toll rises to 13,000. The Times (London), September 22, 2008.
4. T Branigan. Chinese figures show fivefold rise in babies sick from contaminated milk. The Guardian (London), December 2, 2008.
5. China 'fake milk' scandal deepens. BBC News. April 22, 2004.
6. ConAgra Set to Settle Criminal Charges It Increased Weight and Value of Grain. New York Times. March 20, 1997.
7. V Modeland. Juiceless baby juice leads to full-length justice. *FDA Consumer*. June, 1988.

---

## Featured Products

ACQUITY UPLC System <<https://www.waters.com/514207>>

MassLynx MS Software <<https://www.waters.com/513662>>

Progenesis QI Software <<https://www.waters.com/134790655>>

720004327, May 2012

©2019 Waters Corporation. All Rights Reserved.