

Quantitative Analyses of Goitrin/Epigoitrin in *Isatis indigotica* Fort Extract and Its Medicinal Formulations using SFC/UV/MS

Rui Chen, Jacquelyn Runco, Li Yang, Kate Yu, Rui Wang, Yiming Li, Zhengtao Wang, Fred Li

日本ウォーターズ株式会社, Shanghai Traditional Chinese Medicine University, Roche R&D Center (China) Ltd



Abstract

In this application note we describe the investigation of employing SFC/UV/MS for the quantitative analyses of (*R*, *S*)-goitrin in *Isatis indigotica* Fort extract and different *Ban Lan Gen* powder formulations. The SFC methodology was compared to the reported NPLC method in analysis time, LOQ, and LOD.

Benefits

- The SFC/UV/MS-based assay for the quantitative analyses of *R*- and *S*-goitrin was eight times faster than the normal phase liquid chromatography (NPLC) method.
- With SFC/UV, the limit of detection (LOD) and limit of quantitation (LOQ) were one order of magnitude lower than those from NPLC/UV.
- Supercritical fluid chromatography (SFC) also overcame the challenges of incorporating MS detection in NPLC; thus, enabling a more sensitive detection of the goitrin content in *Isatis indigotica* Fort extract, and its medicinal formulations.
- With SFC/MS, the LOD and LOQ were three to four orders of magnitude lower than those from NPLC/UV.
- The results unequivocally demonstrated that SFC is a superior chiral chromatographic technique, in both speed and sensitivity, for natural product and traditional medicine research.

Introduction

The therapeutic use of natural products dates back thousands of years, and continues to be an integral part of basic healthcare in many countries today. For example, TCM makes up half of the “basic” medicines mandated by the Chinese government for public use at all levels of its healthcare system.¹ Since chirality is a fundamental characteristic of nature, it is not surprising that many of the therapeutic reagents in natural products or TCM are chiral. While one isomer could possess a desired therapeutic effect, its paired enantiomer could be inactive, have antagonist effects, or even have undesired effects. For example, *Ban Lan Gen* (the dried roots of *Isatis indigotica* Fort) is a commonly used TCM for treating fever and removing toxic heat. Pharmacokinetic studies indicate that the *R*-goitrin (epigoitrin) is one of the main constituents accounting for the antiviral activity of *Ban Lan Gen*.²⁻⁴ The *S*-goitrin (goitrin), however, is a potential goitrogen that causes an enlargement of the thyroid.⁵⁻⁶ It is, therefore, imperative to enantiomerically resolve *R*- and *S*-goitrin to better understand their respective pharmacological dose-response relationship and toxicity, for safe and effective use of the medicine.

Herein, we describe the investigation of employing SFC/UV/MS for the quantitative analyses of (*R*, *S*)-goitrin in *Isatis indigotica* Fort extract and different *Ban Lan Gen* powder formulations. The SFC methodology was compared to the reported NPLC method in analysis time, LOQ, and LOD.

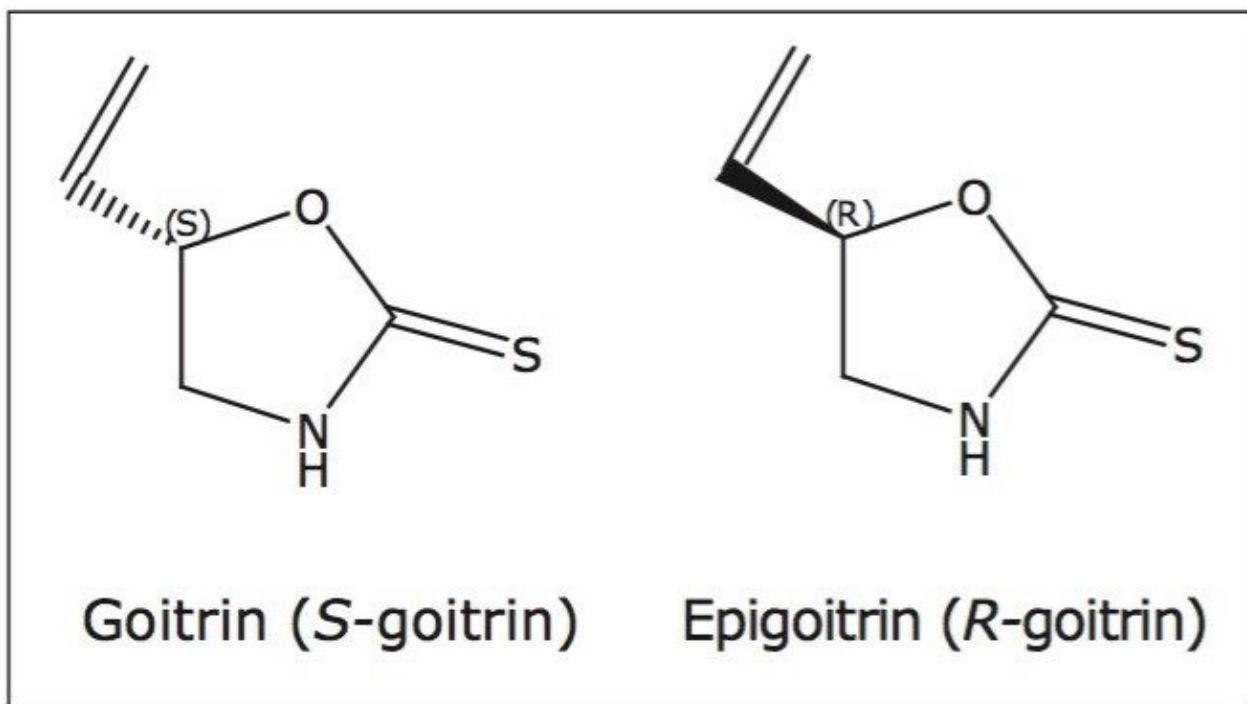


Figure 1. Chemical structures of goitrin.

Experimental

SFC method conditions

Flow rate:	3 mL/min
Co-solvent:	Methanol
Temp.:	40 °C
Back pressure:	120 bar
Injection vol.:	10 µL
PDA:	220 to 320 nm

Gradient: 20% to 20% in 2.0 min, 20% to 40% in 0.5 min,
held at 40% for 3.0 min, 40% to 20% in 0.5 min

Columns: (S, S)-Whelk-O 1 (4.6 x 250 mm, 10 µm)

Detection parameters:

MS conditions

Ion source: APCI positive

Corona current: 10 µA

Cone voltage: 20 V

Source temp.: 150 °C

Probe temp.: 450 °C

Mode: SIR @ $m/z=130$

PDA conditions

Scan range: 220 to 320 nm

Resolution: 1.2 nm

Compensated wavelength: 244 nm

Compensated reference: 270 to 320 nm

Data rate: 10 points/sec

Filter constant: Normal

Instrumentation:

All experiments were performed on a Waters Resolution SFC MS System controlled by MassLynx Software. The system consists of the following components: Fluid Delivery Module (FDM), Alias Autosampler, 10-port

Analytical-2-Prep Column Oven, 2998 Photodiode Array (PDA) Detector, and 3100 MS Detector.

Chemicals:

SFC-grade CO₂ was from Air Gas (Salem, NH, USA). HPLC-grade water and diethyl ether were purchased from Sigma-Aldrich (St. Louis, MO, USA). HPLC-grade methanol and goitrin racemate, shown in Figure 1, were purchased from Thermo Fisher (Allentown, PA, USA). *R*-goitrin and dried roots of *Isatis indigotica* Fort were gifts from Prof. Zhengtao Wang at Shanghai Traditional Chinese Medicine University (Shanghai, China). Three different *Ban Lan Gen* powder formulations were purchased from a local Chinese herb store.

Sample preparation:

For dried roots of *Isatis indigotica* Fort and *Ban Lan Gen* powder formulations, 100 mg of the solid was sonicated in 5 mL of water for 1 hr, and allowed to sit for 1 hr. The sample was then centrifuged, and the supernatant was filtered through a 0.45-μm filter. 5 mL of diethyl ether was added to the filtered solution, followed by a liquid-liquid extraction. The procedure was repeated three times. The combined diethyl ether extract (a total of 15 mL) was dried down and reconstituted in 5 mL of methanol.

Repeatability and inter-day repeatability for (*R*, *S*)-goitrin standards:

A goitrin standard solution of 0.005 mg/mL was prepared in methanol. Six replicates were performed for the repeatability studies. Inter-day repeatability was done in three days. Each day, six replicates were performed and the average peak area was used as one data point.

Linearity for (*R*, *S*)-goitrin standards:

A goitrin stock solution of 0.1 mg/mL was prepared in methanol. The stock solution was serially diluted. For each data point, six replicates were performed, and the peak area was averaged.

Recovery:

A total of 0.14 mg of (*R*, *S*)-goitrin standard (0.07 mg for each enantiomer) was spiked into the dried root of *Isatis radix* Fort in solid form. The mixture went through the same procedure as listed in “Sample preparation” before analysis. The ratio of the calculated “spike” and the true “spike” was defined as the recovery percentage.

Results and Discussion

An extensive chiral column screening using the goitrin racemate standard was conducted, and the (S, S)-Whelk-O 1 (4.6 x 250 mm, 10 μm) yielded the highest enantiomeric resolution. The method was further optimized for the *Isatis indigotica* Fort extract, primarily focusing on shortening the analysis time. The resulting chromatogram is shown in Figure 2 (A). Under the optimized condition, the *R*- and *S*-goitrin were

separated from the sample matrix, while maintaining the enantiomeric resolution between the *R*- and *S*-goitrin. The total analysis time was 6 min. This represents nearly an eight-fold increase in speed, compared to the reported NPLC method.⁵ In SFC, a combination of supercritical CO₂ and polar organic solvent(s), most commonly alcohol, are used as the mobile phase. Due to the inherent higher diffusivity and lower viscosity of supercritical fluid, it is not unusual that SFC provides a three- to eight-fold faster separation than NPLC.⁷

Figure 2 (B) shows the SFC/UV and MS chromatograms of the goitrin standards under the optimized conditions. The peaks were identified by running an *R*-enantiomer standard. Resolution, repeatability, inter-day stability (intermediate precision), LOD, and LOQ are summarized in Table 1.

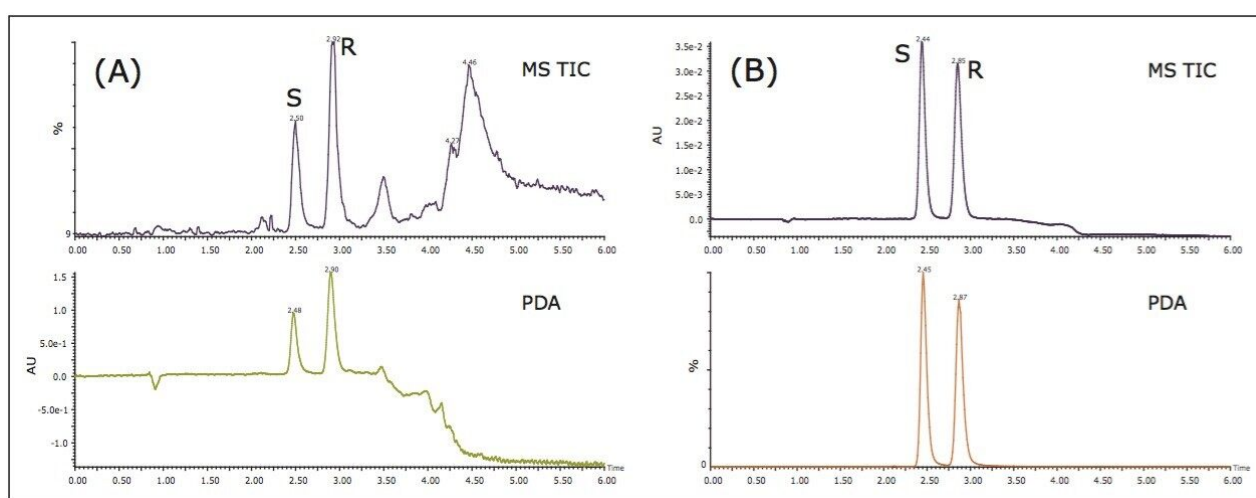


Figure 2. SFC chromatograms of (A) *Isatis indigotica* Fort extract; and (B) (*R, S*)-goitrin standard under optimized conditions.

	PDA		MS	
	S	R	S	R
Peak ratio (R/S)	1.01		1.00	
Resolution*	2.85		2.81	
Repeatability (n=6)	0.60%	0.73%	0.86%	0.53%
Inter-day (n=3)	0.68%	0.73%	3.08%	2.23%
Linearity range (mg/mL)	0.0005 to 0.05		0.00001 to 0.01	
LOD (ng/mL)**	100		2	
LOQ (ng/mL)**	200		10	
* $R_s = \frac{2(t_2 - t_1)}{1.7(w_{0.5,1} + w_{0.5,2})}$, where t is the retention time and $w_{0.5}$ is the peak width at half height				
**LOD is defined as S/N=10, and LOQ is defined as S/N=3				

Table 1. Characteristics of the optimized analytical method for goitrin analysis. The sample concentration was 0.005 mg/mL except for LOD and LOQ determination.

Repeatability with PDA detection was below 1%, and similar for both intra-day and inter-day experiments. Using MS detection, the inter-day variation was slightly higher than the intra-day variation.

The LOD and LOQ with PDA detection were one order of magnitude lower than those reported using an NPLC method.⁵ In our experiments, reference wavelength compensation was used in data acquisition. Reference wavelength compensation collects wide-band absorbance data in a region where the analytes have minimal or no absorption. The detector calculates the compensation value by averaging the absorbance values within the selected range of wavelengths. The averaged value is then subtracted from the absorbance value. Since the main absorbance (220 to 320 nm in our experiments) includes the reference bands (270 to 320 nm), noises from common sources, such as mechanical and thermal noise, can be effectively reduced; hence, increasing S/N.⁸

With MS detection, the LOD and LOQ were 2 and 10 ng/mL, respectively. At LOD, with a 10 μ L injection, as little as 100 pg of each goitrin enantiomer was detected. This represents a three to four orders of magnitude improvement in detection sensitivity over the reported NPLC method with UV detection.⁵ This improvement, of course, arises from a more sensitive MS detection. However, in NPLC, hexane, heptanes, dichloromethane (DCM), isopropanol, and their mixtures are often used as the mobile phase. These solvents are not ideal, if not prohibitive, for MS detection. SFC, on the other hand, uses CO₂ combined with MS-friendly alcohols, most commonly methanol, as the mobile phase. This, in turn, enables the incorporation of sensitive MS detection in SFC, often necessary for quantitative chiral analysis. SFC hyphenated with MS has indeed become a viable analytical tool in pharmaceutical research.⁹ Furthermore, the use of alcohol in SFC is more cost effective and environmentally sustainable than the use of hexane, heptanes, and halogenated solvents in NPLC.

Calibration curves for both UV and MS were constructed by analyzing the serially-diluted goitrin standards in triplicates. The results are shown in Figure 3. All calibration curves exhibited excellent linearity with the square of correlation coefficient (R^2) above 0.999. There are also superb agreements between the *R*- and *S*-goitrin with both UV and MS detection.

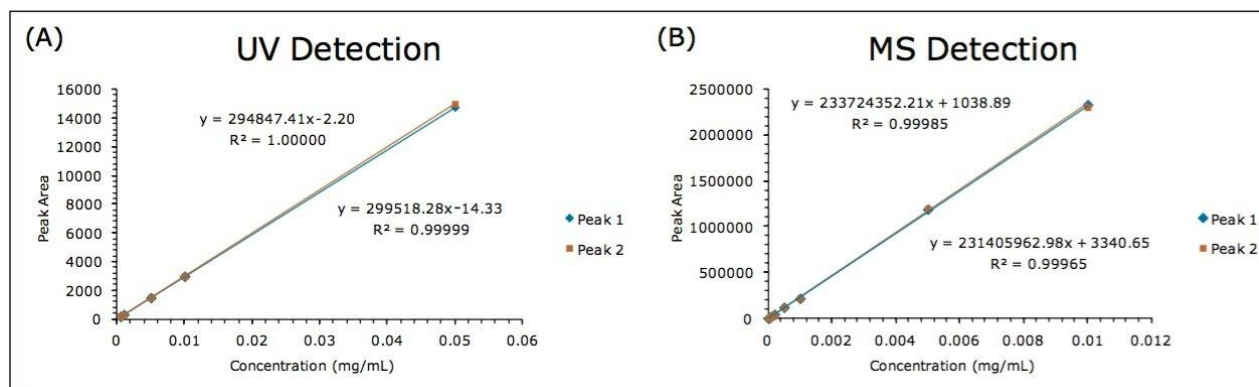


Figure 3. Calibration curves for (*R*, *S*)-goitrin with (A) UV detection; and (B) MS detection.

Analyses of *Isatis indigotica* Fort Extract

Table 2 summarizes the results of the analyses of *Isatis indigotica* Fort extracts. Compared to the results from the goitrin standards shown in Table 1, there are slightly higher variations with both UV and MS detection. It is also noted that batch-to-batch variation was consistently between 5% and 6%. This increased variation is likely due to the epiprogoitrin-epigoitrin transformations during the sample preparation procedure.

	PDA		MS	
	Peak 1	Peak 2	Peak 1	Peak 2
Peak ratio (R/S)	1.99		2.03	
Concentration (mg/mL)	0.00737	0.0145	0.00832	0.0171
Amount (mg/100 mg sample)	0.0368	0.0723	0.0416	0.0853
Ratio cal. from amount (R/S)	1.96		2.05	
Repeatability (n=6)	0.52%	1.40%	0.62%	1.70%
Inter-day (n=3)	2.00%	1.69%	3.21%	3.87%
Batch-to-batch repeatability (n=3)	5.69%	5.59%	6.29%	5.07%
Recovery	89.2%	100.4%	98.9%	105.0%

Table 2. Results of the analyses of *Isatis indigotica* Fort extracts.

Analyses of three different *Ban Lan Gen* powder formulations

The three different powder formulations were all marketed as “*Ban Lan Gen* powder” by three different manufacturers. All of the powders are similar in appearance and tan in color. Figure 4 shows the SFC/MS chromatograms of the three formulations. Quantitative results are summarized in Table 3. It is evident that the three powder formulations differ substantially in goitrin content. Formulation 1 contains only detectable, but not quantifiable, goitrin, i.e. the concentration was between 2 to 10 ng/mL. Formulation 3 contains five times more goitrin than Formulation 2. It is also interesting to note that the R/S ratios are different between formulations 2 and 3. Currently, goitrin content is determined by reverse phase HPLC (RPLC)-based methodology¹⁰⁻¹¹ where *R*- and *S*-goitrin are not resolved. Clearly, with varying R/S ratio evidenced in this study, the goitrin content cannot be accurately assessed via RPLC. Our observation underscores the importance of the enantiomeric resolution of *R*- and *S*-goitrin for better quantitation of the bioactive *R*-goitrin, better controlled pharmacological studies such as dose-response relationship and toxicity, and better quality control in *Ban Lan Gen* formulation manufacturing.

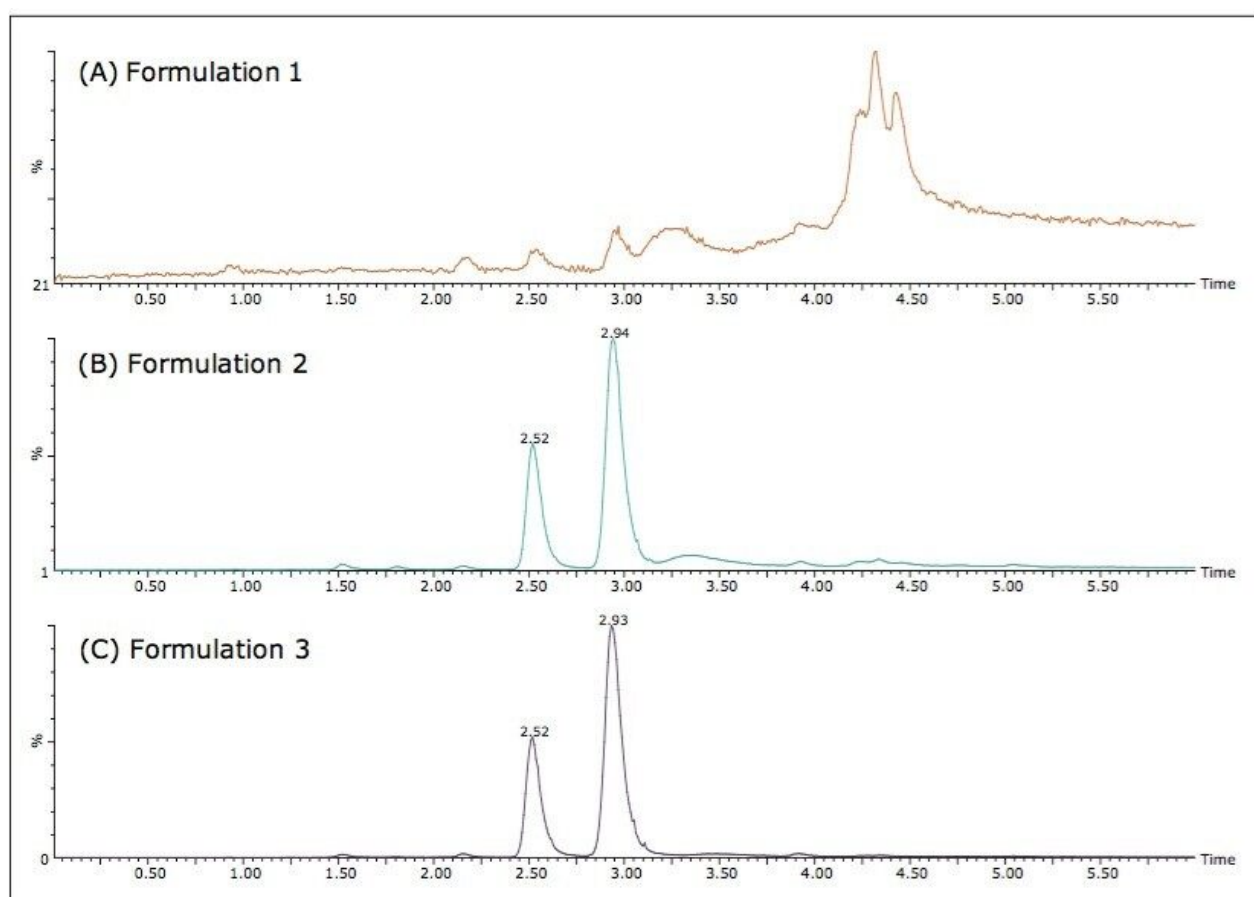


Figure 4. SFC/MS chromatograms of three different *Ban Lan Gen* powder formulations.

	Formulation 1		Formulation 2		Formulation 3	
	<i>S</i>	<i>R</i>	<i>S</i>	<i>R</i>	<i>S</i>	<i>R</i>
Ratio (<i>S/R</i>)			2.13		2.22	
Concentration (mg/mL)	Not Quantifiable		0.000690	0.00147	0.00323	0.00715
Amount (mg/100 mg)			0.00345	0.00735	0.0161	0.0358

Table 3. Results of the analyses of three different *Ban Lan Gen* formulations. All experiments were done in triplicates.

Conclusion

We described the development of an SFC/UV/MS-based assay for the qualitative and quantitative analyses of *R*- and *S*-goitrin. Under optimized conditions, the goitrin can be separated from the sample matrix while maintaining the enantiomeric resolution between the *R*- and *S*-goitrin. The total analysis time was 6 min, representing an eight-fold increase in speed, compared to the NPLC method. Excellent repeatability, intermediate precision, and linearity were achieved with the developed assay. With UV detection, the LOD and LOQ were one order of magnitude lower than those derived from NPLC/UV. With MS detection, the LOD and LOQ were three to four orders of magnitude lower than those from NPLC/UV.

The developed assay was then applied to the analyses of three different *Ban Lan Gen* formulations. The three powder formulations differ substantially in goitrin content. It is also noted that the *R/S* ratio varies from sample to sample. Our observation underscores the importance of the enantiomeric resolution of *R*- and *S*-goitrin for better quantitation of the *R*-goitrin, the active enantiomer contributing to the antiviral activity. SFC should be considered an integral part of the overall analytical platform for TCM and natural product research, especially in the area of chiral analysis.

References

1. http://www.gov.cn/gzdt/2009-08/18/content_1395524.htm

2. Wang R, Yang H, Yang Q, Huang S, and Wang Z. *Chinese Traditional and Herbal Drugs*, 2010; 41 (3), 478-480.
3. Xu L, Huang F, Chen T, and Wu J. *Chinese Journal of Natural Medicine*, 2005; 3(6), 359-360.
4. Huang F, Xiong Y, Xu L, and Liu X. *Journal of China Pharmaceutical University*, 2006; 37(6), 519-522
5. Nie L, Wang G, Dai Z, and Lin R. *Chinese Journal of Chromatography*, 2010; 28(10), 1001-1004.
6. Astwood EB, Greer MA, and Ettlinger MG. *J. Biol. Chem.*, 1949; 181, 121.
7. Zhang Y, Wu D, Wang-Iverson D, and Tymiak AA. *Drug Discovery Today*, 2005; 10(8), 571-577.
8. Subbarao L, Cole J, and Chen R. LCGC, *The Application Notebook*; 2009, September; 50-51.
9. Chen R. *Chromatography*, 2009; 2(1), 11-13
10. An Y, Jia X, Yuan H, Sun E, and Xu Z. *China Journal of Chinese Materia Medica*, 2008; 33(18), 2074-2076.
11. An Y, Jia X, Chen Y, Sun E, and Jin X. *Chinese Traditional and Herbal Drugs*, 2008; 39 (11), 1739-1741.
12. Galletti S, Bernardi R, Leoni O, Rollin P, and Palmieri S. *J. Agric. Food Chem.*, 2001; 49, 471-476.

Featured Products

2998 Photodiode Array (PDA) Detector <<https://www.waters.com/1001362>>

MassLynx MS Software <<https://www.waters.com/513662>>

720004206, January 2012