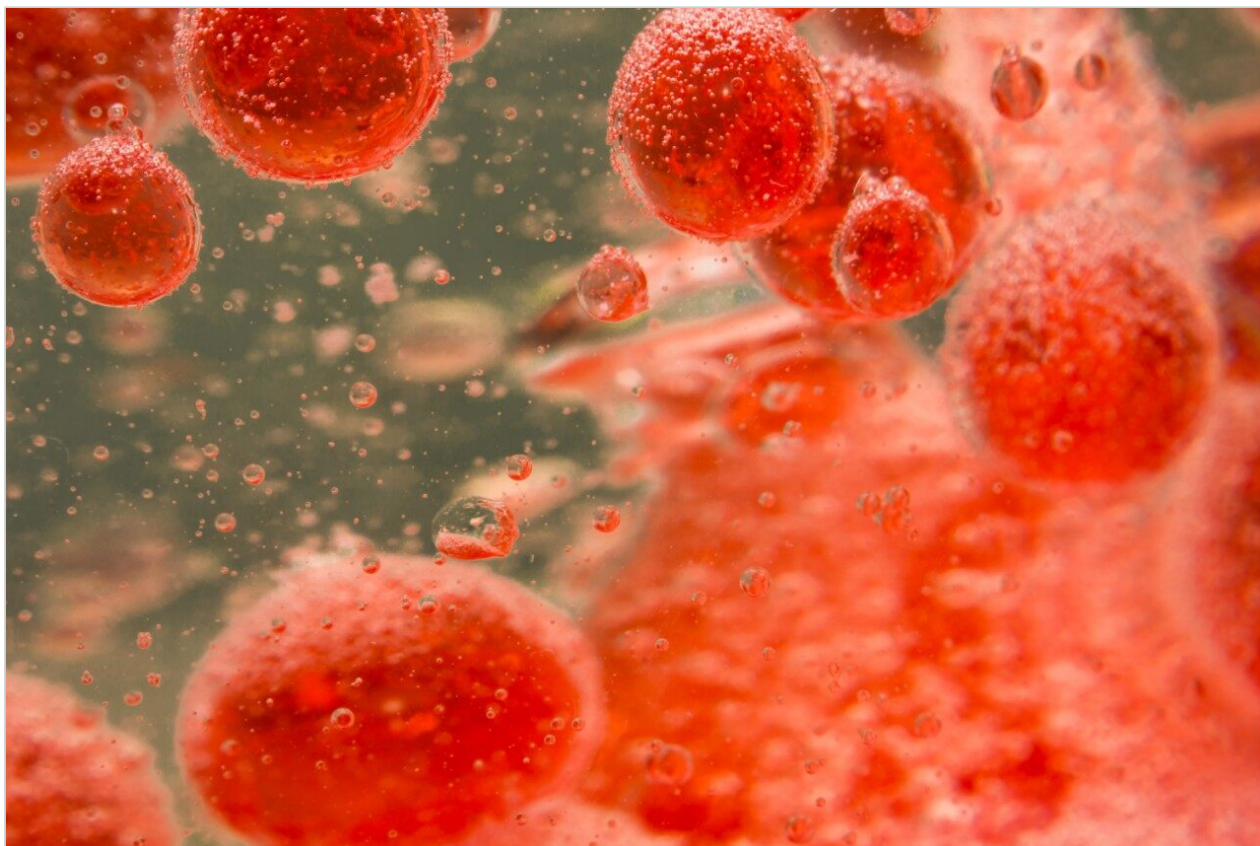


응용 자료

Rapid Lipid Profiling of Serum by Reverse Phase UPLC-Tandem Quadrupole MS

Mark Ritchie, Evelyn Goh

Waters Corporation



For research use only. Not for use in diagnostic procedures.

Abstract

This application note demonstrates that the ACQUITY UPLC/Xevo TQ MS System offers lipidomics researchers the opportunity to achieve high performance reverse phase separation of complex lipid mixtures with highly sensitive and accurate detection.

Benefits

- Delivers a rapid 10-min MRM method with Xevo TQ MS for 194 lipids in serum utilizing both positive and negative ESI modes.
- Achieves a chloroform-free, high performance, reverse phase ACQUITY UPLC separation of complex lipid mixtures.
- Provides a streamlined workflow for instrument setup, analysis, and results processing using IntelliStart, Quanpedia, and TargetLynx.

Introduction

The field of lipidomics is gaining momentum at an incredible pace. The biological knowledge and potential applications are becoming very attractive to those seeking to better understand disease, and for those looking to develop diagnostics. From an analytical science perspective, there is not yet a dominant technique or technology platform, and many researchers have adapted workflows from other life science applications to solve their problems.

In many laboratories, samples are analyzed directly after sample preparation by ESI-MS without separation, which does provide short acquisition times but it can also create problems.

The dynamic range and sensitivity of the experiment is undoubtedly affected by the complexity of the biological sample. Ion suppression from the most abundant analytes and contaminants must be considered and this is compounded when salt and adduct formation are taken into account. These effects combined limit the detection and quantification of isobaric and low abundance lipid species.

Specificity and quantitation accuracy may also be affected when dealing with lipids in a non-separated mixture. Lipids are a diverse class of related species that differ through minor variations in structure. Lipids

within the same class are typically distinct from each other by 2 Da, and as such are easily separated; however, inter-class interference is possible.

Experimental

Sample preparation

Monkey plasma was extracted with cold methanol, and the soluble supernatant was dried and re-dissolved in chloroform/methanol (1:1). After adding non-biological lipids for sample normalization (the same lipids used in tuning), the sample was diluted 10x with acetonitrile. Five μL of injected sample was equivalent to 0.14 μL of raw serum and the final solvent composition was injected in acetonitrile/chloroform/methanol (90:5:5). Triplicate injections were analyzed.

LC conditions

LC conditions were previously published^{1,2}

LC system:	Waters ACQUITY UPLC
Column:	ACQUITY HSS T3, 2.1 x 100 mm, 1.8 mm
Column temp.:	65 °C
Flow rate:	500 $\mu\text{L}/\text{min}$
Mobile phase A:	Acetonitrile/water (40:60) with 10 mM ammonium acetate pH 5.0
Mobile phase B:	Acetonitrile/isopropanol (10:90) with 10mM ammonium acetate pH 5.0
Gradient:	40% to 100% B/10 min

MS conditions

MS system:	Xevo TQ MS
Ionization mode:	Positive/negative switching
Capillary voltage:	3.2 kV
Desolvation temp.:	500 °C
Source temp.:	150 °C
Acquisition method:	Multiple reaction monitoring (MRM)
Collision cell pressure:	3.5×10^{-3} mbar

MS system tuning

IntelliStart is used to assist the user in the generation of a new analysis, as shown in Figure 1. Assisted MRM tuning for phospholipids was performed for each class with IntelliStart using mixed standards, as shown below in Table 1. For established methods, all of the required experimental parameters including the data analysis template were automatically loaded from Quanpedia.

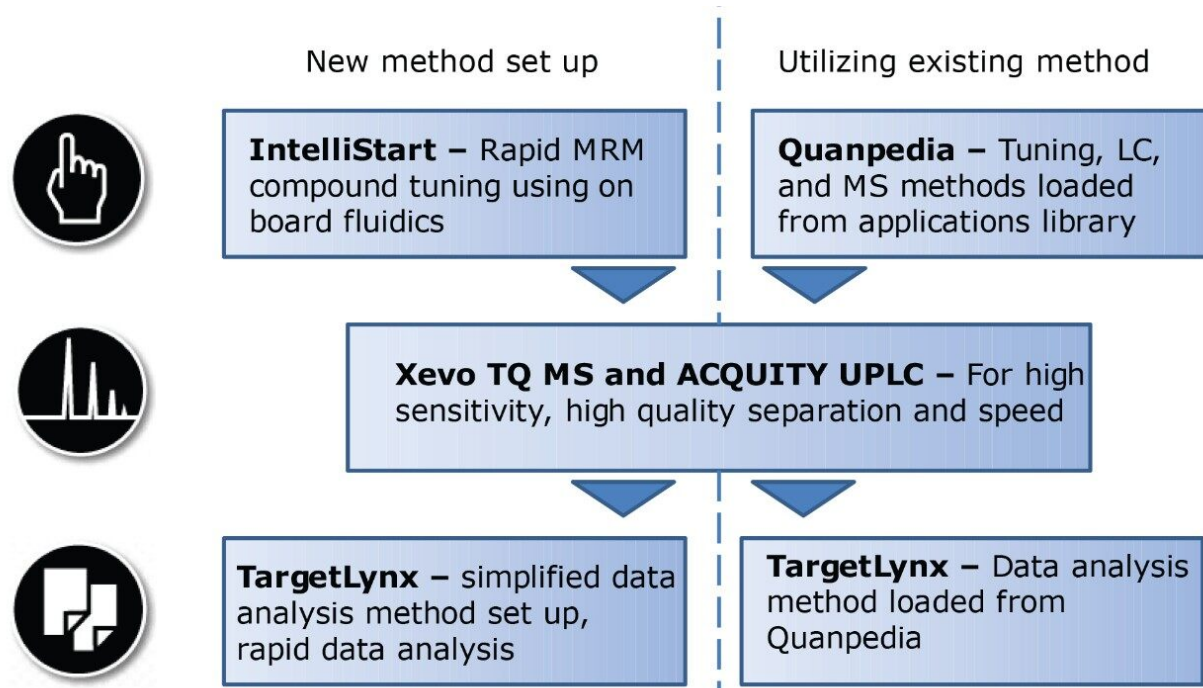


Figure 1. Workflow for designing MRM experiments and utilization of Quanpedia for established methods.

Compound	Formula Mass	Parent m/z	Cone voltage	Daughter m/z	Collision Energy	Ionization mode
DMPA	592.5	591.5	50	153.0	32	ESI-
DMPG	666.6	665.5	50	153.0	34	ESI-
DMPS	679.6	678.5	42	591.5	22	ESI-
C8 PI	586.5	585.4	48	241.0	30	ESI-
DMPC	677.5	678.6	36	184.1	30	ESI+
L-SM	646.5	647.6	36	184.1	24	ESI+
C17-Cer	551.5	552.6	20	264.2	26	ESI+
Glu-Cer	587.5	588.5	20	264.2	20	ESI+
DMPE	635.5	636.5	26	495.5	18	ESI+
Lyso PC	551.5	552.5	42	184.1	26	ESI+
Lyso PE	435.5	452.3	26	313.2	18	ESI+

Table 1. Summary of IntelliStart automated tuning report.

ESI+		ESI-	
Lipid Class	No. MRMs	Lipid Class	No. MRMs
Lyso PE	10	Lyso PS	4
Lyso PC	8	Lyso PI	4
Ceramides	8	PIs	22
Glucoceramides	13	PAs	11
PEs	38	PGs	11
Sphingomyelins	11	PSs	20
PCs	36		

Table 2. Summary of classes of lipid MRMs used.

Results and Discussion

Extracted ion chromatograms for target lipids were easily generated using TargetLynx. Mass chromatograms visualized in the MassLynx chromatogram window can be used to generate quantification methods in TargetLynx, with a single mouse click to transfer retention time, channel, and MRM information. Additional information may be entered to normalize or quantify from an internal or external standard. Once generated, the TargetLynx method can be reused for later experiments.

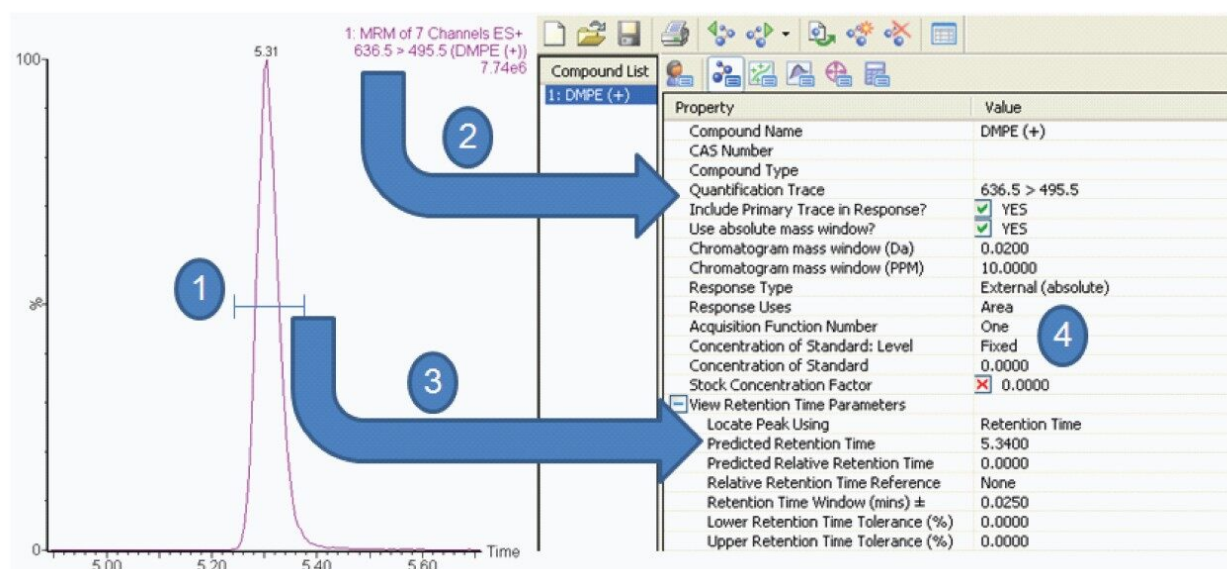


Figure 2. Setup for TargetLynx automated data extraction. 1.) Right click and drag across a peak of interest in the chromatogram browser. 2.) MRM transition is automatically added to the compound information. 3.) Observed retention time is automatically added. 4.) Measured area can be normalized, or converted to an absolute value by comparison to standard compound.

Targeted phospholipids were measured over approximately five orders of dynamic range. Areas under the extracted mass chromatograms were exported from TargetLynx, and selected lipid intensities are shown in Figure 3. The average %RSD between the three replicates for these intensity measurements was under 10%.

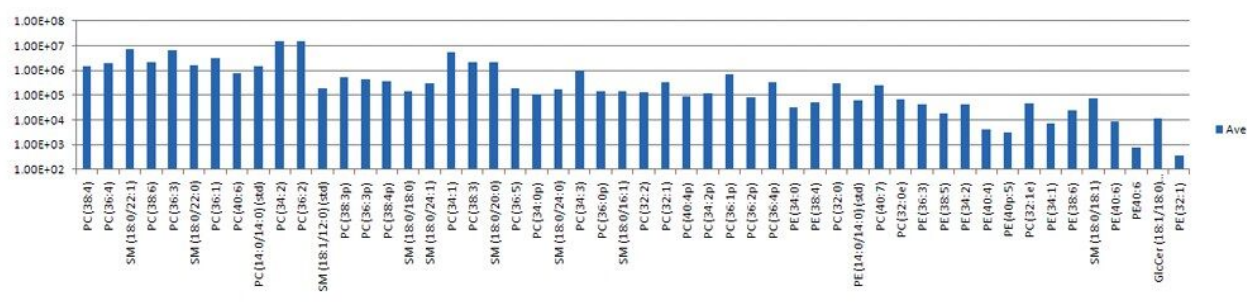


Figure 3. Intensities of selected serum lipids.

As previously noted^{1,2} this chromatographic method provides a reliable and reproducible separation of lipids. From this data it is also apparent that lipids in the same class can be separated cleanly and predictably. Figure 4 shows the separation of unsaturated ceramides and glucoceramides as an example. As the aliphatic chain is extended by two carbons, approximately 30 seconds is added to the retention time. Errors in quantification of lipids are often seen in infusion experiments due to overlapping isotopic patterns of lipids that differ by only a single saturated bond. In these cases, the mono-isotopic ion of the higher mass lipid species overlaps with the M+2 isotope of the lower and therefore shows increased abundance for that lipid. In this UPLC method, however, this type of variation in lipids results in significant and predictable chromatographic separation, as shown in Figure 5. In the example shown here, PC 36:1, PC 36:2, PC 36:3, PC 36:4, and PC 36:5 were each separated by approximately 20 s from their closest relative, with the most saturated being the earliest eluting species. In this way, the problem of overlapping isotopic patterns can be overcome.

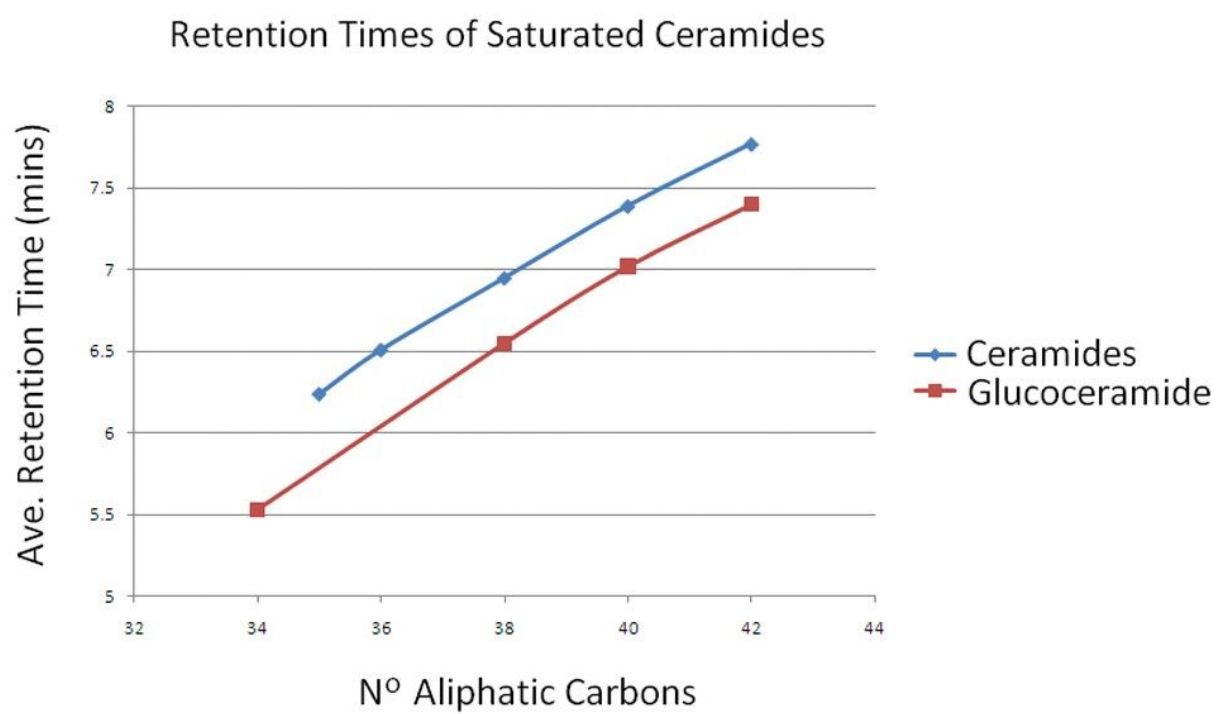


Figure 4. Retention times of saturated ceramides and glucoceramides show predictable elution patterns based on aliphatic carbon chain length when separated by reverse phase UPLC.

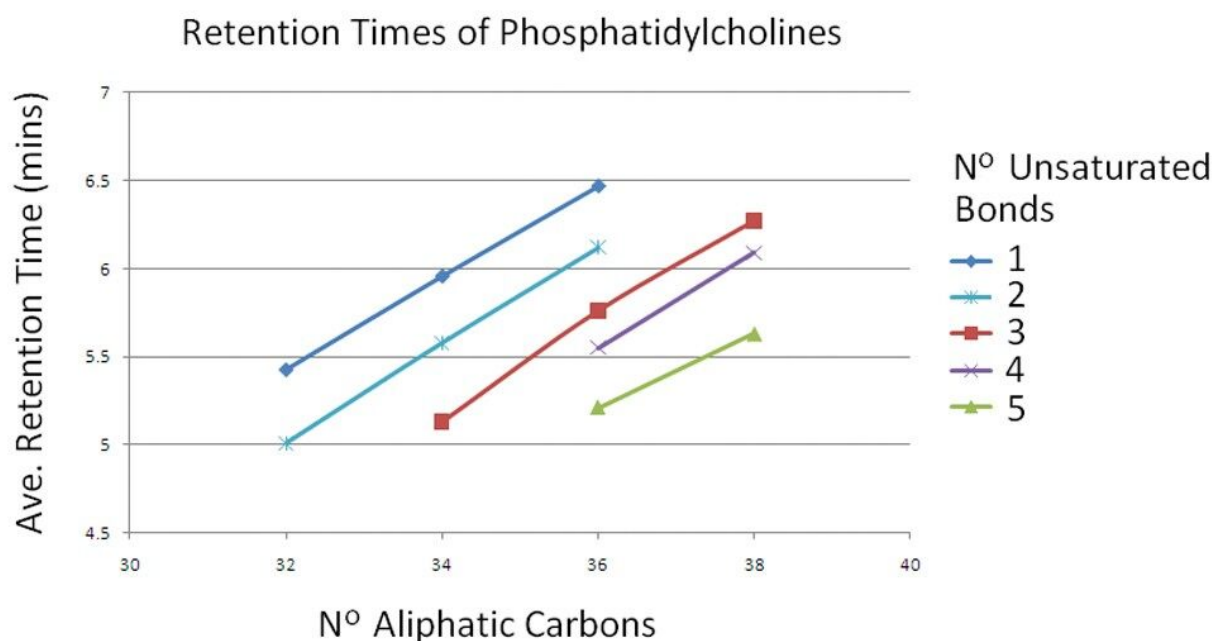


Figure 5. Retention times of differentially saturated PCs show predictable elution patterns relating to the degree of saturation when separated by reverse phase UPLC. This helps to distinguish isotopic interference brought about by the m/z difference of 2 Da, where the monoisotopic ion of the higher mass (less saturated) lipid species overlaps with the $M+2$ isotope of the higher mass (less saturated) lipid species, which would affect quantitation in un-separated mixtures.

Conclusion

The ACQUITY UPLC/Xevo TQ MS System offers lipidomics researchers the opportunity to achieve high performance reverse phase separation of complex lipid mixtures with highly sensitive and accurate detection. The reverse phase method uses more stable and less toxic solvents than the usual normal phase separation methods applied to lipidomics, and it is able to differentiate between similar and isotopically interfering species.

In addition to the benefits of separation of similar species, UPLC's concentration effect and reduction in ion suppression improve the performance dramatically compared to infusion or HPLC experiments. The sensitivity of the technique is apparent as the sample load required by this approach was 1/10th of the sample load that would typically be used in an infusion experiment.

The use of IntelliStart for rapid automated tuning, Quanpedia to generate methods, and TargetLynx for data review provide a simple workflow for efficiently extracting qualitative and quantitative information from large data sets.

References

1. Castro-Perez JM, Kamphorst J, DeGroot J, Lafeber F, Goshawk J, Yu K, Shockcor J, Vreeken RJ, Hankemeier T. Comprehensive LC-MS^E Lipidomic Analysis using a Shotgun Approach and Its Application to Biomarker Detection and Identification in Osteoarthritis Patients. *J. Proteome Res.*, 2010, 9 (5), pp 2377–2389.
2. Shockcor J, Crowe H, Yu K, and Shion H. Analysis of Intact Lipids from Biological Matrices by UPLC/High Definition MS. Waters Application Note 720003349EN.

Featured Products

[ACQUITY UPLC System <https://www.waters.com/514207>](https://www.waters.com/514207)

[MassLynx MS Software <https://www.waters.com/513662>](https://www.waters.com/513662)

[TargetLynx <https://www.waters.com/513791>](https://www.waters.com/513791)

[Quanpedia <https://www.waters.com/10148049>](https://www.waters.com/10148049)

720004035, July 2011