

응용 자료

## Analysis of Ginseng Root Powder on an ACQUITY UPLC BEH Amide Column

---

Waters Corporation



This is an Application Brief and does not contain a detailed Experimental section.

---

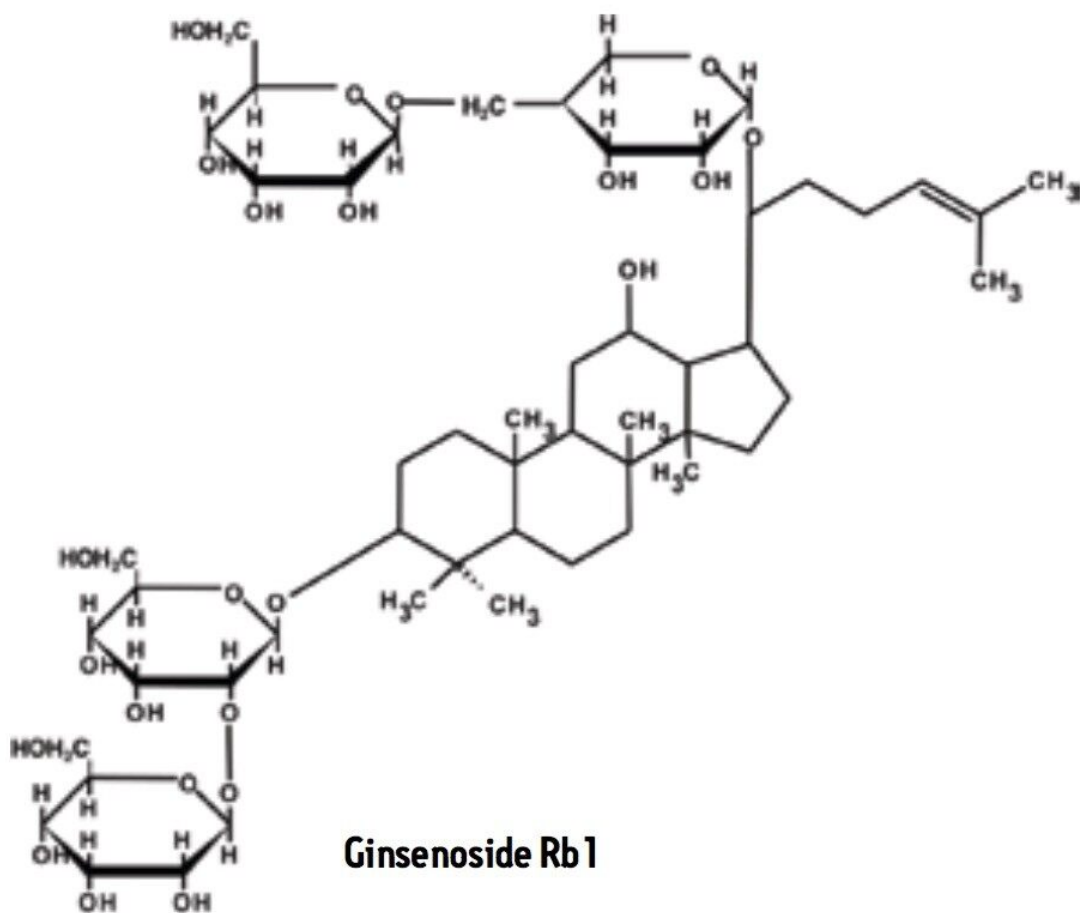
## Abstract

This application brief demonstrates analysis of ginseng root powder on an ACQUITY UPLC BEH Amide column.

---

## Introduction

### Compound



---

## Experimental

### UPLC Conditions

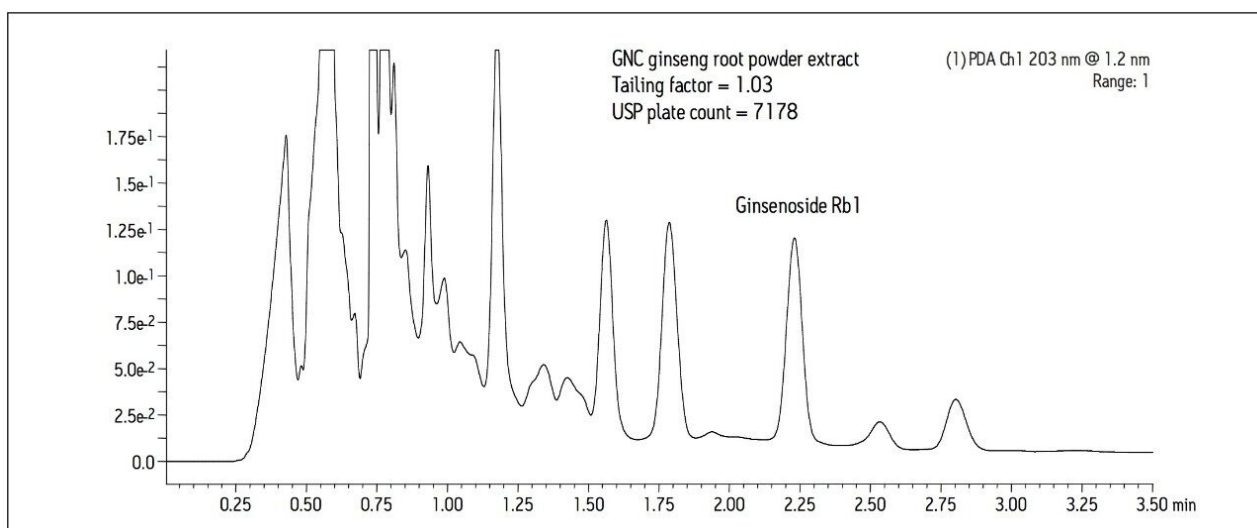
Column:	ACQUITY UPLC BEH Amide, 1.7 $\mu\text{m}$ , 2.1 x 150 mm
Part Number:	186004802
Mobile Phase:	80:20 MeCN:H <sub>2</sub> O
Isocratic Flow Rate:	0.6 mL/min
Column Temp.:	60 °C
Sample Temp.:	10 °C
Injection Vol.:	2.5 $\mu\text{L}$ ; PLNO on 10 $\mu\text{L}$ loop
Strong & Weak Needle Wash:	95:5 MeCN:H <sub>2</sub> O
Seal Wash:	10:90 MeOH:H <sub>2</sub> O
UV:	203 nm
Sampling Rate:	20 Hz
Filter Time Constant:	0.2 sec
Total Run Time:	3.5 min
Instrument:	ACQUITY UPLC with ACQUITY UPLC PDA

### Extraction Procedure

1. Add 1 mL 80% MeOH to 200 mg ginseng root powder and sonicate for 5 min.
2. Centrifuge for 5 min @ 10,000 rpm.
3. Keep supernatant and re-extract by repeating steps 2-4 two more times.
4. Pool all three extracts and mix well.
5. Filter through a 13 mm nylon 0.2  $\mu\text{m}$  filter prior to injection.

---

## Results and Discussion



---

## Featured Products

ACQUITY UPLC System <<https://www.waters.com/514207>>

ACQUITY UPLC PDA Detector <<https://www.waters.com/514225>>

WA64083, February 2010

©2019 Waters Corporation. All Rights Reserved.