

응용 자료

Analysis of Ginseng Root Powder on an XBridge HPLC Amide Column

Waters Corporation



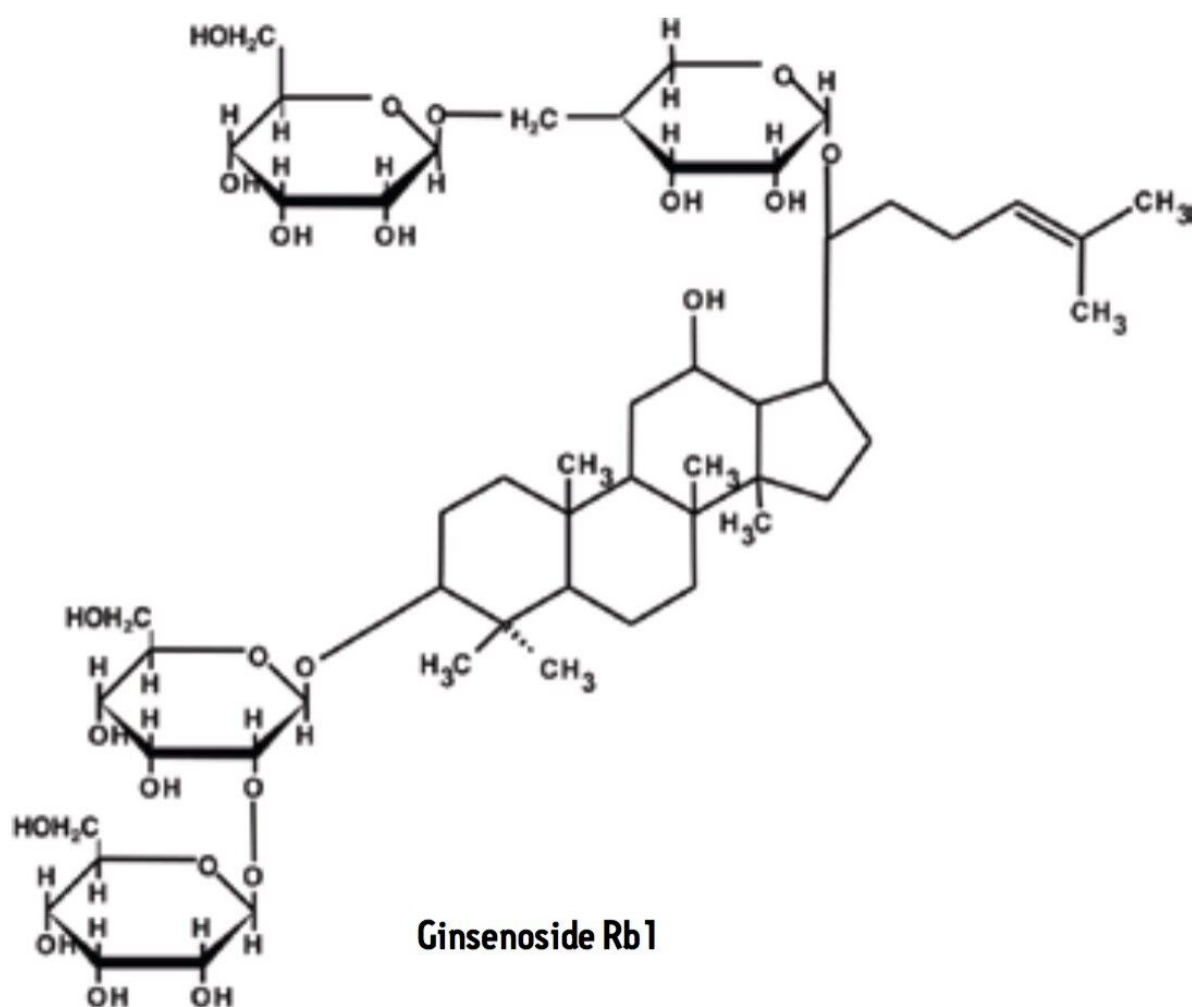
This is an Application Brief and does not contain a detailed Experimental section.

Abstract

This application brief demonstrates analysis of ginseng root powder on an XBridge HPLC Amide column.

Introduction

Compound



Experimental

HPLC Conditions

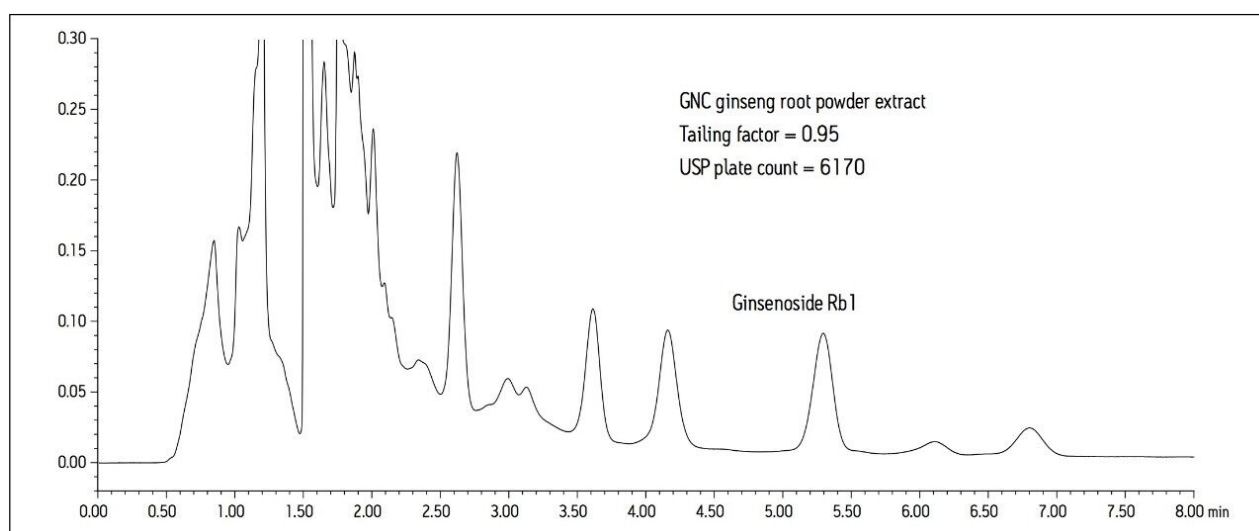
Column:	XBridge Amide, 3.5 μ m, 4.6 x 150 mm
Part Number:	186004869
Mobile Phase:	80:20 MeCN:H ₂ O
Isocratic Flow Rate:	1.4 mL/min
Column Temp.:	60 °C
Sample Temp.:	10 °C
Injection Vol.:	11.5 μ L
Needle Wash:	95:5 MeCN:H ₂ O
Seal Wash:	10:90 MeOH:H ₂ O
UV:	203 nm
Sampling Rate:	20 Hz
Filter Time Constant:	0.1 sec
Total Run Time:	8 min
Instrument:	Alliance 2695 and 2998 PDA

Extraction Procedure

1. Centrifuge for 5 min @ 10,000 rpm.
2. Keep supernatant and re-extract by repeating steps 2-4 two more times.

3. Pool all three extracts and mix well.
4. Filter through a 13 mm nylon 0.2 μm filter prior to injection.

Results and Discussion



Featured Products

Alliance HPLC System <<https://www.waters.com/534293>>

2998 Photodiode Array (PDA) Detector <<https://www.waters.com/1001362>>

WA64082, February 2010

©2019 Waters Corporation. All Rights Reserved.