

## Analysis of Ginseng Root Powder on an XBridge HPLC Amide Column

---

Waters Corporation



This is an Application Brief and does not contain a detailed Experimental section.

---

### Abstract

## Compound

## Experimental

## HPLC Conditions

Column:	XBridge Amide, 3.5 $\mu$ m, 4.6 x 150 mm
Part Number:	186004869
Mobile Phase:	80:20 MeCN:H <sub>2</sub> O
Isocratic Flow Rate:	1.4 mL/min
Column Temp.:	60 °C
Sample Temp.:	10 °C
Injection Vol.:	11.5 $\mu$ L
Needle Wash:	95:5 MeCN:H <sub>2</sub> O
Seal Wash:	10:90 MeOH:H <sub>2</sub> O
UV:	203 nm
Sampling Rate:	20 Hz
Filter Time Constant:	0.1 sec
Total Run Time:	8 min
Instrument:	Alliance 2695 and 2998 PDA

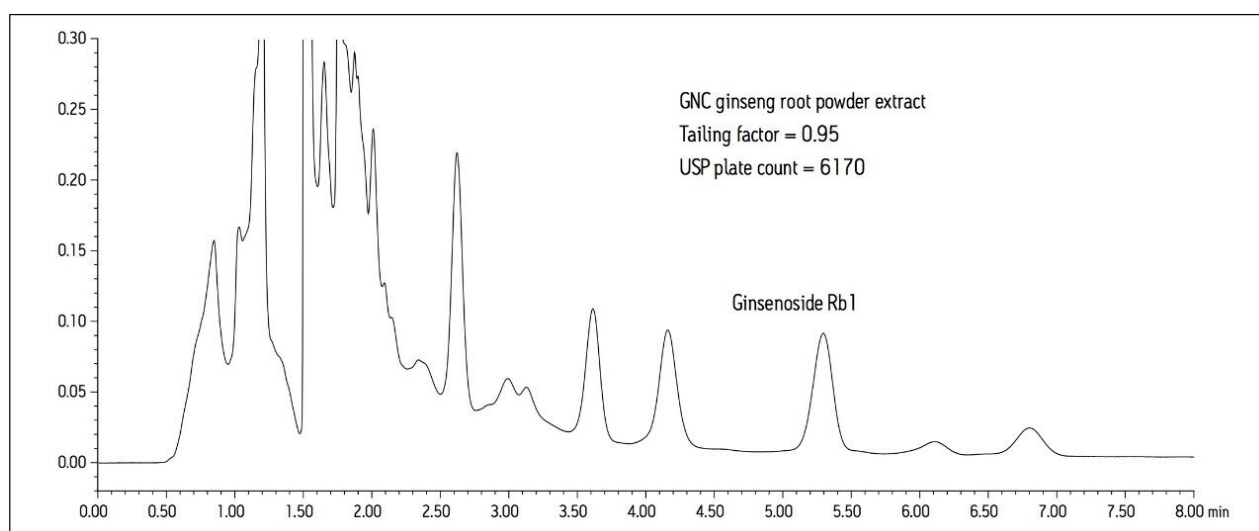
## Extraction Procedure

1. Centrifuge for 5 min @ 10,000 rpm.
2. Keep supernatant and re-extract by repeating steps 2-4 two more times.

3. Pool all three extracts and mix well.
4. Filter through a 13 mm nylon 0.2  $\mu$ m filter prior to injection.

---

## Results and Discussion



---

## Featured Products

Alliance HPLC System <<https://www.waters.com/534293>>

2998 Photodiode Array (PDA) Detector <<https://www.waters.com/1001362>>

WA64082, February 2010

©2019 Waters Corporation. All Rights Reserved.