

## Application Note

# A Case of Pesticide Poisoning: The Use of a Broad-Scope ToF Screening Approach in Wildlife Protection

---

George Keenan, Anna Giela, Michael Taylor, Jennifer Watson, Eleanor Riches, James Morphet, Paul Silcock, Peter Hancock, Hilary J. Major

Science & Advice for Scottish Agriculture (SASA), Waters Corporation



---

## Abstract

This application note describes the use of Waters ACQUITY UPLC coupled with Xevo G2 QTof, along with POSITIVE Software and the MassFragment tool, to screen samples from the gullet of a red kite carcass suspected of poisoning by pesticides, and to identify which pesticides were used.

## Benefits

We demonstrate the detection and identification of pesticide poisons ingested by a protected bird of prey.

---

## Introduction

As fragile ecosystems struggle to survive the impact of human domination of the environment, wildlife protection becomes increasingly important. While it is always preferable to safeguard living specimens in their native habitats, sadly, it is sometimes necessary to deal with the consequences of human interaction with vulnerable animals. Here we describe the use of a ToF screening approach in an incident of pesticide poisoning of a protected bird of prey.

The red kite (family: *accipitridae*, latin name: *milvus milvus*), shown in Figure 1, is a bird of prey that belongs to the same family as hawks, vultures, and eagles. This species has approximately 18,000 to 24,000 current breeding pairs in Europe, with around two thirds of this population found in Germany, and further significant populations in France and Spain. Up until the mid-19<sup>th</sup> century, red kites were persecuted extensively as vermin in the U.K.. The species was brought back from the brink of extinction by an on-going conservation effort. There are now just over 1,000 breeding pairs in the U.K., mainly located in central Wales, along the spine of central England and at various sites in Scotland.<sup>1, 2</sup>



*Figure 1. A red kite (milvus milvus) in flight.*

The red kite is primarily a scavenger that feeds on worms, small mammals, and carrion. Its feeding habits make it particularly susceptible to pesticide poisoning, either accidental – when it feeds on creatures that have previously been killed by pesticides; or intentional – when people spike pesticides into carrion, either to kill animals such as foxes and crows, or to target the birds themselves.

In the U.K., the red kite is protected under the Wildlife and Countryside Act of 1981, and, under Schedule 1, Part I, of this act, they are “protected by special penalties”.<sup>3</sup> The birds are afforded additional, wider protection in Scotland, as a result of the Nature Conservation (Scotland) Act of 2004.<sup>4</sup> If red kite carcasses are discovered by police or wildlife protection officers, and pesticide poisoning is suspected, they are often brought to SASA (Science and Advice for Scottish Agriculture – a division of the Scottish government). Here, samples are analyzed to identify the cause of death and, if necessary, the particular type or types of pesticide used.

This application note describes the use of Waters ACQUITY UPLC coupled with Xevo G2 QTof, along with POSITIVE Software and the MassFragment tool, to screen samples from the gullet of a red kite carcass suspected of poisoning by pesticides, and to identify which pesticides were used. We were able to demonstrate the unequivocal detection and identification of the pesticide poisons ingested by the red kite.

---

## Experimental

### LC conditions

LC system:	ACQUITY UPLC
Runtime:	5.00 min
Column:	ACQUITY BEH C <sub>18</sub> 1.7 µm, 2.1 x 50 mm
Column temp:	45°C
Mobile phase A:	10 mL of 1 M aqueous ammonium acetate solution and 990 mL water
Mobile phase B:	10 mL of 1 M aqueous ammonium acetate solution and 990 mL methanol
Flow rate:	0.6 mL/min
Injection volume:	3.0 µL

## MS conditions

MS system:	Xevo G2 QTof
Ionization mode:	ESI positive
Analyzer:	Resolution mode
Scan time:	0.1 s
Capillary voltage:	1.0 kV
Sampling cone:	30

Source temp;	120 °C
Desolvation temp:	550 °C
Desolvation gas:	1000 L/hr
Cone gas:	50 L/hr
Mass range:	50 to 1000 <i>m/z</i>

#### MS<sup>E</sup> conditions

Low energy:	6
High energy ramp:	25.0 – 35.0

#### LockSpray conditions

Compound:	Leucine enkephalin
Masses:	<i>m/z</i> 556.2771 and <i>m/z</i> 278.1141
Flow rate:	20 µL/min
Capillary voltage:	3.0 kV
Collision energy:	21

#### Sample preparation

The gullet contents were removed from the red kite carcass and 2.0 g were extracted into 5 mL of ethyl acetate.

A 1 mL aliquot was then solvent exchanged into methanol and made up to 400 mL, *i.e.* 0.4 g of gullet content extract in 400 mL.

This sample was passed through a 0.2 µm syringe filter with no further cleanup prior to analysis.

Mobile phase gradient is detailed in Table 1.

	Time (min)	Flow rate (mL/min)	%A	%B	Curve
1	Initial	0.60	98	2	0
2	0.10	0.60	98	2	6
3	3.75	0.60	1	99	6
4	4.25	0.60	1	99	6
5	4.26	0.60	98	2	11
6	5.00	0.60	98	2	6

Table 1. ACQUITY UPLC mobile phase gradient.

---

## Results and Discussion

The generic screening method given above was used to screen extracted gullet contents of the red kite for pesticide residues. The low energy MS<sup>E</sup> precursor ion total ion chromatogram (TIC) and the high energy MS<sup>E</sup> fragment ion TIC acquired from this screening analysis are shown in Figure 2.

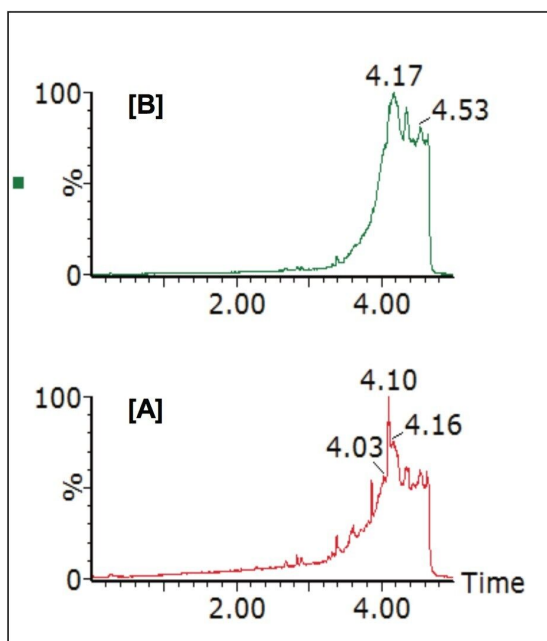


Figure 2. [A] Low energy  $MS^E$  TIC from broad-scope screening of red kite gullet contents; [B] High energy  $MS^E$  TIC from broad-scope screening of red kite gullet contents.

Matrix-matched standards were not available for the red kite sample; however, the sample data were processed using POSITIVE Software with pesticide solvent standards in order to provide identification and help assess the magnitude of the compounds that poisoned the red kite.

Figure 3 shows the ChromaLynx XS Identify results browser from POSITIVE data processing. Here, 585 compounds were targeted from which two were automatically found and identified as carbofuran and carbosulfan. Data for both the  $MS^E$  low energy precursor ions and the high energy fragment ions are displayed. The accuracy of the exact mass ions, as shown for carbosulfan (precursor ion:  $m/z$  381.2212, fragment ion:  $m/z$  118.0690) with  $\Delta M$  values of +0.2 mDa and -0.3 mDa respectively, provides added confidence that the results are correct.



Figure 3. ChromaLynx XS Identify results browser showing  $MS^E$  precursor and fragment ion data identifying carbofuran and carbosulfan as the potential pesticide poisons.

Figure 4 shows the TargetLynx Quantify Browser from POSITIVE data processing. Here pesticide solvent standards have been used to quantify the identified pesticide poisons.



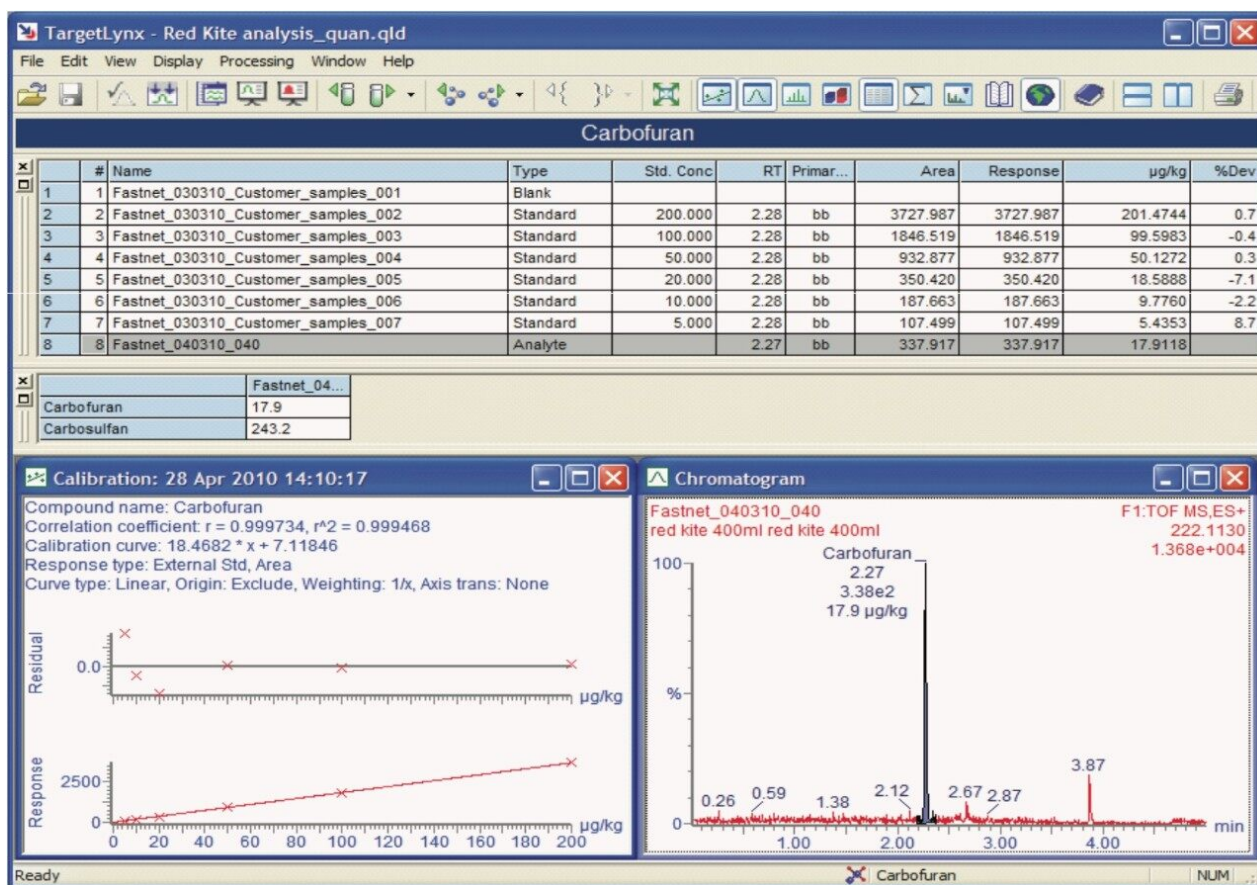


Figure 4. TargetLynx Quantify results browser showing carbofuran and carbosulfan quantified using pesticide solvent standard calibration curves.

Once the toxic compounds had potentially been identified as carbofuran and carbosulfan, additional metabolites of these two pesticides, previously identified in work by Soler, *et al.*<sup>5</sup>, were included in the targeted screening database, and the data were re-processed using POSITIVE Software. Figure 5 shows a section of the targeted compound database used, with the added metabolites and parent compounds highlighted.

Butylate	C11H23NO5	3.43		
Carbaryl	C12H10NO2NH4	2.13		
Carbendazim	C9H9N3O2	1.82		
Carbofuran	C12H15NO3	2.27		
Carbofuran-3-hydroxy	C12H14NO4	1.72		
Carbofuran-3-keto	C12H13NO4	1.98		
Carbofuran-3-hydroxy-7-phenol	C10H12O3			CarboFuran
Carbofuran-3-keto-7-phenol	C10H10O3			CarboFuran
Carbofuran-7-phenol	C10H12O2			CarboFuran
Carbosulfan	C20H32N2O3S	3.85		
Carboxin	C12H13NO2S	2.33		
Chlorbromuron	C9H10BrClN2O2	2.83		
Chlorfenvinphos	C12H14Cl3O4P	3.23		

Figure 5. A section of the targeted pesticide database with the key compounds highlighted.

Standards were not available for some of the metabolites of interest; however, POSITIVE provides the opportunity to identify a similar compound on the list for use as a standard from which to quantify. In Figure 5, 3-hydroxy-7-phenolcarbofuran, 3-keto-7-phenolcarbofuran, and 7-phenolcarbofuran, if present in the sample, would each be quantified using the calibration curve for carbofuran.

After re-processing, the metabolite 7-phenolcarbofuran was also identified and quantified using the solvent calibration curve for carbofuran, as shown in Figure 6.

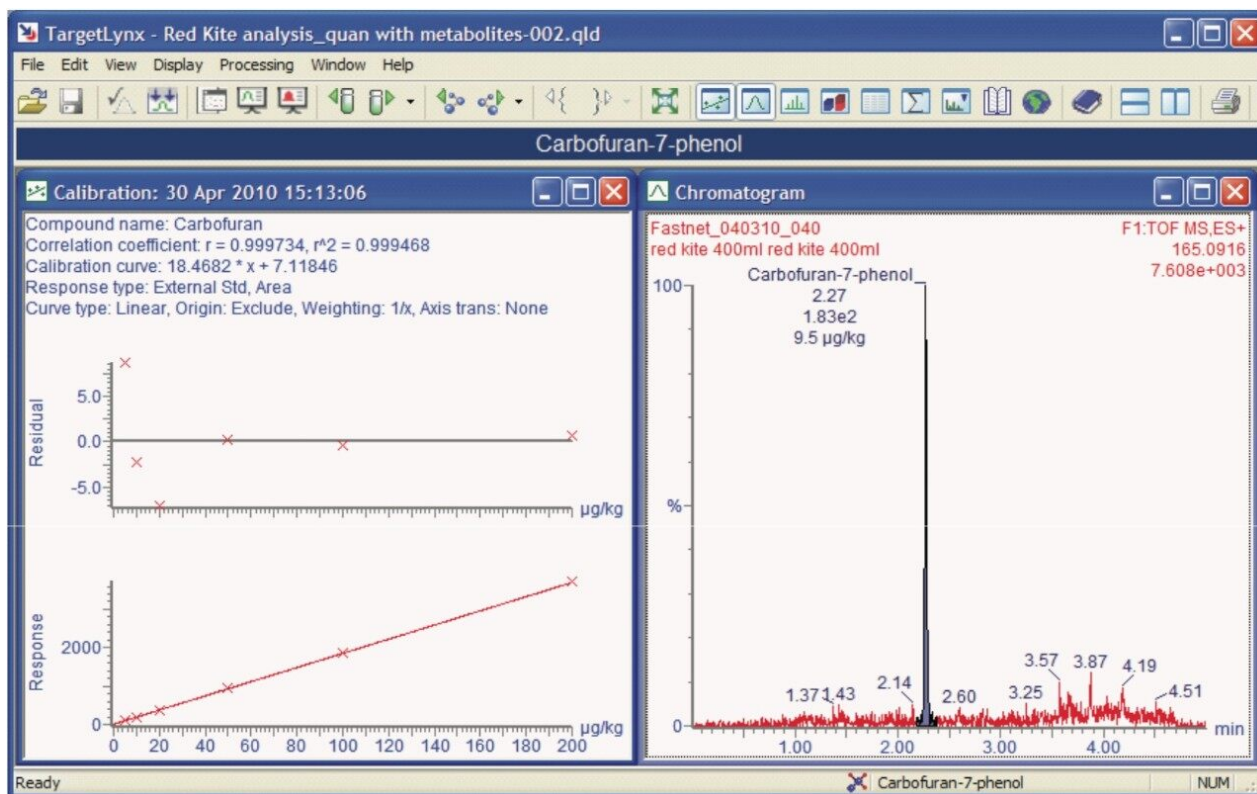
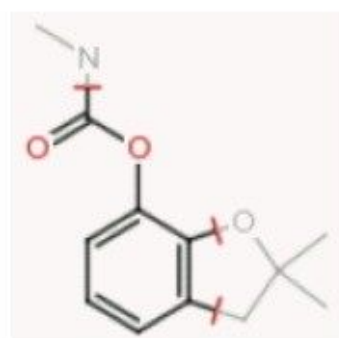
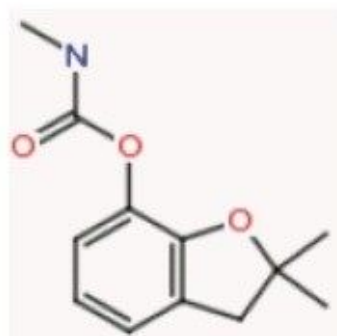


Figure 6. The metabolite 7-phenolcarbofuran was also identified and quantified using the calibration curve for carbofuran.

Further compound confirmation was carried out using the MassFragment tool. Structures were assigned to the  $\text{MS}^E$  fragment ion spectra acquired from the relevant extracted ion chromatograms (XIC), based on accurate and precise exact mass data. Figure 7 shows MassFragment-assigned structures for the fragment ions seen at 2.27 min, and Figure 8 shows similar information for the fragment ions acquired at 3.87 min.



$\Delta M: 0.0$  mDa  
123.0446



$\Delta M: +0.4$  mDa  
222.1134

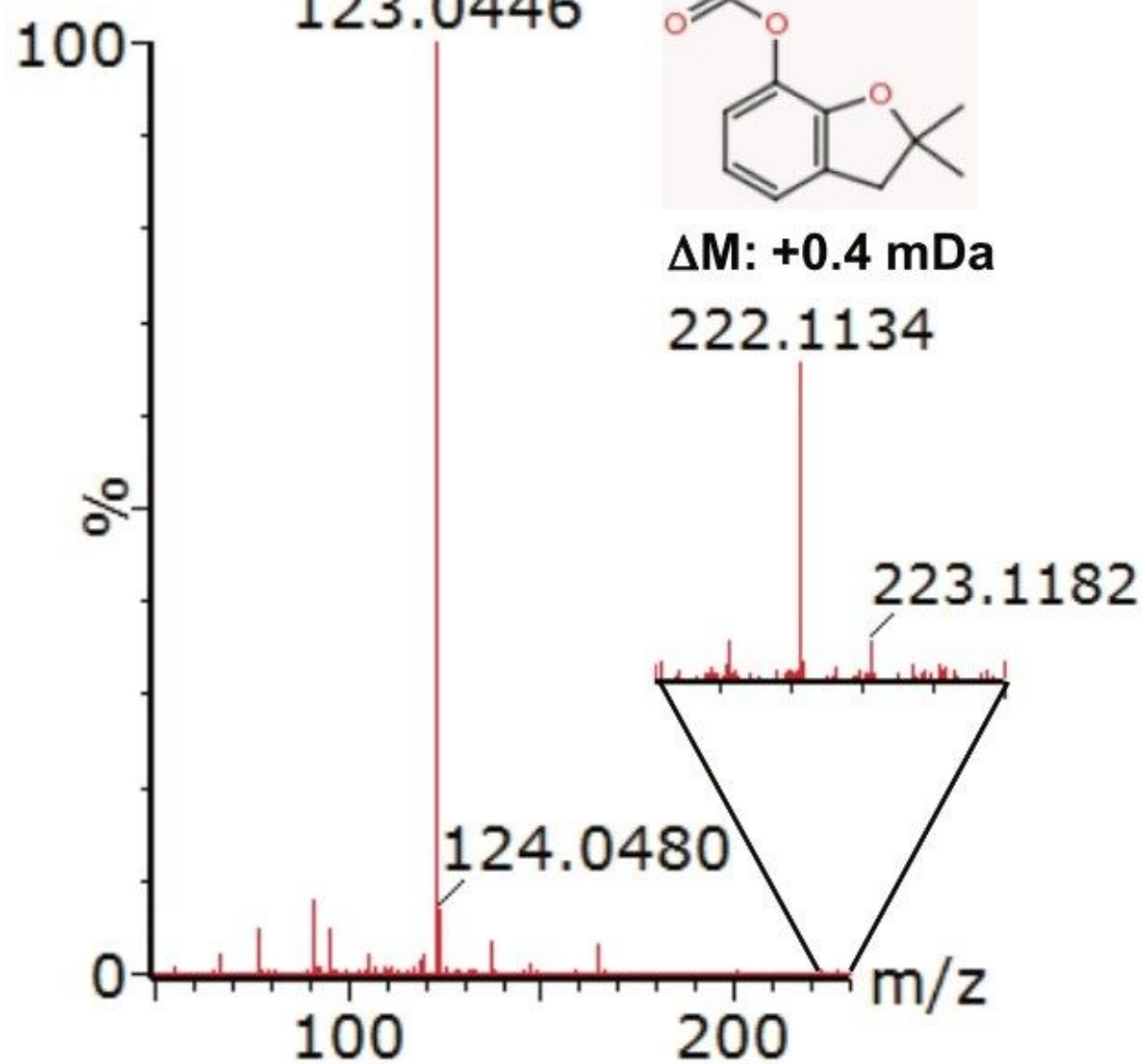


Figure 7.  $MS^E$  high energy fragment ion spectrum showing mass accuracy for carbofuran precursor ion and primary fragment ion at 2.37 min, with structural assignments from MassFragment.

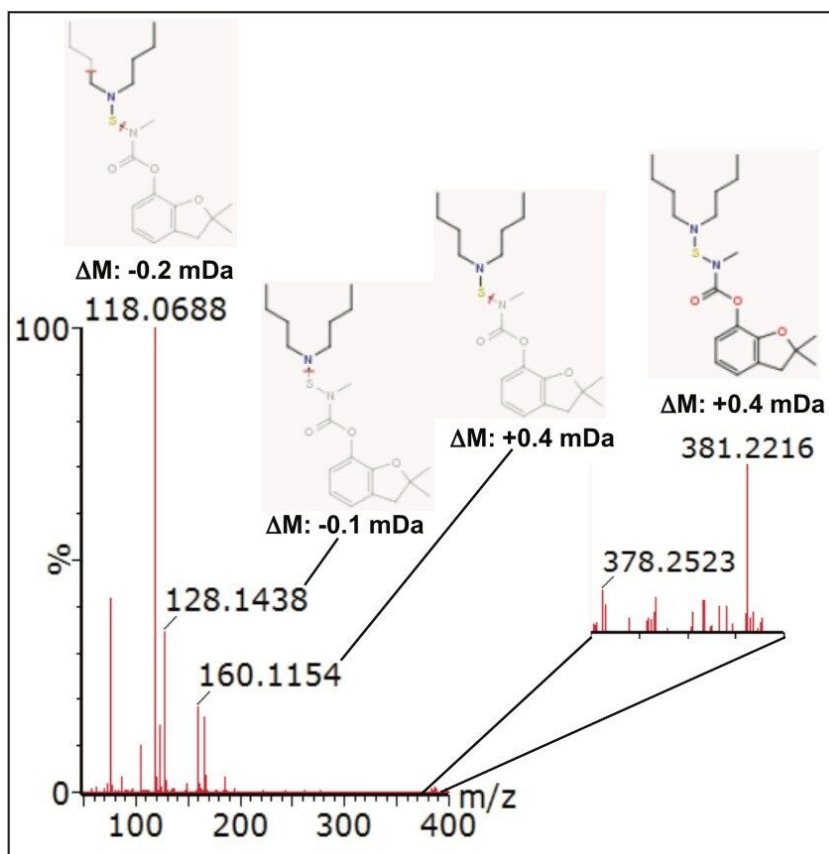


Figure 8.  $MS^E$  high-energy fragment ion spectrum showing mass accuracy for carbosulfan precursor ion and primary fragment ions at 3.87 min, with structural assignments from MassFragment.

## Conclusion

- Broad-scope pesticide screening of the extracted red kite gullet samples enabled the detection and identification of the pesticides that poisoned the bird of prey. Carbosulfan and carbofuran were identified, with a high degree of confidence, as the pesticides used in this poisoning case.

- The MS<sup>E</sup> functionality of Xevo G2 QTof enables the acquisition of both low energy (precursor ion) and high energy (fragment ion) data in one rapid screening run.
- The highly reproducible and precise exact mass data affords increased confidence in the accuracy of the results.
- POSITIVE Software, along with the MassFragment tool, provide a powerful data processing approach for pesticide screening and unequivocal compound identification.

---

## References

1. Website: <http://www.redkites.co.uk/>
2. Website: <http://www.rspb.org.uk/wildlife/birdguide/name/r/redkite/index.aspx>
3. Website: <http://www.jncc.gov.uk/page-3614>
4. Website: [http://www.opsi.gov.uk/legislation/scotland/acts2004/asp\\_20040006\\_en\\_1](http://www.opsi.gov.uk/legislation/scotland/acts2004/asp_20040006_en_1)
5. Soler C, Hamilton B, Furey A, James KJ, Manes J, and Pico Y. Liquid Chromatography Quadrupole Time-of-Flight Mass Spectrometry Analysis of Carbosulfan, Carbofuran, 3-Hydroxycarbofuran and Other Metabolites in Food. *Analytical Chemistry*, 2007; 79: 1492-1501.

## Acknowledgements

With thanks to SASA for providing extracted samples and pesticide standards.

---

## Featured Products

ACQUITY UPLC System <<https://www.waters.com/514207>>

MassFragment <<https://www.waters.com/1000943>>

POSITIVE <<https://www.waters.com/10145280>>

ChromaLynx <<https://www.waters.com/513759>>

LockSpray Exact Mass Ionization Source <<https://www.waters.com/1000396>>

720003470, May 2010

©2019 Waters Corporation. All Rights Reserved.