

Nota de aplicación

HSS HPLC Columns: An Additional Option for Transferring Methods Between HPLC and UPLC Technology

Zhe Yin, Kenneth J. Fountain, Douglas R. McCabe, Diane M. Diehl, Damian Morrison

Waters Corporation



Abstract

In this application note, some principles of transferring methods between UPLC and HPLC systems are illustrated. In particular, calculations required to move a method from a UPLC to an HPLC platform are presented.

Introduction

Over the past 5 years, UPLC Technology has been widely adopted by analytical laboratories due to the benefits of increased sample throughput, better separation efficiency, and improved data quality over traditional HPLC. As these laboratories replace their existing HPLC systems with UPLC systems, there is a transition period where a method must be run on both platforms. Thus, having the same particle substrate and bonded phases available in HPLC and UPLC particle sizes can significantly ease the burden of method development and transfer from one platform to another.

In addition to the ethylene bridged hybrid (BEH) particles, three new high strength silica (HSS) substrate stationary phases for HPLC-have been introduced. In this application note, some principles of transferring methods between UPLC and HPLC systems are illustrated. In particular, calculations required to move a method from a UPLC to an HPLC platform are presented.

Experimental

Method Conditions

Systems:

UPLC - ACQUITY UPLC and PDA

HPLC - Alliance 2695 and 2998 PDA

Column Chemistries:

ACQUITY UPLC HSS C₁₈

ACQUITY UPLC HSS C₁₈ SB

ACQUITY UPLC HSS T3

Column Dimensions:	UPLC - 2.1 x 50 mm, 1.8 µm HPLC - 4.6 x 100 mm, 3.5 µm HPLC - 4.6 x 150 mm, 5 µm Semi-prep - 10 x 50 mm, 5 µm
Mobile Phase A:	0.1% TFA in water
Mobile Phase B:	0.1% TFA in acetonitrile
Sampling Rate:	UPLC - 20 Hz HPLC - 5 Hz
Time Constant:	UPLC - 0.1 s HPLC - 0.4 s

All conditions for Figure 1 are listed in the figure caption. For Figures 2 through 5, the gradient, flow rate, injection volume, column temperature, and detection wavelength are indicated within each figure.

UPLC to HPLC Transfer Calculations

Scaling the injection volume

$$\text{Vol}_2 = \text{Vol}_1 \times \frac{D_2^2}{D_1^2} \times \frac{L_2}{L_1}$$

Where Vol is the injection volume (µL), D is the column inner diameter (mm), and L is the column length (mm). For example, a 2.1 µL injection on a 2.1 x 50 mm UPLC column is equivalent to a 30 µL injection on a 4.6 x 150 mm HPLC column.

Scaling the flow rate

$$F_2 = F_1 \times \frac{D_2^2}{D_1^2} \times \frac{d_{p1}}{d_{p2}}$$

Where F is the flow rate (mL/min) and dp is the particle size (µm). For example, a 0.6 mL/min flow rate on a 2.1 mm i.d., 1.8 µm column corresponds to a flow rate of 1.04 mL/min on a 4.6 mm i.d., 5.0 µm column.

Calculating the gradient offset time

The dwell volume difference between the ACQUITY UPLC System and HPLC systems will result in retention time shifts when transferring from UPLC to HPLC. In order to achieve proper transfer results, this difference in dwell volume must be compensated for by introducing an initial hold time at the start of the HPLC gradient. The detailed procedure for determining system volume has been explained previously [1]. The dwell volume must be calculated as the number of column volumes (c.v.).

Dwell Volume of UPLC System:

Measured system volume = 0.11 mL (5 µL sample loop)

Volume of a 2.1 x 50 mm UPLC column (c.v.) = 0.173 mL

Dwell volume = 0.11 mL / 0.173 mL = 0.636 c.v.

The ACQUITY UPLC system has a dwell volume of 0.636 c.v.

Dwell Volume of HPLC System:

Measured system volume = 0.80 mL (100 µL sample loop)

Volume of a 4.6 x 150 mm HPLC column = 2.49 mL

Dwell volume = 0.80 mL / 2.49 mL = 0.321 c.v.

The Alliance HPLC system has a dwell volume of 0.321 c.v.

Dwell Volume Difference:

The difference in dwell volume between the UPLC and HPLC systems = 0.636 c.v. - 0.321 c.v. = 0.315 c.v.

Therefore, the initial hold volume will be: 0.315 c.v. x 2.49 mL (c.v. of the HPLC column) = 0.784 mL

Calculating Initial Hold Time:

Hold time = initial hold volume (mL)/flow rate (mL/min) = 0.784 mL/1.04 mL/min = 0.76 min

Calculating the Gradient Table

In addition to calculating the initial hold time, the number of column volumes must remain constant for each gradient segment to properly transfer from UPLC to HPLC.

The number of column volumes (# c.v.) = [Segment time (min) x flow rate (mL/min)]/column volume (mL).

In Table 1, # c.v. for the 1st gradient segment (2nd row) is calculated as: [2.0 min x 0.6 mL/min]/0.173 mL = 6.94 c.v.

Time (min)	Flow Rate (mL/min)	%A	%B	Time Segment	# c.v.
0.00	0.6	98	2	0.00	0.00
2.00	0.6	50	50	2.00	6.94
2.01	0.6	98	2	0.01	0.03
2.50	0.6	98	2	0.49	1.70

Table 1. UPLC gradient table (1.8 μ m, 2.1 x 50 mm).

The # of column volumes (e.g., 6.94 c.v. in Table 1) must be maintained to preserve the separation profile in HPLC.

Segment time (min) = [# c.v. x column volume (mL)]/flow rate (mL/min) = 6.94 x 2.49 mL / 1.04 mL/min = 16.7 min, as show in Table 2.

By following the same calculations for all of the gradient segments and adding the initial hold time, the gradient table for HPLC can be completed (Table 2).

Time (min)	Flow Rate (mL/min)	%A	%B	Time Segment	# c.v.
00.00	1.04	98	2	00.00	0.00
00.76	1.04	98	2	00.76	0.00
17.42	1.04	50	50	16.70	6.94
17.51	1.04	98	2	00.09	0.03
21.59	1.04	98	2	04.08	1.70

Table 2. HPLC gradient table (5.0 μ m, 4.6 x 150 mm).

Results and Discussion

Selectivity Comparison

The HSS family of columns include a general purpose C₁₈ (HSS C₁₈), a non-end-capped C₁₈ column designed to give different selectivity for basic compounds (HSS C₁₈ SB), and a column designed to retain polar compounds and operate in 100% aqueous conditions (HSS T3). Figure 1 shows the selectivity difference between these 3 columns for a mixture of basic drugs.

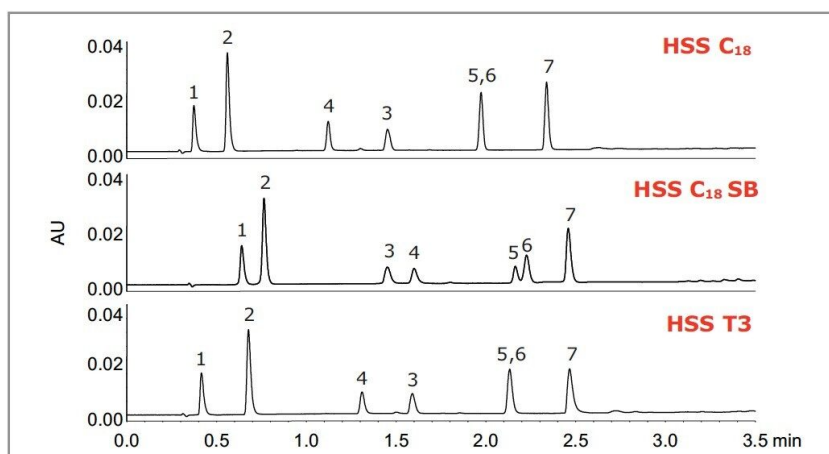


Figure 1. Separation of basic drugs compared on three HSS chemistries.

Mobile phase A: 10 mM NH_4COOH in H_2O , pH 3.0, mobile phase B:

MeOH. Gradient from 30%-85% B in 3 min, hold for 0.5 min, reset (4.5 min total time). The flow rate was 0.4 mL/min, the column temperature was 30 °C. UV detection at 260 nm. The column dimensions and particle size were 2.1 x 50 mm, 1.8 μm . Peaks: (1) Aminopyrazine, (2) Pindolol, (3) Labetalol, (4) Quinine, (5) Verapamil, (6) Diltiazem, and (7) Amitriptyline.

Method transfer between different particle sizes

The columns used for method transfer were chosen based on their ratio of column length to particle size (L/d_p), which is a measure of resolving power. In order to maintain the same resolution during method transfer between UPLC and HPLC, the following columns were used:

UPLC: 50 mm / 1.8 μm ($L/d_p = 27,777$)

HPLC: 100 mm / 3.5 μm ($L/d_p = 28,571$)

HPLC: 150 mm / 5.0 μm ($L/d_p = 30,000$)

The following section shows the transfer of three different UPLC methods to HPLC using the formulas described in the Experimental section. The use of each HSS chemistry is highlighted to demonstrate consistent selectivity and resolution between UPLC and HPLC.

Glimepiride, the active pharmaceutical ingredient (API) in Amaryl (used for treating diabetes), was degraded and then analyzed by UPLC on an ACQUITY UPLC HSS C_{18} Column. The UPLC method (including injection volume, flow rate and gradient condition) was then properly transferred to the HPLC system on an HSS C_{18} Column. Selectivity, UV response, and the degradation profile are consistent between the UPLC and HPLC

chromatograms.

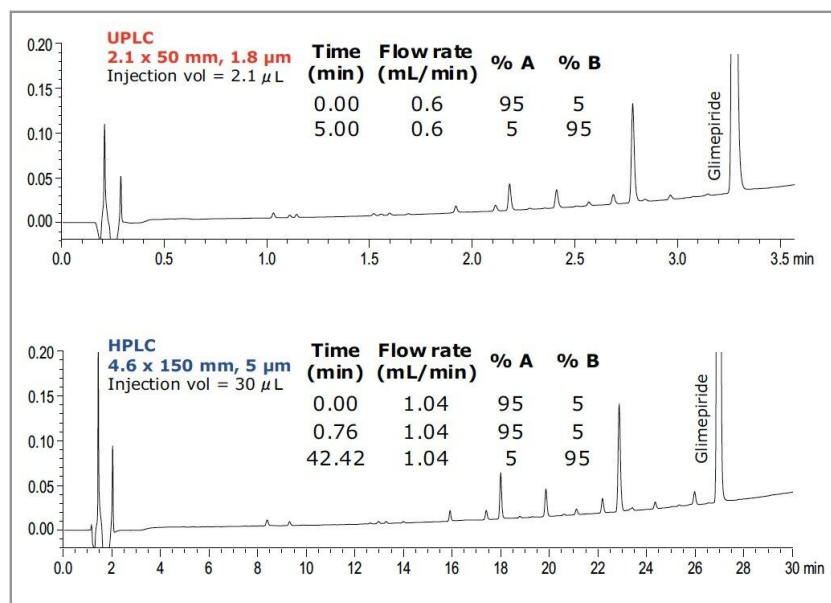
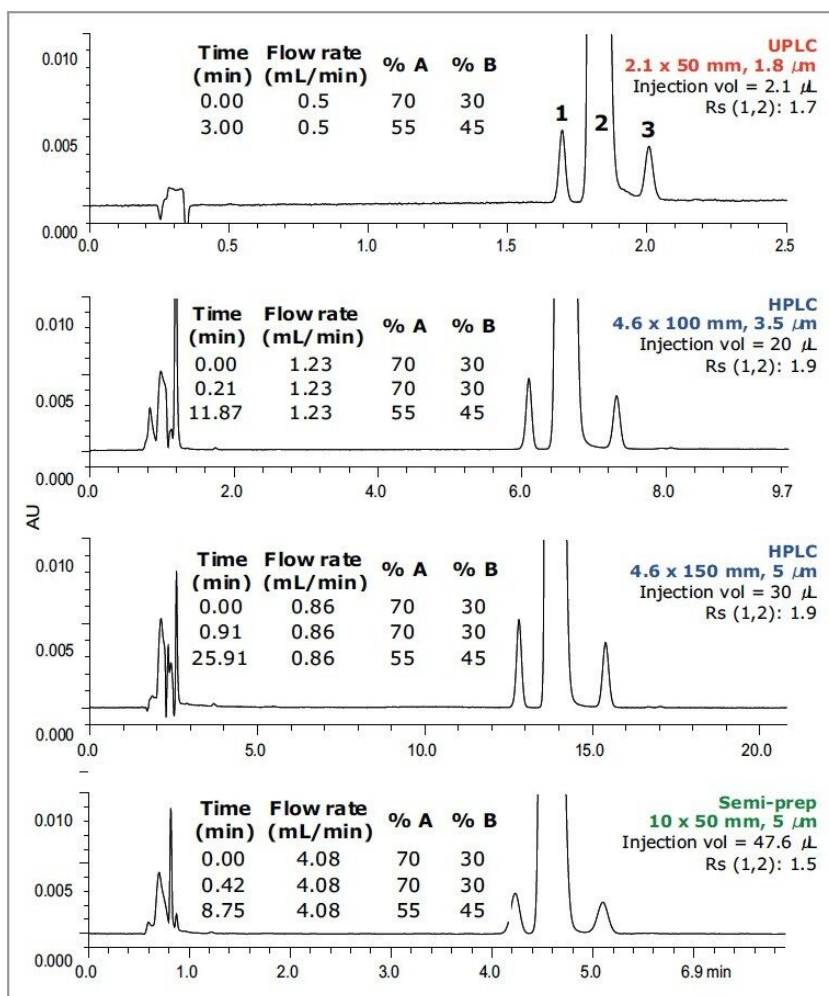
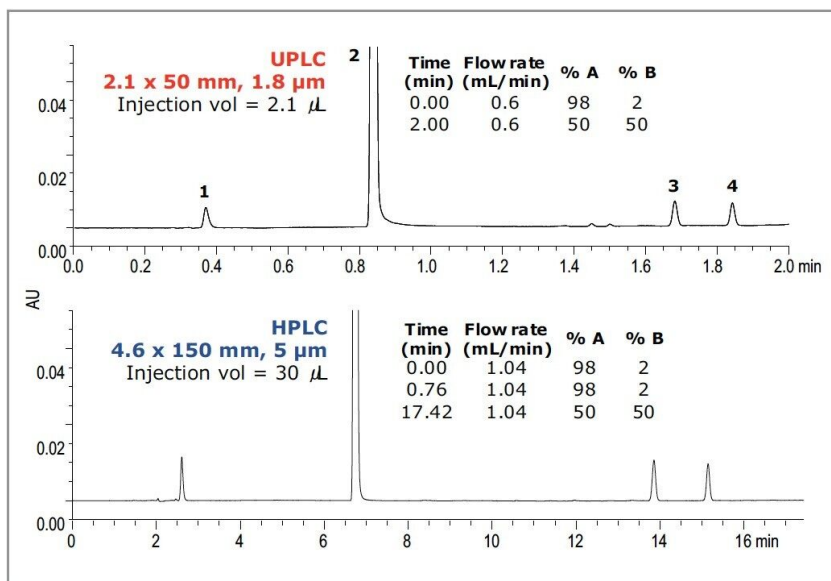


Figure 2. Scaled separation of a glimepiride degradation sample on HSS C₁₈. Column temperature was 40 °C. UV detection at 230 nm.

Figure 3 shows the separation profile for paroxetine and two related compounds (i.e., impurities/degradants). Paroxetine is the API in Paxil, which is used for treating depression. The separation was developed on an ACQUITY UPLC System using an ACQUITY UPLC HSS C₁₈ SB Column, and then transferred to HPLC and semi-prep dimensions. Resolution and selectivity were maintained across all columns, proving that separations on HSS packings can be easily transferred between UPLC, analytical and preparative HPLC columns. The resolution on the 10 x 50 mm, 5 μm preparative column is slightly less than for the UPLC and HPLC separations because the L/dp ratio was lowered. This was done to shorten the preparative HPLC run time.



The last example shown in Figure 4 is acetaminophen, the API in Tylenol. Acetaminophen was separated from 3 of its impurities on an ACQUITY UPLC HSS T3 Column using an ACQUITY UPLC System. The UPLC method was then readily transferred to an HPLC system with an HPLC HSS T3 Column. Selectivity and resolution are comparable between the UPLC and HPLC analyses.



Method transfer between different column diameters

Transferring methods from one column diameter to another is also important, mostly for saving solvent and decreasing mobile phase waste disposal costs. A smaller column diameter increases sensitivity and is a better option when sample volume is limited. Figure 5 shows how the forced degradation analysis for glimepiride, shown in Figure 2, may be readily scaled to three HSS C₁₈ columns with different column diameters. Changing the column diameter requires only an adjustment in the injection volume and flow rate, while the gradient remains the same. Using the same particle size, the separation transfers seamlessly from one column diameter to another without a loss in resolution or change in selectivity. Also note that, at the lower flow rate and column volume, 5 times less mobile phase and sample is consumed on the 2.1-mm i.d. column when compared to the 4.6-mm i.d. column. Using the same particle and surface chemistry in a smaller diameter column significantly reduces the cost of analysis without sacrificing data quality.

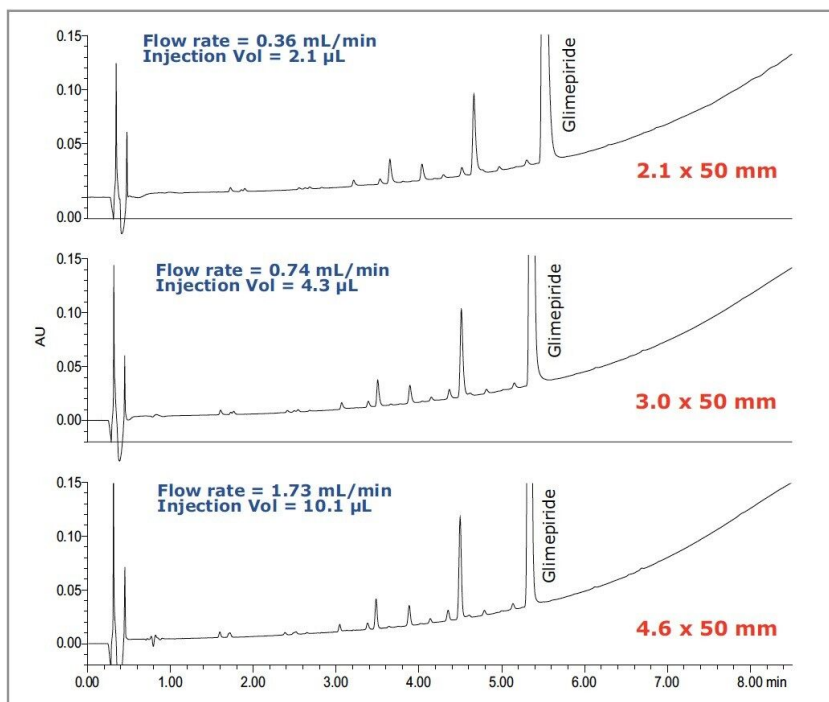


Figure 5. Scaled separation of a glimepiride degradation sample on 3.5 μm HSS C_{18} . The gradient was from 5-95% B in 8.5 min. Column temperature was 40 $^{\circ}\text{C}$. UV detection at 230 nm.

Conclusion

A successful method transfer from UPLC to HPLC requires careful consideration of key parameters, including system volume, column dimensions, particle size, injection volume, flow rate, and gradient profile. Using the concepts and calculations presented in this application note, methods can be easily transferred between different systems (UPLC- HPLC- Prep HPLC, or vice versa), particle sizes, and column diameters using the new HSS columns.

References

1. Jablonski, J.M., Wheat, T.E., Diehl, D.M. Developing Focused Gradients for Isolation and Purification.

Waters application note. Literature [720002955EN](#) <

<https://www.waters.com/webassets/cms/library/docs/720002955en.pdf>> .

2. Diehl, D.M., Xia F., Cavanaugh, J.Y., Fountain K.J., Jablonski, J.M., Wheat, T.E. Method Migration from UPLC Technology to Preparative HPLC. Waters application note. Literature [720002375EN](#) <

<https://www.waters.com/webassets/cms/library/docs/720002375en.pdf>> .

Featured Products

Alliance HPLC System <<https://www.waters.com/534293>>

ACQUITY UPLC System <<https://www.waters.com/514207>>

ACQUITY UPLC PDA Detector <<https://www.waters.com/514225>>

2998 Photodiode Array (PDA) Detector <<https://www.waters.com/1001362>>

720003233, October 2009