

Developing Focused Gradients for Isolation and Purification

Jo-Ann M. Jablonski, Thomas E. Wheat, Diane M. Diehl

Waters Corporation



Abstract

Focused gradients improve the resolution between closely eluting peaks without increasing chromatographic run time. Improved resolution leads to product with higher purity and increased yield.

Benefits

- Chromatographic separations for isolation and purification
 - Focused gradients improve the resolution between closely eluting peaks without increasing chromatographic run time
 - Higher purity
 - Increased yield
-

Introduction

Chromatographic separations for isolation and purification are governed by the same physical and chemical principles as analytical separations. In prep experiments, however, scientists isolate compounds at high mass loads, often on large columns, and require better resolution to enhance purity and recovery of the collected materials. Although creating a shallower gradient is a good first approach to enhancing resolution, changing the gradient slope for the whole separation leads to broader peaks and an increase in total run time. Focused gradients, an alternative to universally shallower gradients, decrease the gradient slope for only that portion of the chromatogram that needs increased resolution, providing more resolution between closely eluting peaks without increasing the total run time. A focused gradient can be defined based on a scouting run or directly from a first prep run.

Experimental

Steps for gradient development:

- Determine system volume for prep scale
- Run scouting gradient
- Design focused gradient

- Run the focused gradient on the large scale column

Instrumentation

LC system:	Waters 2525 Binary Gradient Module, 2767 Sample Manager, Column Fluidics Organizer, 2996 Photodiode Array Detector, AutoPurification Flow Cell
Column:	XBridge Prep OBD C ₁₈ Column 19 x 50 mm, 5 µm (Part Number 186002977)
Flow rate:	25 mL/min
Mobile phase A:	0.1% Formic acid in water
Mobile phase B:	0.1% Formic acid in acetonitrile
Wavelength:	260 nm

Sample mixture

- Sulfanilamide, 10 mg/mL
- Sulfathiazole, 10 mg/mL
- Sulfamethazine, 20 mg/mL*
- Sulfamethizole, 10 mg/mL
- Sulfamethoxazole, 10 mg/mL
- Sulfisoxazole, 4 mg/mL
- Total concentration, 64 mg/mL in DMSO

**Peak selected for focused gradient.*

Results and Discussion

Determine system volume for prep scale

- Remove column and replace with a union.
- Use Acetonitrile as A, and Acetonitrile with 0.05 mg/mL uracil as B (eliminates non-additive mixing and viscosity problems).
- Monitor 254 nm.
- Collect 100% A baseline for 5 min.
- At 5.01 min, program a step to 100% B, and collect data for an additional 5 min.
- Measure absorbance difference between 100% A and 100% B.
- Measure time at 50% of that absorbance difference.
- Calculate time difference between start of step (5.01 min) and 50% point.
- Multiply time difference by flow rate.

The system volume is defined as the volume from the point of gradient formation to the head of the column. The system volume is used in designing the focused gradient. As shown in Figure 1, the system volume for the instrument configuration used in this experiment is 3.0 mL.

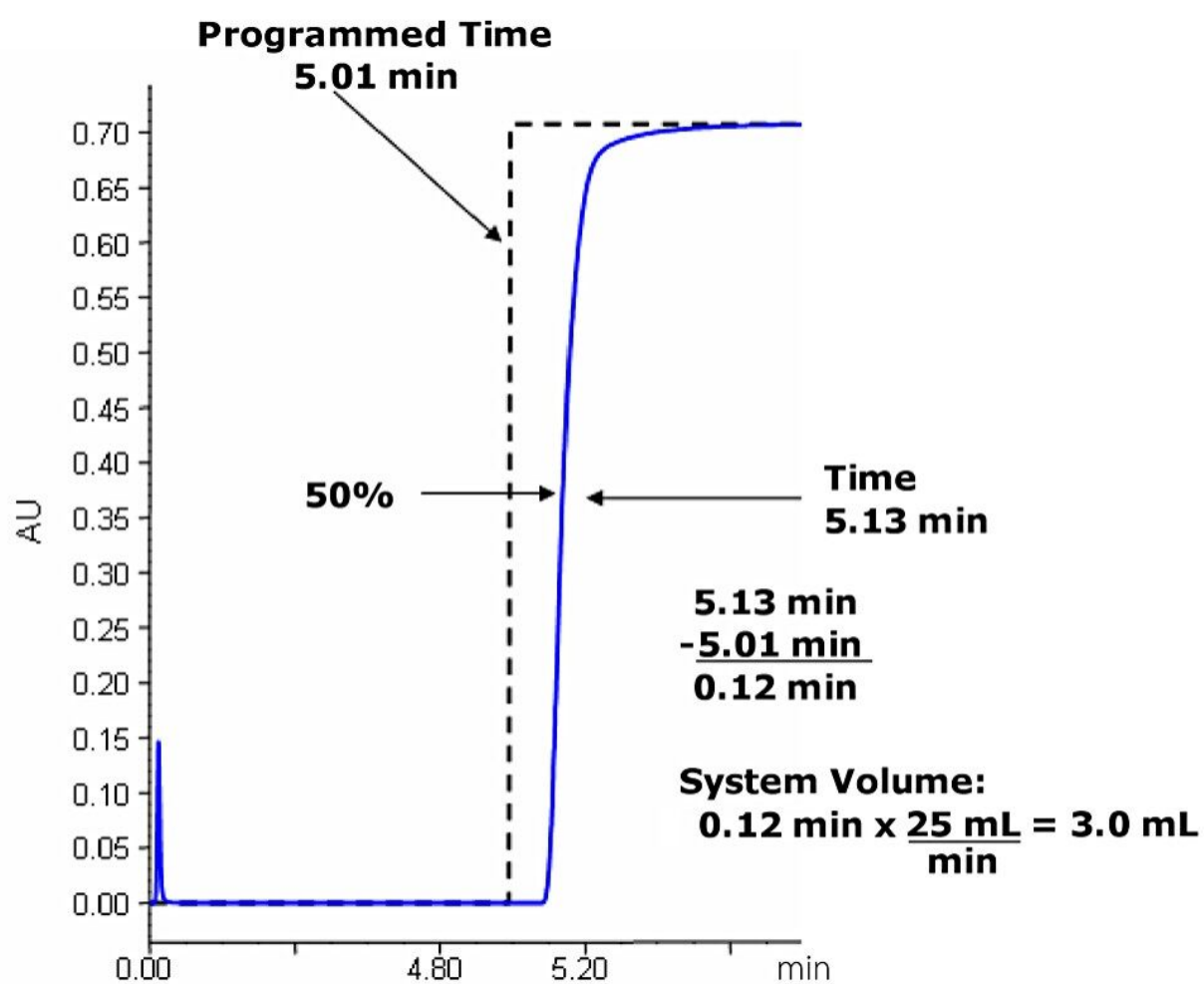


Figure 1. System volume determination.

Run scouting gradient on sample

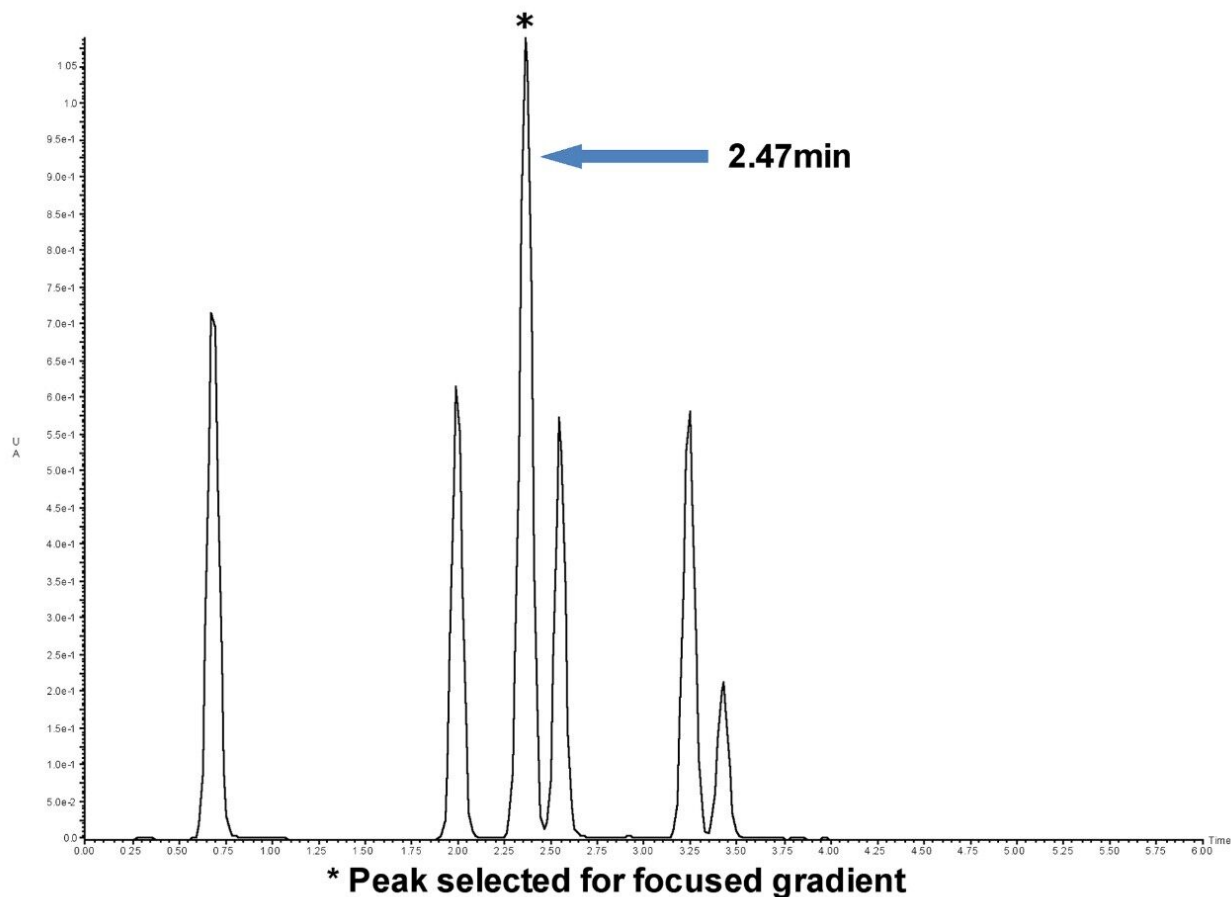


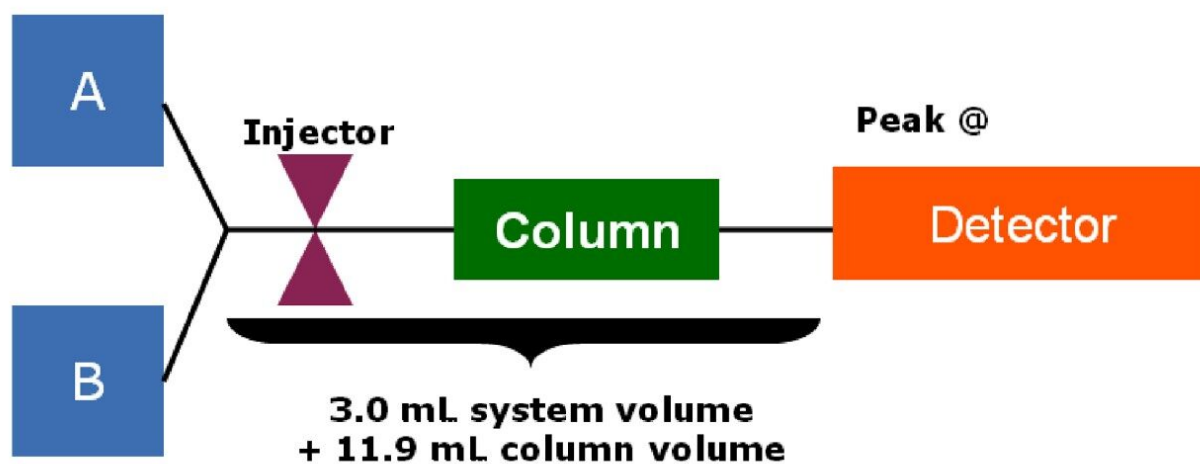
Figure 2. Large scale chromatogram of six compound sample mixture. Chromatographic method has a 0.39 min hold at the initial condition. The gradient is from 5-50% B in 5 minutes.

Designing the focused gradient

Step 1

The solvent concentration that elutes peak 3 at 2.47 minutes was formed at an earlier time. As shown in Figure 3, the offset between the detector and the point of gradient formation is equal to the system volume plus the column volume. The offset, then, for this particular system is equal to the 3 mL system volume determined earlier plus the volume of the 19 x 50 mm prep column (11.9 mL), or 14.9 mL. At a flow rate of 25 mL/min, it takes 0.59 minutes for the solvent concentration to reach the detector. The elution time of 2.47 minutes minus the offset time of 0.59 minutes is 1.88 minutes. Since the initial large scale gradient has a hold of 0.39 minutes, the time when the percentage of acetonitrile that elutes the peak was formed at 1.88 minutes

minus 0.39 minutes, or 1.49 minutes into the 5 minute gradient.



The solvent concentration that eluted the peak @ 2.47min was formed at an earlier time:

Offset between the detector and the point of gradient formation = system volume + column volume

Therefore, Offset = 3.0 mL + 11.9 mL = 14.9mL

$$\frac{14.9 \text{ mL}}{25 \text{ mL/min}} = 0.59 \text{ min}$$

The solvent that eluted the peak @ 2.47 min was formed @ 1.49 min
 2.47 min – 0.59 min = 1.88 min – 0.39 min hold = 1.49 min

Figure 3. System diagram with offset calculations.

Designing the focused gradient

Step 2

Calculate the percentage of acetonitrile that elutes the peak at 2.47 minutes. The original large scale gradient goes from 5-50% B in 5 minutes with an initial hold of 0.39 minutes.

45%

5 min = 9% per min

AND

9% x 1.49 min = 13.4% acetonitrile

min

Another way to calculate the percentage of acetonitrile:

$1.49 \text{ min} \times 45\% = 13.4\% \text{ acetonitrile}$

5.00 min

The percentage of acetonitrile calculated from the gradient that elutes the peak at 2.47 minutes is 13.4%; because the gradient starts at 5% acetonitrile, the actual concentration of acetonitrile that elutes the peak is $13.4\% + 5\%$, or 18.4% acetonitrile.

Designing the focused gradient

Step 3

A focused gradient intended to separate closely eluting peaks in the middle of the gradient should start at the original small pilot scale conditions, usually 0-5% B. Once the sample injection occurs, quickly ramp the gradient to the percentage of acetonitrile that is 5% below the expected percent acetonitrile concentration that will elute the peak of interest. Make the shallow, focused portion of the gradient proceed at one-fifth of the slope that was used in the scouting gradient. A five-fold shallower gradient can be expected to give better resolution between closely eluting peaks. End the focused portion of the gradient 5% above the expected percent acetonitrile concentration that will elute the peak of interest. The original gradient goes from 5-50% B in 5 minutes, or 45% change in 5 minutes. This is a 9% change per minute in acetonitrile concentration (round the 9% to 10% to simplify). The new gradient slope should then be one-fifth of 10%, or 2% change per minute. A 2% change per minute for a 10% change in acetonitrile concentration means that the focused gradient time segment for separating peaks 3 and 4 should have a duration of 5 minutes. Once the focused portion of the gradient is completed, quickly ramp the percentage of acetonitrile to 95% B to wash the column. End the gradient at initial conditions after equilibrating the column.

$5-45\% \text{ B} = 9\% \text{ per min (rounded to } 10\% \text{ per min)}$

2% per minute gradient slope

$10\% \text{ acetonitrile} \times 1 \text{ min} \times 2\% = 5 \text{ min}$

New focused gradient for isolating peak at 2.47 min:

Time	Flow	%A	%B
0	25	95	5
1	25	86.6	13.4
6	25	76.6	23.4
7	25	5	95
7.4	25	5	95
7.5	25	95	5
10.5	25	95	5

Focused Gradient Compared with Scouting Gradient

Scouting Gradient

Time	Flow	%A	%B
0	25	95	5
0.39	25	95	5
5.39	25	50	50
5.89	25	5	95
6.89	25	5	95
7.39	25	95	5
10.5	25	95	5

Focused Gradient

Time	Flow	%A	%B
0	25	95	5
1	25	86.6	13.4
6	25	76.6	23.4
7	25	5	95
7.4	25	5	95
7.4	25	95	5
10.5	25	95	5

The focused gradient clearly improves the separation between peaks 3 and 4 in the chromatogram in Figure 4. Peaks 5 and 6 shift because they are influenced by the focused portion of the gradient, which continues to elute compounds at the shallower slope until the higher percentage of acetonitrile programmed for column washing permeates the column. Shallow, focused gradients allow the chromatographer to obtain pure products and better recoveries due to better resolution of crude mixture components without an increase in run time.

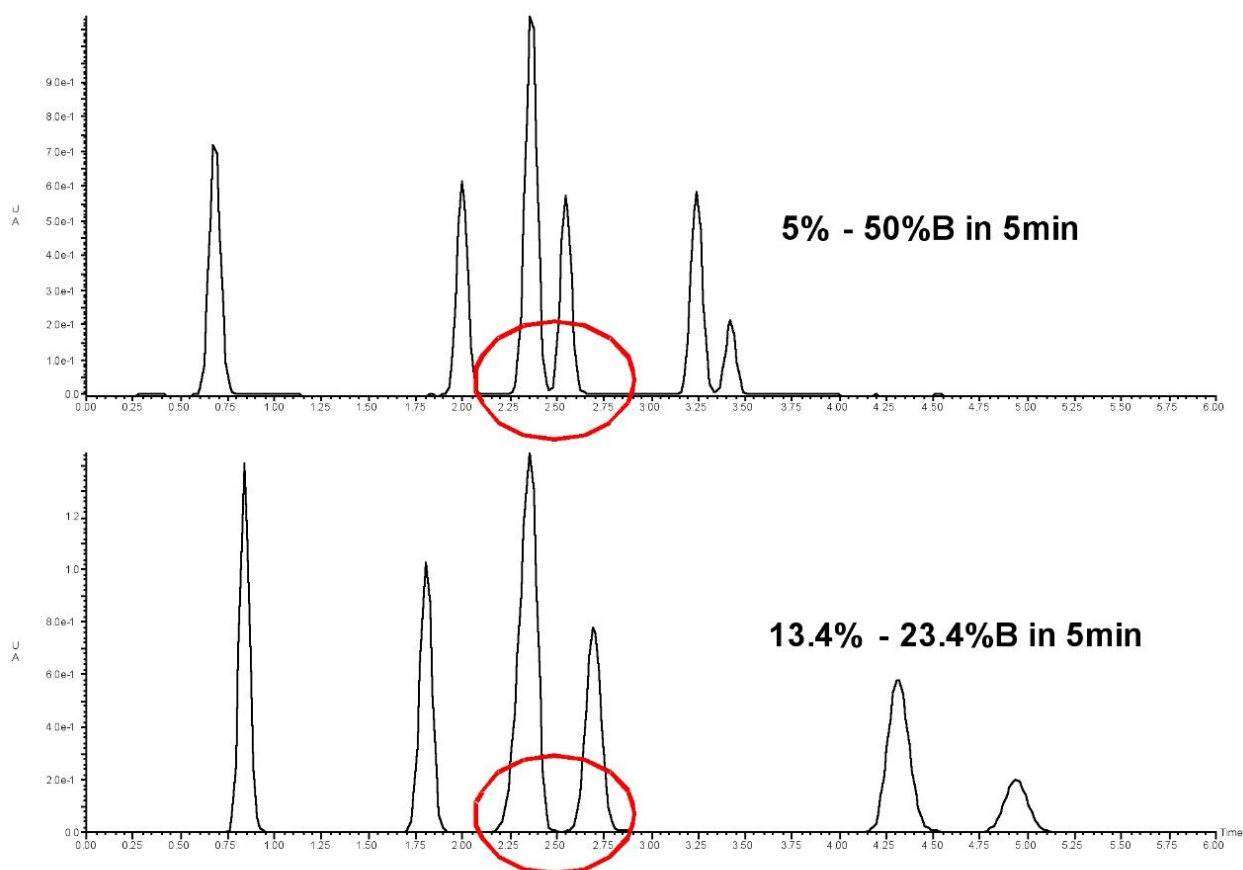


Figure 4. Top trace – Six compound mixture separation with scouting prep gradient (5%-50% B in 5 min). Bottom trace – Six compound mixture separation with focused large scale gradient to separate peaks 3 and 4 (13.4%-23.4% B in 5 min).

Conclusion

Scientists isolate compounds at high mass load when purifying products for future experiments. Focused gradients can improve an isolation by refining the resolution between closely eluting peaks without increasing the run time. Knowledge of the system volume permits the direct optimization of the prep gradient. Using focused gradients can increase the product yield and purity without increasing solvent consumption and waste generation. The focused gradient approach to developing isolations, therefore, helps to control purification costs.

Featured Products

2998 Photodiode Array (PDA) Detector <<https://www.waters.com/1001362>>

720002955, February 2009

©2019 Waters Corporation. All Rights Reserved.