

Note d'application

Analysis of Mouthwash Using XBridge Shield RP18

Waters Corporation



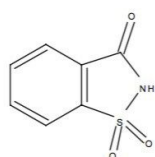
This is an Application Brief and does not contain a detailed Experimental section.

Abstract

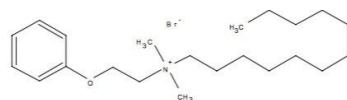
This application brief describes the analysis of mouthwash using XBridge Shield RP18 Column.

Introduction

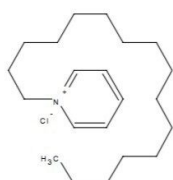
This application brief analyse various compounds including sodium saccharin, domiphen bromide, and cetylpyridinium chloride (Figure 1) using XBridge Shield RP18 Column.



Sodium Saccharin



Domiphen Bromide



Cetylpyridinium Chloride

Experimental

Test Conditions

Columns:

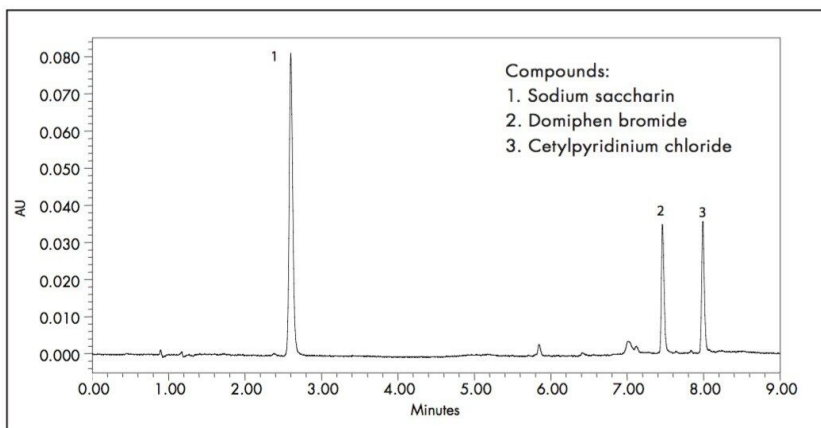
XBridge Shield RP18, 4.6 x 100 mm, 3.5 μ m

Part Number:	186003044
Mobile Phase A:	0.1 mM CH ₃ COONH ₄ , pH 5.4
Mobile Phase B:	ACN
Flow Rate:	1.2 mL/min
Injection Volume:	20 µL
Sample:	Sodium Saccharin (50 µg/mL), Domiphen Bromide (50 µg/mL), Cetylpyridinium chloride (10 µg/mL) in ACN/CH ₃ COONH ₄ (5/95)
Column Temp:	30 °C
Sample Temp:	20 °C
Detection:	UV @ 262 nm
Sampling Rate:	5 point/sec
Filter Response:	0.2
Instrument:	Waters Alliance 2695 with 2996 PDA

Gradient:

Time (min)	Profile	
	%A	%B
0.00	95	5
2.00	85	15
7.00	5	95
8.00	5	95
9.00	95	5
12.00	95	5

Results and Discussion



Featured Products

Alliance HPLC System <<https://www.waters.com/534293>>

WA60184, April 2008

© 2021 Waters Corporation. All Rights Reserved.