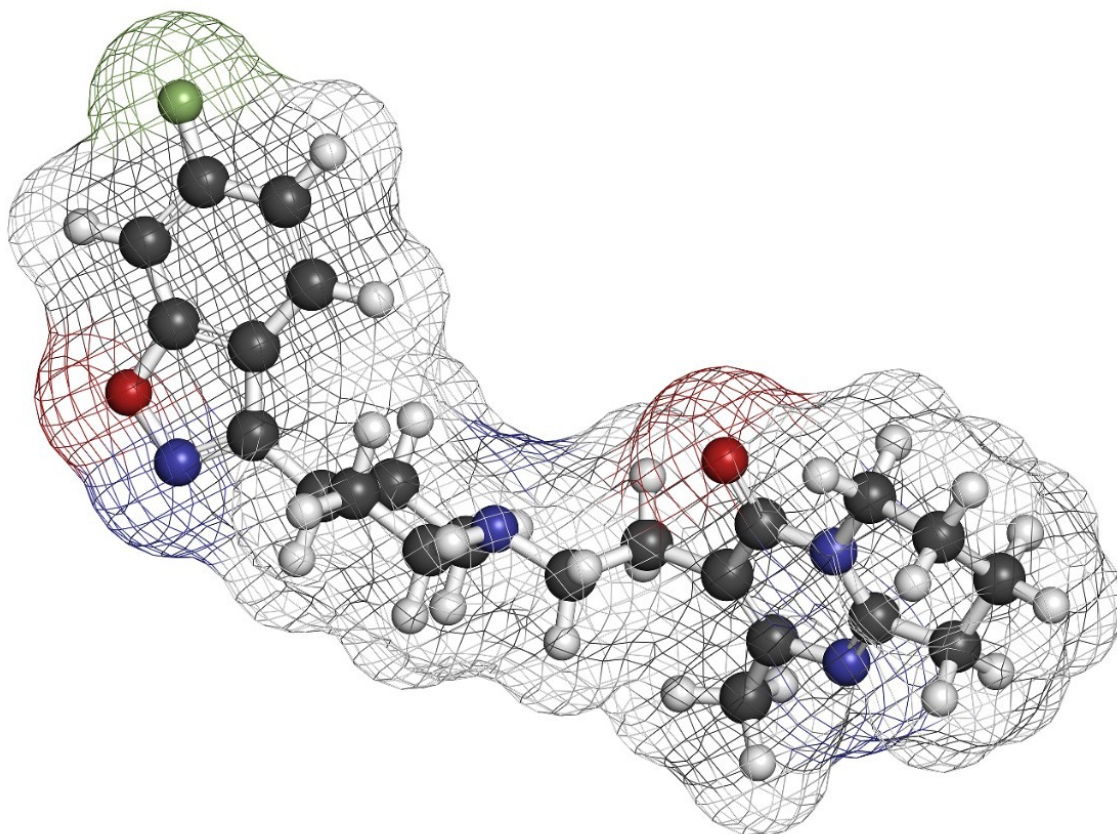


Analysis of Catecholamines using XBridge C

18

Waters Corporation

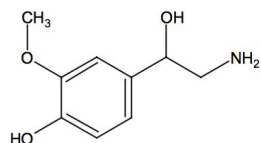


This is an Application Brief and does not contain a detailed Experimental section.

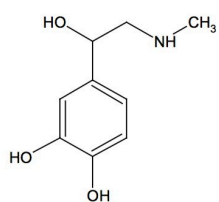
Abstract

This application brief highlights the analysis of catecholamines using XBridge C₁₈ columns.

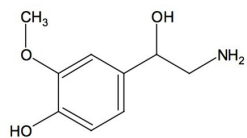
Introduction



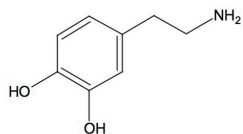
1. Norepinephrine



2. Epinephrine



3. Normetanephrine



4. Dopamine

Experimental

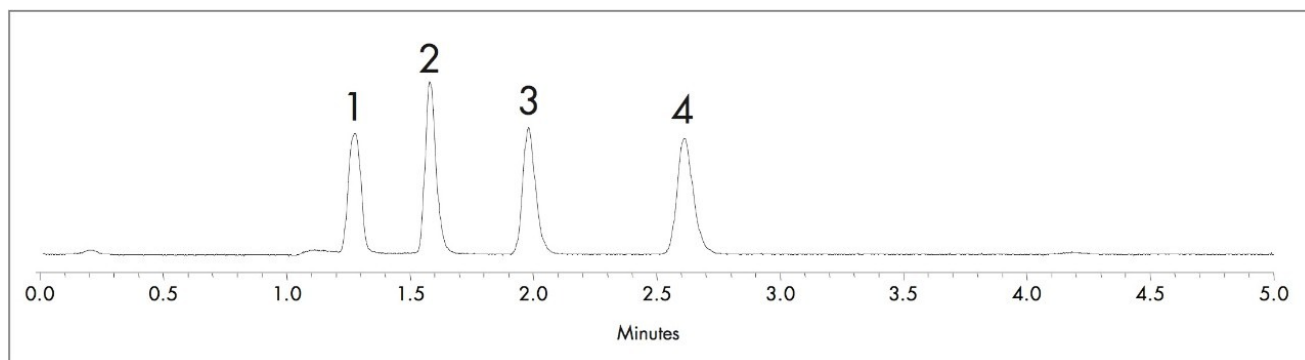
Test Conditions

Columns:

XBridge C₁₈, 5 μm, 4.6 x 150 mm p/n: 1860003116

Isocratic Mobile Phase:	20 mM Sodium phosphate buffer, pH 2.5/methanol (97:3)
Flow rate:	1.5 mL/min
Injection volume:	10 µL
Sample Concentration:	20 µg/mL in water
Temperature:	25 °C
Detection:	UV @ 210 nm
Instrument:	Alliance 2695 with 2996 PDA

Results and Discussion



Compounds: 1. Norepinephrine 2. Epinephrine 3. Normetanephine 4. Dopamine.

Featured Products

· [Alliance HPLC <https://www.waters.com/514248>](https://www.waters.com/514248)

WA60170, April 2007



© 2021 Waters Corporation. All Rights Reserved.