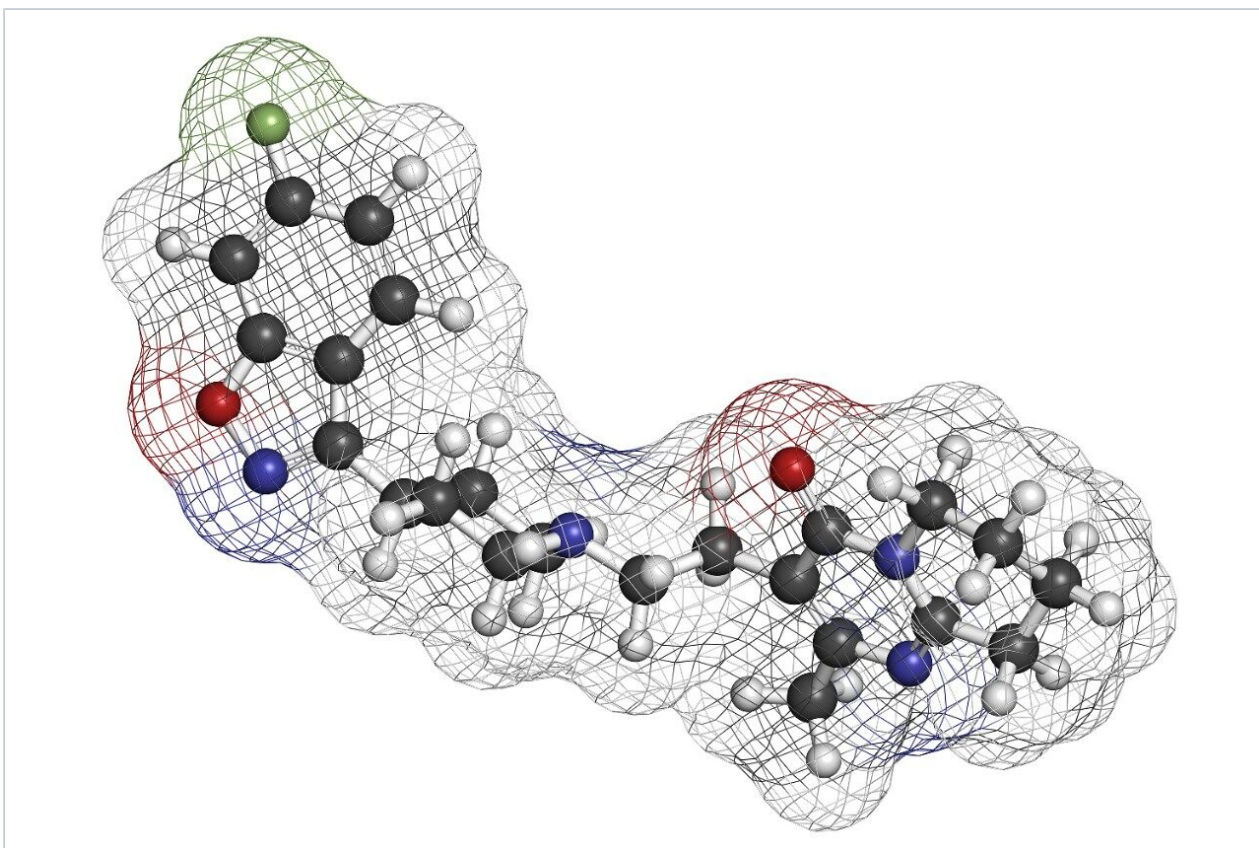


응용 자료

## Analysis of Catecholamines using XBridge C<sub>18</sub>

---

Waters Corporation



This is an Application Brief and does not contain a detailed Experimental section.

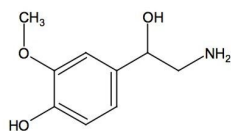
---

### Abstract

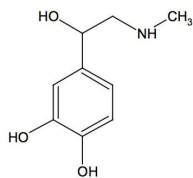
This application brief highlights the analysis of catecholamines using XBridge C<sub>18</sub> columns.

---

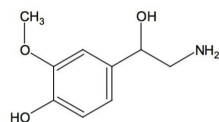
## Introduction



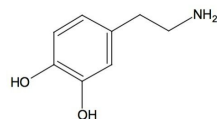
1. Norepinephrine



2. Epinephrine



3. Normetanephrine



4. Dopamine

---

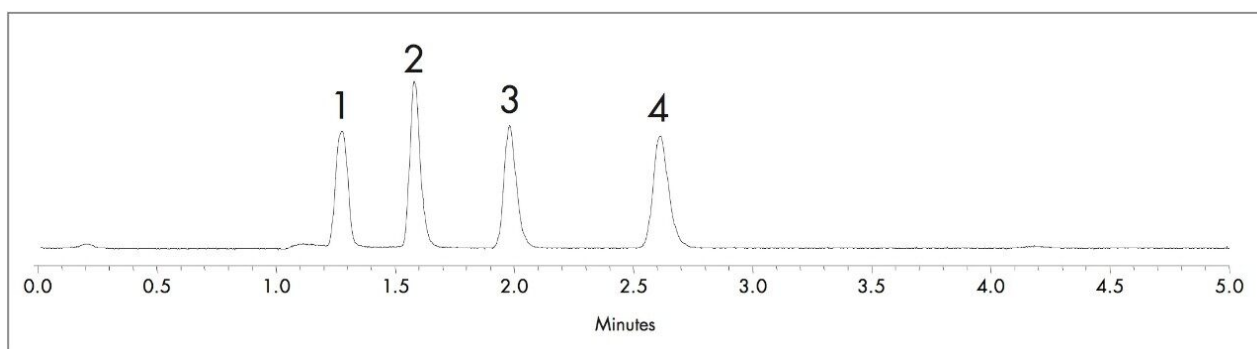
## Experimental

## Test Conditions

Columns:	XBridge C <sub>18</sub> , 5 µm, 4.6 x 150 mm p/n: 1860003116
Isocratic Mobile Phase:	20 mM Sodium phosphate buffer, pH 2.5/methanol (97:3)
Flow rate:	1.5 mL/min
Injection volume:	10 µL
Sample Concentration:	20 µg/mL in water
Temperature:	25 °C
Detection:	UV @ 210 nm
Instrument:	Alliance 2695 with 2996 PDA

---

## Results and Discussion



---

*Compounds: 1. Norepinephrine 2. Epinephrine 3. Normetanephine 4. Dopamine.*

---

## Featured Products

Alliance HPLC <<https://www.waters.com/514248>>

WA60170, April 2007

© 2021 Waters Corporation. All Rights Reserved.