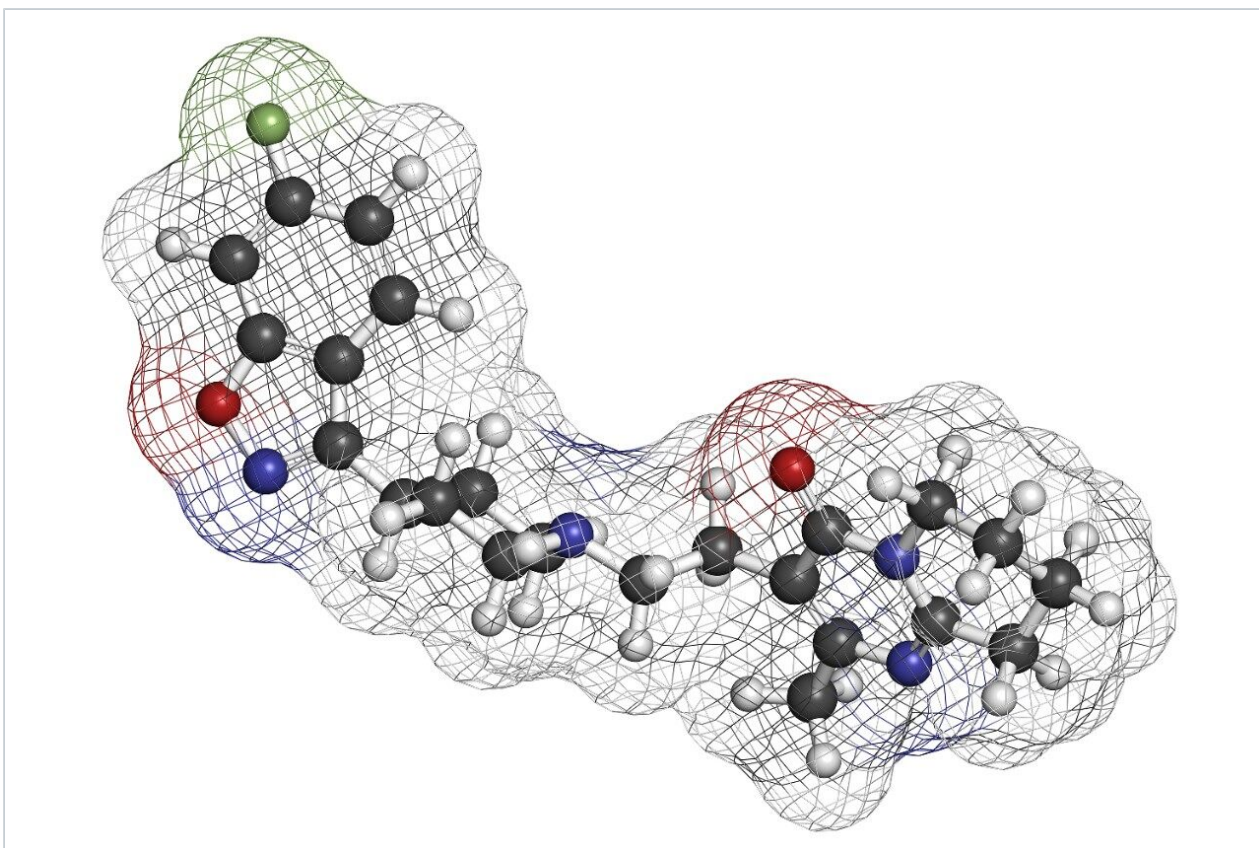


## Analysis of Catecholamines Using XBridge C<sub>18</sub>

---

Waters Corporation



This is an Application Brief and does not contain a detailed Experimental section.

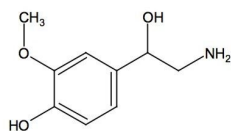
---

### Abstract

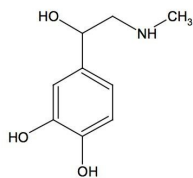
This application brief highlights the analysis of catecholamines using XBridge C<sub>18</sub> columns.

---

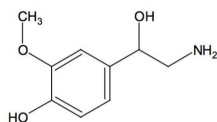
## Introduction



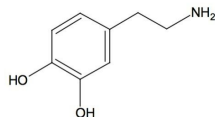
1. Norepinephrine



2. Epinephrine



3. Normetanephrine



4. Dopamine

---

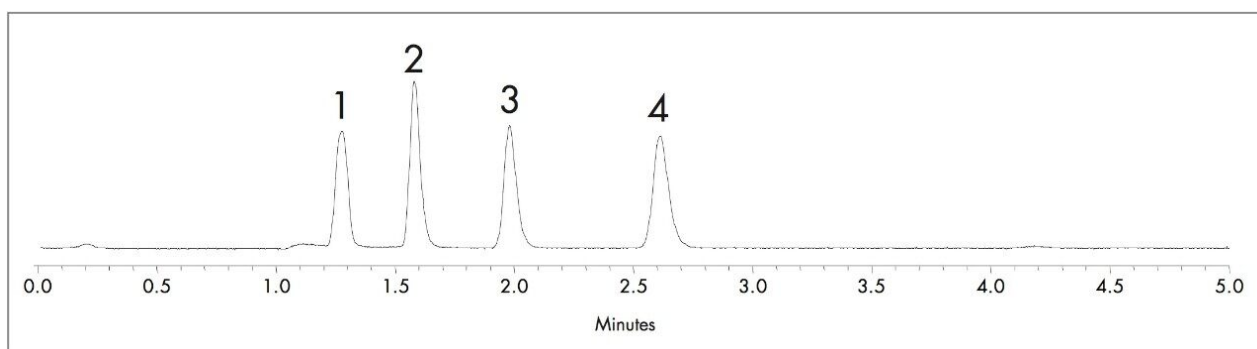
## Experimental

## Test Conditions

|                         |  |
|-------------------------|--|
| Columns:                | XBridge C <sub>18</sub> , 5 µm, 4.6 x 150 mm p/n: 1860003116 |
| Isocratic Mobile Phase: | 20 mM Sodium phosphate buffer, pH<br>2.5/methanol (97:3)     |
| Flow rate:              | 1.5 mL/min   |
| Injection volume:       | 10 µL  |
| Sample Concentration:   | 20 µg/mL in water  |
| Temperature:            | 25 °C  |
| Detection:              | UV @ 210 nm  |
| Instrument:             | Alliance 2695 with 2996 PDA                                  |

---

## Results and Discussion



---

*Compounds: 1. Norepinephrine 2. Epinephrine 3. Normetanephine 4. Dopamine.*

---

## Featured Products

Alliance HPLC <<https://www.waters.com/514248>>

WA60170, April 2007

© 2021 Waters Corporation. All Rights Reserved.