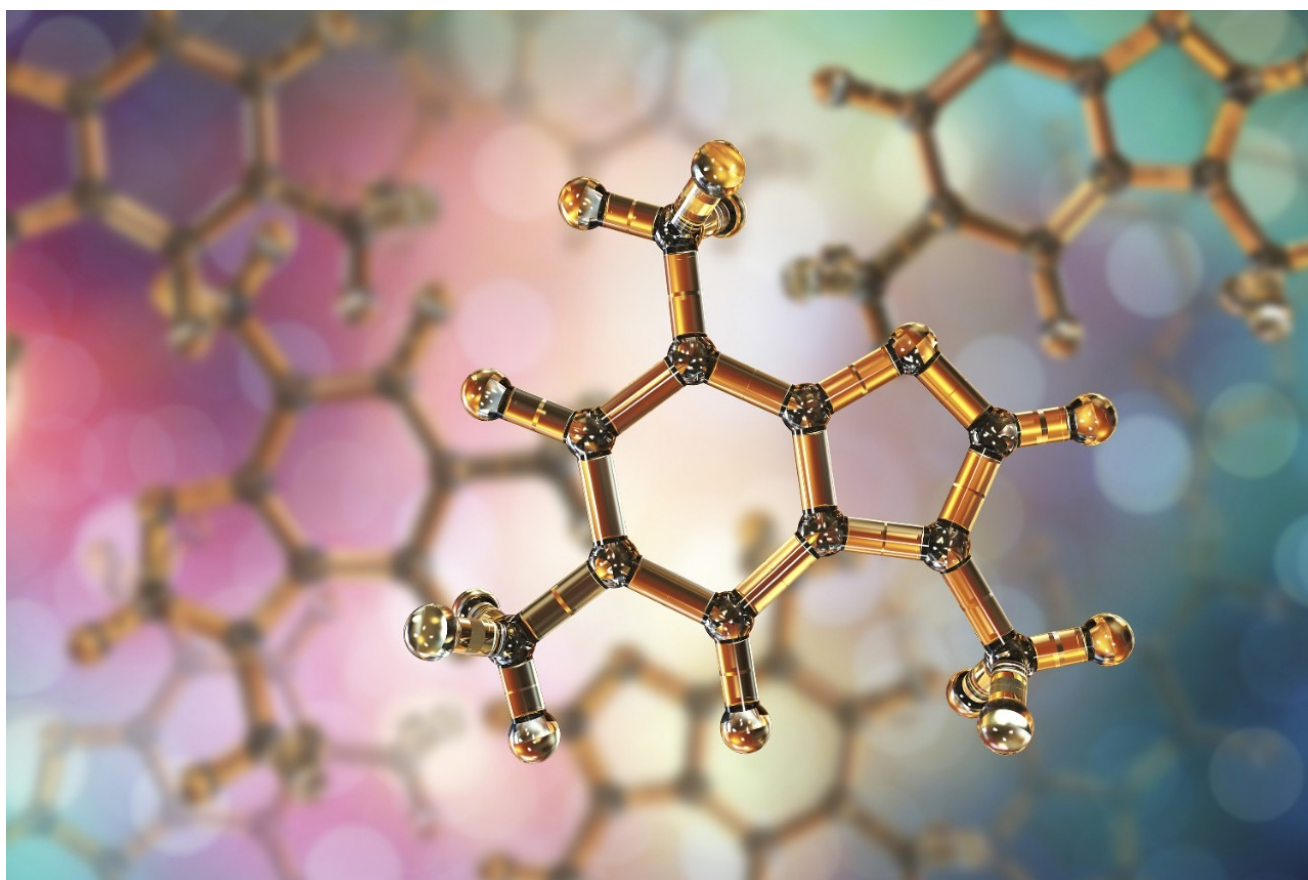


Analysis of Caffeine and Metabolites Using XBridge C₁₈

Waters Corporation

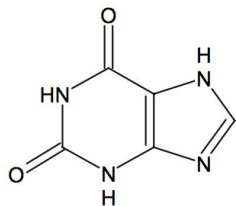


This is an Application Brief and does not contain a detailed Experimental section.

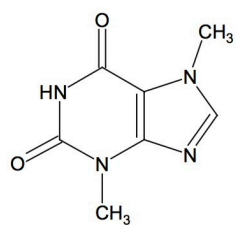
Abstract

This application brief highlights the analysis of caffeine and metabolites using XBridge C₁₈ Columns.

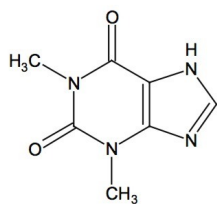
Introduction



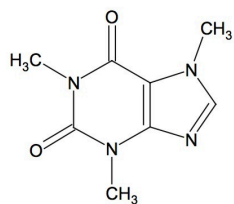
1. Xanthine



2. Theobromine



3. Theophylline



4. Caffeine

Experimental

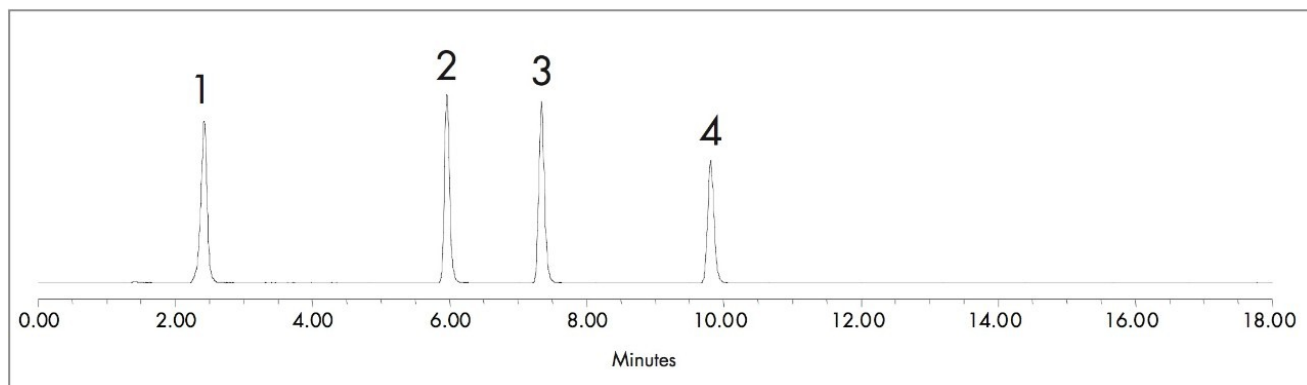
Test Conditions

Column:	XBridge C ₁₈ , 5 µm, 4.6 x 150 mm p/n: 186003116
Mobile Phase A:	5 Mm ammonium acetate pH 7.5
Mobile Phase B:	acetonitrile
Flow Rate:	1.0 mL/min
Injection Volume:	10 µL
Sample Concentration:	20 µg/mL in water
Temperature:	25 °C
Detection:	UV @ 273 nm
Instrument:	Alliance 2695 with 2996 PDA

Gradient

Time (min)	%A	%B
0.0	98	2
15.0	80	20
18.0	80	20
19.0	98	2
25.0	98	2

Results and Discussion



Featured Products

· [Alliance HPLC <https://www.waters.com/514248>](https://www.waters.com/514248)

WA60169, April 2007



© 2021 Waters Corporation. All Rights Reserved.