

Analysis of Tricyclic Antidepressants Using XBridge C₁₈, pH 7.0

Waters Corporation



This is an Application Brief and does not contain a detailed Experimental section.

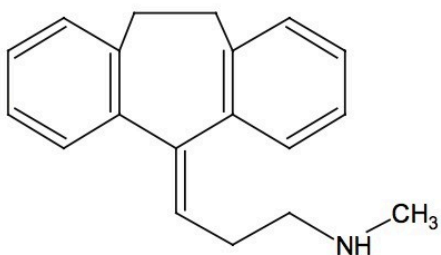
Abstract

This application brief highlights the analysis of tricyclic antidepressants using XBridge C₁₈ Columns at pH 7.0.

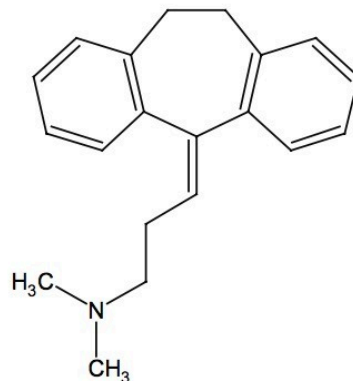
Introduction

Tricyclic antidepressants are analyzed in this application brief.

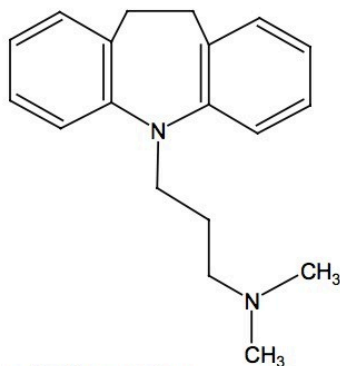
Compounds



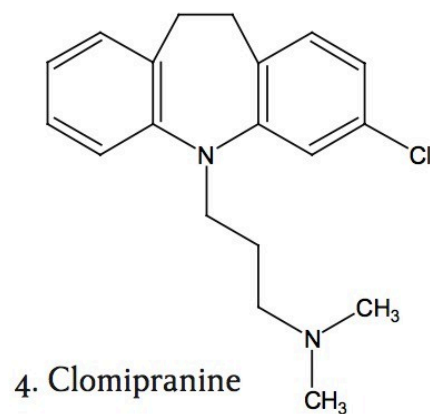
1. Nortriptyline



3. Amitriptyline



2. Imipramine



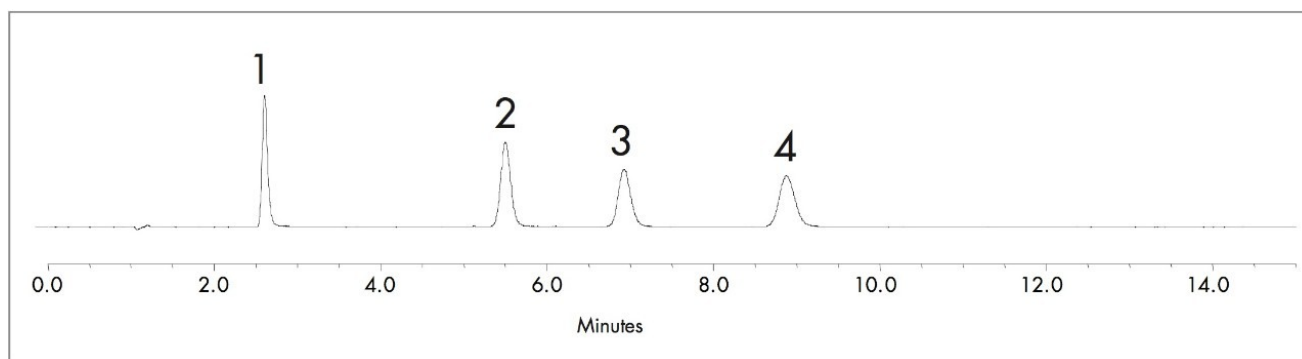
4. Clomipramine

Experimental

Test Conditions

Column:	XBridge C ₁₈ , 5 μm, 4.6 x 150 mm p/n: 186003116
Isocratic Mobile Phase:	20 mM sodium phosphate buffer, pH 7.0/acetonitrile/methanol (30:35:35)
Flow Rate:	1.5 mL/min
Injection Volume:	10 μL
Sample Concentration:	20 μg/mL in water
Temperature:	25 °C
Detection:	UV @ 254 nm
Instrument:	Alliance 2695 with 2996 PDA

Results and Discussion



Featured Products

· [Alliance HPLC <https://www.waters.com/514248>](https://www.waters.com/514248)

WA60167, April 2007



© 2021 Waters Corporation. All Rights Reserved.