

Analysis of Tricyclic Antidepressants Using XBridge C₁₈, pH 7.0

Waters Corporation



This is an Application Brief and does not contain a detailed Experimental section.

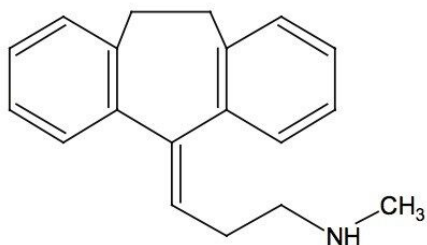
Abstract

This application brief highlights the analysis of tricyclic antidepressants using XBridge C₁₈ Columns at pH 7.0.

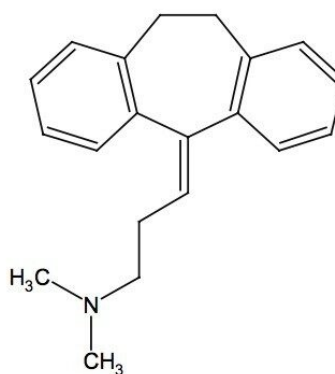
Introduction

Tricyclic antidepressants are analyzed in this application brief.

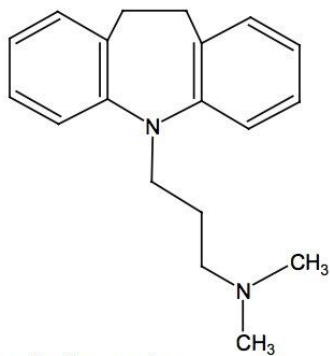
Compounds



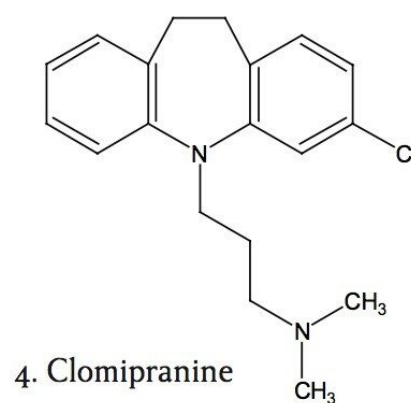
1. Nortriptyline



3. Amitriptyline



2. Imipramine



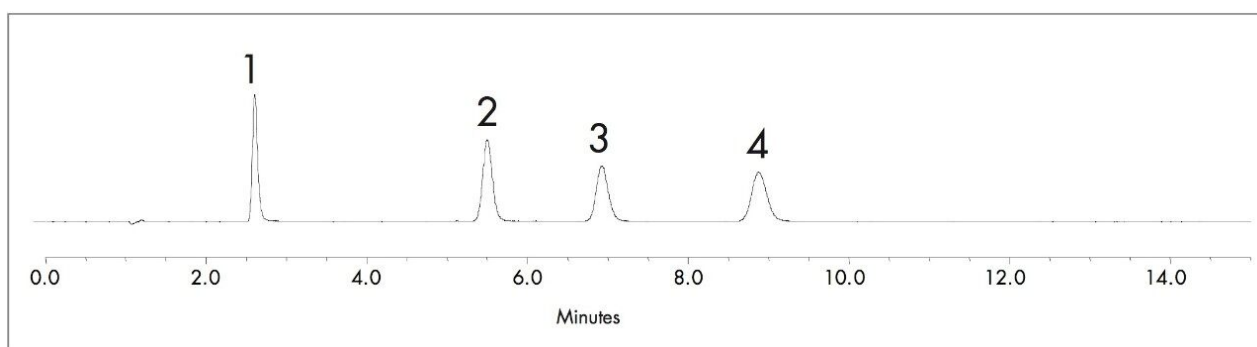
4. Clomipramine

Experimental

Test Conditions

| | |
|-------------------------|--|
| Column: | XBridge C ₁₈ , 5 µm, 4.6 x 150 mm p/n: 186003116 |
| Isocratic Mobile Phase: | 20 mM sodium phosphate buffer, pH 7.0/acetonitrile/methanol (30:35:35) |
| Flow Rate: | 1.5 mL/min |
| Injection Volume: | 10 µL |
| Sample Concentration: | 20 µg/mL in water |
| Temperature: | 25 °C |
| Detection: | UV @ 254 nm |
| Instrument: | Alliance 2695 with 2996 PDA |

Results and Discussion



Featured Products

Alliance HPLC <<https://www.waters.com/514248>>

WA60167, April 2007

© 2021 Waters Corporation. All Rights Reserved.