

アプリケーションノート

ASTM D5501- 04 for Denatured Fuel Ethanol: Automating Calculations and Reports with Empower 2 Software

Larry Meeker, Alice J. Di Gioia

日本ウォーターズ株式会社



Abstract

This application note briefly describes the use of Empower 2 Software for denatured fuel ethanol analysis and reporting.

Benefits

Easy-to-use to analyze and report fuel ethanol according to ASTM D5501-04

Introduction

Ethanol is becoming an increasingly important alternative fuel on a worldwide scale due to social, environmental, political and economic factors. Production from fermentation alone in the U.S. has increased from 1.6 billion gallons in 2000 to 3.4 billion gallons in 2004.¹ To ensure use as a fuel product, the ethanol is denatured by the addition of alkanes before shipment. ASTM2 method D5501-04, “Determination of Ethanol Content of Denatured Fuel Ethanol by Gas Chromatography,” details the analysis.

Producer labs and analysts are busy monitoring the lengthy ethanol fermentation process. Using Waters Empower 2 Software to streamline the final denatured ethanol analysis can save time. When an analyst can automate GC column conditioning and equilibration, data processing and calculations according to ASTM D5501-04 recommendations and print a report by filling in a small amount of information and pressing a Run button, that analyst is available to do other work in the lab or plant. Record keeping is easier with Empower as well. The sample identifiers that a lab uses, such as, sample name, batch, lot number, are trackable, traceable and searchable.

This application note briefly describes the use of Empower 2 Software for denatured fuel ethanol analysis and reporting. The analytical system was comprised of an Agilent 6850 GC with an FID detector and a client server running Empower 2.

Experimental

Standards were from a commercial source for the ASTM method.

Conditions, Software and System

System: Agilent 6850 GC with FID

Software: Empower 2

Column: DB-1 100 m x 0.25 μ film

Conditions: ASTM D5501-04

Results and Discussion

Setting Parameters

With Empower 2 Software anyone in the lab can easily automate the calculation and reporting of all the required values outlined in Section 12 of ASTM D5501- 04. The GC must be set up and run with parameters to comply with the ASTM method. These parameters are entered on individual tabs in the Empower instrument method (Figures 1–6).

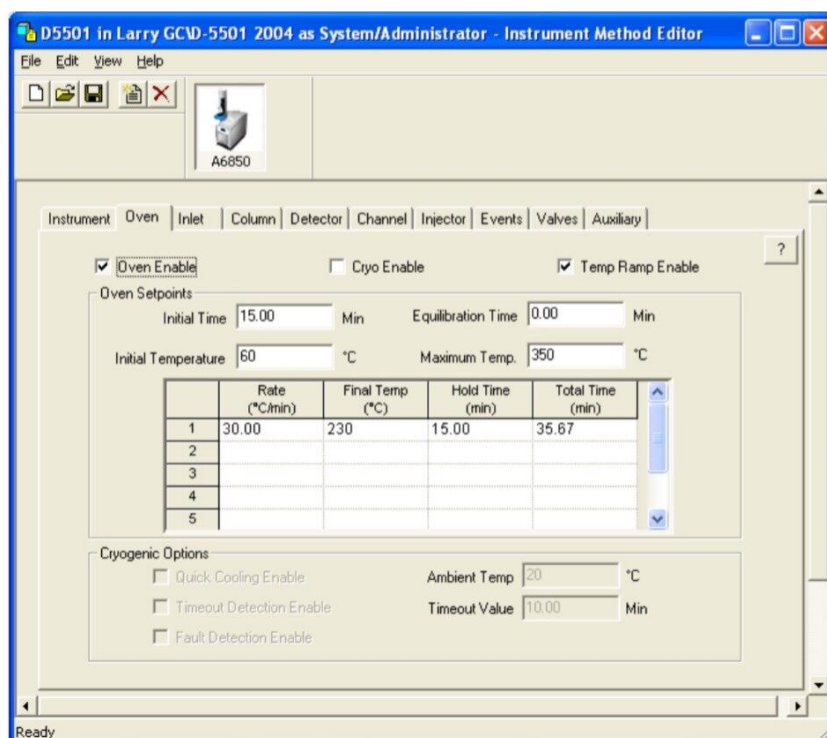


Figure 1. Oven Parameters.

D5501 in Larry GCD-5501 2004 as System/Administrator - Instrument Method Editor

File Edit View Help

A6850

Instrument Oven Inlet Column Detector Channel Injector Events Valves Auxiliary

Settings

Inlet Type: Split/Splitless Mode: Split

Temperature

☒ Enable Initial Temp: 250 °C

Gas Saver

☐ Enable On Time: 0.00 min Flow: 15.0 ml/min

Split/Splitless

Split Ratio: 200.0 to 1

Split Flow: 200.0 ml/min

Pulse Time: 0.00 min

Pulse Pressure: 0.0 psi

Purge

Flow: 0.0 ml/min

On Time: 0.00 min

Ready

Figure 2. Inlet Parameters.

D5501 in Larry GCD-5501 2004 as System/Administrator - Instrument Method Editor

File Edit View Help

A6850

Instrument Oven Inlet Column Detector Channel Injector Events Valves Auxiliary

Column Information

Length (m): 150.0 Description: DB-1 100m X .25 1u film

Diameter (u): 250 Serial Number:

Film Thickness (u): 1.00 Gas Type: He

Inlet Connection: Inlet Detector Connection: Detector

☐ Vacuum Correct ☐ Pressure Correct Pressure Correction Value: 0.00

Inlet Settings

Mode: Constant Flow

Initial Time: 1.00 min

Initial Flow: 1.0 ml/min

Initial Pressure: 1.0

| | Rate | Final | Hold Time (min) | Total Time (min) |
|---|------|-------|-----------------|------------------|
| 1 | | | | |
| 2 | | | | |
| 3 | | | | |

Ready

Figure 3. Column Parameters.

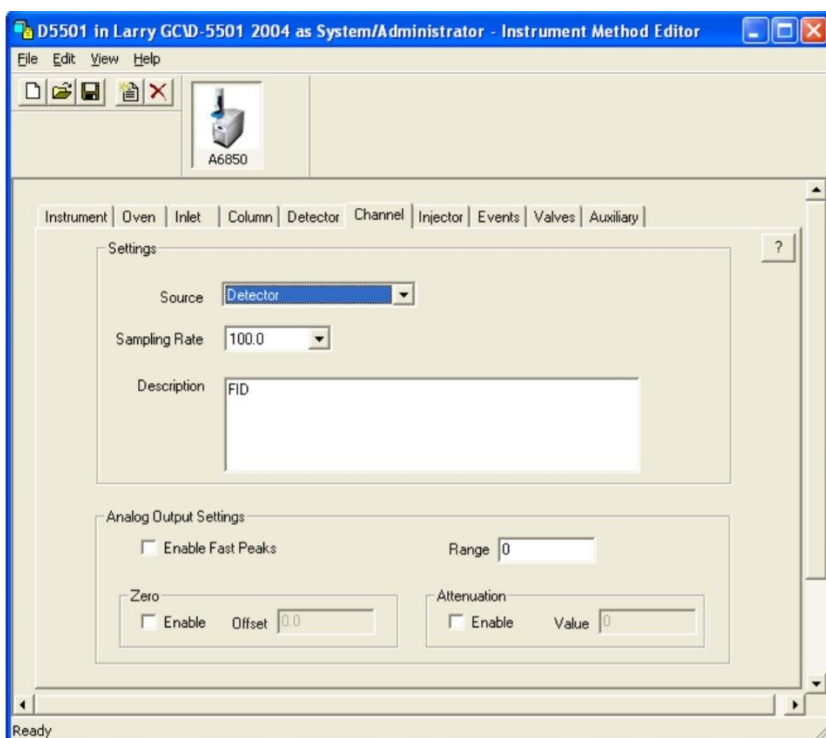


Figure 4. Detector Parameters.

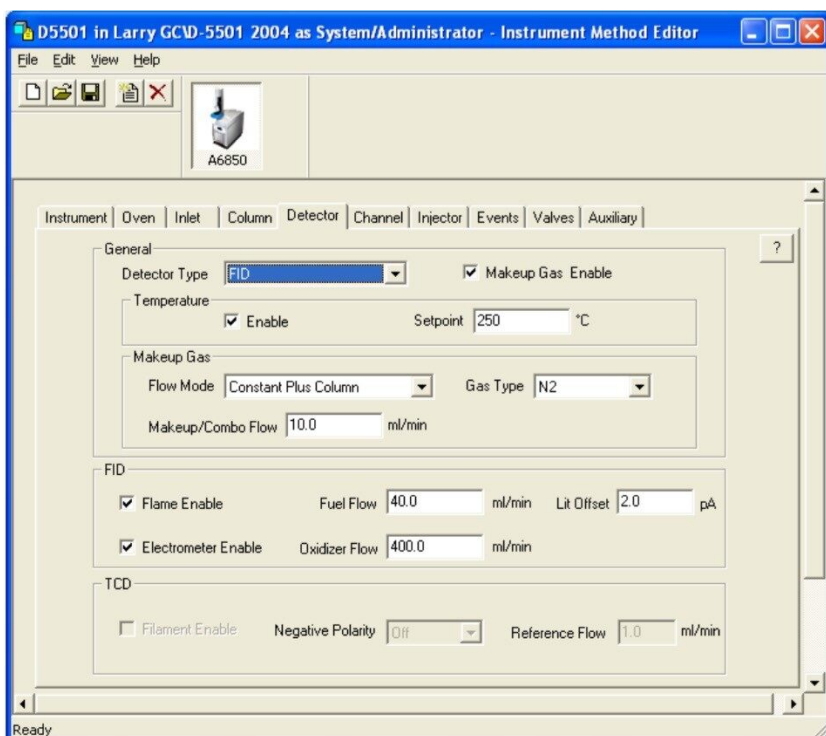


Figure 5. Channel (Sampling Rate) Parameters.

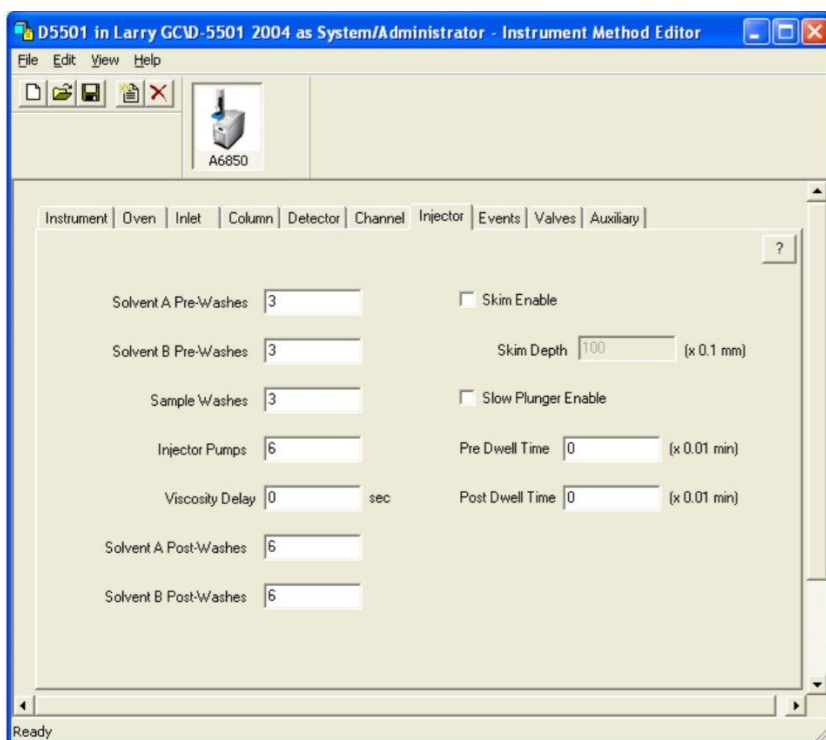


Figure 6. Injector Parameters.

Running Samples

To run samples, the next area of the software to use is the RUN SAMPLES page (Figure 7). When a sample template is used, the lab analyst only enters a minimum of information reducing the data entry burden. Data from two other required tests can be entered, stored, searched and plotted. Ds is the sample density determined using ASTM method D 1298 or D 4052 and % water is calculated using ASTM D1364 or E 1064. These data are needed to calculate the final % Mass of alcohols. If the sample density and % water are unavailable when the GC analysis is run, the values can be entered later and the final result calculated.

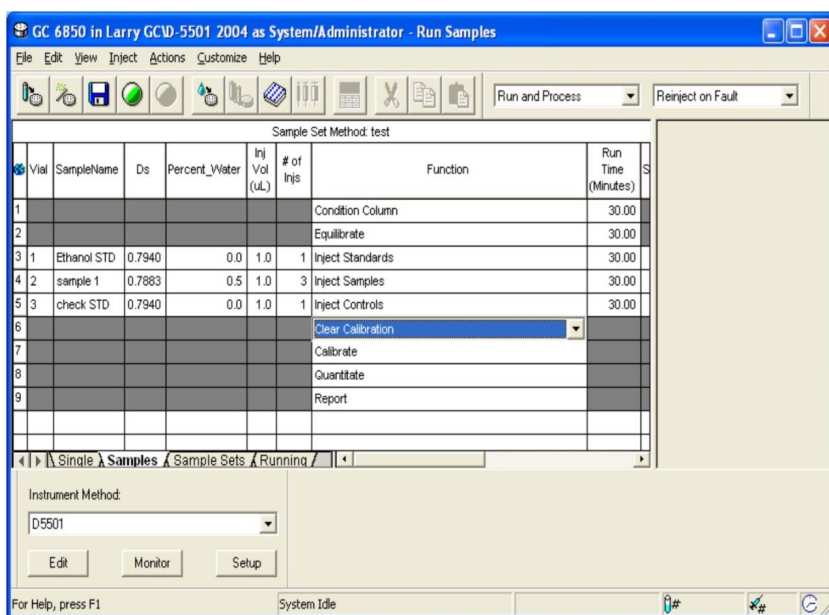


Figure 7. Running Samples.

Automatic Monitoring and Processing

Critical to success in daily operation is ensuring that unattended systems generate quality data. With Empower 2 you can do more than just set up initial conditions and wait for temperatures to meet set points. The software has features that allow easy automation and monitoring of system setup, column conditioning, system equilibration and calibration, running samples, performing required calculations, and printing a custom report. This interactive process ensures the analysis begins, runs properly and generates data. Control values can also be set using the System Suitability option. This feature analyzes the data from each injection relative to defined parameters, such as retention time or response. If the value is outside tolerance, the user can set the system to take corrective action, for example, re-inject of the sample or stopping the run completely.

Automatic Calculations and Reporting

After the analysis has been run, Empower 2 can be set up to automatically process the data, perform calculations and report results. There are three key benefits to these features. First is the ability to smooth the GC FID data with software as opposed to filtering the data in the hardware.

In the processing method the user can define both the smoothing type and by how much the raw data should be smoothed (Figure 8). This is important with high speed data typically collected today. The data shown in Figure 11 were collected at 100 Hz. Second, performing calculations to meet the needs of Section 12 of ASTM D5501 can be done automatically with Empower 2 instead of using a calculator or spreadsheet.

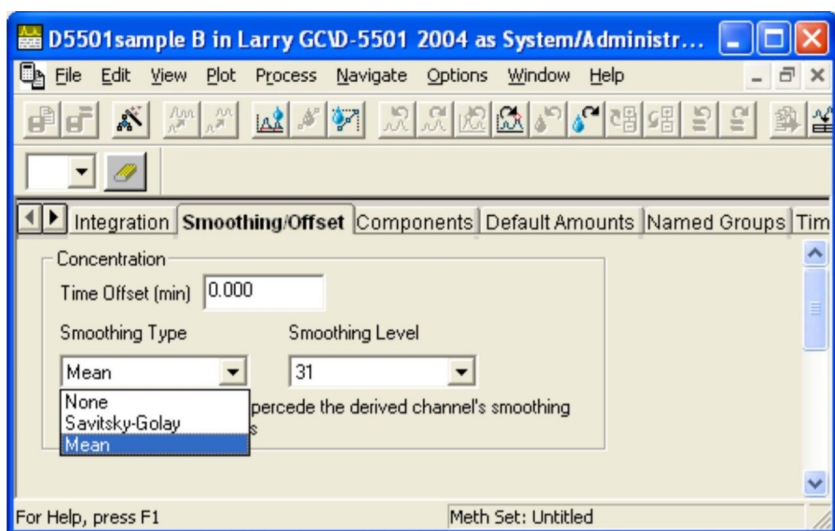


Figure 8. Smoothing Parameters.

A unique feature of Waters Empower 2 Software is Custom Fields, a tool that lets users define equations for their needs in standard math syntax not a programming code (Figure 9). The interface is as easy to use as writing an equation on a piece of paper. These custom fields meet the needs of Section 12.

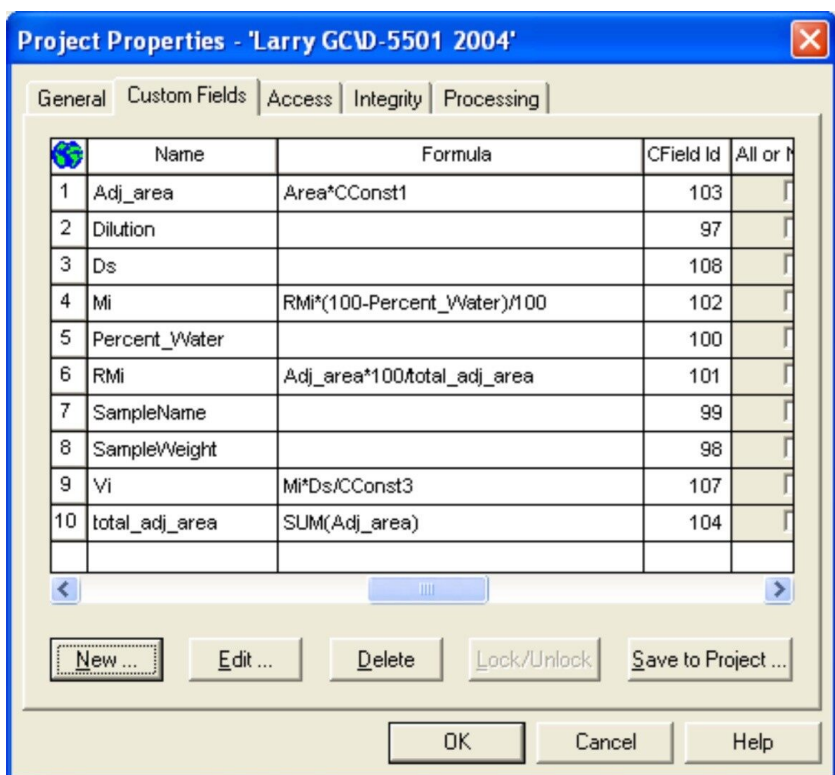


Figure 9. Equations for ASTM 5501 Calculations.

The equation for the custom field, %mass or Mi, was created using simple math. Empower 2 is easier to use than writing an equation on a piece of paper (Figure 10).

Edit Custom Field - Mi

Field Type

- ☐ Sample
- ☐ Result
- ☒ Peak
- ☐ Sample Set
- ☐ Component

Data Type

- ☐ Integer (0)
- ☒ Real (0.0)
- ☐ Text
- ☐ Date
- ☐ Boolean
- ☐ Enum

Data Source

- ☐ Keyboard
- ☐ External
- ☒ Calculated

Name :

Width :

Precision :

Min. :

Max. :

Translation Definition:

| Value | Translation |
|-------|-------------|
| | |
| | |
| | |
| | |
| | |

Default Value : ☐ User Entry Required ☐ Custom Field Locked

Calculation Criteria

Search Order: ☐ All or Nothing Use As:

Sample Type:

Peak Type: ☐ Missing Peak

Calculated Field Formula

Figure 10. Creating equations using simple math.

The third key benefit of Empower 2 software is the reporting capability. After setting up templates and fields one time, the system can automatically print a report. The report is fully customizable. Figure 11 is an example of such a report.

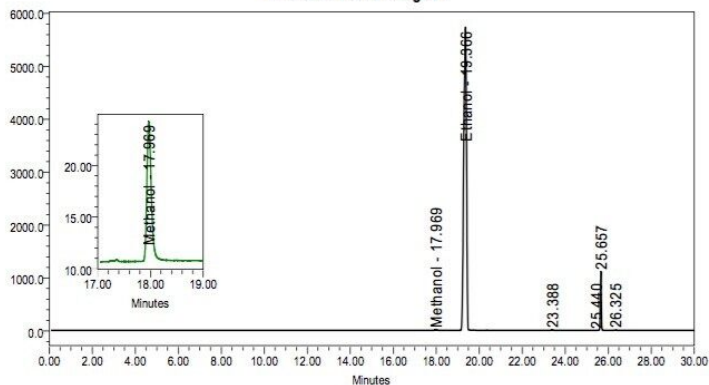
SAMPLE INFORMATION

Sample Name: D5501sample A
Sample Type: Unknown
Vial: 1
Injection #: 6
Injection Volume: 1.00 ul
Run Time: 30.0 Minutes

Acquired By: System
Sample Set Name: D5501
Acq. Method Set: D5501
Processing Method: Ethanol
Channel Name: Detector
Proc. Chnl. Descr.: Detector, Smoothed by 31 point

Date Acquired: 04/04/2006 5:33:28 PM EDT
Date Processed: 06/01/2006 6:27:17 PM CDT

Auto-Scaled Chromatogram



% Water by ASTM D1364 or E 1067
0.0

Ds Sample Density by ASTM D 1298 or D 4052
0.7900

Peak Results

| | Name | RT | Corrected Area (AR) | Relative Mass % (RM) | Mass % (M) | Volumetric Concentration (V) |
|-----|----------|--------|---------------------|----------------------|------------|------------------------------|
| 1 | Methanol | 17.969 | 244.41 | 0.22 | 0.22 | 0.22 |
| 2 | Ethanol | 19.366 | 105139.55 | 94.91 | 94.91 | 94.43 |
| 3 | Heptanes | 23.388 | 5398.70 | 4.87 | 4.87 | 5.67 |
| Sum | | | | | 100.0 | |

Reported by User: System
Report Method: d5501
Report Method ID: 1155

Project Name: Larry GOLD-5501 2004
Date Printed: 06/01/2006
7:58:51 PM US/Central

Figure 11. Empower 2 report.

Besides sample information, Empower 2 software can be used to generate reports for tracking and trending data. Figures 12 and 13 are summary plots of 14 ethanol batches showing the % Mass (Mi) for methanol, ethanol and the heptanes. The Limit bars in Figure 13 were set as part of the system suitability.

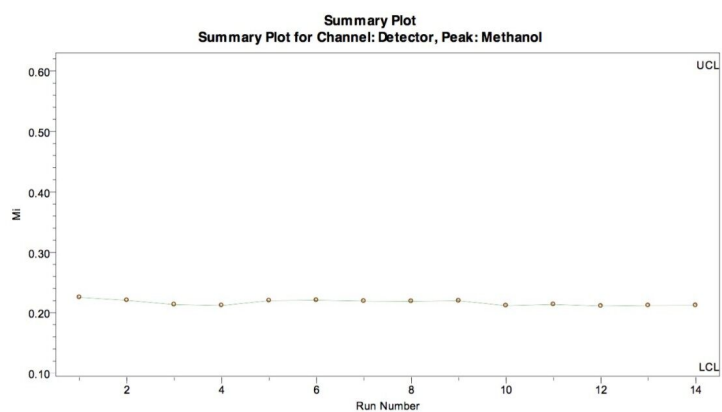


Figure 12. Methanol.

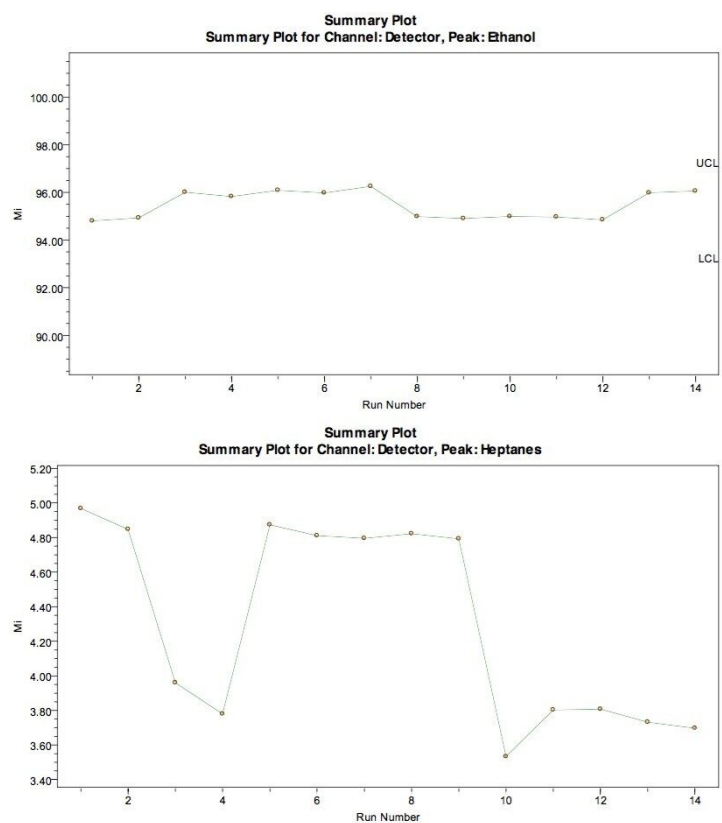


Figure 13. Ethanol and Heptane.

Conclusion

Empower 2 Software is easy-to-use to analyze and report fuel ethanol according to ASTM D5501-04. The software allows use of a template that includes instrument parameters such as conditioning and equilibration, data processing instructions and report instructions. The equations needed to calculate required values, such as % mass, can be built-in one time with the Custom Field feature and re-used. All the analyst must do is load the sample and a template, enter minimum information and hit run. After the run is finished, the analyst can be confident that quality data are printed. Using interactive system suitability, runs can be re-injected or stopped based on user pre-defined limits. With the System Suitability option, more advanced trending and tracking data features are available.

References

1. BioFuels Journal, posted 3/7/2005, Annual and Monthly U.S. Ethanol Production.
2. www.astm.org D5501-04 Standard Test Method for Determination of Ethanol Content of Denatured Fuel Ethanol by Gas Chromatography.

Featured Products

[Empower Chromatography Data System <https://www.waters.com/513188>](https://www.waters.com/513188)

720001840, July 2006