

Applikationsbericht

SunFire C₈: A Unique RPLC Stationary Phase for Best Peak Shapes

Fang Xia, Kim Van Tran, Diana Swanson, Pamela C. Iraneta, Diane M. Diehl

Waters Corporation



Abstract

This application note highlights about the benefits of SunFire C₈ Columns.

Benefits

The new SunFire C₈ Column is a reversedphased (RP) HPLC column designed for the best peak shape, excellent efficiency, highpreparative mass loading, and superior stability under low-pH conditions.

Introduction

HPLC columns with alkyl chains (e.g. C₁₈ and C₈) are the most popular columns used in a variety of industries. For a given RPLC substrate with a given bonding technology, the retention increases with increasing alkyl chain length due to higher hydrophobic interactions. The advantages of using shorter chain length ligands include decreased total run time, improved peak tailing, and predictable selectivity for easy methodology transfer. The SunFire C₈ Columns are engineered with highly pure raw materials and a tightly controlled synthesis process. This column provides high efficiencies and symmetric peak shapes for the analysis of acids, neutrals, and bases. The columns also exhibit superior lifetimes under low-pH conditions.

Experimental

Experimental Conditions (Figure 1)

Columns:	SunFire C ₈ 4.6 x 150 mm, 5 µm and SunFire C ₁₈ 4.6 x 150 mm, 5 µm
Flow rate:	1.0 mL/min
Isocratic:	55:35:10 (water: acetonitrile: 2% acetic acid)
Injection volume:	10 µL
Sample:	Oxazepam, lorazepam, desmethyldiazepam,

temazepam, and diazepam at concentration of 10 µg/mL each in water

Detection: UV at 254 nm

Instrument: Alliance 2695 with 2996 PDA

Experimental Conditions (Figure 2)

Columns: SunFire C₈, Luna C₈ (2), Ace 5 C₈, all columns are 3.0 x 50 mm, 5 µm

Mobile phase: 1% TFA in water

Injection volume: 5 µL

Sample: Ethylparaben at concentration of 0.64 mg/mL

Results and Discussion

The separation of five central nervous system (CNS) depressants on the analytical SunFire C₈ and SunFire C₁₈ Columns are shown in Figure 1. As noted, total run time has decreased from 24 min on a C₁₈ column to 16 min on the C₈ Column. Furthermore, better peak shapes were observed on the C₈ Column.

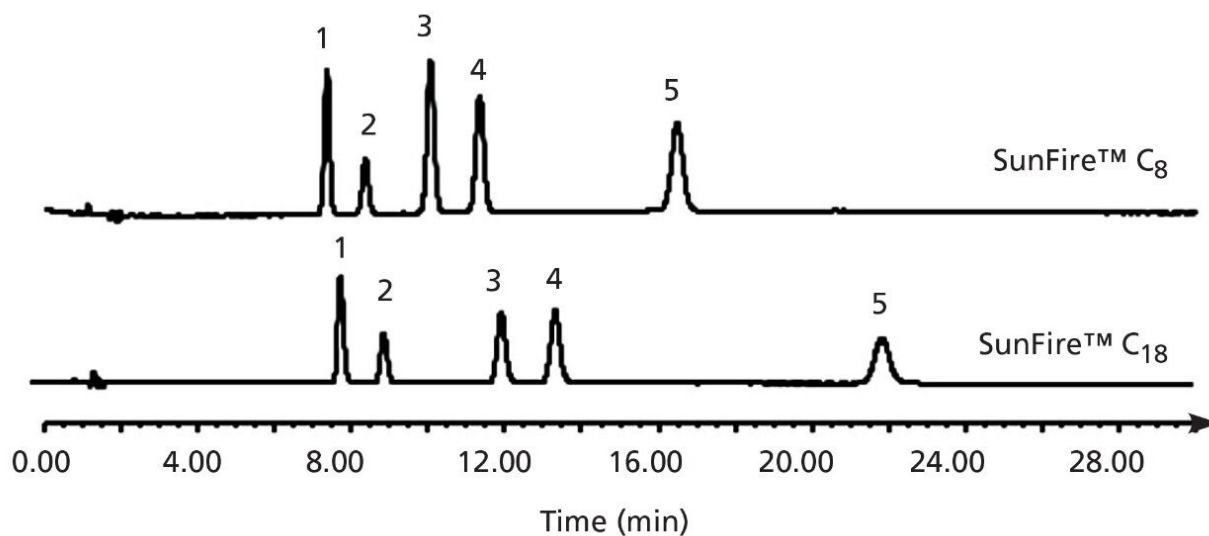


Figure 1: Separation of the central nervous system (CNS) depressants on the analytical SunFire C₈ and SunFire C₁₈ columns. Column dimensions: 4.6 x 150 mm, 5 μm Analytes: (1) oxazepam, (2) lorazepam, (3) desmethyldiazepam, (4) temazepam, and (5) diazepam.

Figure 2 is the SunFire C₈ Column lifetime study under accelerated low-pH stability conditions. SunFire C₈ columns have improved low-pH stability compared to leading silica-based C₈ Columns due to the unique bonding and end-capping technology.

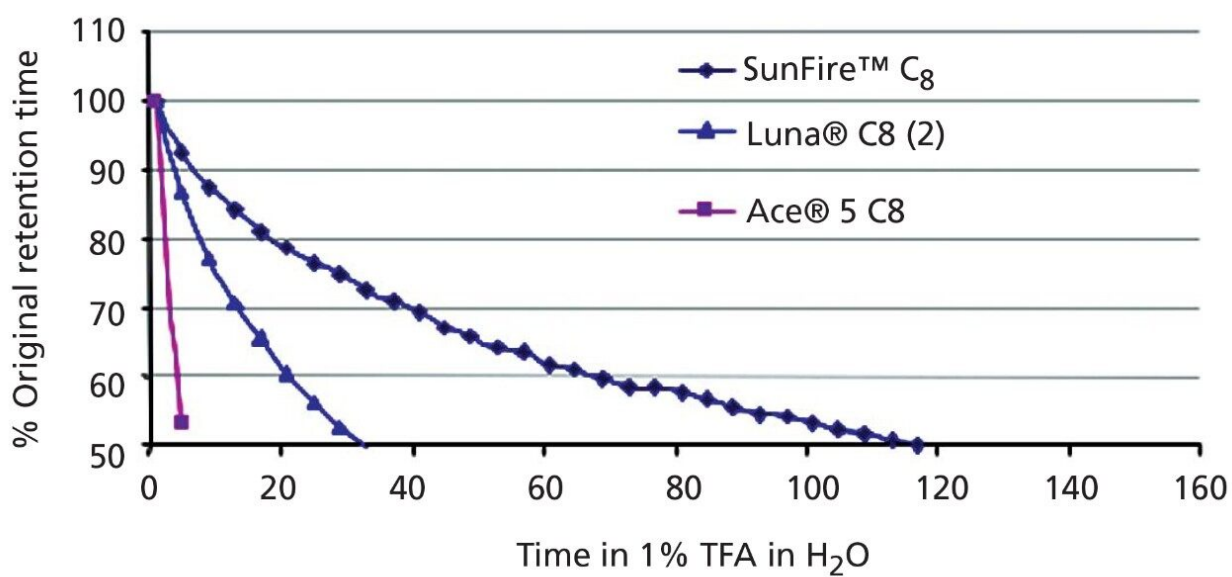


Figure 2. Column stability study under accelerated low-pH test. Mobile phase: 1% TFA in water. Analyte: ethylparaben.

Conclusion

Faster separations, improved peak shape, and superior stability under low-pH conditions are observed with SunFire C₈ Columns.

Featured Products

Alliance HPLC System <<https://www.waters.com/534293>>

2998 Photodiode Array (PDA) Detector <<https://www.waters.com/1001362>>

© 2021 Waters Corporation. All Rights Reserved.