

## Catechin Mixture: SunFire Intelligent Speed Separation

---

Waters Corporation



This is an Application Brief and does not contain a detailed Experimental section.

---

### Abstract

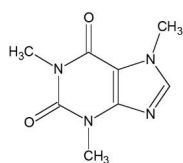
This application brief highlights the separation of Catechin mixture found in tea using SunFire *IS* Column.

---

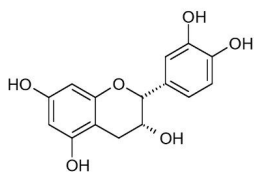
## Introduction

Compounds use in this study:

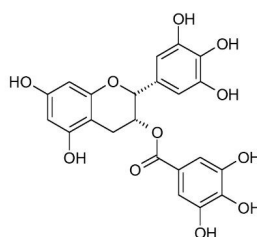
1. Caffeine
2. Epicatechin
3. Epigallocatechin Gallate



Caffeine



Epicatechin



Epigallocatechin Gallate

---

## Experimental

### Conditions

Column:	SunFire C <sub>8</sub> 4.6 x 150 mm, 5 µm
Part number:	186002549
Mobile phase A:	0.1% HCOOH in Water
Mobile phase B:	0.1% HCOOH in Acetonitrile

Flow rate: 3 mL/min

Injection volume: 10  $\mu$ L

Sample concentration: 20  $\mu$ g/mL in water

Temperature: 30  $^{\circ}$ C

Detection: UV @ 280 nm

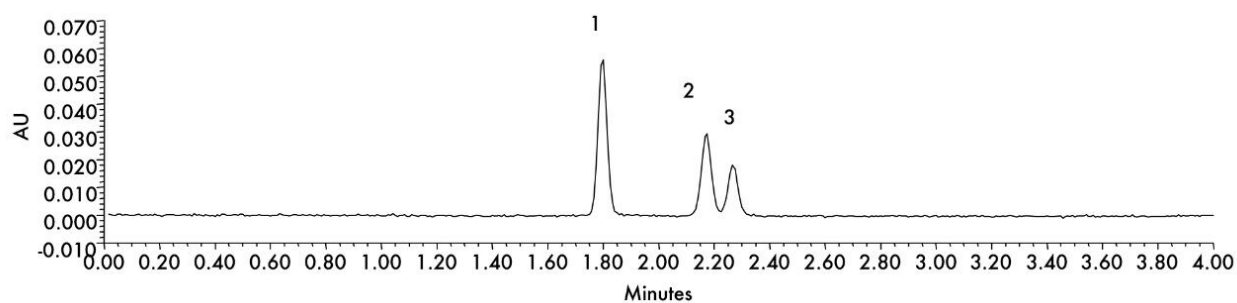
Instrument: Alliance 2695 with 2996 PDA

## Gradient

Time (min)	Profile	
	%A	%B
0.0	100	0
4.0	60	40

---

## Results and Discussion



---

## Featured Products

Alliance HPLC <<https://www.waters.com/514248>>

WA41888, March 2005

© 2021 Waters Corporation. All Rights Reserved.