

## Solvent and Waste Monitoring

---

Ronan Cleary, Paul Lefebvre

Waters Corporation



This is an Application Brief and does not contain a detailed Experimental section.

### Abstract

Solvent management is vitally important in a purification system, especially when the system is operated in an

---

Open Access environment by multiple users. Software-based solvent and waste monitoring provides an accurate and easy way to manage information for system users. User-programmable alarms and automatic corrective actions provide greater confidence in running the system unattended. Alerting users of a potential problems before they occur increases system efficiency, saving both time and money. We describe an example of such software with the Waters AutoPurification System.

## Introduction

Purification systems have multiple solvent containers, so each one must be uniquely identified. These containers can have different volumes and warning levels, and multiple pumps may draw solvent from the same reservoir.



Figure 1. Each solvent container is identified. Initial and acute warning levels are entered in the vessel status page. The current volume of solvent in the 4L acetonitrile container is 3L, with an initial warning level of 1L and an acute level of 0.25L.

Once the various reservoirs have been set up, all of the solvent level information is conveniently available via a single screen in MassLynx Software.

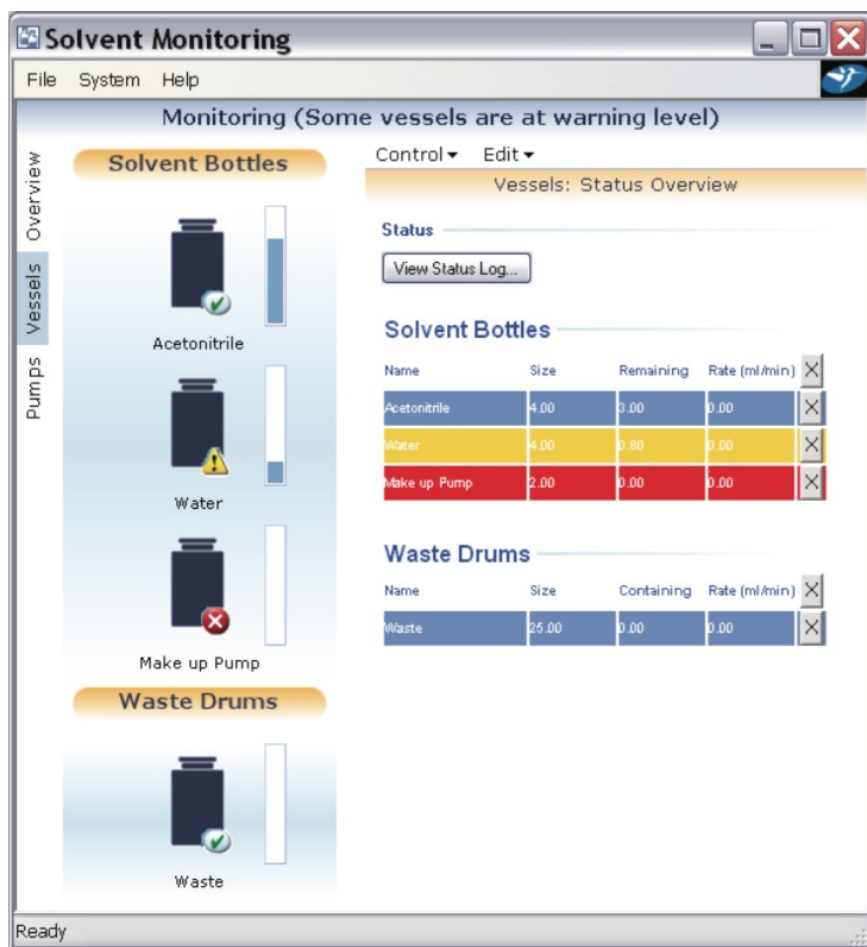
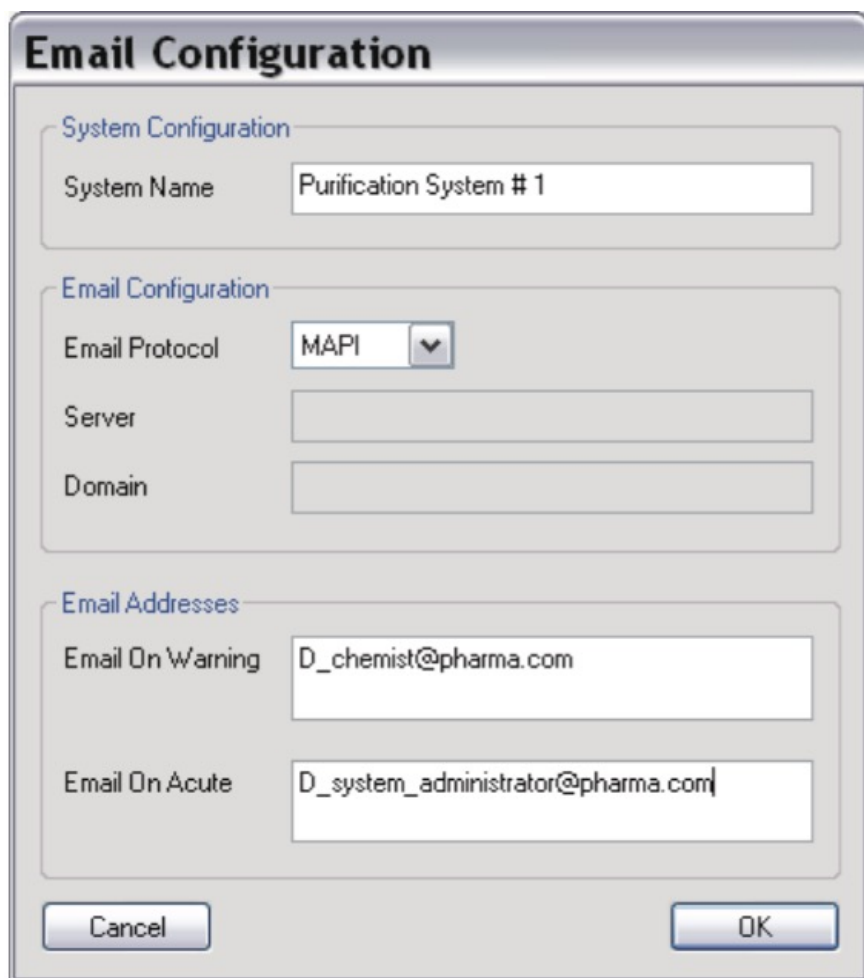


Figure 2. Individual containers indicate different status levels: "OK", "warning level" reached, and "acute level" reached.

Email notification is available when a status level has been reached. Two messages may be automatically sent: when the warning level is reached (1L), and when the acute level is reached (0.25L).



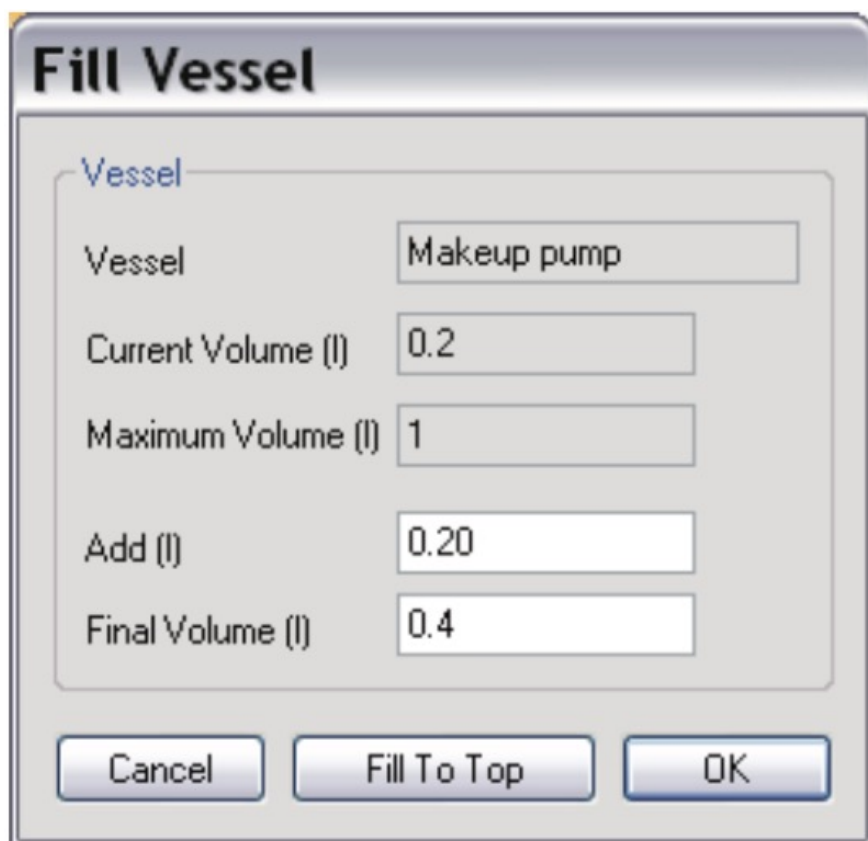
The image shows a Windows-style dialog box titled "Email Configuration". It is divided into three sections: "System Configuration", "Email Configuration", and "Email Addresses".

- System Configuration:** Contains a single text field labeled "System Name" with the value "Purification System # 1".
- Email Configuration:** Contains a dropdown menu for "Email Protocol" set to "MAPI", and two empty text fields for "Server" and "Domain".
- Email Addresses:** Contains two text fields. The first is labeled "Email On Warning" and contains "D\_chemist@pharma.com". The second is labeled "Email On Acute" and contains "D\_system\_administrator@pharma.com".

At the bottom of the dialog are two buttons: "Cancel" on the left and "OK" on the right.

Figure 3. Email settings with different contact options, depending upon the solvent level status.

The administrator can then fill the reservoir or empty the waste container and reset the value as necessary.



**Fill Vessel**

Vessel

Vessel: Makeup pump

Current Volume (l): 0.2

Maximum Volume (l): 1

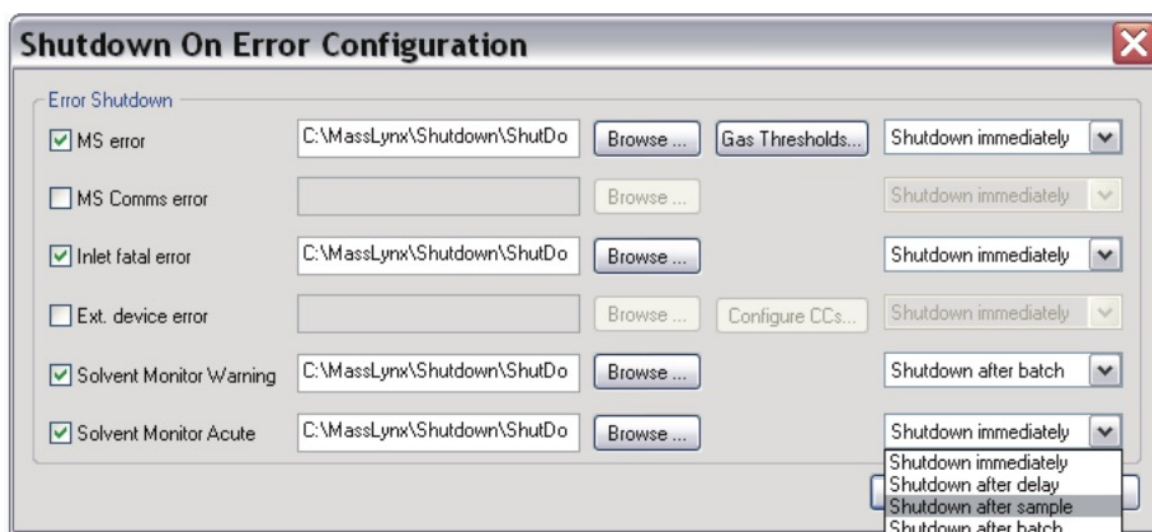
Add (l): 0.20

Final Volume (l): 0.4

Buttons: Cancel, Fill To Top, OK

Figure 4. The reservoir refill page for the makeup pump that has reached the acute warning level.

In addition to sending an email message, the software can also automatically initiate the shutdown process determined by the administrator.



**Shutdown On Error Configuration**

Error Shutdown

<input checked="" type="checkbox"/> MS error	C:\MassLynx\Shutdown\ShutDo	Browse ...	Gas Thresholds...	Shutdown immediately
<input type="checkbox"/> MS Comms error		Browse ...		Shutdown immediately
<input checked="" type="checkbox"/> Inlet fatal error	C:\MassLynx\Shutdown\ShutDo	Browse ...		Shutdown immediately
<input type="checkbox"/> Ext. device error		Browse ...	Configure CCs...	Shutdown immediately
<input checked="" type="checkbox"/> Solvent Monitor Warning	C:\MassLynx\Shutdown\ShutDo	Browse ...		Shutdown after batch
<input checked="" type="checkbox"/> Solvent Monitor Acute	C:\MassLynx\Shutdown\ShutDo	Browse ...		Shutdown immediately

Dropdown menu options: Shutdown immediately, Shutdown after delay, Shutdown after sample, Shutdown after batch

Figure 5. Shutdown can initiate "shutdown after batch" at the warning level and, "shutdown after injection" or "shutdown immediately" at the acute level.

The included Remote Status Monitor software tracks the sample queue, instrument and solvent status from any networked PC. This allows for greater efficiency as the user doesn't have to physically return to the system for status checks.

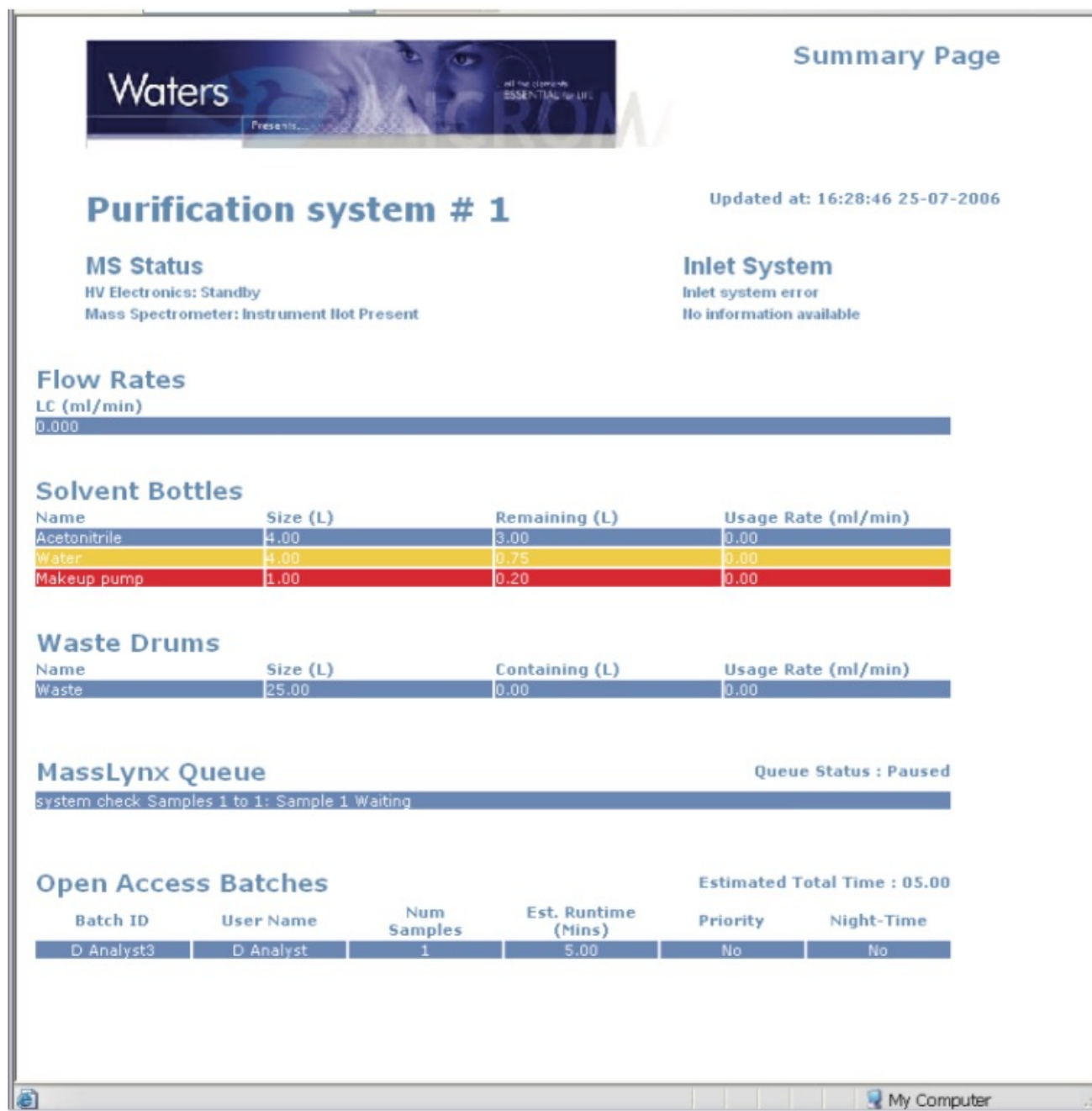


Figure 6. Remote Status Monitor provides users access to instrument status information remotely.

## Conclusion

Solvent and waste monitoring should be an integral part of any purification system. As demonstrated, real-time solvent and waste monitoring, and the ability to automatically implement corrective action can prevent costly interruptions and the loss of valuable samples.

## Featured Products

- [AutoPurification System <https://www.waters.com/10007147>](https://www.waters.com/10007147)
- [MassLynx MS Software <https://www.waters.com/513662>](https://www.waters.com/513662)

720001867, September 2005



© 2021 Waters Corporation. All Rights Reserved.