

Application Note

Quantitative Analysis of Acetylcholine Esterase Enzyme Inhibition Using DIOS-Tof MS

Daniel B. Wall, Jeffrey W. Finch, Steven A. Cohen

Waters Corporation

Abstract

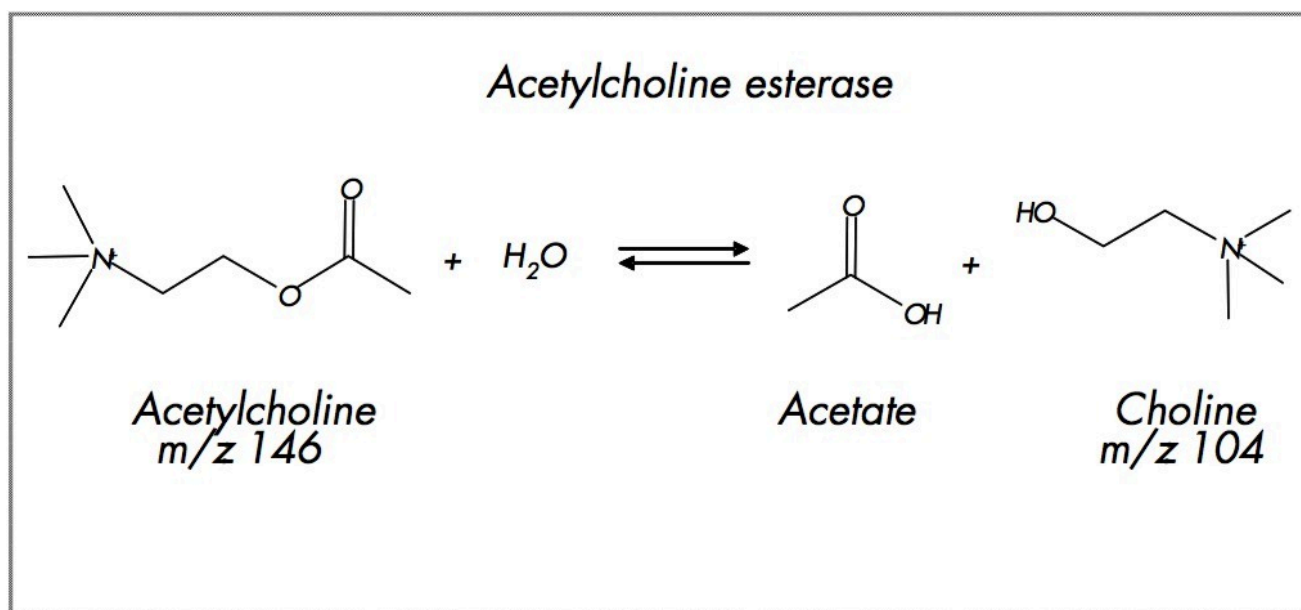
1. Determine the precision and accuracy of quantification of choline by DIOS-Tof MS and compare to LC-MS/MS
2. Measure the acetylcholine esterase K_m by DIOS-Tof MS
3. Find the IC₅₀ for tacrine inhibition of the acetylcholine esterase reaction
4. Compare the DIOS-Tof MS and LC-MS/MS methods for analysis of enzyme-inhibition reactions

Benefits

The DIOS-Tof MS method is shown to be a rapid, simple approach to relative quantification for enzyme-inhibition IC₅₀ assays

Introduction

The pharmaceutical industry analyzes enzyme inhibition reactions to determine the efficacy of a wide array of inhibitors. The ideal analytical technique for such work should be both quantitative and capable of a fast sample cycle time. A common example of enzyme-inhibition analysis is found in the case of Alzheimer's disease^{1,2} where acetylcholine esterase inhibitors have been shown to lessen the effects of the disease. Inhibitors have been tested using traditional methods including microtiter plate-based fluorescence assays,³ liquid chromatography (LC) mass spectrometry (MS)^{4,5} and LC with UV absorption or fluorescence detection.^{4,6} The fastest cycle times are achieved with the plate-based fluorescence assays though this method has limited analyte specificity. LC-MS-based approaches provide highly specific information but tend to have longer cycle times. Laser desorption based methods⁷⁻¹⁰ have been used extensively for small molecule quantification including the MALDI based methods^{7,9,11-16} and the matrix-free method of desorption/ionization on silicon (DIOS).^{8,10,17,18} These approaches offer the potential for rapid cycle time combined with mass selectivity. The DIOS-Tof MS method is used in this work to quantify the rate of production of the choline product of the acetylcholine esterase reaction in the presence of the inhibitor tacrine. The results are compared between the DIOS-based method and the standard LC-MS/MS approach.





DIOS-Tof MS with the Waters Micromass MassPREP DIOS-target Plate adds a new dimension to the capabilities of the Waters Micromass MALDI micro MX Time-of-Flight Mass Spectrometer.

Experimental

Sample Preparation

The enzyme reaction was typically run in 10mM ammonium bicarbonate and incubated at 37 °C. The enzyme activity was quenched at specific time points by addition of one volume of acetonitrile containing the choline internal standard (choline-d₉: 90 µM). This solution was either directly spotted onto the MassPREP DIOS-target Plate (0.4 µL per well) or diluted 10-fold with water prior to LC-MS/MS (25 µL per injection).

DIOS-Tof MS

96 well MassPREP DIOS-target Plates were analyzed using a Micromass MALDI-Tof MS instrument operating in reflectron mode.

LC-MS/MS

LC-MS/MS analyses were performed on a Waters Micromass Quattro micro equipped with an electrospray interface. The instrument was operated in MRM mode for detection of choline (104.1 → 59.8) and the internal standard, choline-d₉ (113.2 → 68.9).

LC Conditions

LC system:	Alliance HT 2795 XC Separations Module
Column:	Waters Atlantis dC ₁₈ 3 µm 2.1 x 100 mm
Flow rate:	600 µL/min. split to 150 µL/min. into MS
Injection volume:	25 µL
Gradient:	Isocratic at 70% A and 30% B over 2 min. where A = 0.1% Formic Acid in Water, and B = 0.1% Formic Acid in Acetonitrile

MS Conditions

MS system:	Micromass Quattro micro
------------	-------------------------

Ion mode:	Positive
Cone voltage:	30 V
Desolvation temp.:	250 °C
Source temp.:	120 °C
Collision energy:	18 V
Detection mode:	MRM
Dwell:	80 ms
Collision gas:	Argon, 2e ⁻³ Torr

Results and Discussion

Enzyme Kinetics

Two critical parameters in the study of enzyme-inhibition reactions are the Michaelis constant (K_m) and the fifty percent inhibition constant (IC₅₀). The K_m is the substrate concentration at which the reaction occurs at half of the maximum rate and is an indicator of the affinity that an enzyme has for a given substrate. The IC₅₀ is the concentration of inhibitor that reduces the enzyme reaction's initial velocity by half and is a measure of an inhibitor's efficacy.

DIOS-Tof MS Quantification of Choline

The standard calibration curve for choline is shown in Figure 1. The linear dynamic range extends from 5.0 to 500.0 μ M (3.8% RSD, $R^2 = 0.9976$). Examples of the DIOS-Tof MS spectra are shown in Figure 2 for 100.0, 50.0, 20.0, 10.0, and 0.0 μ M concentrations of choline. Data were acquired by randomly sampling the target with the

nitrogen laser and the final mass spectra were composed of 150 summed shots. The quantification was based on the MS peak intensity ratio of choline to choline-d₉.

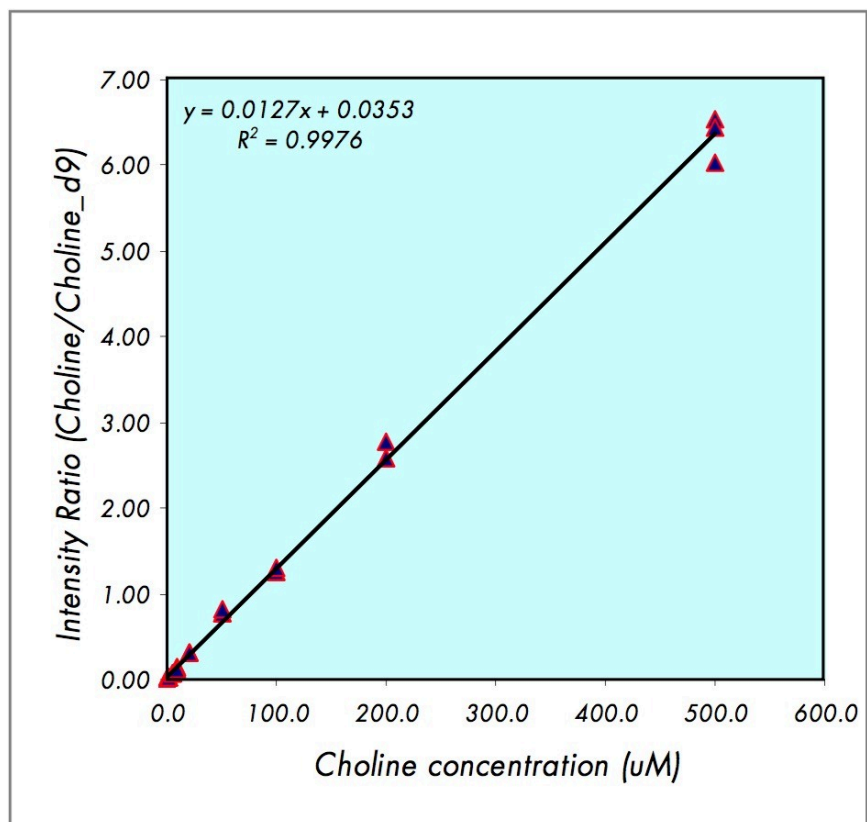


Figure 1. DIOS-Tof MS standard calibration curve for choline quantification (intensity ratio of choline to the internal standard choline-d₉ with the concentration of choline).

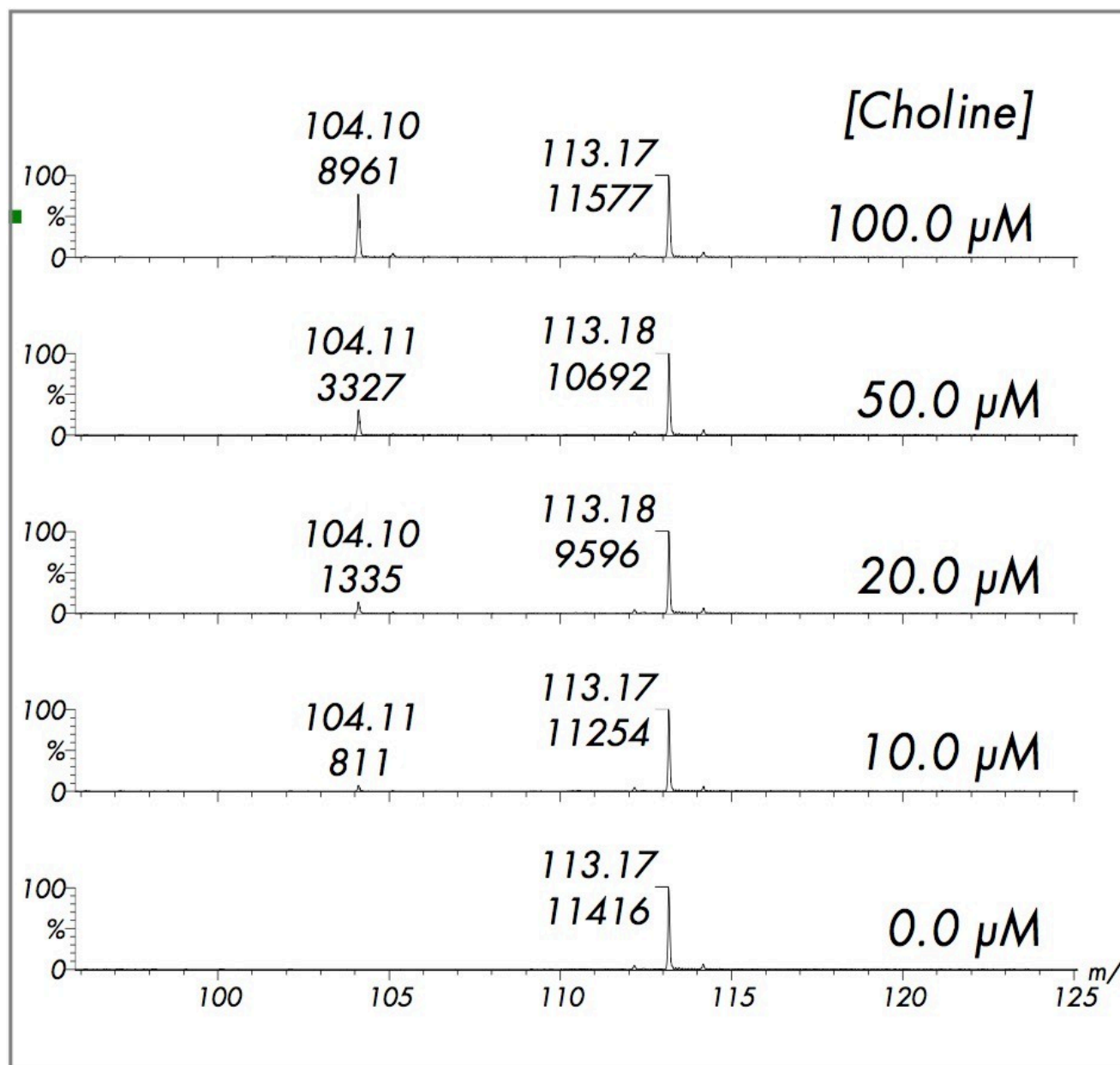


Figure 2. Examples of DIOS-Tof MS spectra showing choline (m/z 104) from 100.0 μM to 0.0 μM with the internal standard choline- d_9 (m/z 113) held at 90.0 μM .

LC-MS/MS Quantification of Choline

The standard calibration curve for choline using LC-MS/MS extended from 1.0 μM to 500.0 μM (%RSD 1.6%, $R^2 = 0.999$). The LC-MS/MS method performs better than the DIOS-Tof MS method in terms of linear dynamic range,

%RSD and linear regression; however both methods are quantitative, and provide a means of assaying the acetylcholine esterase reaction.

Michaelis Constant (K_m)

Where V_0 is the initial linear velocity of the reaction and $[S]$ is the concentration of substrate, a plot of $1/V_0$ vs. $1/[S]$ generates a Lineweaver-Burk plot and a linear regression fit to this data is then used to estimate the K_m (Figure 3) at the x-intercept.

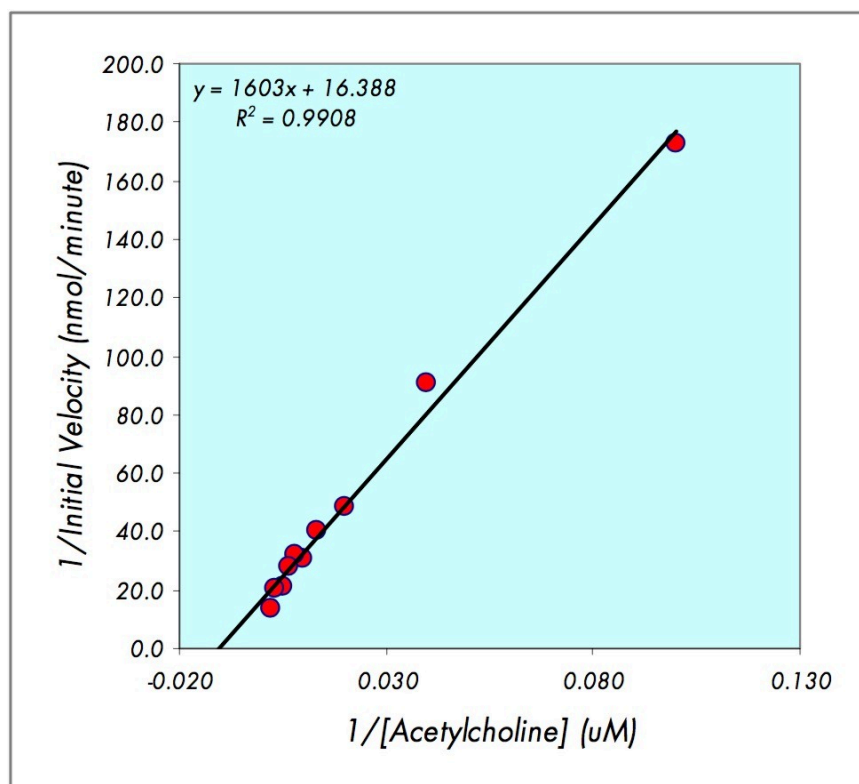


Figure 3. Lineweaver-Burk plot for acetylcholine esterase as determined from the DIOS-Tof MS data. This plot shows the reciprocal of the initial velocity (V_0) vs. the reciprocal of the concentration of the substrate $[S]$, acetylcholine. The Michaelis constant ($K_m = -1/x$ intercept) is calculated to be 97.8 μM from this plot.

Fifty Percent Inhibition Constant (IC₅₀) for Tacrine

With the acetylcholine concentration held at the Michaelis constant the reaction was run in the presence of the inhibitor tacrine at the following concentrations: 0.0, 0.1, 0.2, 0.5, 1.0, 2.0, 5.0, 10.0, 20.0, 50.0, 100.0, 200.0, 500.0, 1000.0, 2000.0, 5000.0, and 10000.0 nM. After quenching the reaction at thirty minutes the concentration of choline was determined. The plot of the concentration of choline vs. the log of the concentration of tacrine is shown in Figure 4 for DIOS-Tof MS and LC-MS/MS. The data clearly show a trend from no inhibition at low concentrations of tacrine to one hundred percent inhibition at high concentrations of tacrine. The midpoint between these two levels represents the fifty percent inhibition level and is used to calculate the IC₅₀.

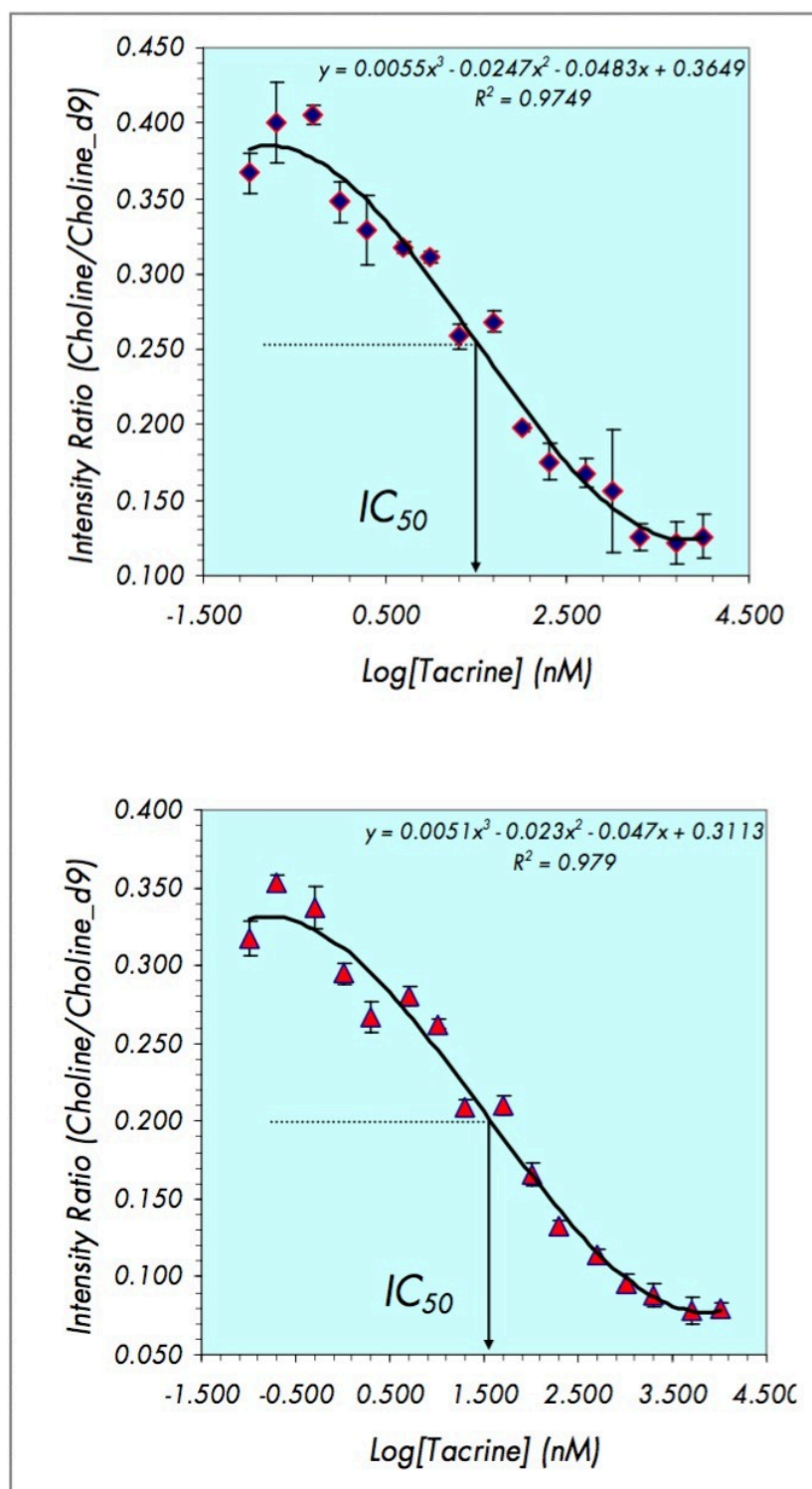


Figure 4. Calculation of the IC_{50} constant. The DIOS-ToF MS method (top) gives an IC_{50} of 32.0 nM while the LC-

MS/MS method (bottom) gives an IC_{50} of 31.8 nM (reported IC_{50} = 30 nM)

With a third order polynomial fit to this data the concentration of inhibitor required for fifty percent inhibition of the enzyme, (IC_{50}) can be estimated (Figure 4). The DIOS-Tof MS approach yielded a calculated IC_{50} of 32.0 +/- 0.2 nM while the LC-MS/MS method gave an IC_{50} of 31.8 +/- 0.1 nM. The reported IC_{50} value is 30.0 nM.¹ The DIOS-Tof MS and LC-MS/MS methods both result in IC_{50} values close to the reported value, demonstrating that DIOS is an effective technique for determining IC_{50} calculations.

Conclusion

- The DIOS-Tof MS method is shown to be a rapid, simple approach to relative quantification for enzyme-inhibition IC_{50} assays
- The linear dynamic range for choline, using DIOS-Tof MS, is from 5.0 to 500.0 μ M ($R^2 = 0.998$) with an average relative standard deviation of 3.8%. Using LC-MS/MS, the linear dynamic range for choline is at least from 1.0 to 500.0 μ M choline ($R^2 = 0.999$) with an average relative standard deviation of 1.6%
- IC_{50} values for tacrine were found to be 32.0 nM by DIOS-Tof MS and 31.8 nM by LC-MS/MS. Both are close to the reported value of 30.0 nM
- Sample cycle time using DIOS-Tof MS was 40 seconds while that for LC-MS/MS was 2.1 minutes
- The high throughput capabilities demonstrated by the DIOS-Tof MS technique may be applied to various screening applications where rapid, semi-quantitative results are desired

Further reading for complete experimental details

Wall, D, Finch J, Cohen C. Comparison of Desorption/Ionization on Silicon (DIOS) Time-of-Flight and Liquid Chromatography Tandem Mass Spectrometry for Assaying Enzyme-Inhibition Reactions. *Rapid Commun. Mass Spectrom.* 2004; in press.

References

1. Costagli C, Galli A. *Biochem. Pharmacol.* 1998; 55: 1733-1737.
2. Kurz A. J. Neural Transm. *Suppl.* 1998; 54: 295-299.
3. Crespi C, Miller V, Penman B. *Anal. Biochem.* 1997; 248: 188.
4. Ayrton J, Plumb R, Leavens W, Mallet D, Dickens M, Dear G. *Rapid Commun. Mass Spectrom.* 1998; 12: 217.
5. Ayrton J, Dear G, Leavens W, Mallet D, Plumb R. *Rapid Commun. Mass Spectrom.* 1997; 11: 1953.
6. Masimirembwa C, Otter C, Berg M, Jonsson M, Leidvik B, Jonsson E, Johansson T, Backman A, Edlund A, Andersson T. *Drug Metab. Dispos.* 1999; 21: 1117.
7. Hatsis P, Brombacher S, Corr J, Kovarik P, Volmer D. *Rapid Commun. Mass Spectrom.* 2003; 17: 2303-2309.
8. Go E, Shen Z, Harris K, Siuzdak G. *Anal. Chem.* 2003; 75: 5475-5479.
9. Cohen L, Gusev A. *Anal. Bioanal. Chem.* 2002; 373: 571-586.
10. Huikko K, Ostman P, Sauber C, Mandel F, Grigoras K, Franssila S, Kotiaho T, Kostianen R. *Rapid Commun. Mass Spectrom.* 2003; 17: 1339-1343.
11. Kang M, Tholey A, Heinzle E. *Rapid Commun. Mass Spectrom.* 2000; 14: 1972-1978.
12. Mims D, Hercules D. *Anal. Bioanal. Chem.* 2004; EPub.: 1618-2650.
13. Grant G, Frison S, Yeung J, Vasanthan T, Sporns P. *J. Agric. Food Chem.* 2003; 51: 6137-6144.
14. Frison-Norrie S, Sporns P. *J. Agric. Food Chem.* 2002; 50: 2782-2787.
15. Wang J, Sporns P. *J. Agric. Food Chem.* 1999; 47: 2009-2015.
16. Bucknall M, Fung K, Duncan M. *J. Am. Soc. Mass Spectrom.* 2002; 13: 1015-1027.
17. Lewis W, Shen Z, Finn M, Siuzdak G. *Int. J. Mass Spectrom.* 2003; 226: 107.
18. Thomas J, Shen Z, Crowel J, Finn M, Siuzdak G. *PNAS* 2001; 98: 4932-4937.

19. Al-Jafari A, Kamal M, Alhominida A. *J. Biochem. Mol. Toxicol.* 1998; 12: 245-251.

20. Alhomida A, Al-Rajhi A, Kamal M, Al-Jafari A. *Toxicology* 2000; 147: 33-39.

Featured Products

Alliance HPLC <<https://www.waters.com/514248>>

WA40488, November 2004

© 2022 Waters Corporation. All Rights Reserved.