

Application Note

Profens, Isocratic – 4.6 x 20 mm Intelligent Speed Separation Columns

Waters Corporation



This is an Application Brief and does not contain a detailed Experimental section.

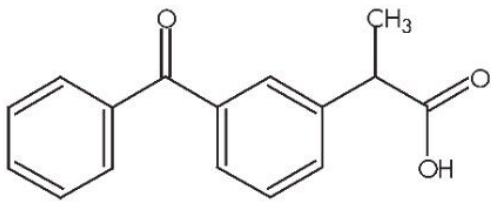
Abstract

This application brief demonstrates analysis of Profens.

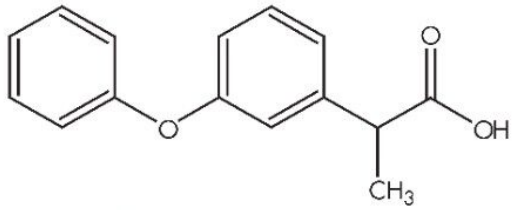
Introduction

The compounds analyzed in this study are:

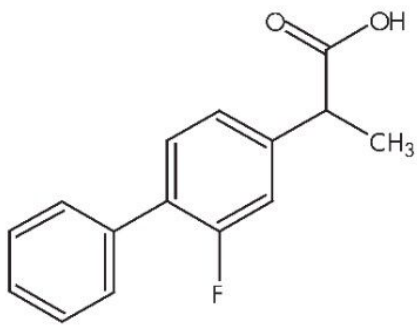
1. Ketoprofen
2. Fenoprofen
3. Flurbiprofen
4. Ibuprofen



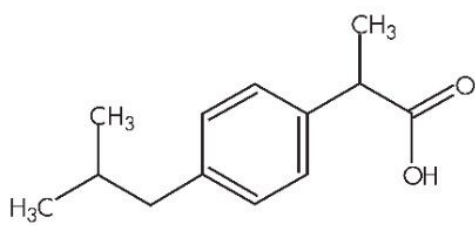
Ketoprofen



Fenoprofen



Flurbiprofen



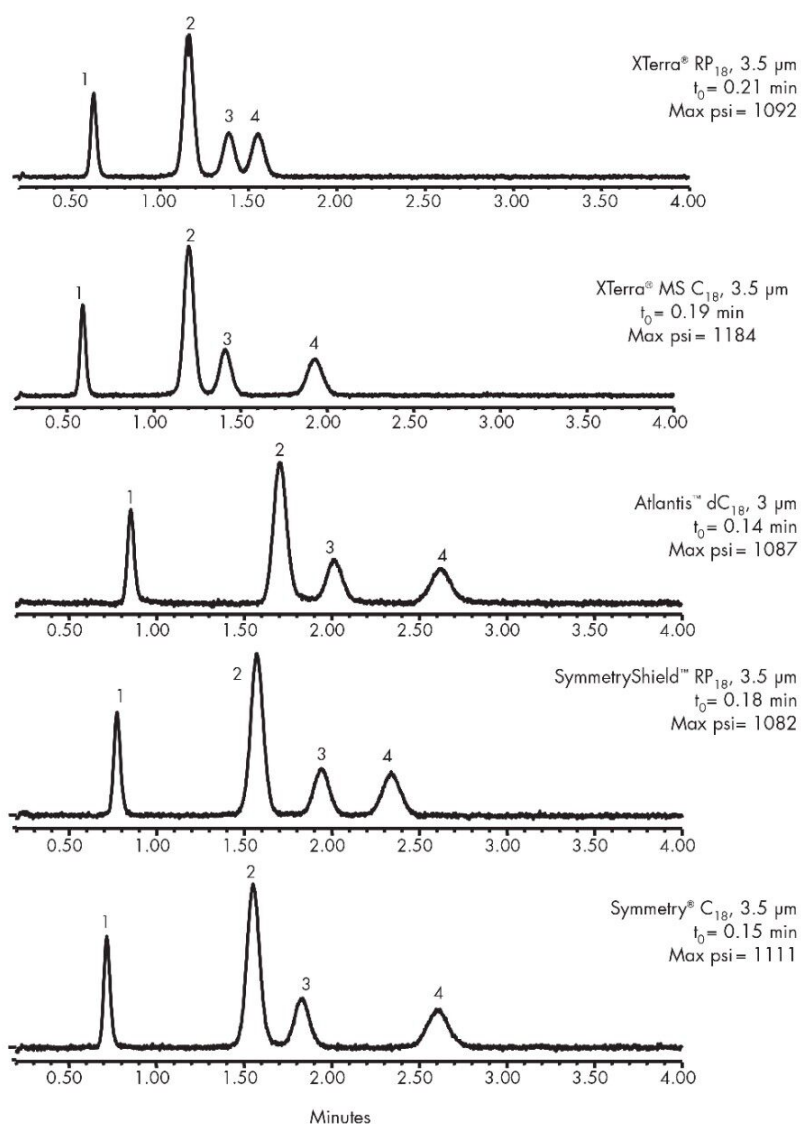
Ibuprofen

Experimental

Conditions

Columns:	XTerra RP ₁₈ , 4.6 x 20 mm IS, 3.5 µm, (P/N:186001893) XTerra MS C ₁₈ , 4.6 x 20 mm IS, 3.5 µm, (P/N:186001891) Atlantis dC ₁₈ , 4.6 x 20 mm IS 3 µm, (P/N:186002062) Symmetry Shield RP ₁₈ , 4.6 x 20 mm IS, 3.5 µm, (P/N:186002092) Symmetry C ₁₈ , 4.6 x 20 mm IS, 3.5 µm, (P/N:186002090)
Mobile phase A:	0.1% HCOOH in Water
Mobile phase B:	0.1% HCOOH in Acetonitrile
Flow rate:	3.0 mL/min
Isocratic mobile phase conditions:	65% A, 35% B
Injection volume:	10 µL
Sample concentration:	20 µg/mL
Temperature:	30 °C
Detection:	UV @ 220 nm
Instrument:	Alliance 2695 with 996 PDA

Results and Discussion



Featured Products

Alliance HPLC System <<https://www.waters.com/534293>>

2998 Photodiode Array (PDA) Detector <<https://www.waters.com/1001362>>

WA31787.26, June 2003

