

Nota applicativa

Anilines, pH 10.0 – 3.0 x 20 mm Intelligent Speed Separation

Waters Corporation

This is an Application Brief and does not contain a detailed Experimental section.

Abstract

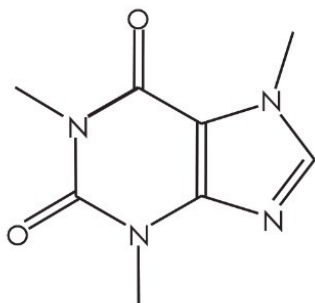
This application brief demonstrates analysis of anilines using XTerra Columns.

Introduction

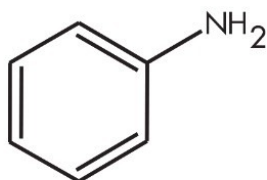
The compounds analyzed in this study are:

1. Caffeine
 2. Aniline
 3. N-Methylaniline
 4. 2-Ethylaniline
 5. 4-Nitroanisole
-

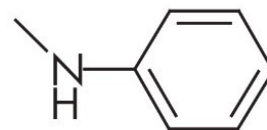
6. N,N-Dimethylaniline



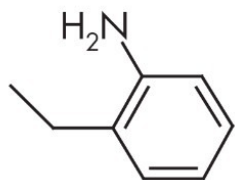
Caffeine



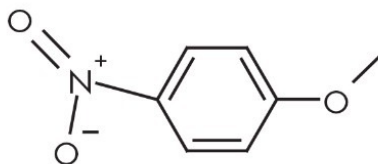
Aniline



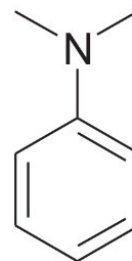
N-Methylaniline



2-Ethylaniline



4-Nitroanisole



N,N-Dimethylaniline

Experimental

Conditions

Column: XTerra MS C₁₈, 3.0 x 20 mm IS, 3.5 μm, (P/N: 186001974)

Mobile phase A: Water

Mobile phase B: Acetonitrile

Mobile phase C: 100 mM NH_4HCO_3 , pH 10

Flow rate: 2.0 mL/min

Injection volume: 5.0 μL

Sample concentration: 20 $\mu\text{g/mL}$

Temperature: 30 °C

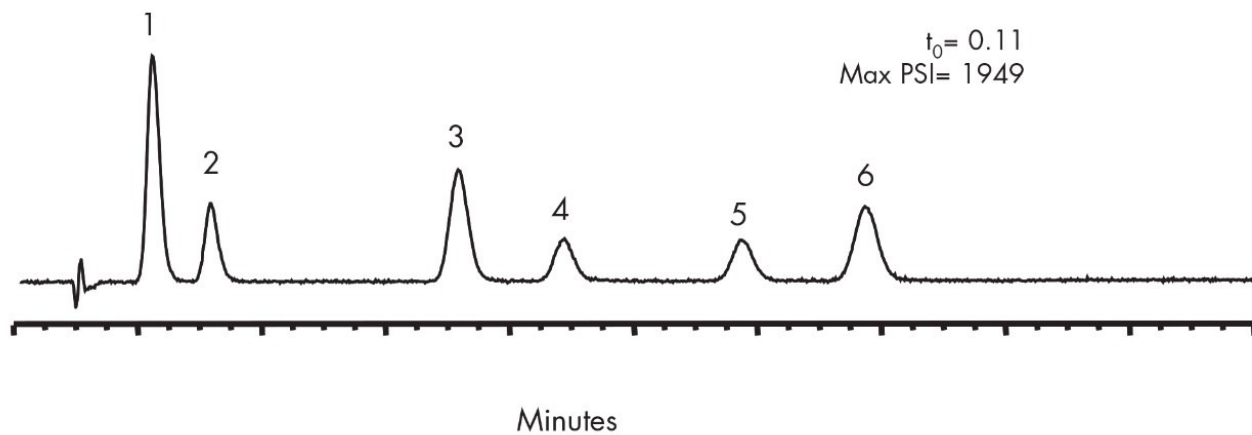
Detection: UV @ 254 nm

Instrument: Alliance 2695 with 2996 PDA

Gradient

Time (min)	Profile		
	%A	%B	%C
0.0	80	10	10
2.0	50	40	10
2.2	80	10	10
3.0	80	10	10

Results and Discussion



Featured Products

Alliance HPLC System <<https://www.waters.com/534293>>

WA31787.11, June 2003

© 2022 Waters Corporation. All Rights Reserved.