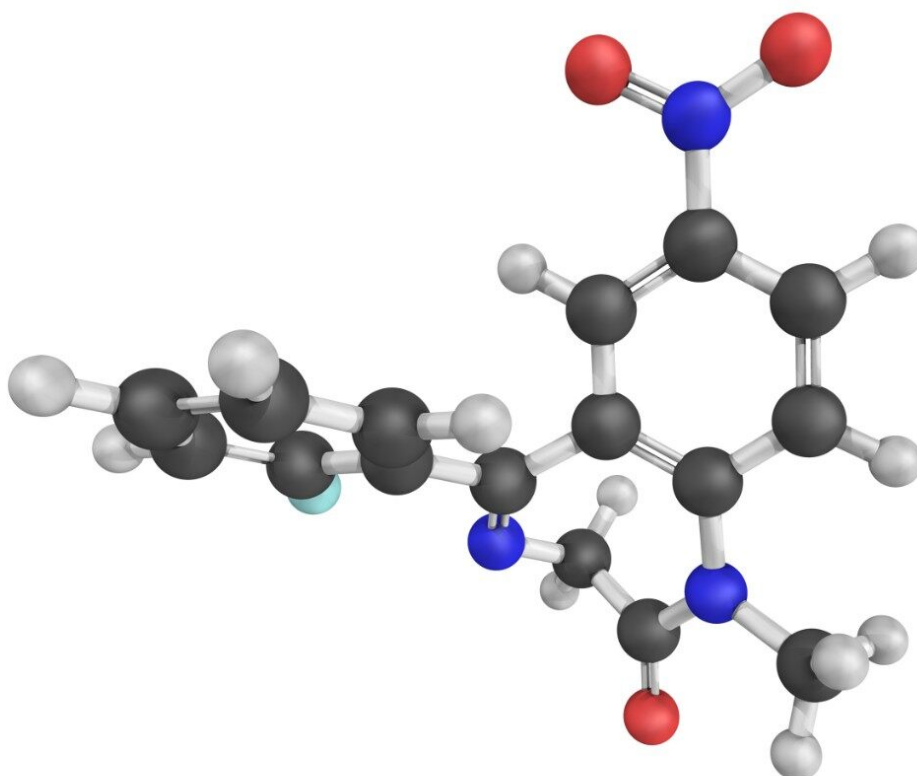


Flunitrazepam (Rohypnol)

Waters Corporation



This is an Application Brief and does not contain a detailed Experimental section.

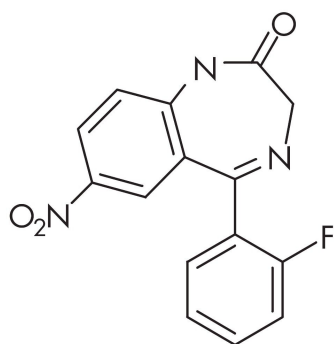
Abstract

This application brief details on analysis of flunitrazepam.

Introduction

The compounds analyzed in this study are:

1. 7-Amino Nitrazepam
2. 7-Amino Clonazepam
3. 7-Amino Flunitrazepam
4. Nitrazepam
5. Clonazepam
6. Flunitrazepam



FLUNITRAZEPAM

Experimental

HPLC Conditions

Column:	Symmetry Shield RP8, 3.9 x 150 mm, 5 µm
Part number:	WAT200655
Mobile phase:	Water/Acetonitrile 70:30

Flow rate: 1.5 mL/min

Injection volume: 100 µL

Temperature: Ambient

Detection: UV @ 220 nm

OASIS® HLB EXTRACTION METHOD

Oasis® HLB Extraction Plate, 30 mg 96-well

Part Number WAT058951

CONDITION:

1 mL methanol

EQUILIBRATE:

1 mL water

LOAD:

250 μ L

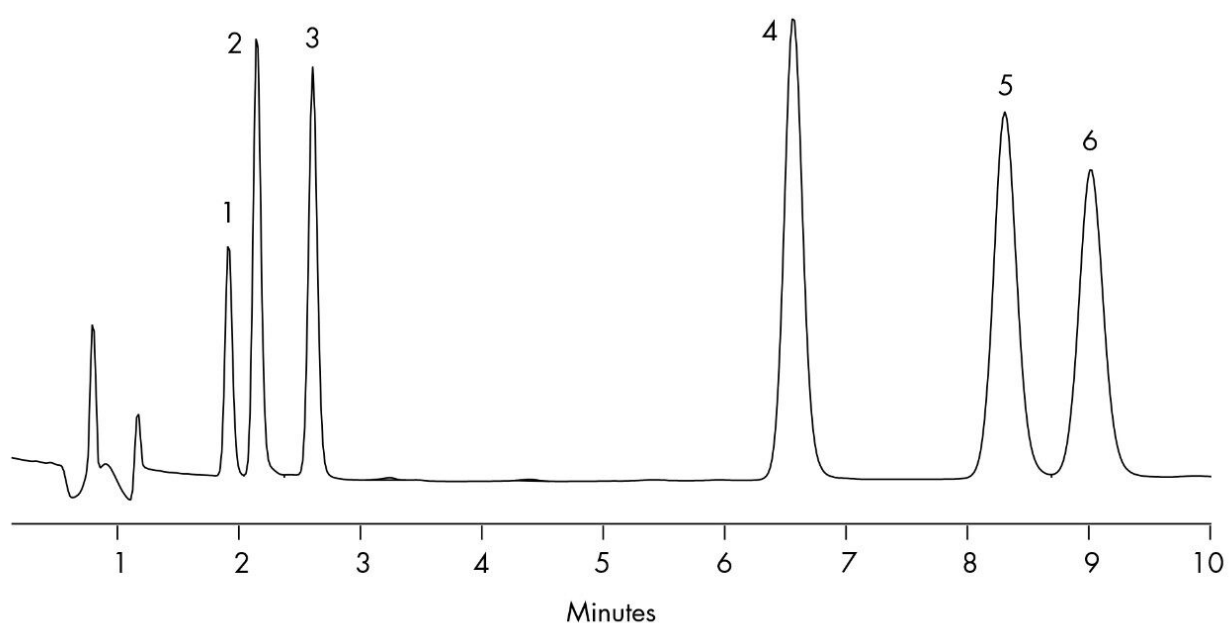
WASH:

1 mL, 10% methanol with acetic acid

ELUTE: 1 mL, 40% methanol with
ammonium hydroxide

Results and Discussion

Compound	% Recovery
7-Amino Nitrazepam	118
7-Amino Clonazepam	100
7-Amino Flunitrazepam	95.9
Nitrazepam	93.7
Clonazepam	101
Flunitrazepam	85.9



Featured Products

WA31764.84, June 2003

© 2021 Waters Corporation. All Rights Reserved.