

Nota applicativa

## Desalting of Peptide Mixture Prior to ESI-MS Analysis

---

Waters Corporation

This is an Application Brief and does not contain a detailed Experimental section.

---

### Abstract

This application brief highlights the analysis of peptide mixture.

---

### Introduction

---

# NEW! OASIS<sup>®</sup> $\mu$ ELUTION PLATE



---

## Experimental

### EST-MS Conditions

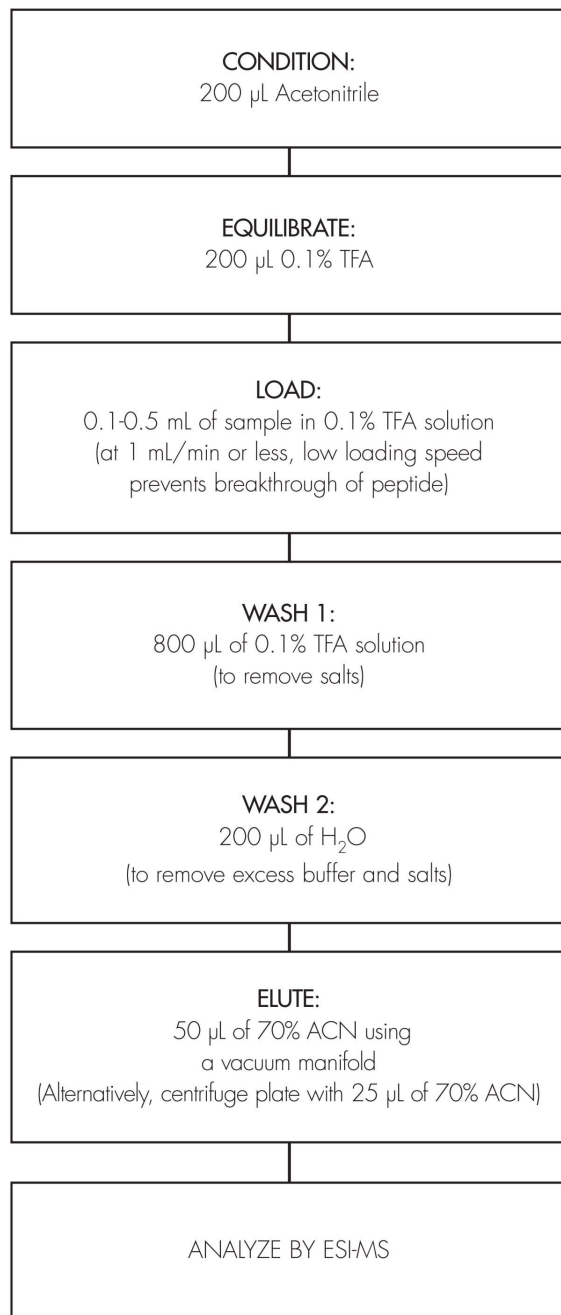
Waters Micromass LCT System

Capillary voltage:	2.8 kV
Sample cone voltage:	35 V
Extraction cone voltage:	5 V
Gas flow:	520 and 310 L/h

Peptide mixture prepared by digestion of Cytochrome c by trypsin in 20 mM trisglycine buffer.

## OASIS® HLB 96-WELL $\mu$ ELUTION PLATE

Part Number 186001828BA



*Reference:* M. Gilar, A. Belenky, B. H. Wang, J. Chromatog. A, 921 (2001) 3-13

---

## References

1. M. Gilar, A. Belenky, B. H. Wang, *J. Chromatog. A*, 921 (2001) 3–13.

---

## Featured Products

WA31764.66, June 2003

© 2022 Waters Corporation. All Rights Reserved.