

## Clemastine in Rat Plasma- Oasis On-Line 2 Column Parallel Approach

---

Waters Corporation

This is an Application Brief and does not contain a detailed Experimental section.

---

### Abstract

This application brief highlights about the analysis of clemastine in rat plasma.

---

### Introduction

The compound analyzed in this study was clemastine

---

### Experimental

#### HPLC Condition

LC<sub>1</sub>:

Alliance 2790-0.4 mL/min

---

LC <sub>2</sub> :	Waters 515–4.0 mL/min
Loading mobile phase:	100% Water
Eluting mobile phase:	1 min gradient 5% ACN to 95% ACN
Loading mobile phase additive:	0.5% Formic Acid or NH <sub>4</sub> OH
Extraction column temp.:	40 °C
Switching valve:	Rheodyne LabPro 10 ports, 2 position

## MS Condition

MS:	Quatro UltimaTriple Quadrupole
Source:	Electrospray positive
Source temperature:	150°C
Desolvation gas:	600L/hr
Gas cell:	1.5e <sup>-3</sup> mbar
Cone voltage:	20 volts
Collision energy:	20

Time	HPLC gradient flow 0.4 mL/min		Valve position
	A	B	Function
0.0	5	9.5	switch 2-position 1 to 2 (elution)
0.5			switch 3-position 2 to 1 (loading)
1.0	95	5	
1.7	95	5	
2.0	5	95	switch 2-position 2 to 1
			switch 3-position 1 to 2
			switch 1-position 1 to 2

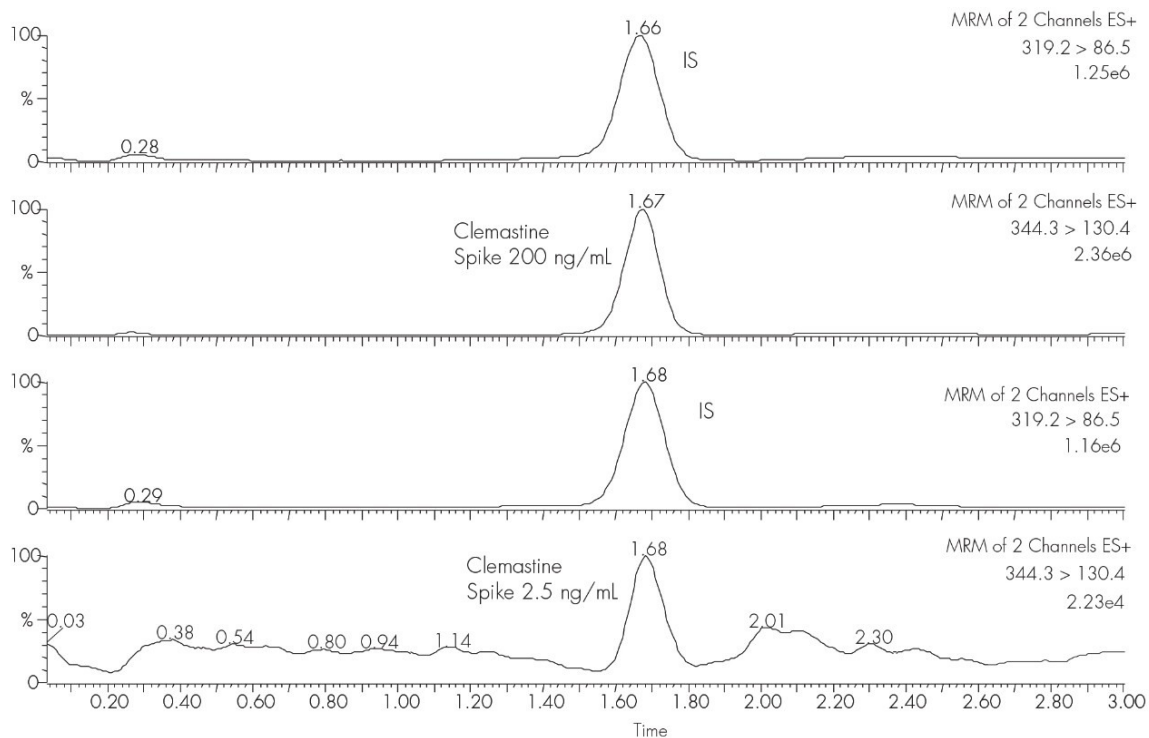
A - Acetonitrile + 0.5% formic acid or 0.5%  $\text{NH}_4\text{OH}$

B - Water + 0.5% formic acid or 0.5%  $\text{NH}_4\text{OH}$

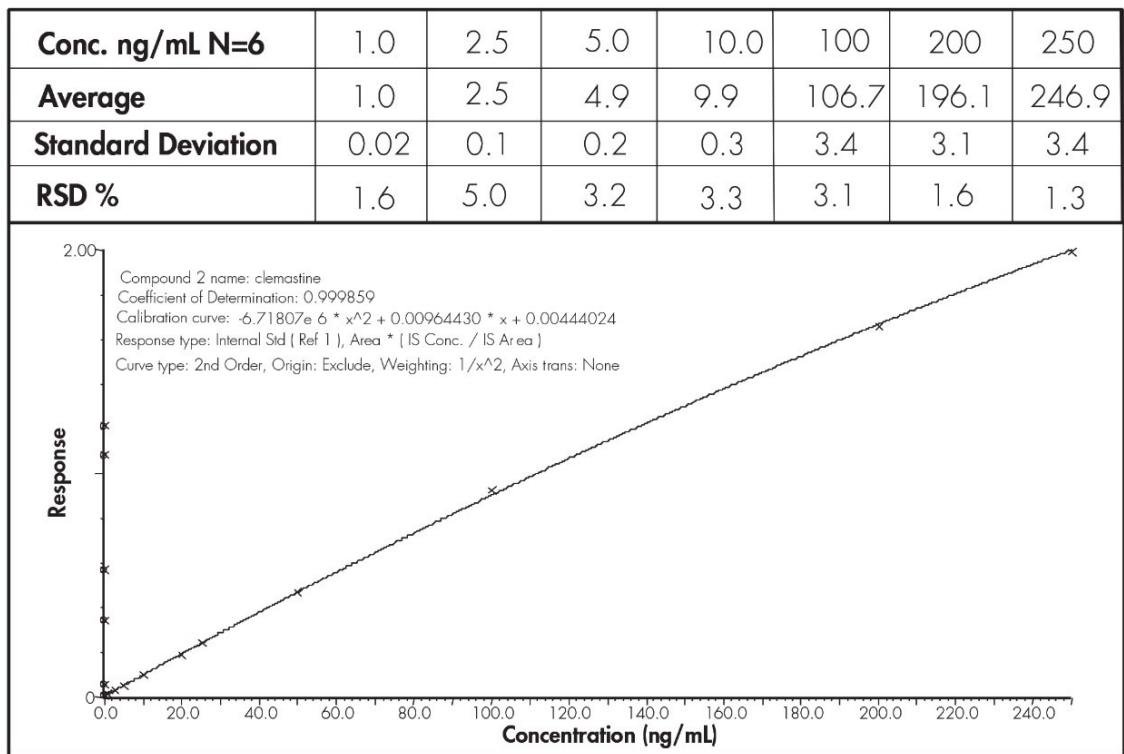
---

## Results and Discussion

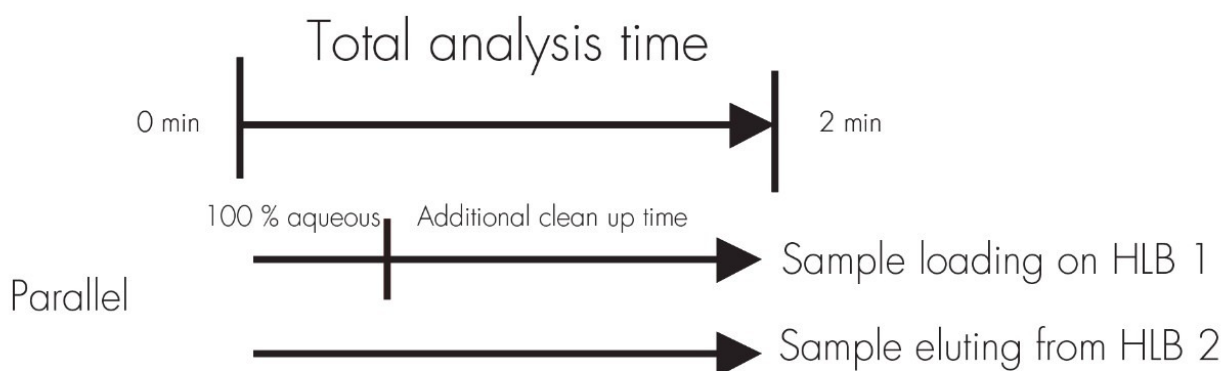
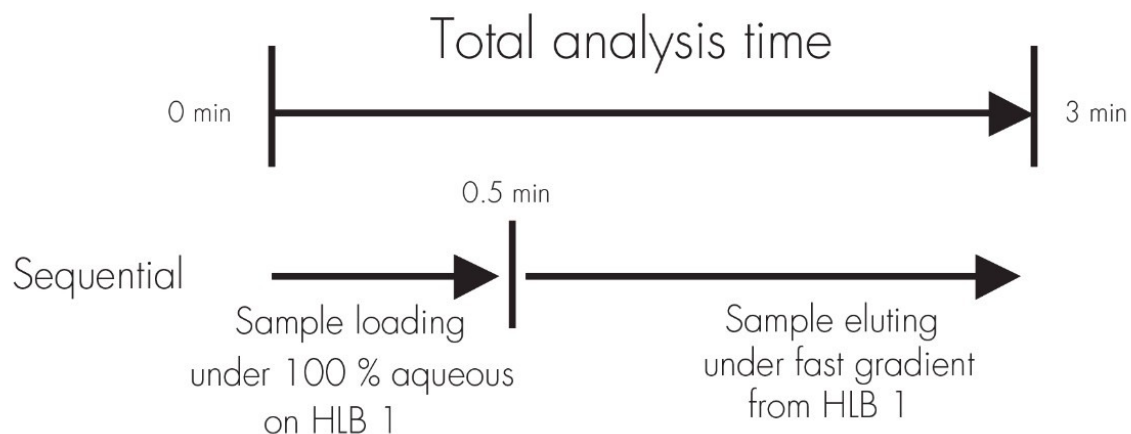
# LOQ CHROMATOGRAM



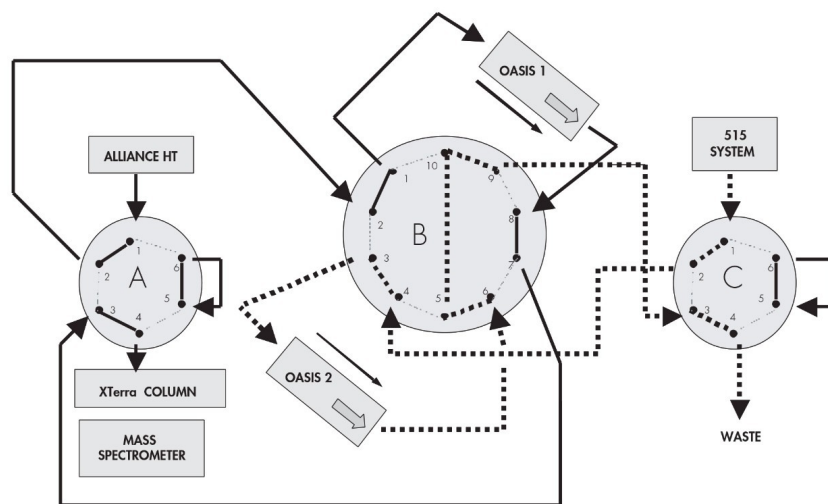
# CALIBRATION CURVE



## SEQUENTIAL VS. PARALLEL



## PARALLEL ON-LINE ANALYSIS



---

## Featured Products

Alliance HPLC System <<https://www.waters.com/534293>>

WA31764.60, June 2003

© 2022 Waters Corporation. All Rights Reserved.