

## Amitrole in River Water

---

Waters Corporation

This is an Application Brief and does not contain a detailed Experimental section.

---

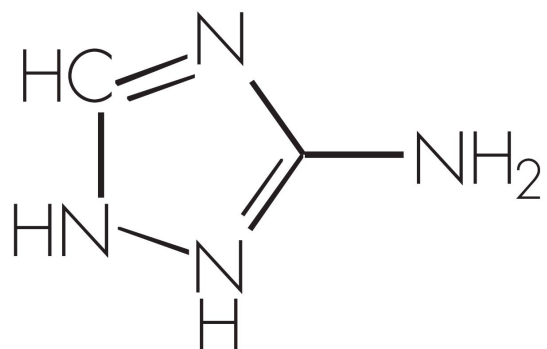
### Abstract

This application brief demonstrates analysis of amitrole in river water.

---

### Introduction

The compound analyzed in this study is amitrole.



AMITROLE

---

## Experimental

### LC Conditions

Column:	Waters Spherisorb Silica, 2 x 100 mm, 3 µm
Part number:	PSS832022
Mobile phase A:	Acetonitrile
Mobile phase B:	0.05% phosphoric acid
Flow rate:	200 µL/min
Instrument:	Alliance 2695 Separations Module

### Gradient

Time (min)	Profile	
	%A	%B
0	100	0
5	0	100

### MS Conditions

MS instrument:	Micromass ZQ
----------------	--------------

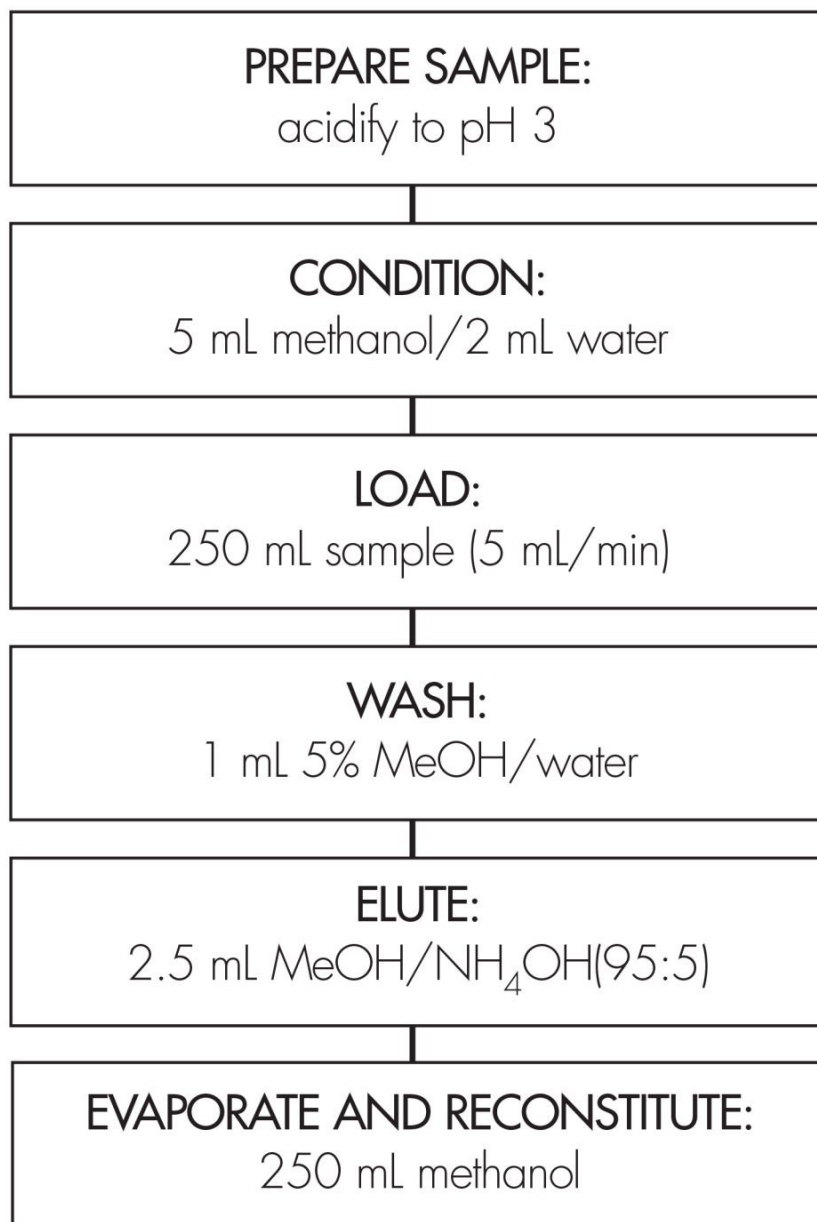
---

Ion source:	ESI+
Mode:	Multiple selected-ion recording
Source temp.:	150 °C
Desolvation temp.:	450 °C
Drying gas:	500 L/hr
Cone:	50 V

## OASIS<sup>®</sup> MCX EXTRACTION METHOD

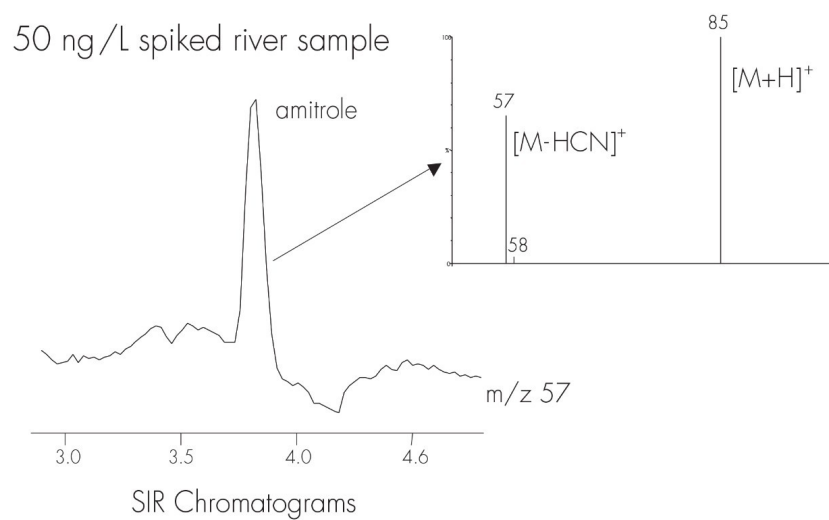
Oasis<sup>®</sup> MCX Extraction Cartridge, 6 cc/150 mg (LP)

Part Number: 186000255



---

## Results and Discussion



1 Calculated against standard prepared in matrix. Matrix suppression was approximately 10%

---

## Featured Products

WA31764.41, June 2003

© 2022 Waters Corporation. All Rights Reserved.