

Amitrole in River Water

Waters Corporation

This is an Application Brief and does not contain a detailed Experimental section.

Abstract

This application brief demonstrates analysis of amitrole in river water.

Introduction

The compound analyzed in this study is amitrole.

Experimental

LC Conditions

Column: Waters Spherisorb Silica, 2 x 100 mm, 3 μ m

Part number: PSS832022

Mobile phase A: Acetonitrile

Mobile phase B: 0.05% phosphoric acid

Flow rate: 200 µL/min

Instrument: Alliance 2695 Separations Module

Gradient

| Time (min) | Profile | |
|---------------|---------|-----|
| | %A | %B |
| 0 | 100 | 0 |
| 5 | 0 | 100 |

MS Conditions

MS instrument: Micromass ZQ

Ion source: ESI+

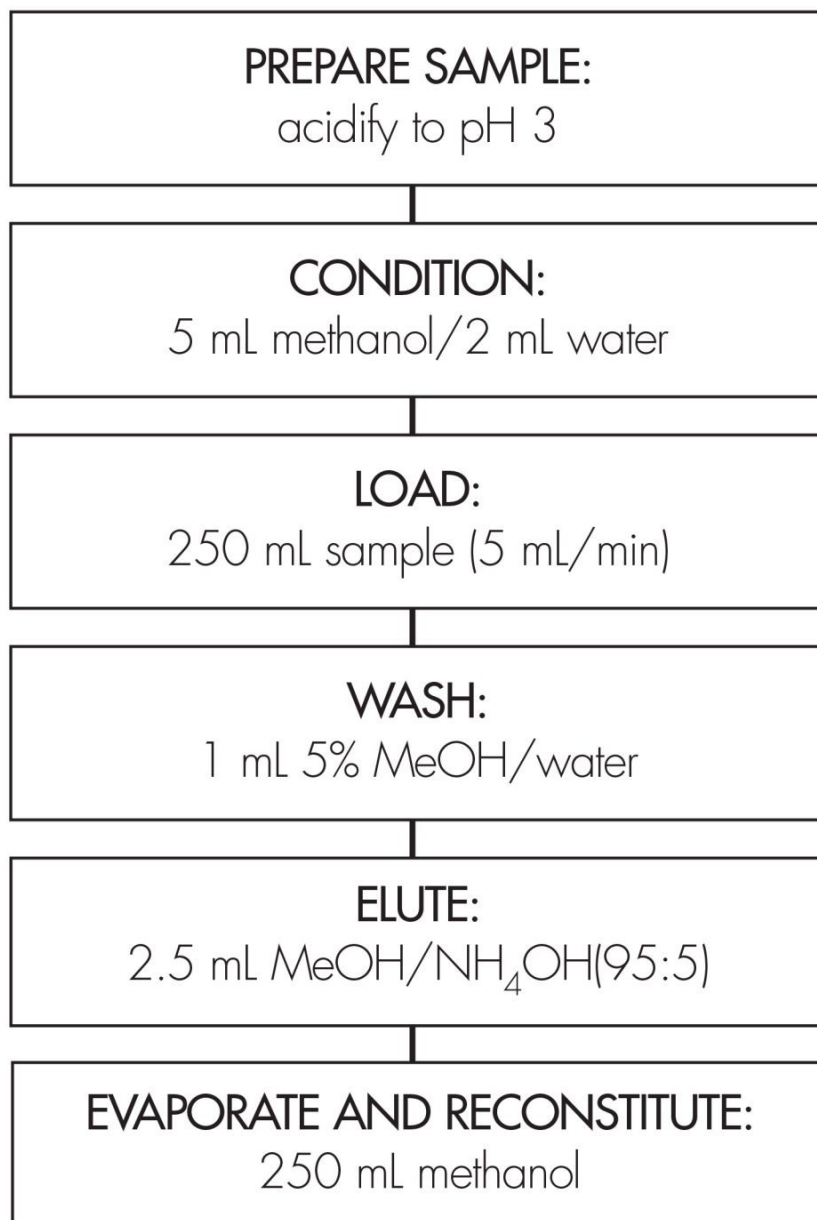
Mode: Multiple selected-ion recording

| | |
|--------------------|----------|
| Source temp.: | 150 °C |
| Desolvation temp.: | 450 °C |
| Drying gas: | 500 L/hr |
| Cone: | 50 V |

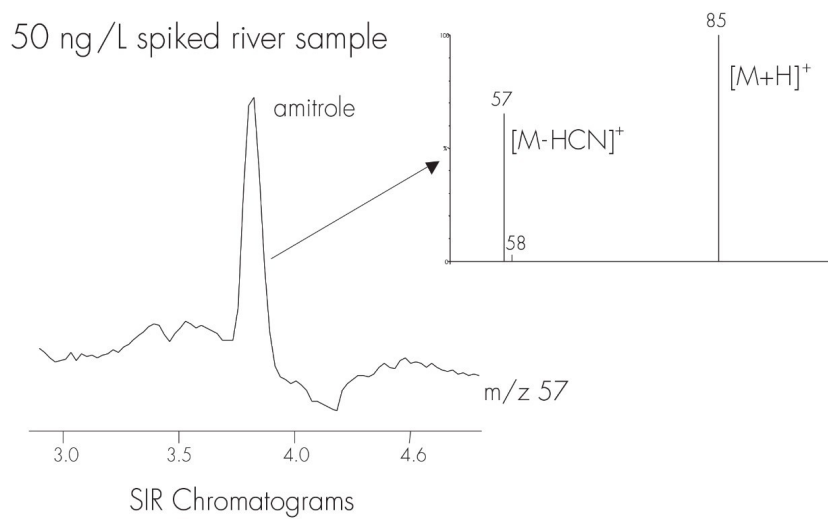
OASIS® MCX EXTRACTION METHOD

Oasis® MCX Extraction Cartridge, 6 cc/150 mg (LP)

Part Number: 186000255



Results and Discussion



1 Calculated against standard prepared in matrix. Matrix suppression was approximately 10%

Featured Products

WA31764.41, June 2003

© 2022 Waters Corporation. All Rights Reserved.
