

## Application Note

# Amitrole in River Water

---

Waters Corporation

This is an Application Brief and does not contain a detailed Experimental section.

---

## Abstract

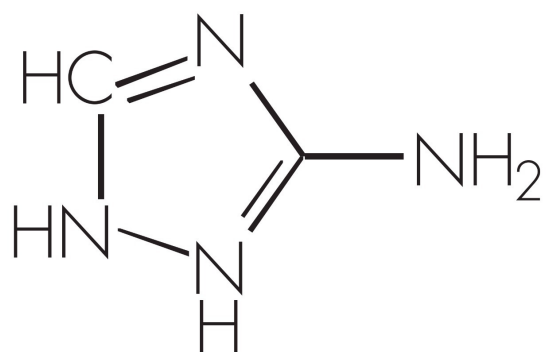
This application brief demonstrates analysis of amitrole in river water.

---

## Introduction

The compound analyzed in this study is amitrole.

---



## AMITROLE

---

### Experimental

#### LC Conditions

Column:	Waters Spherisorb Silica, 2 x 100 mm, 3 µm
Part number:	PSS832022
Mobile phase A:	Acetonitrile
Mobile phase B:	0.05% phosphoric acid
Flow rate:	200 µL/min
Instrument:	Alliance 2695 Separations Module

## Gradient

Time (min)	Profile	
	%A	%B
0	100	0
5	0	100

## MS Conditions

MS instrument:	Micromass ZQ
Ion source:	ESI+
Mode:	Multiple selected-ion recording
Source temp.:	150 °C
Desolvation temp.:	450 °C
Drying gas:	500 L/hr
Cone:	50 V

## OASIS® MCX EXTRACTION METHOD

Oasis® MCX Extraction Cartridge, 6 cc/150 mg (LP)

Part Number: 186000255

### PREPARE SAMPLE:

acidify to pH 3

### CONDITION:

5 mL methanol/2 mL water

### LOAD:

250 mL sample (5 mL/min)

### WASH:

1 mL 5% MeOH/water

### ELUTE:

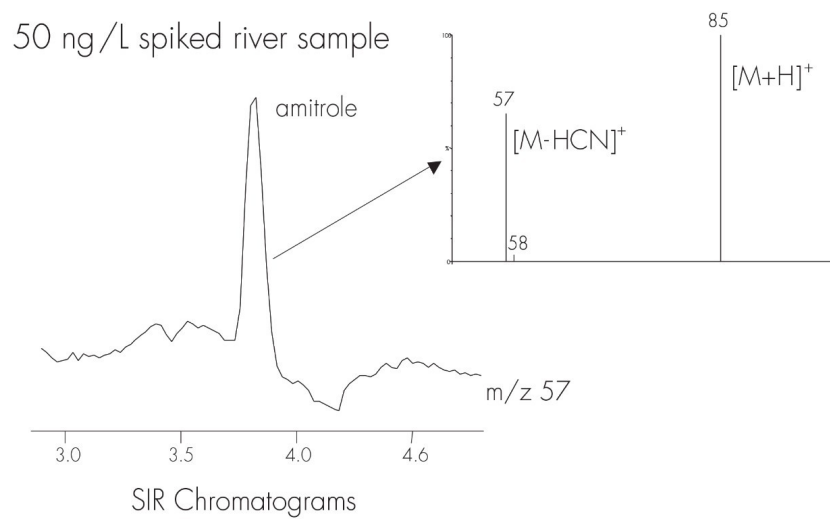
2.5 mL MeOH/NH<sub>4</sub>OH(95:5)

### EVAPORATE AND RECONSTITUTE:

250 mL methanol

---

## Results and Discussion



1 Calculated against standard prepared in matrix. Matrix suppression was approximately 10%

---

## Featured Products

WA31764.41, June 2003

© 2022 Waters Corporation. All Rights Reserved.

---