

## Acephate in River Water

---

Waters Corporation



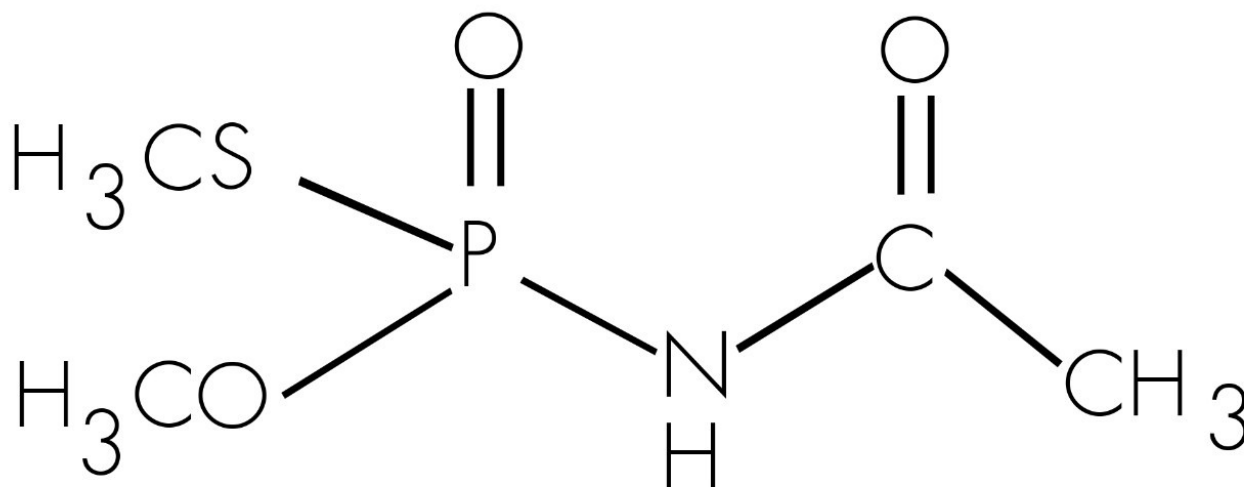
This is an Application Brief and does not contain a detailed Experimental section.

### Abstract

This application brief demonstrates analysis of acephate in river water.

## Introduction

The compound analyzed in this study is acephate.



# ACEPHATE

## Experimental

### LC Conditions

Column: Atlantis dC<sub>18</sub>, 2.1 x 100 mm, 3 μm

Part number: 186000295

Mobile phase : 15% Methanol in water

Flow rate: 0.2 mL/min

Injection volume: 20 μL

---

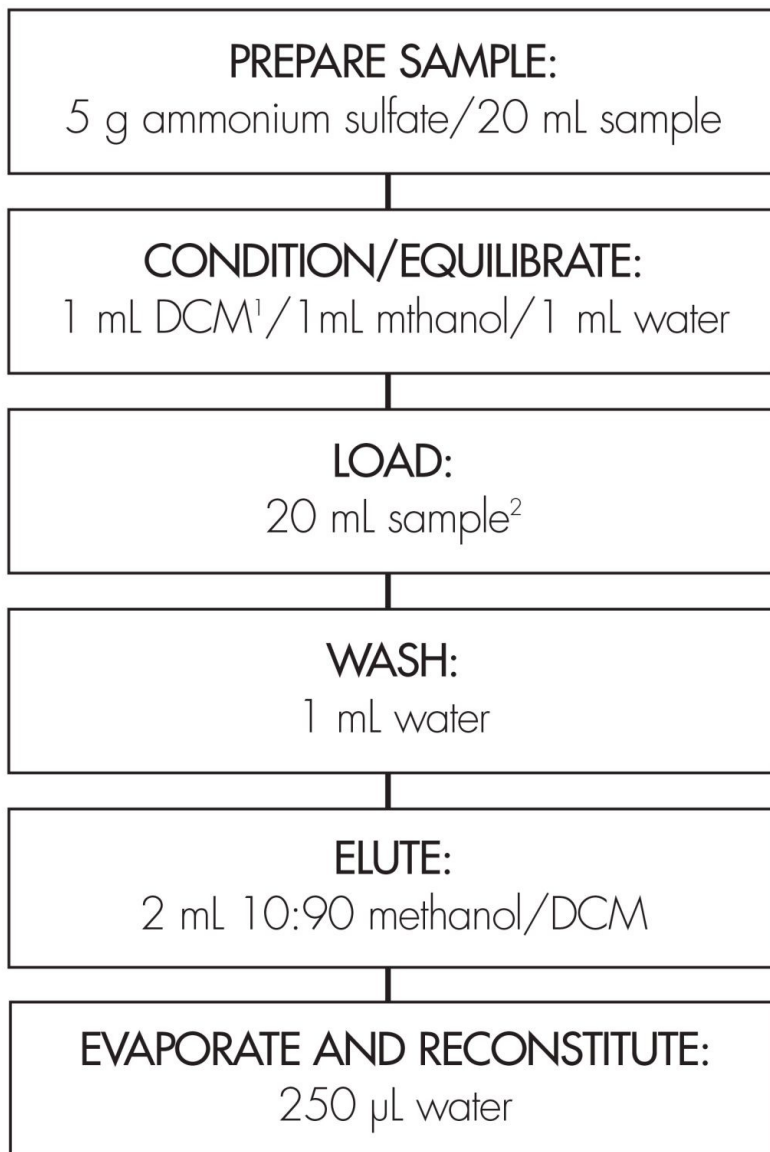
Temperature:	25 °C
Instrument:	Alliance 2795

## MS Conditions

Instrument:	Quattro
Ion source:	ESI+
Source temp.:	150 °C
Desolvation temp.:	450 °C
Cone gas:	50 L/hr
Desolvation gas:	500 L/hr
Collision gas:	Argon

# OASIS® HLB EXTRACTION METHOD

## Oasis® HLB Extraction Cartridge, 6 cc/200 mg

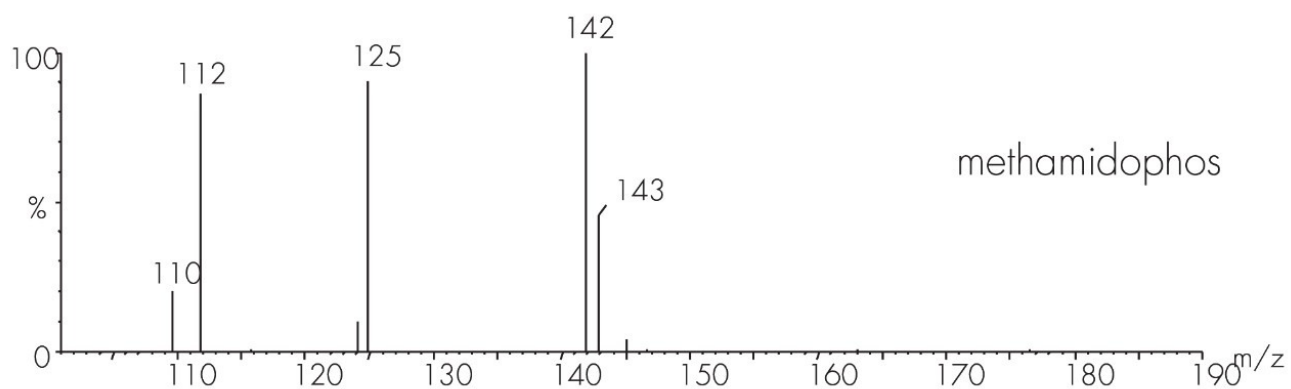
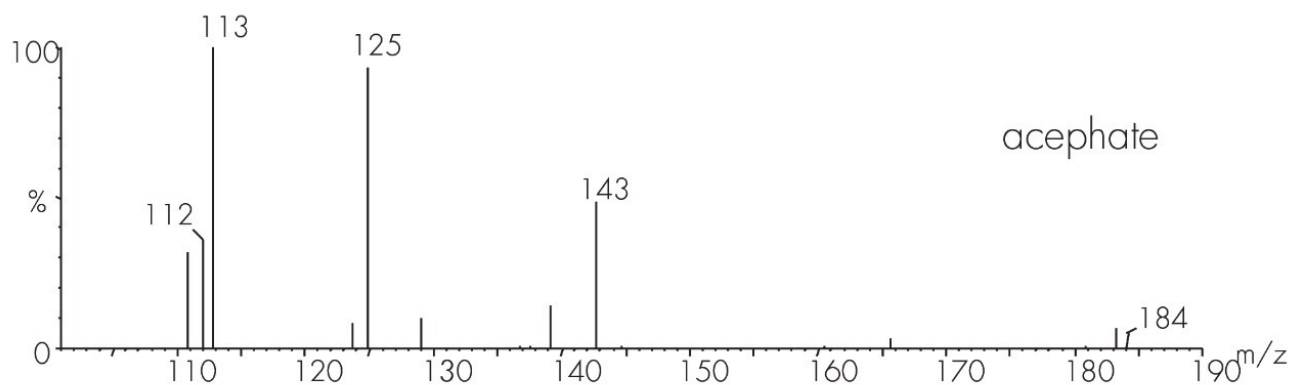


<sup>1</sup> methylene chloride

<sup>2</sup> 25 mL maximum sample size

## Results and Discussion

---



## Featured Products

WA31764.23, June 2003



© 2021 Waters Corporation. All Rights Reserved.