

Acephate in River Water

Waters Corporation



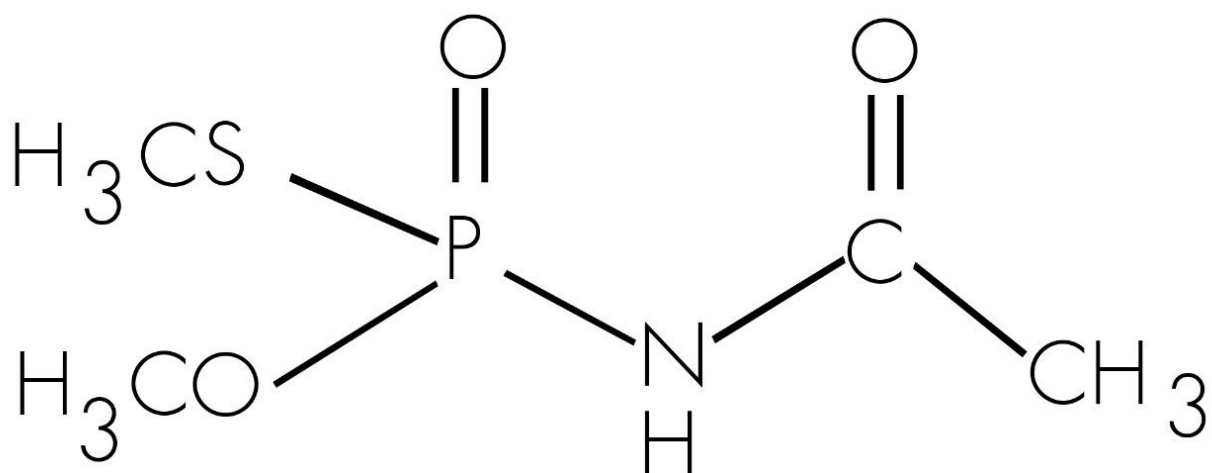
This is an Application Brief and does not contain a detailed Experimental section.

Abstract

This application brief demonstrates analysis of acephate in river water.

Introduction

The compound analyzed in this study is acephate.



ACEPHATE

Experimental

LC Conditions

Column:	Atlantis dC ₁₈ , 2.1 x 100 mm, 3 µm
Part number:	186000295
Mobile phase :	15% Methanol in water
Flow rate:	0.2 mL/min

Injection volume: 20 µL

Temperature: 25 °C

Instrument: Alliance 2795

MS Conditions

Instrument: Quattro

Ion source: ESI+

Source temp.: 150 °C

Desolvation temp.: 450 °C

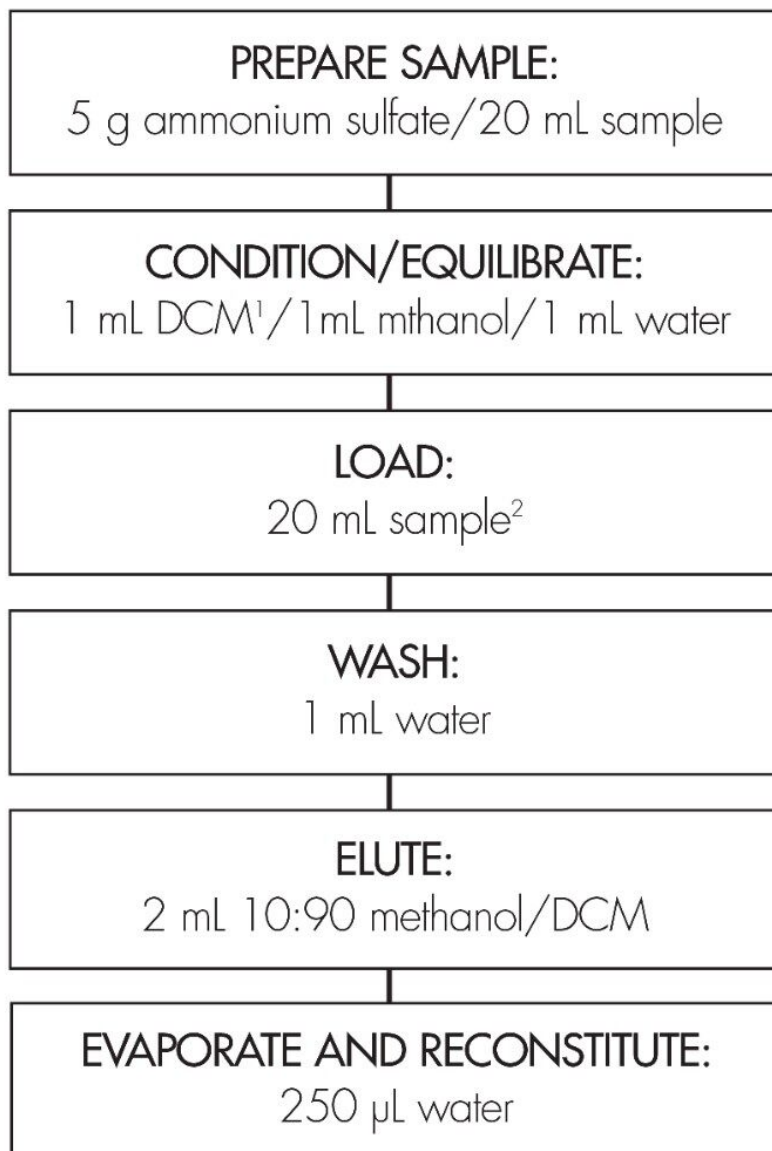
Cone gas: 50 L/hr

Desolvation gas: 500 L/hr

Collision gas: Argon

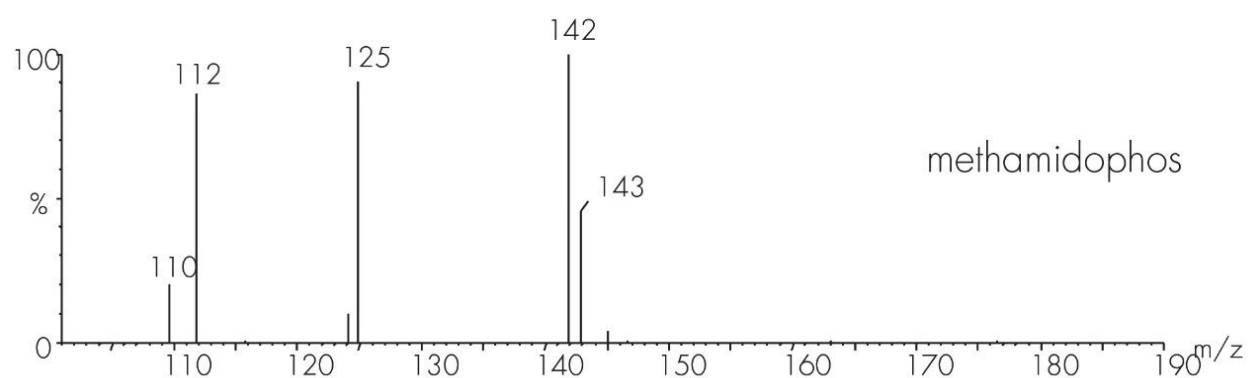
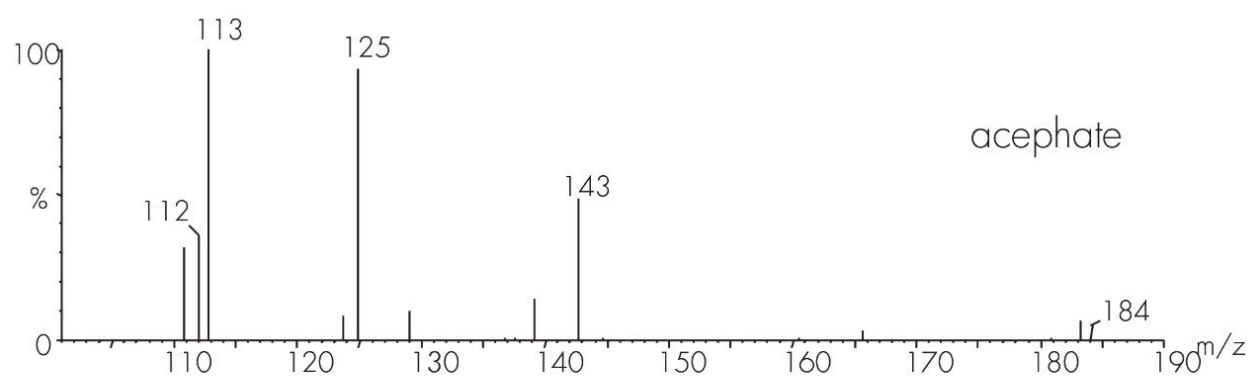
OASIS® HLB EXTRACTION METHOD

Oasis® HLB Extraction Cartridge, 6 cc/200 mg



¹ methylene chloride

² 25 mL maximum sample size



Featured Products

WA31764.23, June 2003