

Note d'application

## Atenolol in Urine by Mixed-Mode Weak Cation Exchange and LC-MS/MS

---

Waters Corporation

This is an Application Brief and does not contain a detailed Experimental section.

---

### Abstract

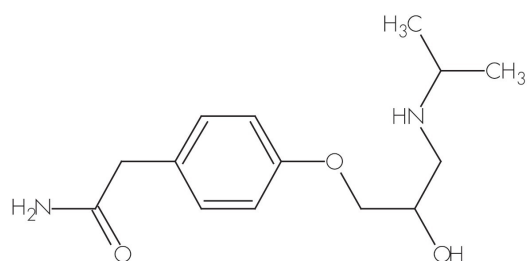
This application brief demonstrates analysis of atenolol in urine by mixed-mode weak cation exchange and LC-MS/MS.

---

### Introduction

The compound analyzed in this study is Atenolol.

---



**Atenolol**

---

## Experimental

### LC Conditions

Column:	XTerra MS C <sub>18</sub> 2.1 x 20 mm <i>IS</i> , 3.5 μm
Part number:	186001923
Mobile phase A:	10 mM NH <sub>4</sub> HCO <sub>3</sub> , pH 10
Mobile phase B:	MeOH with 10 mM NH <sub>4</sub> HCO <sub>3</sub> , pH 10
Flow rate:	0.4 mL/min
Injection volume:	10 μL
Column temperature:	Ambient
Instrument:	Waters 2777 Sample Manager and Waters 1525μ Binary HPLC Pump

---

## Gradient

Time (min)	%A	%B
0.0	95	5
3.0	5	95
4.0	5	95
4.1	95	5
5.0	95	5

## MS Conditions

Waters Micromass Quattro Ultima

ESI+

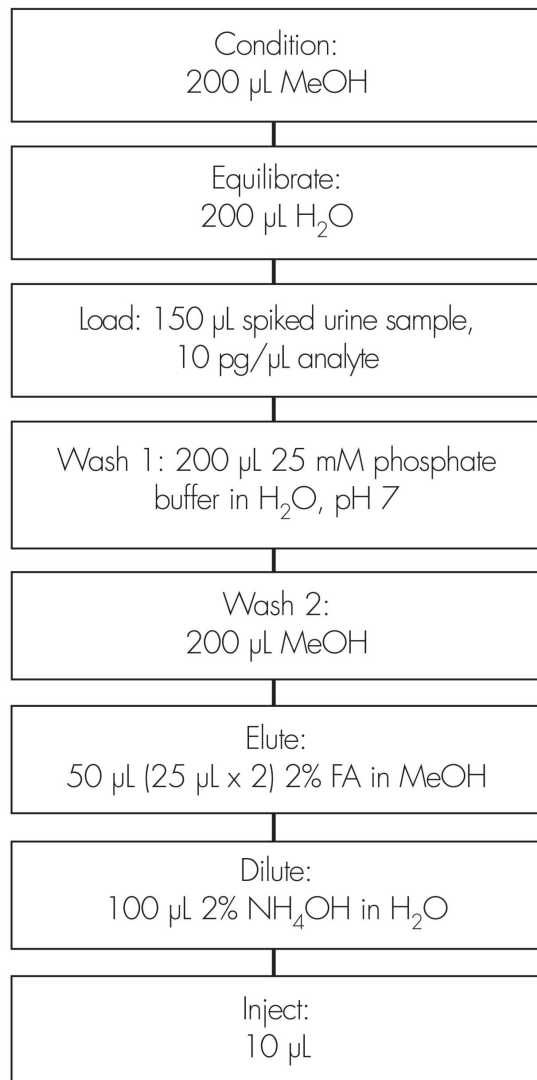
Source temp.: 150 °C

Desolvation temp.: 350 °C

Cone gas flow:	50 L/Hr
Desolvation gas flow:	550 L/Hr
Collision cell:	$2.2\text{e}^{-3}$ bar (Argon gas)
Cone voltage:	45 volts
CID:	25eV
MRM transition:	$m/z$ 266.9 $\rightarrow$ 144.9

## Oasis® WCX $\mu$ Elution Plate

Part Number: 186002499

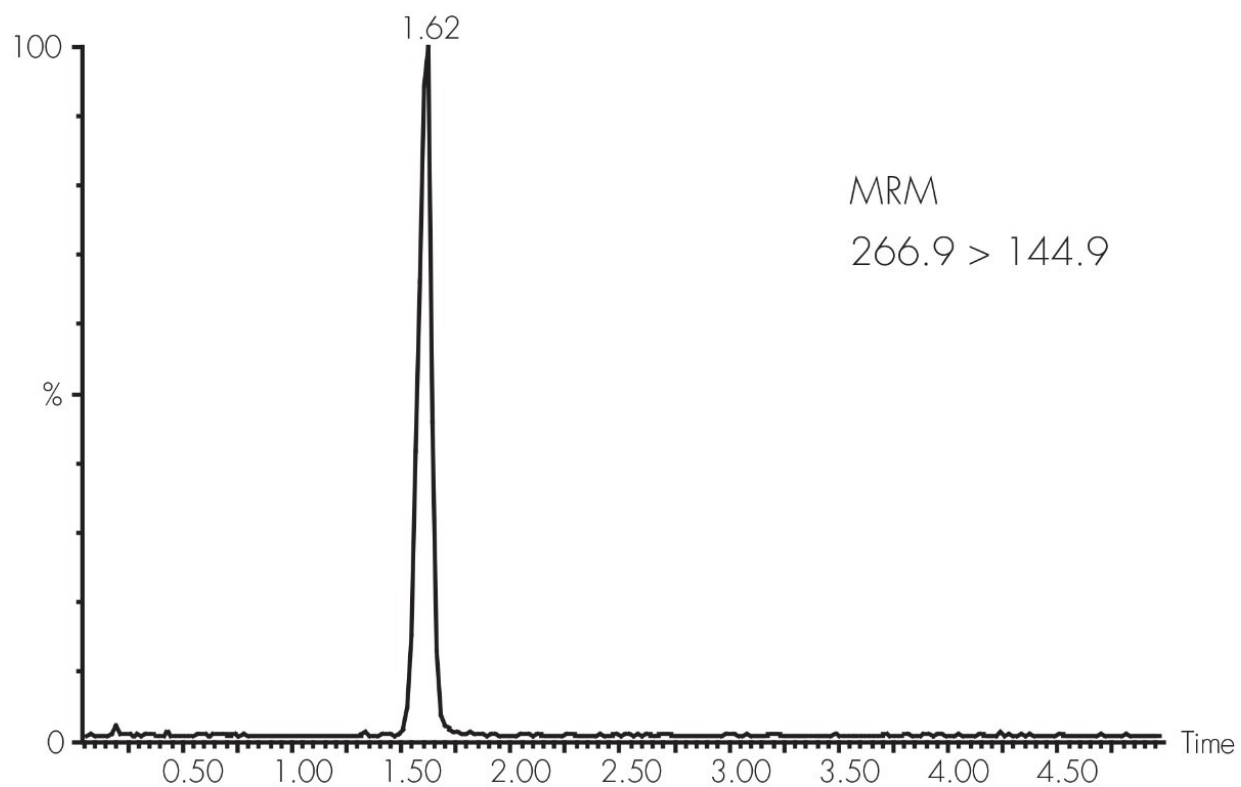


---

## Results and Discussion

---

## 106% Recovery



---

## Featured Products

WA31764.200, June 2003

© 2022 Waters Corporation. All Rights Reserved.